

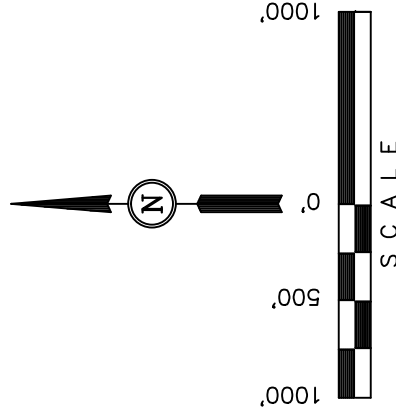
WHITING OIL & GAS CORP.

BASIS OF ELEVATION

SPOT ELEVATION LOCATED AT THE NORTHEAST CORNER OF SECTION 15, T9N, R58W, 6th P.M. TAKEN FROM THE GATEHOOK SPRING, QUADRANGLE, COLORADO, WELD COUNTY, 7.5 MINUTE QUAD (TOPOGRAPHIC MAP) PUBLISHED BY THE UNITED STATES DEPARTMENT OF THE INTERIOR, GEOLOGICAL SURVEY. SAID ELEVATION IS MARKED AS BEING 4679 FEET.

BASIS OF BEARINGS

BASIS OF BEARINGS IS A G.P.S. OBSERVATION.



CERTIFICATE OF STANDARD REGISTRATION

THIS IS TO CERTIFY THAT THE ABOVE CLAIM WAS PREPARED FROM FIELD NOTES OF ACTUAL SURVEYING MADE BY ME OR UNDER MY SUPERVISION AND THAT THE SAME ARE TRUE AND CORRECT TO THE BEST OF MY KNOWLEDGE AND BELIEF.

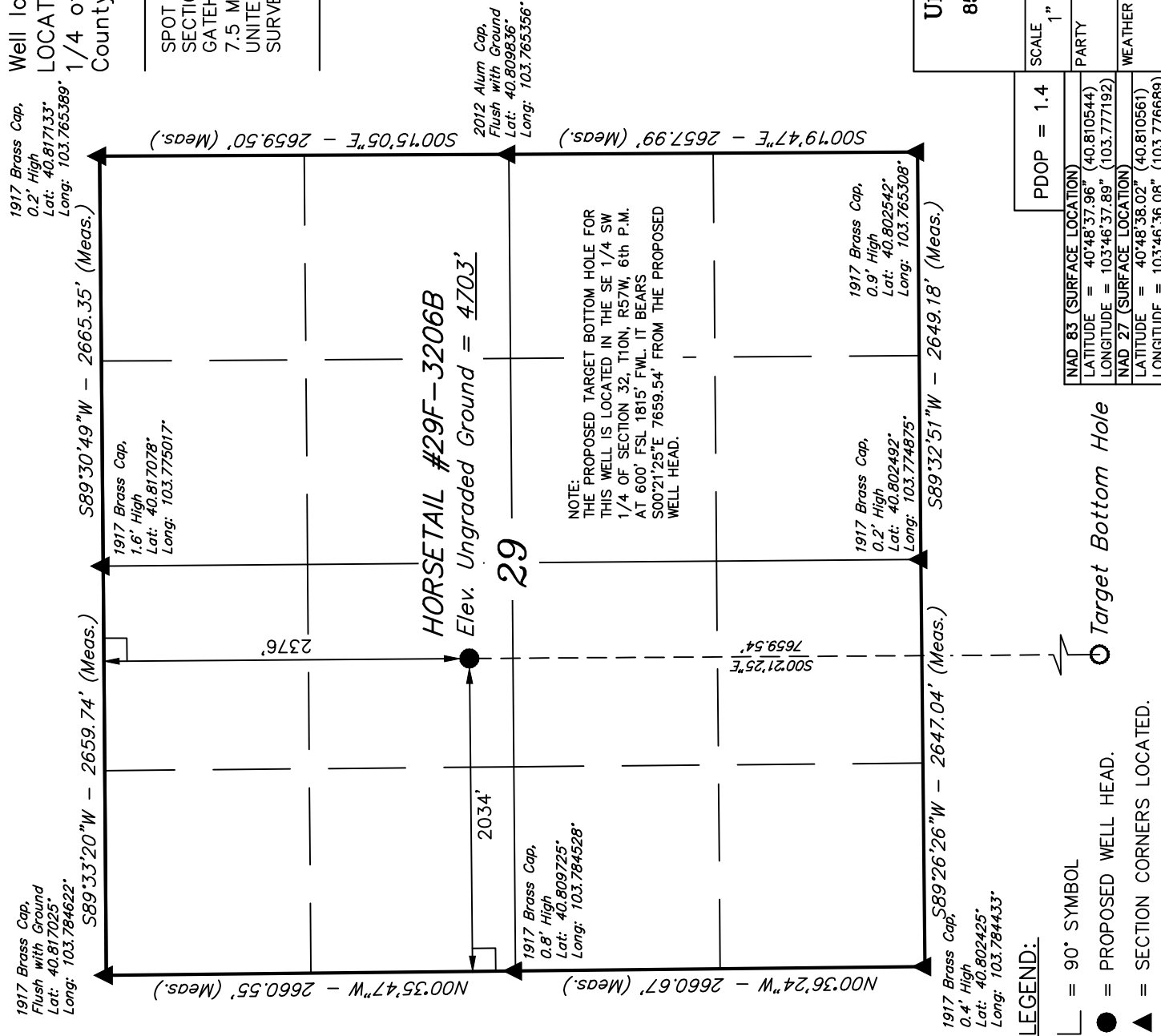
[Signature]

REGISTERED

REGISTERED LAND SURVEYOR
REGISTRATION NO. 28285
STATE OF COLORADO

UTAH ENGINEERING & LAND SURVEYING
85 SOUTH 200 EAST - VERNAL, UTAH 84078
(435) 789-1017

SCALE	1" = 1000'	DATE SURVEYED:	DATE DRAWN:
PARTY	J.H. C.M. B.D.H.	08-01-13	08-06-13
WEATHER	HOT	REFERENCES	
		G.L.O. PLAT	
		FILE	
		WHITING OIL & GAS CORP.	



WHITING OIL & GAS CORP.

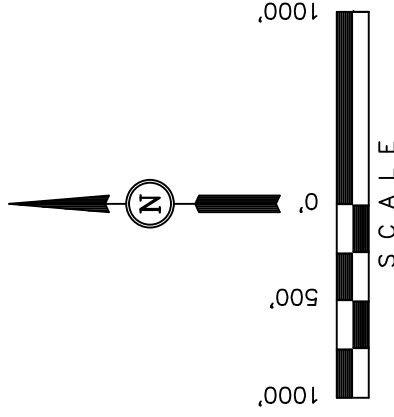
Well location, HORSETAIL #29F-3206B (TARGET BOTTOM HOLE), located as shown in the SE 1/4 SW 1/4 of Section 32, T10N, R57W, 6th. P.M., Weld County, Colorado.

BASIS OF ELEVATION

SPOT ELEVATION LOCATED AT THE NORTHEAST CORNER OF SECTION 15, T9N, R58W, 6th P.M. TAKEN FROM THE GATEHOOK SPRING, QUADRANGLE, COLORADO, WELD COUNTY, 7.5 MINUTE QUAD (TOPOGRAPHIC MAP) PUBLISHED BY THE UNITED STATES DEPARTMENT OF THE INTERIOR, GEOLOGICAL SURVEY. SAID ELEVATION IS MARKED AS BEING 4679 FEET.

BASIS OF BEARINGS

BASIS OF BEARINGS IS A G.P.S. OBSERVATION.



CERTIFICATE _____

THIS IS TO CERTIFY THAT THE ABOVE CLAIM WAS PREPARED FROM FIELD NOTES OF ACTUAL SURVEYS MADE BY ME OR UNDER MY SUPERVISION AND THAT THE SAME ARE TRUE AND CORRECT TO THE BEST OF MY KNOWLEDGE AND BELIEF.

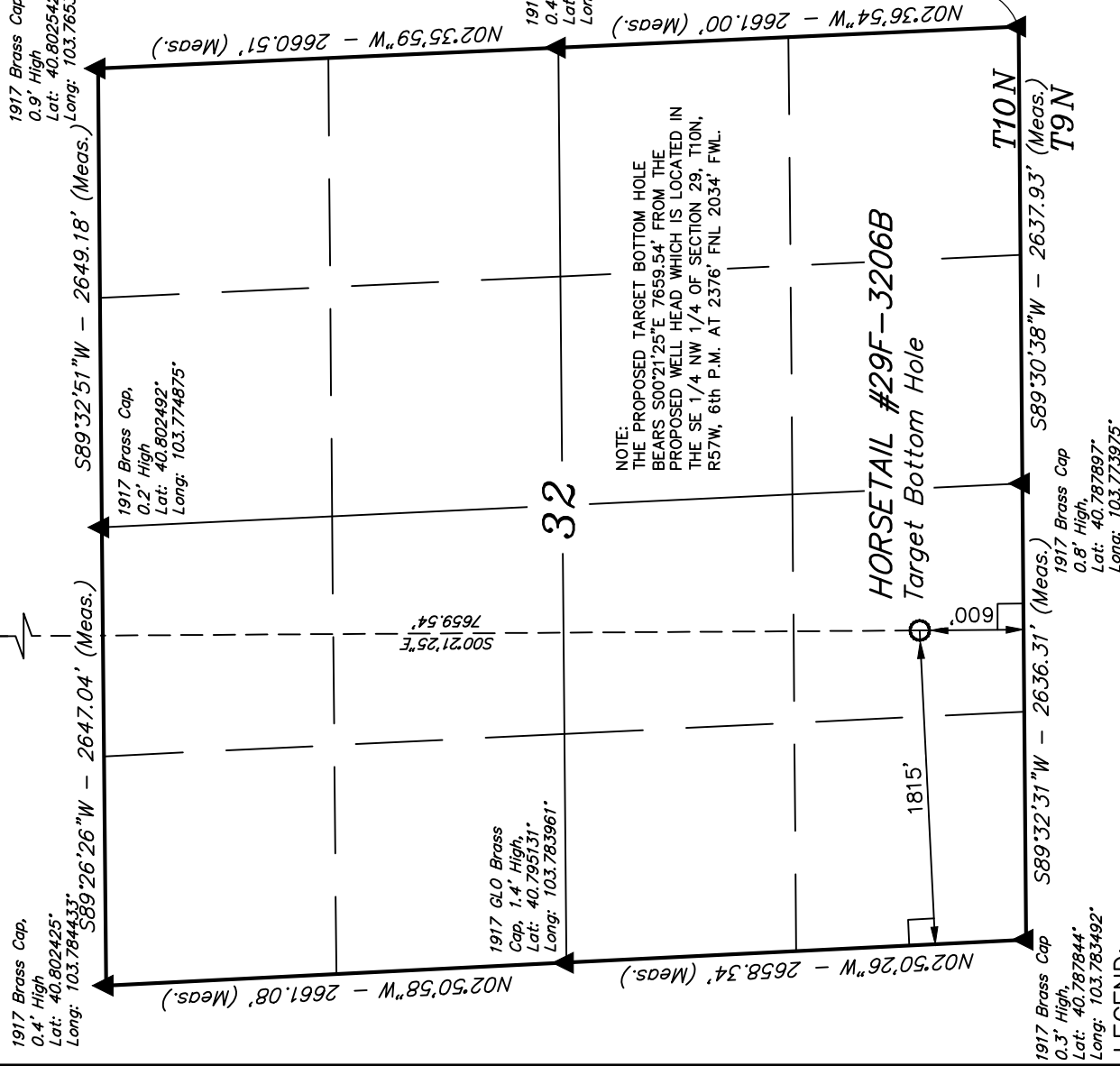
[Signature]

LAND REGISTRY

1917 Brass Cap
1.0' High,
Lat: 40.787953°
Long: 103.764450°

UTAH ENGINEERING & LAND SURVEYING
 85 SOUTH 200 EAST - VERNAL, UTAH 84078
 (435) 789-1017

SCALE	1" = 1000'	DATE SURVEYED:	DATE DRAWN:
PARTY	J.H. C.M. B.D.H.	REFERENCES	
WEATHER	HOT	FILE	
		G.L.O. PLAT	08-06-13
		WHITING OIL & GAS CORP.	



LEGEND:

$\mid = 90^\circ$ SYMBOL

● = PROPOSED WELL HEAD.

▲ = SECTION CORNERS LOCATED.

NAD 83 (TARGET BOTTOM HOLE)
LATITUDE = 40°47'22.30" (40.789528)
LONGITUDE = 103°46'37.34" (103.777039)
NAD 27 (TARGET BOTTOM HOLE)
LATITUDE = 40°47'22.35" (40.789542)
LONGITUDE = 103°46'35.54" (103.776539)