

T10N, R57W, 6th. P.M.

WHITING OIL & GAS CORP.

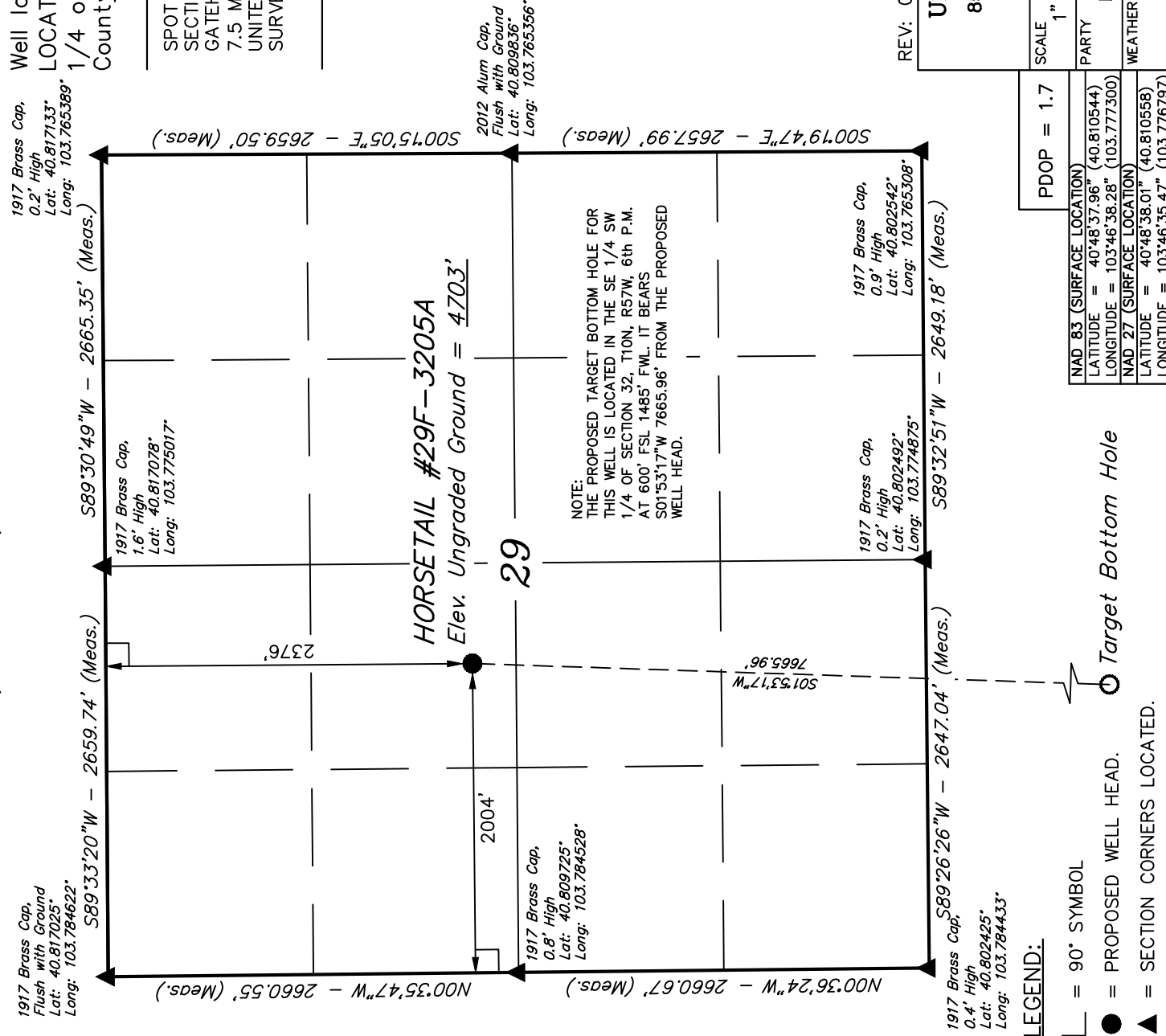
Well location, HORSETAIL #29F-3205A (SURFACE LOCATION), located as shown in the SE 1/4 NW 1/4 of Section 29, T10N, R57W, 6th. P.M., Weld County, Colorado.

BASIS OF ELEVATION

SPOT ELEVATION LOCATED AT THE NORTHEAST CORNER OF SECTION 15, T9N, R58W, 6th P.M. TAKEN FROM THE GATEHOOK SPRING, QUADRANGLE, COLORADO, WELD COUNTY, 7.5 MINUTE QUAD (TOPOGRAPHIC MAP) PUBLISHED BY THE UNITED STATES DEPARTMENT OF THE INTERIOR, GEOLOGICAL SURVEY. SAID ELEVATION IS MARKED AS BEING 4679 FEET.

BASIS OF BEARINGS

BASIS OF BEARINGS IS A G.P.S. OBSERVATION.



NOTE:
THE PROPOSED TARGET BOTTOM HOLE FOR THIS WELL IS LOCATED IN THE SE 1/4 SW 1/4 OF SECTION 32, T10N, R57W, 6th P.M. AT 600' FSL 1485' FWL. IT BEARS S01°53'17\"W 7665.96' FROM THE PROPOSED WELL HEAD.

CERTIFICATION

THIS IS TO CERTIFY THAT THE ABOVE PLAT WAS PREPARED FROM FIELD NOTES OF ACTUAL SURVEY MADE BY ME OR UNDER MY SUPERVISION AND THAT THE SAME IS TRUE AND CORRECT TO THE BEST OF MY KNOWLEDGE AND BELIEF.

REGISTERED LAND SURVEYOR
REGISTRATION NO. 28285
STATE OF COLORADO
EXPIRATION DATE 03-14-13

REV: 08-06-13 B.D.H.

UNTAH ENGINEERING & LAND SURVEYING	
85 SOUTH 200 EAST - VERNAL, UTAH 84078	
(435) 789-1017	
SCALE 1" = 1000'	DATE SURVEYED: 11-19-12
PARTY D.N. G.W. H.K.W.	DATE DRAWN: 11-21-12
WEATHER COOL	REFERENCES G.L.O. PLAT
FILE WHITING OIL & GAS CORP.	

PDOP = 1.7	
NAD 83 (SURFACE LOCATION)	
LATITUDE = 40°48'37.96" (40.810544)	
LONGITUDE = 103°46'38.28" (103.777300)	
NAD 27 (SURFACE LOCATION)	
LATITUDE = 40°48'38.01" (40.810558)	
LONGITUDE = 103°46'35.47" (103.776797)	

- LEGEND:
- 90° SYMBOL
 - PROPOSED WELL HEAD. Target Bottom Hole
 - SECTION CORNERS LOCATED.

WHITING OIL & GAS CORP.

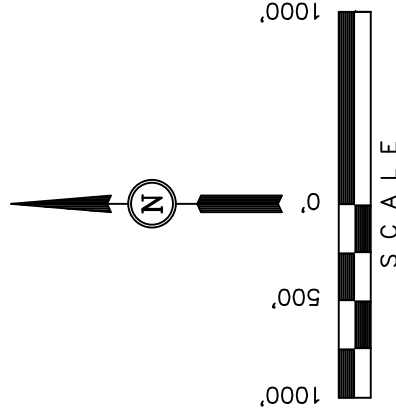
Well location, HORSETAIL #29F-3205A (TARGET BOTTOM HOLE), located as shown in the SE 1/4 SW 1/4 of Section 32, T10N, R57W, 6th. P.M., Weld County, Colorado.

BASIS OF ELEVATION

SPOT ELEVATION LOCATED AT THE NORTHEAST CORNER OF SECTION 15, T9N, R58W, 6th P.M. TAKEN FROM THE GATEHOOK SPRING, QUADRANGLE, COLORADO, WELD COUNTY, 7.5 MINUTE QUAD (TOPOGRAPHIC MAP) PUBLISHED BY THE UNITED STATES DEPARTMENT OF THE INTERIOR, GEOLOGICAL SURVEY. SAID ELEVATION IS MARKED AS BEING 4679 FEET.

BASIS OF BEARINGS

BASIS OF BEARINGS IS A G.P.S. OBSERVATION:



CERTIFICATE

THIS IS TO CERTIFY THAT THE ABOVE CLAIM WAS PREPARED FROM FIELD NOTES OF ACTUAL SURVEYING MADE BY ME OR UNDER MY SUPERVISION AND THAT THE SAME ARE TRUE AND CORRECT TO THE BEST OF MY KNOWLEDGE AND BELIEF.

1917 Brass Cap
1.0' High,
Lat: 40.787953°
Long: 103.764450°

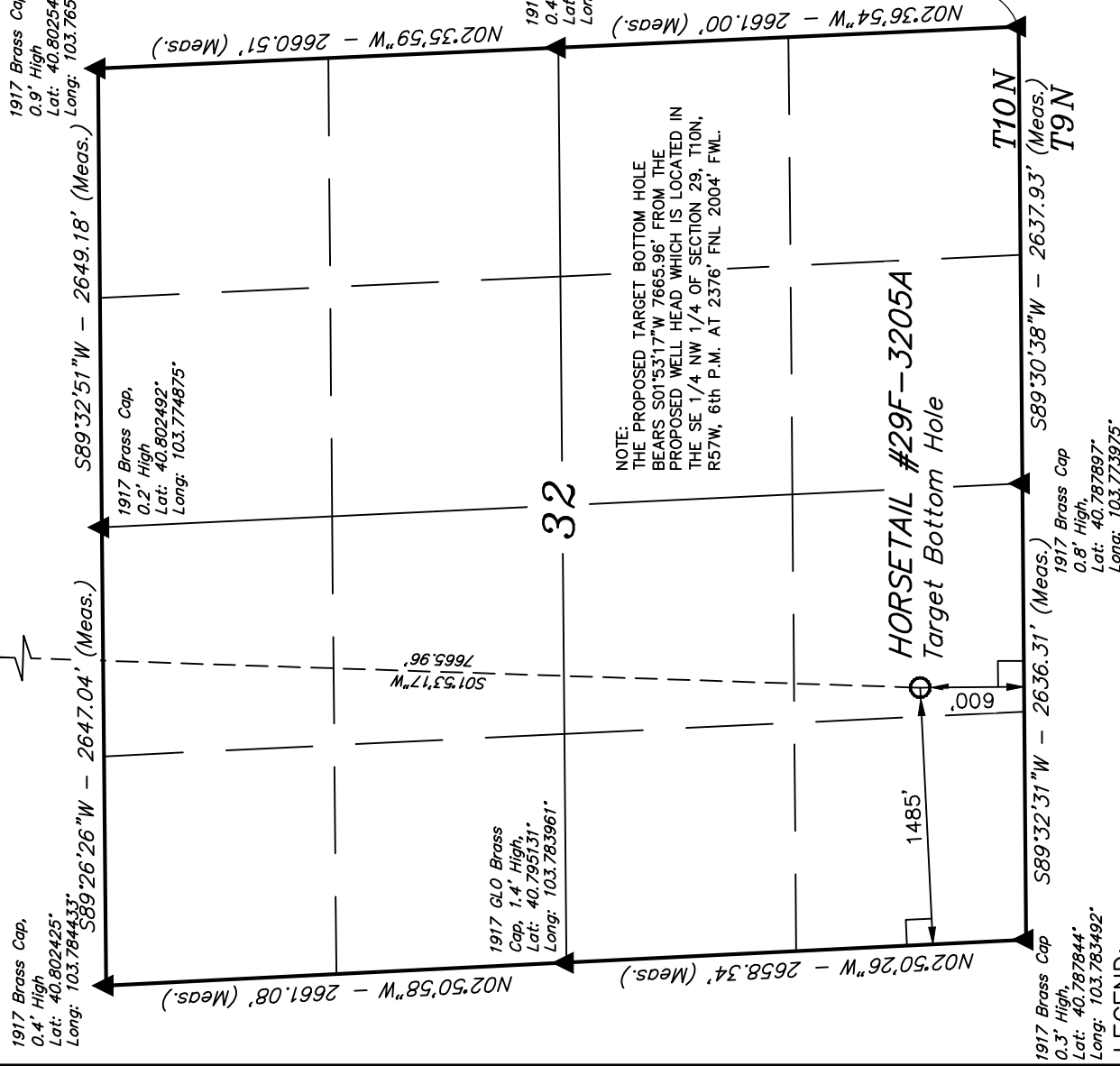
REV: 08-06-13 B.D.H.

UNTAH ENGINEERING & LAND SURVEYING
85 SOUTH 200 EAST - VERNAL, UTAH 84078
(435) 789-1017

SCALE	DATE SURVEYED:	DATE DRAWN:
1" = 1000'	11-19-12	11-21-12

PARTY	REFERENCES
D.N. G.W. H.K.W.	G O. PLAT

WEATHER	FILE
COOL	WHITING OIL & GAS CORP.



LEGEND:

 $\mid = 90^\circ$ SYMBOL

● = PROPOSED WELL HEAD.

▲ = SECTION CORNERS LOCATED.

NAD 83 (TARGET BOTTOM HOLE)
LATITUDE = 40°47'22.28" (40.78952222222222)
LONGITUDE = 103°46'51.64" (103.78222222222222)
NAD 27 (TARGET BOTTOM HOLE)
LATITUDE = 40°47'22.33" (40.78952777777778)
LONGITUDE = 103°46'39.83" (103.77772222222222)