

T6N, R90W, 6th. P.M.

R  
90  
W

R  
89  
W

PetroShare Corp.

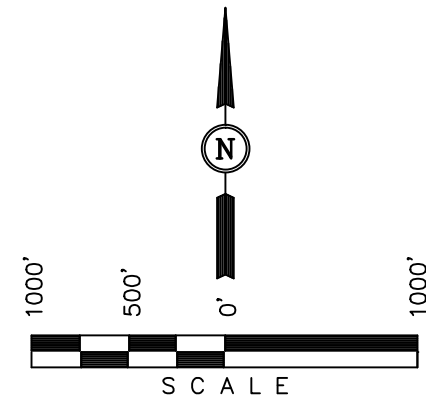
Well location, VOLOSHIN #3-25, located as shown in Lot 11 of Section 25, T6N, R90W, 6th. P.M., Moffat County, Colorado.

### BASIS OF ELEVATION

SPOT ELEVATION AT A ROAD INTERSECTION LOCATED IN THE SOUTHWEST 1/4 OF SECTION 20, T6N, R88W, 6th P.M. TAKEN FROM THE HAYDEN, QUADRANGLE, COLORADO, 7.5 MINUTE SERIES (TOPOGRAPHIC MAP) PUBLISHED BY THE UNITED STATES DEPARTMENT OF THE INTERIOR, GEOLOGICAL SURVEY. SAID ELEVATION IS MARKED AS BEING 6445 FEET.

### BASIS OF BEARINGS

BASIS OF BEARINGS IS A G.P.S. OBSERVATION.



### CERTIFICATE

THIS IS TO CERTIFY THAT THE ABOVE PLAT WAS PREPARED FROM FIELD NOTES OF ACTUAL SURVEYS MADE BY ME OR UNDER MY SUPERVISION AND THAT THE SAME ARE TRUE AND CORRECT TO THE BEST OF MY KNOWLEDGE AND BELIEF.

REVISED: 12-10-13 T.B.  
REVISED: 02-26-13 T.B.  
REVISED: 02-19-13 H.K.W.  
REVISED: 02-15-13 A.D.

REGISTERED LAND SURVEYOR  
REGISTRATION NO. 17492  
STATE OF COLORADO  
02-11-13

UINTAH ENGINEERING & LAND SURVEYING

85 SOUTH 200 EAST - VERNAL, UTAH 84078

(435) 789-1017

PDOP = 1.7

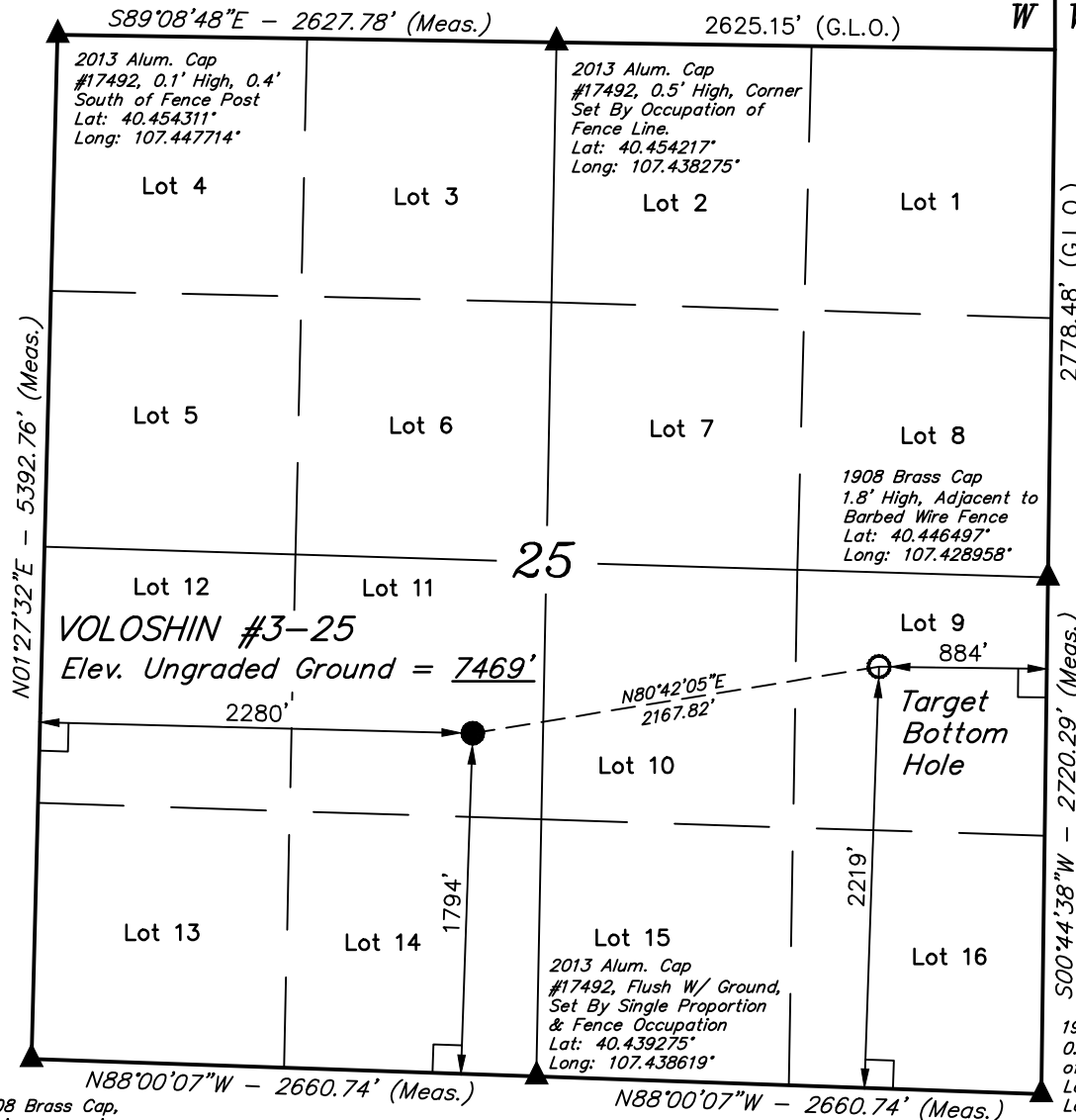
NAD 83 (TARGET BOTTOM HOLE)	NAD 83 (SURFACE LOCATION)
LATITUDE = 40°26'42.73" (40.445203)	LATITUDE = 40°26'39.24" (40.444233)
LONGITUDE = 107°25'55.75" (107.432153)	LONGITUDE = 107°26'23.41" (107.439836)
NAD 27 (TARGET BOTTOM HOLE)	NAD 27 (SURFACE LOCATION)
LATITUDE = 40°26'42.83" (40.445231)	LATITUDE = 40°26'39.33" (40.444258)
LONGITUDE = 107°25'53.53" (107.431536)	LONGITUDE = 107°26'21.18" (107.439217)
STATE PLANE NAD 83	STATE PLANE NAD 83
N: 1410886.29 E: 2462276.62	N: 1410579.31 E: 2460131.39
STATE PLANE NAD 27	STATE PLANE NAD 27
N: 410885.19 E: 1462434.30	N: 410578.22 E: 1460289.07

### LEGEND:

└─┘ = 90° SYMBOL

● = PROPOSED WELL HEAD.

▲ = SECTION CORNERS LOCATED.



1908 Brass Cap,  
0.5' High, 0.6' South  
of East-West-North  
Fence Line  
Lat: 40.439517°  
Long: 107.448172°

1908 Brass Cap  
0.9' High, 0.4' East  
of Fence Post  
Lat: 40.439033°  
Long: 107.429069°