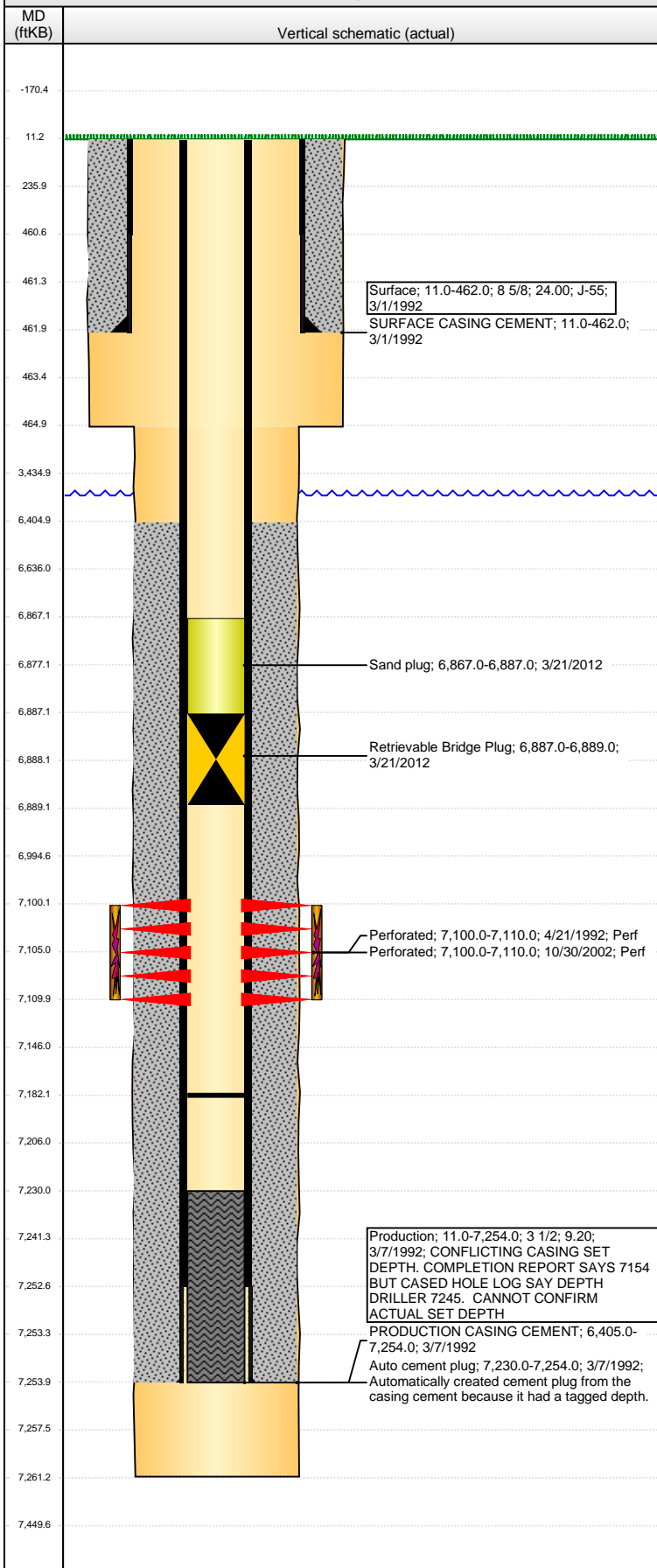


Well Name: GOZA FEDERAL 18-01

VERTICAL - ORIGINAL HOLE, 12/12/2013 7:30:10 AM



Well Header

API 05-123-15612	Business Unit WATTENBERG	District 15	Well Config VERTICAL
Original KB Elevation (ft) 4,760.00	KB - GL / MSL (ftKB) 11.00	Spud Date 2/28/1992	P & A Date

Comment

ORIGINAL DRILLING REPORTS MISSING FROM PLATTEVILLE WELL FILE. CONFLICTING PRODUCTION CASING SET DEPTH. COMPLETION REPORT SAYS 7154 BUT CASED HOLE LOG SAY DEPTH DRILLER 7245. CANNOT CONFIRM ACTUAL SET DEPTH

Directions To Well

HWY 392 & WCR 39, NORTH 0.2 TO OLIVE ST, WEST 0.1 TO TKB, NORTH 0.1 INTO.

Congressional Location

Quarter 1	Quarter 2	Quarter 3	Quarter 4	Section	Township	Twship N...	Range	Rng E/W Dir
	SW	NE	SE	18	6	N	65	W

Bottom Hole Location

North-South Distance (ft)	From N or S Line	East-West Distance (ft)	From E or W Line

Plug Back Total Depths

Date	Depth (ftKB)	Method	Com
3/7/1992	7,230.0	CASING TALLY	GUIDE SHOE
4/21/1992	7,275.0	CASED HOLE LOG	DEPTH LOGGER
11/7/2002	7,150.0	TAG	
3/20/2012	7,103.8	TAG	TBG TALLY MEASUREMENT.
3/20/2012	7,182.2	TAG	C/O, TBG TALLY MEASUREMENT.

Wellbore Sections

Section Des	Size (in)	Act Top, MD (ftKB)	Act Btm, MD (ftKB)
SURFACE	12 1/4	11.0	465.0
PRODUCTION	7 7/8	465.0	7,261.0

Zone Statuses

Zone Name	Status Date	Status	Job
CODELL	5/22/1992	PR	DRILLING/COMPLETION - ORIGINAL, 2/28/1992 00:00

Casing Strings

Surface, 462.0ftKB

Casing Description	Run Date	OD (in)	Wt/Len (l...)	Grade	Top, MD (ft...)	MD (ftKB)
Surface	3/1/1992	8 5/8	24.00	J-55	11.0	462.0

Production, 7,254.0ftKB

Casing Description	Run Date	OD (in)	Wt/Len (l...)	Grade	Top, MD (ft...)	MD (ftKB)
Production	3/7/1992	3 1/2	9.20		11.0	7,254.0

Cement

Description	Top Depth (ftKB)	Bottom Depth (ftKB)
SURFACE CASING CEMENT	11.0	462.0
Description	Top Depth (ftKB)	Bottom Depth (ftKB)
PRODUCTION CASING CEMENT	6,405.0	7,254.0

Tubing Components

Item Des	OD (in)	Wt (lb/ft)	Grade	Jts	Len (ft)	Btm (ftKB)	Btm (TVD) (ftKB)

Perforation Data

Zone	Brnch/St g	Entered Shot Total	Top (ftKB)	Btm (ftKB)	Date
CODELL, ORIGINAL HOLE		20	7,100.00	7,110.00	4/21/1992
CODELL, ORIGINAL HOLE		40	7,100.00	7,110.00	10/30/2002

Stimulations & Treatments

Date	Zone	Primary Job Type
4/22/1992	CODELL, ORIGINAL HOLE	DRILLING/COMPLETION - ORIGINAL
Technical Result		Tech Result Details
Comment		Tech Result Note
Date	Zone	Primary Job Type
11/5/2002	CODELL, ORIGINAL HOLE	RE-FRAC
Technical Result		Tech Result Details
Comment		Tech Result Note

Other In Hole

Run Date	Des	OD (in)	Top (ftKB)	Btm (ftKB)
3/21/2012	Retrievable Bridge Plug	2 3/4	6,887.0	6,889.0

Well Name: GOZA FEDERAL 18-01

VERTICAL - ORIGINAL HOLE, 12/12/2013 7:30:12 AM

Other In Hole

Run Date	Des	OD (in)	Top (ftKB)	Btm (ftKB)
3/21/2012	Sand plug	2 3/4	6,867.0	6,887.0

Logs

Date	Type	Top, MD (ftKB)	Btm, MD (ftKB)
3/6/1992	COMPENSATED DENSITY	3,650.0	7,254.0
3/6/1992	INDUCTION	462.0	7,254.0
4/21/1992	CEMENT BOND	6,300.0	7,147.0

