

Existing

KB=10'

Proposed

HSR Teacher 10-14A
API: 0512315725

Surface casing 575

Fox Hills Base 1138

Sussex No perfs
Top 4353

Sussex No perfs
Base 4700

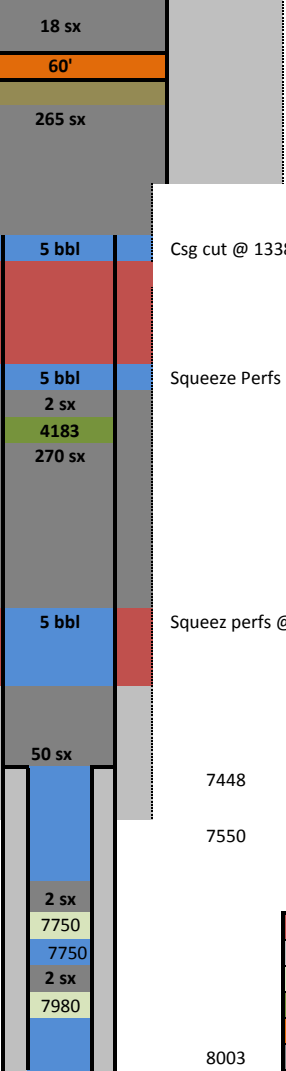
TOC	
Formation	Perfs
Niobrara	7090-7260
Top	7090
Codell	7380-7396
Top	7380

4.5" 11.6# 170

J-Sand	7836-7886
Top	7828
Dakota	8040-8084
Top	8031

2.875" 6.5# N80

6654



Csg cut @ 1338'

Squeeze Perfs @ 4153'

Squeez perfs @ 4750'

7448

7550

8003

Type III FH Plug

Hole Diameter	9
Hole Capacity (ft3/ft)	0.44
Surface csg Capacity (ft3/ft)	0.36
Fox Hill Hole Coverage (ft)	563
Fox Hill Hol Vol (ft3)	249
Csg Plug Vol (ft3)	17.45
Surface Csg Vol (ft3)	71.5
Total Vol (ft3)	338
20% Excess (bbl)	72
Sx	265

Spacer

Hole/Csg Capacity (ft3/ft)	0.33
10 bbl height (ft)	85

G

Location

SN/SX Plug

~Hole Diameter	9.5
Hole/csg Capacity (ft3/ft)	0.38
Csg capacity (ft3/ft)	0.09
Shannon/Sussex Coverage (ft)	597
Shannon/Sussex Volume (ft3)	280
Shannon/Sussex +20% (bbl)	60
Sx	268

G

Nio/CD Csg Plug

CSG Cement Top	6654
CGG Cement Btm	7448
Cement Plug Height	794
Cement Volume (ft3)	69
Cement Required (bbl)	12
Sx	50