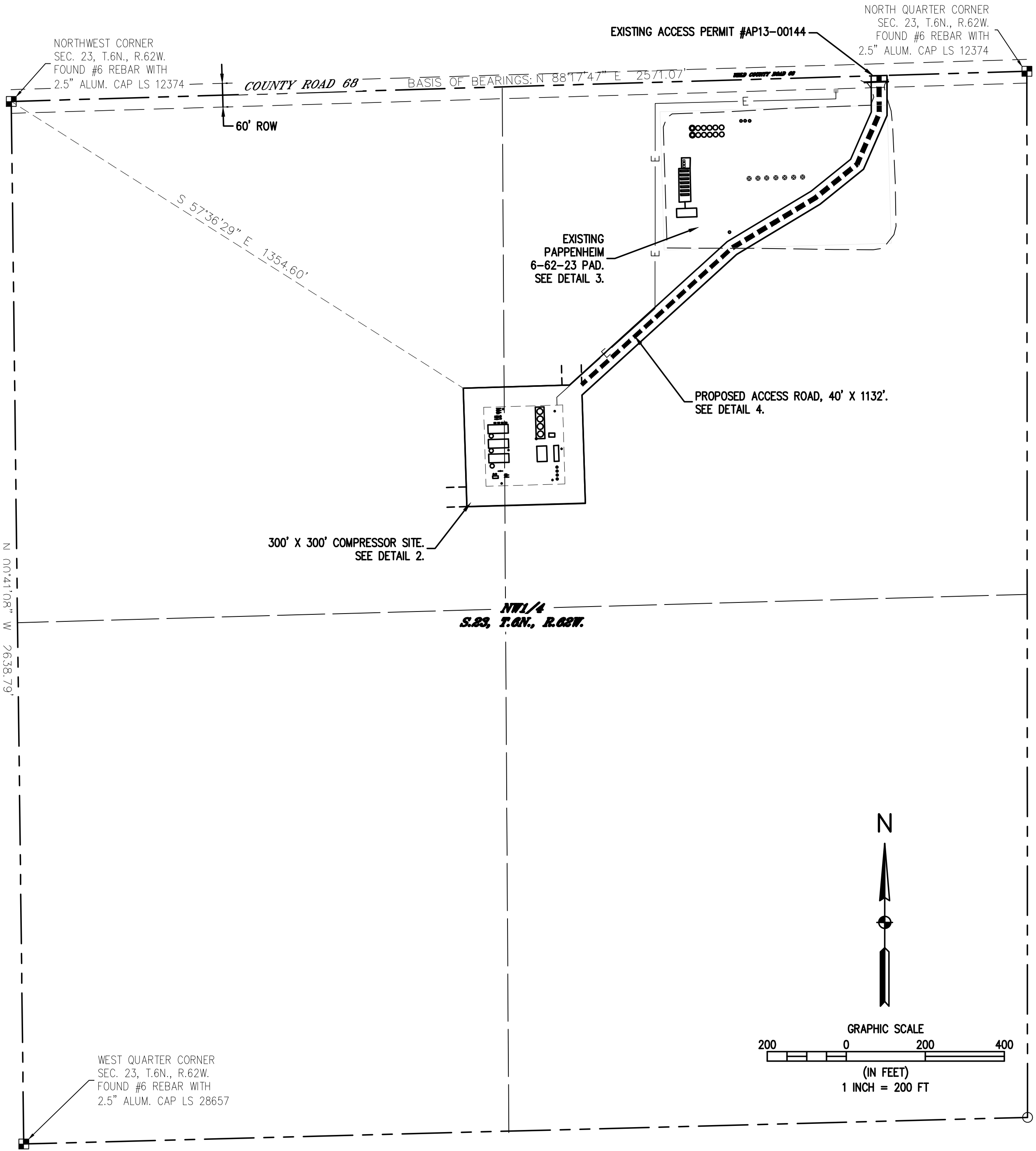


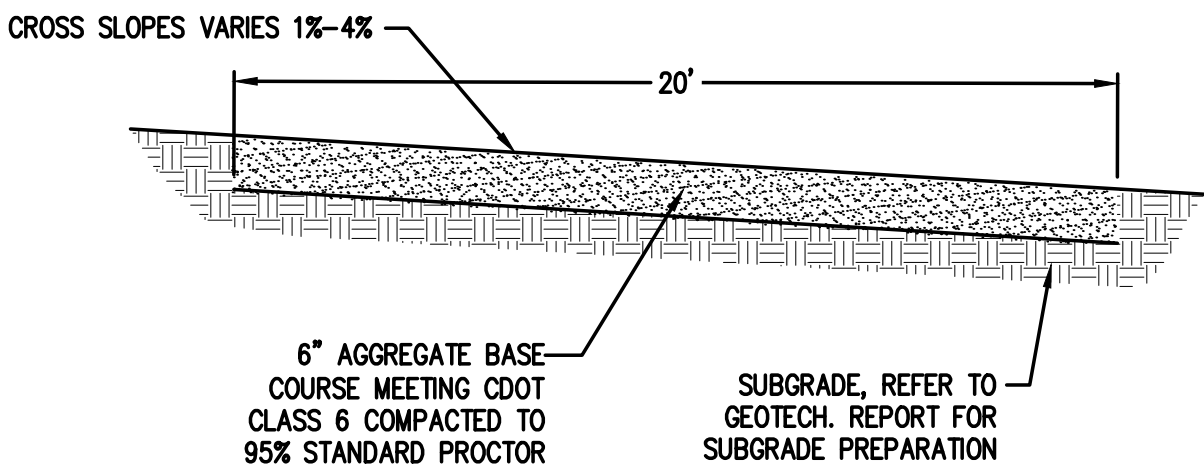
BRONCO COMPRESSOR STATION

USE BY SPECIAL REVIEW USR13-XXXX

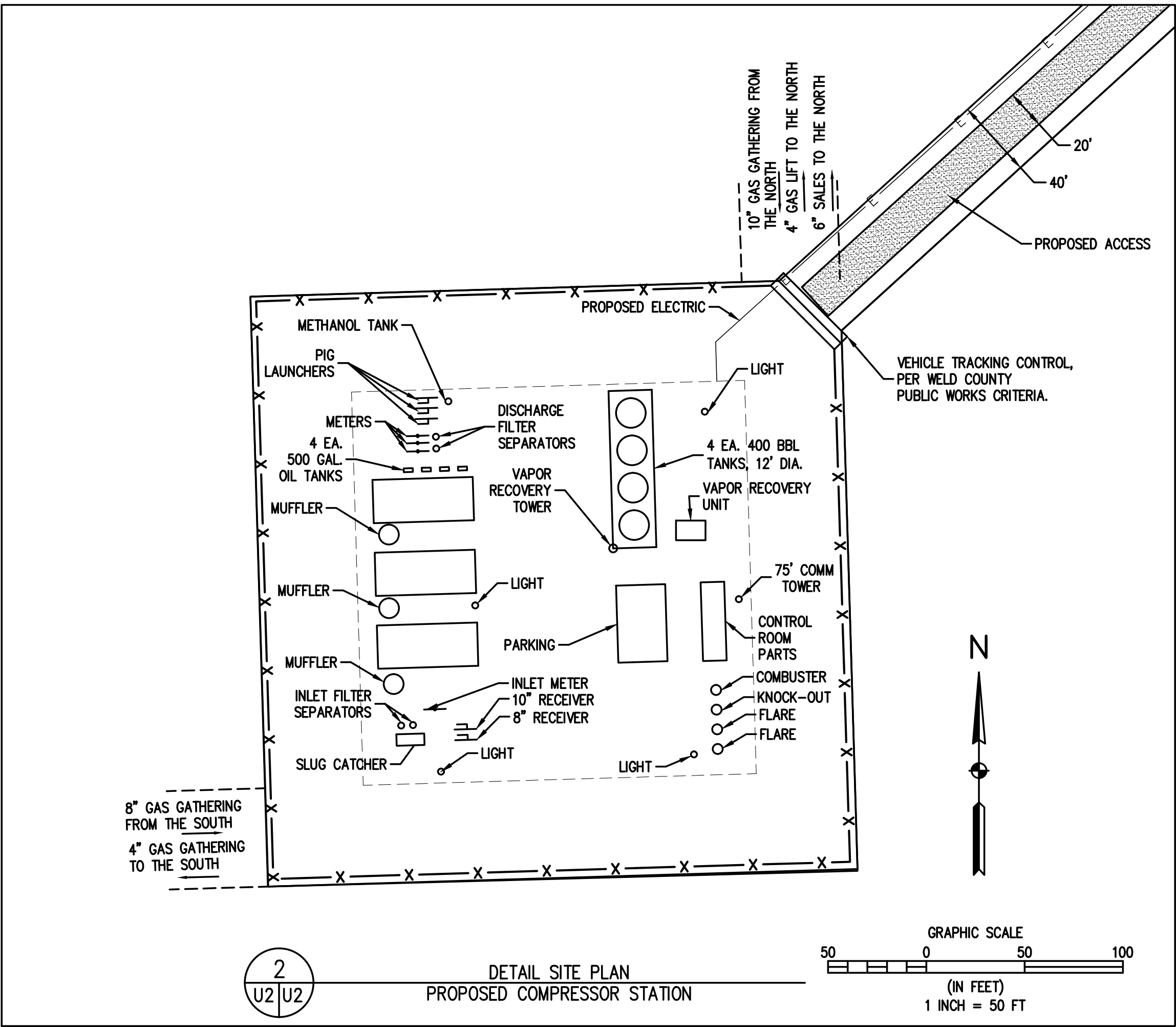
2 OF 2



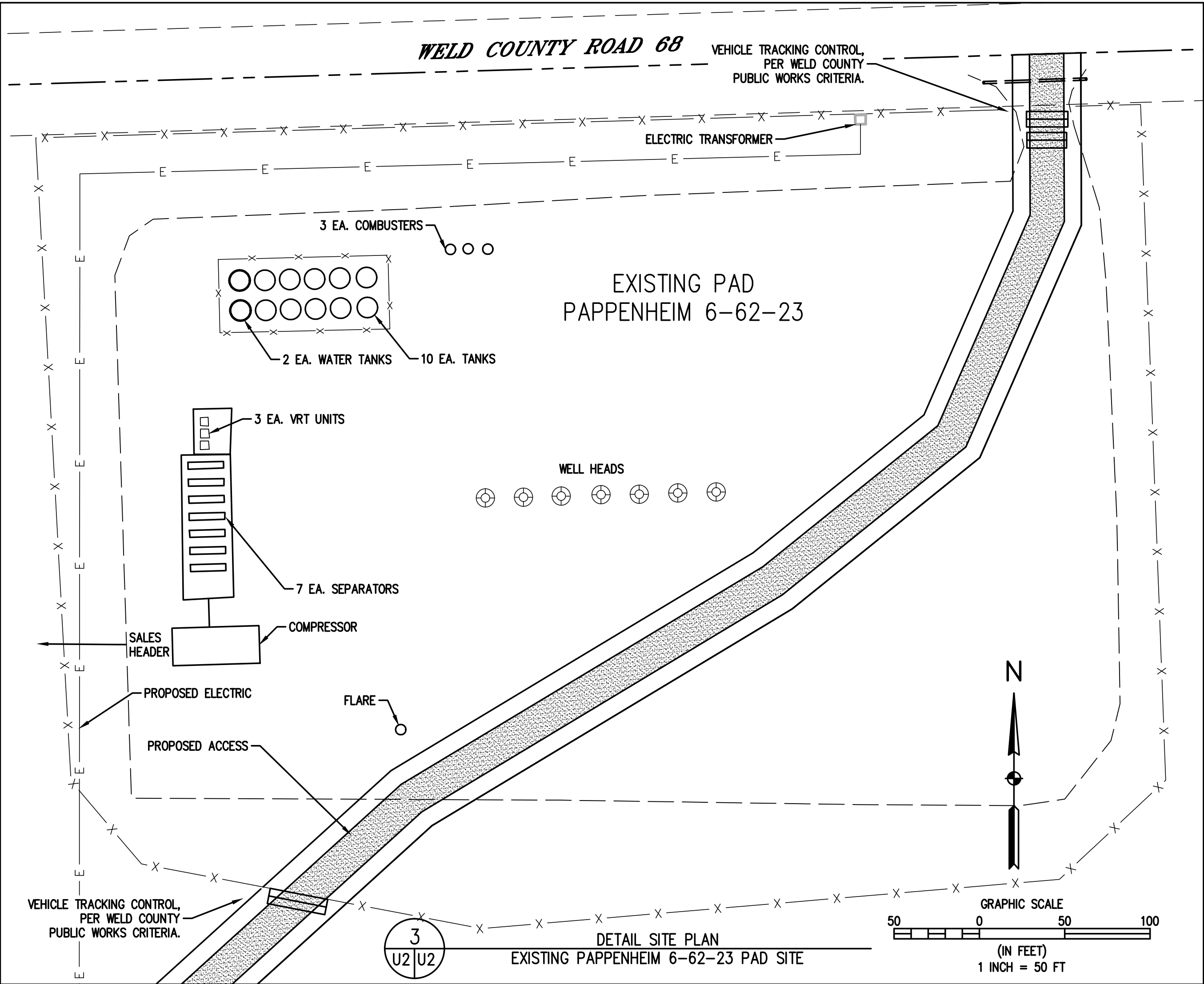
- LEGEND
- SECTION LINE
 - EDGE OF GRAVEL
 - SUBJECT PROPERTY LINE
 - FENCE
 - UNDERGROUND ELECTRIC
 - ROAD RIGHT-OF-WAY
 - ACCESS ROAD
 - CATTLE GUARD
 - ALIQUOT MONUMENT



ALL WEATHER ROAD TYPICAL SECTION
NOT TO SCALE



DETAIL SITE PLAN
PROPOSED COMPRESSOR STATION



DETAIL SITE PLAN
EXISTING PAPPENHEIM 6-62-23 PAD SITE

BASELINE

Engineering - Planning - Surveying
700 12TH STREET, SUITE 220 • GOLDEN, COLORADO 80401
P. 303.940.9966 • F. 303.940.9968 • www.baselinecorp.com

DESIGNED BY: M.J.W.
DRAWN BY: M.J.W.
CHECKED BY: N.J.N.

DATE: _____
PREPARED BY: _____

REVISION DESCRIPTION: _____

BILL BARRETT CORPORATION
WELD COUNTY
BRONCO COMPRESSOR STATION
SITE PLAN

PREPARED UNDER THE DIRECT SUPERVISION OF

FOR AND ON BEHALF OF
BASELINE CORPORATION
INITIAL SUBMITTAL: XX/XX/XX
DRAWING SIZE: 24" x 36"
SURVEY FIRM: SURVEY DATE:
LAT. 40
JOB NO.: PL232
DRAWING NAME:
PL232-USR.dwg
SHEET 2 OF 2

U2