

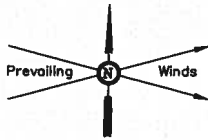
GREAT WESTERN OIL & GAS COMPANY

TARGET BOTTOM HOLE DRAWING FOR

SCHMUNK EF 31-361HN, 31-362HN, 31-363HC, 31-365HN,
31-367HN, 31-368HC, 31-369HN, 31-A, 31-B, 31-C,
31-D & 31-E ON EXISTING SCHMUNK 31-31 WELL PAD
SECTION 31, T7N, R65W, 6th. P.M.
NW 1/4 NE 1/4

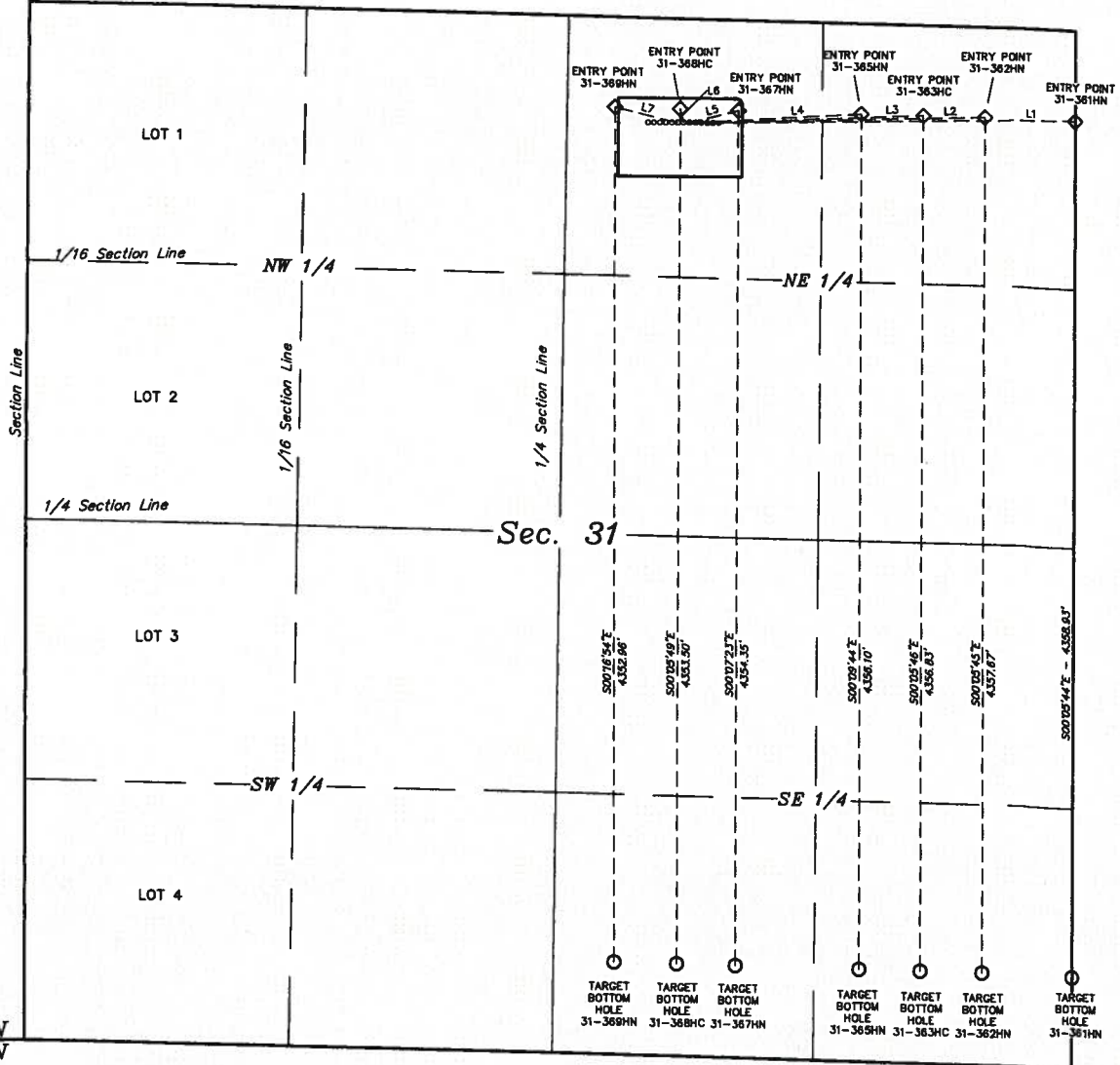
FIGURE #6

SCALE: 1" = 600'
DATE: 10-25-13
DRAWN BY: J.W.



R 66
W 65

Section Line



T7N
T6N

LINE TABLE		
LINE	DIRECTION	LENGTH
L1	N89°03'11"E	1853.16'
L2	N86°23'58"E	1414.44'
L3	N87°41'25"E	1130.96'
L4	N88°31'13"E	848.44'
L5	N75°45'59"E	258.88'
L6	N13°00'52"W	71.37'
L7	N78°30'07"W	325.11'