

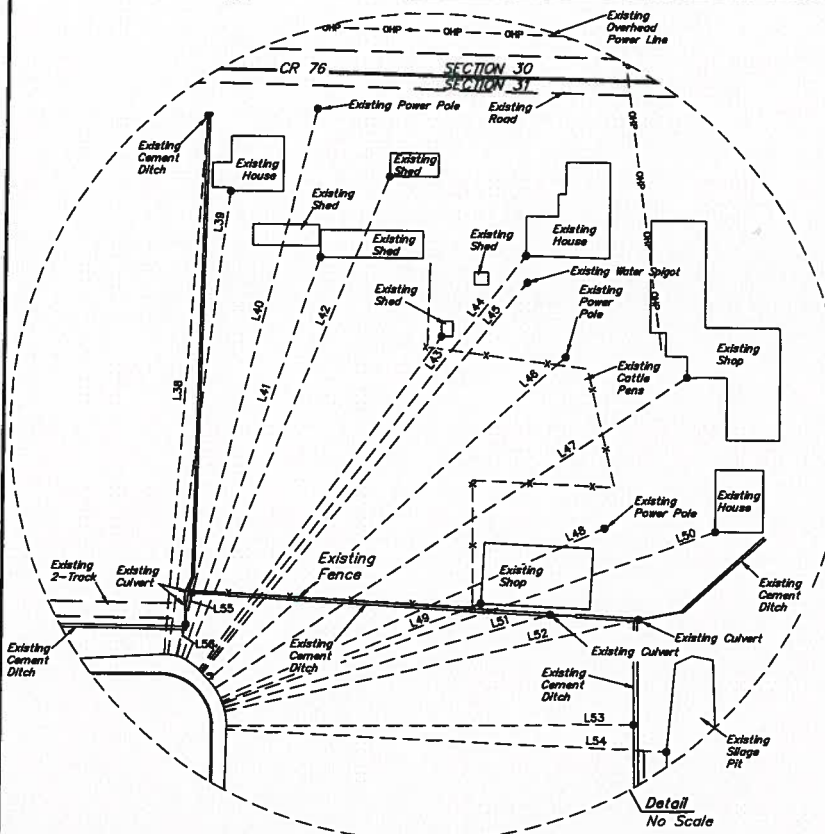
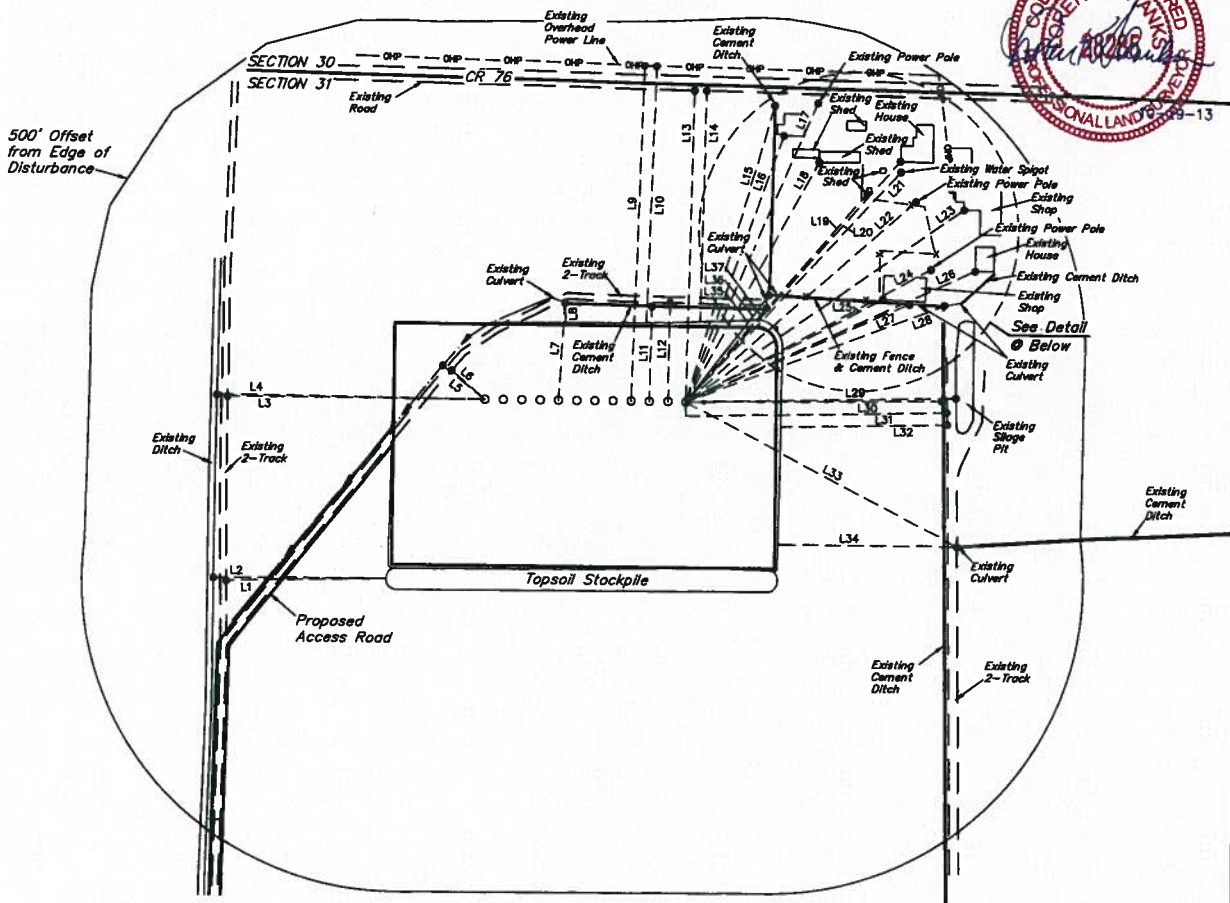
# GREAT WESTERN OIL & GAS COMPANY

## LOCATION DRAWING FOR

SCHMUNK EF 31-361HN, 31-362HN, 31-363HC, 31-365HN,  
31-367HN, 31-368HC, 31-369HN, 31-A, 31-B, 31-C,  
31-D & 31-E ON EXISTING SCHMUNK 31-31 WELL PAD  
SECTION 31, T7N, R65W, 6th. P.M.  
NW 1/4 NE 1/4

## FIGURE #5

SCALE: 1" = 300'  
DATE SURVEYED: 09-03-13  
SURVEYED BY: ZANE BULLARD  
DATE DRAWN: 09-10-13  
DRAWN BY: H.K.W.  
REV: 10-22-13 J.W.



LINE TABLE			LINE TABLE		
LINE	DIRECTION	LENGTH	LINE	DIRECTION	LENGTH
L1	S89°W	283'	L29	N89°E	447'
L2	WEST	283'	L30	N89°E	424'
L3	WEST	425'	L31	N89°E	432'
L4	WEST	442'	L32	N89°E	275'
L5	N51°W	89'	L33	S82°E	508'
L6	N49°W	73'	L34	EAST	298'
L7	N03°E	182'	L35	N37°E	225'
L8	N03°W	33'	L36	N37°E	228'
L9	N02°E	857'	L37	N40°E	306'
L10	N02°E	426'	L38	N04°E	356'
L11	N01°E	157'	L39	N07°E	308'
L12	N01°E	184'	L40	N14°E	371'
L13	N01°E	516'	L41	N18°E	278'
L14	N01°E	383'	L42	N22°E	344'
L15	N16°E	513'	L43	N35°E	270'
L16	N20°E	470'	L44	N37°E	346'
L17	N23°E	542'	L45	N39°E	333'
L18	N28°E	455'	L46	N47°E	315'
L19	N40°E	458'	L47	N56°E	368'
L20	N41°E	534'	L48	N65°E	273'
L21	N42°E	522'	L49	N68°E	180'
L22	N48°E	505'	L50	N70°E	338'
L23	N55°E	689'	L51	N73°E	220'
L24	N61°E	481'	L52	N77°E	275'
L25	N62°E	368'	L53	N89°E	284'
L26	N65°E	525'	L54	S88°E	288'
L27	N68°E	405'	L55	N13°E	43'
L28	N69°E	458'	L56	N14°E	21'