

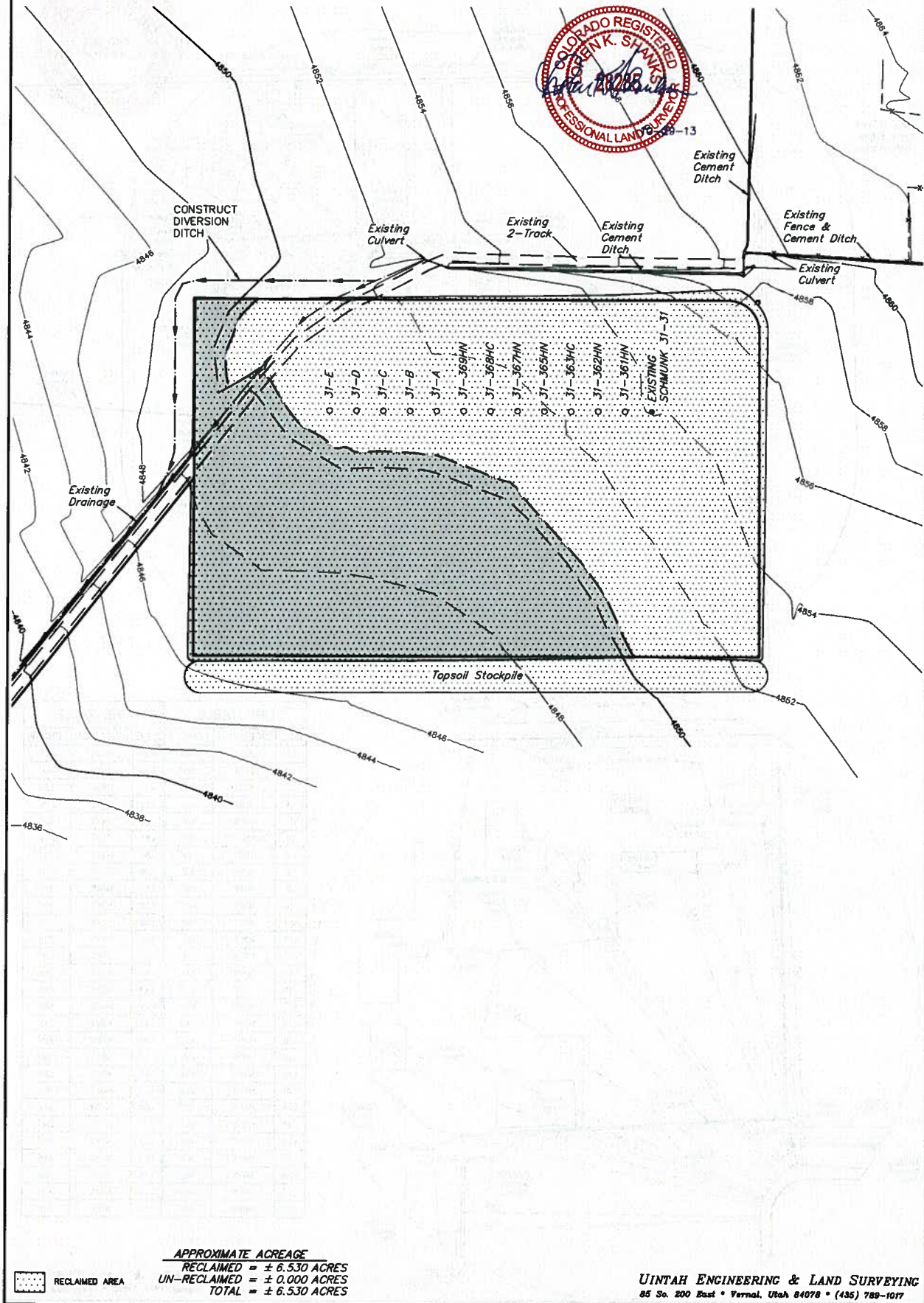
# GREAT WESTERN OIL & GAS COMPANY

## RECLAMATION DIAGRAM FOR

SCHMUNK EF 31-361HN, 31-362HN, 31-363HC, 31-365HN,  
31-367HN, 31-368HC, 31-369HN, 31-A, 31-B, 31-C,  
31-D & 31-E ON EXISTING SCHMUNK 31-31 WELL PAD  
SECTION 31, T7N, R65W, 6th. P.M.  
NW 1/4 NE 1/4

FIGURE #4

SCALE: 1" = 100'  
DATE: 09-12-13  
DRAWN BY: H.K.W.  
REV: 10-29-13 J.W.



APPROXIMATE ACREAGE  
RECLAIMED = ± 6.530 ACRES  
UN-RECLAIMED = ± 0.000 ACRES  
TOTAL = ± 6.530 ACRES

RECLAIMED AREA

UINTAH ENGINEERING & LAND SURVEYING  
85 So. 200 East • Vernal, Utah 84078 • (435) 789-1017