

**PROPOSED LOCATION:**  
 SCHMUNK EF 31-361HN, 31-362HN,  
 31-363HC, 31-365HN, 31-367HN, 31-368HC,  
 31-369HN, 31-A, 31-B, 31-C, 31-D & 31-E ON  
 EXISTING SCHMUNK 31-31 WELL PAD

# **LEGEND:**

**PROPOSED LOCATION**

## **GREAT WESTERN OIL & GAS COMPANY**

SCHMUNK EF 31-361HN, 31-362HN, 31-363HC, 31-365HN,  
 31-367HN, 31-368HC, 31-369HN, 31-A, 31-B, 31-C, 31-D  
 & 31-E ON EXISTING SCHMUNK 31-31 WELL PAD  
 SECTION 31 T7N, R65W, 6th P.M.  
 NW 1/4 NE 1/4



**Utah Engineering & Land Surveying**  
 85 South 200 East Vernal, Utah 84078  
 (435) 789-1017 \* FAX (435) 789-1813

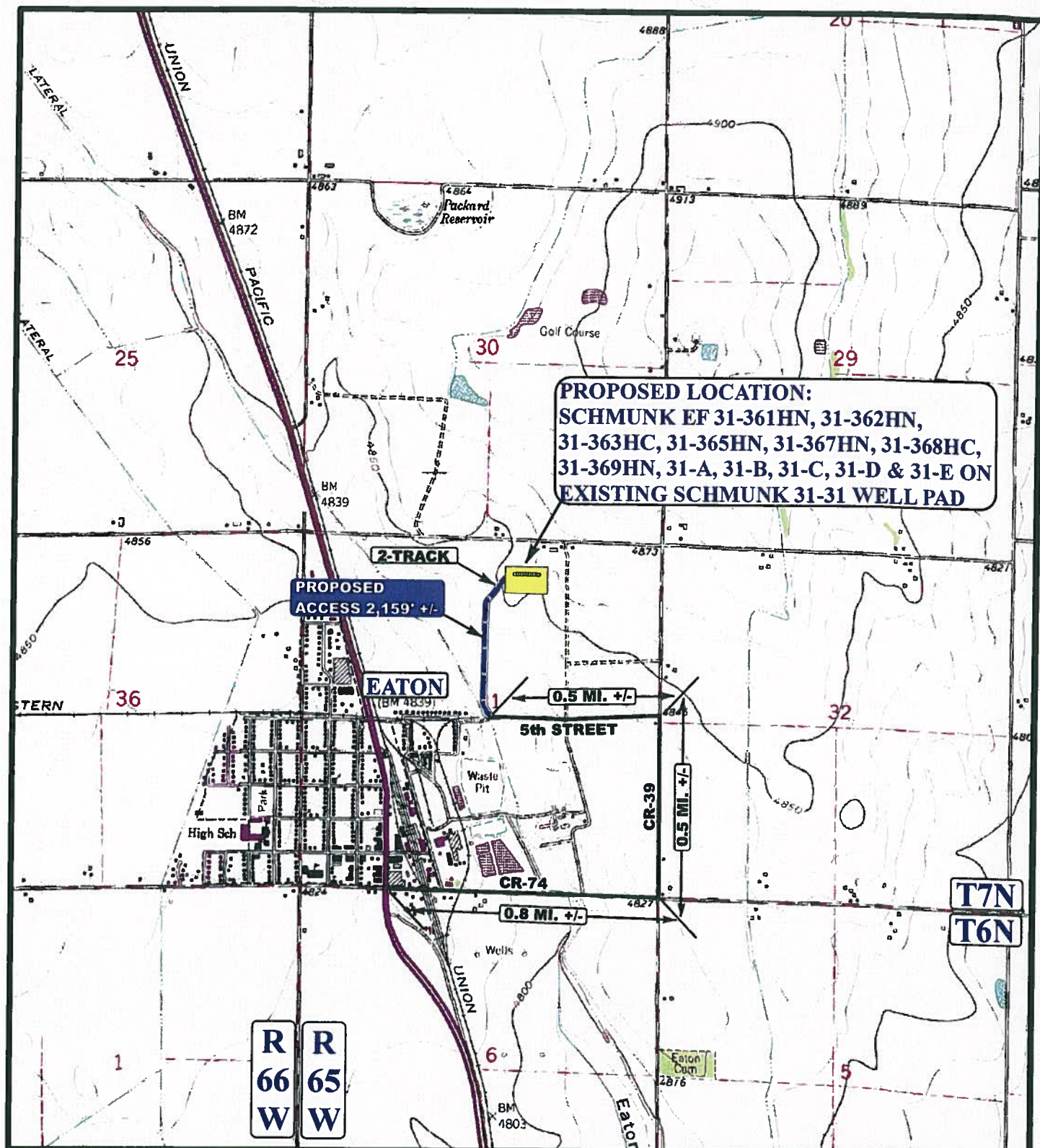
**ACCESS ROAD  
 MAP**

**09 12 13**  
 MONTH DAY YEAR

SCALE: 1:100,000 DRAWN BY: J.L.G. REV: 10-25-B.J.C.







# **LEGEND:**

- EXISTING ROADS
- PROPOSED ACCESS ROAD
- EXISTING 2-TRACK

## **GREAT WESTERN OIL & GAS COMPANY**

SCHMUNK EF 31-361HN, 31-362HN, 31-363HC, 31-365HN,  
 31-367HN, 31-368HC, 31-369HN, 31-A, 31-B, 31-C, 31-D  
 & 31-E ON EXISTING SCHMUNK 31-31 WELL PAD  
 SECTION 31 T7N, R65W, 6th P.M.  
 NW 1/4 NE 1/4



**Utah Engineering & Land Surveying**  
 85 South 200 East Vernal, Utah 84078  
 (435) 789-1017 \* FAX (435) 789-1813



## **ACCESS ROAD MAP**

**09** **12** **13**  
 MONTH DAY YEAR

SCALE: 1"=2000' DRAWN BY: J.L.G. REV: 10-25-13 J.C.

**B**  
 TOPO