

# Shell 797-03B CMA Sample Location Map

Revised: Aug 15, 2013 Garfield County, Colorado

0 50 100 150 200 250  
Feet

Shell 797-03A well pad

Shell 797-03B well pad

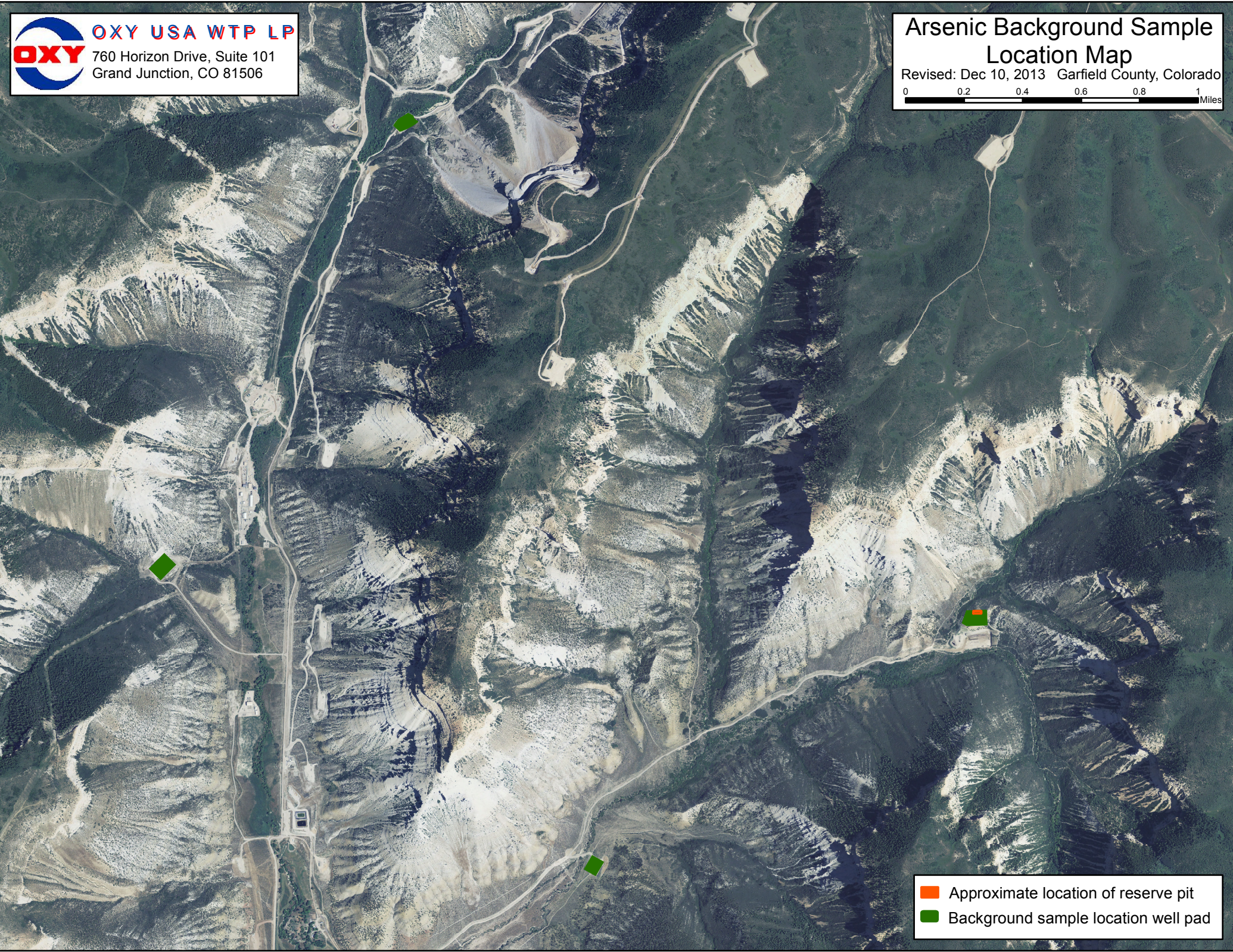
- Approximate location of CMA disposal area
- Confirmation CMA Cuttings Sample Location



# Arsenic Background Sample Location Map

Revised: Dec 10, 2013 Garfield County, Colorado

0 0.2 0.4 0.6 0.8 1 Miles



- Approximate location of reserve pit
- Background sample location well pad