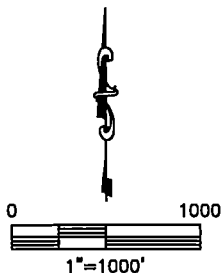
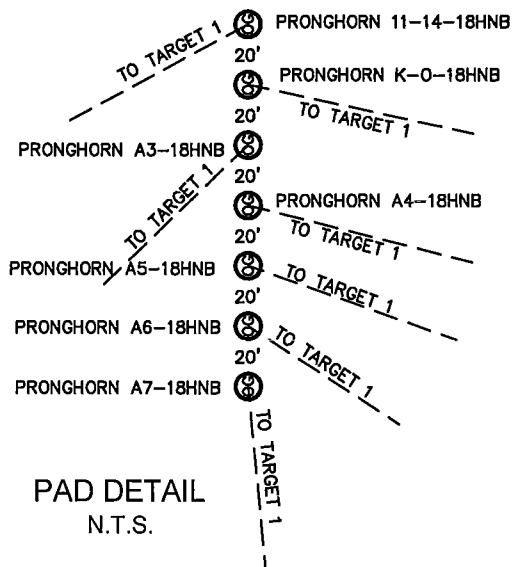
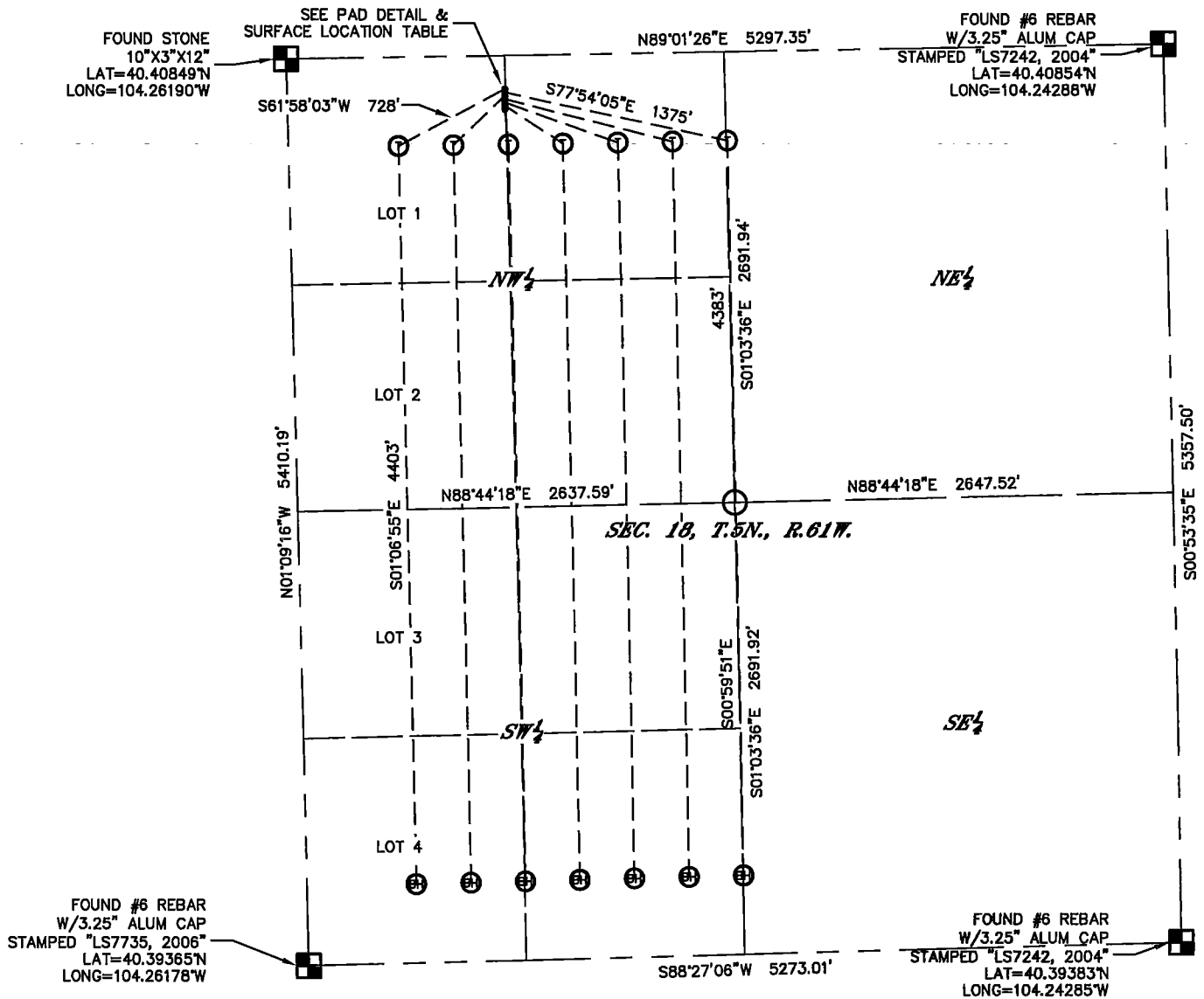


KING SURVEYORS 650 E. GARDEN DR. WINDSOR, CO 80550
MULTI-WELL PLAN (1 of 2)
PRONGHORN F-18 PAD

SECTION: 18
 TOWNSHIP: 5N
 RANGE: 61W



PROJECT#: 2013600

KING SURVEYORS 650 E. GARDEN DR. WINDSOR, CO 80550
MULTI-WELL PLAN (2 of 2)
PRONGHORN F-18 PAD

SECTION: 18
TOWNSHIP: 5N
RANGE: 61W

SURFACE LOCATIONS

(NORTH TO SOUTH)

PRONGHORN 11-14-18HNB
200' FNL
1311' FWL
LAT=40.40796°N
LONG=104.25719°W

PRONGHORN K-O-18HNB
220' FNL
1311' FWL
LAT=40.40790°N
LONG=104.25719°W

PRONGHORN A3-18HNB
240' FNL
1310' FWL
LAT=40.40785°N
LONG=104.25719°W

PRONGHORN A4-18HNB
260' FNL
1310' FWL
LAT=40.40779°N
LONG=104.25719°W

PRONGHORN A5-18HNB
280' FNL
1310' FWL
LAT=40.40774°N
LONG=104.25719°W

PRONGHORN A6-18HNB
300' FNL
1309' FWL
LAT=40.40768°N
LONG=104.25719°W

PRONGHORN A7-18HNB
320' FNL
1309' FWL
LAT=40.40763°N
LONG=104.25719°W

TARGET 1 LOCATIONS

(WEST TO EAST)

PRONGHORN 11-14-18HNB
531' FNL
662' FWL
LAT=40.40704°N
LONG=104.25951°W

PRONGHORN K-O-18HNB
531' FNL
2649' FWL
LAT=40.39496°N
LONG=104.25942°W

BOTTOM HOLE LOCATIONS

(WEST TO EAST)

PRONGHORN 11-14-18HNB
470' FSL
659' FWL
LAT=40.40706°N
LONG=104.25238°W

PRONGHORN K-O-18HNB
470' FSL
2637' FWL
LAT=40.39503°N
LONG=104.25233°W