

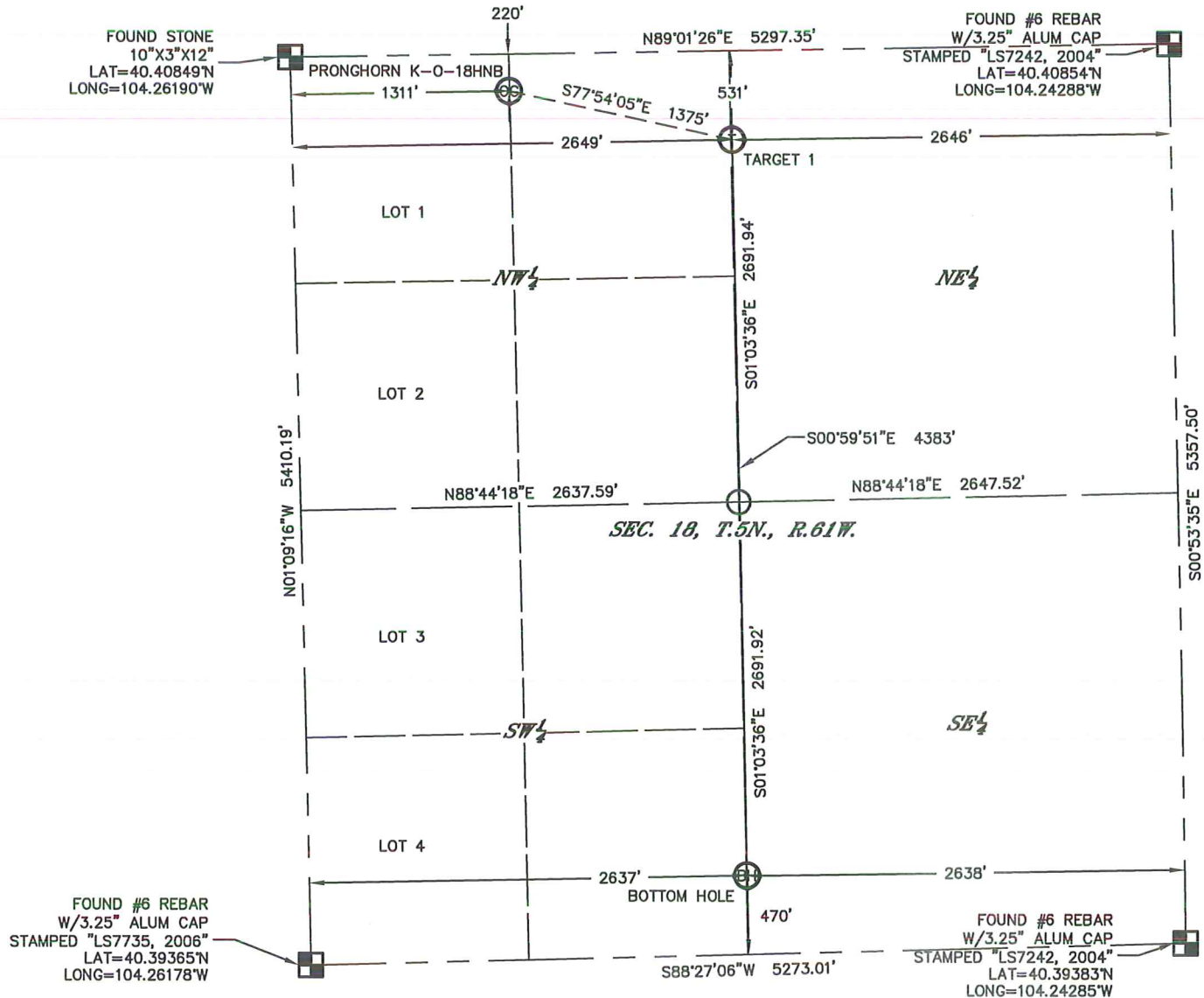
KING SURVEYORS 650 E. GARDEN DR. WINDSOR, CO 80550

# WELL LOCATION CERTIFICATE

PRONGHORN K-O-18HNB

THIS MAP DOES NOT REPRESENT A BOUNDARY SURVEY

SECTION: 18  
TOWNSHIP: 5N  
RANGE: 61W



In accordance with a request from RANDY EDELEN with BONANZA CREEK ENERGY, INC., King Surveyors has determined the surface location of PRONGHORN K-O-18HNB to be 220' from the NORTH line and 1311' from the WEST line and the bottom hole to be 470' from the SOUTH line and 2638' from the EAST line, as measured at right angles, from the section lines of Section 18, Township 5 North, Range 61 West of the Sixth Principal Meridian, County of Weld, State of Colorado.

I hereby state that this Well Location Certificate was prepared by me, or under my direct supervision, that the fieldwork was completed on 10-3-2013, for and on behalf of BONANZA CREEK ENERGY, INC., that this is not a Land Survey Plat or an Improvement Survey Plat, and that it is not to be relied upon for establishment of fence, building, or other future improvement lines.

**SURFACE LOCATION**  
LATITUDE: 40.40790°N  
LONGITUDE: 104.25719°W  
PDOP: 1.4  
ELEV: 4569'  
1/4,1/4: LOT 1

**TARGET**  
LATITUDE: 40.40706°N  
LONGITUDE: 104.25233°W  
1/4,1/4: NW1/4 NE1/4

**BOTTOM HOLE**  
LATITUDE: 40.39503°N  
LONGITUDE: 104.25233°W  
1/4,1/4: SW1/4 SE1/4

## NOTES:

- 1) Bearings shown are Grid Bearings of the Colorado State Plane Coordinate System, North Zone, North American Datum 1983. The lineal dimensions as contained herein are based upon the "U.S. Survey Foot."
- 2) Ground elevations are based on an observed GPS elevation (NAVD 1988 DATUM).
- 3) IMPROVEMENTS: See LOCATION DRAWING for all visible improvements within 500' of the disturbed area.
- 4) SURFACE USE: PASTURE/PRAIRIE
- 5) INSTRUMENT OPERATOR: AARON LUND
- 6) NEAREST CULTURAL ITEMS:  
BUILDING: 5280'+  
BUILDING UNIT: 5280'+  
HIGH OCCUPANCY BUILDING UNIT: 5280'+  
DESIGNATED OUTDOOR ACTIVITY AREA: 5280'+  
PUBLIC ROAD: 5280'+  
ABOVE GROUND UTILITY: 5280'+  
RAILROAD: 5280'+  
PROPERTY LINE: 220' NORTH

## LEGEND

- = FOUND ALIQUOT MONUMENT  
AS DESCRIBED
- = CALCULATED POSITION

**COLORADO LICENSED**  
LAWRENCE S. PEPEK  
33342  
15-2013  
Lawrence S. Pepek - On Behalf Of King Surveyors  
Colorado Licensed Professional Land Surveyor #33642  
PROJECT#: 2013600