

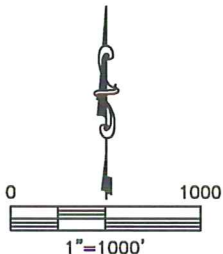
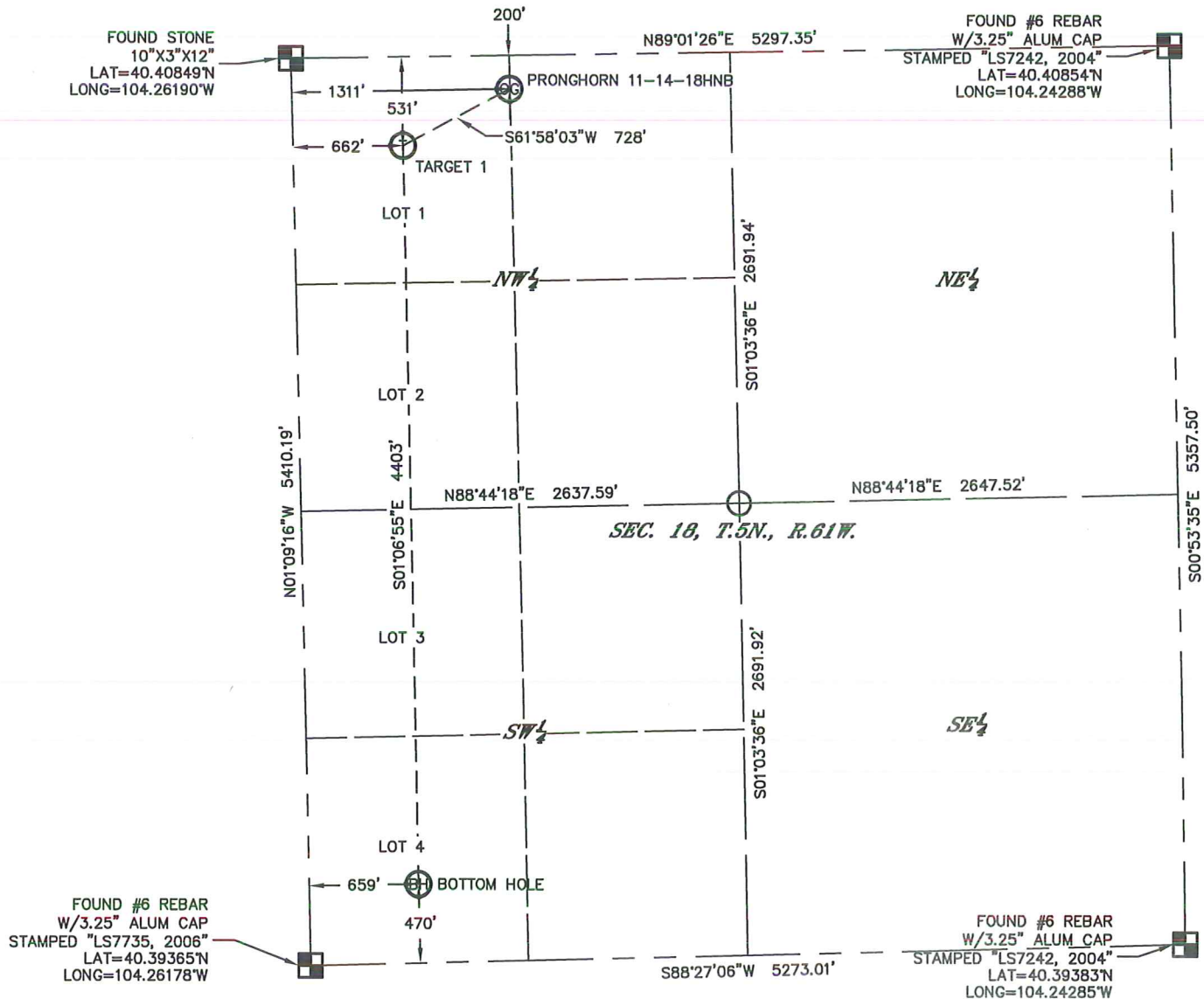
KING SURVEYORS 650 E. GARDEN DR. WINDSOR, CO 80550

WELL LOCATION CERTIFICATE

PRONGHORN 11-14-18HNB

THIS MAP DOES NOT REPRESENT A BOUNDARY SURVEY



SECTION: 18
TOWNSHIP: 5N
RANGE: 61W



NOTES:

- 1) Bearings shown are Grid Bearings of the Colorado State Plane Coordinate System, North Zone, North American Datum 1983. The lineal dimensions as contained herein are based upon the "U.S. Survey Foot."
- 2) Ground elevations are based on an observed GPS elevation (NAVD 1988 DATUM).
- 3) IMPROVEMENTS: See LOCATION DRAWING for all visible improvements within 500' of the disturbed area.
- 4) SURFACE USE: PASTURE/PRAIRIE
- 5) INSTRUMENT OPERATOR: AARON LUND
- 6) NEAREST CULTURAL ITEMS:
BUILDING: 5280'+
BUILDING UNIT: 5280'+
HIGH OCCUPANCY BUILDING UNIT: 5280'+
DESIGNATED OUTDOOR ACTIVITY AREA: 5280'+
PUBLIC ROAD: 5280'+
ABOVE GROUND UTILITY: 5280'+
RAILROAD: 5280'+
PROPERTY LINE: 200' NORTH

LEGEND

-  = FOUND ALIQUOT MONUMENT AS DESCRIBED
-  = CALCULATED POSITION

SURFACE LOCATION
LATITUDE: 40.40796°N
LONGITUDE: 104.25719°W
PDOP: 1.3
ELEV: 4569'
1/4,1/4: LOT 1

TARGET
LATITUDE: 40.40704°N
LONGITUDE: 104.25951°W
1/4,1/4: LOT 1

BOTTOM HOLE
LATITUDE: 40.39496°N
LONGITUDE: 104.25942°W
1/4,1/4: LOT 4

Lawrence S. Popek, Jr. Of King Surveyors
Colorado Licensed Professional Land Surveyor #33642

PROJECT#: 2013600