

# Whiting Oil & Gas

Well Name: **Wildhorse #06-0614H**

Surface Location: Wildhorse #06-0614H Pad Sec.6-T9N-R59W  
North American Datum 1983 , US State Plane 1983 , Colorado Northern Zone

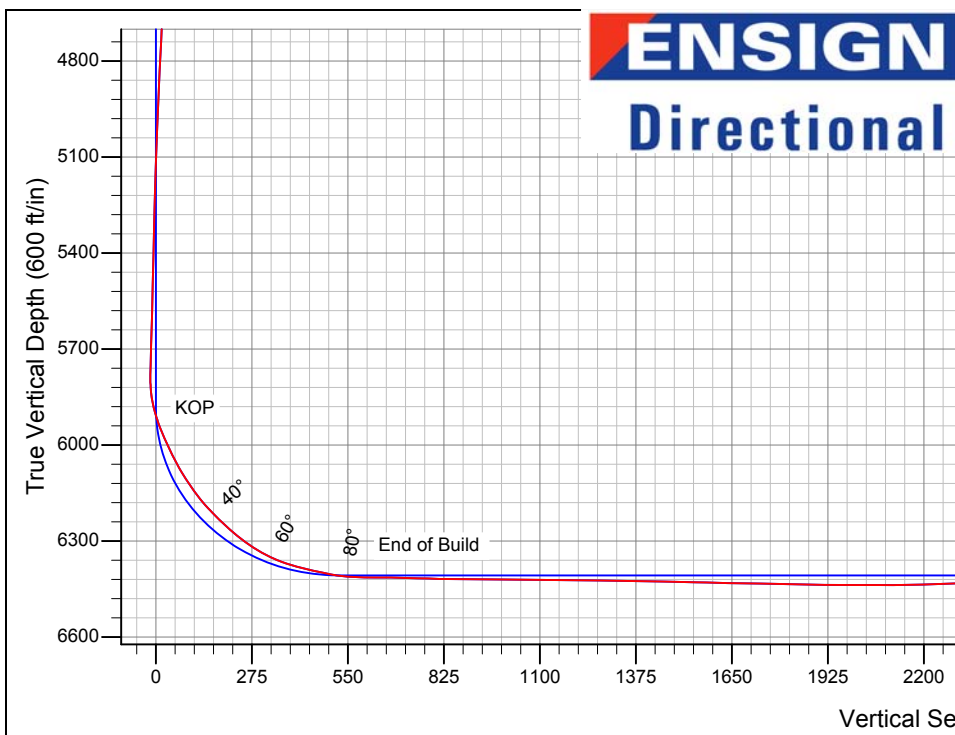
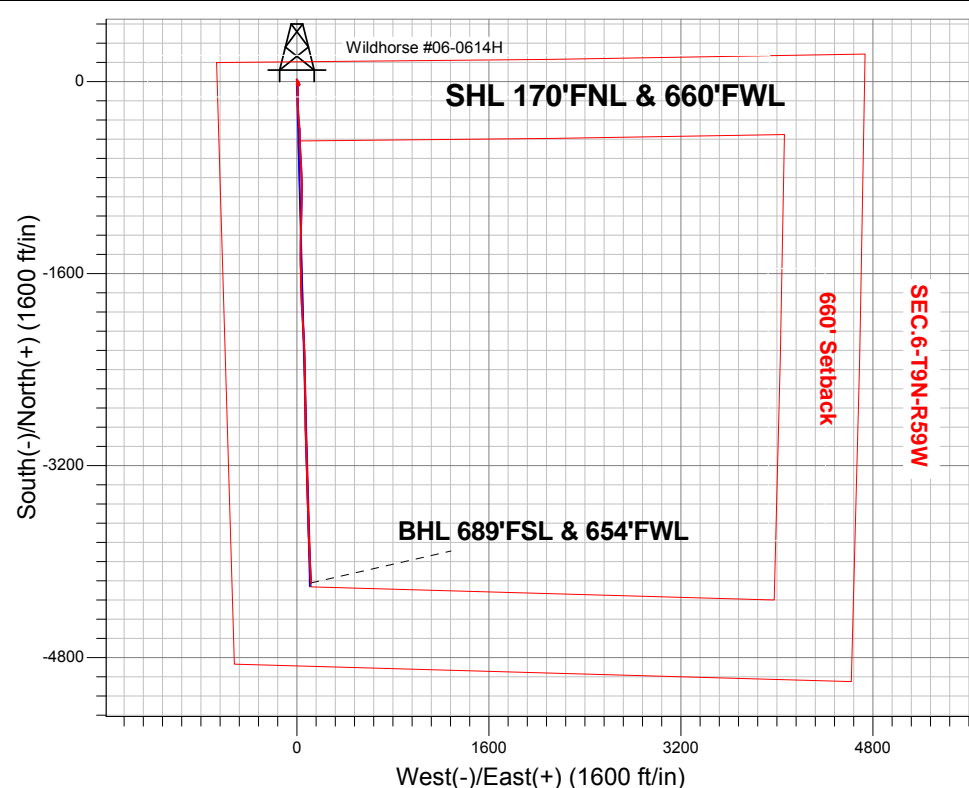
Ground Elevation: 5159.3

+N/-S	+E/-W	Northing	Easting	Latitude	Longitude	Slot
0.0	0.0	1532564.87	3407481.83	40.785994	-104.028478	

Cade 21 RKB - 17.3' WELL @ 5176.6ft (Cade 21 RKB - 17.3')

## FINAL SURVEY

Projected Bottom Hole Location  
10339'MD 6420'TVD 4178'S &  
118'E of SHL 90.6 degree Incl @  
177.0 degree AZM



Wildhorse #06-0614H Pad Sec.6-T9N-R59W  
Wildhorse #06-0614H  
Wellbore #1  
9:11, May 20 2013

### ANNOTATIONS

No annotation data is available.

### LEGEND

- Wildhorse #06-0614H, Wellbore #1, Plan #3 (5-11-13) V0
- Wellbore #1
- Survey #1

BHL 689'FSL & 654'FWL



## **Directional**

### **Whiting Oil & Gas**

**SEC.6-T9N-R59W**

**Wildhorse #06-0614H Pad Sec.6-T9N-R59W**

**Wildhorse #06-0614H**

**Wellbore #1**

**Survey: Survey #1**

### **Standard Survey Report**

**20 May, 2013**



<b>Company:</b>	Whiting Oil & Gas	<b>Local Co-ordinate Reference:</b>	Well Wildhorse #06-0614H
<b>Project:</b>	SEC.6-T9N-R59W	<b>TVD Reference:</b>	WELL @ 5176.6ft (Cade 21 RKB - 17.3')
<b>Site:</b>	Wildhorse #06-0614H Pad Sec.6-T9N-R59W	<b>MD Reference:</b>	WELL @ 5176.6ft (Cade 21 RKB - 17.3')
<b>Well:</b>	Wildhorse #06-0614H	<b>North Reference:</b>	True
<b>Wellbore:</b>	Wellbore #1	<b>Survey Calculation Method:</b>	Minimum Curvature
<b>Design:</b>	Wellbore #1	<b>Database:</b>	Landmark

Survey									
Measured Depth (ft)	Inclination (°)	Azimuth (°)	Vertical Depth (ft)	+N/-S (ft)	+E/-W (ft)	Vertical Section (ft)	Dogleg Rate (°/100ft)	Build Rate (°/100ft)	Turn Rate (°/100ft)
949.0	1.60	156.20	948.6	-16.4	17.8	16.9	0.38	0.32	8.32
1,043.0	1.80	152.00	1,042.6	-19.0	19.1	19.4	0.25	0.21	-4.47
1,138.0	1.90	162.60	1,137.5	-21.8	20.2	22.3	0.37	0.11	11.16
1,232.0	2.30	168.90	1,231.5	-25.1	21.1	25.7	0.49	0.43	6.70
1,324.0	2.10	199.80	1,323.4	-28.5	20.8	29.0	1.29	-0.22	33.59
1,417.0	1.10	249.10	1,416.4	-30.4	19.4	30.9	1.74	-1.08	53.01
1,490.0	1.20	270.00	1,489.4	-30.7	18.0	31.1	0.59	0.14	28.63
1,666.0	1.70	285.30	1,665.3	-30.0	13.6	30.3	0.36	0.28	8.69
1,713.0	1.30	296.20	1,712.3	-29.6	12.5	29.9	1.04	-0.85	23.19
1,803.0	1.00	324.50	1,802.3	-28.5	11.1	28.8	0.70	-0.33	31.44
1,895.0	0.90	309.70	1,894.3	-27.4	10.1	27.6	0.29	-0.11	-16.09
1,988.0	1.40	307.60	1,987.2	-26.2	8.6	26.4	0.54	0.54	-2.26
2,080.0	1.40	310.70	2,079.2	-24.8	6.9	25.0	0.08	0.00	3.37
2,172.0	0.90	291.20	2,171.2	-23.8	5.4	23.9	0.68	-0.54	-21.20
2,268.0	0.90	309.90	2,267.2	-23.0	4.1	23.1	0.30	0.00	19.48
2,363.0	0.60	284.90	2,362.2	-22.4	3.0	22.5	0.46	-0.32	-26.32
2,459.0	0.80	269.30	2,458.2	-22.3	1.9	22.4	0.29	0.21	-16.25
2,553.0	0.50	223.40	2,552.2	-22.6	0.9	22.6	0.61	-0.32	-48.83
2,649.0	0.10	263.30	2,648.2	-22.9	0.6	22.9	0.45	-0.42	41.56
2,743.0	0.60	230.20	2,742.2	-23.3	0.1	23.3	0.55	0.53	-35.21
2,838.0	0.20	313.00	2,837.2	-23.5	-0.4	23.4	0.64	-0.42	87.16
2,934.0	0.70	61.30	2,933.2	-23.1	0.0	23.1	0.82	0.52	112.81
3,028.0	0.80	69.60	3,027.2	-22.6	1.1	22.6	0.16	0.11	8.83
3,123.0	0.70	65.20	3,122.1	-22.1	2.3	22.1	0.12	-0.11	-4.63
3,218.0	1.00	79.60	3,217.1	-21.7	3.6	21.8	0.39	0.32	15.16
3,313.0	0.80	140.80	3,312.1	-22.1	4.8	22.2	0.98	-0.21	64.42
3,408.0	1.00	162.70	3,407.1	-23.4	5.5	23.5	0.42	0.21	23.05
3,503.0	1.10	141.10	3,502.1	-24.9	6.3	25.0	0.43	0.11	-22.74
3,598.0	1.10	134.10	3,597.1	-26.2	7.6	26.4	0.14	0.00	-7.37
3,694.0	1.10	126.70	3,693.1	-27.4	9.0	27.6	0.15	0.00	-7.71
3,788.0	1.60	137.80	3,787.0	-28.9	10.6	29.2	0.60	0.53	11.81
3,883.0	1.80	139.50	3,882.0	-31.0	12.4	31.3	0.22	0.21	1.79
3,977.0	1.30	81.00	3,976.0	-32.0	14.4	32.4	1.68	-0.53	-62.23
4,072.0	1.50	15.30	4,070.9	-30.6	15.8	31.0	1.61	0.21	-69.16
4,167.0	1.10	63.10	4,165.9	-29.0	17.0	29.4	1.17	-0.42	50.32
4,262.0	1.10	80.50	4,260.9	-28.4	18.7	28.9	0.35	0.00	18.32
4,357.0	1.00	95.40	4,355.9	-28.4	20.4	28.9	0.31	-0.11	15.68
4,452.0	2.80	340.50	4,450.9	-26.3	20.5	26.8	3.52	1.89	-120.95
4,548.0	2.30	341.90	4,546.8	-22.2	19.1	22.7	0.52	-0.52	1.46
4,643.0	2.70	337.30	4,641.7	-18.3	17.6	18.8	0.47	0.42	-4.84
4,738.0	2.70	341.00	4,736.6	-14.2	16.0	14.6	0.18	0.00	3.89
4,833.0	2.60	335.90	4,831.5	-10.1	14.4	10.5	0.27	-0.11	-5.37
4,928.0	2.30	337.50	4,926.4	-6.4	12.8	6.7	0.32	-0.32	1.68
5,023.0	2.30	328.90	5,021.3	-3.0	11.1	3.2	0.36	0.00	-9.05
5,118.0	2.20	329.70	5,116.2	0.2	9.2	0.0	0.11	-0.11	0.84
5,213.0	1.90	327.40	5,211.2	3.1	7.4	-3.0	0.33	-0.32	-2.42
5,308.0	1.50	327.10	5,306.1	5.5	5.9	-5.4	0.42	-0.42	-0.32
5,403.0	1.40	326.20	5,401.1	7.5	4.6	-7.4	0.11	-0.11	-0.95
5,498.0	1.40	325.50	5,496.1	9.4	3.3	-9.4	0.02	0.00	-0.74
5,593.0	1.50	332.20	5,591.0	11.5	2.0	-11.4	0.21	0.11	7.05
5,688.0	1.70	343.40	5,686.0	14.0	1.1	-13.9	0.39	0.21	11.79
5,751.0	1.50	331.30	5,749.0	15.6	0.4	-15.6	0.62	-0.32	-19.21
5,783.0	1.40	303.70	5,781.0	16.2	-0.1	-16.2	2.18	-0.31	-86.25
5,814.0	2.50	193.90	5,811.9	15.7	-0.6	-15.7	10.49	3.55	-354.19

<b>Company:</b>	Whiting Oil & Gas	<b>Local Co-ordinate Reference:</b>	Well Wildhorse #06-0614H
<b>Project:</b>	SEC.6-T9N-R59W	<b>TVD Reference:</b>	WELL @ 5176.6ft (Cade 21 RKB - 17.3')
<b>Site:</b>	Wildhorse #06-0614H Pad Sec.6-T9N-R59W	<b>MD Reference:</b>	WELL @ 5176.6ft (Cade 21 RKB - 17.3')
<b>Well:</b>	Wildhorse #06-0614H	<b>North Reference:</b>	True
<b>Wellbore:</b>	Wellbore #1	<b>Survey Calculation Method:</b>	Minimum Curvature
<b>Design:</b>	Wellbore #1	<b>Database:</b>	Landmark

Survey										
Measured Depth (ft)	Inclination (°)	Azimuth (°)	Vertical Depth (ft)	+N/-S (ft)	+E/-W (ft)	Vertical Section (ft)	Dogleg Rate (°/100ft)	Build Rate (°/100ft)	Turn Rate (°/100ft)	
5,846.0	6.90	173.80	5,843.8	13.1	-0.6	-13.1	14.48	13.75	-62.81	
5,877.0	11.30	169.40	5,874.4	8.3	0.2	-8.3	14.36	14.19	-14.19	
5,909.0	15.40	168.90	5,905.6	1.0	1.6	-1.0	12.82	12.81	-1.56	
5,941.0	18.60	170.80	5,936.2	-8.2	3.2	8.3	10.15	10.00	5.94	
5,972.0	21.70	172.90	5,965.3	-18.7	4.7	18.9	10.27	10.00	6.77	
6,004.0	23.50	174.70	5,994.8	-31.0	6.0	31.1	6.03	5.63	5.63	
6,036.0	23.50	175.00	6,024.2	-43.7	7.2	43.9	0.37	0.00	0.94	
6,067.0	25.50	177.00	6,052.4	-56.5	8.1	56.7	6.98	6.45	6.45	
6,099.0	28.20	178.60	6,080.9	-70.9	8.6	71.1	8.73	8.44	5.00	
6,130.0	31.00	179.40	6,107.9	-86.3	8.9	86.5	9.12	9.03	2.58	
6,162.0	33.20	181.00	6,135.0	-103.3	8.8	103.5	7.37	6.88	5.00	
6,194.0	35.30	180.70	6,161.4	-121.3	8.5	121.4	6.58	6.56	-0.94	
6,225.0	38.30	181.40	6,186.2	-139.8	8.2	140.0	9.77	9.68	2.26	
6,257.0	41.60	180.50	6,210.8	-160.4	7.9	160.5	10.47	10.31	-2.81	
6,289.0	44.40	179.30	6,234.2	-182.2	7.9	182.3	9.12	8.75	-3.75	
6,320.0	44.80	179.10	6,256.2	-204.0	8.2	204.1	1.37	1.29	-0.65	
6,352.0	47.70	177.90	6,278.4	-227.1	8.8	227.2	9.46	9.06	-3.75	
6,384.0	50.70	175.90	6,299.3	-251.2	10.1	251.4	10.50	9.38	-6.25	
6,415.0	54.30	174.90	6,318.1	-275.8	12.1	276.0	11.89	11.61	-3.23	
6,447.0	58.70	174.70	6,335.8	-302.3	14.5	302.6	13.76	13.75	-0.63	
6,478.0	63.00	174.90	6,350.9	-329.3	17.0	329.6	13.88	13.87	0.65	
6,510.0	67.50	175.40	6,364.3	-358.2	19.4	358.6	14.13	14.06	1.56	
6,542.0	72.20	175.70	6,375.3	-388.2	21.8	388.6	14.71	14.69	0.94	
6,573.0	75.10	177.50	6,384.0	-417.9	23.5	418.3	10.89	9.35	5.81	
6,605.0	75.60	178.40	6,392.1	-448.8	24.6	449.3	3.14	1.56	2.81	
6,637.0	77.20	178.40	6,399.7	-479.9	25.5	480.4	5.00	5.00	0.00	
6,669.0	79.80	178.70	6,406.0	-511.2	26.3	511.7	8.18	8.13	0.94	
6,700.0	83.80	178.00	6,410.5	-541.9	27.2	542.4	13.10	12.90	-2.26	
6,731.0	88.10	178.00	6,412.6	-572.8	28.3	573.3	13.87	13.87	0.00	
6,814.0	90.00	176.10	6,414.0	-655.7	32.5	656.3	3.24	2.29	-2.29	
6,845.0	88.70	175.90	6,414.4	-686.6	34.7	687.3	4.24	-4.19	-0.65	
6,876.0	88.10	176.30	6,415.2	-717.5	36.8	718.2	2.33	-1.94	1.29	
6,907.0	88.30	178.20	6,416.2	-748.4	38.3	749.2	6.16	0.65	6.13	
6,938.0	88.50	178.60	6,417.1	-779.4	39.2	780.2	1.44	0.65	1.29	
6,969.0	88.30	178.90	6,417.9	-810.4	39.8	811.2	1.16	-0.65	0.97	
6,999.0	89.00	178.60	6,418.6	-840.4	40.5	841.2	2.54	2.33	-1.00	
7,030.0	89.10	178.90	6,419.2	-871.4	41.2	872.2	1.02	0.32	0.97	
7,061.0	90.50	180.70	6,419.3	-902.4	41.3	903.1	7.36	4.52	5.81	
7,091.0	90.60	180.80	6,419.0	-932.4	40.9	933.1	0.47	0.33	0.33	
7,121.0	89.30	181.00	6,419.0	-962.4	40.4	963.1	4.38	-4.33	0.67	
7,152.0	88.20	180.70	6,419.7	-993.4	40.0	994.1	3.68	-3.55	-0.97	
7,183.0	88.50	180.70	6,420.6	-1,024.3	39.6	1,025.0	0.97	0.97	0.00	
7,214.0	89.00	181.40	6,421.3	-1,055.3	39.0	1,056.0	2.77	1.61	2.26	
7,245.0	89.80	181.90	6,421.6	-1,086.3	38.1	1,086.9	3.04	2.58	1.61	
7,276.0	90.00	181.70	6,421.6	-1,117.3	37.1	1,117.9	0.91	0.65	-0.65	
7,306.0	89.90	181.90	6,421.7	-1,147.3	36.2	1,147.8	0.75	-0.33	0.67	
7,337.0	89.20	181.20	6,421.9	-1,178.3	35.4	1,178.8	3.19	-2.26	-2.26	
7,368.0	89.10	181.20	6,422.4	-1,209.3	34.7	1,209.8	0.32	-0.32	0.00	
7,399.0	89.20	180.80	6,422.8	-1,240.2	34.2	1,240.7	1.33	0.32	-1.29	
7,430.0	89.30	181.40	6,423.2	-1,271.2	33.6	1,271.7	1.96	0.32	1.94	
7,460.0	89.30	181.40	6,423.6	-1,301.2	32.8	1,301.6	0.00	0.00	0.00	
7,490.0	88.90	180.80	6,424.1	-1,331.2	32.3	1,331.6	2.40	-1.33	-2.00	
7,521.0	89.30	180.80	6,424.6	-1,362.2	31.8	1,362.6	1.29	1.29	0.00	
7,551.0	89.30	180.80	6,424.9	-1,392.2	31.4	1,392.6	0.00	0.00	0.00	

<b>Company:</b>	Whiting Oil & Gas	<b>Local Co-ordinate Reference:</b>	Well Wildhorse #06-0614H
<b>Project:</b>	SEC.6-T9N-R59W	<b>TVD Reference:</b>	WELL @ 5176.6ft (Cade 21 RKB - 17.3')
<b>Site:</b>	Wildhorse #06-0614H Pad Sec.6-T9N-R59W	<b>MD Reference:</b>	WELL @ 5176.6ft (Cade 21 RKB - 17.3')
<b>Well:</b>	Wildhorse #06-0614H	<b>North Reference:</b>	True
<b>Wellbore:</b>	Wellbore #1	<b>Survey Calculation Method:</b>	Minimum Curvature
<b>Design:</b>	Wellbore #1	<b>Database:</b>	Landmark

Survey										
Measured Depth (ft)	Inclination (°)	Azimuth (°)	Vertical Depth (ft)	+N/-S (ft)	+E/-W (ft)	Vertical Section (ft)	Dogleg Rate (°/100ft)	Build Rate (°/100ft)	Turn Rate (°/100ft)	
7,582.0	88.50	179.60	6,425.5	-1,423.2	31.3	1,423.5	4.65	-2.58	-3.87	
7,612.0	88.50	179.80	6,426.3	-1,453.2	31.5	1,453.5	0.67	0.00	0.67	
7,643.0	88.50	180.00	6,427.1	-1,484.2	31.5	1,484.5	0.64	0.00	0.65	
7,674.0	88.50	179.30	6,427.9	-1,515.2	31.7	1,515.5	2.26	0.00	-2.26	
7,705.0	88.50	178.20	6,428.7	-1,546.1	32.4	1,546.5	3.55	0.00	-3.55	
7,736.0	88.70	178.20	6,429.5	-1,577.1	33.4	1,577.5	0.65	0.65	0.00	
7,766.0	88.50	178.70	6,430.2	-1,607.1	34.2	1,607.4	1.79	-0.67	1.67	
7,797.0	88.30	178.90	6,431.1	-1,638.1	34.8	1,638.4	0.91	-0.65	0.65	
7,828.0	88.90	178.40	6,431.8	-1,669.1	35.5	1,669.4	2.52	1.94	-1.61	
7,859.0	89.20	178.60	6,432.4	-1,700.1	36.4	1,700.4	1.16	0.97	0.65	
7,890.0	89.10	178.20	6,432.8	-1,731.0	37.2	1,731.4	1.33	-0.32	-1.29	
7,921.0	89.00	178.20	6,433.3	-1,762.0	38.2	1,762.4	0.32	-0.32	0.00	
7,951.0	88.70	178.20	6,433.9	-1,792.0	39.1	1,792.4	1.00	-1.00	0.00	
7,982.0	88.50	178.00	6,434.7	-1,823.0	40.2	1,823.4	0.91	-0.65	-0.65	
8,013.0	88.50	177.70	6,435.5	-1,853.9	41.3	1,854.4	0.97	0.00	-0.97	
8,044.0	89.10	177.30	6,436.2	-1,884.9	42.7	1,885.4	2.33	1.94	-1.29	
8,074.0	89.10	177.20	6,436.6	-1,914.9	44.1	1,915.4	0.33	0.00	-0.33	
8,105.0	89.30	176.50	6,437.1	-1,945.8	45.8	1,946.3	2.35	0.65	-2.26	
8,135.0	89.40	175.40	6,437.4	-1,975.7	47.9	1,976.3	3.68	0.33	-3.67	
8,166.0	90.10	175.70	6,437.5	-2,006.6	50.3	2,007.3	2.46	2.26	0.97	
8,197.0	90.00	177.00	6,437.5	-2,037.6	52.3	2,038.3	4.21	-0.32	4.19	
8,228.0	90.90	178.00	6,437.3	-2,068.5	53.7	2,069.2	4.34	2.90	3.23	
8,258.0	90.70	177.00	6,436.8	-2,098.5	55.0	2,099.2	3.40	-0.67	-3.33	
8,289.0	90.10	176.30	6,436.6	-2,129.5	56.8	2,130.2	2.97	-1.94	-2.26	
8,320.0	90.30	175.90	6,436.5	-2,160.4	58.9	2,161.2	1.44	0.65	-1.29	
8,351.0	91.10	177.30	6,436.1	-2,191.3	60.7	2,192.2	5.20	2.58	4.52	
8,381.0	92.10	177.90	6,435.3	-2,221.3	62.0	2,222.2	3.89	3.33	2.00	
8,412.0	92.50	177.70	6,434.1	-2,252.2	63.2	2,253.1	1.44	1.29	-0.65	
8,443.0	92.80	177.50	6,432.6	-2,283.2	64.5	2,284.1	1.16	0.97	-0.65	
8,473.0	92.50	177.70	6,431.2	-2,313.1	65.7	2,314.1	1.20	-1.00	0.67	
8,504.0	91.90	179.30	6,430.0	-2,344.1	66.5	2,345.0	5.51	-1.94	5.16	
8,534.0	91.60	180.00	6,429.1	-2,374.1	66.7	2,375.0	2.54	-1.00	2.33	
8,565.0	91.60	180.10	6,428.3	-2,405.1	66.7	2,406.0	0.32	0.00	0.32	
8,596.0	91.60	179.30	6,427.4	-2,436.1	66.9	2,437.0	2.58	0.00	-2.58	
8,627.0	91.30	179.30	6,426.6	-2,467.0	67.2	2,468.0	0.97	-0.97	0.00	
8,657.0	91.40	178.40	6,425.9	-2,497.0	67.8	2,497.9	3.02	0.33	-3.00	
8,688.0	91.60	179.30	6,425.1	-2,528.0	68.5	2,528.9	2.97	0.65	2.90	
8,719.0	91.50	179.30	6,424.3	-2,559.0	68.8	2,559.9	0.32	-0.32	0.00	
8,749.0	92.90	179.60	6,423.1	-2,589.0	69.1	2,589.9	4.77	4.67	1.00	
8,780.0	93.60	178.70	6,421.4	-2,619.9	69.6	2,620.8	3.67	2.26	-2.90	
8,811.0	92.60	179.40	6,419.7	-2,650.9	70.1	2,651.8	3.94	-3.23	2.26	
8,842.0	91.40	180.10	6,418.6	-2,681.8	70.2	2,682.8	4.48	-3.87	2.26	
8,872.0	91.00	179.30	6,418.0	-2,711.8	70.4	2,712.8	2.98	-1.33	-2.67	
8,903.0	90.70	178.70	6,417.5	-2,742.8	70.9	2,743.7	2.16	-0.97	-1.94	
8,934.0	89.70	179.30	6,417.4	-2,773.8	71.5	2,774.7	3.76	-3.23	1.94	
8,965.0	89.30	179.10	6,417.7	-2,804.8	71.9	2,805.7	1.44	-1.29	-0.65	
8,996.0	89.70	179.30	6,417.9	-2,835.8	72.3	2,836.7	1.44	1.29	0.65	
9,027.0	90.90	179.40	6,417.8	-2,866.8	72.7	2,867.7	3.88	3.87	0.32	
9,058.0	90.00	177.00	6,417.5	-2,897.8	73.7	2,898.7	8.27	-2.90	-7.74	
9,087.0	90.00	176.80	6,417.5	-2,926.8	75.2	2,927.7	0.69	0.00	-0.69	
9,118.0	90.80	178.00	6,417.3	-2,957.7	76.6	2,958.7	4.65	2.58	3.87	
9,149.0	90.00	179.30	6,417.1	-2,988.7	77.4	2,989.7	4.92	-2.58	4.19	
9,180.0	90.60	180.50	6,416.9	-3,019.7	77.4	3,020.7	4.33	1.94	3.87	
9,210.0	90.70	179.80	6,416.6	-3,049.7	77.4	3,050.7	2.36	0.33	-2.33	

<b>Company:</b>	Whiting Oil & Gas	<b>Local Co-ordinate Reference:</b>	Well Wildhorse #06-0614H
<b>Project:</b>	SEC.6-T9N-R59W	<b>TVD Reference:</b>	WELL @ 5176.6ft (Cade 21 RKB - 17.3')
<b>Site:</b>	Wildhorse #06-0614H Pad Sec.6-T9N-R59W	<b>MD Reference:</b>	WELL @ 5176.6ft (Cade 21 RKB - 17.3')
<b>Well:</b>	Wildhorse #06-0614H	<b>North Reference:</b>	True
<b>Wellbore:</b>	Wellbore #1	<b>Survey Calculation Method:</b>	Minimum Curvature
<b>Design:</b>	Wellbore #1	<b>Database:</b>	Landmark

Survey										
Measured Depth (ft)	Inclination (°)	Azimuth (°)	Vertical Depth (ft)	+N/-S (ft)	+E/-W (ft)	Vertical Section (ft)	Dogleg Rate (°/100ft)	Build Rate (°/100ft)	Turn Rate (°/100ft)	
9,241.0	89.50	178.30	6,416.5	-3,080.7	77.9	3,081.7	6.20	-3.87	-4.84	
9,271.0	88.50	177.70	6,417.1	-3,110.7	78.9	3,111.7	3.89	-3.33	-2.00	
9,301.0	89.60	177.50	6,417.6	-3,140.6	80.2	3,141.7	3.73	3.67	-0.67	
9,332.0	89.80	177.30	6,417.7	-3,171.6	81.6	3,172.7	0.91	0.65	-0.65	
9,362.0	90.00	177.90	6,417.8	-3,201.6	82.8	3,202.7	2.11	0.67	2.00	
9,393.0	90.10	178.90	6,417.8	-3,232.6	83.7	3,233.7	3.24	0.32	3.23	
9,424.0	89.70	178.90	6,417.8	-3,263.6	84.3	3,264.7	1.29	-1.29	0.00	
9,455.0	90.00	178.20	6,417.9	-3,294.6	85.1	3,295.7	2.46	0.97	-2.26	
9,486.0	90.20	178.40	6,417.8	-3,325.5	86.0	3,326.7	0.91	0.65	0.65	
9,517.0	90.40	178.00	6,417.7	-3,356.5	87.0	3,357.7	1.44	0.65	-1.29	
9,547.0	91.00	177.70	6,417.3	-3,386.5	88.1	3,387.7	2.24	2.00	-1.00	
9,578.0	91.30	177.00	6,416.7	-3,417.5	89.5	3,418.6	2.46	0.97	-2.26	
9,609.0	91.20	178.20	6,416.0	-3,448.4	90.8	3,449.6	3.88	-0.32	3.87	
9,640.0	91.40	178.70	6,415.3	-3,479.4	91.7	3,480.6	1.74	0.65	1.61	
9,670.0	90.70	179.30	6,414.8	-3,509.4	92.2	3,510.6	3.07	-2.33	2.00	
9,701.0	90.20	178.90	6,414.5	-3,540.4	92.7	3,541.6	2.07	-1.61	-1.29	
9,732.0	89.40	178.90	6,414.6	-3,571.4	93.3	3,572.6	2.58	-2.58	0.00	
9,764.0	89.10	178.70	6,415.0	-3,603.4	93.9	3,604.6	1.13	-0.94	-0.63	
9,796.0	88.70	178.00	6,415.7	-3,635.4	94.9	3,636.6	2.52	-1.25	-2.19	
9,827.0	88.70	178.00	6,416.4	-3,666.3	95.9	3,667.6	0.00	0.00	0.00	
9,859.0	88.90	177.90	6,417.0	-3,698.3	97.1	3,699.6	0.70	0.63	-0.31	
9,891.0	89.00	177.90	6,417.6	-3,730.3	98.3	3,731.6	0.31	0.31	0.00	
9,922.0	89.50	177.70	6,418.0	-3,761.3	99.5	3,762.6	1.74	1.61	-0.65	
9,954.0	89.50	177.90	6,418.3	-3,793.2	100.7	3,794.6	0.62	0.00	0.63	
9,983.0	89.90	177.90	6,418.4	-3,822.2	101.7	3,823.6	1.38	1.38	0.00	
10,016.0	90.50	178.00	6,418.3	-3,855.2	102.9	3,856.6	1.84	1.82	0.30	
10,048.0	90.70	178.00	6,418.0	-3,887.2	104.0	3,888.6	0.63	0.63	0.00	
10,080.0	89.10	178.00	6,418.1	-3,919.1	105.2	3,920.6	5.00	-5.00	0.00	
10,111.0	88.10	177.90	6,418.8	-3,950.1	106.3	3,951.5	3.24	-3.23	-0.32	
10,143.0	88.30	177.70	6,419.8	-3,982.1	107.5	3,983.5	0.88	0.63	-0.63	
10,175.0	88.50	176.60	6,420.7	-4,014.0	109.1	4,015.5	3.49	0.63	-3.44	
10,206.0	89.60	177.00	6,421.2	-4,045.0	110.8	4,046.5	3.78	3.55	1.29	
10,238.0	90.00	176.30	6,421.3	-4,076.9	112.7	4,078.5	2.52	1.25	-2.19	
10,270.0	90.60	177.00	6,421.2	-4,108.9	114.6	4,110.5	2.88	1.88	2.19	
10,289.0	90.60	176.80	6,421.0	-4,127.8	115.6	4,129.4	1.05	0.00	-1.05	
10,339.0	90.60	177.00	6,420.4	-4,177.8	118.3	4,179.4	0.40	0.00	0.40	
BHL 660'FSL & 646'FWL										

Checked By: _____	Approved By: _____	Date: _____
-------------------	--------------------	-------------