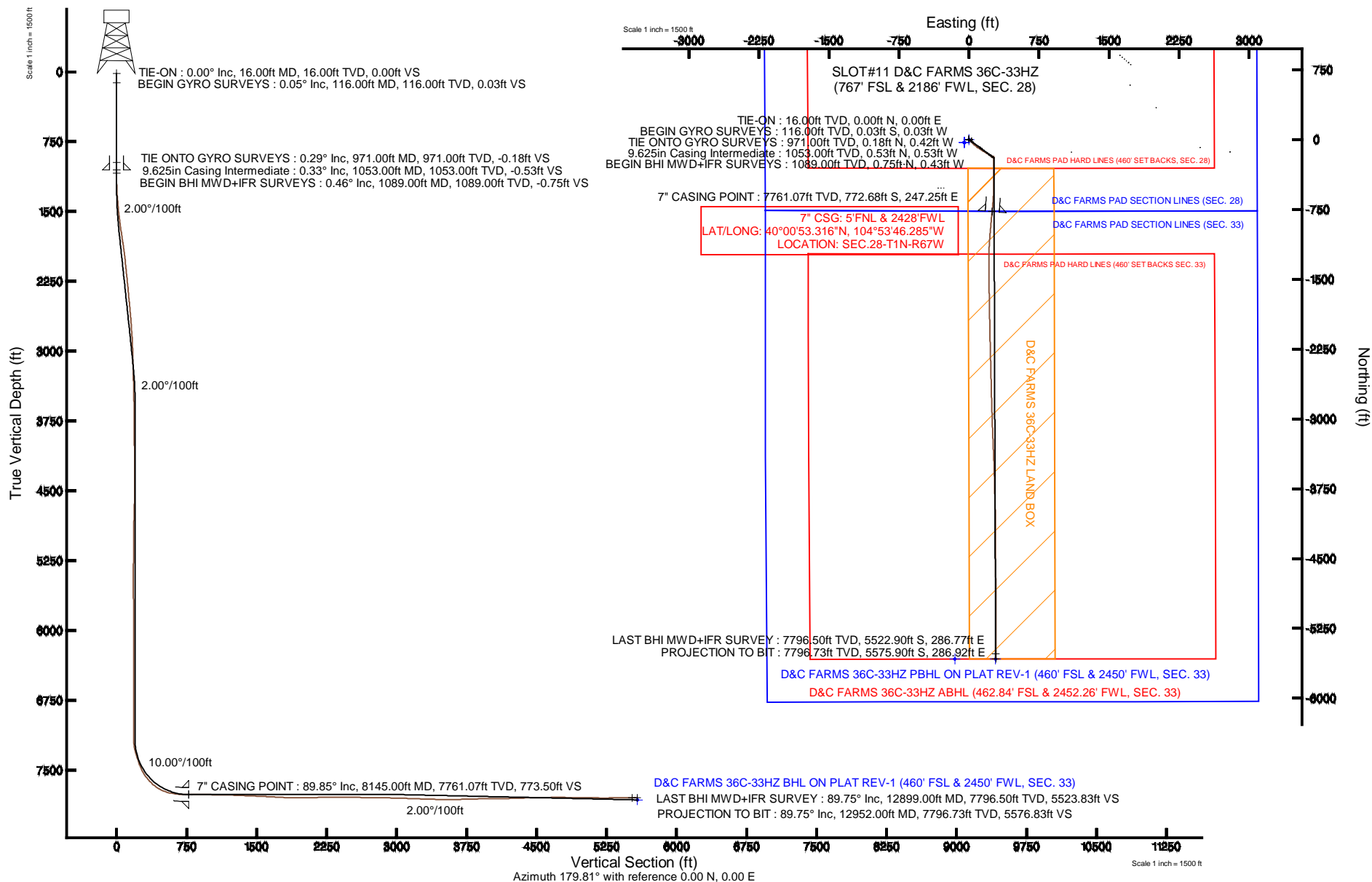


# KERR-MCGEE OIL & GAS ONSHORE LP

Location: COLORADO Slot: SLOT#11 D&C FARMS 36C-33HZ (767' FSL & 2186' FWL, SEC. 28)  
 Field: WELD COUNTY (KERR MCGEE) Well: D&C FARMS 36C-33HZ  
 Facility: SEC.28-T1N-R67W Wellbore: D&C FARMS 36C-33HZ PWB

Plot reference wellpath is D&C FARMS 36C-33HZ (REV-B.0) PWP

True vertical depths are referenced to XTREME 24 (RKB)	Grid System: NAD83 / Lambert Colorado SP, Northern Zone (501), US feet
Measured depths are referenced to XTREME 24 (RKB)	North Reference: True north
XTREME 24 (RKB) to Mean Sea Level: 5026 feet	Scale: True distance
Mean Sea Level to Mud line (At Slot: SLOT#11 D&C FARMS 36C-33HZ (767' FSL & 2186' FWL, SEC. 28)): 0 feet	Depths are in feet
Coordinates are in feet referenced to Slot	Created by: robale01 on 20Nov2013



## REFERENCE WELLPATH IDENTIFICATION

Operator	KERR-MCGEE OIL & GAS ONSHORE LP	Slot	SLOT#11 D&C FARMS 36C-33HZ (767' FSL & 2186' FWL, SEC
Area	COLORADO	Well	D&C FARMS 36C-33HZ
Field	WELD COUNTY (KERR MCGEE)	Wellbore	D&C FARMS 36C-33HZ AWB
Facility	SEC.28-T1N-R67W		

## REPORT SETUP INFORMATION

Projection System	NAD83 / Lambert Colorado SP, Northern Zone (501), US feet	Software System	WellArchitect® 4.0.0
North Reference	True	User	Robiale01
Scale	0.999965	Report Generated	20/Nov/2013 at 14:14
Convergence at slot	n/a	Database/Source file	WellArchitectDB/_D_C_FARMS_36C-33HZ_AWB.xml

## WELLPATH LOCATION

	Local coordinates		Grid coordinates		Geographic coordinates	
	North[ft]	East[ft]	Easting[US ft]	Northing[US ft]	Latitude	Longitude
Slot Location	1412470.36	2715429.67	3168868.91	1249588.49	40°01'00.952"N	104°53'49.463"W
Facility Reference Pt			316923.76	121463.46	36°32'36.656"N	114°37'52.006"W
Field Reference Pt			3197771.84	1268891.29	40°04'09.600"N	104°47'36.000"W

## WELLPATH DATUM

Calculation method	Minimum curvature	XTREME 24 (RKB) to Facility Vertical Datum	5026.00ft
Horizontal Reference Pt	Slot	XTREME 24 (RKB) to Mean Sea Level	5026.00ft
Vertical Reference Pt	XTREME 24 (RKB)	XTREME 24 (RKB) to Mud Line at Slot (SLOT#11 D&C FARMS 36C-33HZ (767' FSL & 2186' FWL, SEC. 28))	5026.00ft
MD Reference Pt	XTREME 24 (RKB)	Section Origin	N 0.00, E 0.00 ft
Field Vertical Reference	Mean Sea Level	Section Azimuth	179.81°

# Actual Wellpath Report

D&C FARMS 36C-33HZ AWP

Page 2 of 6

## REFERENCE WELLPATH IDENTIFICATION

Operator	KERR-MCGEE OIL & GAS ONSHORE LP	Slot	SLOT#11 D&C FARMS 36C-33HZ (767' FSL & 2186' FWL, SEC
Area	COLORADO	Well	D&C FARMS 36C-33HZ
Field	WELD COUNTY (KERR MCGEE)	Wellbore	D&C FARMS 36C-33HZ AWB
Facility	SEC.28-T1N-R67W		

## WELLPATH DATA (127 stations) † = interpolated/extrapolated station

MD [ft]	Inclination [°]	Azimuth [°]	TVD [ft]	Vert Sect [ft]	North [ft]	East [ft]	Latitude	Longitude	DLS [°/100ft]	Comments
0.00†	0.000	224.910	0.00	0.00	0.00	0.00	40°01'00.952"N	104°53'49.463"W	0.00	
16.00	0.000	224.910	16.00	0.00	0.00	0.00	40°01'00.952"N	104°53'49.463"W	0.00	TIE-ON
116.00	0.050	224.910	116.00	0.03	-0.03	-0.03	40°01'00.952"N	104°53'49.463"W	0.05	BEGIN GYRO SURVEYS
216.00	0.120	120.630	216.00	0.12	-0.12	0.03	40°01'00.951"N	104°53'49.463"W	0.14	
316.00	0.170	163.500	316.00	0.31	-0.31	0.16	40°01'00.949"N	104°53'49.461"W	0.12	
416.00	0.220	309.020	416.00	0.33	-0.33	0.05	40°01'00.949"N	104°53'49.462"W	0.37	
516.00	0.100	89.450	516.00	0.21	-0.21	-0.01	40°01'00.950"N	104°53'49.463"W	0.30	
616.00	0.170	210.530	616.00	0.34	-0.34	0.00	40°01'00.949"N	104°53'49.463"W	0.24	
716.00	0.180	345.790	716.00	0.31	-0.31	-0.11	40°01'00.949"N	104°53'49.464"W	0.32	
816.00	0.130	329.820	816.00	0.06	-0.06	-0.21	40°01'00.951"N	104°53'49.466"W	0.07	
916.00	0.060	334.690	916.00	-0.08	0.08	-0.29	40°01'00.953"N	104°53'49.467"W	0.07	
971.00	0.290	302.410	971.00	-0.18	0.18	-0.42	40°01'00.954"N	104°53'49.468"W	0.44	TIE ONTO GYRO SURVEYS
1089.00	0.460	30.550	1089.00	-0.75	0.75	-0.43	40°01'00.959"N	104°53'49.468"W	0.45	BEGIN BHI MWD+IFR SURVEYS
1182.00	1.660	125.740	1181.98	-0.28	0.29	0.86	40°01'00.955"N	104°53'49.452"W	1.89	
1277.00	4.230	133.940	1276.85	2.96	-2.95	4.50	40°01'00.923"N	104°53'49.405"W	2.73	
1371.00	5.210	144.860	1370.53	8.88	-8.85	9.45	40°01'00.865"N	104°53'49.342"W	1.41	
1465.00	7.480	140.360	1463.95	17.10	-17.05	15.81	40°01'00.784"N	104°53'49.260"W	2.47	
1559.00	9.810	132.300	1556.88	27.24	-27.15	25.64	40°01'00.684"N	104°53'49.133"W	2.79	
1653.00	11.690	130.960	1649.23	38.91	-38.78	38.75	40°01'00.569"N	104°53'48.965"W	2.02	
1747.00	12.440	132.490	1741.15	52.04	-51.87	53.41	40°01'00.439"N	104°53'48.777"W	0.87	
1841.00	12.500	132.410	1832.93	65.79	-65.57	68.39	40°01'00.304"N	104°53'48.584"W	0.07	
1936.00	12.600	126.830	1925.66	78.99	-78.71	84.27	40°01'00.174"N	104°53'48.380"W	1.28	
2032.00	10.940	123.140	2019.64	90.30	-89.97	100.28	40°01'00.063"N	104°53'48.174"W	1.90	
2123.00	10.760	123.040	2109.02	99.70	-99.32	114.64	40°00'59.970"N	104°53'47.990"W	0.20	
2214.00	10.840	121.230	2198.41	108.82	-108.39	129.07	40°00'59.881"N	104°53'47.804"W	0.38	
2306.00	10.610	121.740	2288.80	117.81	-117.33	143.67	40°00'59.793"N	104°53'47.616"W	0.27	
2397.00	10.060	122.050	2378.32	126.48	-125.95	157.54	40°00'59.707"N	104°53'47.438"W	0.61	
2488.00	9.870	122.650	2467.95	134.95	-134.38	170.84	40°00'59.624"N	104°53'47.267"W	0.24	
2577.00	9.070	122.790	2555.74	142.91	-142.29	183.16	40°00'59.546"N	104°53'47.109"W	0.90	
2668.00	9.500	120.020	2645.54	150.59	-149.94	195.69	40°00'59.470"N	104°53'46.948"W	0.68	
2760.00	7.170	123.270	2736.57	157.58	-156.89	207.07	40°00'59.402"N	104°53'46.802"W	2.58	
2852.00	6.460	126.210	2827.92	163.82	-163.09	216.04	40°00'59.340"N	104°53'46.686"W	0.86	
2942.00	4.080	121.370	2917.53	168.50	-167.75	222.86	40°00'59.294"N	104°53'46.599"W	2.69	
3033.00	3.730	117.720	3008.32	171.58	-170.81	228.25	40°00'59.264"N	104°53'46.529"W	0.47	
3125.00	3.330	117.990	3100.14	174.24	-173.46	233.26	40°00'59.238"N	104°53'46.465"W	0.44	
3217.00	2.910	118.190	3192.01	176.61	-175.82	237.67	40°00'59.215"N	104°53'46.408"W	0.46	
3308.00	2.400	129.290	3282.91	178.92	-178.11	241.18	40°00'59.192"N	104°53'46.363"W	0.79	
3400.00	2.070	145.590	3374.84	181.52	-180.70	243.61	40°00'59.166"N	104°53'46.332"W	0.77	
3492.00	1.510	142.350	3466.79	183.86	-183.03	245.29	40°00'59.143"N	104°53'46.310"W	0.62	
3583.00	1.050	151.590	3557.77	185.54	-184.72	246.42	40°00'59.127"N	104°53'46.296"W	0.55	
3768.00	0.900	227.420	3742.75	188.02	-187.19	246.16	40°00'59.102"N	104°53'46.299"W	0.65	
3861.00	0.960	268.860	3835.74	188.52	-187.70	244.84	40°00'59.097"N	104°53'46.316"W	0.71	
4049.00	1.850	123.540	4023.71	190.23	-189.41	245.80	40°00'59.080"N	104°53'46.304"W	1.43	
4236.00	1.190	99.910	4210.65	192.25	-191.41	250.23	40°00'59.060"N	104°53'46.247"W	0.48	
4424.00	0.060	239.100	4398.63	192.64	-191.80	252.06	40°00'59.057"N	104°53'46.223"W	0.66	

### REFERENCE WELLPATH IDENTIFICATION

Operator	KERR-MCGEE OIL & GAS ONSHORE LP	Slot	SLOT#11 D&C FARMS 36C-33HZ (767' FSL & 2186' FWL, SEC
Area	COLORADO	Well	D&C FARMS 36C-33HZ
Field	WELD COUNTY (KERR MCGEE)	Wellbore	D&C FARMS 36C-33HZ AWB
Facility	SEC.28-T1N-R67W		

### WELLPATH DATA (127 stations) † = interpolated/extrapolated station

MD [ft]	Inclination [°]	Azimuth [°]	TVD [ft]	Vert Sect [ft]	North [ft]	East [ft]	Latitude	Longitude	DLS [°/100ft]	Comments
4705.00	1.860	325.180	4679.59	188.96	-188.13	249.33	40°00'59.093"N	104°53'46.258"W	0.66	
4875.00	1.480	353.330	4849.52	184.51	-183.68	247.50	40°00'59.137"N	104°53'46.282"W	0.52	
5045.00	0.950	59.060	5019.48	181.61	-180.78	248.46	40°00'59.165"N	104°53'46.270"W	0.82	
5386.00	1.790	87.970	5360.39	179.99	-179.14	256.20	40°00'59.182"N	104°53'46.170"W	0.31	
5727.00	1.010	97.710	5701.28	180.24	-179.35	264.51	40°00'59.180"N	104°53'46.063"W	0.24	
6067.00	0.560	263.150	6041.27	180.84	-179.95	265.83	40°00'59.174"N	104°53'46.046"W	0.46	
6408.00	0.350	180.590	6382.26	182.08	-181.19	264.16	40°00'59.161"N	104°53'46.068"W	0.18	
6749.00	0.240	325.800	6723.26	182.53	-181.64	263.75	40°00'59.157"N	104°53'46.073"W	0.17	
7132.00	0.590	82.370	7106.25	181.61	-180.72	265.25	40°00'59.166"N	104°53'46.054"W	0.19	
7218.00	2.610	173.350	7192.22	183.49	-182.60	265.92	40°00'59.147"N	104°53'46.045"W	3.12	
7260.00	7.080	178.560	7234.06	187.03	-186.14	266.09	40°00'59.112"N	104°53'46.043"W	10.68	
7303.00	11.770	180.790	7276.47	194.07	-193.18	266.10	40°00'59.043"N	104°53'46.043"W	10.94	
7345.00	16.060	181.030	7317.23	204.17	-203.28	265.94	40°00'58.943"N	104°53'46.045"W	10.22	
7388.00	18.130	179.830	7358.33	216.81	-215.92	265.85	40°00'58.818"N	104°53'46.046"W	4.88	
7431.00	18.570	179.870	7399.14	230.34	-229.45	265.88	40°00'58.684"N	104°53'46.046"W	1.02	
7473.00	20.380	181.430	7438.73	244.34	-243.45	265.72	40°00'58.546"N	104°53'46.048"W	4.48	
7516.00	23.860	182.120	7478.56	260.52	-259.63	265.21	40°00'58.386"N	104°53'46.054"W	8.12	
7558.00	28.450	181.310	7516.25	279.02	-278.13	264.66	40°00'58.203"N	104°53'46.061"W	10.96	
7601.00	33.280	179.050	7553.15	301.07	-300.18	264.63	40°00'57.985"N	104°53'46.062"W	11.55	
7643.00	38.490	178.440	7587.17	325.67	-324.79	265.17	40°00'57.742"N	104°53'46.055"W	12.43	
7686.00	42.970	179.880	7619.75	353.72	-352.83	265.57	40°00'57.465"N	104°53'46.050"W	10.64	
7729.00	48.460	181.290	7649.76	384.49	-383.60	265.24	40°00'57.161"N	104°53'46.054"W	12.98	
7771.00	53.810	180.900	7676.11	417.17	-416.29	264.62	40°00'56.838"N	104°53'46.062"W	12.76	
7814.00	60.190	180.790	7699.51	453.21	-452.33	264.09	40°00'56.482"N	104°53'46.069"W	14.84	
7857.00	65.890	179.680	7719.00	491.52	-490.64	263.94	40°00'56.103"N	104°53'46.071"W	13.45	
7899.00	72.440	179.930	7733.93	530.75	-529.87	264.07	40°00'55.716"N	104°53'46.069"W	15.61	
7942.00	77.990	182.800	7744.90	572.29	-571.41	263.07	40°00'55.305"N	104°53'46.082"W	14.43	
7984.00	81.530	184.170	7752.37	613.53	-612.66	260.55	40°00'54.898"N	104°53'46.114"W	9.02	
8027.00	84.380	184.330	7757.64	656.07	-655.21	257.39	40°00'54.477"N	104°53'46.155"W	6.64	
8069.00	88.610	184.890	7760.21	697.83	-696.99	254.02	40°00'54.064"N	104°53'46.198"W	10.16	
8098.00	89.320	185.040	7760.73	726.71	-725.87	251.51	40°00'53.779"N	104°53'46.230"W	2.50	
8145.00†	89.854	185.368	7761.07	773.50	-772.68	247.25	40°00'53.316"N	104°53'46.285"W	1.33	7" CASING POINT
8171.00	90.150	185.550	7761.07	799.38	-798.56	244.77	40°00'53.060"N	104°53'46.317"W	1.33	
8214.00	89.840	185.270	7761.07	842.17	-841.37	240.72	40°00'52.637"N	104°53'46.369"W	0.97	
8299.00	89.530	185.340	7761.54	926.78	-926.00	232.86	40°00'51.801"N	104°53'46.470"W	0.37	
8384.00	88.350	184.340	7763.11	1011.43	-1010.68	225.69	40°00'50.964"N	104°53'46.562"W	1.82	
8470.00	89.100	184.090	7765.03	1097.16	-1096.43	219.37	40°00'50.117"N	104°53'46.644"W	0.92	
8555.00	88.670	181.480	7766.68	1182.02	-1181.30	215.24	40°00'49.278"N	104°53'46.697"W	3.11	
8640.00	88.390	180.240	7768.86	1266.98	-1266.27	213.97	40°00'48.438"N	104°53'46.713"W	1.50	
8726.00	87.470	180.850	7771.97	1352.91	-1352.20	213.15	40°00'47.589"N	104°53'46.724"W	1.28	
8811.00	87.290	180.170	7775.85	1437.82	-1437.11	212.39	40°00'46.750"N	104°53'46.733"W	0.83	
8896.00	87.780	178.790	7779.51	1522.73	-1522.03	213.17	40°00'45.911"N	104°53'46.723"W	1.72	
8981.00	87.070	178.430	7783.33	1607.63	-1606.92	215.23	40°00'45.072"N	104°53'46.697"W	0.94	
9066.00	86.820	179.270	7787.86	1692.49	-1691.78	216.93	40°00'44.233"N	104°53'46.675"W	1.03	
9151.00	87.210	178.920	7792.28	1777.37	-1776.65	218.27	40°00'43.395"N	104°53'46.658"W	0.62	

# Actual Wellpath Report

D&C FARMS 36C-33HZ AWP

Page 4 of 6

## REFERENCE WELLPATH IDENTIFICATION

Operator	KERR-MCGEE OIL & GAS ONSHORE LP	Slot	SLOT#11 D&C FARMS 36C-33HZ (767' FSL & 2186' FWL, SEC
Area	COLORADO	Well	D&C FARMS 36C-33HZ
Field	WELD COUNTY (KERR MCGEE)	Wellbore	D&C FARMS 36C-33HZ AWB
Facility	SEC.28-T1N-R67W		

## WELLPATH DATA (127 stations)

MD [ft]	Inclination [°]	Azimuth [°]	TVD [ft]	Vert Sect [ft]	North [ft]	East [ft]	Latitude	Longitude	DLS [°/100ft]	Comments
9236.00	88.610	179.170	7795.38	1862.31	-1861.58	219.68	40°00'42.555"N	104°53'46.640"W	1.67	
9322.00	90.800	178.630	7795.83	1948.29	-1947.56	221.34	40°00'41.706"N	104°53'46.618"W	2.62	
9407.00	90.640	178.390	7794.76	2033.26	-2032.52	223.55	40°00'40.866"N	104°53'46.590"W	0.34	
9492.00	90.800	179.220	7793.69	2118.24	-2117.50	225.32	40°00'40.026"N	104°53'46.567"W	0.99	
9578.00	90.240	178.410	7792.91	2204.22	-2203.47	227.10	40°00'39.177"N	104°53'46.544"W	1.15	
9662.00	90.330	178.670	7792.49	2288.20	-2287.44	229.24	40°00'38.347"N	104°53'46.517"W	0.33	
9832.00	90.090	178.680	7791.87	2458.17	-2457.40	233.17	40°00'36.667"N	104°53'46.466"W	0.14	
10003.00	88.860	178.510	7793.44	2629.12	-2628.34	237.36	40°00'34.978"N	104°53'46.413"W	0.73	
10088.00	89.440	178.300	7794.70	2714.08	-2713.29	239.73	40°00'34.138"N	104°53'46.382"W	0.73	
10259.00	88.830	178.490	7797.28	2885.01	-2884.21	244.52	40°00'32.449"N	104°53'46.321"W	0.37	
10344.00	88.730	178.090	7799.09	2969.96	-2969.15	247.05	40°00'31.610"N	104°53'46.288"W	0.48	
10600.00	87.590	177.410	7807.31	3225.66	-3224.81	257.10	40°00'29.083"N	104°53'46.159"W	0.52	
10685.00	87.900	177.850	7810.65	3310.53	-3309.67	260.61	40°00'28.245"N	104°53'46.114"W	0.63	
10770.00	88.920	177.740	7813.01	3395.44	-3394.58	263.88	40°00'27.406"N	104°53'46.072"W	1.21	
10855.00	89.560	178.360	7814.14	3480.39	-3479.52	266.77	40°00'26.566"N	104°53'46.035"W	1.05	
10940.00	89.720	177.610	7814.67	3565.35	-3564.47	269.76	40°00'25.727"N	104°53'45.996"W	0.90	
11026.00	91.200	179.270	7813.98	3651.32	-3650.43	272.10	40°00'24.877"N	104°53'45.966"W	2.59	
11110.00	91.440	178.470	7812.05	3735.28	-3734.39	273.75	40°00'24.048"N	104°53'45.945"W	0.99	
11195.00	91.720	178.230	7809.70	3820.22	-3819.32	276.20	40°00'23.208"N	104°53'45.914"W	0.43	
11280.00	91.040	177.820	7807.66	3905.16	-3904.24	279.13	40°00'22.369"N	104°53'45.876"W	0.93	
11366.00	90.700	178.620	7806.35	3991.11	-3990.19	281.80	40°00'21.520"N	104°53'45.842"W	1.01	
11451.00	90.760	179.390	7805.27	4076.10	-4075.17	283.28	40°00'20.680"N	104°53'45.823"W	0.91	
11536.00	90.520	180.410	7804.32	4161.09	-4160.16	283.43	40°00'19.840"N	104°53'45.821"W	1.23	
11621.00	92.040	180.390	7802.42	4246.06	-4245.14	282.83	40°00'19.000"N	104°53'45.828"W	1.79	
11707.00	91.780	180.100	7799.55	4332.01	-4331.09	282.46	40°00'18.151"N	104°53'45.833"W	0.45	
11792.00	91.320	179.990	7797.25	4416.98	-4416.06	282.40	40°00'17.311"N	104°53'45.834"W	0.56	
11962.00	90.800	178.710	7794.11	4586.94	-4586.01	284.33	40°00'15.632"N	104°53'45.809"W	0.81	
12047.00	90.860	179.380	7792.88	4671.92	-4670.99	285.74	40°00'14.792"N	104°53'45.791"W	0.79	
12218.00	88.330	179.730	7794.09	4842.90	-4841.97	287.07	40°00'13.102"N	104°53'45.774"W	1.49	
12303.00	88.700	180.200	7796.29	4927.87	-4926.94	287.12	40°00'12.262"N	104°53'45.773"W	0.70	
12388.00	89.720	180.050	7797.46	5012.86	-5011.93	286.94	40°00'11.423"N	104°53'45.776"W	1.21	
12473.00	89.900	180.160	7797.74	5097.86	-5096.93	286.78	40°00'10.583"N	104°53'45.778"W	0.25	
12559.00	89.250	179.130	7798.38	5183.86	-5182.92	287.31	40°00'09.733"N	104°53'45.771"W	1.42	
12644.00	90.740	180.270	7798.39	5268.85	-5267.92	287.76	40°00'08.893"N	104°53'45.765"W	2.21	
12729.00	90.770	180.460	7797.27	5353.84	-5352.91	287.22	40°00'08.053"N	104°53'45.772"W	0.23	
12899.00	89.750	179.840	7796.50	5523.83	-5522.90	286.77	40°00'06.373"N	104°53'45.778"W	0.70	LAST BHI MWD+IFR SURVEY
12952.00	89.750	179.840	7796.73	5576.83	-5575.90	286.92	40°00'05.849"N	104°53'45.776"W	0.00	PROJECTION TO BIT



### REFERENCE WELLPATH IDENTIFICATION

Operator	KERR-MCGEE OIL & GAS ONSHORE LP	Slot	SLOT#11 D&C FARMS 36C-33HZ (767' FSL & 2186' FWL, SEC
Area	COLORADO	Well	D&C FARMS 36C-33HZ
Field	WELD COUNTY (KERR MCGEE)	Wellbore	D&C FARMS 36C-33HZ AWB
Facility	SEC.28-T1N-R67W		

### HOLE & CASING SECTIONS - Ref Wellbore: D&C FARMS 36C-33HZ AWB Ref Wellpath: D&C FARMS 36C-33HZ AWP

String/Diameter	Start MD [ft]	End MD [ft]	Interval [ft]	Start TVD [ft]	End TVD [ft]	Start N/S [ft]	Start E/W [ft]	End N/S [ft]	End E/W [ft]
13.5in Open Hole	16.00	1053.00	1037.00	16.00	1053.00	0.00	0.00	0.53	-0.53
9.625in Casing Intermediate	16.00	1053.00	1037.00	16.00	1053.00	0.00	0.00	0.53	-0.53
8.75in Open Hole	1053.00	8155.00	7102.00	1053.00	7761.09	0.53	-0.53	-782.63	246.31
7in Casing Intermediate	16.00	8145.00	8129.00	16.00	7761.07	0.00	0.00	-772.68	247.25
6.125in Open Hole	8155.00	12952.00	4797.00	7761.09	7796.73	-782.63	246.31	-5575.90	286.92

### TARGETS

Name	MD [ft]	TVD [ft]	North [ft]	East [ft]	Grid East [US ft]	Grid North [US ft]	Latitude	Longitude	Shape
D&C FARMS PAD HARD LINES (460' SET BACKS SEC. 33)		7500.00	-31.77	-50.96	3168818.17	1249556.38	40°01'00.638"N	104°53'50.118"W	polygon
D&C FARMS PAD HARD LINES (460' SET BACKS, SEC. 28)		7500.00	-31.77	-50.96	3168818.17	1249556.38	40°01'00.638"N	104°53'50.118"W	polygon
D&C FARMS 14N-33HZ BHL ON PLAT (460' FSL & 2014' FWL, SEC. 33) PERMIT		7557.00	-5579.47	-151.52	3168755.34	1244008.33	40°00'05.814"N	104°53'51.410"W	point
D&C FARMS 36C-33HZ BHL ON PLAT REV-1 (460' FSL & 2450' FWL, SEC. 33)		7819.00	-5578.74	284.66	3169191.48	1244012.02	40°00'05.821"N	104°53'45.805"W	point
D&C FARMS 36C-33HZ LAND BOX		7900.00	0.00	0.00	3168868.91	1249588.49	40°01'00.952"N	104°53'49.463"W	polygon
D&C FARMS PAD SECTION LINES (SEC. 28)		7900.00	-31.77	-50.96	3168818.17	1249556.38	40°01'00.638"N	104°53'50.118"W	polygon
D&C FARMS PAD SECTION LINES (SEC. 33)		7900.00	-31.77	-50.96	3168818.17	1249556.38	40°01'00.638"N	104°53'50.118"W	polygon

### WELLPATH COMPOSITION - Ref Wellbore: D&C FARMS 36C-33HZ AWB Ref Wellpath: D&C FARMS 36C-33HZ AWP

Start MD [ft]	End MD [ft]	Positional Uncertainty Model	Log Name/Comment	Wellbore
16.00	971.00	Generic gyro - continuous (Standard)	MS GYRODATA SURVEYS <116-971>	D&C FARMS 36C-33HZ AWB
971.00	8098.00	NaviTrak (MAGCORR,IFR)	BHI MWD+IFR SURVEYS 8 3/4" HOLE <1089-8098>	D&C FARMS 36C-33HZ AWB
8098.00	12899.00	NaviTrak (MAGCORR,IFR)	BHI MWD+IFR SURVEYS 6 1/8" HOLE <8171-12899>	D&C FARMS 36C-33HZ AWB
12899.00	12952.00	Blind Drilling (std)	Projection to bit	D&C FARMS 36C-33HZ AWB



# Actual Wellpath Report

D&C FARMS 36C-33HZ AWP

Page 6 of 6



## REFERENCE WELLPATH IDENTIFICATION

Operator	KERR-MCGEE OIL & GAS ONSHORE LP	Slot	SLOT#11 D&C FARMS 36C-33HZ (767' FSL & 2186' FWL, SEC
Area	COLORADO	Well	D&C FARMS 36C-33HZ
Field	WELD COUNTY (KERR MCGEE)	Wellbore	D&C FARMS 36C-33HZ AWB
Facility	SEC.28-T1N-R67W		

## WELLPATH COMMENTS

MD [ft]	Inclination [°]	Azimuth [°]	TVD [ft]	Comment
16.00	0.000	224.910	16.00	TIE-ON
116.00	0.050	224.910	116.00	BEGIN GYRO SURVEYS
971.00	0.290	302.410	971.00	TIE ONTO GYRO SURVEYS
1089.00	0.460	30.550	1089.00	BEGIN BHI MWD+IFR SURVEYS
8145.00	89.854	185.368	7761.07	7" CASING POINT
12899.00	89.750	179.840	7796.50	LAST BHI MWD+IFR SURVEY
12952.00	89.750	179.840	7796.73	PROJECTION TO BIT