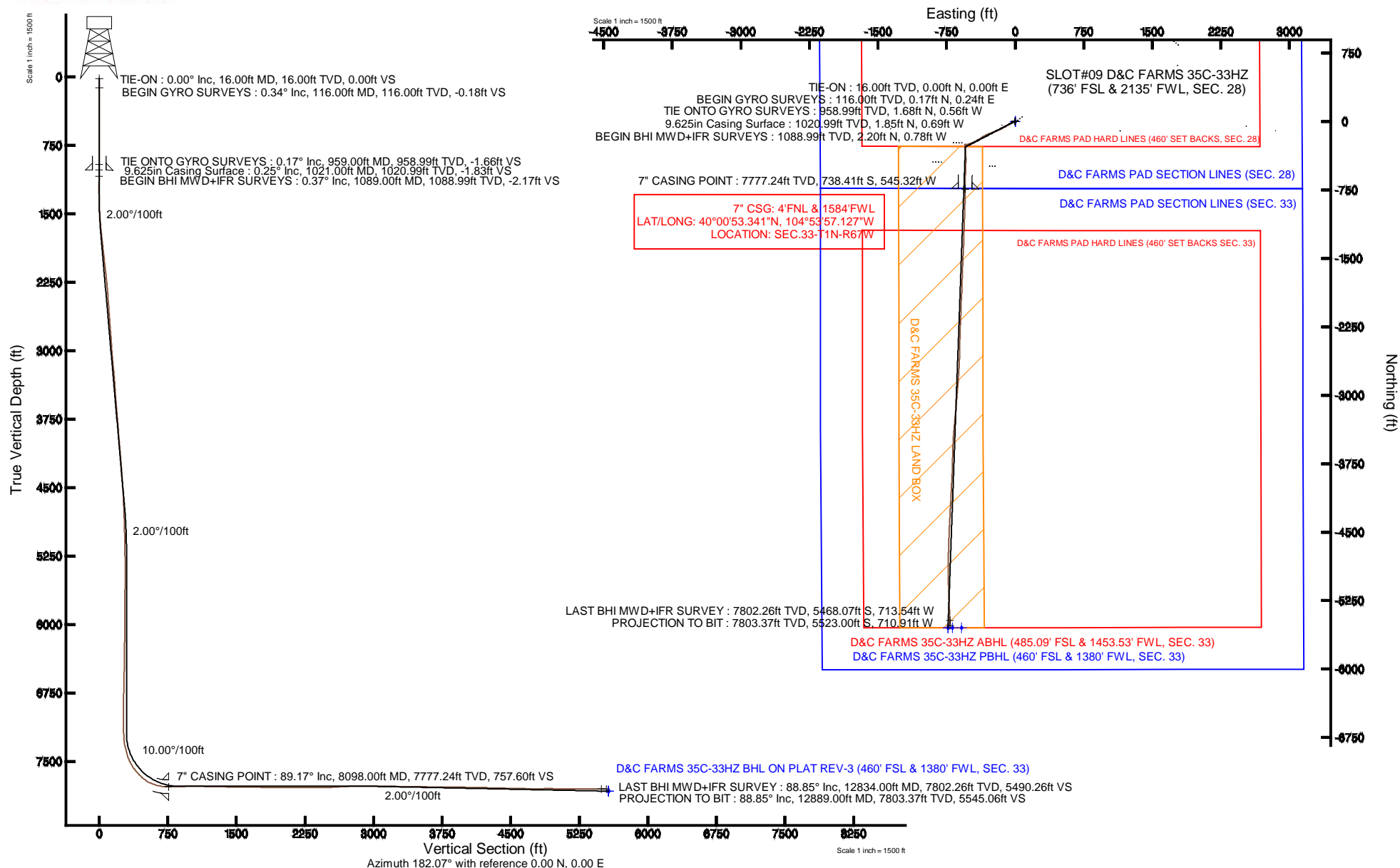


KERR-MCGEE OIL & GAS ONSHORE LP

Location: COLORADO Slot: SLOT#09 D&C FARMS 35C-33HZ (736' FSL & 2135' FWL, SEC. 28)
Field: WELD COUNTY (KERR MCGEE) Well: D&C FARMS 35C-33HZ
Facility: SEC.28-T1N-R67W Wellbore: D&C FARMS 35C-33HZ PWB

Plot reference wellpath is D&C FARMS 35C-33HZ (REV-C.0) PWP

True vertical depths are referenced to XTREME 24 (16' RKB) (RKB)	Grid System: NAD83 / Lambert Colorado SP, Northern Zone (501), US feet
Measured depths are referenced to XTREME 24 (16' RKB) (RKB)	North Reference: True north
XTREME 24 (16' RKB) (RKB) to Mean Sea Level: 5026 feet	Scale: True distance
Mean Sea Level to Mud line (At Slot: SLOT#09 D&C FARMS 35C-33HZ (736' FSL & 2135' FWL, SEC. 28)): 0 feet	Depths are in feet
Coordinates are in feet referenced to Slot	Created by: robale01 on 20Nov2013





Actual Wellpath Report

D&C FARMS 35C-33HZ AWP

Page 1 of 7



REFERENCE WELLPATH IDENTIFICATION

Operator	KERR-MCGEE OIL & GAS ONSHORE LP	Slot	SLOT#09 D&C FARMS 35C-33HZ (736' FSL & 2135' FWL, SEC
Area	COLORADO	Well	D&C FARMS 35C-33HZ
Field	WELD COUNTY (KERR MCGEE)	Wellbore	D&C FARMS 35C-33HZ AWB
Facility	SEC.28-T1N-R67W		

REPORT SETUP INFORMATION

Projection System	NAD83 / Lambert Colorado SP, Northern Zone (501), US feet	Software System	WellArchitect® 4.0.0
North Reference	True	User	Robiale01
Scale	0.999965	Report Generated	20/Nov/2013 at 13:20
Convergence at slot	n/a	Database/Source file	WellArchitectDB/D_C_FARMS_35C-33HZ_AWB.xml

WELLPATH LOCATION

	Local coordinates		Grid coordinates		Geographic coordinates	
	North[ft]	East[ft]	Easting[US ft]	Northing[US ft]	Latitude	Longitude
Slot Location	1412433.27	2715382.59	3168818.17	1249556.38	40°01'00.638"N	104°53'50.118"W
Facility Reference Pt			316923.76	121463.46	36°32'36.656"N	114°37'52.006"W
Field Reference Pt			3197771.84	1268891.29	40°04'09.600"N	104°47'36.000"W

WELLPATH DATUM

Calculation method	Minimum curvature	XTREME 24 (16' RKB) (RKB) to Facility Vertical Datum	5026.00ft
Horizontal Reference Pt	Slot	XTREME 24 (16' RKB) (RKB) to Mean Sea Level	5026.00ft
Vertical Reference Pt	XTREME 24 (16' RKB) (RKB)	XTREME 24 (16' RKB) (RKB) to Mud Line at Slot (SLOT#09 D&C FARMS 35C-33HZ (736' FSL & 2135' FWL, SEC. 28))	5026.00ft
MD Reference Pt	XTREME 24 (16' RKB) (RKB)	Section Origin	N 0.00, E 0.00 ft
Field Vertical Reference	Mean Sea Level	Section Azimuth	187.33°

Actual Wellpath Report

D&C FARMS 35C-33HZ AWP

Page 2 of 7

REFERENCE WELLPATH IDENTIFICATION

Operator	KERR-MCGEE OIL & GAS ONSHORE LP	Slot	SLOT#09 D&C FARMS 35C-33HZ (736' FSL & 2135' FWL, SEC
Area	COLORADO	Well	D&C FARMS 35C-33HZ
Field	WELD COUNTY (KERR MCGEE)	Wellbore	D&C FARMS 35C-33HZ AWB
Facility	SEC.28-T1N-R67W		

WELLPATH DATA (139 stations) † = interpolated/extrapolated station

MD [ft]	Inclination [°]	Azimuth [°]	TVD [ft]	Vert Sect [ft]	North [ft]	East [ft]	Latitude	Longitude	DLS [°/100ft]	Comments
0.00†	0.000	54.330	0.00	0.00	0.00	0.00	40°01'00.638"N	104°53'50.118"W	0.00	
16.00	0.000	54.330	16.00	0.00	0.00	0.00	40°01'00.638"N	104°53'50.118"W	0.00	TIE-ON
116.00	0.340	54.330	116.00	-0.20	0.17	0.24	40°01'00.640"N	104°53'50.115"W	0.34	BEGIN GYRO SURVEYS
216.00	0.090	112.310	216.00	-0.38	0.32	0.55	40°01'00.641"N	104°53'50.111"W	0.30	
316.00	0.140	71.010	316.00	-0.42	0.33	0.74	40°01'00.641"N	104°53'50.108"W	0.09	
416.00	0.050	295.380	416.00	-0.49	0.38	0.82	40°01'00.642"N	104°53'50.107"W	0.18	
516.00	0.190	352.030	516.00	-0.66	0.57	0.76	40°01'00.644"N	104°53'50.108"W	0.17	
616.00	0.310	303.390	616.00	-0.94	0.88	0.51	40°01'00.647"N	104°53'50.111"W	0.23	
716.00	0.260	339.030	716.00	-1.26	1.24	0.20	40°01'00.650"N	104°53'50.115"W	0.18	
816.00	0.280	286.120	816.00	-1.49	1.52	-0.12	40°01'00.653"N	104°53'50.119"W	0.24	
916.00	0.130	289.270	915.99	-1.55	1.63	-0.46	40°01'00.654"N	104°53'50.124"W	0.15	
959.00	0.170	305.300	958.99	-1.59	1.68	-0.56	40°01'00.655"N	104°53'50.125"W	0.13	TIE ONTO GYRO SURVEYS
1089.00	0.370	350.250	1088.99	-2.09	2.20	-0.78	40°01'00.660"N	104°53'50.128"W	0.21	BEGIN BHI MWD+IFR SURVEYS
1183.00	0.490	325.890	1182.99	-2.68	2.84	-1.06	40°01'00.666"N	104°53'50.132"W	0.23	
1277.00	1.950	254.280	1276.97	-2.35	2.74	-2.83	40°01'00.665"N	104°53'50.154"W	1.97	
1371.00	4.120	250.770	1370.83	-0.22	1.19	-7.55	40°01'00.650"N	104°53'50.215"W	2.32	
1465.00	6.260	249.090	1464.44	3.72	-1.75	-15.53	40°01'00.621"N	104°53'50.318"W	2.28	
1559.00	8.510	238.400	1557.66	10.52	-7.23	-26.24	40°01'00.567"N	104°53'50.455"W	2.79	
1653.00	10.920	242.520	1650.31	19.97	-14.98	-40.07	40°01'00.490"N	104°53'50.633"W	2.67	
1747.00	11.470	239.580	1742.52	30.78	-23.82	-56.03	40°01'00.403"N	104°53'50.838"W	0.84	
1842.00	11.470	239.320	1835.62	42.38	-33.42	-72.30	40°01'00.308"N	104°53'51.047"W	0.05	
1936.00	11.270	239.180	1927.78	53.81	-42.90	-88.22	40°01'00.214"N	104°53'51.252"W	0.21	
2031.00	11.180	237.170	2020.96	65.49	-52.65	-103.93	40°01'00.118"N	104°53'51.454"W	0.42	
2123.00	11.050	235.810	2111.23	77.08	-62.44	-118.72	40°01'00.021"N	104°53'51.644"W	0.32	
2215.00	11.890	242.630	2201.40	88.32	-71.75	-134.43	40°00'59.929"N	104°53'51.846"W	1.73	
2307.00	11.390	245.330	2291.51	98.54	-79.90	-151.10	40°00'59.848"N	104°53'52.060"W	0.80	
2399.00	10.890	247.800	2381.77	107.63	-86.97	-167.41	40°00'59.778"N	104°53'52.270"W	0.75	
2490.00	10.510	249.580	2471.19	115.74	-93.12	-183.14	40°00'59.718"N	104°53'52.472"W	0.55	
2582.00	9.590	246.990	2561.78	123.52	-99.04	-198.06	40°00'59.659"N	104°53'52.664"W	1.11	
2674.00	9.300	245.830	2652.53	131.27	-105.08	-211.90	40°00'59.600"N	104°53'52.841"W	0.38	
2766.00	9.510	245.920	2743.30	139.12	-111.22	-225.62	40°00'59.539"N	104°53'53.018"W	0.23	
2858.00	10.890	248.510	2833.84	147.27	-117.51	-240.64	40°00'59.477"N	104°53'53.211"W	1.58	
2950.00	9.840	251.650	2924.34	154.87	-123.17	-256.19	40°00'59.421"N	104°53'53.411"W	1.30	
3042.00	11.380	252.000	3014.76	162.16	-128.45	-272.29	40°00'59.369"N	104°53'53.618"W	1.68	
3134.00	12.140	243.520	3104.84	171.43	-135.57	-289.58	40°00'59.298"N	104°53'53.840"W	2.05	
3226.00	11.190	241.960	3194.94	181.98	-144.08	-306.12	40°00'59.214"N	104°53'54.052"W	1.09	
3318.00	9.760	242.870	3285.40	191.56	-151.83	-320.94	40°00'59.138"N	104°53'54.243"W	1.56	
3410.00	8.310	244.430	3376.26	199.58	-158.26	-333.87	40°00'59.074"N	104°53'54.409"W	1.60	
3502.00	7.340	244.450	3467.40	206.39	-163.66	-345.17	40°00'59.021"N	104°53'54.554"W	1.05	
3594.00	8.330	238.270	3558.54	213.78	-169.70	-356.14	40°00'58.961"N	104°53'54.695"W	1.41	
3686.00	9.230	236.300	3649.46	222.82	-177.30	-367.95	40°00'58.886"N	104°53'54.847"W	1.03	
3778.00	7.630	234.450	3740.47	231.82	-184.94	-379.06	40°00'58.810"N	104°53'54.990"W	1.76	
3871.00	6.210	232.660	3832.79	239.56	-191.59	-388.08	40°00'58.745"N	104°53'55.106"W	1.54	
3964.00	7.730	239.450	3925.10	246.94	-197.82	-397.47	40°00'58.683"N	104°53'55.227"W	1.86	
4058.00	9.070	240.300	4018.09	255.28	-204.70	-409.35	40°00'58.615"N	104°53'55.379"W	1.43	

REFERENCE WELLPATH IDENTIFICATION

Operator	KERR-MCGEE OIL & GAS ONSHORE LP	Slot	SLOT#09 D&C FARMS 35C-33HZ (736' FSL & 2135' FWL, SEC
Area	COLORADO	Well	D&C FARMS 35C-33HZ
Field	WELD COUNTY (KERR MCGEE)	Wellbore	D&C FARMS 35C-33HZ AWB
Facility	SEC.28-T1N-R67W		

WELLPATH DATA (139 stations)

MD [ft]	Inclination [°]	Azimuth [°]	TVD [ft]	Vert Sect [ft]	North [ft]	East [ft]	Latitude	Longitude	DLS [°/100ft]	Comments
4151.00	9.490	239.860	4109.87	264.36	-212.18	-422.35	40°00'58.541"N	104°53'55.546"W	0.46	
4245.00	10.450	243.530	4202.45	273.82	-219.87	-436.68	40°00'58.465"N	104°53'55.731"W	1.22	
4340.00	9.200	244.990	4296.06	282.68	-226.92	-451.28	40°00'58.395"N	104°53'55.918"W	1.34	
4433.00	9.350	248.140	4387.84	290.34	-232.88	-465.02	40°00'58.337"N	104°53'56.095"W	0.57	
4526.00	9.510	247.400	4479.58	297.86	-238.65	-479.13	40°00'58.280"N	104°53'56.276"W	0.22	
4620.00	8.640	251.140	4572.41	304.85	-243.91	-492.98	40°00'58.228"N	104°53'56.454"W	1.12	
4714.00	7.560	254.300	4665.47	310.39	-247.87	-505.61	40°00'58.188"N	104°53'56.616"W	1.24	
4799.00	5.730	250.670	4749.89	314.48	-250.79	-515.00	40°00'58.160"N	104°53'56.737"W	2.21	
4884.00	5.160	250.700	4834.51	318.10	-253.45	-522.61	40°00'58.133"N	104°53'56.835"W	0.67	
4969.00	4.890	253.300	4919.18	321.29	-255.76	-529.69	40°00'58.110"N	104°53'56.926"W	0.42	
5054.00	3.990	247.380	5003.93	324.24	-257.94	-535.89	40°00'58.089"N	104°53'57.006"W	1.19	
5140.00	2.660	245.240	5089.78	326.79	-259.92	-540.47	40°00'58.069"N	104°53'57.064"W	1.55	
5225.00	0.960	178.840	5174.74	328.55	-261.46	-542.24	40°00'58.054"N	104°53'57.087"W	2.87	
5310.00	1.060	143.880	5259.73	329.82	-262.81	-541.76	40°00'58.041"N	104°53'57.081"W	0.72	
5481.00	1.110	93.210	5430.70	330.85	-264.18	-539.18	40°00'58.027"N	104°53'57.048"W	0.54	
5651.00	1.070	41.590	5600.68	329.42	-263.08	-536.48	40°00'58.038"N	104°53'57.013"W	0.56	
5822.00	0.940	41.400	5771.65	326.94	-260.84	-534.49	40°00'58.060"N	104°53'56.988"W	0.08	
6077.00	0.260	305.150	6026.64	324.94	-258.94	-533.58	40°00'58.079"N	104°53'56.976"W	0.39	
6418.00	1.310	314.570	6367.60	322.22	-255.75	-536.99	40°00'58.111"N	104°53'57.020"W	0.31	
6674.00	2.210	316.870	6623.48	317.30	-250.10	-542.45	40°00'58.166"N	104°53'57.090"W	0.35	
6758.00	2.280	297.990	6707.41	315.68	-248.13	-545.03	40°00'58.186"N	104°53'57.123"W	0.88	
6843.00	1.020	265.380	6792.38	315.24	-247.40	-547.28	40°00'58.193"N	104°53'57.152"W	1.79	
6928.00	0.560	279.200	6877.37	315.39	-247.39	-548.45	40°00'58.193"N	104°53'57.167"W	0.58	
7014.00	0.290	301.750	6963.37	315.28	-247.21	-549.05	40°00'58.195"N	104°53'57.175"W	0.36	
7099.00	0.320	19.260	7048.37	314.96	-246.87	-549.15	40°00'58.198"N	104°53'57.176"W	0.45	
7184.00	0.520	70.690	7133.37	314.56	-246.52	-548.71	40°00'58.202"N	104°53'57.170"W	0.48	
7270.00	2.740	146.450	7219.33	315.94	-248.11	-547.20	40°00'58.186"N	104°53'57.151"W	3.09	
7312.00	5.400	169.280	7261.22	318.57	-250.89	-546.28	40°00'58.159"N	104°53'57.139"W	7.30	
7355.00	8.930	179.730	7303.88	323.81	-256.21	-545.89	40°00'58.106"N	104°53'57.134"W	8.72	
7397.00	12.190	178.900	7345.17	331.43	-263.91	-545.79	40°00'58.030"N	104°53'57.133"W	7.77	
7440.00	13.960	177.030	7387.05	341.02	-273.63	-545.43	40°00'57.934"N	104°53'57.128"W	4.23	
7483.00	18.470	175.580	7428.33	352.80	-285.61	-544.64	40°00'57.815"N	104°53'57.118"W	10.53	
7525.00	22.150	175.870	7467.71	367.08	-300.14	-543.55	40°00'57.672"N	104°53'57.104"W	8.77	
7568.00	26.580	176.450	7506.87	384.48	-317.84	-542.37	40°00'57.497"N	104°53'57.089"W	10.32	
7611.00	30.460	176.540	7544.65	404.64	-338.33	-541.12	40°00'57.295"N	104°53'57.073"W	9.02	
7653.00	35.740	178.110	7579.82	427.22	-361.23	-540.07	40°00'57.068"N	104°53'57.059"W	12.74	
7696.00	40.080	178.750	7613.74	453.32	-387.63	-539.36	40°00'56.807"N	104°53'57.050"W	10.13	
7738.00	44.530	179.610	7644.79	481.29	-415.89	-538.96	40°00'56.528"N	104°53'57.045"W	10.68	
7781.00	48.050	182.000	7674.50	512.17	-446.96	-539.42	40°00'56.221"N	104°53'57.051"W	9.12	
7823.00	53.130	182.800	7701.16	544.49	-479.37	-540.78	40°00'55.901"N	104°53'57.068"W	12.18	
7866.00	60.020	182.130	7724.83	580.22	-515.20	-542.32	40°00'55.547"N	104°53'57.088"W	16.08	
7909.00	67.450	181.390	7743.84	618.57	-553.72	-543.49	40°00'55.166"N	104°53'57.103"W	17.35	
7951.00	73.460	181.280	7757.89	657.92	-593.27	-544.41	40°00'54.775"N	104°53'57.115"W	14.31	
7994.00	78.370	179.610	7768.35	699.31	-634.96	-544.73	40°00'54.363"N	104°53'57.119"W	12.02	
8052.00	87.030	180.520	7775.71	756.32	-692.44	-544.80	40°00'53.795"N	104°53'57.120"W	15.01	

Actual Wellpath Report

D&C FARMS 35C-33HZ AWP

Page 4 of 7

REFERENCE WELLPATH IDENTIFICATION

Operator	KERR-MCGEE OIL & GAS ONSHORE LP	Slot	SLOT#09 D&C FARMS 35C-33HZ (736' FSL & 2135' FWL, SEC
Area	COLORADO	Well	D&C FARMS 35C-33HZ
Field	WELD COUNTY (KERR MCGEE)	Wellbore	D&C FARMS 35C-33HZ AWB
Facility	SEC.28-T1N-R67W		

WELLPATH DATA (139 stations) † = interpolated/extrapolated station

MD [ft]	Inclination [°]	Azimuth [°]	TVD [ft]	Vert Sect [ft]	North [ft]	East [ft]	Latitude	Longitude	DLS [°/100ft]	Comments
8098.00†	89.166	180.763	7777.24	801.98	-738.41	-545.32	40°00'53.341"N	104°53'57.127"W	4.67	7" CASING POINT
8139.00	91.070	180.980	7777.16	842.72	-779.40	-545.94	40°00'52.936"N	104°53'57.135"W	4.67	
8224.00	91.450	181.910	7775.29	927.25	-864.35	-548.08	40°00'52.096"N	104°53'57.162"W	1.18	
8309.00	90.520	181.520	7773.83	1011.83	-949.30	-550.63	40°00'51.257"N	104°53'57.195"W	1.19	
8395.00	89.900	182.040	7773.51	1097.42	-1035.26	-553.30	40°00'50.407"N	104°53'57.229"W	0.94	
8480.00	89.350	181.900	7774.07	1182.05	-1120.20	-556.22	40°00'49.568"N	104°53'57.267"W	0.67	
8650.00	88.450	181.660	7777.33	1351.22	-1290.09	-561.50	40°00'47.889"N	104°53'57.334"W	0.55	
8736.00	88.700	182.530	7779.47	1436.83	-1376.00	-564.64	40°00'47.040"N	104°53'57.375"W	1.05	
8821.00	90.090	182.790	7780.37	1521.54	-1460.90	-568.59	40°00'46.201"N	104°53'57.425"W	1.66	
8906.00	90.000	182.780	7780.30	1606.27	-1545.80	-572.72	40°00'45.362"N	104°53'57.479"W	0.11	
9076.00	88.150	181.530	7783.04	1775.54	-1715.65	-579.11	40°00'43.683"N	104°53'57.561"W	1.31	
9161.00	88.500	181.290	7785.53	1860.05	-1800.59	-581.20	40°00'42.844"N	104°53'57.587"W	0.50	
9246.00	90.090	183.450	7786.57	1944.72	-1885.50	-584.71	40°00'42.005"N	104°53'57.633"W	3.16	
9417.00	89.780	181.590	7786.77	2115.11	-2056.33	-592.23	40°00'40.317"N	104°53'57.729"W	1.10	
9588.00	89.930	182.930	7787.20	2285.43	-2227.19	-598.97	40°00'38.628"N	104°53'57.816"W	0.79	
9757.00	90.120	180.820	7787.13	2453.66	-2396.09	-604.50	40°00'36.959"N	104°53'57.887"W	1.25	
9928.00	93.610	181.610	7781.56	2623.57	-2566.93	-608.13	40°00'35.271"N	104°53'57.933"W	2.09	
10013.00	93.200	182.540	7776.52	2708.06	-2651.73	-611.20	40°00'34.433"N	104°53'57.973"W	1.19	
10098.00	91.980	183.520	7772.67	2792.73	-2736.52	-615.69	40°00'33.595"N	104°53'58.030"W	1.84	
10184.00	90.300	184.100	7770.96	2878.55	-2822.31	-621.40	40°00'32.747"N	104°53'58.104"W	2.07	
10269.00	90.090	184.770	7770.67	2963.44	-2907.05	-627.97	40°00'31.910"N	104°53'58.188"W	0.83	
10354.00	89.230	184.850	7771.18	3048.35	-2991.75	-635.10	40°00'31.073"N	104°53'58.280"W	1.02	
10439.00	89.530	184.770	7772.10	3133.26	-3076.45	-642.23	40°00'30.236"N	104°53'58.371"W	0.37	
10610.00	88.660	185.310	7774.80	3304.10	-3246.76	-657.25	40°00'28.552"N	104°53'58.564"W	0.60	
10695.00	89.930	184.860	7775.84	3389.03	-3331.42	-664.78	40°00'27.716"N	104°53'58.661"W	1.59	
10780.00	89.590	184.690	7776.20	3473.94	-3416.12	-671.86	40°00'26.879"N	104°53'58.752"W	0.45	
10865.00	88.490	182.630	7777.62	3558.75	-3500.93	-677.28	40°00'26.041"N	104°53'58.822"W	2.75	
10950.00	88.900	182.380	7779.56	3643.43	-3585.83	-681.00	40°00'25.202"N	104°53'58.869"W	0.56	
11036.00	90.570	181.710	7779.96	3729.06	-3671.77	-684.06	40°00'24.352"N	104°53'58.909"W	2.09	
11120.00	89.500	180.940	7779.91	3812.59	-3755.75	-686.01	40°00'23.523"N	104°53'58.934"W	1.57	
11205.00	88.190	181.900	7781.62	3897.12	-3840.70	-688.11	40°00'22.683"N	104°53'58.961"W	1.91	
11290.00	89.470	182.960	7783.36	3981.79	-3925.60	-691.72	40°00'21.844"N	104°53'59.007"W	1.96	
11376.00	88.450	183.220	7784.92	4067.54	-4011.46	-696.35	40°00'20.995"N	104°53'59.067"W	1.22	
11461.00	88.700	182.870	7787.03	4152.27	-4096.32	-700.86	40°00'20.157"N	104°53'59.125"W	0.51	
11546.00	89.160	183.180	7788.62	4237.02	-4181.18	-705.35	40°00'19.318"N	104°53'59.182"W	0.65	
11631.00	88.610	183.340	7790.27	4321.79	-4266.03	-710.18	40°00'18.480"N	104°53'59.244"W	0.67	
11717.00	88.640	183.330	7792.34	4407.55	-4351.86	-715.18	40°00'17.632"N	104°53'59.308"W	0.04	
11802.00	87.960	182.150	7794.86	4492.24	-4436.72	-719.24	40°00'16.793"N	104°53'59.361"W	1.60	
11887.00	89.010	182.270	7797.10	4576.87	-4521.63	-722.52	40°00'15.954"N	104°53'59.403"W	1.24	
11972.00	88.940	182.140	7798.63	4661.51	-4606.55	-725.79	40°00'15.115"N	104°53'59.445"W	0.17	
12058.00	89.720	181.250	7799.63	4747.09	-4692.51	-728.33	40°00'14.265"N	104°53'59.477"W	1.38	
12143.00	90.270	180.730	7799.64	4831.57	-4777.49	-729.80	40°00'13.425"N	104°53'59.496"W	0.89	
12228.00	90.790	181.180	7798.85	4916.04	-4862.48	-731.22	40°00'12.585"N	104°53'59.514"W	0.81	
12313.00	88.760	179.250	7799.19	5000.37	-4947.47	-731.54	40°00'11.746"N	104°53'59.518"W	3.30	
12484.00	89.220	178.580	7802.20	5169.50	-5118.41	-728.30	40°00'10.056"N	104°53'59.477"W	0.48	

Actual Wellpath Report

D&C FARMS 35C-33HZ AWP

Page 5 of 7

REFERENCE WELLPATH IDENTIFICATION

Operator	KERR-MCGEE OIL & GAS ONSHORE LP	Slot	SLOT#09 D&C FARMS 35C-33HZ (736' FSL & 2135' FWL, SEC
Area	COLORADO	Well	D&C FARMS 35C-33HZ
Field	WELD COUNTY (KERR MCGEE)	Wellbore	D&C FARMS 35C-33HZ AWB
Facility	SEC.28-T1N-R67W		

WELLPATH DATA (139 stations)

MD [ft]	Inclination [°]	Azimuth [°]	TVD [ft]	Vert Sect [ft]	North [ft]	East [ft]	Latitude	Longitude	DLS [°/100ft]	Comments
12654.00	90.270	176.940	7802.96	5337.13	-5288.27	-721.66	40°00'08.378"N	104°53'59.391"W	1.15	
12739.00	90.920	177.720	7802.07	5420.83	-5373.17	-717.70	40°00'07.539"N	104°53'59.340"W	1.19	
12834.00	88.850	177.260	7802.26	5514.42	-5468.07	-713.54	40°00'06.601"N	104°53'59.287"W	2.23	LAST BHI MWD+IFR SURVEY
12889.00	88.850	177.260	7803.37	5568.56	-5523.00	-710.91	40°00'06.058"N	104°53'59.253"W	0.00	PROJECTION TO BIT

HOLE & CASING SECTIONS - Ref Wellbore: D&C FARMS 35C-33HZ AWB Ref Wellpath: D&C FARMS 35C-33HZ AWP

String/Diameter	Start MD [ft]	End MD [ft]	Interval [ft]	Start TVD [ft]	End TVD [ft]	Start N/S [ft]	Start E/W [ft]	End N/S [ft]	End E/W [ft]
13.5in Open Hole	16.00	1021.00	1005.00	16.00	1020.99	0.00	0.00	1.85	-0.69
9.625in Casing Surface	16.00	1021.00	1005.00	16.00	1020.99	0.00	0.00	1.85	-0.69
8.75in Open Hole	1021.00	8109.00	7088.00	1020.99	7777.35	1.85	-0.69	-749.40	-545.47
7in Casing Intermediate	16.00	8098.00	8082.00	16.00	7777.24	0.00	0.00	-738.41	-545.32
6.125in Open Hole	8109.00	12889.00	4780.00	7777.35	7803.37	-749.40	-545.47	-5523.00	-710.91

REFERENCE WELLPATH IDENTIFICATION

Operator	KERR-MCGEE OIL & GAS ONSHORE LP	Slot	SLOT#09 D&C FARMS 35C-33HZ (736' FSL & 2135' FWL, SEC
Area	COLORADO	Well	D&C FARMS 35C-33HZ
Field	WELD COUNTY (KERR MCGEE)	Wellbore	D&C FARMS 35C-33HZ AWB
Facility	SEC.28-T1N-R67W		

TARGETS

Name	MD [ft]	TVD [ft]	North [ft]	East [ft]	Grid East [US ft]	Grid North [US ft]	Latitude	Longitude	Shape
D&C FARMS PAD HARD LINES (460' SET BACKS SEC. 33)		7500.00	0.00	0.00	3168818.17	1249556.38	40°01'00.638"N	104°53'50.118"W	polygon
D&C FARMS PAD HARD LINES (460' SET BACKS, SEC. 28)		7500.00	0.00	0.00	3168818.17	1249556.38	40°01'00.638"N	104°53'50.118"W	polygon
D&C FARMS 35N-33HZ BHL ON PLAT (460' FSL & 1385' FWL, SEC. 33) PERMIT		7568.00	-5548.39	-729.50	3168126.43	1244003.36	40°00'05.807"N	104°53'59.492"W	point
D&C FARMS 35C-33HZ BHL ON PLAT REV-1 (460' FSL & 1530' FWL, SEC. 33)		7827.00	-5548.09	-584.44	3168271.48	1244004.64	40°00'05.810"N	104°53'57.628"W	point
D&C FARMS 35C-33HZ BHL ON PLAT REV-2 (460' FSL & 1430' FWL, SEC. 33)		7827.00	-5548.09	-684.44	3168171.48	1244003.96	40°00'05.810"N	104°53'58.913"W	point
D&C FARMS 35C-33HZ BHL ON PLAT REV-3 (460' FSL & 1380' FWL, SEC. 33)		7827.00	-5548.09	-734.44	3168121.48	1244003.62	40°00'05.810"N	104°53'59.555"W	point
D&C FARMS 35C-33HZ LAND BOX		7900.00	0.00	0.00	3168818.17	1249556.38	40°01'00.638"N	104°53'50.118"W	polygon
D&C FARMS PAD SECTION LINES (SEC. 28)		7900.00	0.00	0.00	3168818.17	1249556.38	40°01'00.638"N	104°53'50.118"W	polygon
D&C FARMS PAD SECTION LINES (SEC. 33)		7900.00	0.00	0.00	3168818.17	1249556.38	40°01'00.638"N	104°53'50.118"W	polygon

WELLPATH COMPOSITION - Ref Wellbore: D&C FARMS 35C-33HZ AWB Ref Wellpath: D&C FARMS 35C-33HZ AWP

Start MD [ft]	End MD [ft]	Positional Uncertainty Model	Log Name/Comment	Wellbore
16.00	959.00	Generic gyro - continuous (Standard)	MS GYRODATA SURVEYS <116-959>	D&C FARMS 35C-33HZ AWB
959.00	8052.00	NaviTrak (MAGCORR,IFR)	BHI NAVITRAK MWD+IFR 8 3/4" HOLE <1089-8052>	D&C FARMS 35C-33HZ AWB
8052.00	12834.00	OnTrak (MAGCORR,IFR)	BHI ONTRAK MWD+IFR 6 1/8" HOLE <8139-12834>	D&C FARMS 35C-33HZ AWB
12834.00	12889.00	Blind Drilling (std)	Projection to bit	D&C FARMS 35C-33HZ AWB

REFERENCE WELLPATH IDENTIFICATION

Operator	KERR-MCGEE OIL & GAS ONSHORE LP	Slot	SLOT#09 D&C FARMS 35C-33HZ (736' FSL & 2135' FWL, SEC
Area	COLORADO	Well	D&C FARMS 35C-33HZ
Field	WELD COUNTY (KERR MCGEE)	Wellbore	D&C FARMS 35C-33HZ AWB
Facility	SEC.28-T1N-R67W		

WELLPATH COMMENTS

MD [ft]	Inclination [°]	Azimuth [°]	TVD [ft]	Comment
16.00	0.000	54.330	16.00	TIE-ON
116.00	0.340	54.330	116.00	BEGIN GYRO SURVEYS
959.00	0.170	305.300	958.99	TIE ONTO GYRO SURVEYS
1089.00	0.370	350.250	1088.99	BEGIN BHI MWD+IFR SURVEYS
8098.00	89.166	180.763	7777.24	7" CASING POINT
12834.00	88.850	177.260	7802.26	LAST BHI MWD+IFR SURVEY
12889.00	88.850	177.260	7803.37	PROJECTION TO BIT