



Scale 1:240 (5"=100') Imperial
Measured Depth Log

Well Name: D&C Farms 35C-33HZ
 Location: Weld County, CO.
 License Number: 05123378920000
 Spud Date: 10/08/13
 Surface Coordinates: 736' FSL & 2135' FWL, SEC. 28, T1N-R67W
 Region: Weld County
 Drilling Completed: 10/13/13
 Bottom Hole Coordinates: 460' FSL & 1530' FWL, SEC. 33, T1N-R67W
 Ground Elevation (ft): 5011' K.B. Elevation (ft): 5027'
 Logged Interval (ft): 7000' To: 8109' Total Depth (ft): 12889'
 Formation: Codell
 Type of Drilling Fluid: Water Based Mud

Printed by MUD.LOG from WellSight Systems 1-800-447-1534 www.WellSight.com

OPERATOR

Company: Anadarko Petroleum Corporation
 Address: Granite Tower
 1099 18th Street, #1800
 Denver, CO 80202

GEOLOGIST

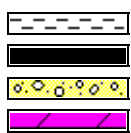
Name: Scott Crozier / Ben Thompson
 Company: Great Divide Consulting, Inc
 Address: P.O. Box 630263
 Highlands Ranch, CO 80163

Comments

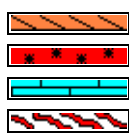
ROCK TYPES



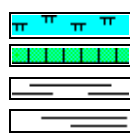
Anhy
Bent
Brec
Cht



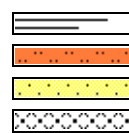
Clyst
Coal
Congl
Dol



Gyp
Igne
Lmst
Meta



Mrlst
Salt
Shale
Shcol



Shgy
Sltst
Ss
Till

ACCESSORIES

MINERAL

	Anhy
	Arggrn
	Arg
	Bent
	Bit
	Brecfrag
	Calc
	Carb
	Chtdk
	Chtlit
	Dol
	Feldspar
	Ferrpel
	Ferr
	Glau































Gyp
Hvymin
Kaol
Marl
Minxl
Nodule
Phos
Pyr
Salt
Sandy
Silt
Sil
Sulphur
Tuff









FOSSIL

-  **Algae**
-  **Amph**
-  **Belm**
-  **Bioclst**
-  **Brach**
-  **Bryozoa**
-  **Cephal**
-  **Coral**
-  **Crin**
-  **Echin**
-  **Fish**
-  **Foram**
-  **Fossil**
-  **Gastro**
-  **Oolite**

III

Ostra
Pelec
Pellet
Pisolite
Plant
Strom

STRINGER

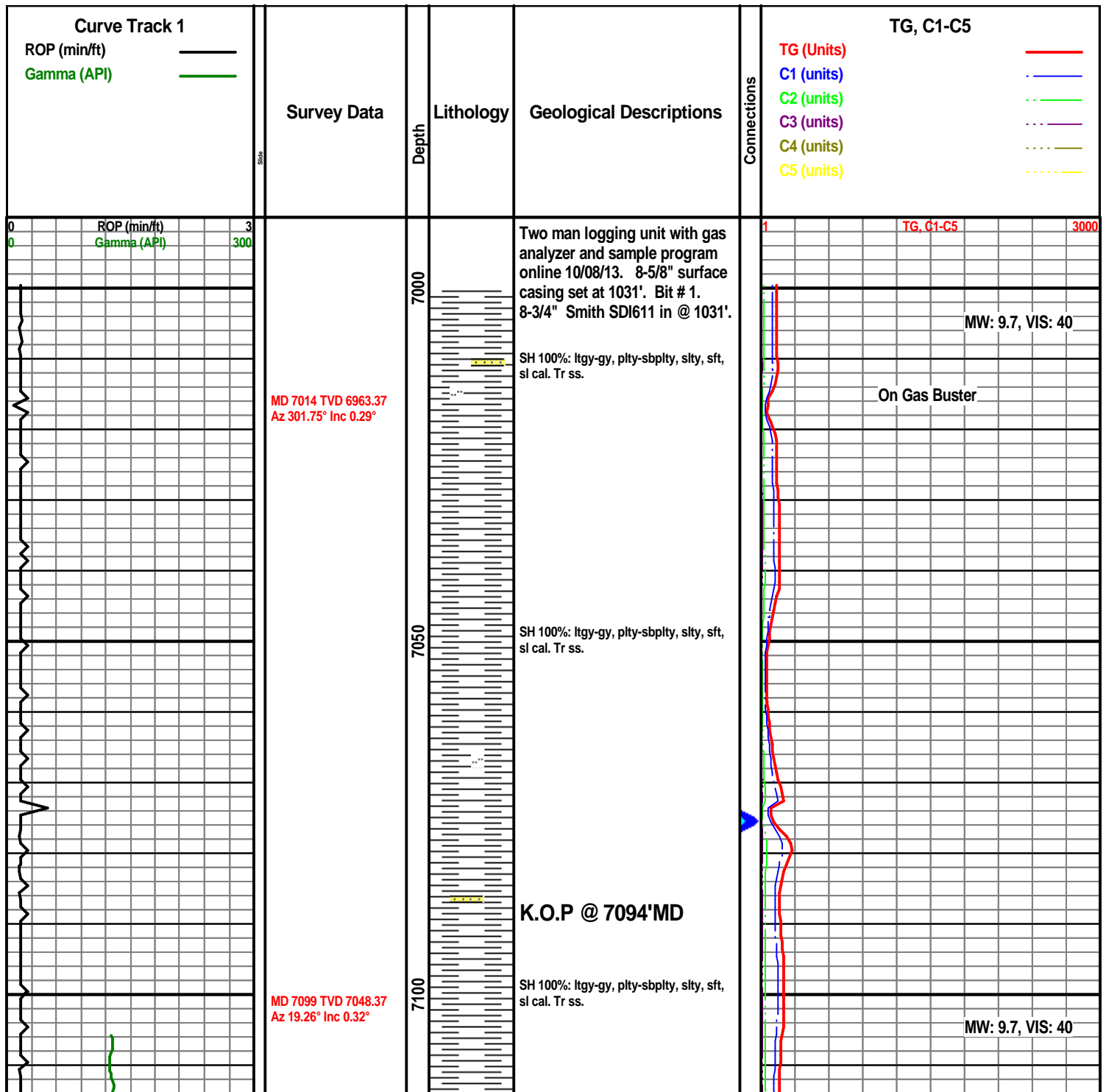
 Anhy
 Arg
 Bent
 Coal
 Dol
 Gyp
 Ls
 Mrst

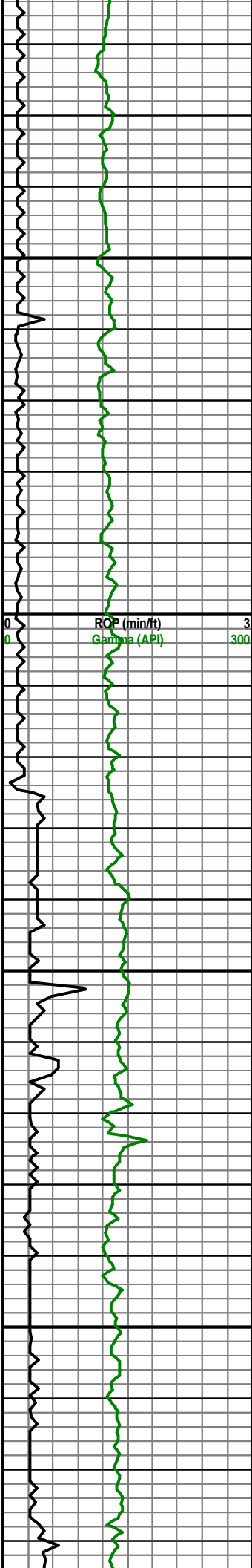


Sltstrg
Ssstrg

TEXTURE

BS	Boundst
C	Chalky
CX	CryxIn
E	Earthy
FX	FinexIn
GS	Grainst
L	Lithogr
MX	MicroxIn
MS	Mudst
PS	Packst
WS	Wackest

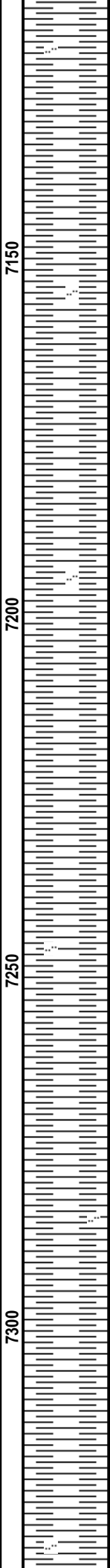




MD 7184 TVD 7133.37
Az 70.69° Inc 0.52°

MD 7270 TVD 7219.33
Az 146.45° Inc 2.74°

MD 7312 TVD 7261.23
Az 169.28° Inc 5.4°

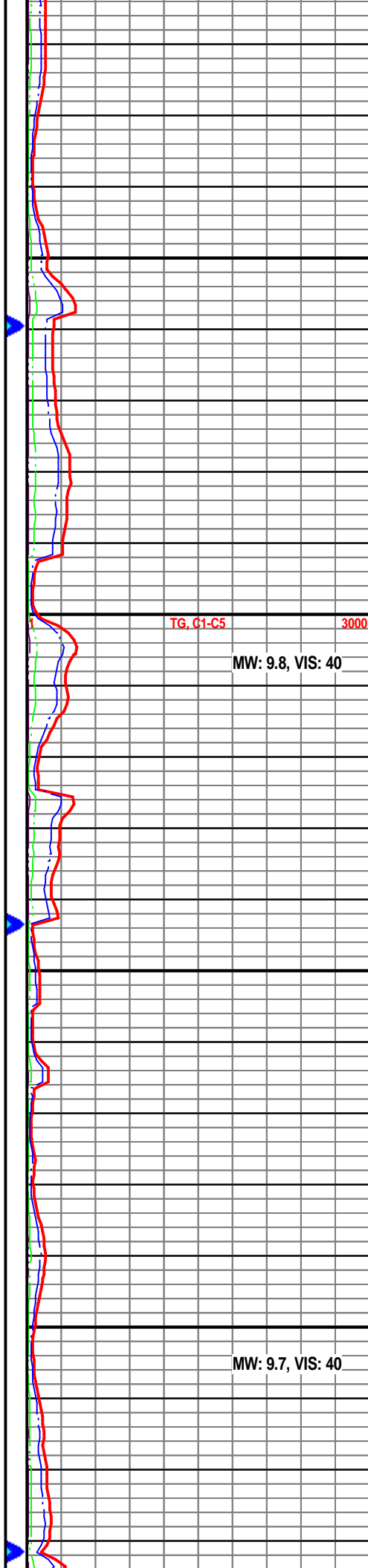


SH 100%: ltgy-gy, plty-sbplty, slty, sft,
sl cal. Tr ss.

SH 100%: ltgy-gy, plty-sbplty, slty, sft,
sl cal.

SH 100%: ltgy-gy, plty-sbplty, slty, sft,
sl cal.

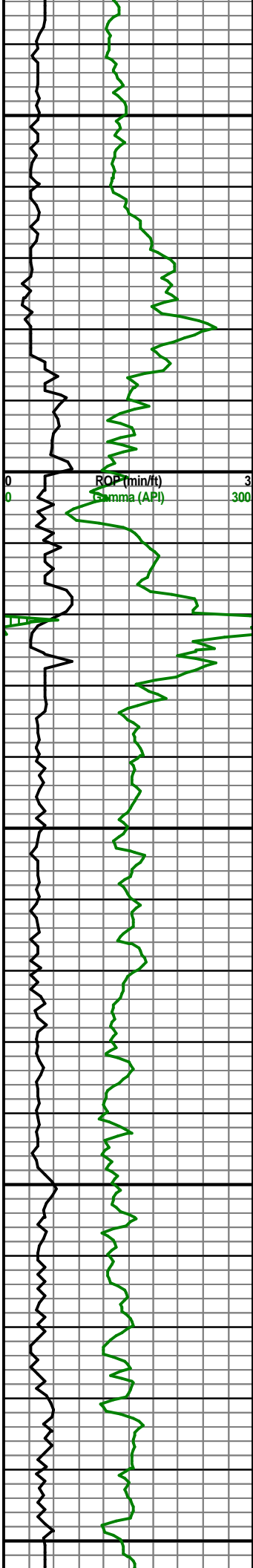
SH 100%: ltgy-gy, plty-sbplty, slty, sft,
sl cal.



TG, C1-C5 3000

MW: 9.8, VIS: 40

MW: 9.7, VIS: 40



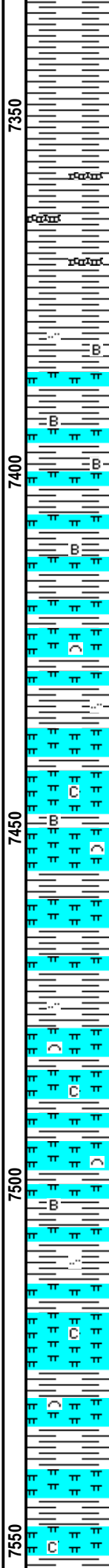
MD 7355 TVD 7303.89
Az 179.73° Inc 8.93°

MD 7397 TVD 7345.17
Az 178.9° Inc 12.19°

MD 7440 TVD 7387.05
Az 177.03° Inc 13.96°

MD 7483 TVD 7428.33
Az 175.58° Inc 18.47°

MD 7525 TVD 7467.71
Az 175.87° Inc 22.15°



SH 100%: ltgy-gy, plty-sbplty, slty, sft, sl cal.

Sharon Spgs Top @
7366' MD / 7315' TVD

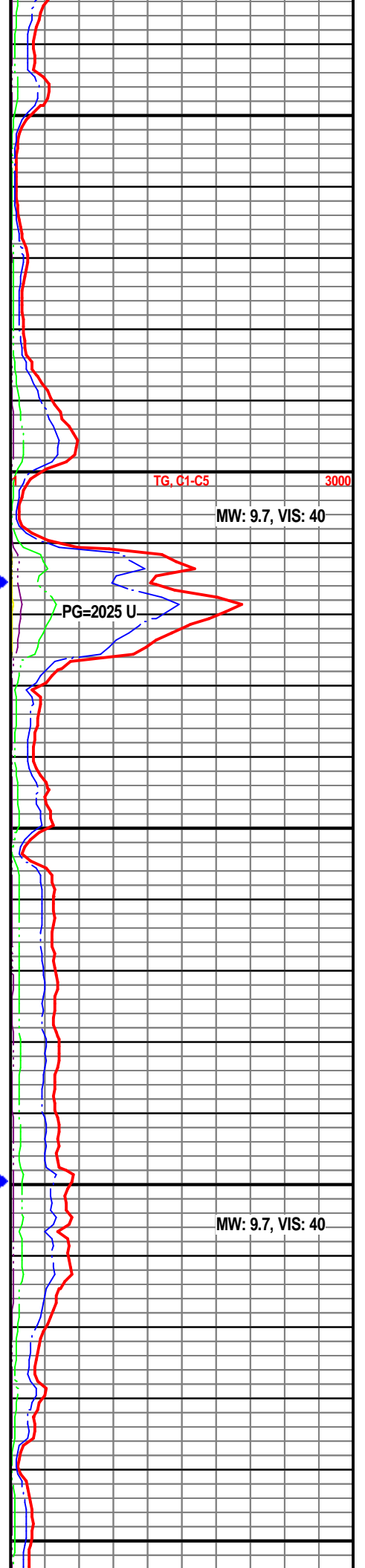
Niobrara A Top @
7386' MD, 7334' TVD

Chalky Mrlst 70%: lt-md gr, v calc, intbd biocl, frm, sbplty, no sfl, slw str wh-ylw cut. SH 30%: gy-dkgy, sft, sbplty-sbbkly, slty, grty, vs cal. Tr Bent.

Chalky Mrlst 85%: lt-md gr, v calc, intbd biocl, frm, sbplty, no sfl, slw str wh-ylw cut. SH 15%: gy-dkgy, sft, sbplty-sbbkly, slty, grty, vs cal. Tr Bent.

Chalky Mrlst 85%: lt-md gr, v calc, intbd biocl, frm, sbplty, no sfl, slw str wh-ylw cut. SH 15%: gy-dkgy, sft, sbplty-sbbkly, slty, grty, vs cal. Tr Bent.

Chalky Mrlst 85%: lt-md gr, v calc, intbd biocl, frm, sbplty, no sfl, slw str wh-ylw cut. SH 15%: gy-dkgy, sft, sbplty-sbbkly, slty, grty, vs cal. Tr Bent.



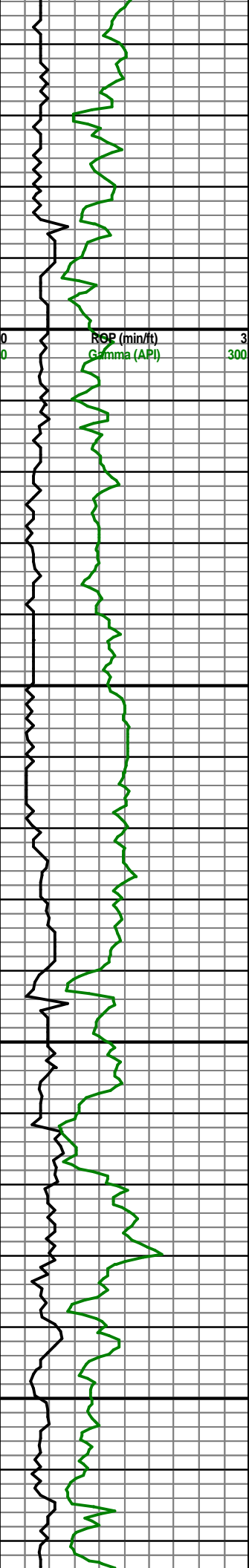
TG, C1-C5

3000

MW: 9.7, VIS: 40

PG=2025 U

MW: 9.7, VIS: 40



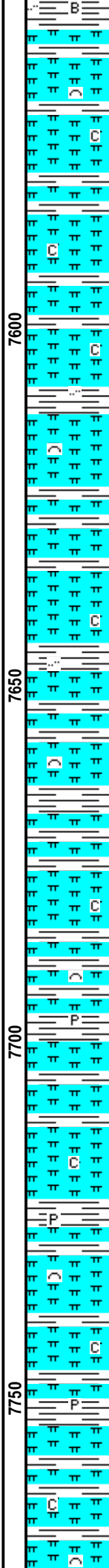
MD 7568 TVD 7506.87
Az 176.45° Inc 26.58°

MD 7611 TVD 7544.65
Az 176.54° Inc 30.46°

MD 7653 TVD 7579.82
Az 178.11° Inc 35.74°

MD 7696 TVD 7613.74
Az 178.75° Inc 40.08°

MD 7738 TVD 7644.79
Az 179.61° Inc 44.53°



Niobrara B Top @ 7569' MD. 7508' TVD

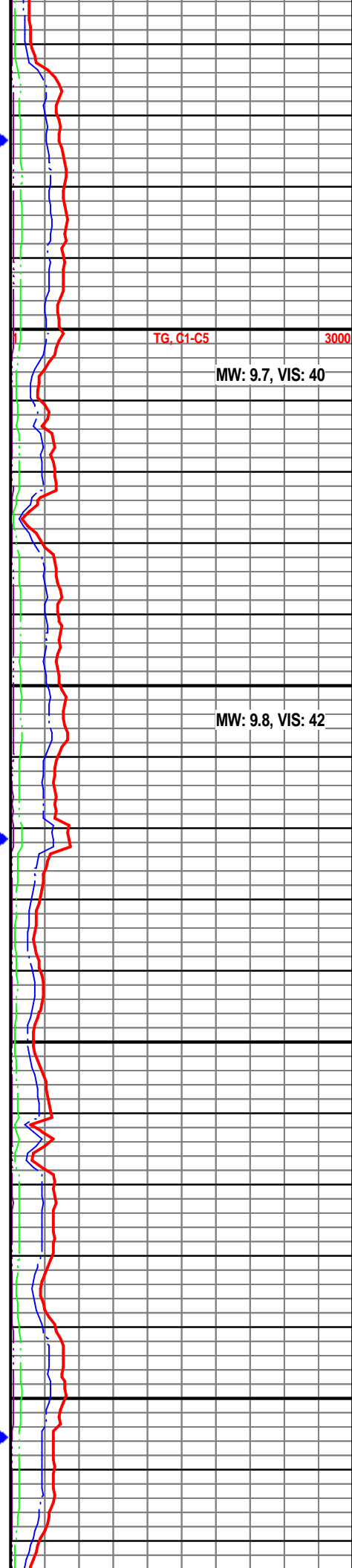
Chalky Mrlst 90%: lt-md gr, v calc, intbd
biocl, frm, sbpity, no sfl, slw str wh-ylw
cut. SH 10%: gy-dkgy, sft,
sbpity-sbbiky, slty, grty, vs cal.

Chalky Mrlst 85%: lt-md gr, v calc, intbd
biocl, frm, sbpity, no sfl, slw str wh-ylw
cut. SH 15%: gy-dkgy, sft,
sbpity-sbbiky, slty, grty, vs cal.

Niobrara C Top @ 7690' MD, 7609' TVD

Chalky Mrlst 85%: lt-md gr, v calc, intbd
biocl, frm, sbpity, no sfl, slw str wh-ylw
cut. SH 15%: gy-dkgy, sft,
sbpity-sbbiky, slty, grty, vs cal. Tr Pyt.

Chalky Mrlst 85%: lt-md gr, v calc, intbd
biocl, frm, sbpity, no sfl, slw str wh-ylw
cut. SH 15%: gy-dkgy, sft,
sbpity-sbbiky, slty, grty, vs cal. Tr Pyt.



TG, C1-C5

3000

MW: 9.7, VIS: 40

MW: 9.8, VIS: 42



MD 7781 TVD 7674.51
Az 182° Inc 48.05°

MD 7823 TVD 7701.16
Az 182.8° Inc 53.13°

10/10/13 4:30am
Depth @ 7839'MD

MD 7866 TVD 7724.83
Az 182.13° Inc 60.02°

MD 7909 TVD 7743.85
Az 181.39° Inc 67.45°

MD 7951 TVD 7757.89
Az 181.28° Inc 73.46°



Chalky Mrlst 85%: lt-md gr, v calc, intbd biocl, frm, sbpity, no sfl, slw str wh-ylw cut. SH 15%: gy-dkgy, sft, sbpity-sbbiky, slty, grty, vs cal. Tr Pyt.

Chalky Mrlst 85%: lt-md gr, v calc, intbd biocl, frm, sbpity, no sfl, slw str wh-ylw cut. SH 15%: gy-dkgy, sft, sbpity-sbbiky, slty, grty, vs cal. Tr Pyt.

Chalky Mrlst 85%: lt-md gr, v calc, intbd biocl, frm, sbpity, no sfl, slw str wh-ylw cut. SH 15%: gy-dkgy, sft, sbpity-sbbiky, slty, grty, vs cal. Tr Pyt.

**Fort Hayes Top @
7910' MD, 7744' TVD**

LS 80%: ltgy, blkgy, frm-hrd, v calc, crypxln-mxln, nsf, nsfc. Chalky Mrlst 15%: lt-md gr, v calc, intbd biocl, frm, sbpity, no sfl, SH 5% gy-dkgy, sft, sbpity-sbbiky, slty, grty, vs cal.

LS 98%: ltgy, blkgy, frm-hrd, v calc, crypxln-mxln, nsf, nsfc. SH 2%: dkgy, pty-sbpity, slty, grty, sft, sl cal.

**Codell Top @ 7986'
MD, 7767' TVD**

LS 75%: ltgy, blkgy, frm-hrd, v calc, crypxln-mxln, nsf, nsfc. SS 20%:

TG, C1-C5

3000

MW: 9.8, VIS: 42

10/10/13 @ 2:10am
TOOH for new BHA.

10/10/13 @ 1:00pm
B.O.B.

MW: 9.8, VIS: 43

