



Memory and Realtime Log

Natural Formation Evaluation
Multiple Propagation Resistivity
Gamma Ray

Scale: **1:240**

Company: Anadarko

Well: D&C Farms 35C-33HZ

Measured Depth Field: Weld County (Kerr McGee)

Region: Rocky Mountains Country: United States

Status: Surface Location: Other Services:

Field Print

Latitude: 40° 1' 0.638" N

Longitude: 104° 53' 50.118" W

API Number: 051 233789200

SEC: 28 TWN: 1N RGE: 67W

Directional

Permanent Datum (P.D.): Ground Level Elevation: 5010.00 ft.

Elevations:

Log Measured From: Rig Floor 16.00 ft. Above P.D.

N/A

Depth Reference: Driller's Depth

5026.00 ft. 5010.00 ft.

Interval Logged

Dates

Magnetic Field Reference

Top: 7169.0 ft. Date From: 09/Oct/13 Dip Angle: 66.31° Azi Reference North: True

Bottom: 12849.0 ft. Date To: 14/Oct/14 Total Mag to Reference

Spud Date: 08/Oct/13 Field Strength: 52716.0 nT North Correction: 8.46°

Borehole Record

Casing Record

Hole Size	From	To	Size	Weight	From	To
8.750 in.	1031.0 ft.	8109.0 ft.	9.625 in.	36.00 lb/ft	Surface	1021.0 ft.
6.125 in.	8109.0 ft.	12889.0 ft.	7.000 in.	26.00 lb/ft	Surface	8090.0 ft.

Mud Record

Deviation Record

Type	From	To	Hole Size	Interval	Inc / Az (Start)	Inc / Az (End)
Drill Water	Surface	8109.0 ft.	8.750 in.	85.0 ft.	0.2° / 305.3°	0.3° / 19.3°
LSND	8109.0 ft.	12889.0 ft.	8.750 in.	42.0 ft.	0.3° / 19.3°	87.0° / 103.5°
			6.125 in.	85.0 ft.	87.0° / 103.5°	88.8° / 177.3°
					/	/
					/	/
					/	/
					/	/

Acquisition System Software Version

Other

Advantage	2.20U4	Rig / Contractor:	Xtreme 24	/ Xtreme Coil Drilling Corp
PATS	6.4.1.34	Job No:	5793108	/ D & E
		District / Unit:	RMD	

INTEQ does not guarantee the accuracy or correctness of interpretations provided in or from this log. Since all interpretations are opinions based on measurements, INTEQ shall under no circumstances be responsible for consequential damages or any other loss, costs, damages or expenses incurred or sustained in connection with the use of any such interpretations. INTEQ disclaims all expressed and implied warranties related to this service. INTEQ's liabilities and obligations shall be governed by INTEQ's Standard Terms and Conditions.

Log Run Summary

LWD	BHA	Bit	Bit	Bit	Bit	Assembly	Logged Interval		Bit Depth Interval		Date / Time				Circ.
Run	Run	Run	Size	Type	Gauge	Type	Top	Bottom	From	To	Start		End		Time
No.	No.	No.	(in.)		(in.)		(ft.)	(ft.)	(ft.)	(ft.)					(hrs.)
1	1	1	8.750	PDC	2.000	Steerable	7169.0	7783.0	7225.0	7783.0	09/Oct/2013	15:10	10/Oct/2013	06:00	30.4
2	2	2	8.750	PDC	2.000	Steerable	7787.0	8057.0	7839.0	8109.0	10/Oct/2013	09:30	11/Oct/2014	04:00	10.9
3	3	3	6.125	PDC	6.000	Steerable	8069.0	12849.0	8109.0	12889.0	12/Oct/2013	05:00	14/Oct/2014	11:30	49.7

Crew

Name	Arrive	Depart	Name	Arrive	Depart	Name	Arrive	Depart
	Wellsite	Wellsite		Wellsite	Wellsite		Wellsite	Wellsite
Osagie Otoikhine	07/Oct/2013	15/Oct/2013	Austin Small	07/Oct/2013	10/Oct/2013	Marcus Boucher	10/Oct/2013	15/Oct/2013

Mud Properties Record

Date / Time		LWD Run No.	Measured Depth (ft.)	Mud Type	Density (ppg)	Viscosity (cp)	pH	Fluid Loss (cc)	Oil / Water	Source	Total Chlorides (ppm)	K+ (%)
08/Oct/2013	18:00	1	2121.0	Drill Water	8.5	1	9.1	N/A	0.0/98.5	Flowline	1200	N/A
09/Oct/2013	18:00	1	7099.0	LSND	9.7	11	8.5	N/A	1.0/91.5	Active Pit	1200	N/A

Mnemonics

Curve	Description	Units
ROPA	Rate of Penetration, 3.0 ft. Avg.	ft/hr
GRAM	Gamma Ray Apparent, 0.5 ft. Avg.	API
GRAX	Gamma Ray Apparent, 0.5 ft. Avg.	API
GRIM	Gamma Ray Data Density	points
GRIX	Gamma Ray Data Density	points
GRSI	Gamma Ray Slide Indicator	unitless
RACHM	Resistivity (AT) (LS) 2MHz - Compensated Borehole Corrected	ohm.m
RPCLM	Resistivity (PD) (LS) 400kHz - Compensated Borehole Corrected	ohm.m
RPCHM	Resistivity (PD) (LS) 2MHz - Compensated Borehole Corrected	ohm.m
CACLM	Conductivity (AT) (LS) 400kHz - Compensated Borehole Corrected	mho/m
RPTHM	Time Since Drilled [RPCHM]	mins
RPSHIM	Resistivity Slide Indicator	unitless

Equipment and Service Data

LWD Run No.	Tool	Serial Number	Measurement	Bit Offset (ft.)	Max O.D. (in.)	Min I.D. (in.)
1	DIR	12546344	Directional	58.78	6.750	3.250
1	SRIG	12131378	Gamma	55.41	6.750	3.250
2	DIR	12546344	Directional	54.45	6.750	3.250
2	SRIG	12131378	Gamma	51.08	6.750	3.250
3	CS	10635401	-	71.11	5.000	2.060
3	BCPM	12523716	Telemetry	60.25	5.000	2.060
3	STAB	11864240	-	57.28	5.375	2.060
3	OTK	11853948	Directional	52.84	5.000	2.060
3	OTK	11853948	Resistivity	46.87	5.000	2.060
3	OTK	11853948	Gamma	39.68	5.000	2.060
3	OTK	11853948	Pressure	42.31	5.000	2.060
3	CS	10432083	-	35.51	5.000	2.060

Service and Tool Mnemonics

Mnemonic	Name	Description
BCPM	BCPM	Mud pulse telemetry and downhole tool power module
DIR	Directional	Wellbore directional survey
OTK	OnTrak	Propagation resistivity, propagation conductivity, gamma ray, directional, annular pressure, system memory and VSS

Number	Measured	Hole	LWD	Remark
	Depth	Section	Run No.	
	(ft.)	(in.)		
1	7156	8.750	1	The Interval from surface to 7169 feet MD (7118 feet TVD) was not logged since logging services began at the kick off point.
2	7818	8.750	1	The interval from 7784 feet to 7841 feet MD (7676 feet to 7711 feet TVD) was logged up to 12 hours after being drilled due to trip out of hole to pick up a new motor so better build rates could be achieved in the curve.
3	8078	8.750	2	The interval from 8054 feet to 8109 feet MD (7775 feet to 7777 feet TVD) was logged up to 12 hours after being drilled due to trip out of hole for casing and cementing operations.
4	12857	6.125	3	Interval from 12849 feet to 12889 feet MD (7802 feet to 7803 feet TVD) was not logged due to gamma ray sensor offset at well TD.

See Remark 1

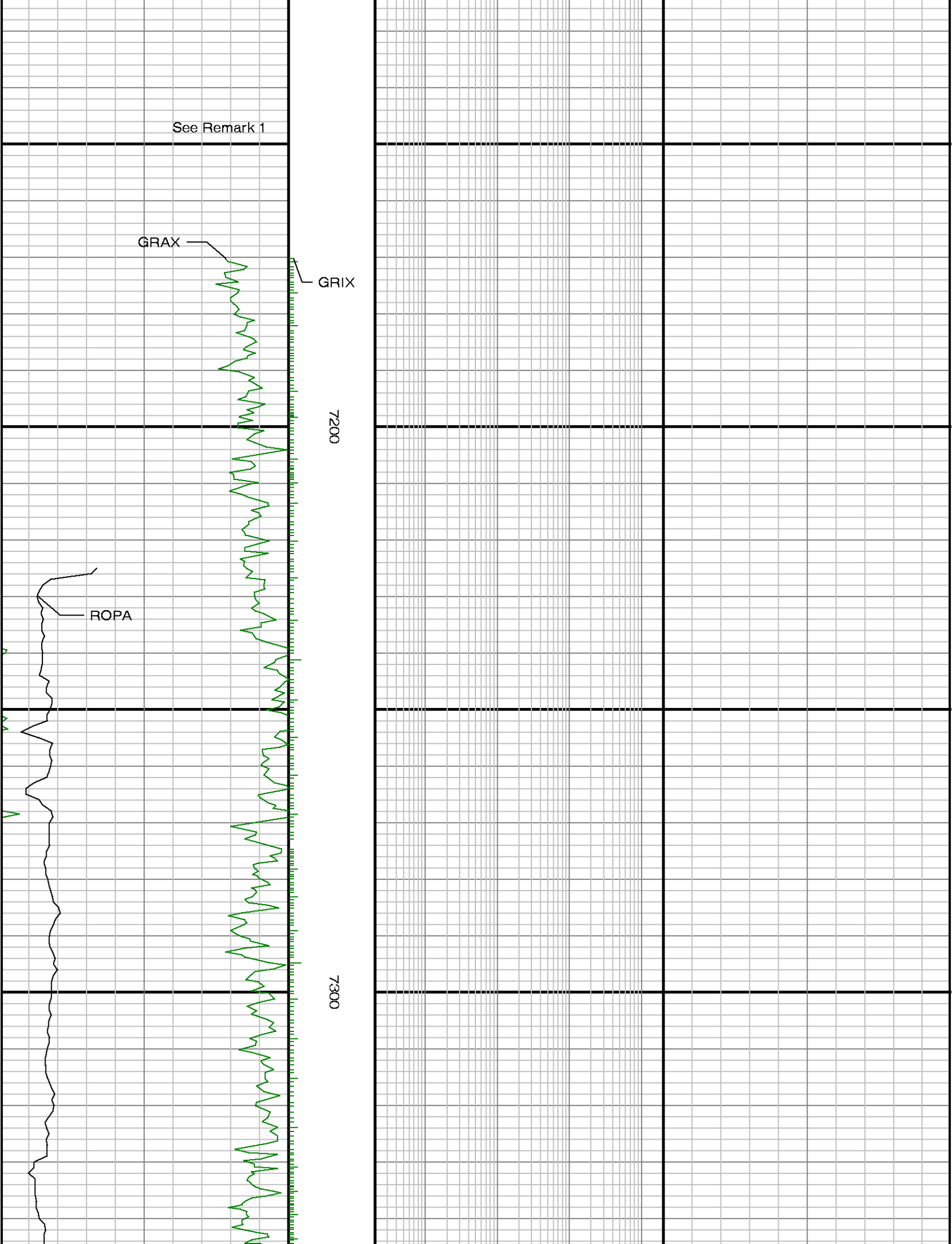
GRAX

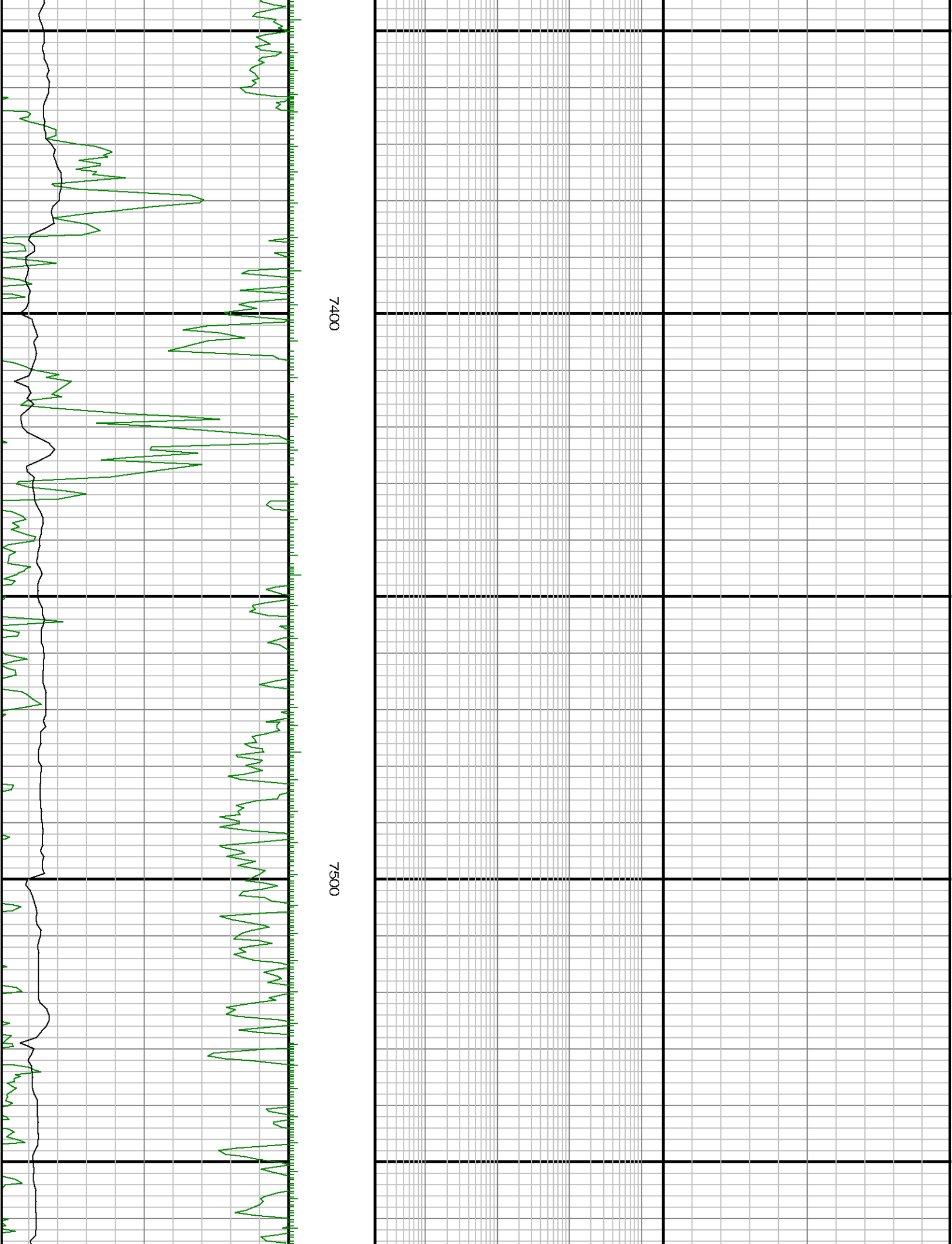
GRIX

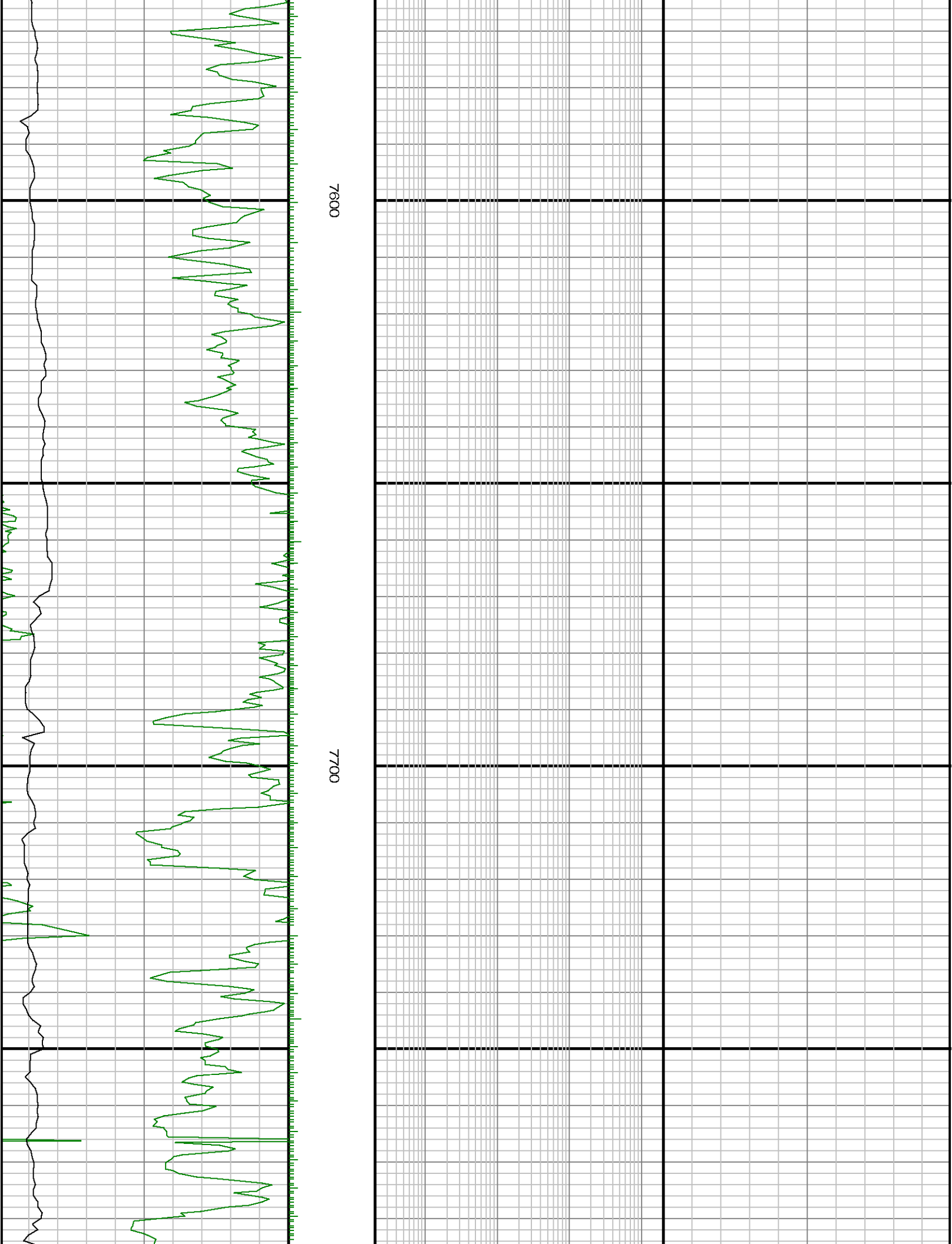
7200

ROPA

7300







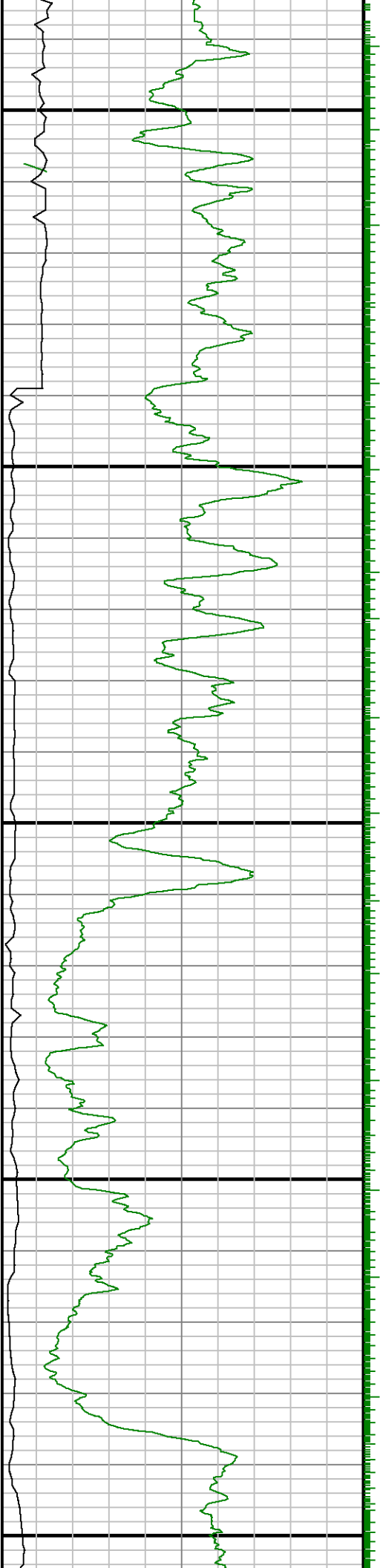
See Remark 2

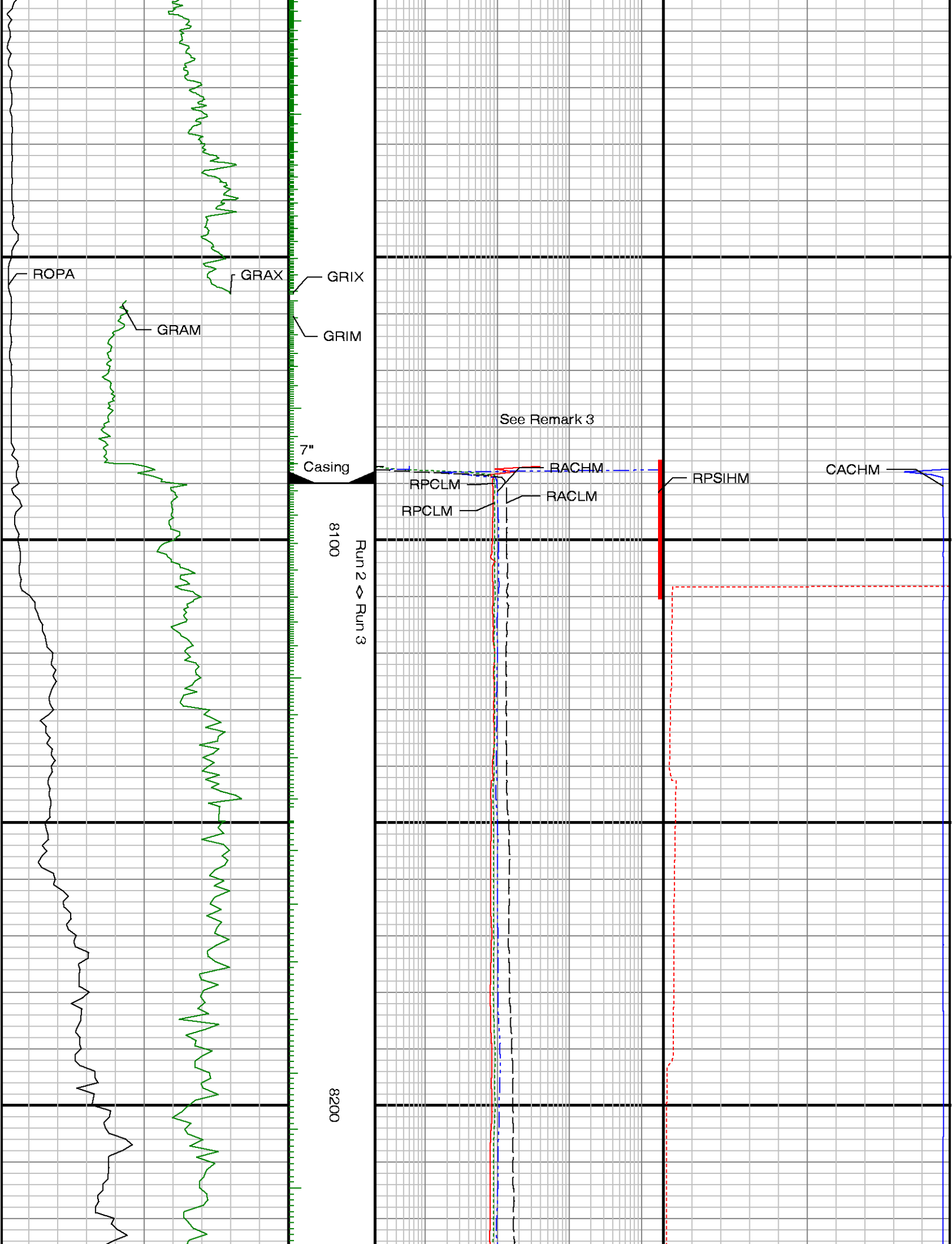
Run 1 \diamond Run 2

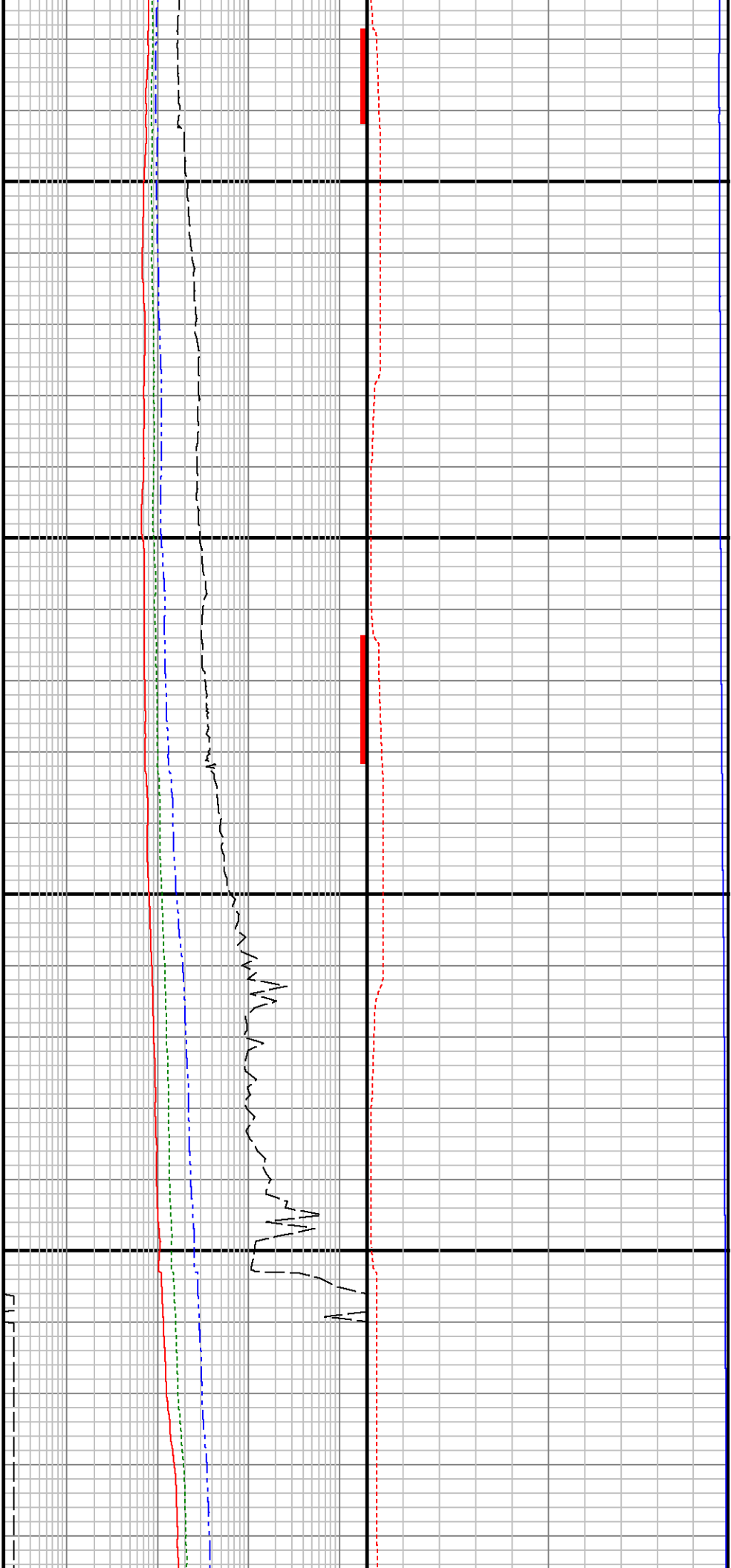
7800

7900

8000

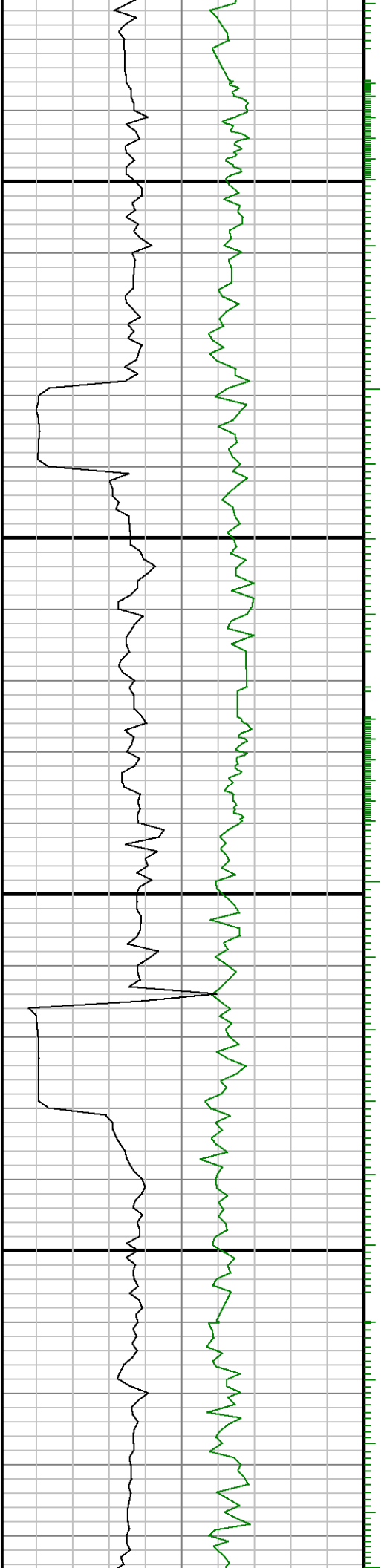


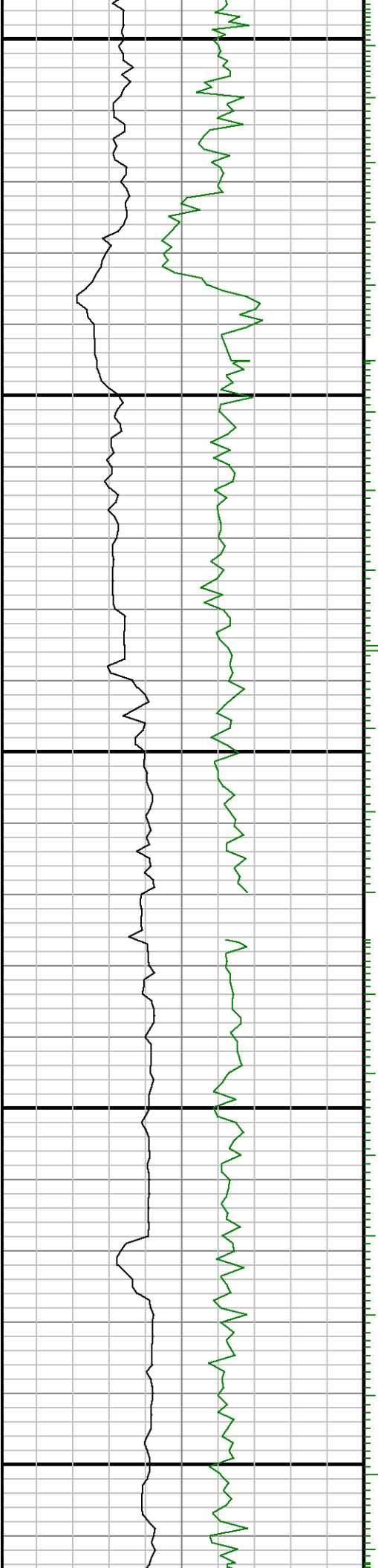




8300

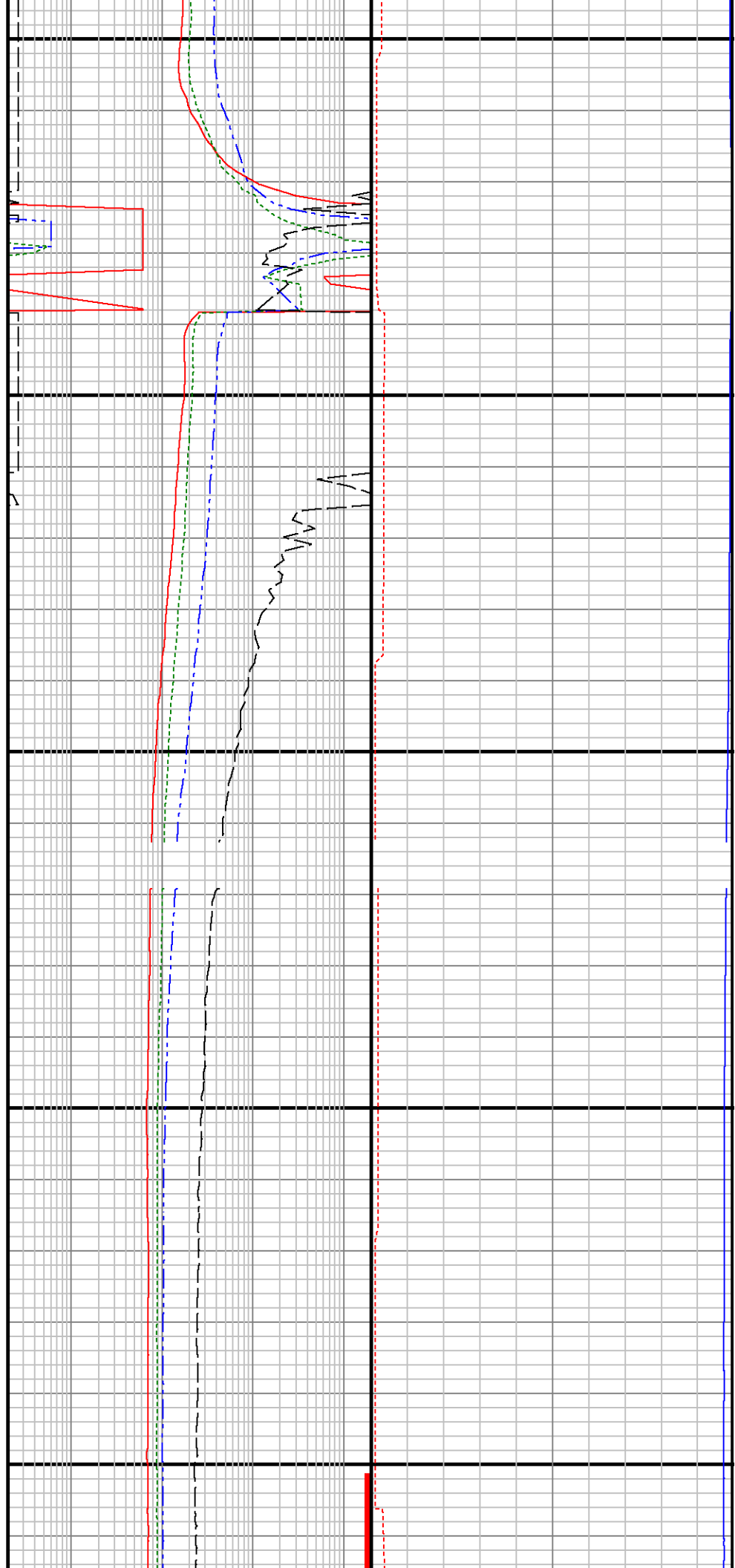
8400

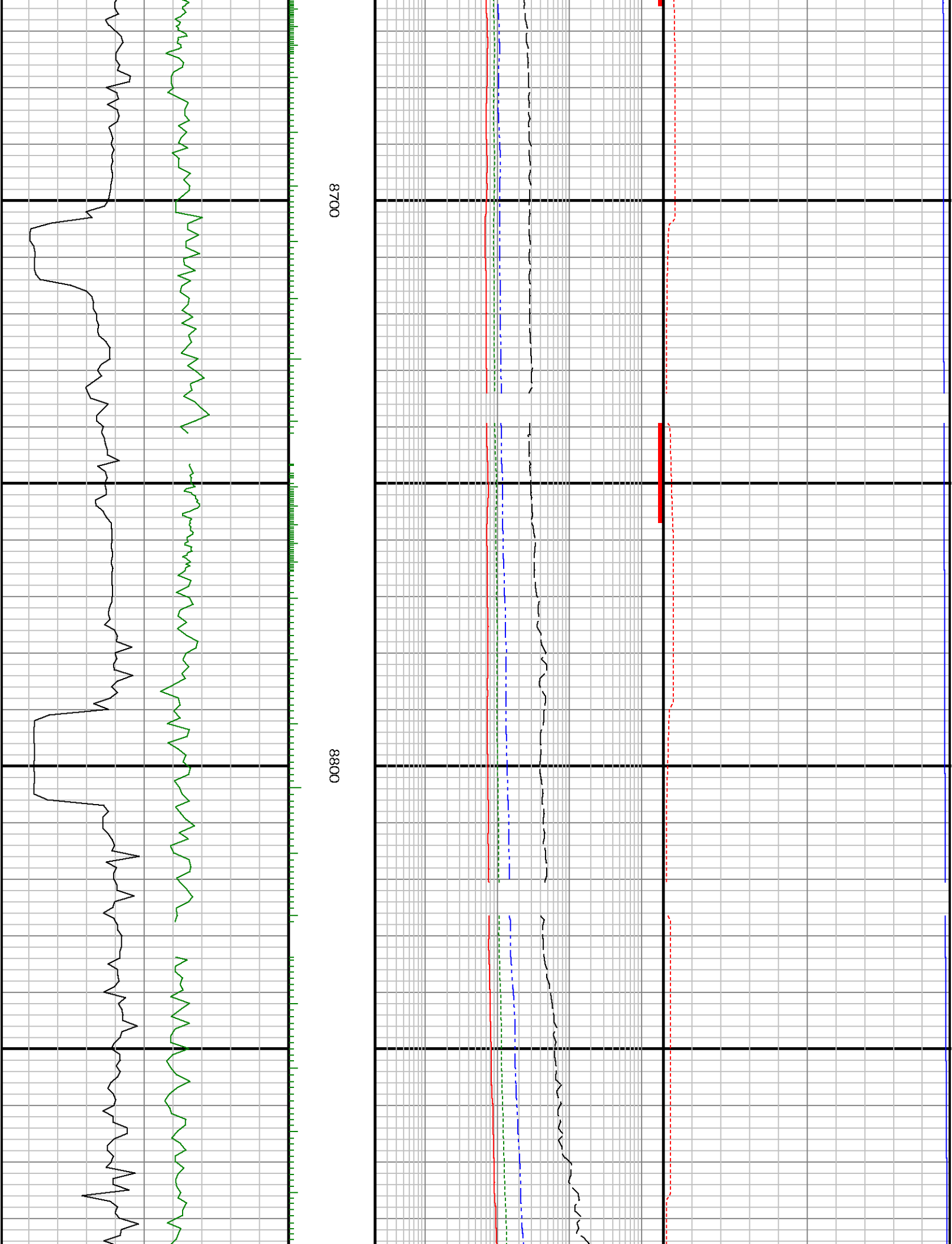


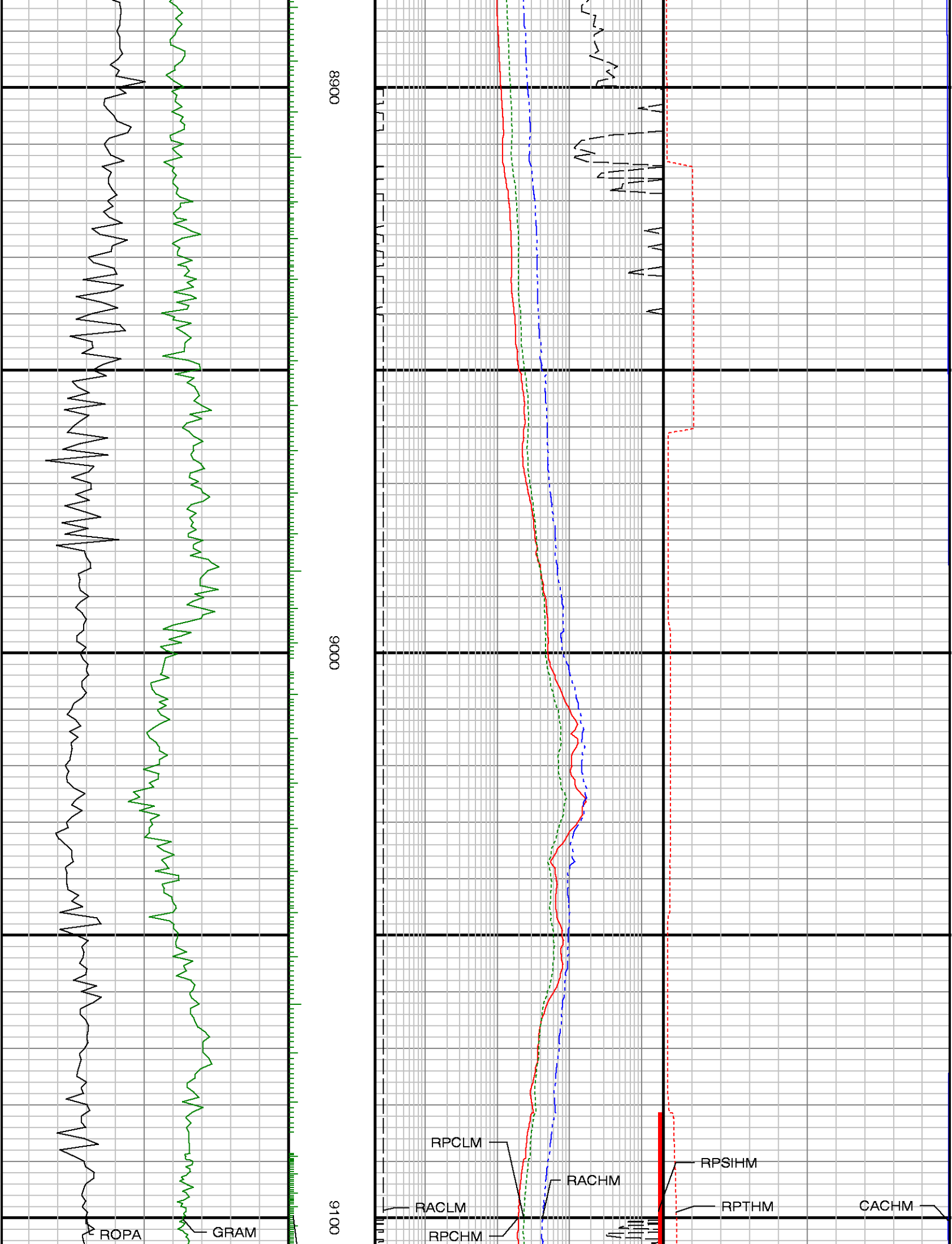


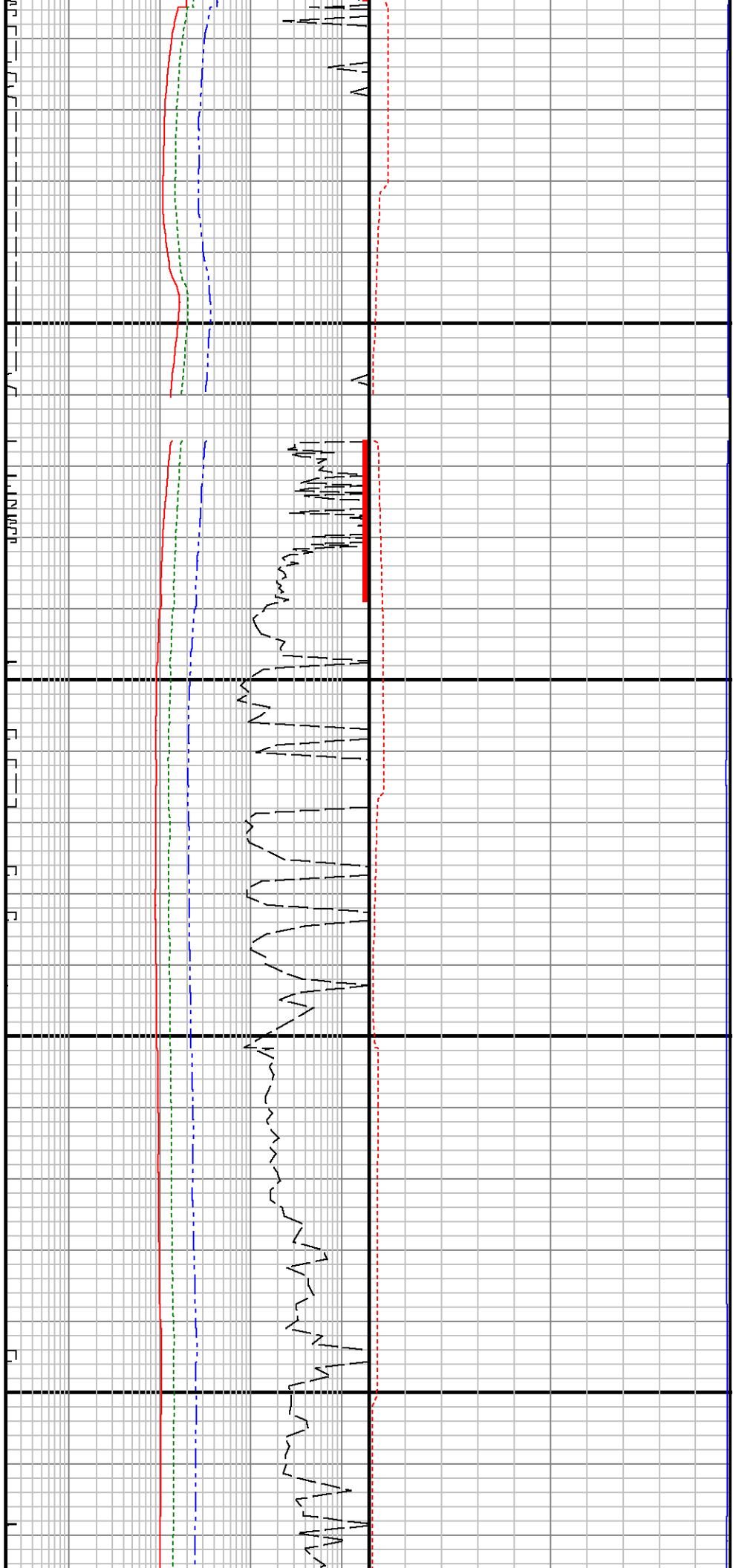
8500

0098





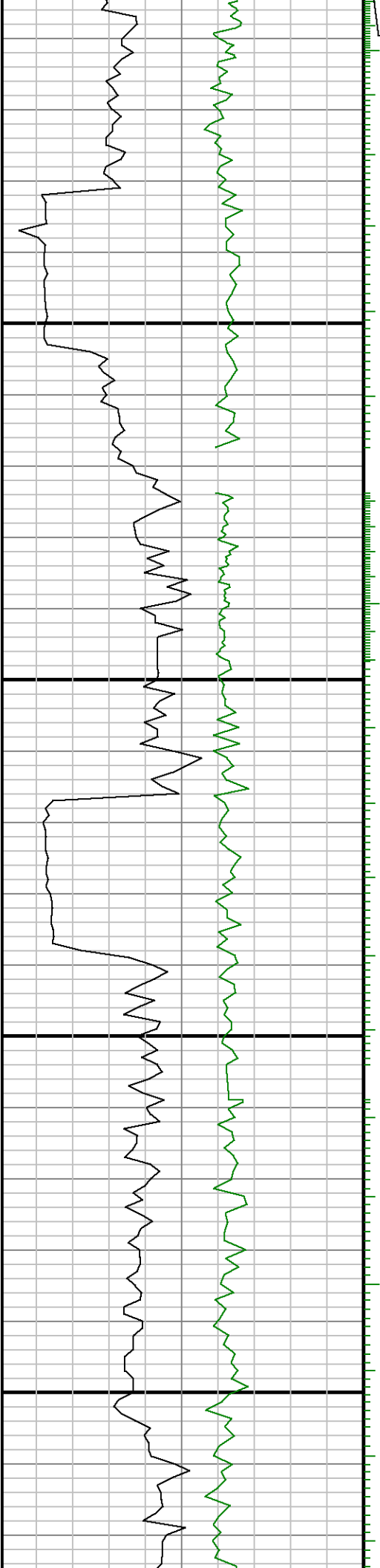


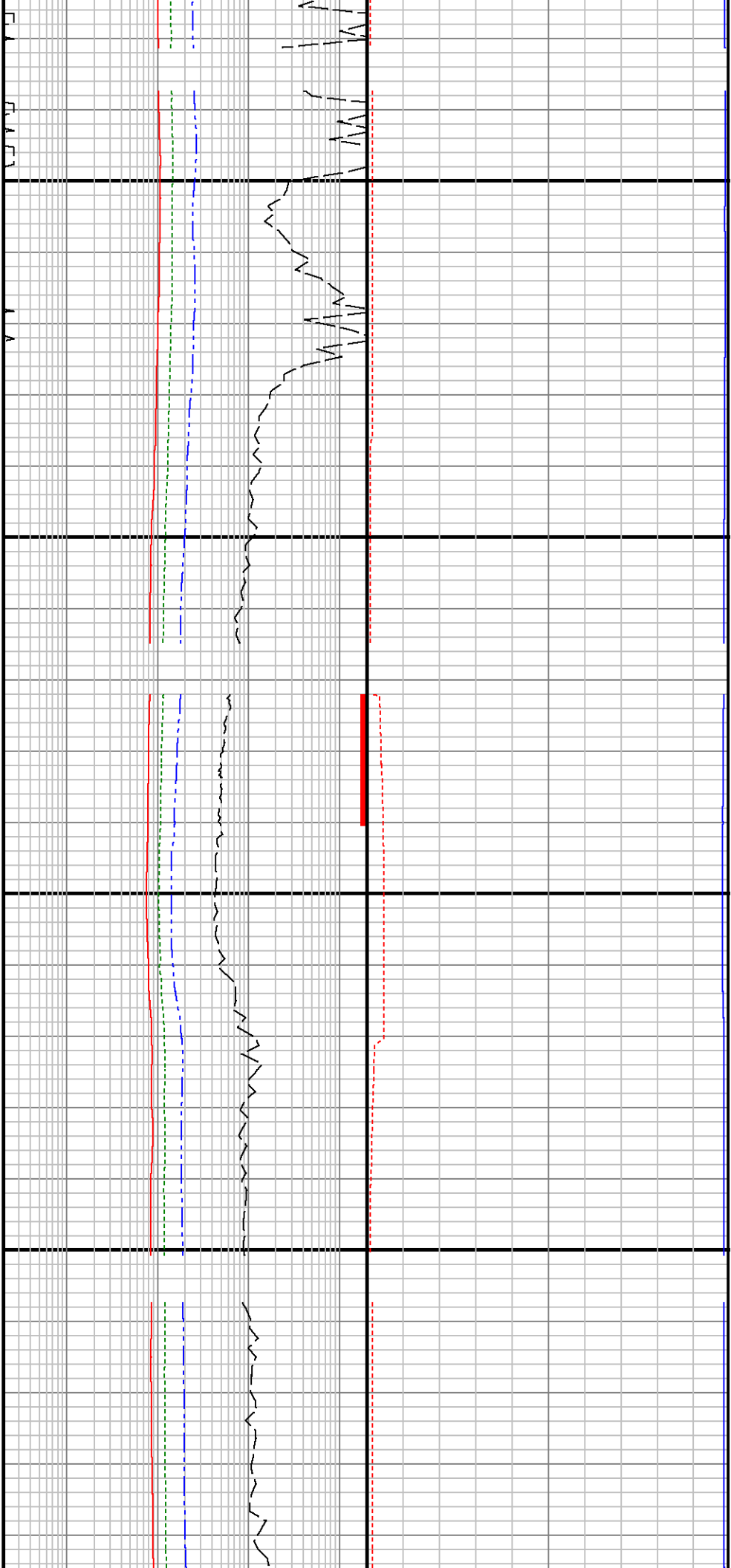


GRIM

9200

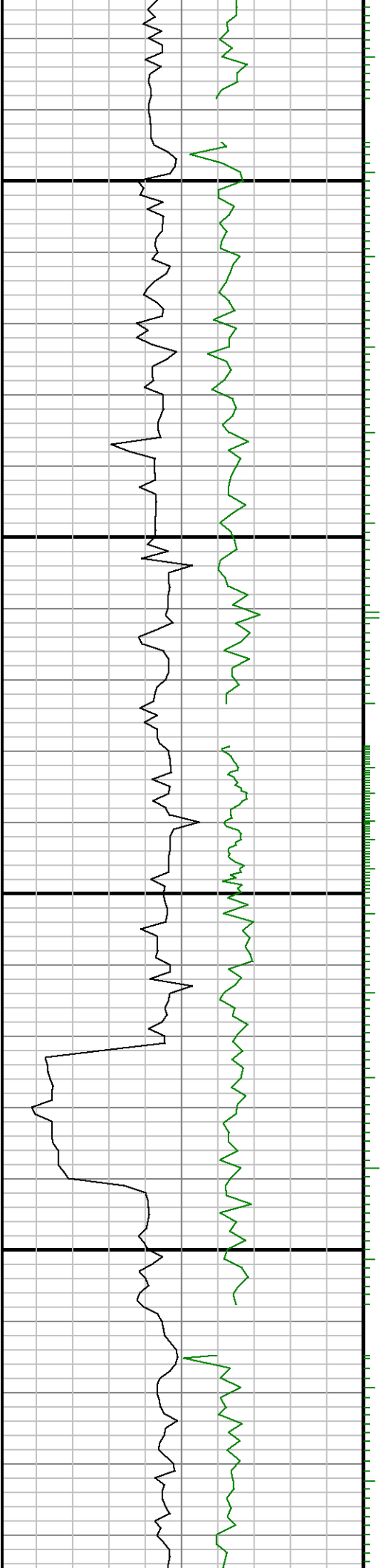
9300

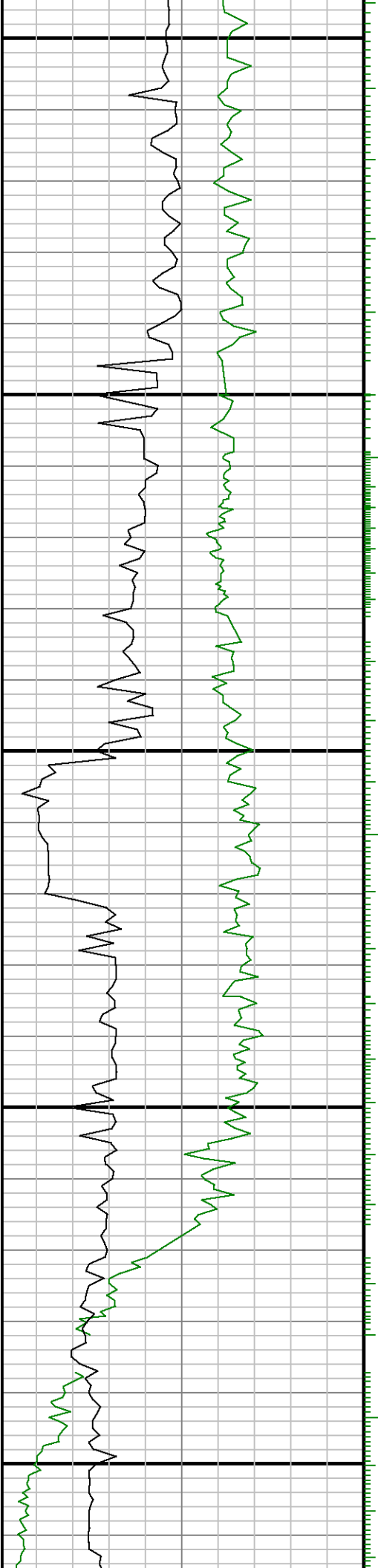




9400

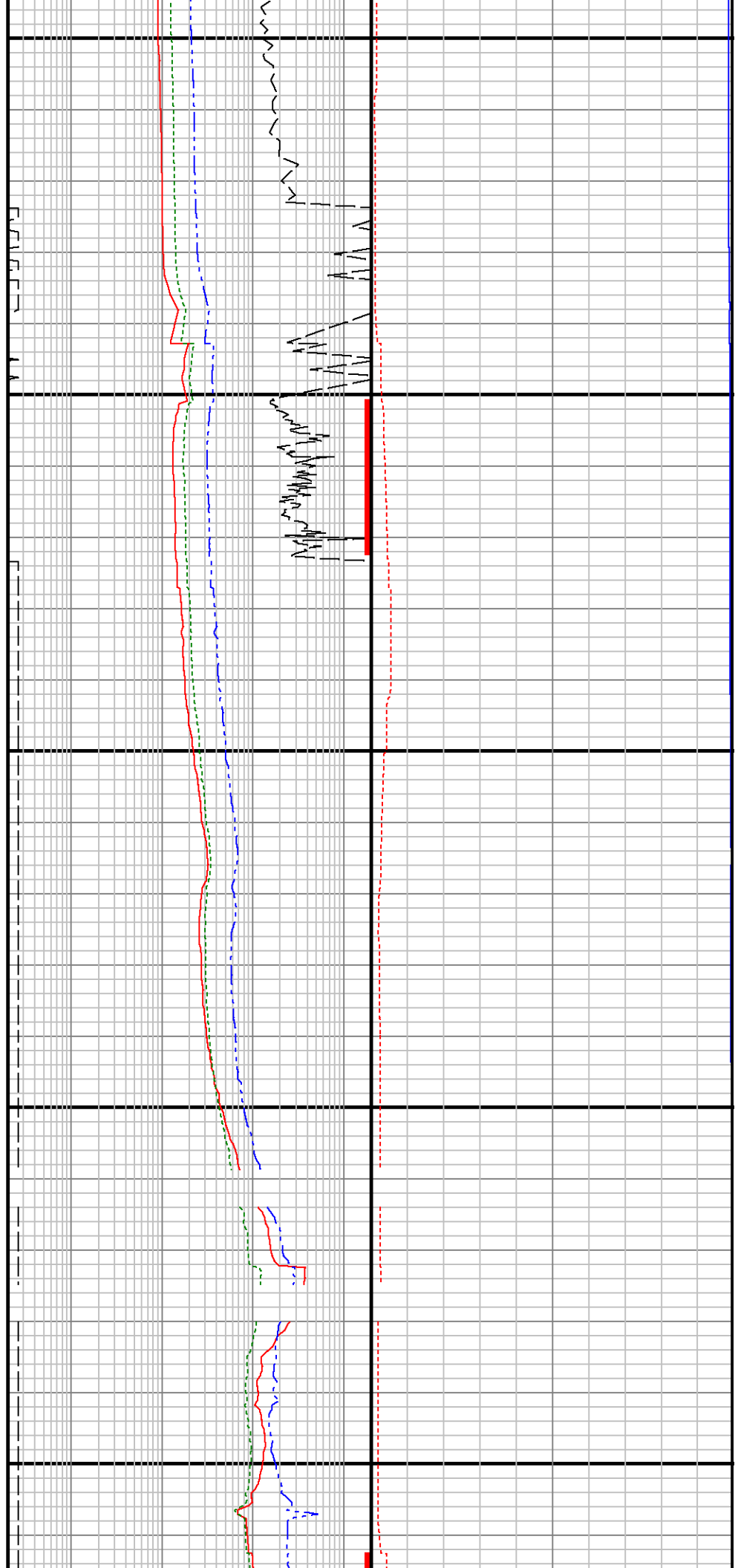
9500

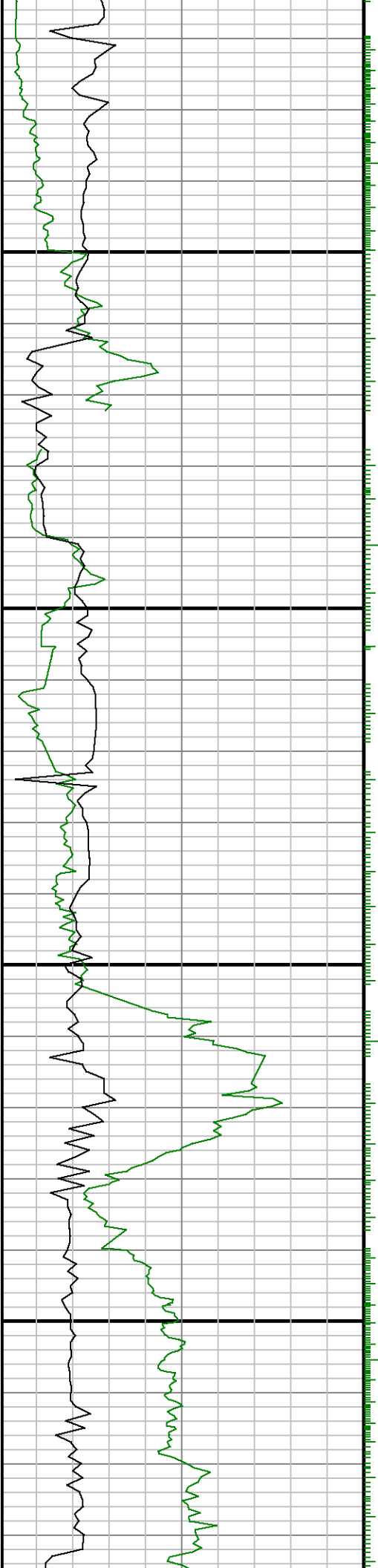




0096

9700

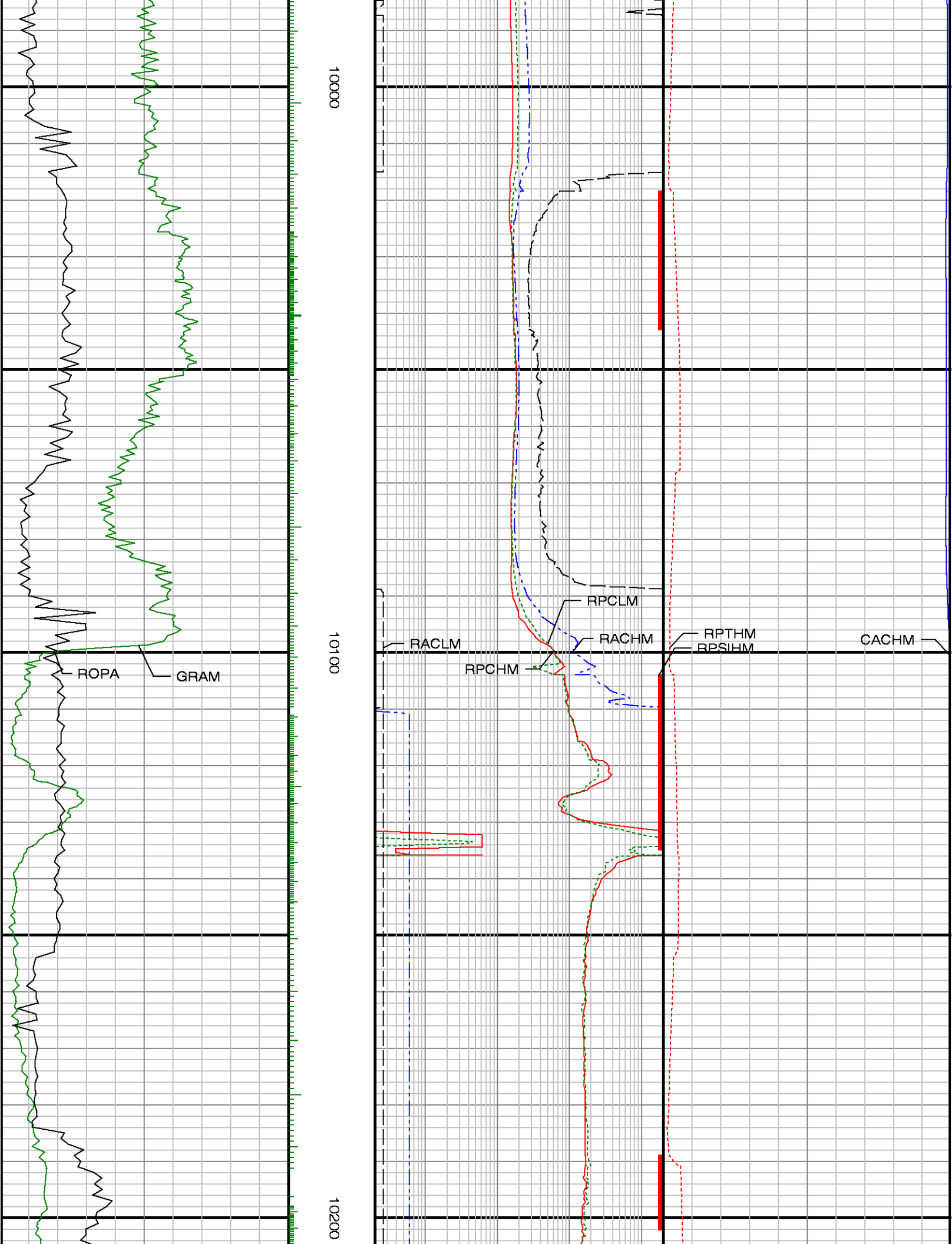




0086

0066

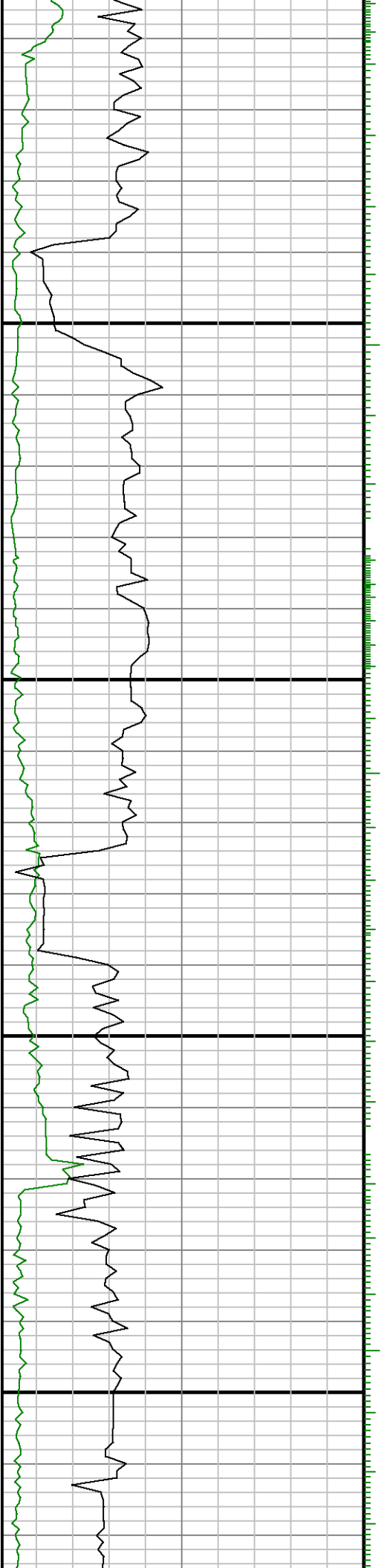


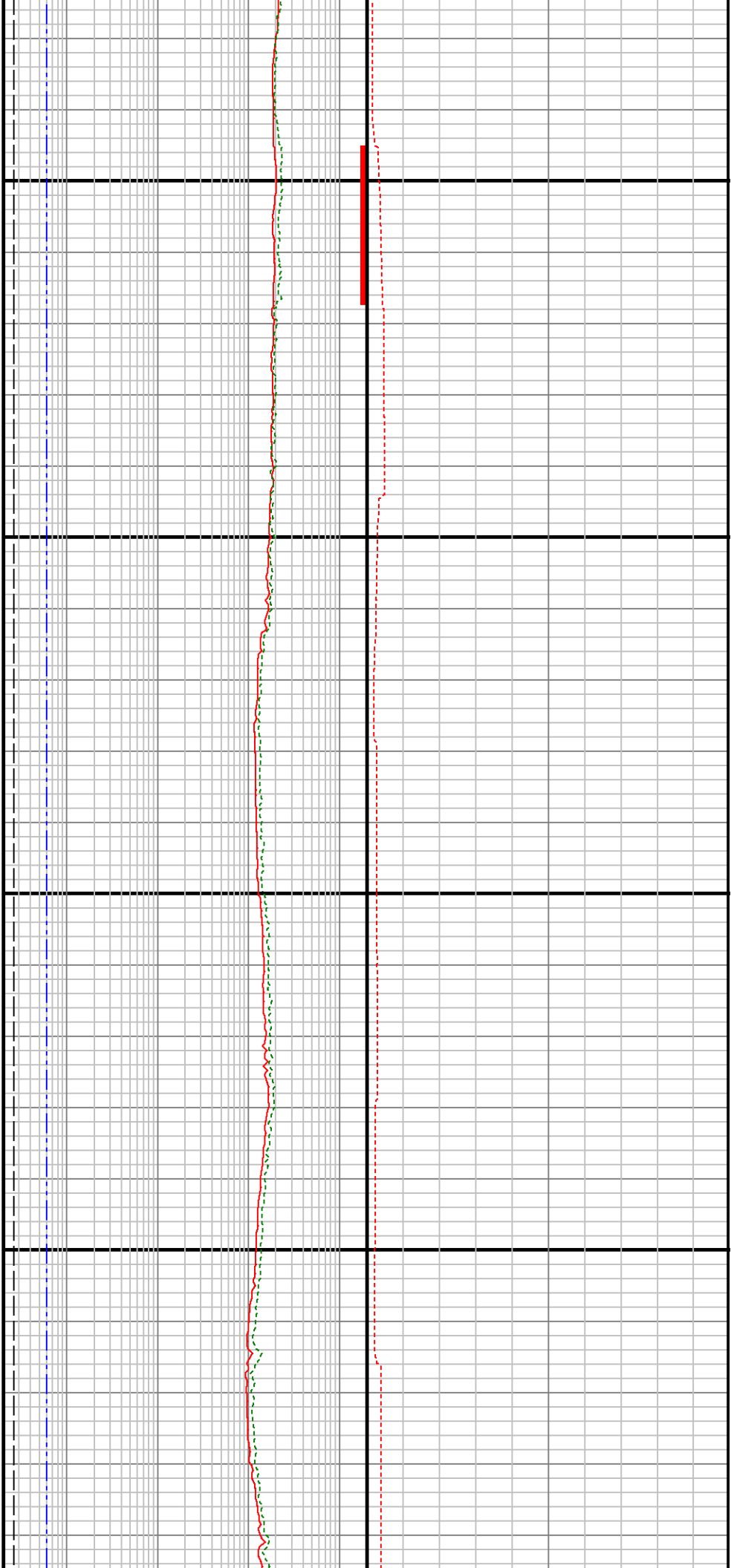




10300

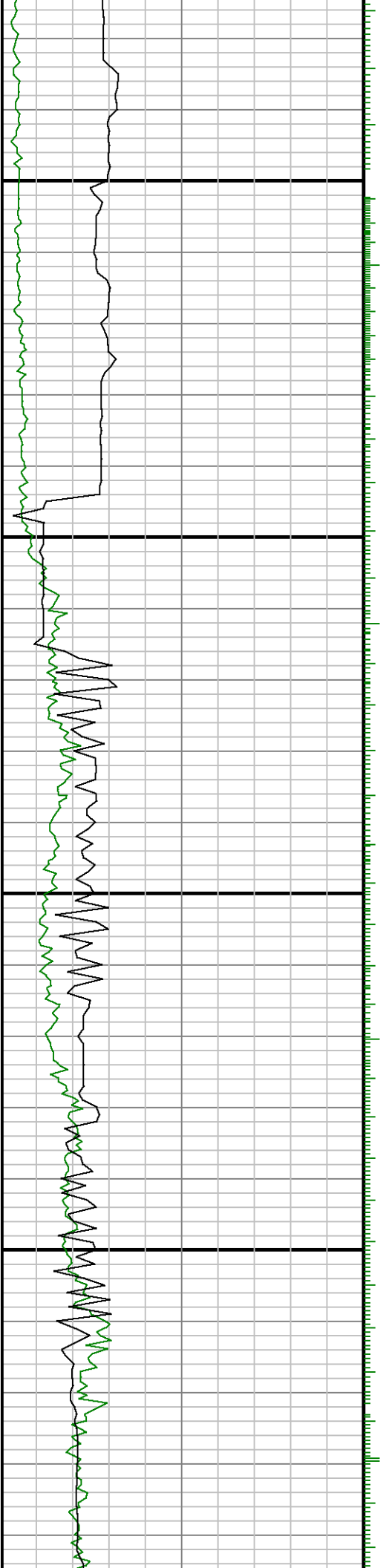
10400





10500

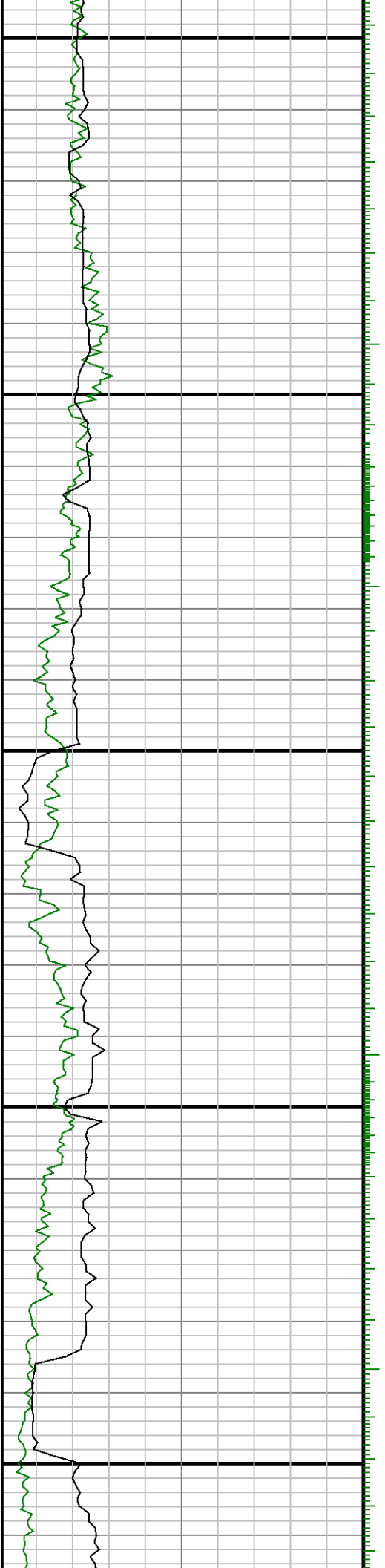
10600

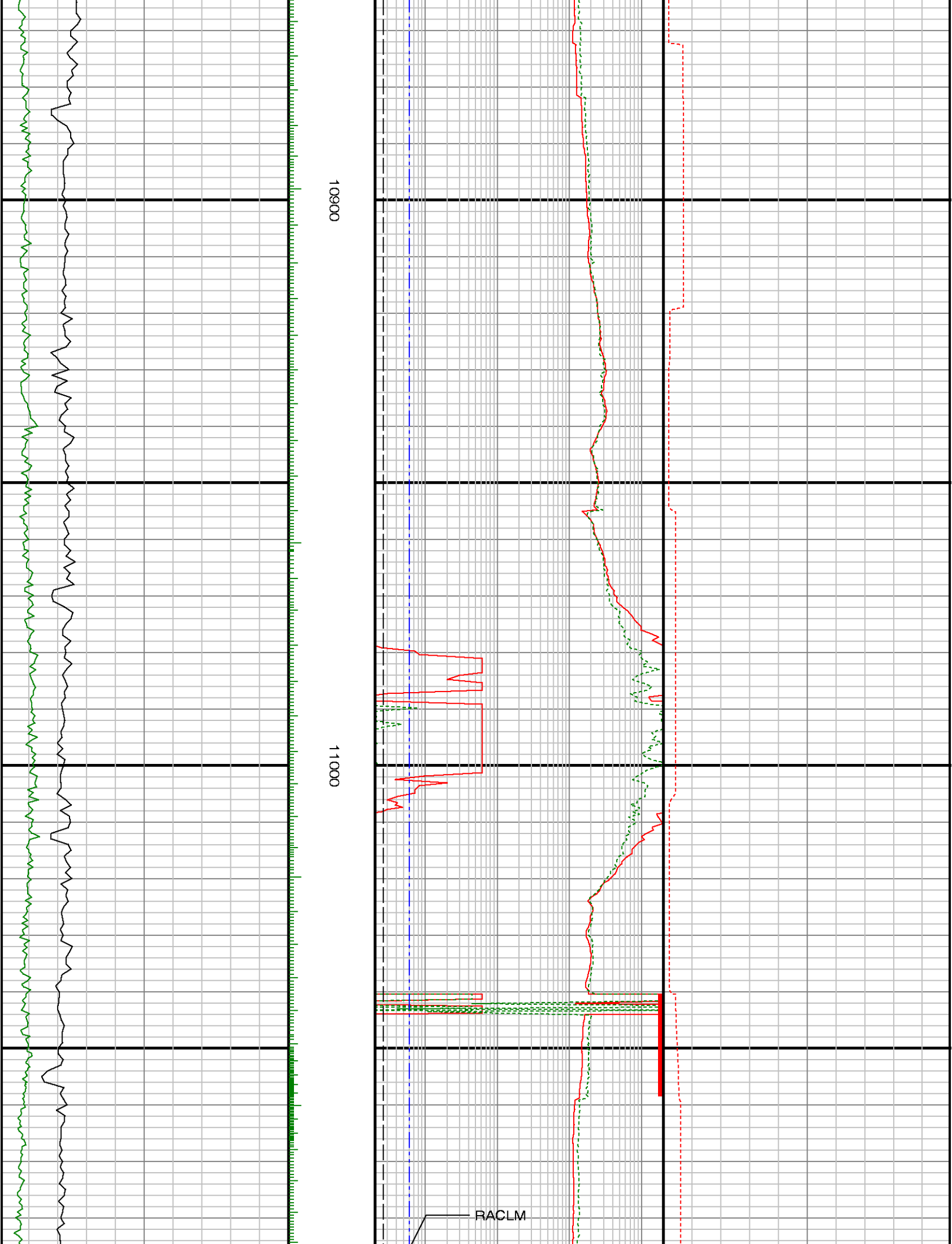


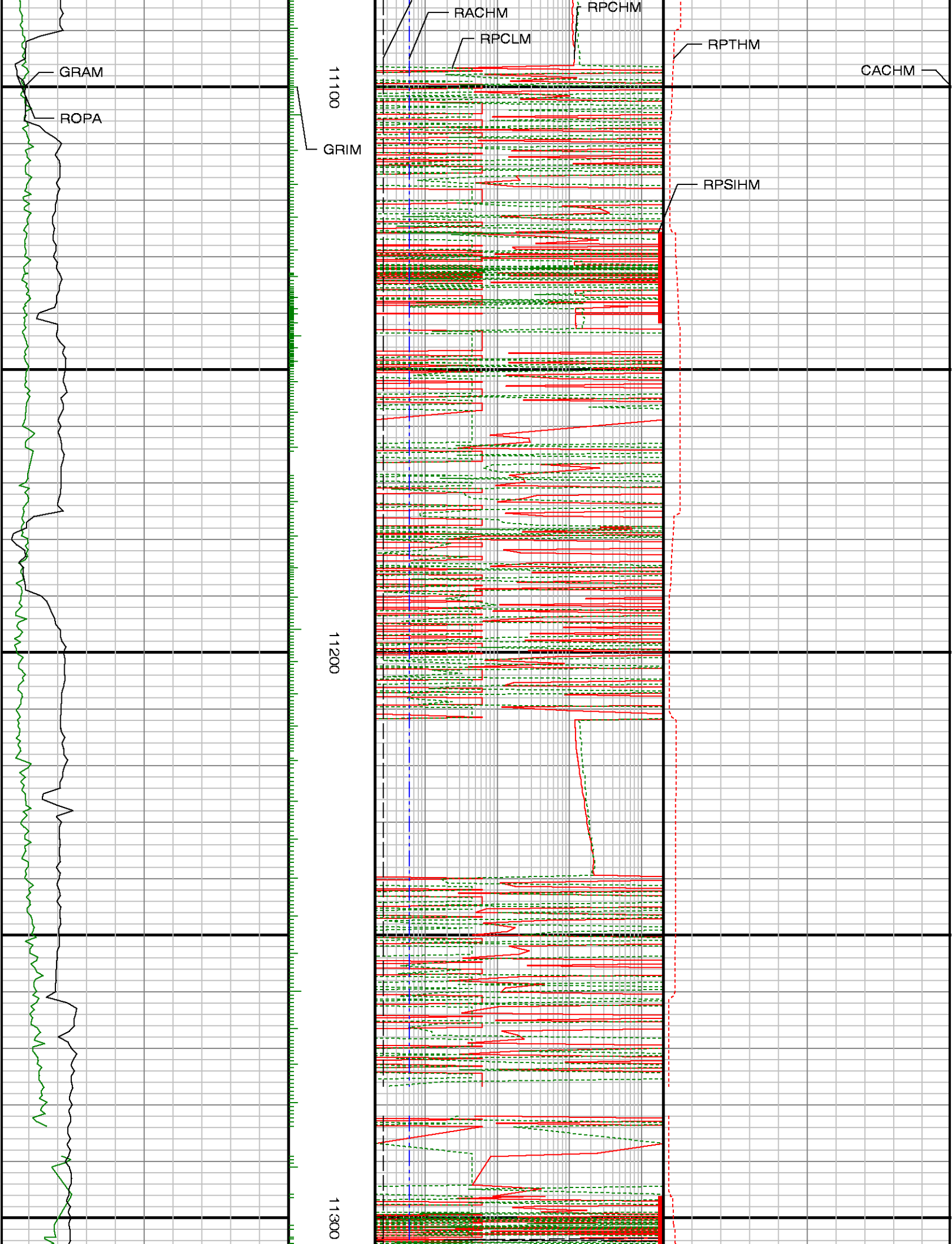


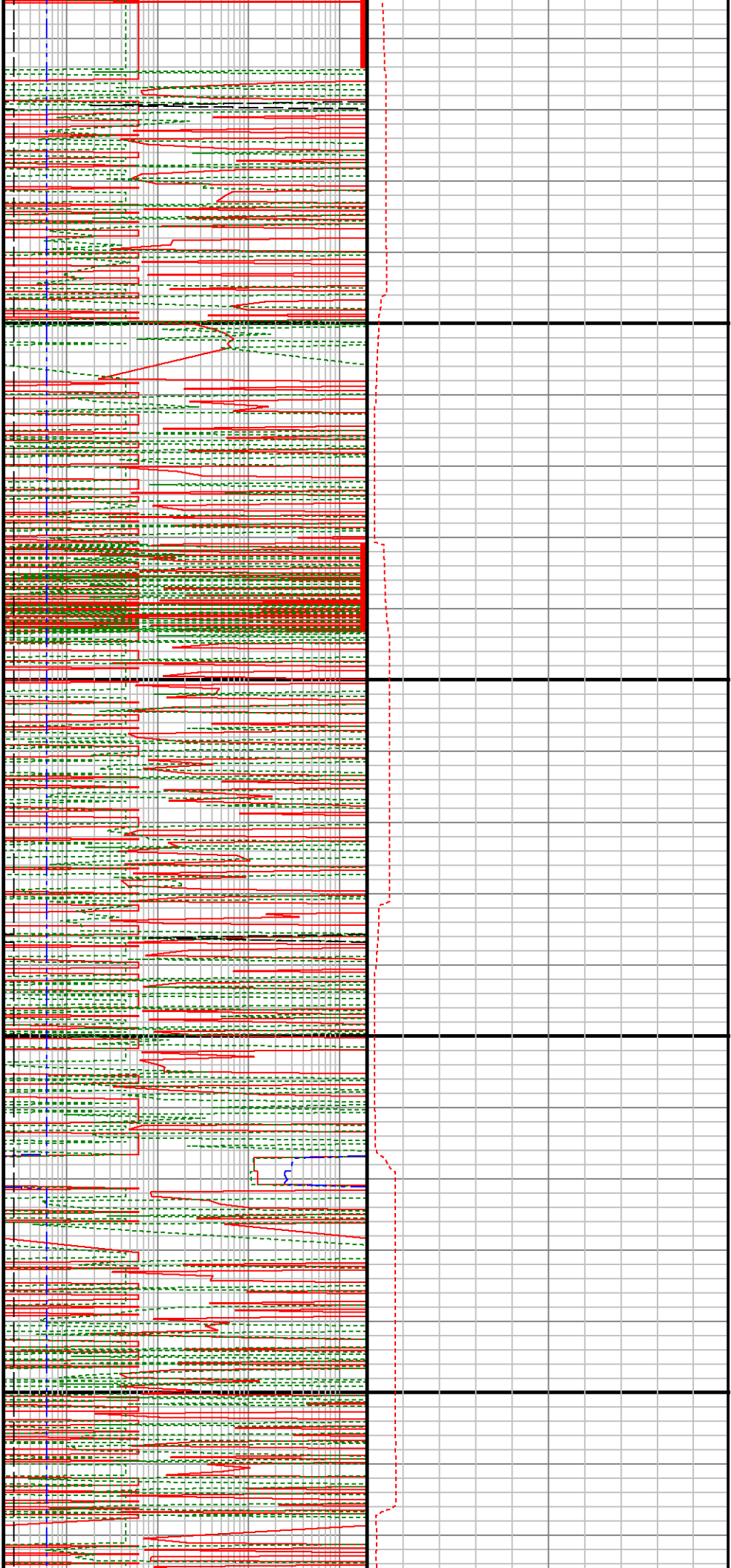
10700

10800



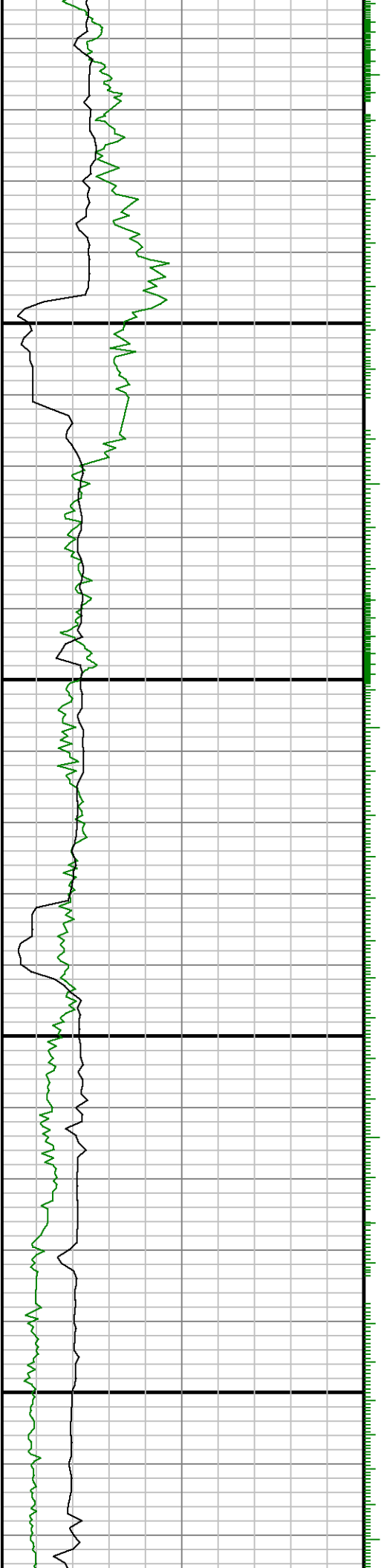


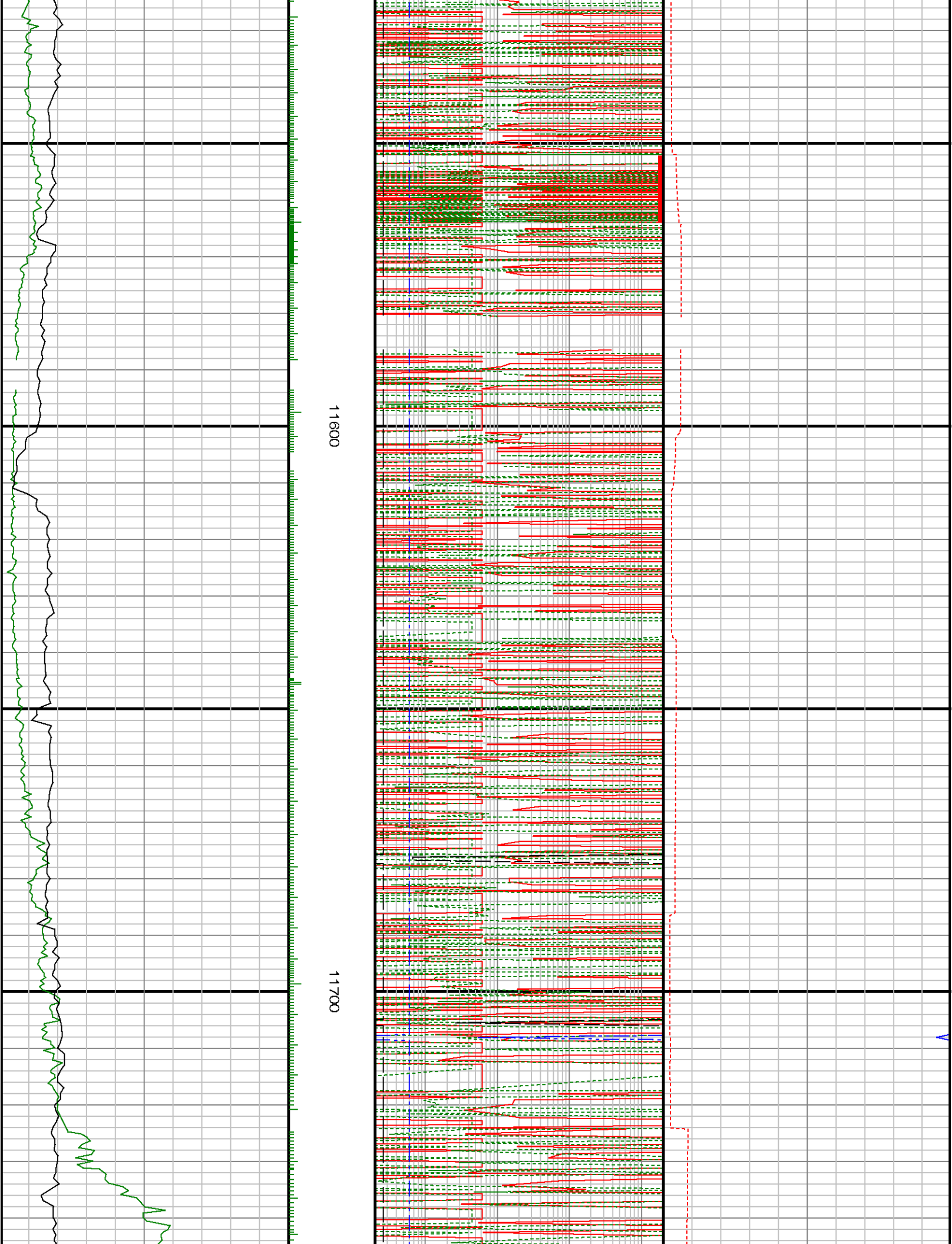




11400

11500

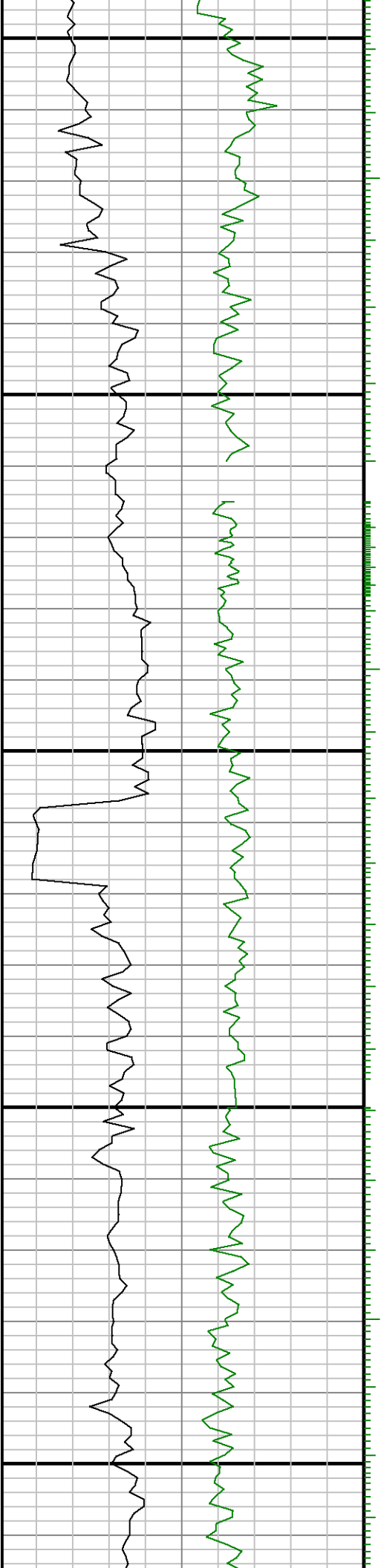


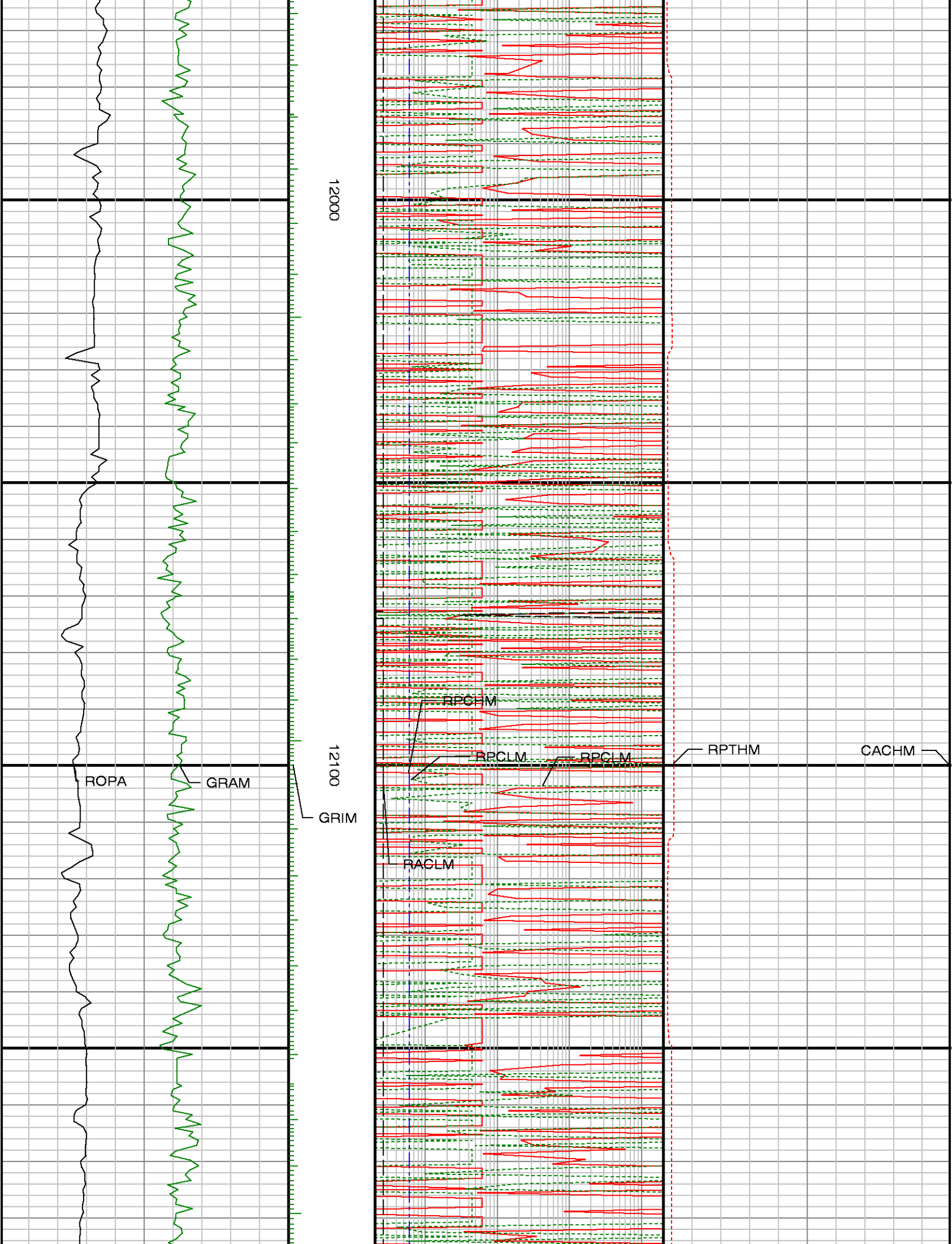


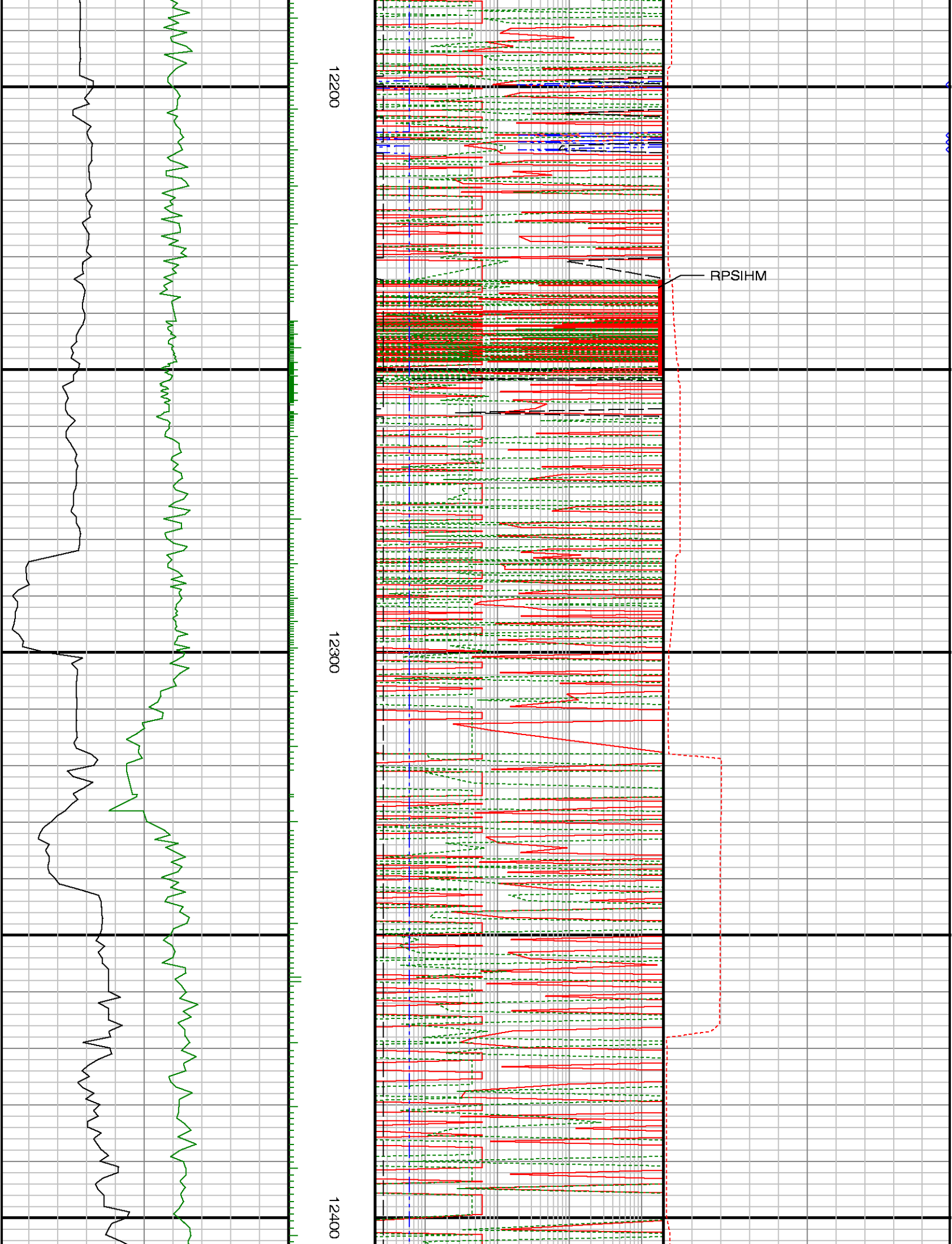


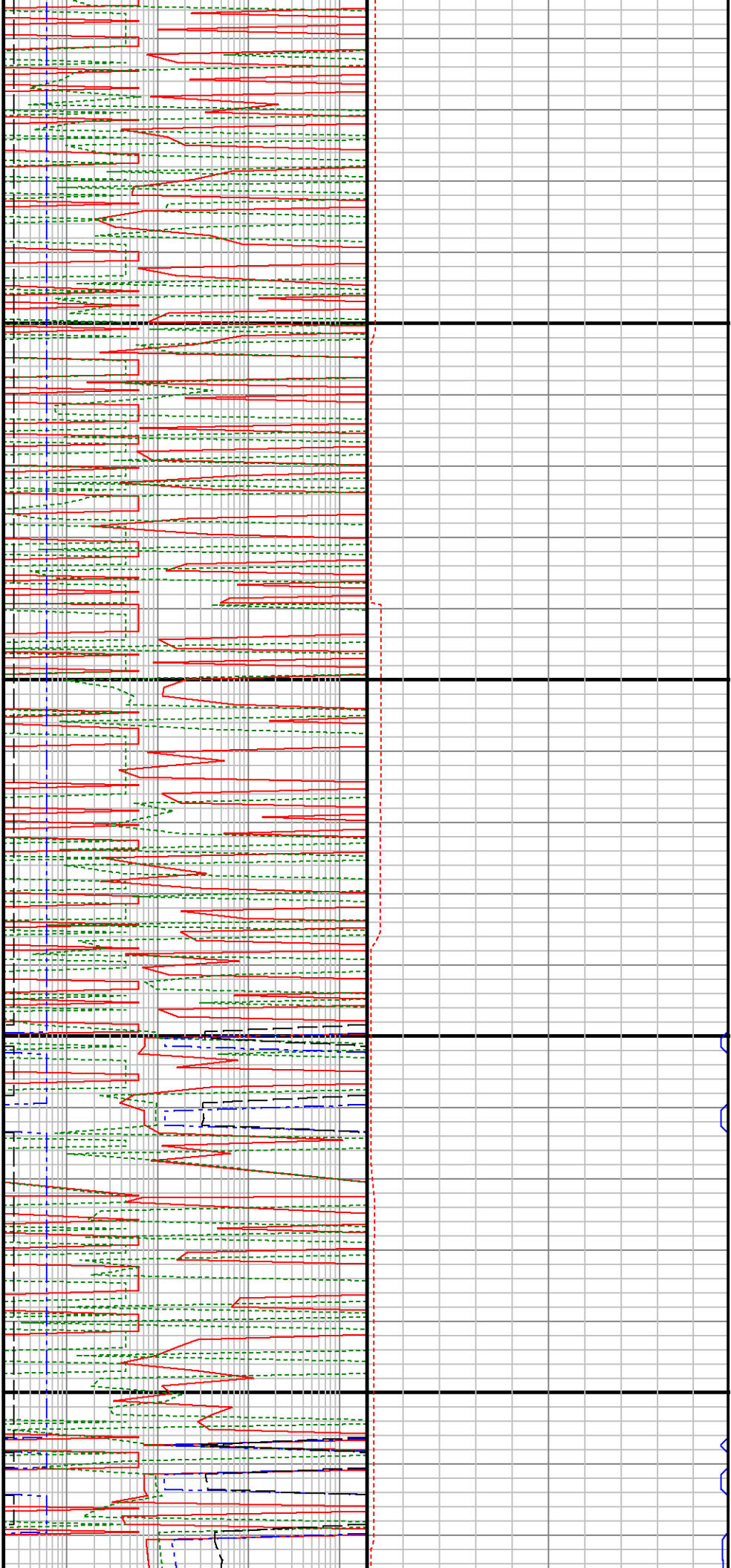
11800

11900



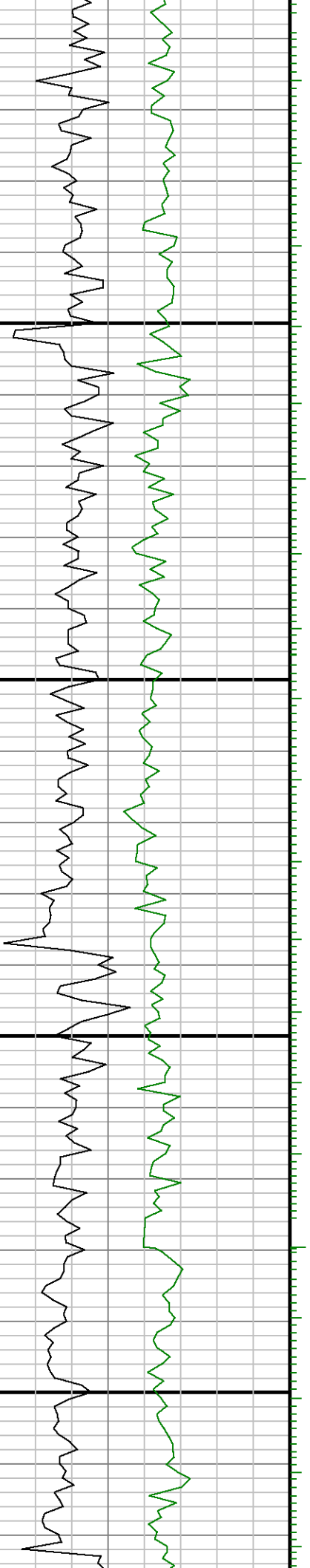


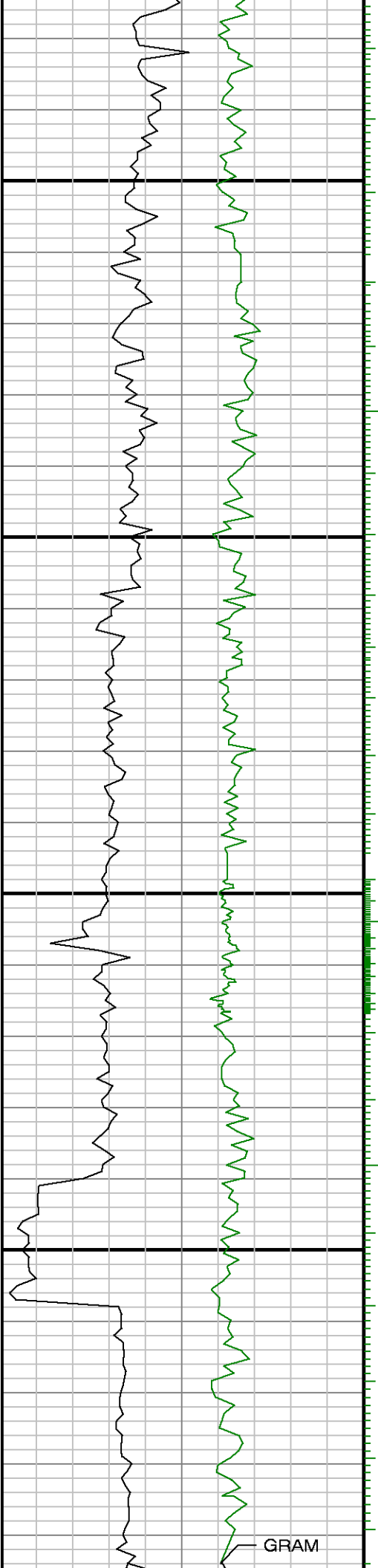




12500

12600





12700

12800

