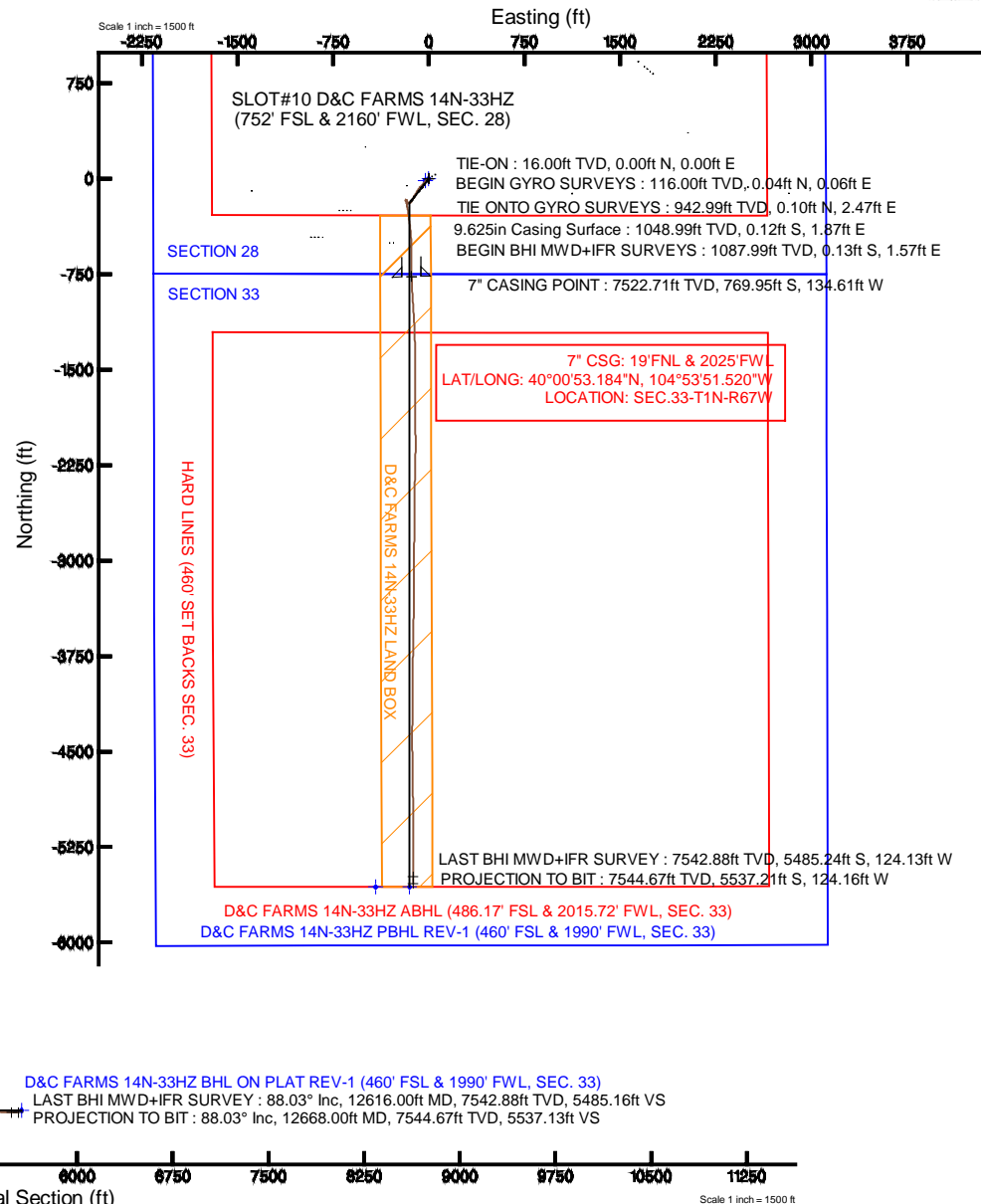
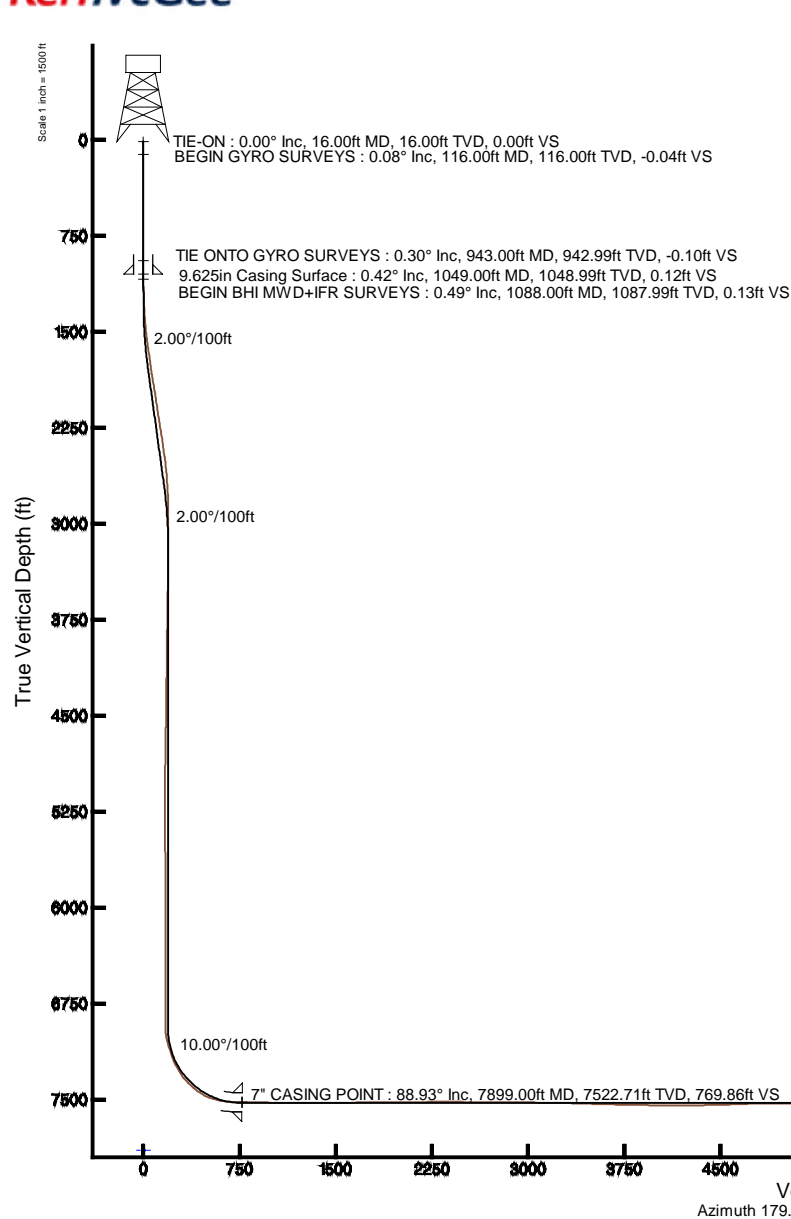


KERR-MCGEE OIL & GAS ONSHORE LP

Location: COLORADO Slot: SLOT#10 D&C FARMS 14N-33HZ (752' FSL & 2160' FWL, SEC. 28)
 Field: WELD COUNTY (KERR MCGEE) Well: D&C FARMS 14N-33HZ
 Facility: SEC.28-T1N-R67W Wellbore: D&C FARMS 14N-33HZ PWB

Plot reference wellpath is D&C FARMS 14N-33HZ (REV-A.0) PWP

True vertical depths are referenced to XTREME 24 (16' RKB) (RKB)	Grid System: NAD83 / Lambert Colorado SP, Northern Zone (501), US feet
Measured depths are referenced to XTREME 24 (16' RKB) (RKB)	North Reference: True north
XTREME 24 (16' RKB) (RKB) to Mean Sea Level: 5026 feet	Scale: True distance
Mean Sea Level to Mud line (At Slot: SLOT#10 D&C FARMS 14N-33HZ (752' FSL & 2160' FWL, SEC. 28)): 0 feet	Depths are in feet
Coordinates are in feet referenced to Slot	Created by: robale01 on 10/Oct/2013





Actual Wellpath Report

D&C FARMS 14N-33HZ AWP

Page 1 of 6



REFERENCE WELLPATH IDENTIFICATION

Operator	KERR-MCGEE OIL & GAS ONSHORE LP	Slot	SLOT#10 D&C FARMS 14N-33HZ (752' FSL & 2160' FWL, SEC
Area	COLORADO	Well	D&C FARMS 14N-33HZ
Field	WELD COUNTY (KERR MCGEE)	Wellbore	D&C FARMS 14N-33HZ AWB
Facility	SEC.28-T1N-R67W		

REPORT SETUP INFORMATION

Projection System	NAD83 / Lambert Colorado SP, Northern Zone (501), US feet	Software System	WellArchitect® 4.0.0
North Reference	True	User	Robiale01
Scale	0.999965	Report Generated	10/Oct/2013 at 12:37
Convergence at slot	n/a	Database/Source file	WA_ANADARKO/D_C_FARMS_14N-33HZ_AWB.xml

WELLPATH LOCATION

	Local coordinates		Grid coordinates		Geographic coordinates	
	North[ft]	East[ft]	Easting[US ft]	Northing[US ft]	Latitude	Longitude
Slot Location	1412451.62	2715406.19	3168843.58	1249572.23	40°01'00.793"N	104°53'49.790"W
Facility Reference Pt			316923.76	121463.46	36°32'36.656"N	114°37'52.006"W
Field Reference Pt			3197771.84	1268891.29	40°04'09.600"N	104°47'36.000"W

WELLPATH DATUM

Calculation method	Minimum curvature	XTREME 24 (16' RKB) (RKB) to Facility Vertical Datum	5026.00ft
Horizontal Reference Pt	Slot	XTREME 24 (16' RKB) (RKB) to Mean Sea Level	5026.00ft
Vertical Reference Pt	XTREME 24 (16' RKB) (RKB)	XTREME 24 (16' RKB) (RKB) to Mud Line at Slot (SLOT#10 D&C FARMS 14N-33HZ (752' FSL & 2160' FWL, SEC. 28))	5026.00ft
MD Reference Pt	XTREME 24 (16' RKB) (RKB)	Section Origin	N 0.00, E 0.00 ft
Field Vertical Reference	Mean Sea Level	Section Azimuth	181.28°

Actual Wellpath Report

D&C FARMS 14N-33HZ AWP

Page 2 of 6

REFERENCE WELLPATH IDENTIFICATION

Operator	KERR-MCGEE OIL & GAS ONSHORE LP	Slot	SLOT#10 D&C FARMS 14N-33HZ (752' FSL & 2160' FWL, SEC
Area	COLORADO	Well	D&C FARMS 14N-33HZ
Field	WELD COUNTY (KERR MCGEE)	Wellbore	D&C FARMS 14N-33HZ AWB
Facility	SEC.28-T1N-R67W		

WELLPATH DATA (92 stations) † = interpolated/extrapolated station

MD [ft]	Inclination [°]	Azimuth [°]	TVD [ft]	Vert Sect [ft]	North [ft]	East [ft]	Latitude	Longitude	DLS [°/100ft]	Comments
0.00†	0.000	57.920	0.00	0.00	0.00	0.00	40°01'00.793"N	104°53'49.790"W	0.00	
16.00	0.000	57.920	16.00	0.00	0.00	0.00	40°01'00.793"N	104°53'49.790"W	0.00	TIE-ON
116.00	0.080	57.920	116.00	-0.04	0.04	0.06	40°01'00.793"N	104°53'49.789"W	0.08	BEGIN GYRO SURVEYS
216.00	0.220	66.660	216.00	-0.16	0.15	0.29	40°01'00.794"N	104°53'49.786"W	0.14	
316.00	0.310	60.650	316.00	-0.37	0.36	0.71	40°01'00.797"N	104°53'49.781"W	0.09	
416.00	0.370	121.600	416.00	-0.35	0.32	1.22	40°01'00.796"N	104°53'49.774"W	0.35	
516.00	0.280	118.300	516.00	-0.08	0.04	1.71	40°01'00.793"N	104°53'49.768"W	0.09	
616.00	0.070	327.360	616.00	-0.02	-0.03	1.89	40°01'00.793"N	104°53'49.766"W	0.34	
716.00	0.250	39.170	715.99	-0.24	0.19	1.99	40°01'00.795"N	104°53'49.764"W	0.24	
816.00	0.320	97.850	815.99	-0.38	0.32	2.41	40°01'00.796"N	104°53'49.759"W	0.29	
916.00	0.190	228.660	915.99	-0.23	0.18	2.56	40°01'00.795"N	104°53'49.757"W	0.47	
943.00	0.300	229.540	942.99	-0.16	0.10	2.47	40°01'00.794"N	104°53'49.758"W	0.41	TIE ONTO GYRO SURVEYS
1088.00	0.490	271.200	1087.99	0.10	-0.13	1.57	40°01'00.792"N	104°53'49.770"W	0.23	BEGIN BHI MWD+IFR SURVEYS
1182.00	2.590	227.010	1181.95	1.58	-1.57	-0.39	40°01'00.777"N	104°53'49.795"W	2.41	
1276.00	4.950	243.920	1275.74	4.93	-4.80	-5.59	40°01'00.746"N	104°53'49.862"W	2.75	
1370.00	5.960	231.050	1369.32	9.94	-9.65	-13.03	40°01'00.698"N	104°53'49.957"W	1.68	
1464.00	8.000	226.130	1462.62	17.74	-17.26	-21.54	40°01'00.622"N	104°53'50.067"W	2.26	
1558.00	10.320	226.150	1555.42	28.34	-27.62	-32.33	40°01'00.520"N	104°53'50.205"W	2.47	
1652.00	10.240	217.920	1647.91	41.02	-40.05	-43.53	40°01'00.397"N	104°53'50.350"W	1.56	
1747.00	9.790	221.180	1741.46	53.99	-52.79	-54.04	40°01'00.271"N	104°53'50.485"W	0.76	
1841.00	11.630	217.790	1833.82	67.74	-66.29	-65.11	40°01'00.138"N	104°53'50.627"W	2.07	
1935.00	11.080	213.420	1925.99	83.00	-81.32	-75.89	40°00'59.989"N	104°53'50.765"W	1.09	
2030.00	10.400	212.700	2019.32	98.05	-96.16	-85.55	40°00'59.843"N	104°53'50.890"W	0.73	
2121.00	9.560	211.660	2108.94	111.58	-109.50	-93.96	40°00'59.711"N	104°53'50.998"W	0.94	
2212.00	10.890	212.720	2198.50	125.43	-123.16	-102.57	40°00'59.576"N	104°53'51.108"W	1.48	
2303.00	10.350	210.280	2287.94	139.92	-137.46	-111.34	40°00'59.435"N	104°53'51.221"W	0.77	
2395.00	9.850	210.210	2378.51	154.03	-151.39	-119.46	40°00'59.297"N	104°53'51.325"W	0.54	
2486.00	9.060	210.510	2468.27	167.10	-164.29	-127.02	40°00'59.169"N	104°53'51.423"W	0.87	
2576.00	7.750	219.210	2557.31	178.07	-175.10	-134.45	40°00'59.063"N	104°53'51.518"W	2.02	
2668.00	6.420	227.790	2648.61	186.50	-183.36	-142.18	40°00'58.981"N	104°53'51.617"W	1.84	
2759.00	5.030	233.570	2739.15	192.45	-189.15	-149.16	40°00'58.924"N	104°53'51.707"W	1.65	
2851.00	2.830	234.360	2830.93	196.28	-192.87	-154.25	40°00'58.887"N	104°53'51.773"W	2.39	
2942.00	0.680	238.440	2921.88	197.92	-194.46	-156.54	40°00'58.871"N	104°53'51.802"W	2.37	
3216.00	1.170	293.550	3195.85	197.74	-194.19	-160.49	40°00'58.874"N	104°53'51.853"W	0.35	
3674.00	1.380	316.480	3653.74	192.06	-188.33	-168.57	40°00'58.932"N	104°53'51.957"W	0.12	
4142.00	0.670	7.850	4121.67	185.34	-181.53	-172.08	40°00'58.999"N	104°53'52.002"W	0.23	
4610.00	1.100	315.810	4589.62	179.47	-175.60	-174.84	40°00'59.058"N	104°53'52.037"W	0.19	
5044.00	1.610	320.060	5023.50	171.97	-167.94	-181.66	40°00'59.133"N	104°53'52.125"W	0.12	
5130.00	0.890	280.560	5109.48	170.95	-166.89	-183.09	40°00'59.144"N	104°53'52.143"W	1.26	
5215.00	0.870	113.310	5194.47	171.09	-167.02	-183.15	40°00'59.142"N	104°53'52.144"W	2.06	
5556.00	1.350	121.900	5535.41	174.10	-170.17	-177.36	40°00'59.111"N	104°53'52.070"W	0.15	
5982.00	0.700	120.200	5961.34	177.92	-174.13	-170.85	40°00'59.072"N	104°53'51.986"W	0.15	
6408.00	0.570	285.520	6387.33	178.65	-174.87	-170.64	40°00'59.065"N	104°53'51.983"W	0.30	
6833.00	0.670	311.780	6812.31	176.52	-172.65	-174.53	40°00'59.087"N	104°53'52.033"W	0.07	
6919.00	0.830	317.520	6898.30	175.74	-171.86	-175.33	40°00'59.095"N	104°53'52.043"W	0.21	

Actual Wellpath Report

D&C FARMS 14N-33HZ AWP

Page 3 of 6

REFERENCE WELLPATH IDENTIFICATION

Operator	KERR-MCGEE OIL & GAS ONSHORE LP	Slot	SLOT#10 D&C FARMS 14N-33HZ (752' FSL & 2160' FWL, SEC
Area	COLORADO	Well	D&C FARMS 14N-33HZ
Field	WELD COUNTY (KERR MCGEE)	Wellbore	D&C FARMS 14N-33HZ AWB
Facility	SEC.28-T1N-R67W		

WELLPATH DATA (92 stations) † = interpolated/extrapolated station

MD [ft]	Inclination [°]	Azimuth [°]	TVD [ft]	Vert Sect [ft]	North [ft]	East [ft]	Latitude	Longitude	DLS [°/100ft]	Comments
6961.00	0.860	202.120	6940.30	175.82	-171.92	-175.65	40°00'59.094"N	104°53'52.048"W	3.40	
7004.00	6.880	179.420	6983.18	178.70	-174.80	-175.75	40°00'59.066"N	104°53'52.049"W	14.18	
7046.00	13.590	176.900	7024.49	186.14	-182.25	-175.45	40°00'58.992"N	104°53'52.045"W	16.01	
7089.00	15.200	169.200	7066.14	196.69	-192.84	-174.12	40°00'58.887"N	104°53'52.028"W	5.81	
7174.00	19.410	169.790	7147.27	221.44	-217.69	-169.53	40°00'58.642"N	104°53'51.969"W	4.96	
7260.00	25.480	169.700	7226.72	253.59	-249.99	-163.68	40°00'58.323"N	104°53'51.894"W	7.06	
7345.00	34.560	174.260	7300.25	295.53	-292.06	-157.99	40°00'57.907"N	104°53'51.821"W	11.01	
7430.00	44.460	172.030	7365.75	348.97	-345.66	-151.44	40°00'57.377"N	104°53'51.736"W	11.76	
7516.00	51.010	174.110	7423.56	411.93	-408.81	-143.82	40°00'56.753"N	104°53'51.638"W	7.82	
7601.00	61.980	176.820	7470.42	482.33	-479.35	-138.33	40°00'56.056"N	104°53'51.568"W	13.17	
7643.00	70.830	180.130	7487.22	520.73	-517.78	-137.35	40°00'55.676"N	104°53'51.555"W	22.27	
7686.00	75.430	180.890	7499.69	561.86	-558.92	-137.72	40°00'55.270"N	104°53'51.560"W	10.83	
7771.00	81.930	178.670	7516.37	645.13	-642.21	-137.38	40°00'54.446"N	104°53'51.556"W	8.06	
7814.00	87.750	179.750	7520.24	687.91	-685.02	-136.79	40°00'54.023"N	104°53'51.548"W	13.76	
7850.00	88.240	178.350	7521.50	723.86	-720.99	-136.19	40°00'53.668"N	104°53'51.540"W	4.12	
7899.00†	88.926	177.945	7522.71	772.77	-769.95	-134.61	40°00'53.184"N	104°53'51.520"W	1.63	7" CASING POINT
7960.00	89.780	177.440	7523.40	833.65	-830.89	-132.15	40°00'52.582"N	104°53'51.488"W	1.63	
8216.00	88.690	176.000	7526.82	1088.80	-1086.44	-117.51	40°00'50.056"N	104°53'51.300"W	0.71	
8301.00	89.530	177.160	7528.14	1173.50	-1171.28	-112.44	40°00'49.218"N	104°53'51.235"W	1.68	
8386.00	90.460	179.120	7528.14	1258.37	-1256.23	-109.68	40°00'48.379"N	104°53'51.200"W	2.55	
8557.00	90.550	179.320	7526.64	1429.25	-1427.20	-107.35	40°00'46.689"N	104°53'51.170"W	0.13	
8642.00	90.460	179.580	7525.89	1514.20	-1512.20	-106.54	40°00'45.849"N	104°53'51.159"W	0.32	
8897.00	90.240	180.230	7524.33	1769.12	-1767.19	-106.11	40°00'43.329"N	104°53'51.154"W	0.27	
9153.00	90.370	178.890	7522.97	2025.00	-2023.17	-104.15	40°00'40.799"N	104°53'51.128"W	0.53	
9238.00	91.300	180.310	7521.73	2109.95	-2108.16	-103.55	40°00'39.960"N	104°53'51.121"W	2.00	
9323.00	90.790	181.520	7520.18	2194.93	-2193.13	-104.91	40°00'39.120"N	104°53'51.138"W	1.54	
9579.00	89.500	181.020	7519.53	2450.93	-2449.06	-110.59	40°00'36.591"N	104°53'51.211"W	0.54	
9749.00	89.720	180.600	7520.69	2620.92	-2619.04	-112.99	40°00'34.911"N	104°53'51.242"W	0.28	
9919.00	89.440	179.860	7521.93	2790.88	-2789.03	-113.67	40°00'33.231"N	104°53'51.251"W	0.47	
10005.00	89.530	181.300	7522.71	2876.87	-2875.02	-114.54	40°00'32.381"N	104°53'51.262"W	1.68	
10261.00	89.070	179.220	7525.83	3132.79	-3130.99	-115.70	40°00'29.852"N	104°53'51.277"W	0.83	
10346.00	89.410	180.290	7526.96	3217.75	-3215.98	-115.34	40°00'29.012"N	104°53'51.272"W	1.32	
10431.00	88.420	180.950	7528.57	3302.73	-3300.96	-116.26	40°00'28.172"N	104°53'51.284"W	1.40	
10602.00	87.800	181.150	7534.21	3473.64	-3471.83	-119.39	40°00'26.483"N	104°53'51.324"W	0.38	
10687.00	88.580	180.870	7536.90	3558.59	-3556.78	-120.89	40°00'25.644"N	104°53'51.344"W	0.97	
10857.00	88.850	180.980	7540.71	3728.55	-3726.71	-123.63	40°00'23.965"N	104°53'51.379"W	0.17	
11027.00	88.890	180.170	7544.06	3898.50	-3896.67	-125.34	40°00'22.285"N	104°53'51.401"W	0.48	
11282.00	89.900	180.880	7546.75	4153.46	-4151.64	-127.67	40°00'19.765"N	104°53'51.431"W	0.48	
11538.00	91.200	179.940	7544.30	4409.41	-4407.61	-129.51	40°00'17.236"N	104°53'51.454"W	0.63	
11794.00	92.290	179.340	7536.50	4665.18	-4663.48	-127.90	40°00'14.707"N	104°53'51.434"W	0.49	
11879.00	91.360	178.530	7533.79	4750.06	-4748.42	-126.32	40°00'13.868"N	104°53'51.413"W	1.45	
11964.00	90.180	179.100	7532.65	4834.97	-4833.40	-124.56	40°00'13.028"N	104°53'51.391"W	1.54	
12134.00	90.150	179.720	7532.16	5004.88	-5003.39	-122.81	40°00'11.348"N	104°53'51.368"W	0.37	
12220.00	89.230	180.350	7532.63	5090.86	-5089.38	-122.86	40°00'10.498"N	104°53'51.369"W	1.30	
12475.00	88.230	180.130	7538.28	5345.75	-5344.31	-123.93	40°00'07.979"N	104°53'51.383"W	0.40	

REFERENCE WELLPATH IDENTIFICATION

Operator	KERR-MCGEE OIL & GAS ONSHORE LP	Slot	SLOT#10 D&C FARMS 14N-33HZ (752' FSL & 2160' FWL, SEC
Area	COLORADO	Well	D&C FARMS 14N-33HZ
Field	WELD COUNTY (KERR MCGEE)	Wellbore	D&C FARMS 14N-33HZ AWB
Facility	SEC.28-T1N-R67W		

WELLPATH DATA (92 stations)

MD [ft]	Inclination [°]	Azimuth [°]	TVD [ft]	Vert Sect [ft]	North [ft]	East [ft]	Latitude	Longitude	DLS [°/100ft]	Comments
12616.00	88.030	180.030	7542.88	5486.64	-5485.24	-124.13	40°00'06.586"N	104°53'51.385"W	0.16	LAST BHI MWD+IFR SURVEY
12668.00	88.030	180.030	7544.67	5538.60	-5537.21	-124.16	40°00'06.073"N	104°53'51.385"W	0.00	PROJECTION TO BIT

HOLE & CASING SECTIONS - Ref Wellbore: D&C FARMS 14N-33HZ AWB Ref Wellpath: D&C FARMS 14N-33HZ AWP

String/Diameter	Start MD [ft]	End MD [ft]	Interval [ft]	Start TVD [ft]	End TVD [ft]	Start N/S [ft]	Start E/W [ft]	End N/S [ft]	End E/W [ft]
13.5in Open Hole	16.00	1049.00	1033.00	16.00	1048.99	0.00	0.00	-0.12	1.87
9.625in Casing Surface	16.00	1049.00	1033.00	16.00	1048.99	0.00	0.00	-0.12	1.87
8.75in Open Hole	1049.00	7909.00	6860.00	1048.99	7522.88	-0.12	1.87	-779.94	-134.24
7in Casing Intermediate	16.00	7898.00	7882.00	16.00	7522.69	0.00	0.00	-768.95	-134.65
6.125in Open Hole	7909.00	12667.00	4758.00	7522.88	7544.63	-779.94	-134.24	-5536.21	-124.16

TARGETS

Name	MD [ft]	TVD [ft]	North [ft]	East [ft]	Grid East [US ft]	Grid North [US ft]	Latitude	Longitude	Shape
D&C FARMS PAD HARD LINES (460' SET BACKS SEC. 33)		5026.00	-15.68	-25.52	3168818.17	1249556.38	40°01'00.638"N	104°53'50.118"W	polygon
D&C FARMS PAD HARD LINES (460' SET BACKS, SEC. 28)		5026.00	-15.68	-25.52	3168818.17	1249556.38	40°01'00.638"N	104°53'50.118"W	polygon
D&C FARMS PAD SECTION LINES (SEC. 28)		5026.00	-15.68	-25.52	3168818.17	1249556.38	40°01'00.638"N	104°53'50.118"W	polygon
D&C FARMS PAD SECTION LINES (SEC. 33)		5026.00	-15.68	-25.52	3168818.17	1249556.38	40°01'00.638"N	104°53'50.118"W	polygon
D&C FARMS 14N-33HZ BHL ON PLAT REV-1 (460' FSL & 1990' FWL, SEC. 33)		7527.00	-5563.38	-149.88	3168731.53	1244008.17	40°00'05.814"N	104°53'51.716"W	point
D&C FARMS 14C-33HZ BHL ON PLAT (460' FSL & 1724' FWL, SEC. 33) REV-1		7823.00	-5563.78	-416.03	3168465.39	1244005.96	40°00'05.810"N	104°53'55.136"W	point
D&C FARMS 14N-33HZ LAND BOX		7900.00	0.00	0.00	3168843.58	1249572.23	40°01'00.793"N	104°53'49.790"W	polygon

REFERENCE WELLPATH IDENTIFICATION

Operator	KERR-MCGEE OIL & GAS ONSHORE LP	Slot	SLOT#10 D&C FARMS 14N-33HZ (752' FSL & 2160' FWL, SEC
Area	COLORADO	Well	D&C FARMS 14N-33HZ
Field	WELD COUNTY (KERR MCGEE)	Wellbore	D&C FARMS 14N-33HZ AWB
Facility	SEC.28-T1N-R67W		

WELLPATH COMPOSITION - Ref Wellbore: D&C FARMS 14N-33HZ AWB Ref Wellpath: D&C FARMS 14N-33HZ AWP

Start MD [ft]	End MD [ft]	Positional Uncertainty Model	Log Name/Comment	Wellbore
16.00	943.00	Generic gyro - continuous (Standard)	MS GYRODATA SURVEYS <116-943>	D&C FARMS 14N-33HZ AWB
943.00	7850.00	NaviTrak (MAGCORR,IFR)	BHI NAVITRAK MWD+IFR 8 3/4" <1088-7850>	D&C FARMS 14N-33HZ AWB
7850.00	12616.00	NaviTrak (MAGCORR,IFR)	BHI NAVITRAK MWD+IFR 6 1/8" <7960-12616>	D&C FARMS 14N-33HZ AWB
12616.00	12668.00	Blind Drilling (std)	Projection to bit	D&C FARMS 14N-33HZ AWB

REFERENCE WELLPATH IDENTIFICATION

Operator	KERR-MCGEE OIL & GAS ONSHORE LP	Slot	SLOT#10 D&C FARMS 14N-33HZ (752' FSL & 2160' FWL, SEC
Area	COLORADO	Well	D&C FARMS 14N-33HZ
Field	WELD COUNTY (KERR MCGEE)	Wellbore	D&C FARMS 14N-33HZ AWB
Facility	SEC.28-T1N-R67W		

WELLPATH COMMENTS

MD [ft]	Inclination [°]	Azimuth [°]	TVD [ft]	Comment
16.00	0.000	57.920	16.00	TIE-ON
116.00	0.080	57.920	116.00	BEGIN GYRO SURVEYS
943.00	0.300	229.540	942.99	TIE ONTO GYRO SURVEYS
1088.00	0.490	271.200	1087.99	BEGIN BHI MWD+IFR SURVEYS
7899.00	88.926	177.945	7522.71	7" CASING POINT
12616.00	88.030	180.030	7542.88	LAST BHI MWD+IFR SURVEY
12668.00	88.030	180.030	7544.67	PROJECTION TO BIT