



Scale 1:240 (5"=100') Imperial
Measured Depth Log

Well Name: D&C Farms 14N-33HZ
 Location: Weld County, CO.
 License Number: 051233789400
 Spud Date: 09/30/13
 Surface Coordinates: 767' FSL & 2186' FWL, SEC. 28, T1N-R67W
 Region: Weld County
 Drilling Completed:
 Bottom Hole Coordinates: 460' FSL & 1990' FWL, SEC. 33, T1N-R67W
 Ground Elevation (ft): 5026' K.B. Elevation (ft): 5039'
 Logged Interval (ft): 6950' To: 7910' Total Depth (ft):
 Formation: Niobrara B
 Type of Drilling Fluid: Water Based Mud

Printed by MUD.LOG from WellSight Systems 1-800-447-1534 www.WellSight.com

OPERATOR

Company: Anadarko Petroleum Corporation
 Address: Granite Tower
 1099 18th Street, #1800
 Denver, CO 80202

GEOLOGIST

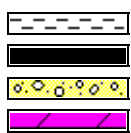
Name: Scott Crozier / Ben Thompson
 Company: Great Divide Consulting, Inc
 Address: P.O. Box 630263
 Highlands Ranch, CO 80163

Comments

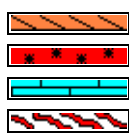
ROCK TYPES



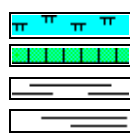
Anhy
Bent
Brec
Cht



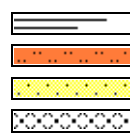
Clyst
Coal
Congl
Dol



Gyp
Igne
Lmst
Meta



Mrlst
Salt
Shale
Shcol



Shgy
Sltst
Ss
Till

ACCESSORIES

MINERAL

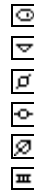
Anhy
Arggrn
Arg
Bent
Bit
Brecfrag
Calc
Carb
Chtdk
Chltt
Dol
Feldspar
Ferrpel
Ferr
Glau



Gyp
Hvymin
Kaol
Marl
Minxl
Nodule
Phos
Pyr
Salt
Sandy
Silt
Sil
Sulphur
Tuff

FOSSIL

Algae
Amph
Belm
Bioclst
Brach
Bryozoa
Cephal
Coral
Crin
Echin
Fish
Foram
Fossil
Gastro
Oolite



Ostra
Pelec
Pellet
Pisolite
Plant
Strom

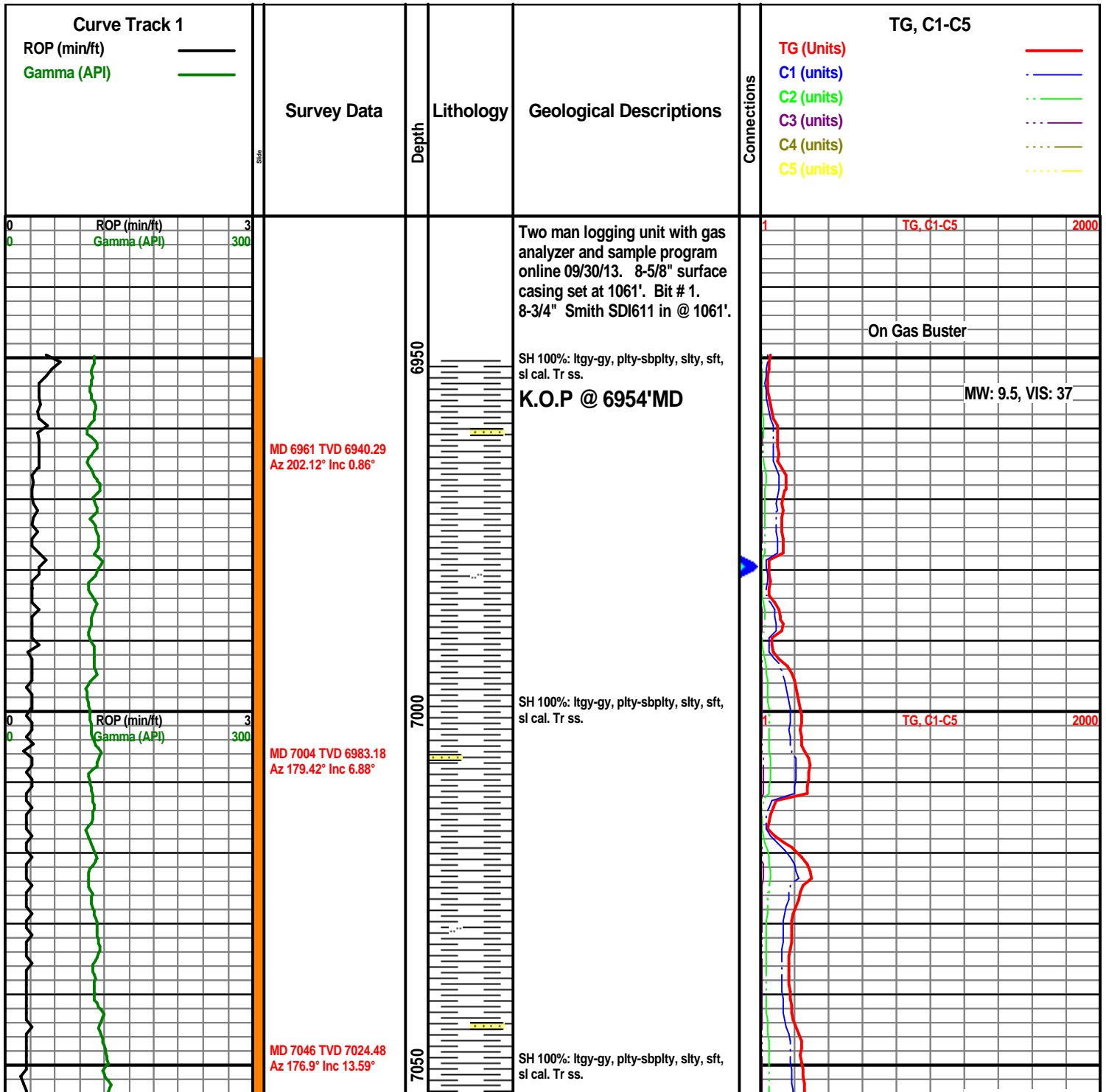
STRINGER

Anhy
Arg
Bent
Coal
Dol
Gyp
Ls
Mrst

Sltstrg
Ssstrg

TEXTURE

Boundst
Chalky
Cryxln
Earthy
Finexln
Grainst
Lithogr
Microxln
Mudst
Packst
Wackest



MW: 9.5, VIS: 37

MD 7089 TVD 7066.14
Az 169.2° Inc 15.2°

7100

SH 100%: ltgy-gy, plty-sbplty, slty, sft,
sl cal. Tr Bent.

7150

SH 100%: ltgy-gy, plty-sbplty, slty, sft,
sl cal. Tr Bent.

MW: 9.5, VIS: 37

MD 7174 TVD 7147.27
Az 169.79° Inc 19.41°

7200

SH 100%: ltgy-gy, plty-sbplty, slty, sft,
sl cal. Tr Bent.

TG, C1-C5

2000

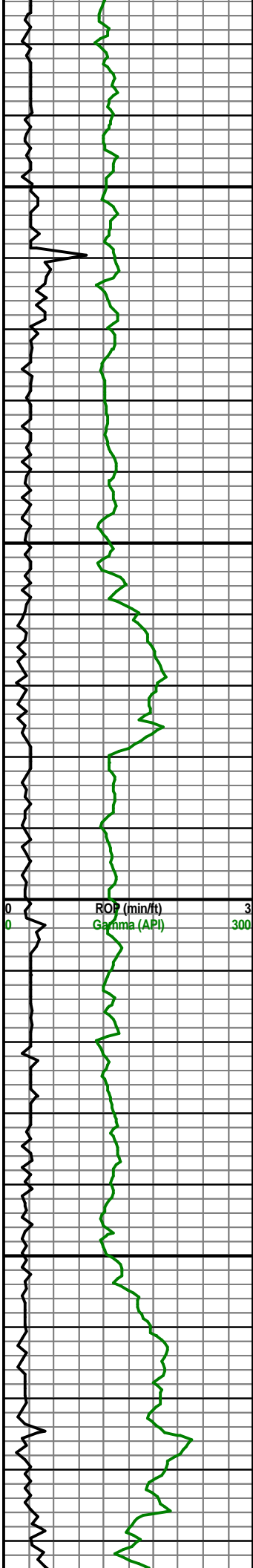
7250

SH 100%: ltgy-gy, plty-sbplty, slty, sft,
sl cal. Tr Bent.

MW: 9.5, VIS: 37

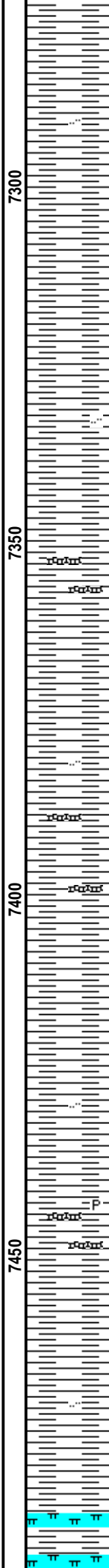
MD 7260 TVD 7226.72
Az 169.7° Inc 25.48°

ROP (min/ft) 3
Gamma (API) 300



MD 7345 TVD 7300.25
Az 174.26° Inc 34.56°

MD 7430 TVD 7365.75
Az 172.03° Inc 44.46°



SH 100%: ltgy-gy, plty-sbplty, slty, sft,
sl cal.

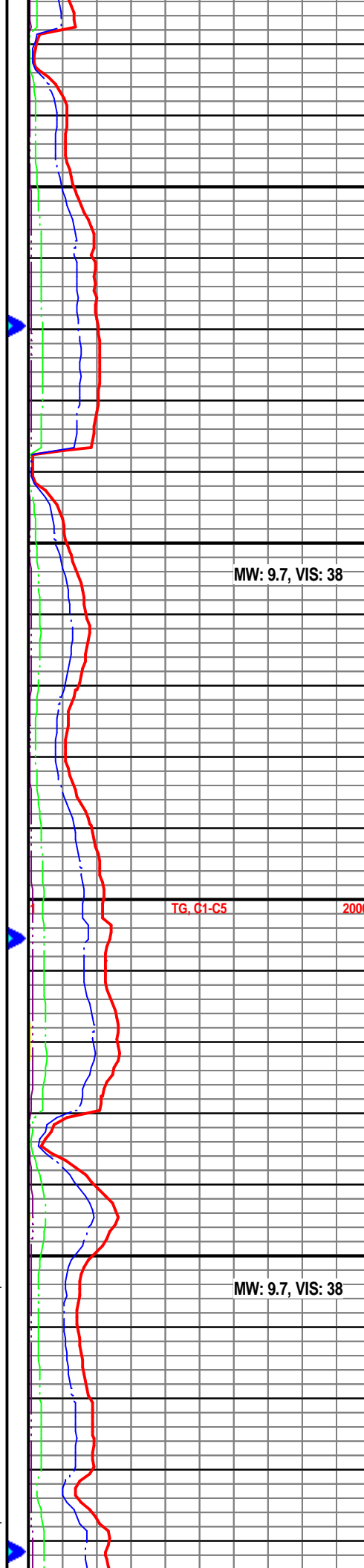
SH 100%: ltgy-gy, plty-sbplty, slty, sft,
sl cal. Tr Bent.

SH 100%: ltgy-gy, plty-sbplty, slty, sft,
sl cal. Tr Bent.

Sharon Spgs Top @
7454' MD / 7384' TVD

SH 100%: ltgy-gy, plty-sbplty, slty, sft,
sl cal. Tr Bent. Tr Pyt.

Niobrara A Top @
7486' MD, 7404' TVD

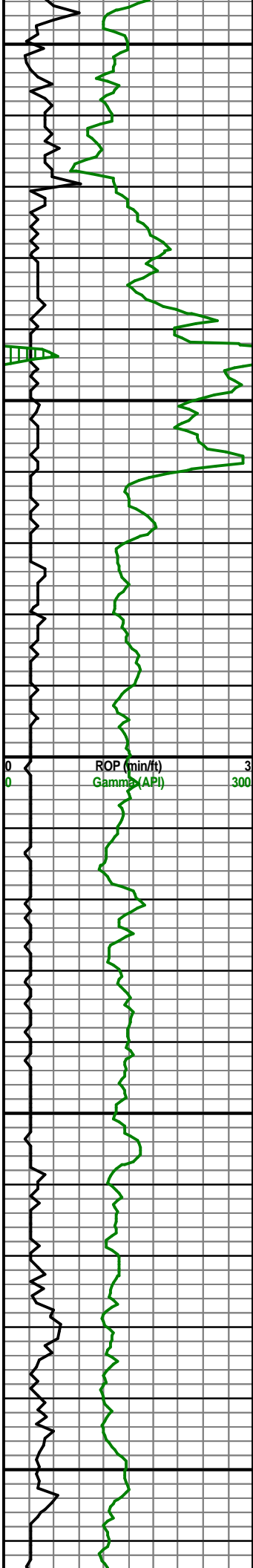


MW: 9.7, VIS: 38

TG, C1-C5

2000

MW: 9.7, VIS: 38

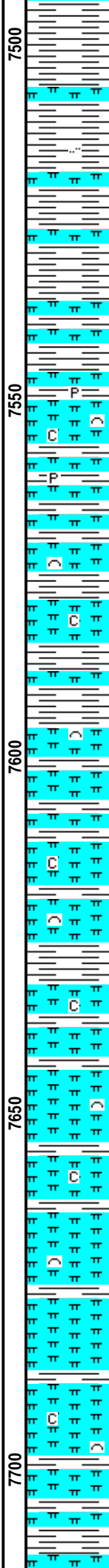


MD 7516 TVD 7423.56
Az 174.11° Inc 51.01°

MD 7601 TVD 7470.42
Az 176.82° Inc 61.98°

MD 7643 TVD 7487.22
Az 180.13° Inc 70.83°

MD 7686 TVD 7499.69
Az 180.89° Inc 75.43°



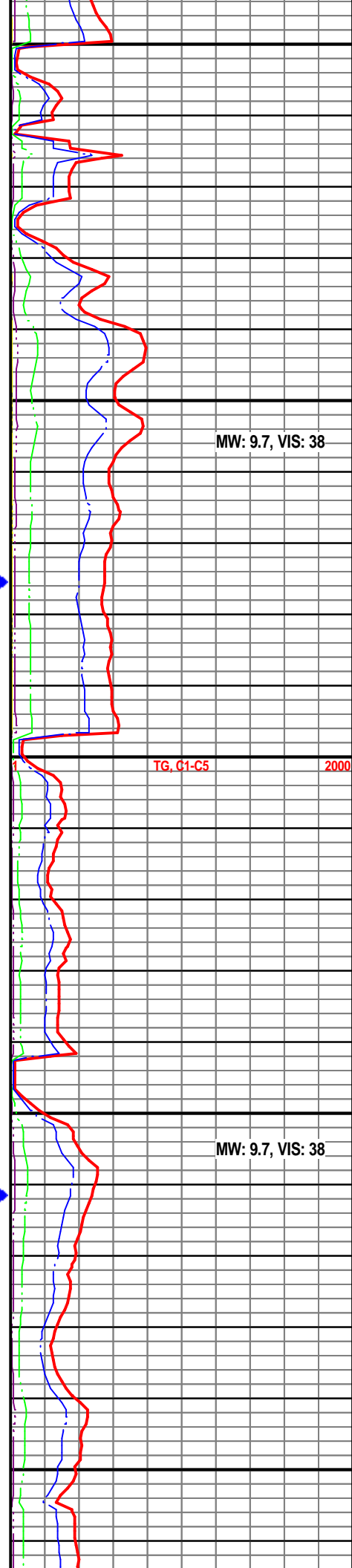
SH 90%: ltgy-gy, pity-sbply, slty, sft, sl
cal. Chalky Mrlst 10%: lt-md gr, v calc,
intbd biocl, frm, sbply, no sfl, slw str
wh-ylw cut. Tr Pyt.

Chalky Mrlst 85%: lt-md gr, v calc, intbd
biocl, frm, sbply, no sfl, slw str wh-ylw
cut. SH 15%: gy-dkgy, sft,
sbply-sbbly, slty, grty, vs cal. Tr pyt.

Chalky Mrlst 85%: lt-md gr, v calc, intbd
biocl, frm, sbply, no sfl, slw str wh-ylw
cut. SH 15%: gy-dkgy, sft,
sbply-sbbly, slty, grty, vs cal.

Chalky Mrlst 85%: lt-md gr, v calc, intbd
biocl, frm, sbply, no sfl, slw str wh-ylw
cut. SH 15%: gy-dkgy, sft,
sbply-sbbly, slty, grty, vs cal.

Chalky Mrlst 90%: lt-md gr, v calc, intbd
biocl, frm, sbply, no sfl, slw str wh-ylw
cut. SH 10%: gy-dkgy, sft,
sbply-sbbly, slty, grty, vs cal.



MW: 9.7, VIS: 38

TG, C1-C5 2000

MW: 9.7, VIS: 38

