

**ANADARKO PETROLEUM CORP - EBUS
DO NOT MAIL - PO BOX 4995
THE WOODLANDS, Texas**

D&C Farms 34N-33HZ

MAJORS 42

Post Job Summary **Cement Surface Casing**

Prepared for:
Date Prepared: 9/27/2013
Version: 1

Service Supervisor: OTERI, VAUGHN

Submitted by: FINNEY, SEAN

HALLIBURTON

HALLIBURTON

Wellbore Geometry

Job Tubulars					MD		Shoe Joint Length ft
Type	Description	Size in	ID in	Wt lbm/ft	Top ft	Bottom ft	
Casing	9 5/8" Surface Casing	9.63	8.921	36.00	0.00	1,020.00	42.00
Open Hole Section	13 1/2" Open Hole Section		13.500		0.00	1,020.00	0.00

HALLIBURTON

Pumping Schedule

Stage /Plug #	Fluid #	Fluid Type	Fluid Name	Surface Density lbm/gal	Avg Rate bbl/min	Surface Volume	Downhole Volume
1	1	Spacer	Fresh Water Spacer	8.33	3.00	10.0 bbl	10.0 bbl
1	2	Spacer	Mud Flush	8.40	3.00	12.0 bbl	12.0 bbl
1	3	Cement Slurry	SwiftCem B2	14.20	5.00	384.0 sacks	384.0 sacks

Fluids Pumped

Stage/Plug # 1 Fluid 1: Fresh Water Spacer
DUMMY MUD / FLUSH / SPACER SBC MATERIAL

Fluid Density: 8.33 lbm/gal
Fluid Volume: 10.00 bbl
Pump Rate: 3.00 bbl/min

Stage/Plug # 1 Fluid 2: Mud Flush
DUMMY MUD / FLUSH / SPACER SBC MATERIAL
3.33 lbm/bbl Mud Flush III
42 gal/bbl Mud Flush III

Fluid Density: 8.40 lbm/gal
Fluid Volume: 12.00 bbl
Pump Rate: 3.00 bbl/min

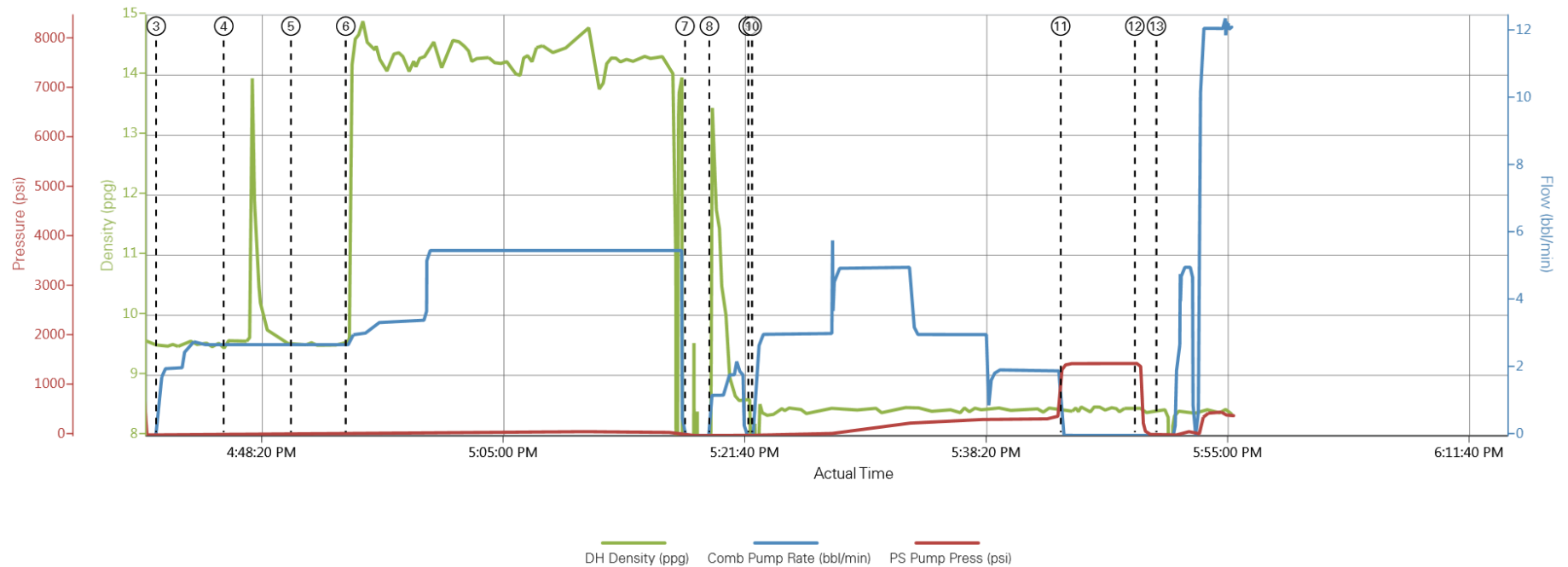
Stage/Plug # 1 Fluid 3: SwiftCem B2
SWIFTCM (TM) SYSTEM

Fluid Weight: 14.20 lbm/gal
Slurry Yield: 1.54 ft³/sack
Total Mixing Fluid: 7.66 Gal
Surface Volume: 384.0 sacks
Sacks: 384.0 sacks
Calculated Fill: 900.00 ft
Calculated Top of Fluid: 0.00 ft

HALLIBURTON

Data Acquisition

ANADARKO D&C FARMS 34N-33HZ



- | | | |
|-----------------|---------------------|-------------|
| ① Start Job | ⑥ Pump Cement | ⑪ Bump Plug |
| ② Test Lines | ⑦ Shutdown | ⑫ Other |
| ③ Pump Spacer 1 | ⑧ Clean Lines | ⑬ End Job |
| ④ Pump Spacer 2 | ⑨ Drop Bottom Plug | |
| ⑤ Pump Spacer 1 | ⑩ Pump Displacement | |

▲ Halliburton | iCem Service®

Created: 2013-09-07 16:16:07 , Version: 1.4.96

Edit

HALLIBURTON

Service Supervisor Reports

Job Log

Date/Time	Chart #	Activity Code	Pump Rate	Cum Vol	Pump		Pressure (psig)		Comments
09/07/2013 16:35		Start Job							PRELOADED PLUG IN HEAD WITNESSED BY COMPANY REP
09/07/2013 16:38		Test Lines						516319.7	PRESSURE TESTED PUMPS AND LINES FOUND NO LEAKS PRESSURE HELD GOOD
09/07/2013 16:40		Pump Spacer 1	3.00	10.00				4626.5	PUMP FRESH WATER SPACER FROM FRAC TANK
09/07/2013 16:44		Pump Spacer 2	3.00	20.00				5061.6	MIXED MUD FLUSH WITH FRESH WATER
09/07/2013 16:50		Pump Spacer 1	3.00	10.00				5496.7	PUMP FRESH WATER SPACER FROM FRAC TANK
09/07/2013 16:54		Pump Cement	5.00	105				11298.3	MIXED 14.2PPG SWFTCEM WITH FRESH WATER
09/07/2013 17:18		Shutdown							
09/07/2013 17:18		Drop Top Plug							RELEASE PLUG WITNESSED BY COMPANY REP
09/07/2013 17:20		Pump Displacement	4.00	471.67				36244.7	PUMP FRESH WATER
09/07/2013 17:42		Bump Plug						188534.4	BUMP PLUG 500 OVER FINAL PRESSURE
09/07/2013 17:47		Check Floats							RELEASE PRESSURE BACK TO PUMP TRUCK FLOAT HELD
09/07/2013 17:48		End Job							

The Road to Excellence Starts with Safety

Sold To #: 300466	Ship To #: 3099758	Quote #:	Sales Order #: 900728367
Customer: ANADARKO PETROLEUM CORP - EBUS		Customer Rep: Hersh, Larry	
Well Name: D&C Farms		Well #: 34N-33HZ	API/UWI #: 05-123-37891
Field: WATTENBERG	City (SAP): DACONO	County/Parish: Weld	State: Colorado
Lat: N 40.162 deg. OR N 40 deg. 9 min. 43.938 secs.		Long: W 104.9 deg. OR W -105 deg. 6 min. 1.202 secs.	
Contractor: MAJORS		Rig/Platform Name/Num: Majors 42	
Job Purpose: Cement Surface Casing			
Well Type: Development Well		Job Type: Cement Surface Casing	
Sales Person: PLIENESS, RYAN		Srvc Supervisor: OTERI, VAUGHN	MBU ID Emp #: 443828

Job Personnel

HES Emp Name	Exp Hrs	Emp #	HES Emp Name	Exp Hrs	Emp #	HES Emp Name	Exp Hrs	Emp #
MILLS, CHUCK	0.0	0	NIELSON, BRANDON K	0.0	479703	OTERI, VAUGHN Steeves	0.0	443828
WHIPPLE, WESLEY Morgan	0.0	518611						

Equipment

HES Unit #	Distance-1 way	HES Unit #	Distance-1 way	HES Unit #	Distance-1 way	HES Unit #	Distance-1 way
11667703C	20 mile						

Job Hours

Date	On Location Hours	Operating Hours	Date	On Location Hours	Operating Hours	Date	On Location Hours	Operating Hours

TOTAL Total is the sum of each column separately

Job

Formation Name	Formation Depth (MD)	Top	Bottom	Form Type	Job depth MD	Job Depth TVD	Water Depth	Perforation Depth (MD)	From	To
				BHST	1020. ft	1020. ft				
						5. ft				

Job Times

Called Out	Date	Time	Time Zone
On Location	07 - Sep - 2013	10:00	MST
Job Started	07 - Sep - 2013	13:30	MST
Job Completed	07 - Sep - 2013	16:35	MST
Departed Loc	07 - Sep - 2013	17:47	MST
	07 - Sep - 2013	19:00	MST

Well Data

Description	New / Used	Max pressure psig	Size in	ID in	Weight lbm/ft	Thread	Grade	Top MD ft	Bottom MD ft	Top TVD ft	Bottom TVD ft
13 1/2" Open Hole Section				13.5				.	1020.		
9 5/8" Surface Casing	Unknown		9.625	8.921	36.		J-55	.	1020.		

Sales/Rental/3rd Party (HES)

Description	Qty	Qty uom	Depth	Supplier
CMT CASING EQUIPMENT BOM	1	JOB		
MILEAGE FOR CEMENTING CREW,ZI	30	MI		
ZI FUEL SURCHG-CARS/PICKUPS<1 1/2TON	30	MI		
Description	Qty	Qty uom	Depth	Supplier

KIT,HALL WELD-A					1	EA			
CNTRLZR, 9 5/8"x13 3/4',#500-0963-1375					7	EA			
BASKET - CEMENT - 9-5/8 CSG X 12-1/4					1	EA			
PLUG,CMTG,TOP,9 5/8,HWE,8.16 MIN/9.06 MA					1	EA			
COLLAR-STOP-9 5/8"-FRICTION-HINGED					2	EA			
Fluid Data									
Stage/Plug #: 1									
Fluid #	Stage Type	Fluid Name	Qty	Qty uom	Mixing Density lbm/gal	Yield ft3/sk	Mix Fluid Gal/sk	Rate bbl/min	Total Mix Fluid Gal/sk
1	Fresh Water Spacer		10.00	bbl	8.33	.0	.0	3.0	
2	Mud Flush		12.00	bbl	8.4	.0	.0	3.0	
3.33 lbm/bbl		MUD FLUSH III, 40 LB SACK (101633304)							
42 gal/bbl		MUD FLUSH III - SBM (528788)							
3	SwiftCem B2	SWIFTCM (TM) SYSTEM (452990)	384.0	sacks	14.2	1.54	7.66	5.0	7.66
7.66 Gal		FRESH WATER							
Calculated Values		Pressures		Volumes					
Displacement		Shut In: Instant		Lost Returns		Cement Slurry		Pad	
Top Of Cement		5 Min		Cement Returns		Actual Displacement		Treatment	
Frac Gradient		15 Min		Spacers		Load and Breakdown		Total Job	
Rates									
Circulating		Mixing		Displacement		Avg. Job			
Cement Left In Pipe	Amount	42 ft	Reason	Shoe Joint					
Frac Ring # 1 @	ID	Frac ring # 2 @	ID	Frac Ring # 3 @	ID	Frac Ring # 4 @	ID		
The Information Stated Herein Is Correct				Customer Representative Signature					

