

WHITING OIL & GAS CORP.

R	57	W
<hr/>		
R	58	W

1917 BLM Brass Cap,
Flush W/ Ground
Lat: 40.817025°
Long: 103.784622°

589°44'58"E - 2560.47' (Meas.)

S89°50'21"E - 2664.91' (Meas.)

1917 BLM Brass
Cap, 1.0' High
Lat: 40.817086°
Long: 103.803497°

2011 Priv. Alum. Cap.
0.2' High, PLS #28285
Lat: 40.817050
Long: 103.794247

LOT 1

10

LOT 2

HORSETAIL #30F-1941
Elev. Ungraded Ground = 4783'

30

2012 Priv. Alum. Cap.
Flush W/ Ground
Lat: 40.809803°
Long: 103.803386°

1917 Brass Cap,
0.8' High
Lat: 40.809725°
Long: 103.784528°

LOT 3

THIS WELL IS LOCATED IN THE NE 1/4 NW 1/4 OF SECTION 19, T10N, R57W, 6th P.M. AT 100' FNL 1320' FWL. IT BEARS N04°39'29"W 7548.82' FROM THE PROPOSED WELL HEAD.

LOT 4

N89°17'46"W - 2514.76' (Meas.)

N89°42'21"W - 2660.62' (Mags)

2010 Priv. Alum. Cap.
Flush W/ Ground
Lat: 40.802556°
Long: 103.803122°

1917 Brass Cap,
0.4' High
Lat: 40.802425°
Long: 103.784433°

LEGEND:

$\mid = 90^\circ$ SYMBOL

● = PROPOSED WELL HEAD.

▲ = SECTION CORNERS LOCATED.

PDOP = 1.8

NAD 83 (SURFACE LOCATION)
LATITUDE = 40°48'38.46" (40.810683)
LONGITUDE = 103°47'48.05" (103.796681)

NAD 27 (SURFACE LOCATION)
LATITUDE = 40°48'38.51" (40.810697)
LONGITUDE = 103°47'46.24" (103.796178)

SCALE

DATE SURVEYED:

REFERENCES

G.L.O.

FILE

COL D

WHITING OIL & GAS CORP.

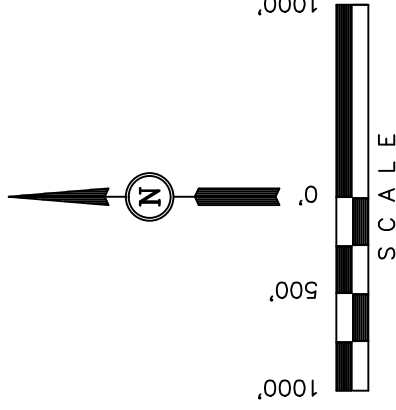
Well location, HORSETAIL #30F-1941 (SURFACE LOCATION), located as shown in the SE 1/4 NW 1/4 of Section 30, T10N, R57W, 6th P.M., Weld County, Colorado.

BASIS OF ELEVATION

SPOT ELEVATION LOCATED AT THE NORTHEAST CORNER OF SECTION 15, T9N, R58W, 6th P.M. TAKEN FROM THE GATHOOK SPRING, QUADRANGLE, COLORADO, WELD COUNTY, 7.5 MINUTE QUAD (TOPOGRAPHIC MAP) PUBLISHED BY THE UNITED STATES DEPARTMENT OF THE INTERIOR, GEOLOGICAL SURVEY. SAID ELEVATION IS MARKED AS BEING 4679 FEET.

BASIS OF BEARINGS

BASIS OF BEARINGS IS A G.P.S. OBSERVATION.



CERTIFICATE

THIS IS TO CERTIFY THAT THE ABOVE PLAY WAS PREPARED FROM FIELD NOTES OF ACTUAL SURVEYS MADE BY ME OR UNDER MY SUPERVISION AND THAT THE SAID PLAY IS TRUE AND CORRECT TO THE BEST OF MY KNOWLEDGE AND BELIEF.

REGISTERED LAND SURVEYOR
REGISTRATION NO. 28285
STATE OF COLORADO

UTAH ENGINEERING & LAND SURVEYING

85 SOUTH 200 EAST - VERNAL, UTAH 84078

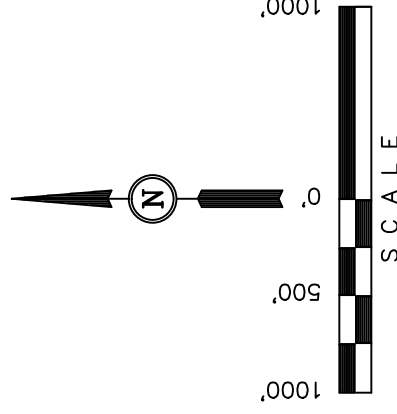
(435) 789-1017

WHITING OIL & GAS CORP.

BASIS OF ELEVATION

BASIS OF BEARINGS

BASIS OF BEARINGS IS A G.P.S. OBSERVATION.



CERTIFICATE OF LAND REGISTRATION

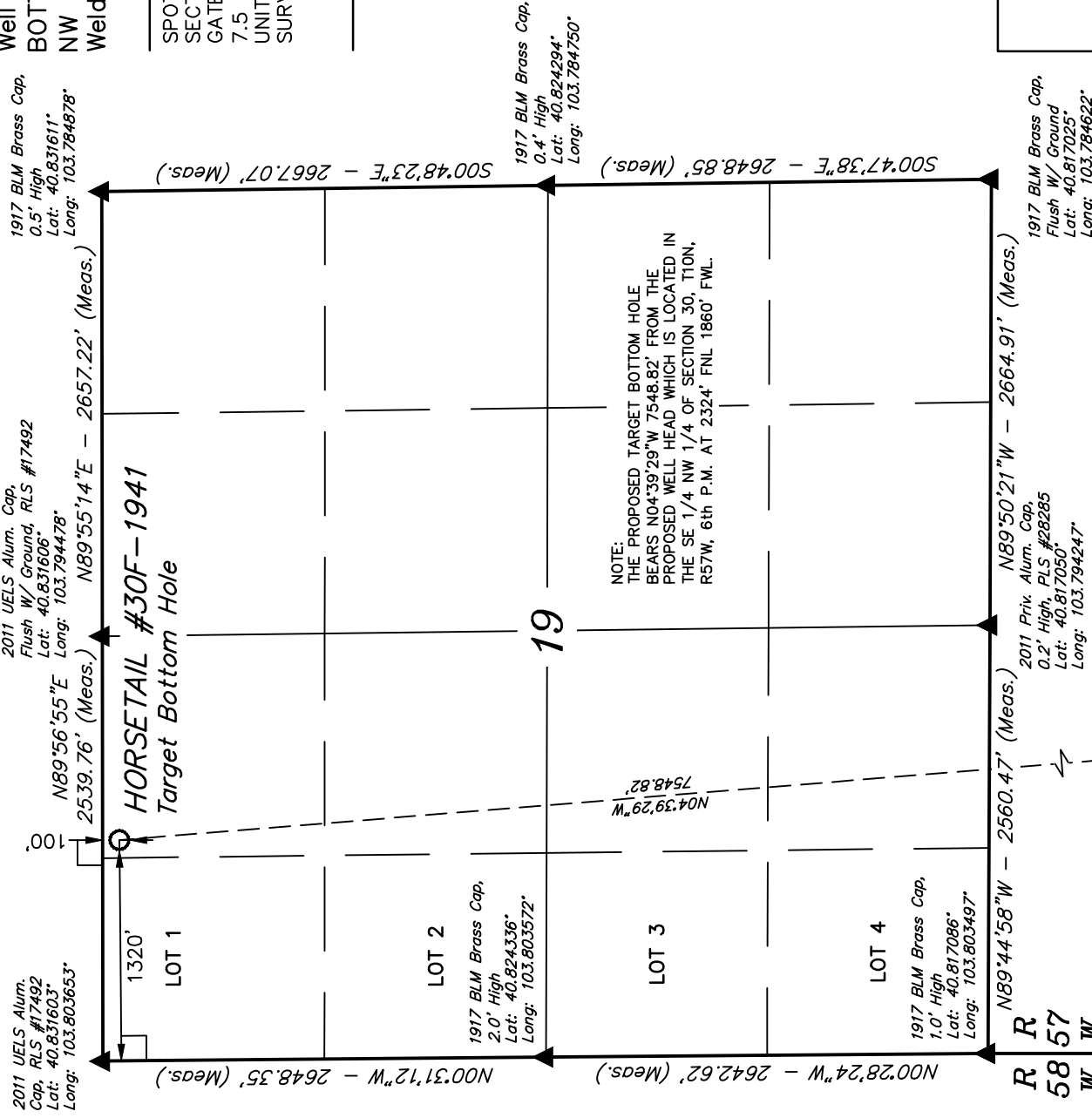
THIS IS TO CERTIFY THAT THE ABOVE PLAT WAS PREPARED FROM FIELD NOTES OF ACTUAL SURVEYS MADE BY ME OR UNDER MY SUPERVISION AND THAT THE SAME ARE TRUE AND CORRECT TO THE BEST OF MY KNOWLEDGE AND BELIEF.

REGISTERED LAND SURVEYOR
RECORDATION NO. 28285
STATE OF COLORADO

Robert J. Bost
48285

UNTAH ENGINEERING & LAND SURVEYING
85 SOUTH 200 EAST - VERNAL, UTAH 84078
(435) 789-1017

SCALE	1" = 1000'	DATE SURVEYED:	DATE DRAWN:
PARTY	D.L.S. D.M.S. J.S.	REFERENCES	10-14-13 10-25-13
WEATHER	COLD	G.L.O. PLAT	
		FILE	WHITING OIL & GAS CORP.



Surface Location

$$| \quad = 90^\circ \text{ SYMBOL}$$

● = PROPOSED WELL HEAD.

▲ = SECTION CORNERS LOCATED.

NAD 83 (TARGET BOTTOM HOLE)

NAD 83 (TARGET BOTTOM HOLE)
LATITUDE = 40°49'52.79" (40.831331)

LONGITUDE = 103°47'55.97" (103

NAD 27 (TARGET BOTTOM HOLE)
LATITUDE = 40°49'52.84" (40.831344)