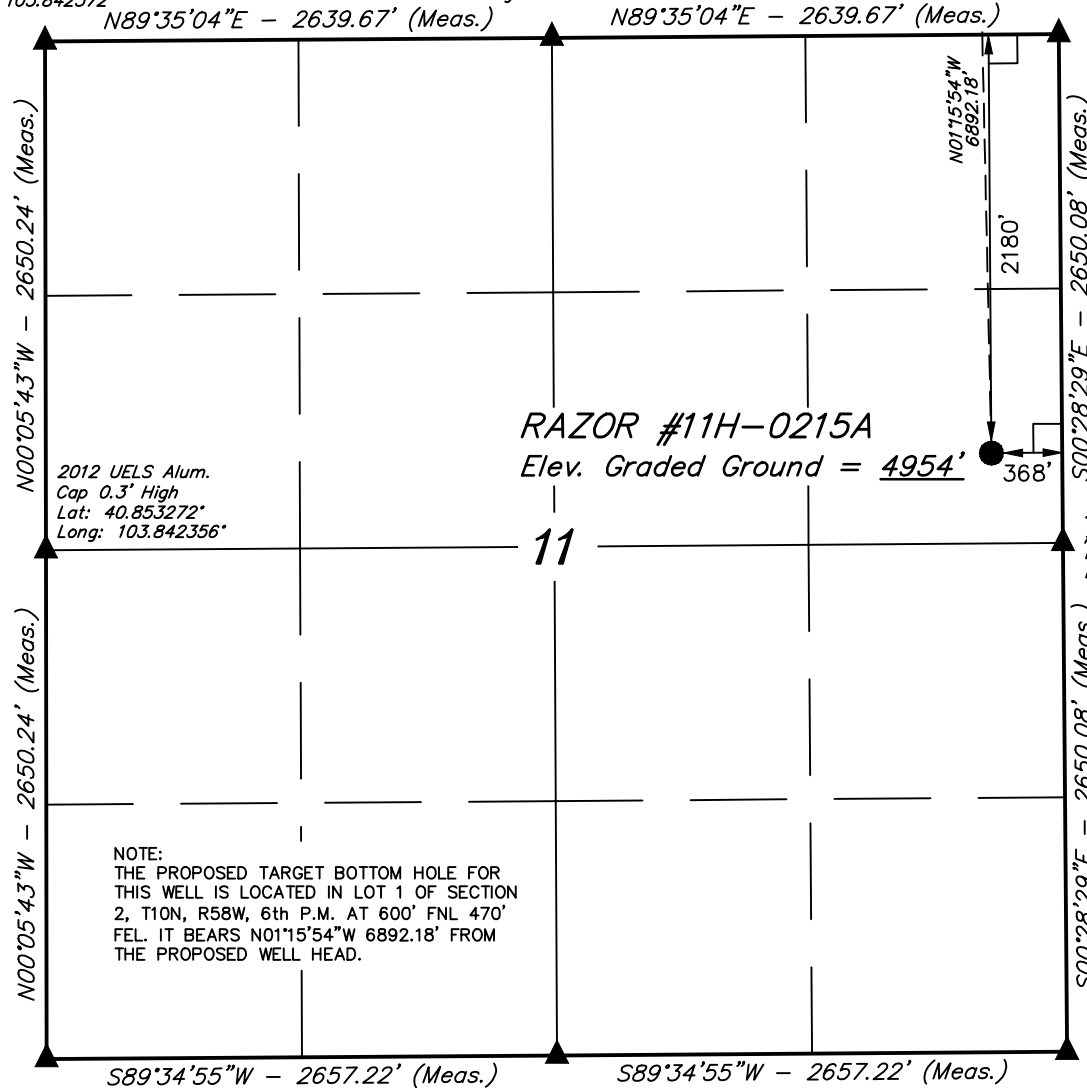


# T10N, R58W, 6th P.M. Target Bottom Hole

2012 UELS Alum.  
Cap 0.3' High  
Lat: 40.860544°  
Long: 103.842372°

2012 UELS Alum.  
Cap 0.3' High  
Lat: 40.860597°  
Long: 103.832833°

2012 UELS Alum. Cap,  
#28285, 0.3' High  
Lat: 40.860647°  
Long: 103.823292°



**RAZOR #11H-0215A**  
Elev. Graded Ground = 4954'

**11**

NOTE:  
THE PROPOSED TARGET BOTTOM HOLE FOR  
THIS WELL IS LOCATED IN LOT 1 OF SECTION  
2, T10N, R58W, 6th P.M. AT 600' FNL 470'  
FEL. IT BEARS N01°15'54\"W 6892.18' FROM  
THE PROPOSED WELL HEAD.

Stone  
Lat: 40.846000°  
Long: 103.842342°

2012 UELS Alum.  
Cap 0.3' High  
Lat: 40.846053°  
Long: 103.832739°

2010 Alum. Cap,  
Flush With Ground,  
T-Post, Large Stones  
Lat: 40.846106°  
Long: 103.823136°

## LEGEND:

- └─┘ = 90° SYMBOL
- = PROPOSED WELL HEAD.
- ▲ = SECTION CORNERS LOCATED.

PDOP = 1.5

NAD 83 (SURFACE LOCATION)	
LATITUDE	= 40°51'16.78" (40.854661)
LONGITUDE	= 103°49'28.41" (103.824558)
NAD 27 (SURFACE LOCATION)	
LATITUDE	= 40°51'16.83" (40.854675)
LONGITUDE	= 103°49'26.61" (103.824058)

## WHITING OIL & GAS CORP.

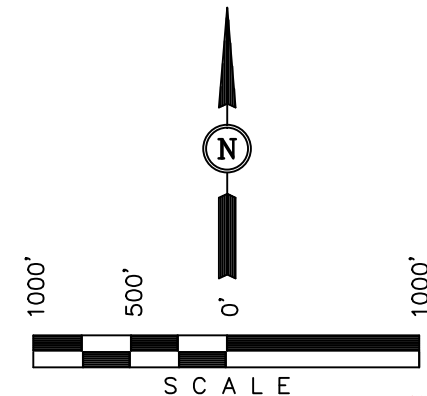
Well location, RAZOR #11H-0215A  
(SURFACE LOCATION), located as shown  
in the SE 1/4 NE 1/4 of Section 11,  
T10N, R58W, 6th P.M., Weld County,  
Colorado.

### BASIS OF ELEVATION

SPOT ELEVATION LOCATED AT THE NORTHEAST CORNER OF  
SECTION 15, T9N, R58W, 6th P.M. TAKEN FROM THE  
GATEHOOK SPRING, QUADRANGLE, COLORADO, WELD COUNTY,  
7.5 MINUTE QUAD (TOPOGRAPHIC MAP) PUBLISHED BY THE  
UNITED STATES DEPARTMENT OF THE INTERIOR, GEOLOGICAL  
SURVEY. SAID ELEVATION IS MARKED AS BEING 4679 FEET.

### BASIS OF BEARINGS

BASIS OF BEARINGS IS A G.P.S. OBSERVATION.



### CERTIFICATE

THIS IS TO CERTIFY THAT THE ABOVE PLAT WAS PREPARED FROM  
FIELD NOTES OF ACTUAL SURVEYS MADE BY ME OR UNDER MY  
SUPERVISION AND THAT THE SAME ARE TRUE AND CORRECT TO THE  
BEST OF MY KNOWLEDGE AND BELIEF.

REGISTERED LAND SURVEYOR  
REGISTRATION NO. 28285  
STATE OF COLORADO

REV: 11-27-13 H.K.W.  
REV: 10-11-13 B.D.H.

**UINTAH ENGINEERING & LAND SURVEYING**  
**85 SOUTH 200 EAST - VERNAL, UTAH 84078**  
(435) 789-1017

SCALE 1" = 1000'	DATE SURVEYED: 05-30-13	DATE DRAWN: 06-03-13
PARTY J.H. C.M. J.S.	REFERENCES G.L.O. PLAT	
WEATHER WARM	FILE WHITING OIL & GAS CORP.	

**T10N, R58W, 6th P.M.**

**WHITING OIL & GAS CORP.**

2012 Alum. Cap,  
0.5' High, Pile of Stones  
PLS #28285  
Lat: 40.875150°  
Long: 103.842578°

2012 UELS Alum.  
Cap 0.3' High  
Lat: 40.875186°  
Long: 103.833000°

2012 UELS Alum.  
Cap. #28285,  
0.3' High  
Lat: 40.875219°  
Long: 103.823419°

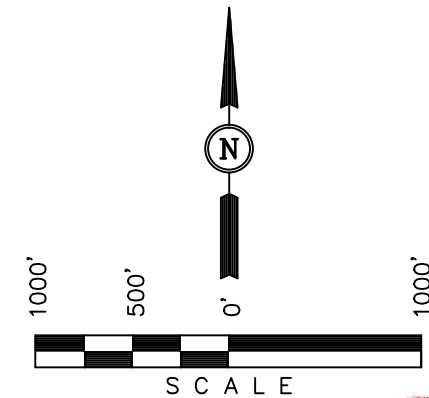
Well location, RAZOR #11H-0215A (TARGET BOTTOM HOLE), located as shown in Lot 1 of Section 2, T10N, R58W, 6th P.M., Weld County, Colorado.

### BASIS OF ELEVATION

SPOT ELEVATION LOCATED AT THE NORTHEAST CORNER OF SECTION 15, T9N, R58W, 6th P.M. TAKEN FROM THE GATEHOOK SPRING, QUADRANGLE, COLORADO, WELD COUNTY, 7.5 MINUTE QUAD (TOPOGRAPHIC MAP) PUBLISHED BY THE UNITED STATES DEPARTMENT OF THE INTERIOR, GEOLOGICAL SURVEY. SAID ELEVATION IS MARKED AS BEING 4679 FEET.

### BASIS OF BEARINGS

BASIS OF BEARINGS IS A G.P.S. OBSERVATION.



### CERTIFICATE

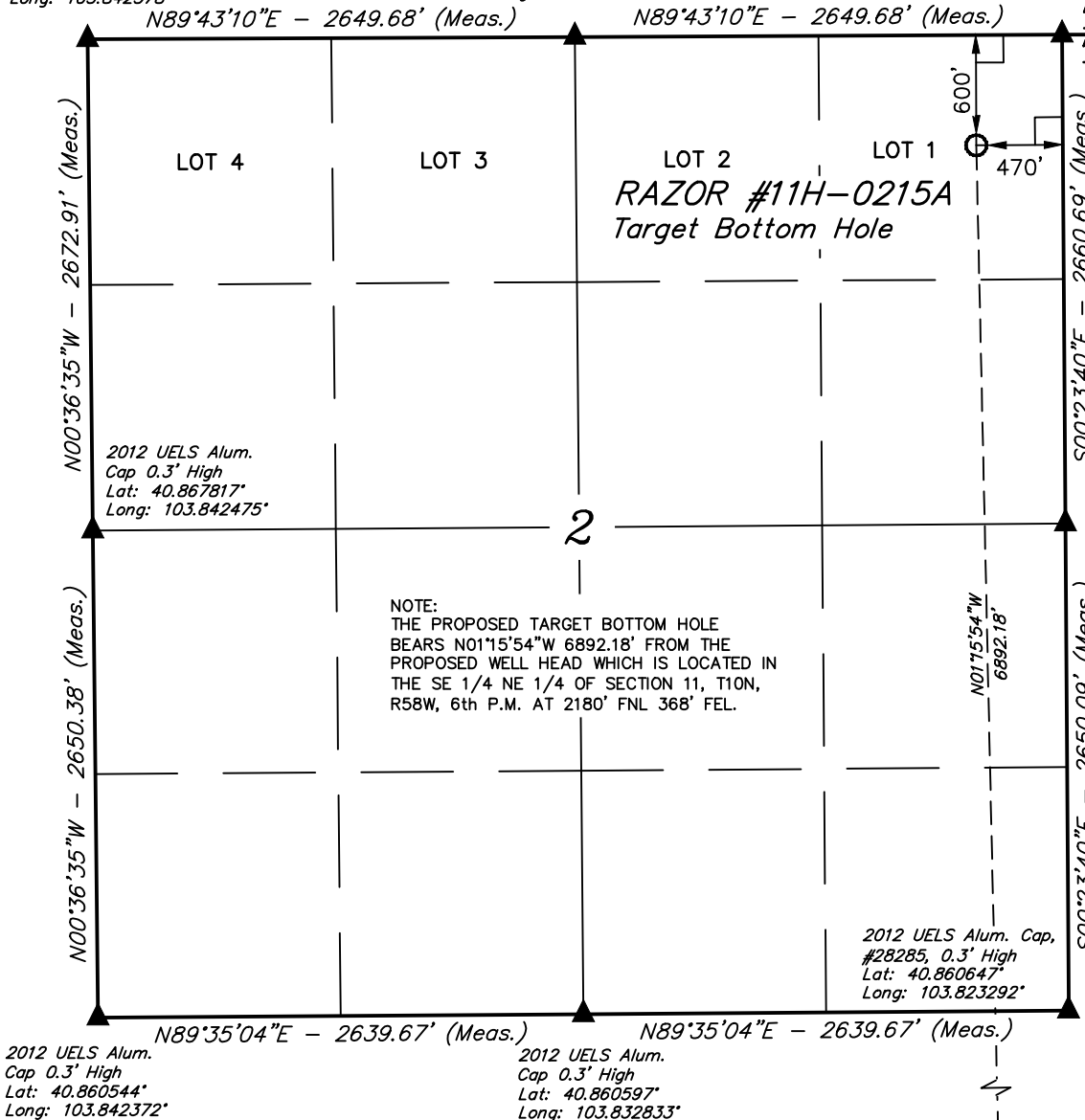
THIS IS TO CERTIFY THAT THE ABOVE PLAT WAS PREPARED FROM FIELD NOTES OF ACTUAL SURVEYS MADE BY ME OR UNDER MY SUPERVISION AND THAT THE SAME ARE TRUE AND CORRECT TO THE BEST OF MY KNOWLEDGE AND BELIEF.

REGISTERED LAND SURVEYOR  
REGISTRATION NO. 28285  
STATE OF COLORADO  
JUL 12 2013

REV: 11-27-13 H.K.W.

**UINTAH ENGINEERING & LAND SURVEYING**  
**85 SOUTH 200 EAST - VERNAL, UTAH 84078**  
**(435) 789-1017**

SCALE 1" = 1000'	DATE SURVEYED: 05-30-13	DATE DRAWN: 06-03-13
PARTY J.H. C.M. J.S.	REFERENCES G.L.O. PLAT	
WEATHER WARM	FILE WHITING OIL & GAS CORP.	



### LEGEND:

- └─┘ = 90° SYMBOL
- = PROPOSED WELL HEAD.
- ▲ = SECTION CORNERS LOCATED.

Surface Location ●

<b>NAD 83 (TARGET BOTTOM HOLE)</b>	
LATITUDE	= 40°52'24.85" (40.873569)
LONGITUDE	= 103°49'30.38" (103.825106)
<b>NAD 27 (TARGET BOTTOM HOLE)</b>	
LATITUDE	= 40°52'24.90" (40.873583)
LONGITUDE	= 103°49'28.57" (103.824603)