

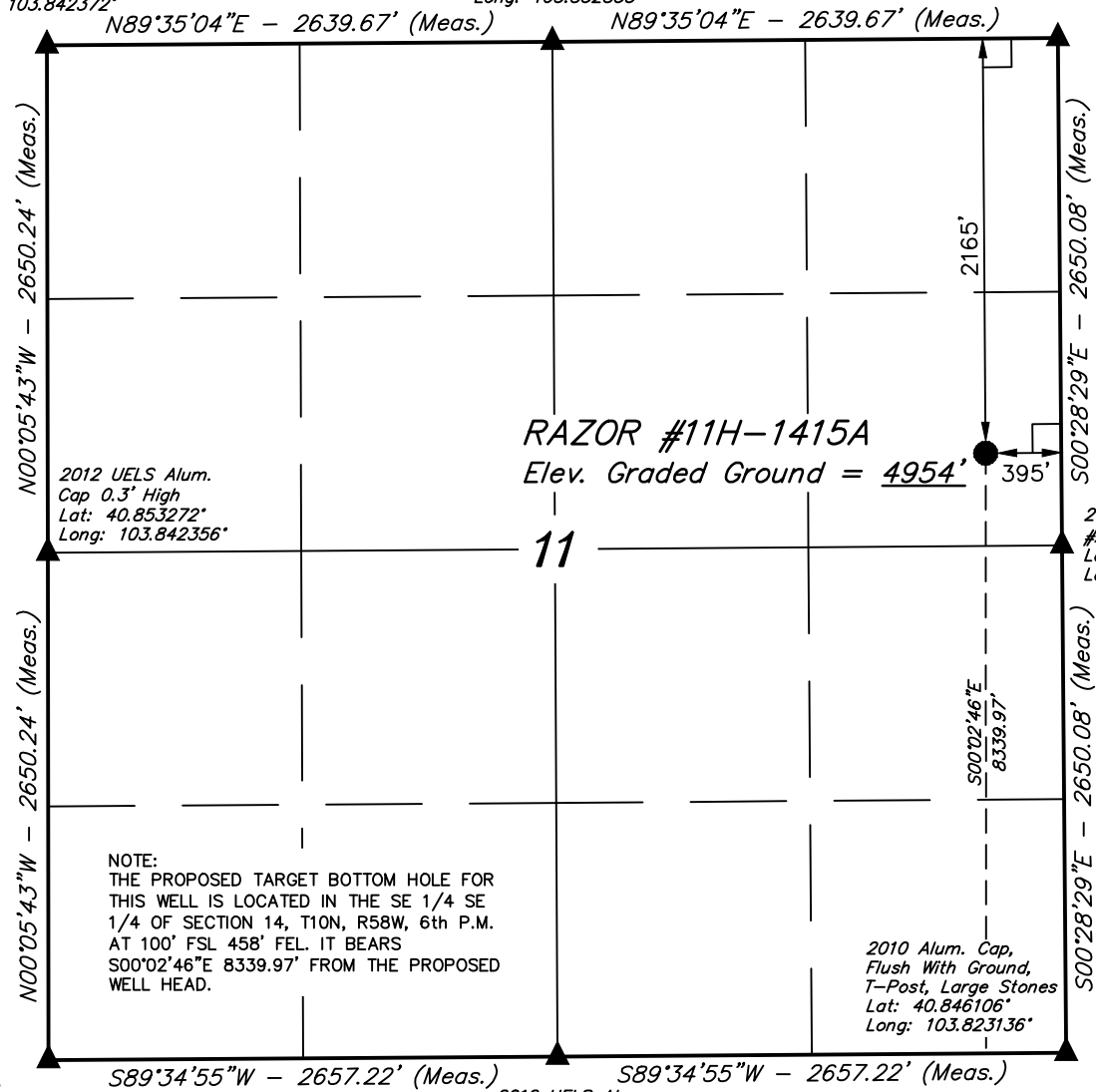
T10N, R58W, 6th P.M.

WHITING OIL & GAS CORP.

2012 UELS Alum.
Cap 0.3' High
Lat: 40.860544°
Long: 103.842372°

2012 UELS Alum.
Cap 0.3' High
Lat: 40.860597°
Long: 103.832833°

2012 UELS Alum. Cap.
#28285, 0.3' High
Lat: 40.860647°
Long: 103.823292°



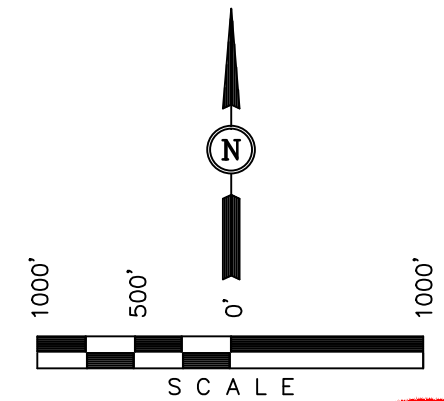
Well location, RAZOR #11H-1415A (SURFACE LOCATION), located as shown in the SE 1/4 NE 1/4 of Section 11, T10N, R58W, 6th P.M., Weld County, Colorado.

BASIS OF ELEVATION

SPOT ELEVATION LOCATED AT THE NORTHEAST CORNER OF SECTION 15, T9N, R58W, 6th P.M. TAKEN FROM THE GATEHOOK SPRING, QUADRANGLE, COLORADO, WELD COUNTY, 7.5 MINUTE QUAD (TOPOGRAPHIC MAP) PUBLISHED BY THE UNITED STATES DEPARTMENT OF THE INTERIOR, GEOLOGICAL SURVEY. SAID ELEVATION IS MARKED AS BEING 4679 FEET.

BASIS OF BEARINGS

BASIS OF BEARINGS IS A G.P.S. OBSERVATION.



CERTIFICATE

THIS IS TO CERTIFY THAT THE ABOVE PLAT WAS PREPARED FROM FIELD NOTES OF ACTUAL SURVEYS MADE BY ME OR UNDER MY SUPERVISION AND THAT THE SAME ARE TRUE AND CORRECT TO THE BEST OF MY KNOWLEDGE AND BELIEF.

REGISTERED LAND SURVEYOR
REGISTRATION NO. 28285
STATE OF COLORADO
JUL 2012 - JUL 2013

REV: 11-27-13 H.K.W.
REV: 10-11-13 B.D.H.

UINTAH ENGINEERING & LAND SURVEYING 85 SOUTH 200 EAST - VERNAL, UTAH 84078 (435) 789-1017		
SCALE 1" = 1000'	DATE SURVEYED: 05-30-13	DATE DRAWN: 06-03-13
PARTY J.H. C.M. J.S.	REFERENCES G.L.O. PLAT	
WEATHER WARM	FILE	WHITING OIL & GAS CORP.

- LEGEND:**
- └─┘ = 90° SYMBOL
 - = PROPOSED WELL HEAD.
 - ▲ = SECTION CORNERS LOCATED.

PDOP = 1.5	
NAD 83 (SURFACE LOCATION)	
LATITUDE = 40°51'16.91" (40.854697)	
LONGITUDE = 103°49'28.76" (103.824656)	
NAD 27 (SURFACE LOCATION)	
LATITUDE = 40°51'16.97" (40.854714)	
LONGITUDE = 103°49'26.95" (103.824153)	

Target Bottom Hole

Stone
Lat: 40.846000°
Long: 103.842342°

2012 UELS Alum.
Cap 0.3' High
Lat: 40.846053°
Long: 103.832739°

2010 Alum. Cap,
Flush With Ground,
T-Post, Large Stones
Lat: 40.846106°
Long: 103.823136°

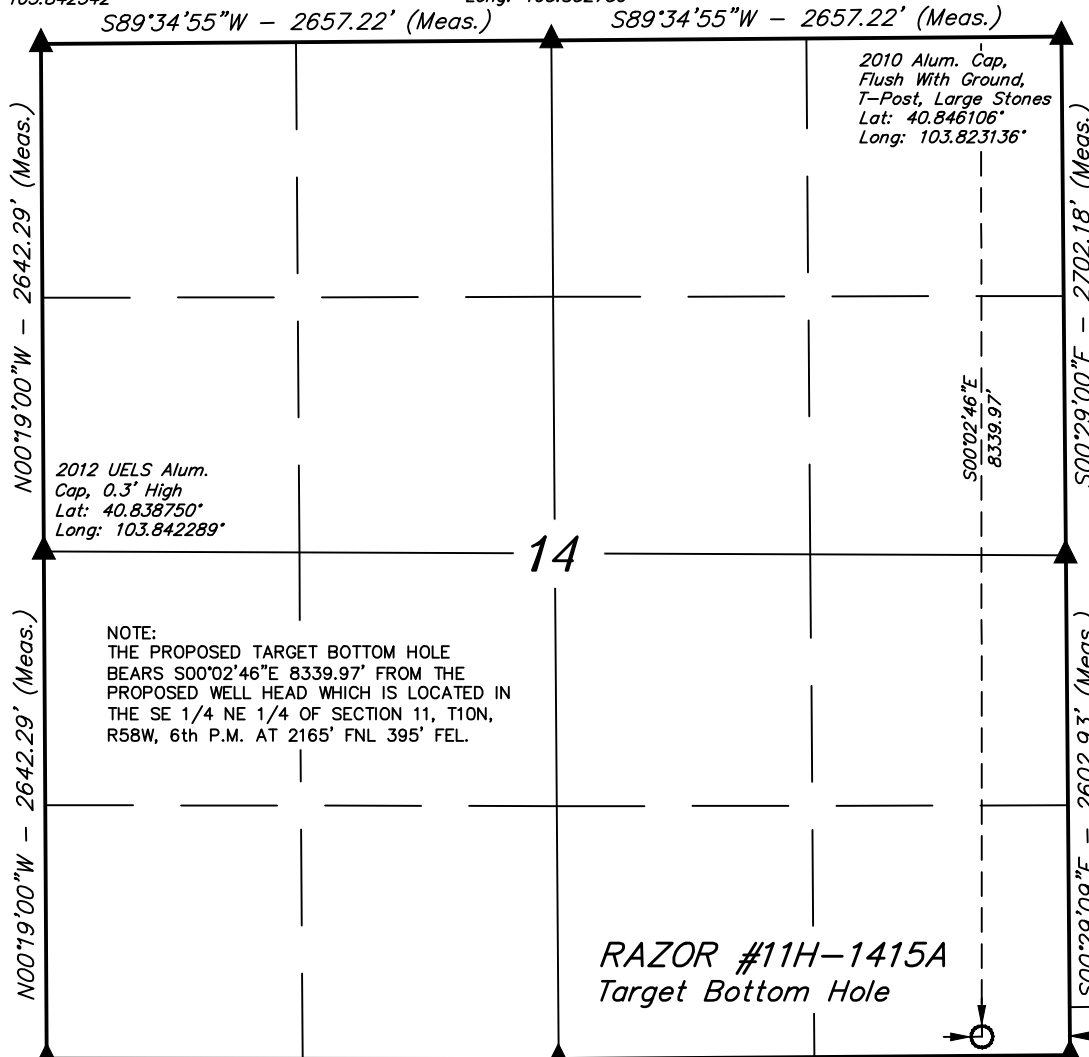
NOTE:
THE PROPOSED TARGET BOTTOM HOLE FOR THIS WELL IS LOCATED IN THE SE 1/4 SE 1/4 OF SECTION 14, T10N, R58W, 6th P.M. AT 100' FSL 458' FEL. IT BEARS S00°02'46"E 8339.97' FROM THE PROPOSED WELL HEAD.

T10N, R58W, 6th P.M.

Surface Location

Stone
Lat: 40.846000°
Long: 103.842342°

2012 UELS Alum.
Cap 0.3' High
Lat: 40.846053°
Long: 103.832739°



2012 UELS Alum.
Cap, 0.5' Below
Ground
Lat: 40.831497°
Long: 103.842233°

2012 UELS Alum.
Cap, 0.5' High,
Buried Stone
Lat: 40.831497°
Long: 103.832603°

S89°35'31"W
2663.79' (Meas.)

Set Stone
Lat: 40.831547°
Long: 103.822978°

LEGEND:

- └─┘ = 90° SYMBOL
- = PROPOSED WELL HEAD.
- ▲ = SECTION CORNERS LOCATED.

NAD 83 (TARGET BOTTOM HOLE)	
LATITUDE	= 40°49'54.53" (40.831814)
LONGITUDE	= 103°49'28.69" (103.824636)
NAD 27 (TARGET BOTTOM HOLE)	
LATITUDE	= 40°49'54.58" (40.831828)
LONGITUDE	= 103°49'26.88" (103.824133)

WHITING OIL & GAS CORP.

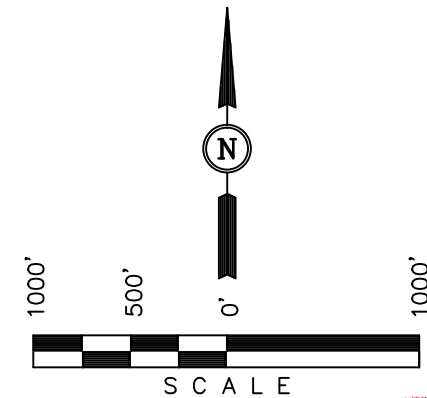
Well location, RAZOR #11H-1415A (TARGET BOTTOM HOLE), located as shown in the SE 1/4 SE 1/4 of Section 14, T10N, R58W, 6th P.M., Weld County, Colorado.

BASIS OF ELEVATION

SPOT ELEVATION LOCATED AT THE NORTHEAST CORNER OF SECTION 15, T9N, R58W, 6th P.M. TAKEN FROM THE GATEHOOK SPRING, QUADRANGLE, COLORADO, WELD COUNTY, 7.5 MINUTE QUAD (TOPOGRAPHIC MAP) PUBLISHED BY THE UNITED STATES DEPARTMENT OF THE INTERIOR, GEOLOGICAL SURVEY. SAID ELEVATION IS MARKED AS BEING 4679 FEET.

BASIS OF BEARINGS

BASIS OF BEARINGS IS A G.P.S. OBSERVATION.



CERTIFICATE

THIS IS TO CERTIFY THAT THE ABOVE PLAT WAS PREPARED FROM FIELD NOTES OF ACTUAL SURVEYS MADE BY ME OR UNDER MY SUPERVISION AND THAT THE SAME ARE TRUE AND CORRECT TO THE BEST OF MY KNOWLEDGE AND BELIEF.

REGISTERED LAND SURVEYOR
REGISTRATION NO. 28285
STATE OF COLORADO

REV: 11-27-13 H.K.W.

UINTAH ENGINEERING & LAND SURVEYING
85 SOUTH 200 EAST - VERNAL, UTAH 84078
(435) 789-1017

SCALE 1" = 1000'	DATE SURVEYED: 05-30-13	DATE DRAWN: 06-03-13
PARTY J.H. C.M. J.S.	REFERENCES G.L.O. PLAT	
WEATHER WARM	FILE WHITING OIL & GAS CORP.	