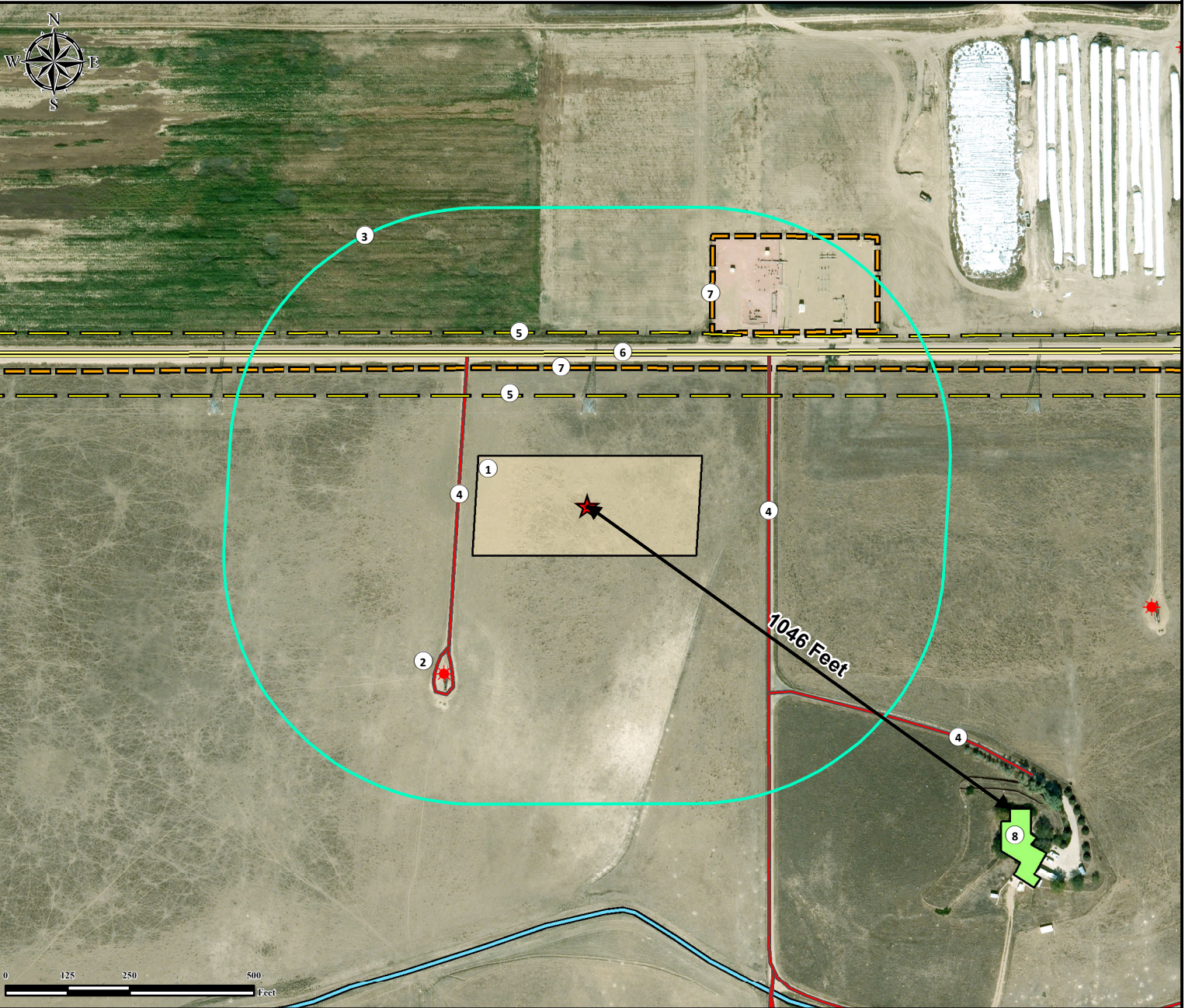


Location Drawing

SPURLING 35N-34HZ Facility

NE¼ NW¼ SECTION 34, TOWNSHIP 2 NORTH, RANGE 67 WEST OF THE 6TH PRINCIPAL MERIDIAN



1. Proposed Facility SPURLING 35N-34HZ.
2. Existing Well SUCKLA FARMS E #2 is ±444' SW.
3. 500' Radius
4. Private Roads are ±260' W, ±365' E, and ±524' SE.

5. Powerlines are ±221' N, and 348' N.
6. County Road 16 is ±306' N.
7. Fences are ±277' N and ±427' NE.
8. Building Unit is ±1046' SE.

Legend			Reference Location	
	Existing Well		** All measurements are made from Reference Point ** Lat: 40.101185° Long:-104.878361° (NAD83) Elevation: 5020 Feet	
	500' Radius		Surface Use: Rangeland	
	Proposed Facility		Nearest Building Unit: >1000' SE	
	Building Unit		Prepared for: KERR-MCGEE OIL & GAS ONSHORE LP	
	Fence		FNL: 310' FWL: 2253' Data Sources: - Aerial courtesy of Anadarko Petroleum Corporation (2010)	
	Power Line		Use our resources to find yours! www.petro-fs.com (303) 928-7128	
 Petroleum Field Services			Field Date: 04/30/2013 Drafting Date: 10/22/2013 Drafter: CPO Revision: 2	