

T10N, R58W, 6th P.M.

WHITING OIL & GAS CORP.

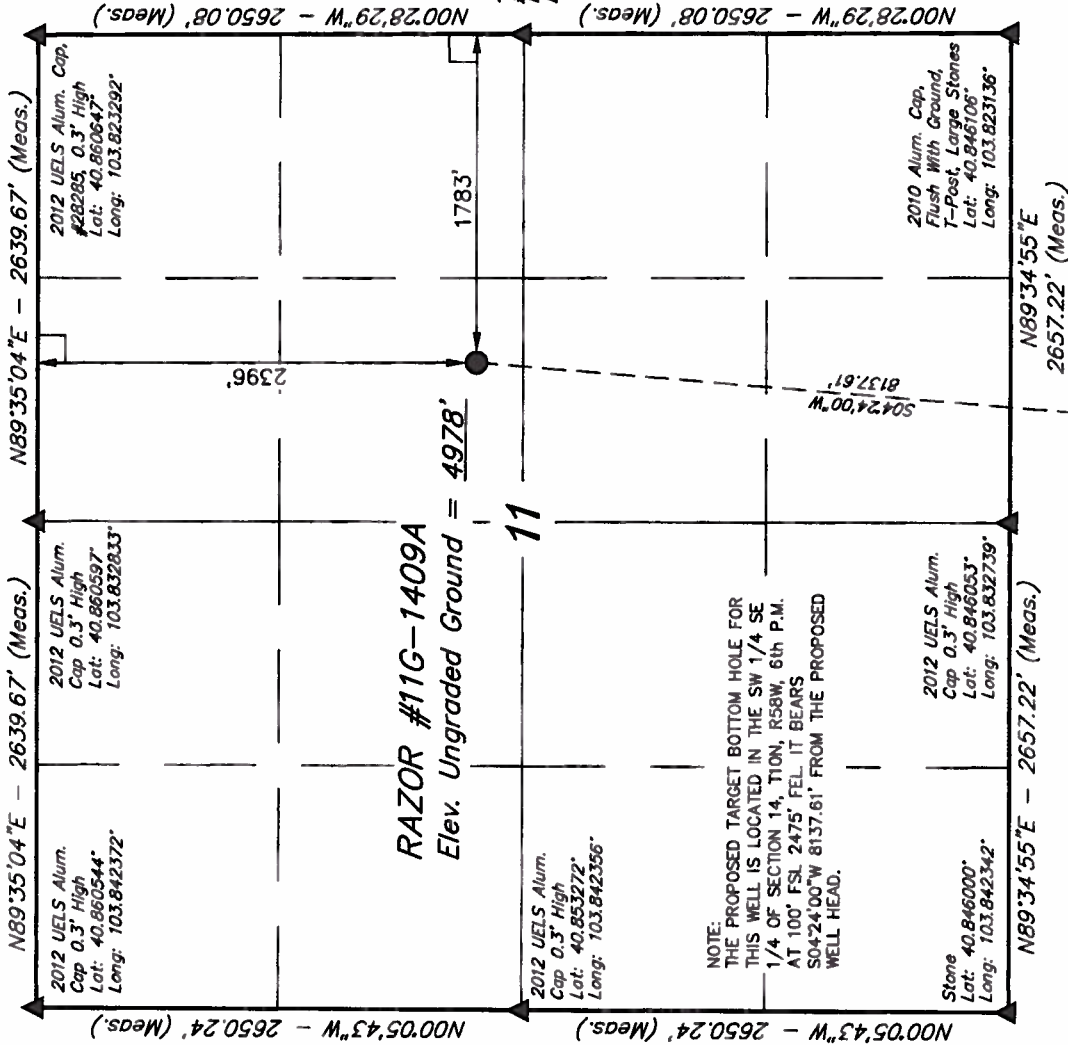
Well location, RAZOR #11G-1409A (SURFACE LOCATION), located as shown in the SW 1/4 NE 1/4 of Section 11, T10N, R58W, 6th P.M., Weld County, Colorado.

BASIS OF ELEVATION

SPOT ELEVATION LOCATED AT THE NORTHEAST CORNER OF SECTION 15, T9N, R58W, 6th P.M. TAKEN FROM THE GATEHOOK SPRING, QUADRANGLE, COLORADO, WELD COUNTY, 7.5 MINUTE QUAD (TOPOGRAPHIC MAP) PUBLISHED BY THE UNITED STATES DEPARTMENT OF THE INTERIOR, GEOLOGICAL SURVEY. SAID ELEVATION IS MARKED AS BEING 4679 FEET.

BASIS OF BEARINGS

BASIS OF BEARINGS IS A G.P.S. OBSERVATION.



NOTE:
THE PROPOSED TARGET BOTTOM HOLE FOR THIS WELL IS LOCATED IN THE SW 1/4 SE 1/4 OF SECTION 14, T10N, R58W, 6th P.M. AT 100' FSL 2475' FEL IT BEARS S04°24'00\"W 8137.61' FROM THE PROPOSED WELL HEAD.



SCALE

CERTIFICATE

THIS IS TO CERTIFY THAT THE ABOVE PLAT WAS PREPARED FROM FIELD NOTES OF ACTUAL SURVEY MADE BY ME OR UNDER MY SUPERVISION AND THAT THE SAME ARE TRUE AND CORRECT TO THE BEST OF MY KNOWLEDGE AND BELIEF.

REGISTERED LAND SURVEYOR
REGISTRATION NO. 28285
STATE OF COLORADO 07-03-13

REVISED: 07-03-13 J.W.

UNTAH ENGINEERING & LAND SURVEYING
85 SOUTH 200 EAST - VERNAL, UTAH 84078
(435) 789-1017

LEGEND:		PDOP = 1.5
—	90° SYMBOL	
●	PROPOSED WELL HEAD.	
▲	SECTION CORNERS LOCATED.	
		NAD 83 (SURFACE LOCATION) LATITUDE = 40°51'14.54" (40.854039) LONGITUDE = 103°49'46.79" (103.829664)
		NAD 27 (SURFACE LOCATION) LATITUDE = 40°51'14.59" (40.854053) LONGITUDE = 103°49'44.98" (103.829161)
		PARTY D.N. G.W. H.K.W.
		REFERENCES G.L.O. PLAT
		FILE WHITING OIL & GAS CORP.
		WEATHER WARM
		SCALE 1" = 1000'
		DATE SURVEYED: 05-10-13
		DATE DRAWN: 05-15-13

T10N, R58W, 6th P.M.

WHITING OIL & GAS CORP.

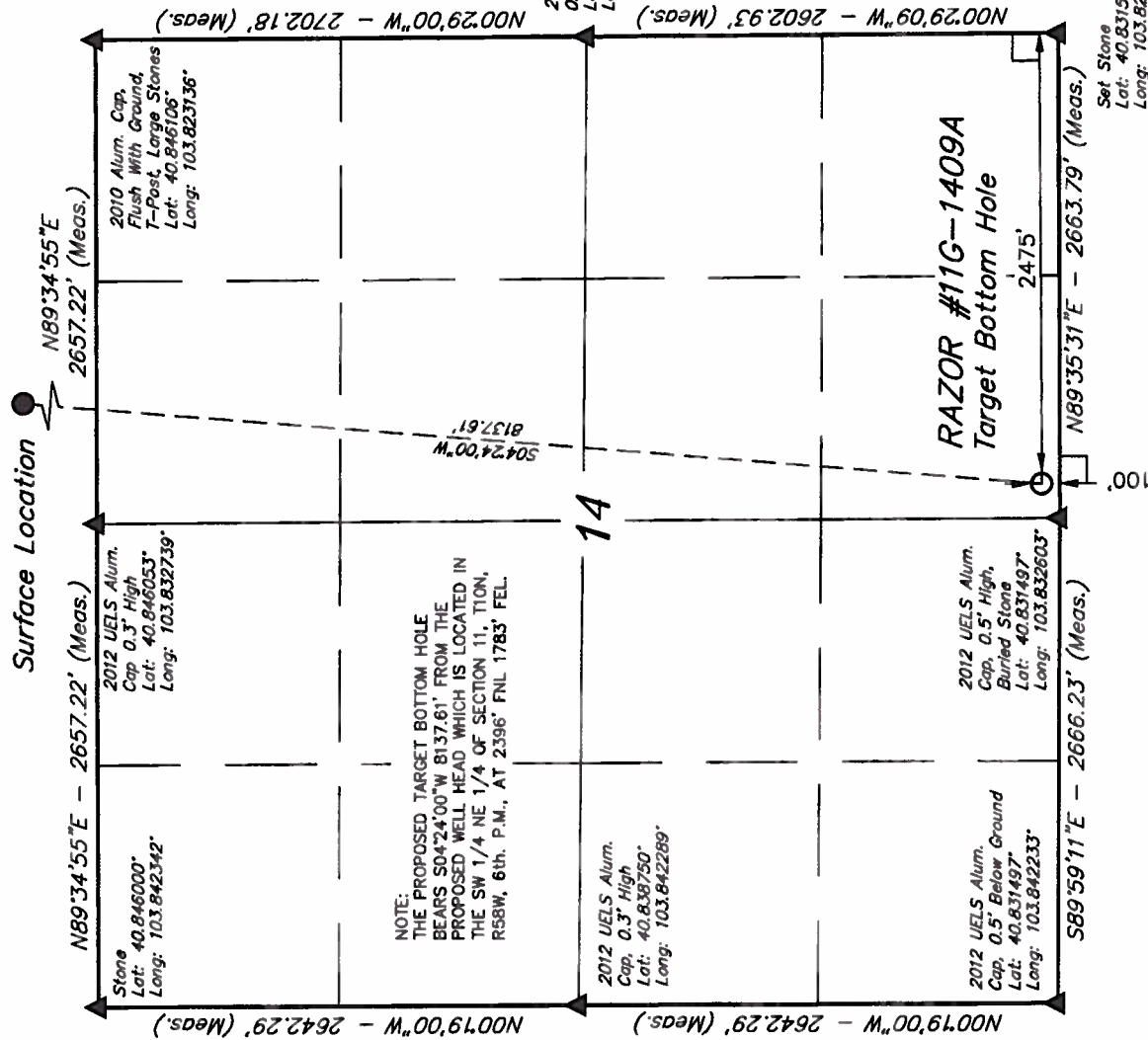
Well location, RAZOR #11G-1409A (TARGET BOTTOM HOLE), located as shown in the SW 1/4 SE 1/4 of Section 14, T10N, R58W, 6th P.M., Weld County, Colorado.

BASIS OF ELEVATION

SPOT ELEVATION LOCATED AT THE NORTHEAST CORNER OF SECTION 15, T9N, R58W, 6th P.M. TAKEN FROM THE GATEHOOK SPRING, QUADRANGLE, COLORADO, WELD COUNTY, 7.5 MINUTE QUAD (TOPOGRAPHIC MAP) PUBLISHED BY THE UNITED STATES DEPARTMENT OF THE INTERIOR, GEOLOGICAL SURVEY. SAID ELEVATION IS MARKED AS BEING 4679 FEET.

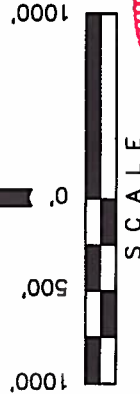
BASIS OF BEARINGS

BASIS OF BEARINGS IS A G.P.S. OBSERVATION.



LEGEND:

- = 90° SYMBOL
- = PROPOSED WELL HEAD.
- ▲ = SECTION CORNERS LOCATED.



CERTIFICATE

THIS IS TO CERTIFY THAT THE ABOVE CONTAINS PREPARED FROM FIELD NOTES OF ACTUAL SURVEY MADE BY ME OR UNDER MY SUPERVISION AND THAT THE SAID MEASUREMENTS ARE TRUE TO THE BEST OF MY KNOWLEDGE AND BELIEF.

REGISTERED LAND SURVEYOR
REGISTRATION NO. 28285
STATE OF COLORADO
09-03-13

REV.: 07-03-13 J.W.

UTAH ENGINEERING & LAND SURVEYING
85 SOUTH 200 EAST - VERNAL, UTAH 84078
(435) 789-1017

SCALE 1" = 1000'	DATE SURVEYED: 05-10-13	DATE DRAWN: 05-15-13
PARTY D.N. G.W. H.K.W.	REFERENCES G.L.O. PLAT	
WEATHER WARM	FILE	WHITING OIL & GAS CORP.

NAD 83 (TARGET BOTTOM HOLE)
LATITUDE = 40°49'54.39" (40.831775)
LONGITUDE = 103°49'54.92" (103.831922)
NAD 27 (TARGET BOTTOM HOLE)
LATITUDE = 40°49'54.44" (40.831789)
LONGITUDE = 103°49'53.12" (103.831422)