

KING SURVEYORS 650 E. GARDEN DR. WINDSOR, CO 80550

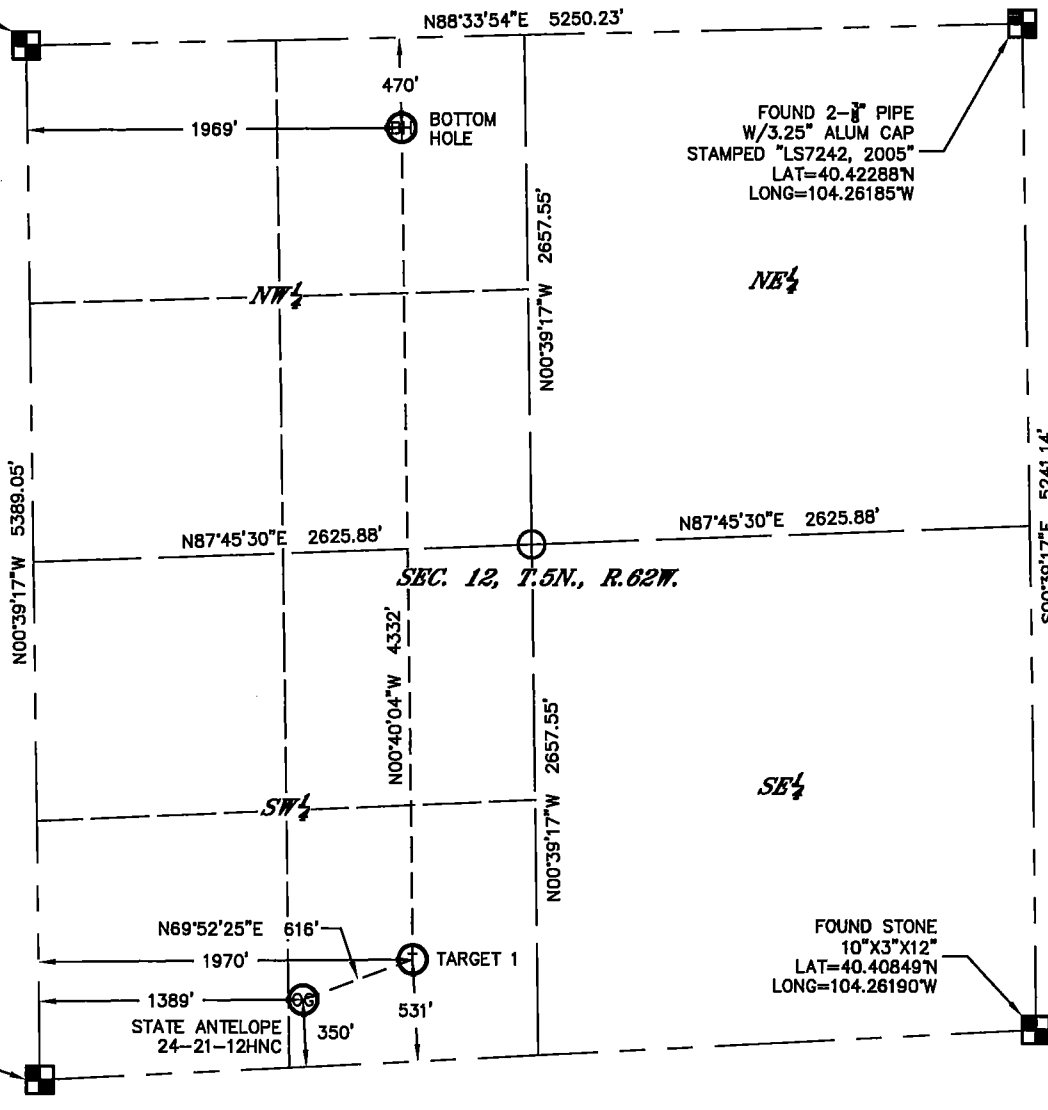
# WELL LOCATION CERTIFICATE

STATE ANTELOPE 24-21-12HNC

THIS MAP DOES NOT REPRESENT A BOUNDARY SURVEY

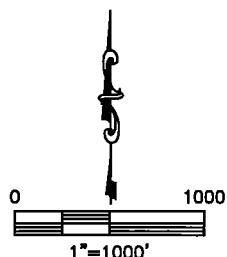
SECTION: 12  
TOWNSHIP: 5N  
RANGE: 62W

FOUND #6 REBAR  
W/3.25" ALUM CAP  
STAMPED "LS7735, 2006"  
LAT=40.42272N  
LONG=104.28070W



In accordance with a request from RANDY EDELEN with BONANZA CREEK ENERGY, INC., King Surveyors has determined the surface location of STATE ANTELOPE 24-21-12HNC to be 350' from the SOUTH line and 1389' from the WEST line and the bottom hole to be 470' from the NORTH line and 1969' from the WEST line, as measured at right angles, from the section lines of Section 12, Township 5 North, Range 62 West of the Sixth Principal Meridian, County of Weld, State of Colorado.

I hereby state that this Well Location Certificate was prepared by me, or under my direct supervision, that the fieldwork was completed on 10-3-2013, for and on behalf of BONANZA CREEK ENERGY, INC., that this is not a Land Survey Plat or an Improvement Survey Plat, and that it is not to be relied upon for establishment of fence, building, or other future improvement lines.



## NOTES:

- 1) Bearings shown are Grid Bearings of the Colorado State Plane Coordinate System, North Zone, North American Datum 1983. The lineal dimensions as contained herein are based upon the "U.S. Survey Foot."
- 2) Ground elevations are based on an observed GPS elevation (NAVD 1988 DATUM).
- 4) IMPROVEMENTS: See LOCATION DRAWING for all visible improvements within 500' of the disturbed area.
- 5) SURFACE USE: WELL PAD/PASTURE/PRAIRIE
- 6) INSTRUMENT OPERATOR: AARON LUND

## NOTICE

According to Colorado law, you must commence any legal action based upon any defect in this W.L.C. within three years after you first discover such defect. In no event, may any action based upon any defect in this survey be commenced more than ten years after the date of the certificate shown hereon. (13-80-105 C.R.S.)

## LEGEND

- = FOUND ALIQUOT MONUMENT AS DESCRIBED
- = CALCULATED POSITION

## SURFACE LOCATION

LATITUDE: 40.40904N  
LONGITUDE: 104.27576W  
PDOP: 1.2  
ELEV: 4575'  
1/4,1/4: SE 1/4 SW 1/4  
NEAREST PROPERTY LINE:

## TARGET

LATITUDE: 40.40960N  
LONGITUDE: 104.27367W  
1/4,1/4: SE 1/4 SW 1/4

Lawrence S. Pepek  
Colorado Licensed Professional Surveyor #33642  
10-3-2013

PROJECT#: 2013599