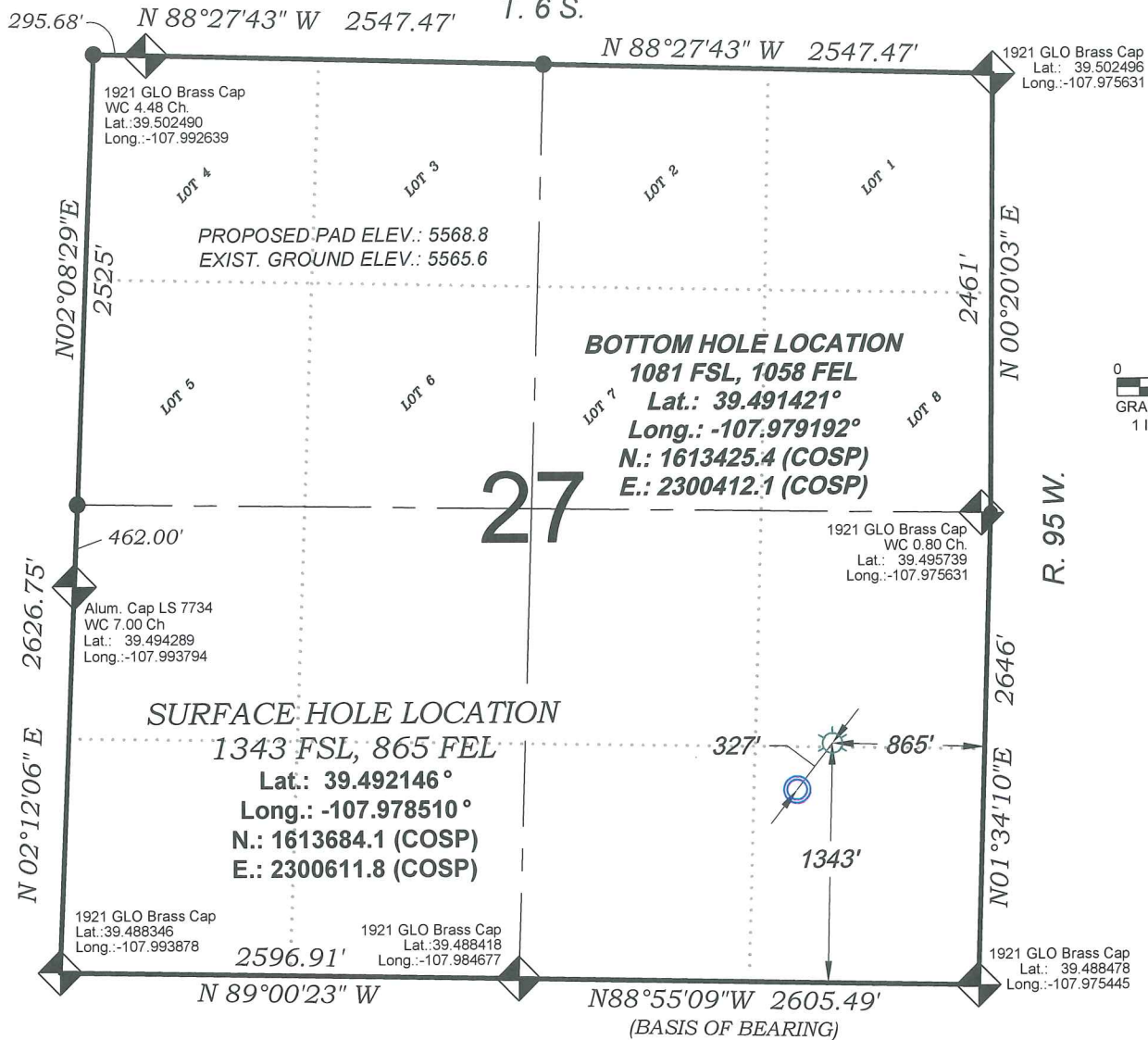


# Federal PA 444-27

T. 6 S.



THERE ARE NO VISIBLE  
IMPROVEMENTS WITHIN 400'  
OF THIS LOCATION

## - LEGEND -

FIELD LOCATED SECTION  
MONUMENTS AS DESCRIBED

FIELD SURVEYED  
WELL LOCATION

CALCULATED BOTTOM  
HOLE LOCATION

CALCULATED SECTION  
CORNER LOCATION

## SURVEYORS STATEMENT

I, MICHAEL J. LANGHORNE, A REGISTERED LAND SURVEYOR IN THE  
STATE OF COLORADO DO HEREBY CERTIFY THAT THE SURVEY SHOWN  
HEREON WAS PREPARED UNDER MY DIRECT SUPERVISION AND HAS  
BEEN STAKED ON THE GROUND AS SHOWN ON THE PLAT AND  
CHECKING THAT THIS MAP IS A TRUE REPRESENTATION THEREOF.

MICHAEL J. LANGHORNE, COLORADO REGISTRATION NO. 36572  
FOR AND ON BEHALF OF  
BOOKCLIFF SURVEY SERVICES, INC.

## REFERENCES

- 1) RESURVEY of a PORTION and EXTENSION SURVEY, T. 6 S., R. 95 W., 6 th P.M (GLO PLAT)
- 2) U.S.G.S. QUAD: RULISON and ANVIL POINTS, CO

136 East Third Street  
Rifle, Colorado  
81650 Ph. (970)  
625-2720 Fax (970)  
625-2773

**BOOKCLIFF**  
Survey Services, Inc.

SURVEY DATE: 10/29/12  
MAP DATE: 7/11/13  
SCALE: 1" = 1000'  
PLAT: 1 of 1  
PROJECT: Valley

## NOTES

- 1) ELEVATIONS BASED ON N.A.V.D. 1988 PUBLISHED COORDINATES.
- 2) LATITUDES AND LONGITUDES ARE BASE ON NAD 83, PUBLISHED COORDINATES
- 3) STATE PLANE COORDINATES ARE BASED ON COLORADO CENTRAL ZONE, U.S. SURVEY FEET.
- 4) ELEVATION MASK SET TO 15°
- 5) GPS OPERATOR J. KIRKPATRICK, OBSERVED A PDOP 1.3 ON SURVEY POINT NUMBER 406.
- 6) SURFACE AND BOTTOM HOLE LOCATIONS ARE MEASURED 90° FROM SECTION LINES.

**WELL LOCATION PLAT Prepared for:**  
**WPXENERGY** WPX Energy Rocky Mountain, LLC

NE1/4 SE1/4, SECTION 27  
T. 6 S., R. 95 W. of the 6th. P.M.  
GARFIELD COUNTY, COLORADO