

LOG created using Lplot VH Version 3.0, July 07, 2013, Copyright (C) 1999-2009 Pason Systems Corp.

OPERATOR: NOBLE ENERGY INC
WELL: WOLFPACK B02-64-1HN
LOCATION: NWSW SEC2, T5N, R64W
COUNTY: WELD
STATE: COLORADO
SPOT: 1463' FSL, 170' FWL
ELEVATION: GE: 4616', KB: 4632'
FIELD: WATTENBERG
SPUD DATE: 06/29/2013
TD DATE: 07/07/2013
DATES LOGGED: 07/01/2013 - 07/07/2013
DEPTHS LOGGED: 1000' - 10853'
LOGGERS: CHRIS WILLATT, TONY COX
DRILLING FLUID: LSND
DRILLING RIG: PRECISION 829
API: 05-123-37324
LOG TYPE: VERTICAL
SCALE: 1:240 (5 inches per 100 feet)
REMARKS: WELLSITE GEOLOGICAL SERVICES PROVIDED BY COLUMBINE LOGGING INC.

LOG CONTINUES ON FILE: WOLFPACK B02-64-1HN HORIZ.lplot

LITHOLOGIES



Sandstone



Shaly Sandstone



Shaly Siltstone



Silty Shale

ENGINEERING SYMBOLS



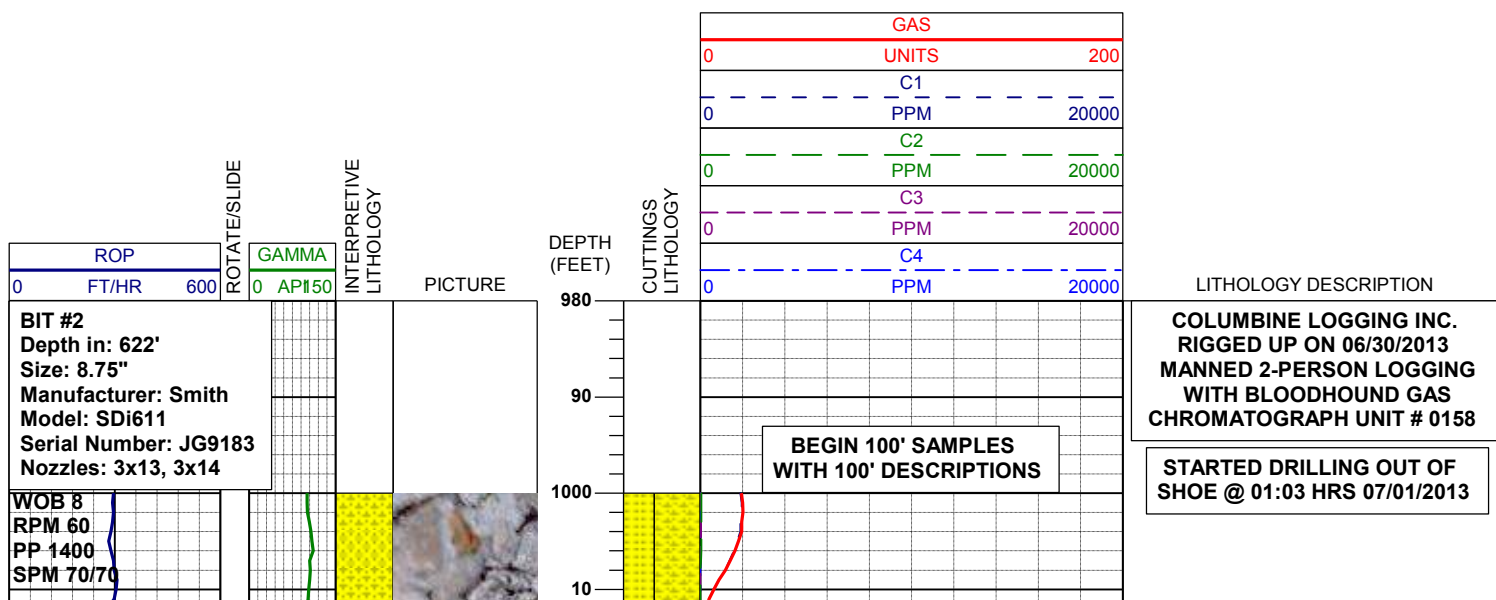
Connection

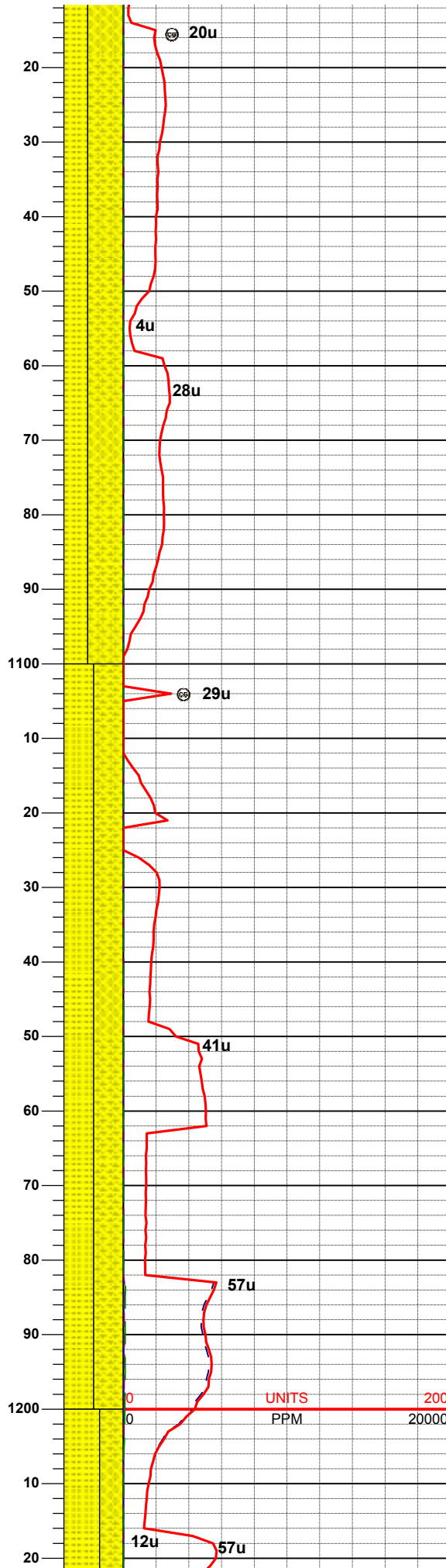
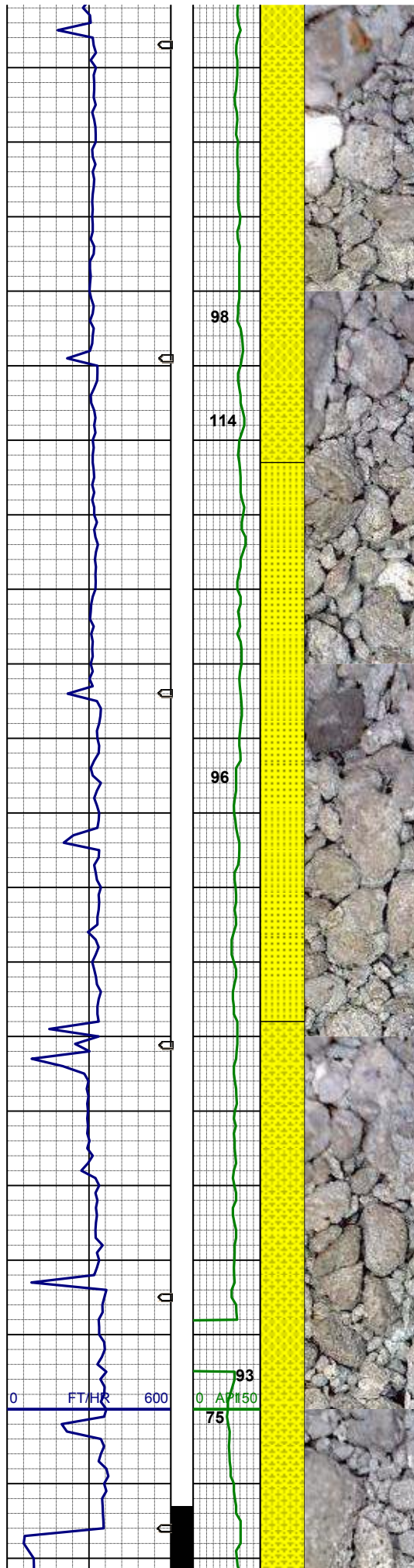


Connection Gas



Midnight Depth



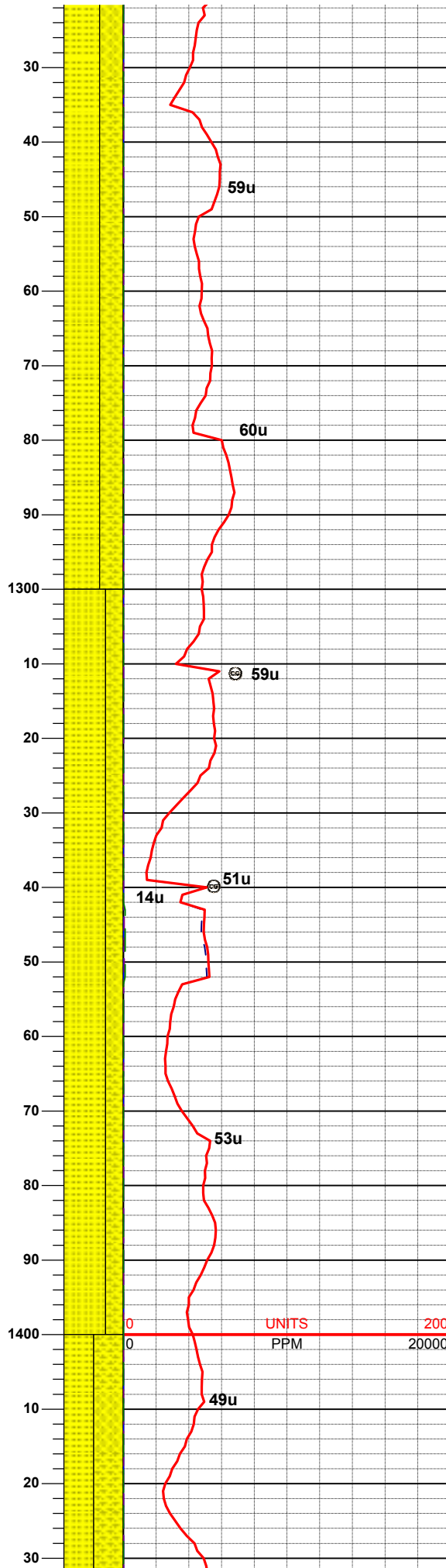
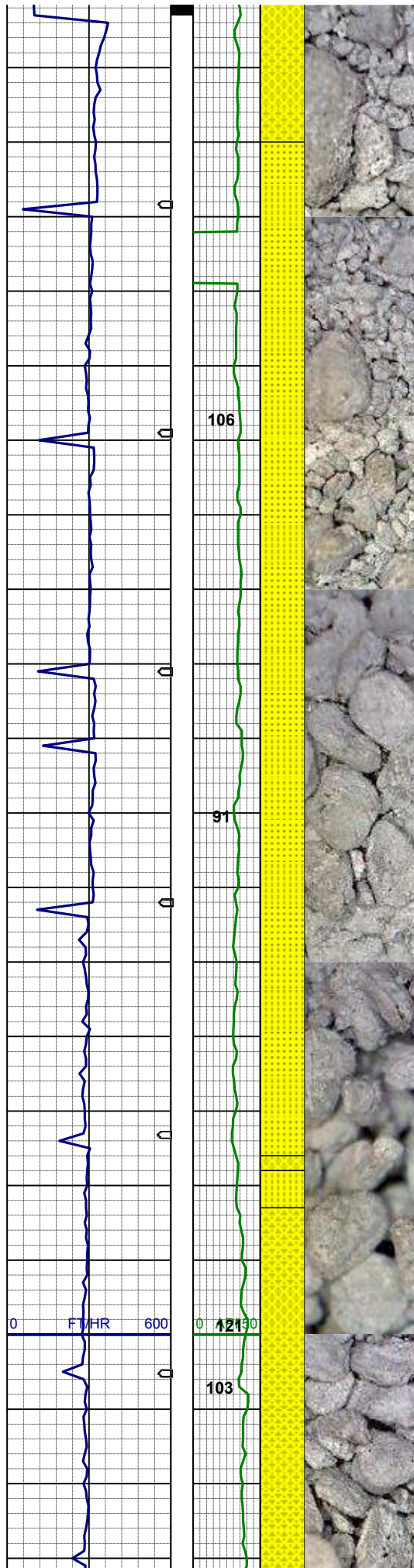


60% SHYSS: vlt-mgy, trns- op, vf- ml, sbrndd, p-mod srt, sft -firm, arg mtx, p -mod cmt, sl calc, tr biot
40% SS: wh-mgy, clr- trns- f-mgr, mod srt, fri, p cmt, arg- sil mtx, sl calc, tr biot

50% SHYSS: vlt-mgy, trns- op, vf- ml, sbrndd, p-mod srt, sft -firm, arg mtx, p -mod cmt, sl calc, tr biot
50% SS: wh-mgy, clr- trns- f-mgr, mod srt, fri, p cmt, arg- sil mtx, sl calc, tr biot

MD 1164'
INC 1.00°
AZI 274.05°
TVD 1163.9'

WT 8.4 / VIS 28

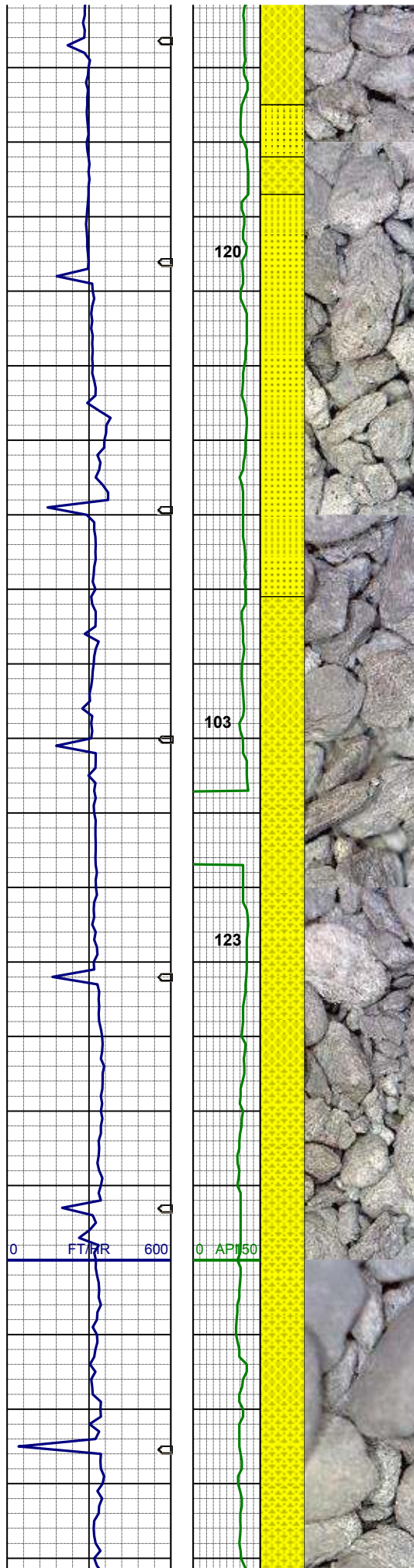


60% SS: wh-mgy, clr- trnsi, f-mgr,
mod srt, fri, p cmt, arg- sil mtx, sl calc,
tr biot, tr glau
40% SHYSS: vlt-mgy, trnsi- op, vf- ml,
sbrnnd, p-mod srt, sft -firm, arg mtx, p
-mod cmt, sl calc, tr biot

70% SS: wh-mgy, clr- trnsi, f-mgr,
mod srt, fri, p cmt, arg- sil mtx, sl calc,
tr biot, tr glau
30% SHYSS: vlt-mgy, trnsi- op, vf- ml,
sbrnnd, p-mod srt, sft -firm, arg mtx, p
-mod cmt, sl calc, tr biot

WT 8.4 / VIS 28

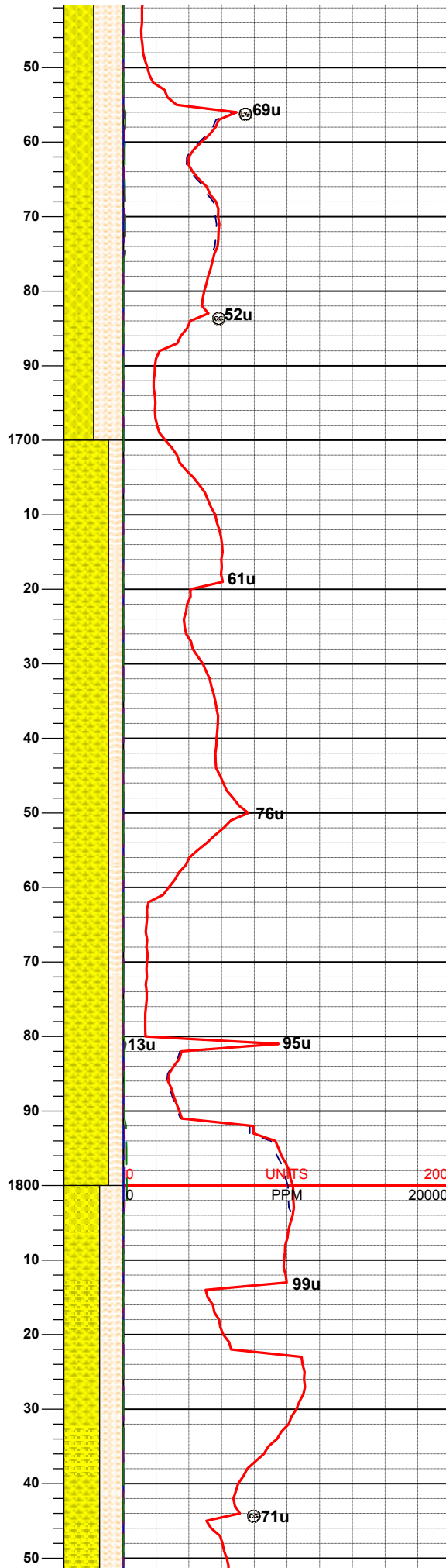
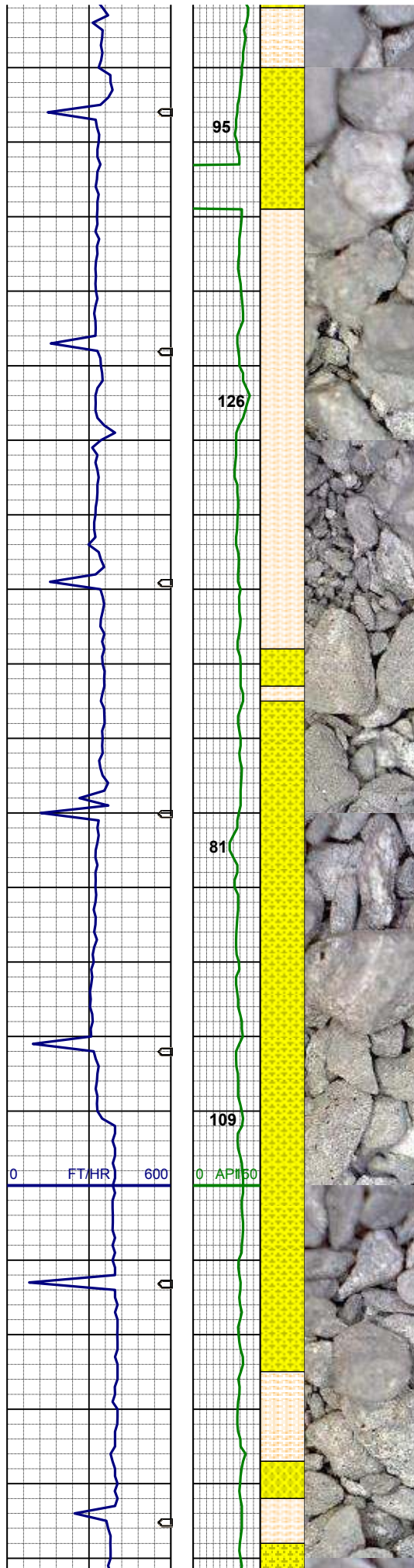
50% SS: wh-mgy, clr- trnsi, f-mgr,



50% SS: wh-mgy, clr- trnsi, i-migr,
mod srt, fri, p cmt, arg- sil mtx, sl calc,
tr biot, tr glau
50% SHYSS: vlt-mgy, trnsi- op, vf- ml,
sbrnnd, p-mod srt, sft -firm, arg mtx, p
-mod cmt, sl calc, tr biot
MD 1450'
INC 1.10°
AZI 297.66°
TVD 1449.9'

75% SHYSS: vlt-mgy, trnsi- op, vf- ml,
sbrnnd, p-mod srt, sft -firm, arg mtx, p
-mod cmt, sl calc, tr biot
25% SS: wh-mgy, clr- trnsi, f-migr,
mod srt, fri, p cmt, arg- sil mtx, sl calc,
tr biot, tr glau

WT 8.4 / VIS 28



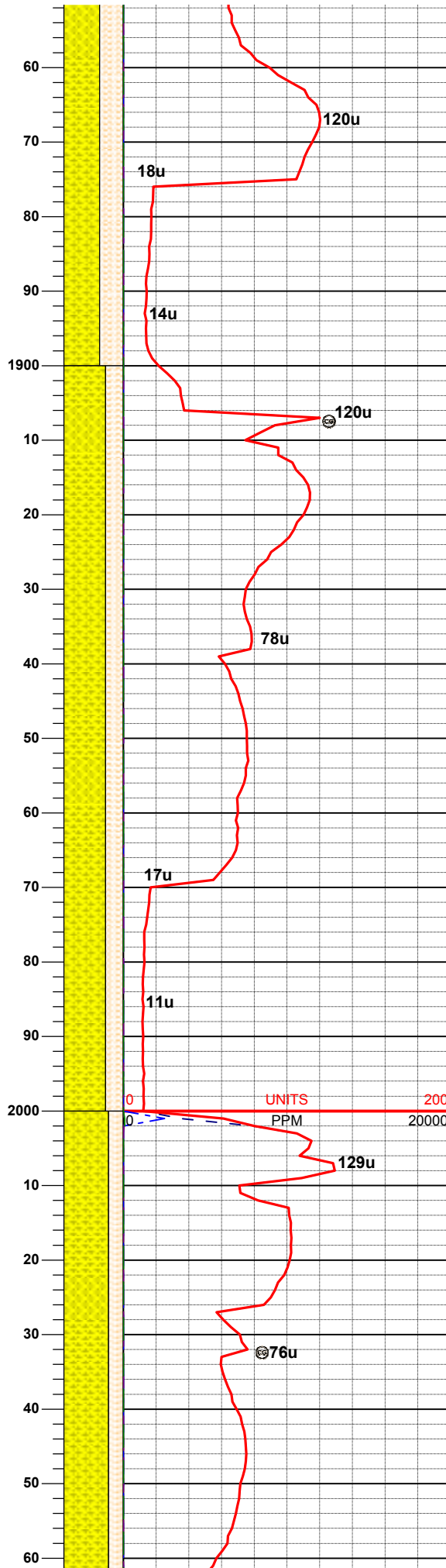
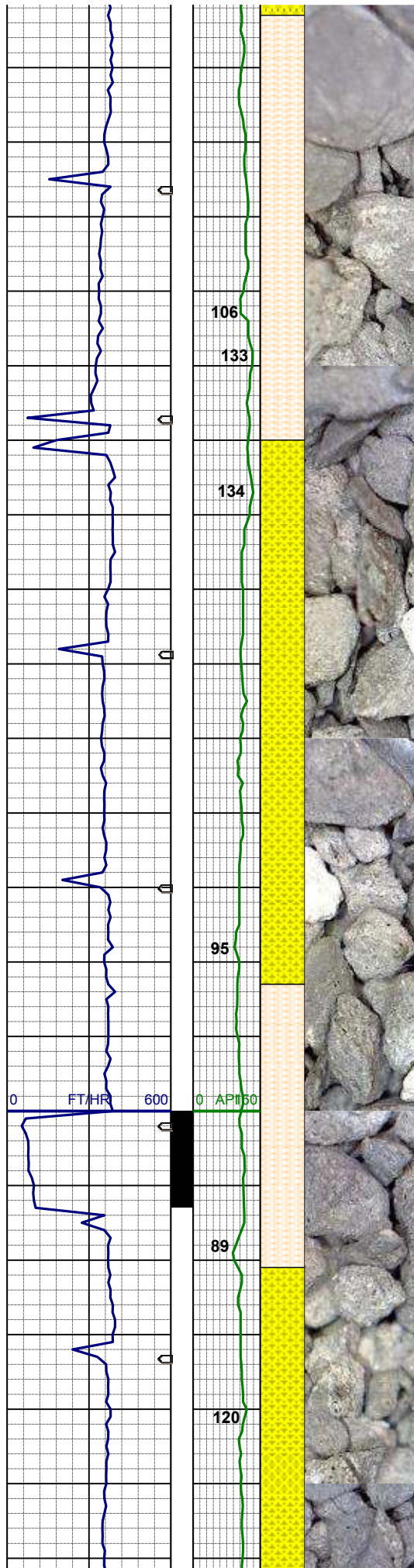
50% SHYSS: vlt-mgy, trnsl- op, vf- f
gr, sbrnnd, p-mod srt, sft -firm, arg
mtx, p-mod cmt, tr biot, tr glau
50% SHYSLTST: ltgy, sft- fri, sbblky-
sl sbply, slty tex, tr biot incl

MD 1733'
INC 1.47°
AZI 314.24°
TVD 1732.8'

75% SHYSS: vlt-mgy, trnsl- op, vf- f
gr, sbrnnd, p-mod srt, sft -firm, arg
mtx, p-mod cmt, tr biot, tr glau
25% SHYSLTST: ltgy, sft- fri, sbblky-
sl sbply, slty tex, tr biot incl

WT 8.4 / VIS 28

60% SHYSS: vlt-mgy, trnsl- op, vf- f
gr, sbrnnd, p-mod srt, sft -firm, arg
mtx, p-mod cmt, tr biot, tr glau
40% SHYSLTST: ltgy, sft- fri, sbblky-
sl sbply, slty tex, tr biot incl



40% SHYSLTST: ltgy, str- tri, sbbiky-
sl sbply, slty tex, tr biot incl

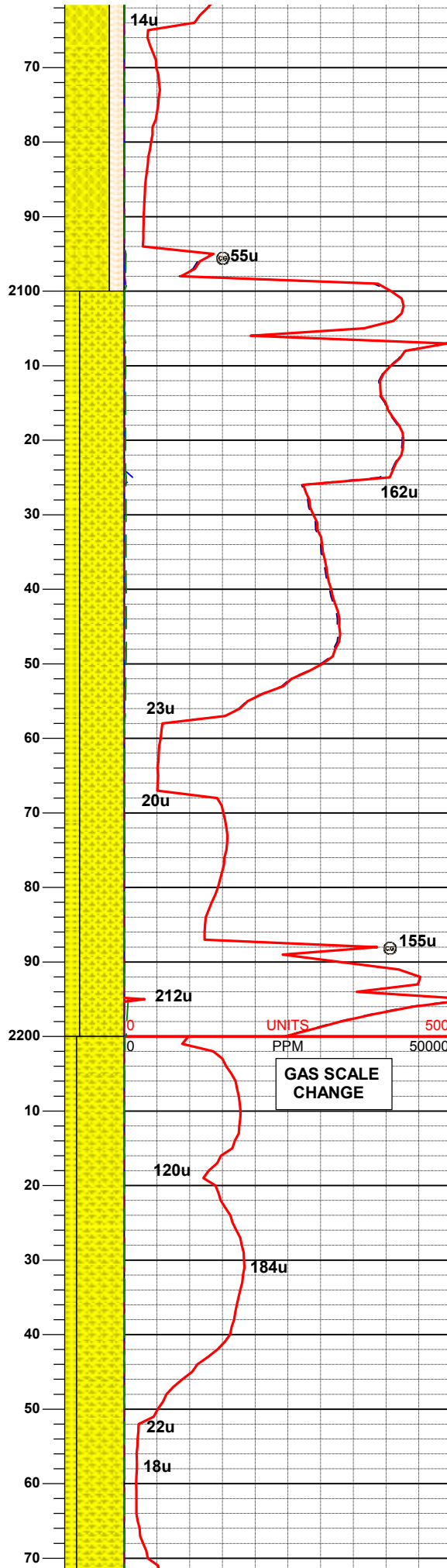
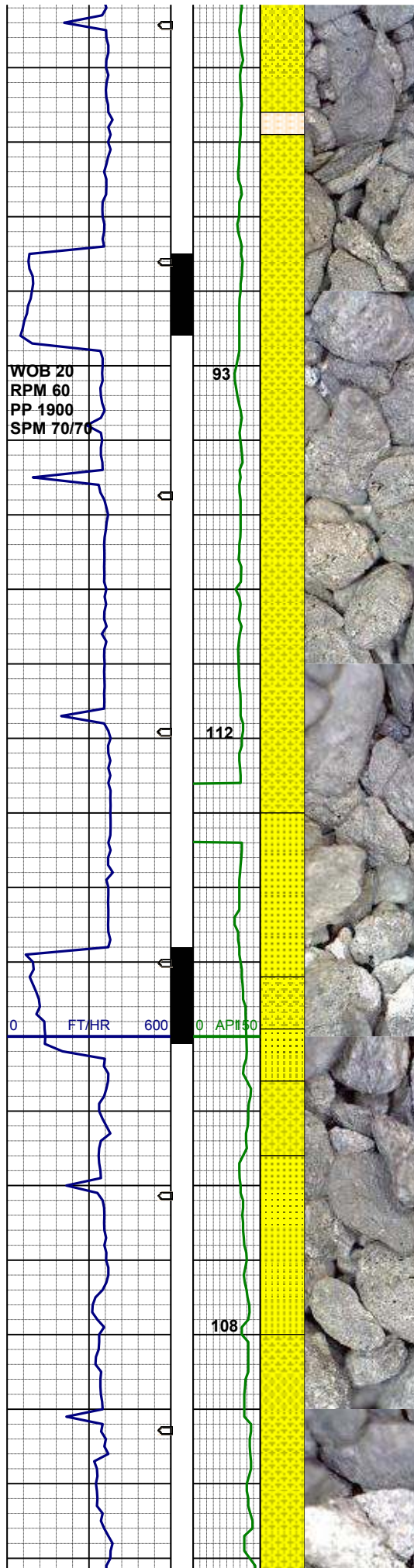
70% SHYSS: vlt-mgy, trnsl- op, vf- f
gr, sbrnnd, p-mod srt, sft -firm, arg
mtx, p-mod cmt, tr biot, tr glau
30% SHYSLTST: ltgy, sft- fri, sbbiky-
sl sbply, slty tex, tr biot incl

MD 1953'
INC 1.62°
AZI 303.46°
TVD 1952.7'

WT 8.4 / VIS 28

MD 2047'
INC 2.95°
AZI 339.40°
TVD 2046.7'

75% SHYSS: vlt-mgy, trnsl- op, vf- f
gr, sbrnnd, p-mod srt, sft -firm, arg
mtx, p-mod cmt, tr biot, tr glau
25% SHYSLTST: ltav. sft- fri. sbbiky-



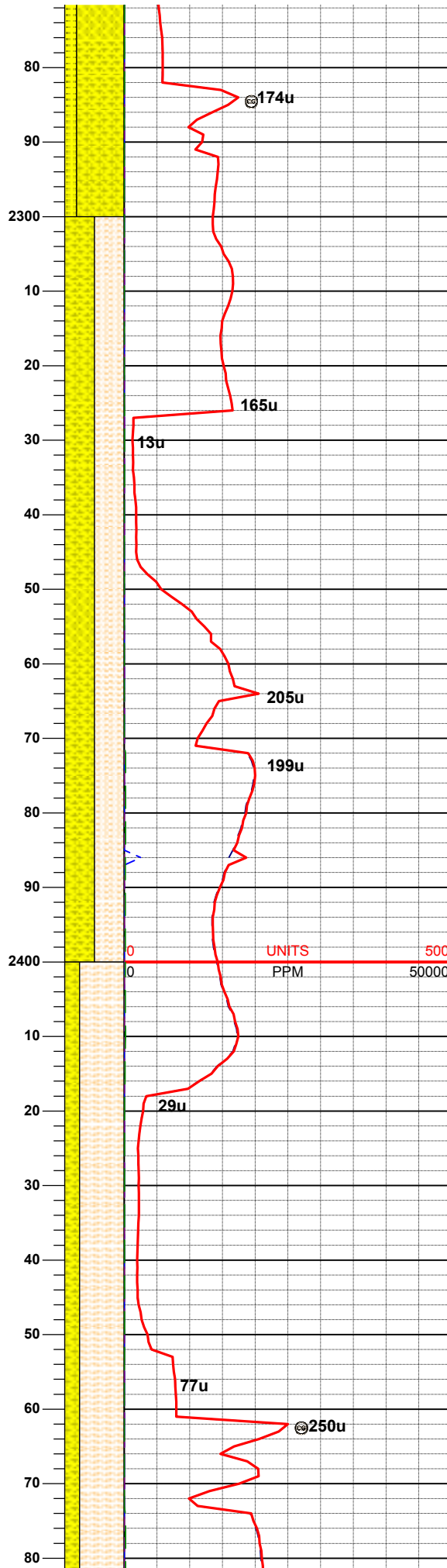
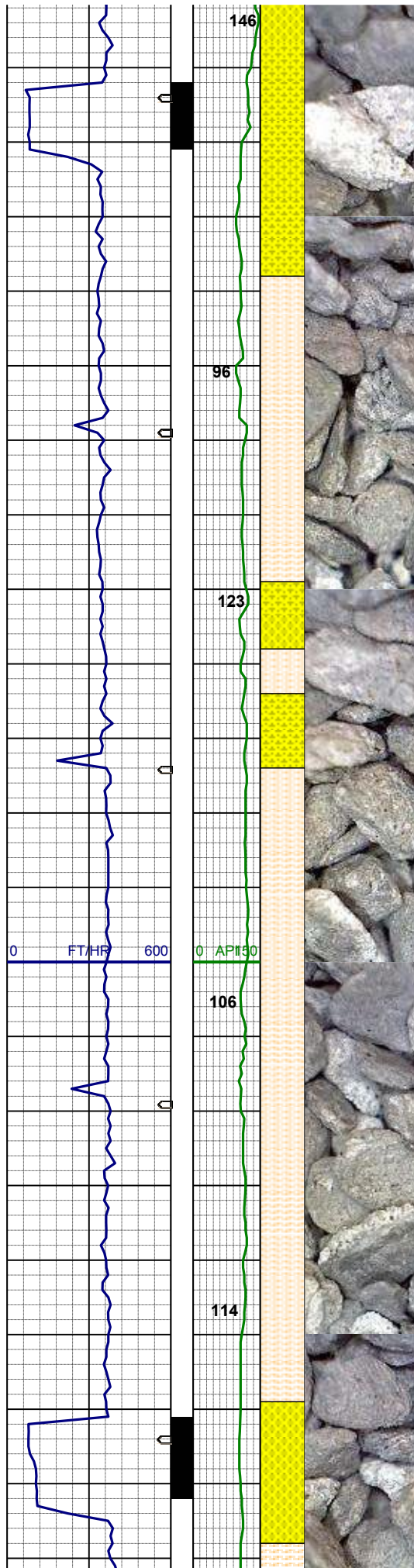
sl sbply, slty tex, tr biot incl

MD 2141'
INC 4.73°
AZI 342.27°
TVD 2140.4'

75% SHYSS: vlt-mgy, trnsi- op, vf- ml,
sbrndd, p-mod srt, sft -firm, arg mtx, p
-mod cmt, sl calc, tr biot
25% SS: wh-mgy, clr- trnsi, f-mgr,
mod srt, fri, p cmt, arg- sil mtx, sl calc,
tr biot, tr glau

MD 2235'
INC 6.74°
AZI 342.50°
TVD 2234.0'

80% SHYSS: vlt-mgy, trnsi- op, vf- ml,
sbrndd, p-mod srt, sft -firm, arg mtx, p
-mod cmt, sl calc, tr biot
20% SS: wh-mgy, clr- trnsi, f-mgr,
mod srt, fri, p cmt, arg- sil mtx, sl calc,
tr biot, tr glau

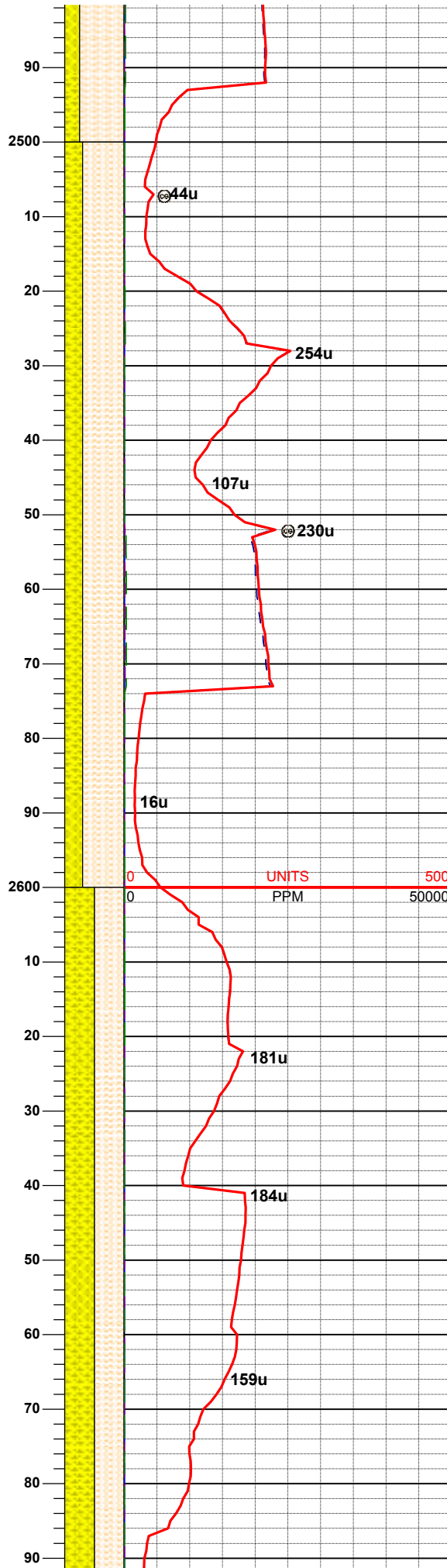
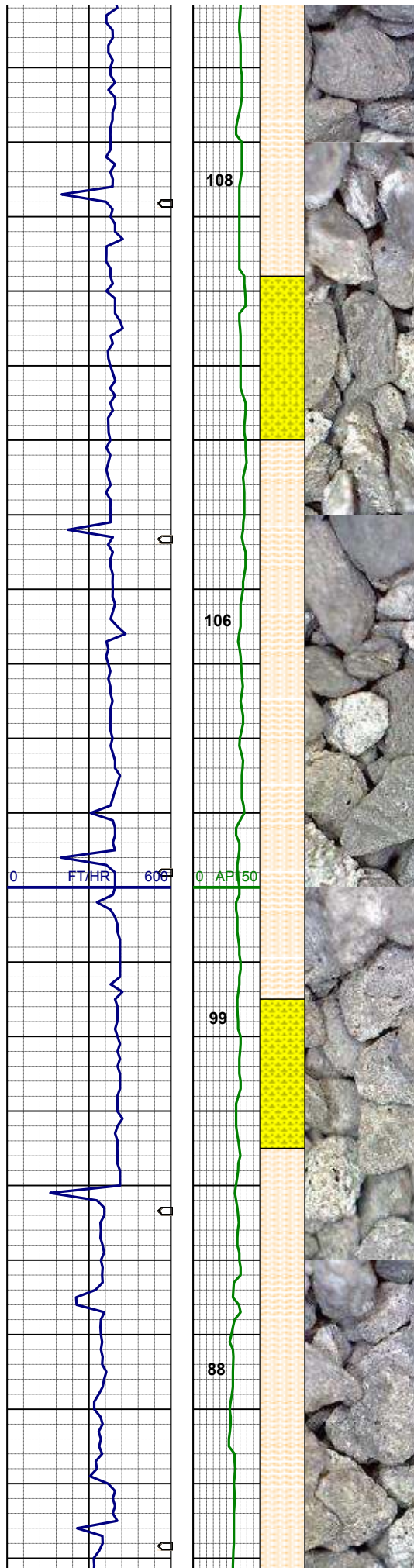


MD 2325'
INC 8.33°
AZI 332.41°
TVD 2323.2'

50% SHYSLTST: ltgy, sft- fri, sbblky-
sl sbply, slty tex, tr biot incl
50% SHYSS: vlt-mgy, trns- op, vf- ml
gr, sbrndd-sbang, p-mod srt, sft -firm,
arg mtx, p-mod cmt, tr biot, tr glau

MD 2415'
INC 7.80°
AZI 335.74°
TVD 2412.3'

75% SHYSLTST: ltgy, sft- fri, sbblky-
sl sbply, slty tex, tr biot incl
25% SHYSS: vlt-mgy, trns- op, vf- ml
gr, sbrndd-sbang, p-mod srt, sft -firm,
arg mtx, p-mod cmt, tr biot, tr glau,
mod calc



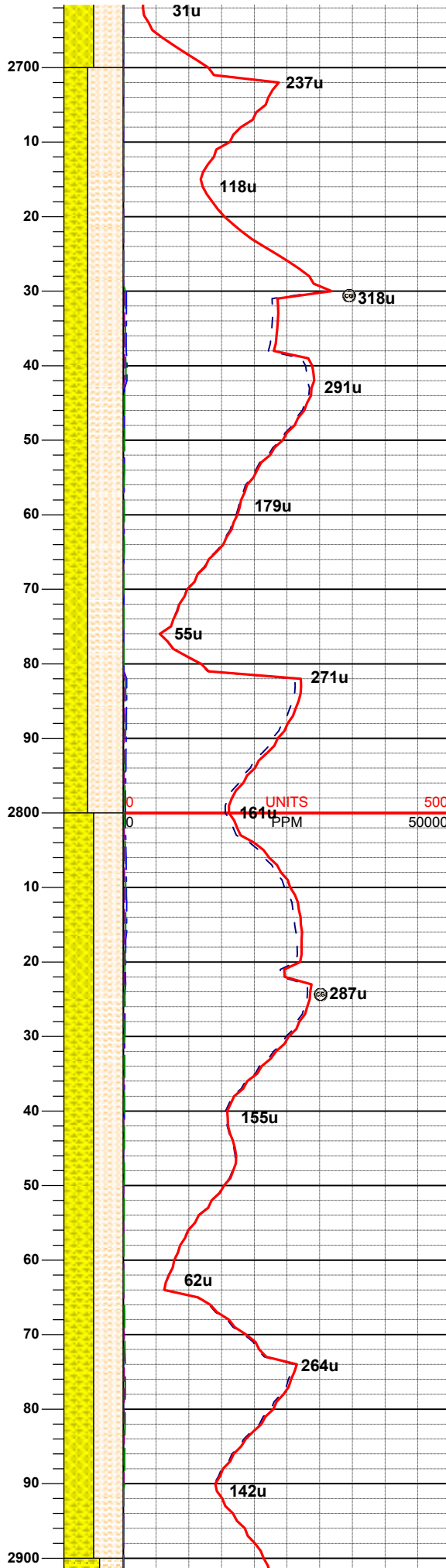
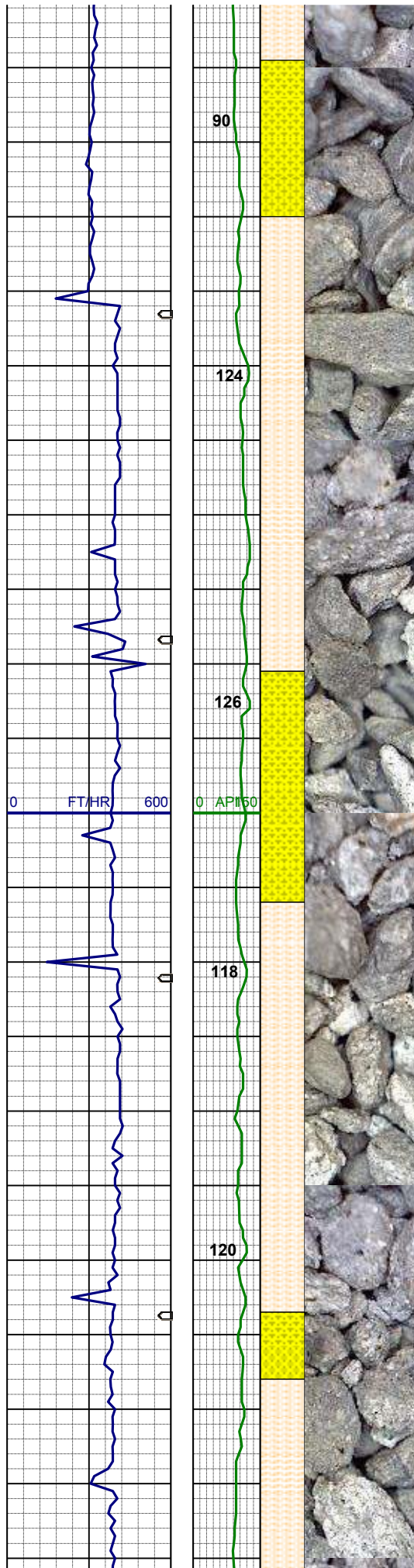
MD 2504'
INC 10.04°
AZI 335.87°
TVD 2500.2'

70% SHYSLTST: ltgy, sft- fri, sbbkly-
sl sbpity, slty tex, tr biot incl
30% SHYSS: vlt-mgy, trnsi- op, vf- ml
gr, sbrndd-sbang, p-mod srt, sft -firm,
arg mtx, p-mod cmt, tr biot, tr glau,
mod calc

MD 2594'
INC 9.92°
AZI 337.13°
TVD 2588.9'

50% SHYSLTST: ltgy, sft- fri, sbbkly-
sl sbpity, slty tex, tr biot incl
50% SHYSS: vlt-mgy, trnsi- op, vf- ml
gr, sbrndd-sbang, p-mod srt, sft -firm,
arg mtx, p-mod cmt, tr biot, tr glau,
mod calc

MD 2684'
INC 10.67°
AZI 339.17°
TVD 2677.4'



WT 8.4 / VIS 28

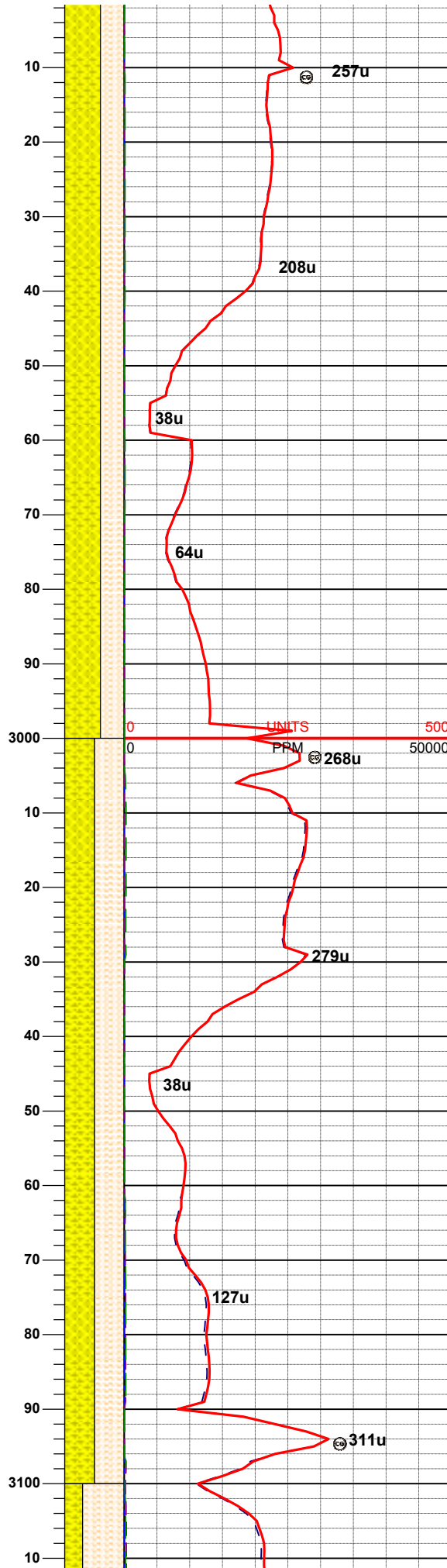
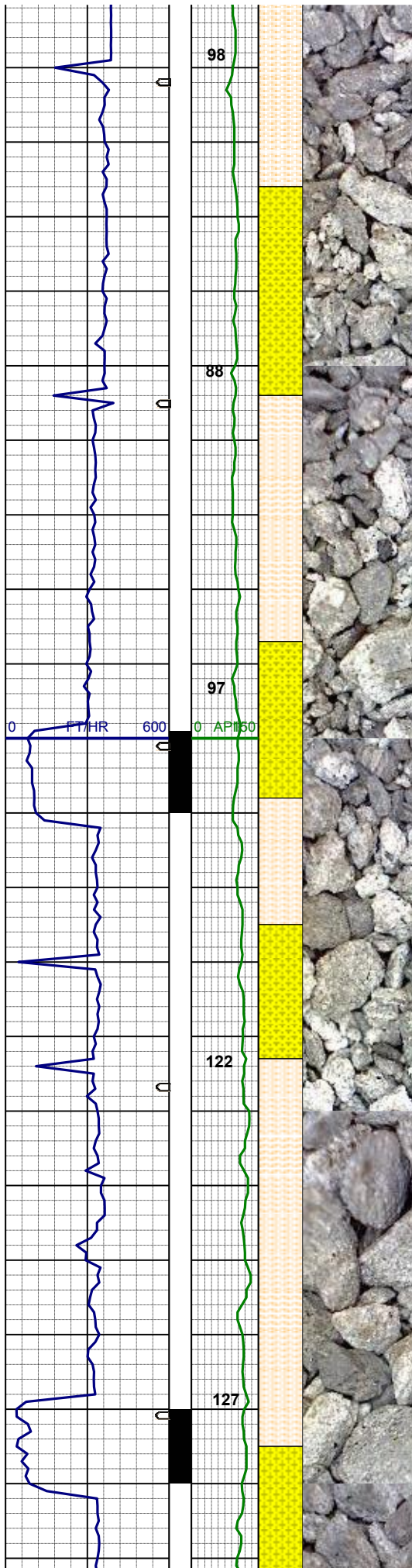
60% SHYSLTST: pred lt gy, sft-firm, sbblky, sb plty, silty tex
40% SHYSS: off wh - lt gy, trnsl - op, vf - f gr, sb ang, sb mdd, mod srt, sft - frm, arg mtx, tr glau, sl calc

MD 2773'
INC 10.74°
AZI 337.41°
TVD 2764.9'

50% SHYSLTST: pred lt gy, sft-firm, sbblky, sb plty, silty tex
50% SHYSS: off wh - lt gy, trnsl - op, vf - f gr, sb ang, sb mdd, mod srt, sft - frm, arg mtx, tr glau, sl calc

MD 2863'
INC 10.77°
AZI 338.88°
TVD 2853.3'

WT 8.4 / VIS 28



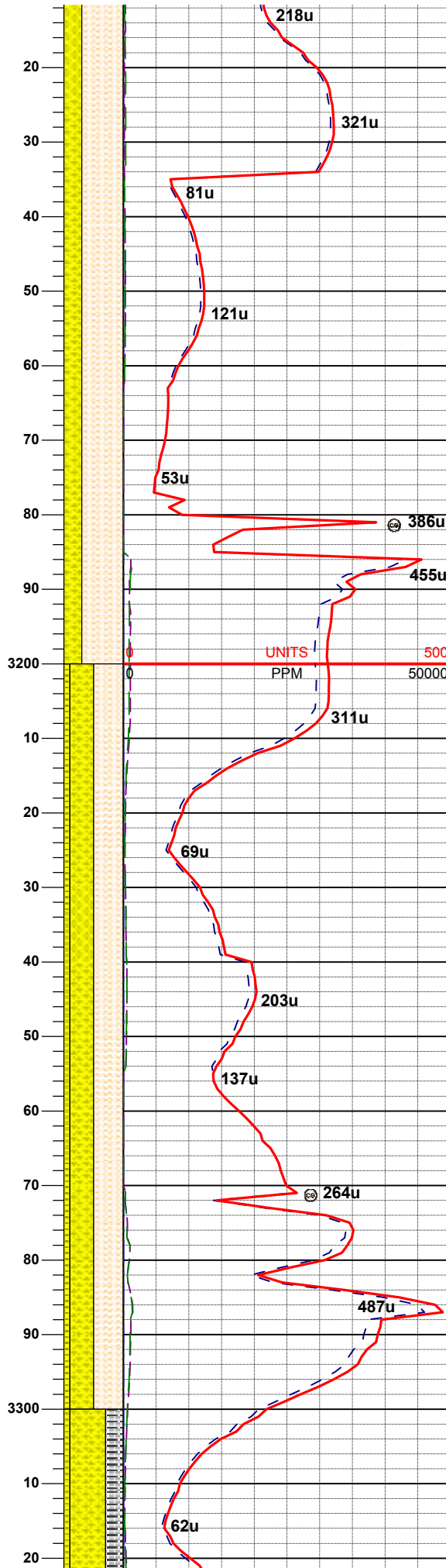
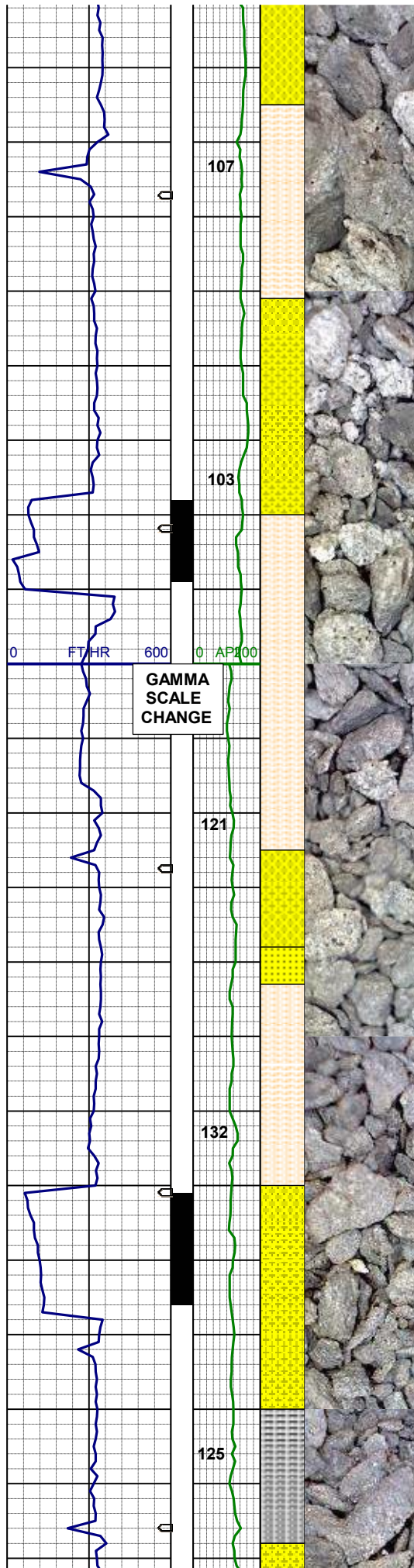
MD 2952'
INC 10.58°
AZI 339.40°
TVD 2940.7'

60% SHYSS: off wh - lt gy, trnsi - op,
vf - f gr, sb ang, sb rndd, mod srt, sft -
frm, arg mtx, tr glau, sl calc
40% SHYSLTST: pred lt gy, sft-firm,
sbbiky, sb plty, silty tex

MD 3042'
INC 8.46°
AZI 336.09°
TVD 3029.5'

50% SHYSLTST: pred lt gy, sft-firm,
sbbiky, sb plty, silty tex
50% SHYSS: off wh - lt gy, trnsi - op,
vf - f gr, sb ang, sb rndd, mod srt, sft -
frm, arg mtx, tr glau, sl calc

WT 8.4 / VIS 28



MD 3132'
INC 6.25°
AZI 337.92°
TVD 3118.7'

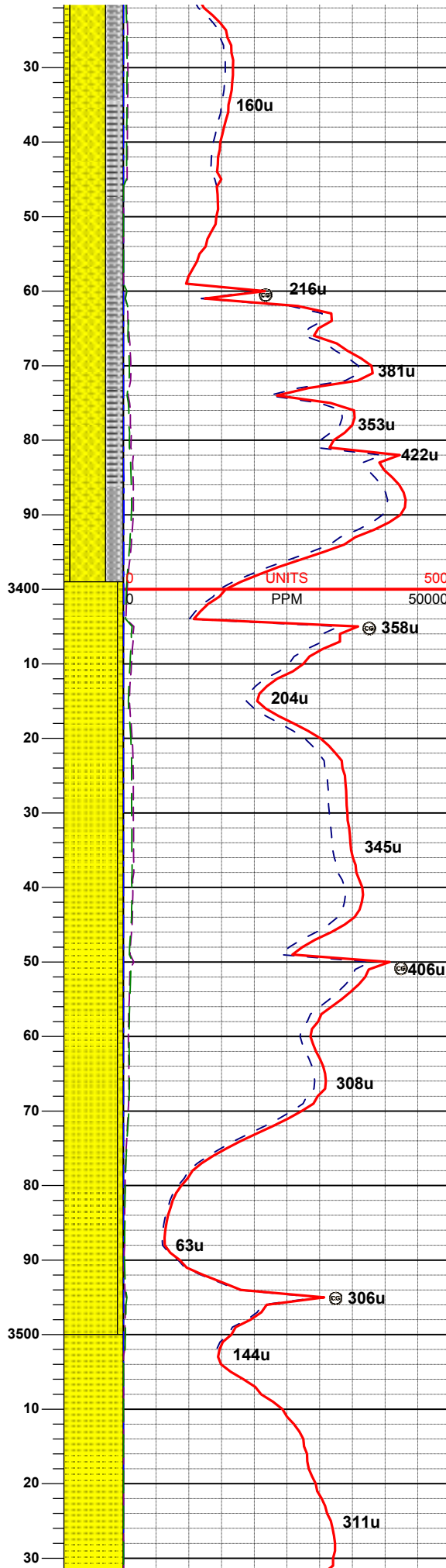
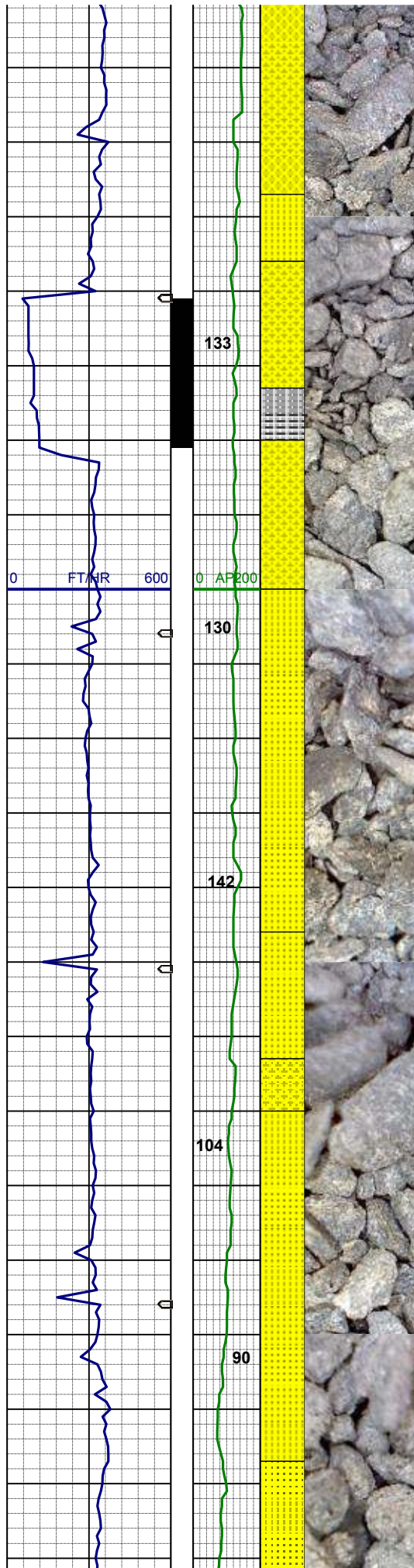
70% SHYSLTST: pred lt gy, sft-firm, sbbiky, sb plty, silty tex
30% SHYSS: off wh - lt gy, trnsi - op, vf - f gr, sb ang, sb rndd, mod srt, sft - frm, arg mtx, tr glau, sl calc

MD 3221'
INC 4.65°
AZI 337.63°
TVD 3207.3'

50% SHYSLTST: pred lt gy, sft-firm, sbbiky, sb plty, silty tex
40% SHYSS: off wh - lt gy, trnsi - op, vf - f gr, sb ang, sb rndd, mod srt, sft - frm, arg mtx, tr glau, sl calc
10% SS: wh - lt gy, trnsi, vf-f gr, w occ lse trnsi gr, sb ang, sbrondd-rndd, por -mod srt, pred firm, sil-arg mtx, tr glau, sl - mod calc

WT 8.45 / VIS 28

MD 3311'
INC 3.57°
AZI 298.14°
TVD 3297.1'



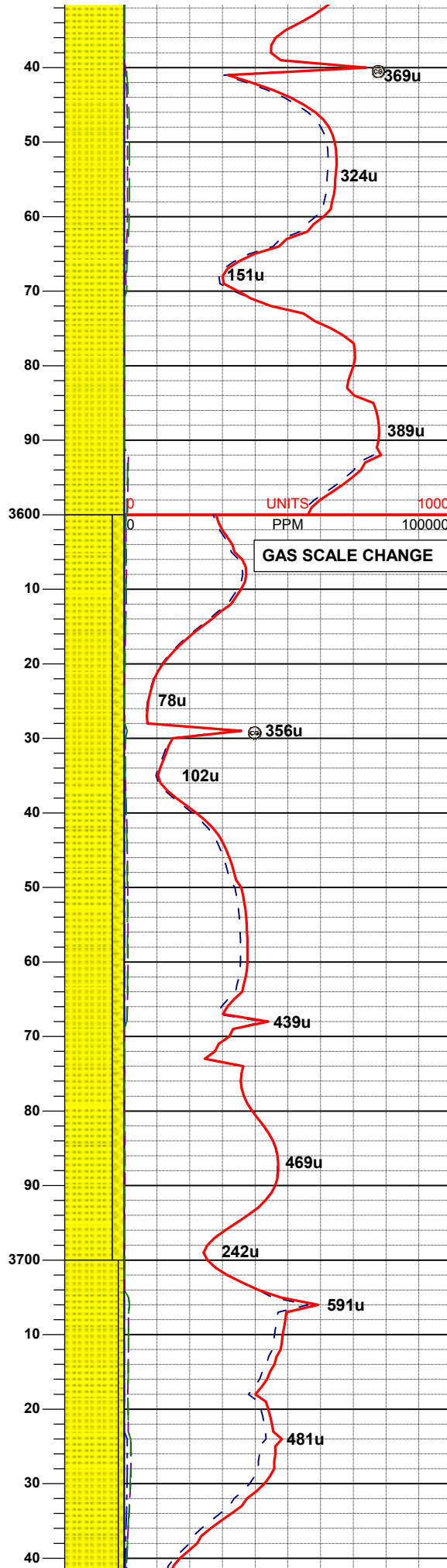
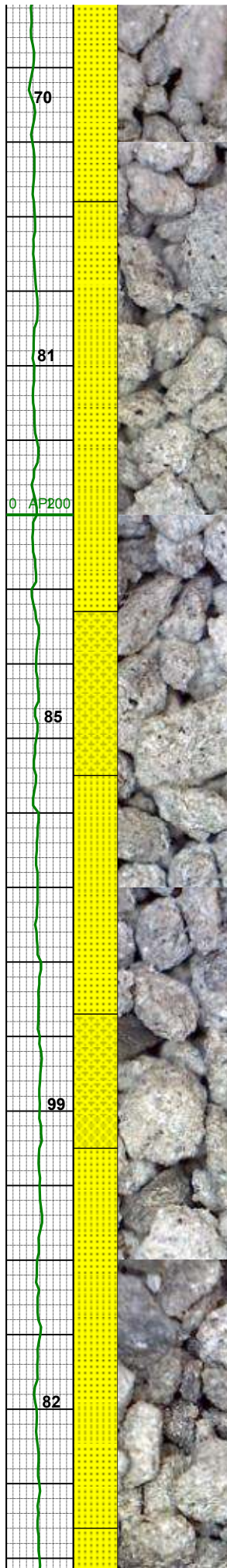
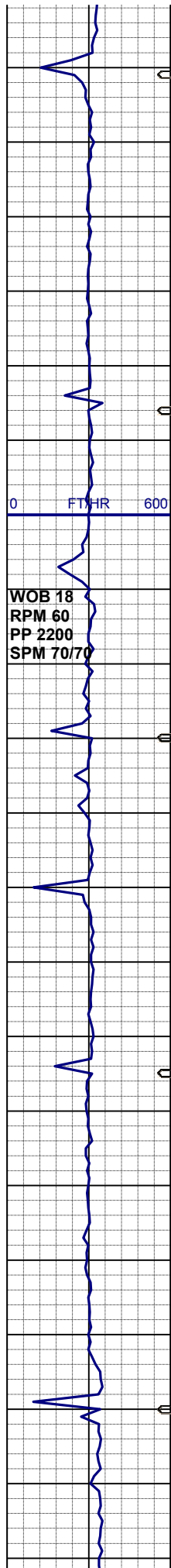
60% SHYSS: ltgy-tr s&p, vf-fgr, sbrd - sbang, mod srt, firm- fri, p por, arg cmt, mod biot, tr glau
 30% SLTYSH: mgy- gybrn, sft- mod firm, sbrnnd- sbply, occ sbbiky, shy tex
 10% SS: wh, op, trns, vf- f gr, occ m gr, mod srt, sbrnnd, sbang, pred firm, occ fri clus, sil mt, non calc, tr glau

MD 3401'
 INC 0.55°
 AZI 168.23°
 TVD 3387.1'

90% SS: wh, op, trns, vf- f gr, occ m gr, mod srt, sbrnnd, sbang, pred firm, occ fri clus, sil mt, non calc, tr glau
 10% SHYSS: off wh - lt gy, trns - op, vf - f gr, sb ang, sb rndd, mod srt, sft - frm, arg mt, tr glau, sl calc

WT 8.45 / VIS 28

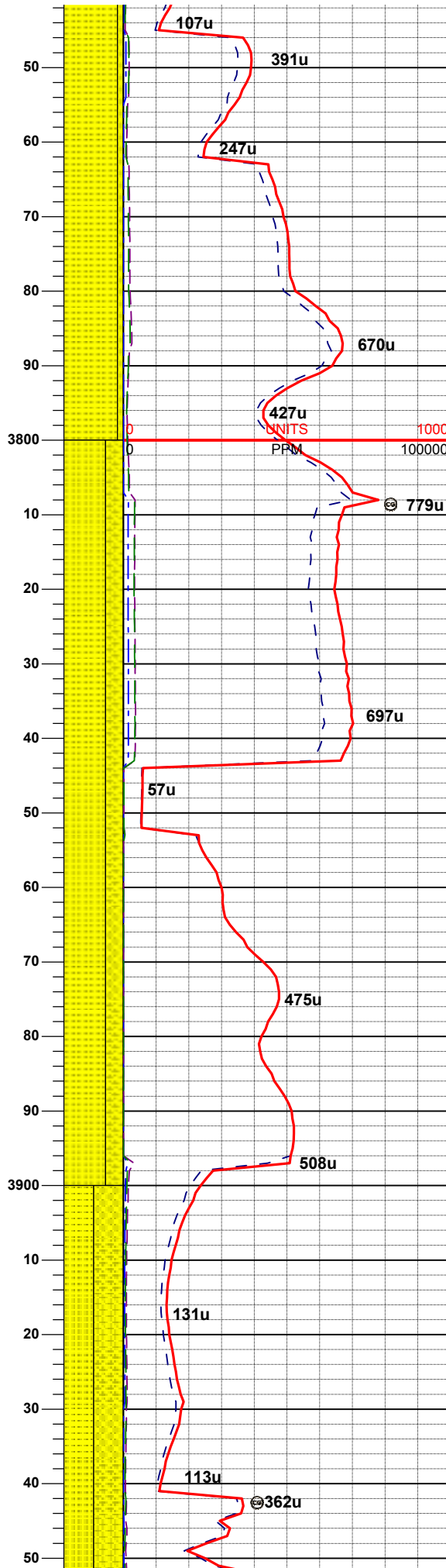
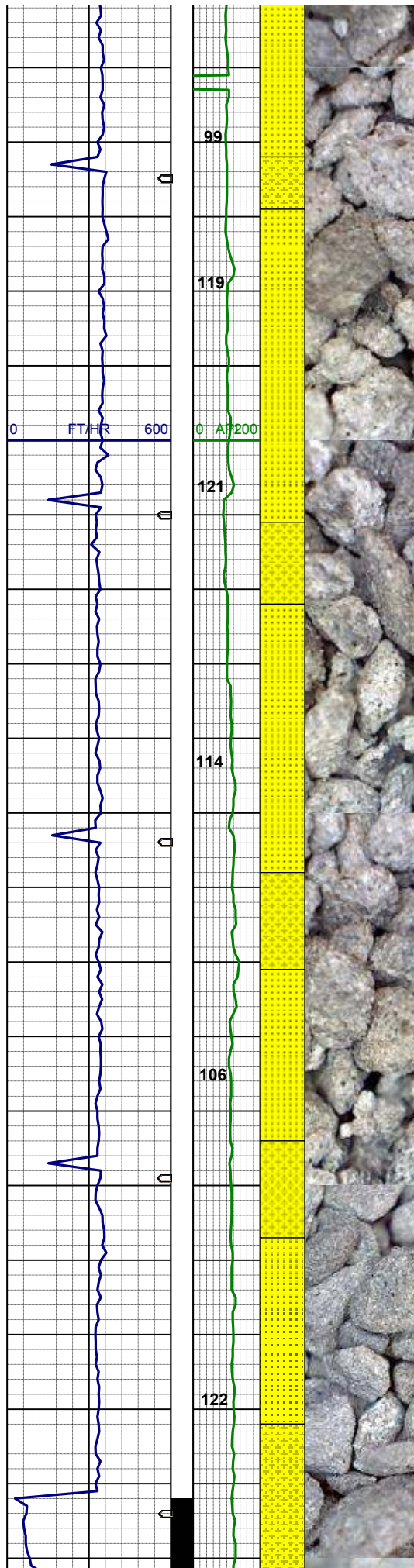
MD 3491'
 INC 0.86°
 AZI 181.99°
 TVD 3477.1'



100% SS: wh, op, trnsI, vf- f gr, occ m
gr, mod srt, sbrnnd, sbang, pred firm,
occ fri clus, sil mtX, non calc, tr glau

80% SS: wh, op, trnsI, vf- f gr, occ m
gr, mod srt, sbrnnd, sbang, pred firm,
occ fri clus, sil mtX, non calc, tr glau
20% SHYSS: off wh - lt gy, trnsI - op,
vf - f gr, sb ang, sb rndd, mod srt, sft -
frm, arg mtX, tr glau, sl calc

WT 8.45 / VIS 28



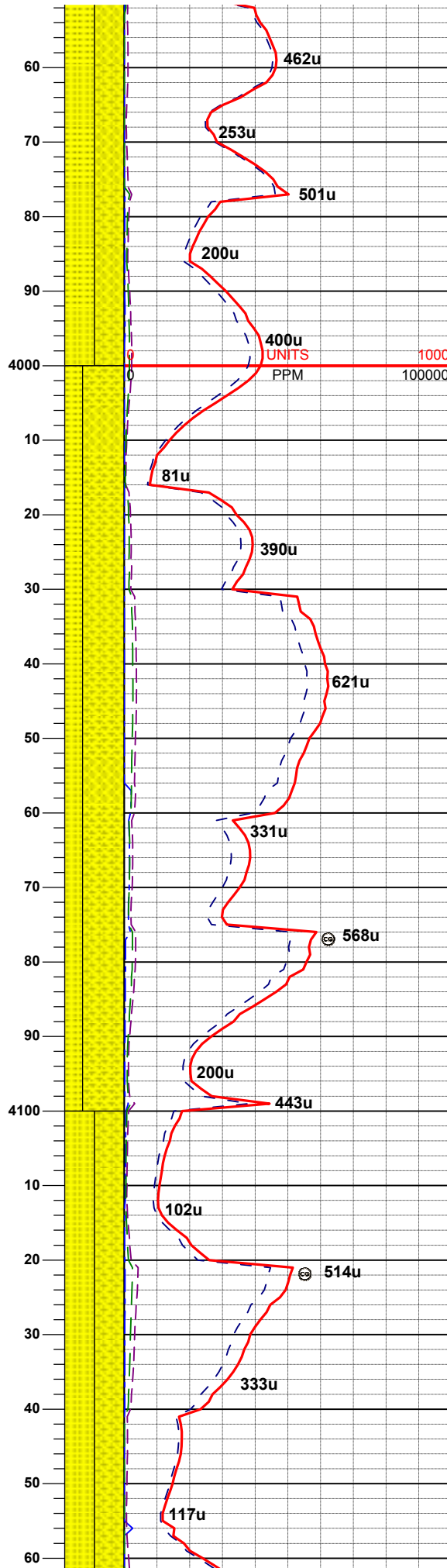
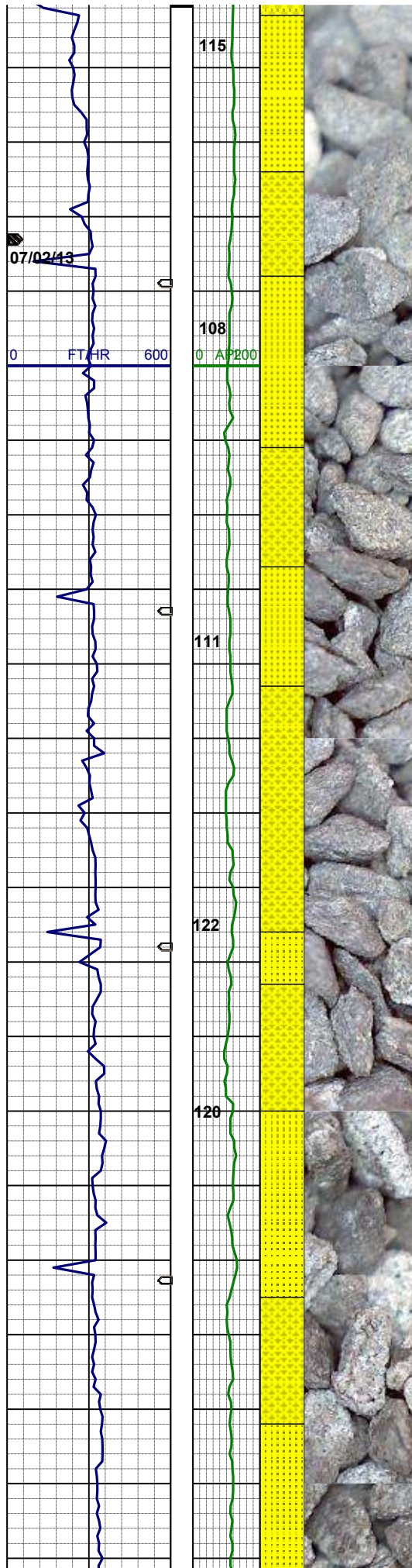
90% SS: wh, op, trnsl, vf- f gr, occ m gr, mod srt, sbrnld, sbang, pred firm, occ fri clus, sil mtz, non calc, tr glau
10% SHYSS: off wh - lt gy, trnsl - op, vf - f gr, sb ang, sb rdd, mod srt, sft - frm, arg mtz, tr glau, sl calc

MD 3760'
INC 0.19°
AZI 122.84°
TVD 3746.1'

70% SS: wh, op, trnsl, vf- f gr, occ m gr, mod srt, sbrnld, sbang, pred firm, occ fri clus, sil mtz, non calc, tr glau
30% SHYSS: off wh - lt gy, trnsl - op, vf - f gr, sb ang, sb rdd, mod srt, sft - frm, arg mtz, tr glau, sl calc

WT 8.4/ VIS 28

50% SS: wh, op, trnsl, vf- f gr, occ m gr, mod srt, sbrnld, sbang, pred firm, occ fri clus, sil mtz, non calc, tr glau
50% SHYSS: off wh - lt gy, trnsl - op, vf - f gr, sb ang, sb rdd, mod srt, sft - frm, arg mtz, tr glau, sl calc



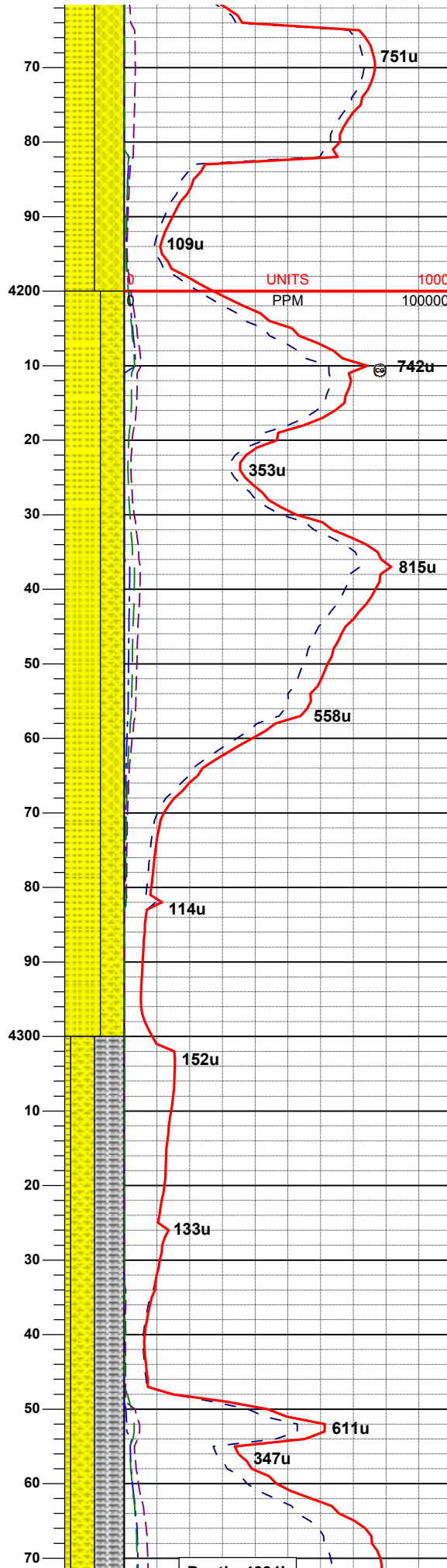
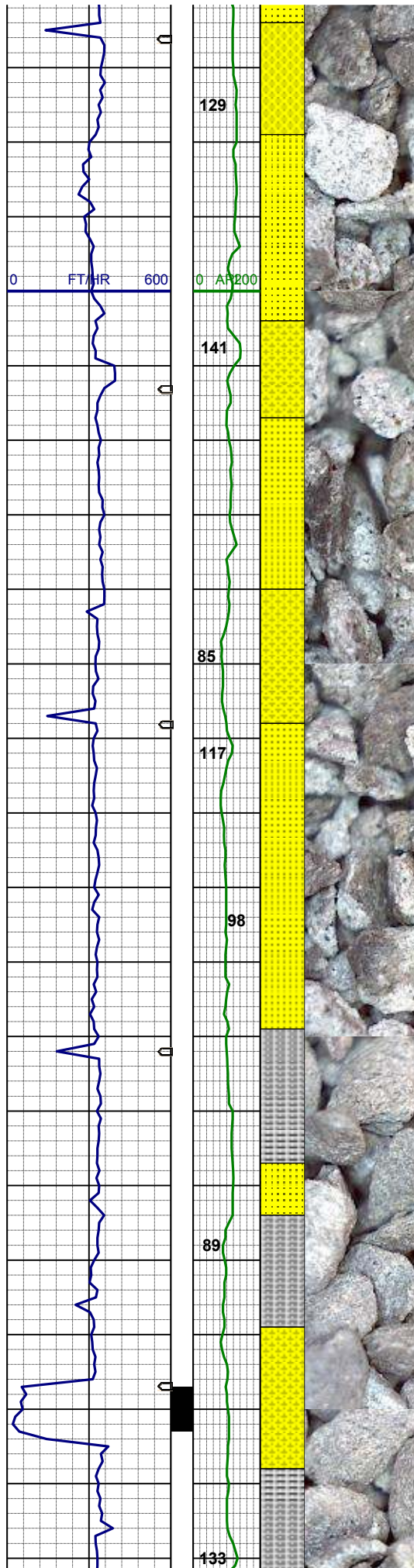
vr - r gr, sb ang, sb rndd, mod srt, srt - frm, arg mtx, tr glau, sl calc

MD 4028'
INC 0.65°
AZI 331.38°
TVD 4014.0'

70% SHYSS: off wh - lt gy, trnsi - op, vf - f gr, sb ang, sb rndd, mod srt, sft - frm, arg mtx, tr glau, sl calc
30% SS: wh, op, trnsi, vf - f gr, occ m gr, mod srt, sb rndd, sbang, pred firm, occ fri clus, sil mtx, non calc, tr glau

WT 8.45 / VIS 28

50% SS: wh, op, trnsi, vf - f gr, occ m gr, mod srt, sb rndd, sbang, pred firm, occ fri clus, sil mtx, non calc, tr glau
50% SHYSS: off wh - lt gy, trnsi - op, vf - f gr, sb ang, sb rndd, mod srt, sft - frm, arg mtx, tr glau, sl calc

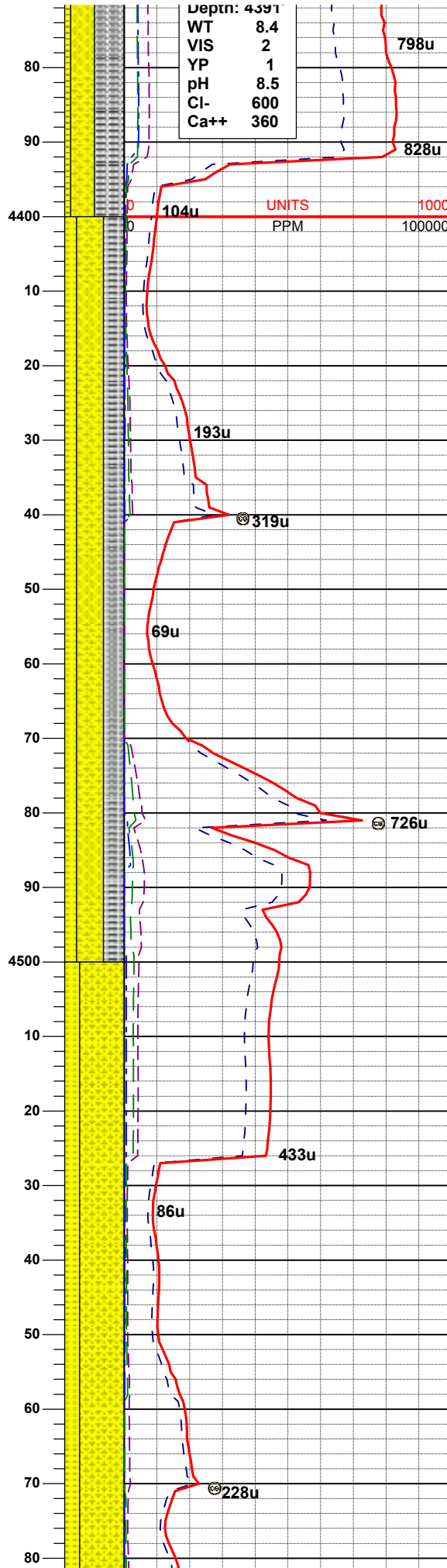
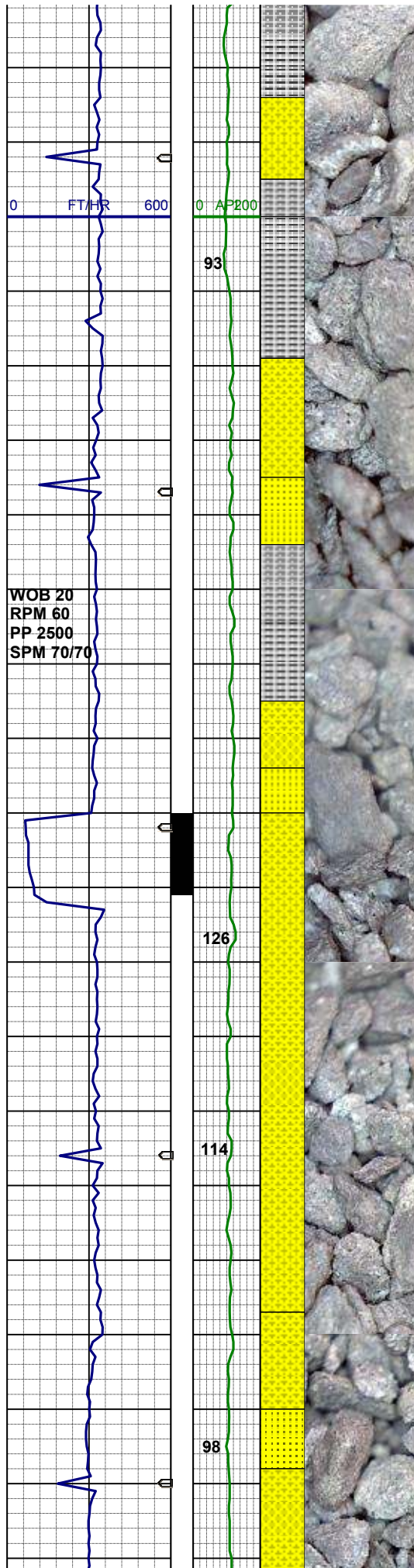


60% SS: wh, op, trnsi, vf- f gr, occ m gr, mod srt, sbrnnd, sbang, pred firm, occ fri clus, sil mtz, non calc, tr glau
 40% SHYSS: off wh - lt gy, trnsi - op, vf - f gr, sb ang, sb rndd, mod srt, sft - frm, arg mtz, tr glau, sl calc

MD 4297'
 INC 1.25°
 AZI 315.08°
 TVD 4283.0'

WT 8.4 / VIS 27

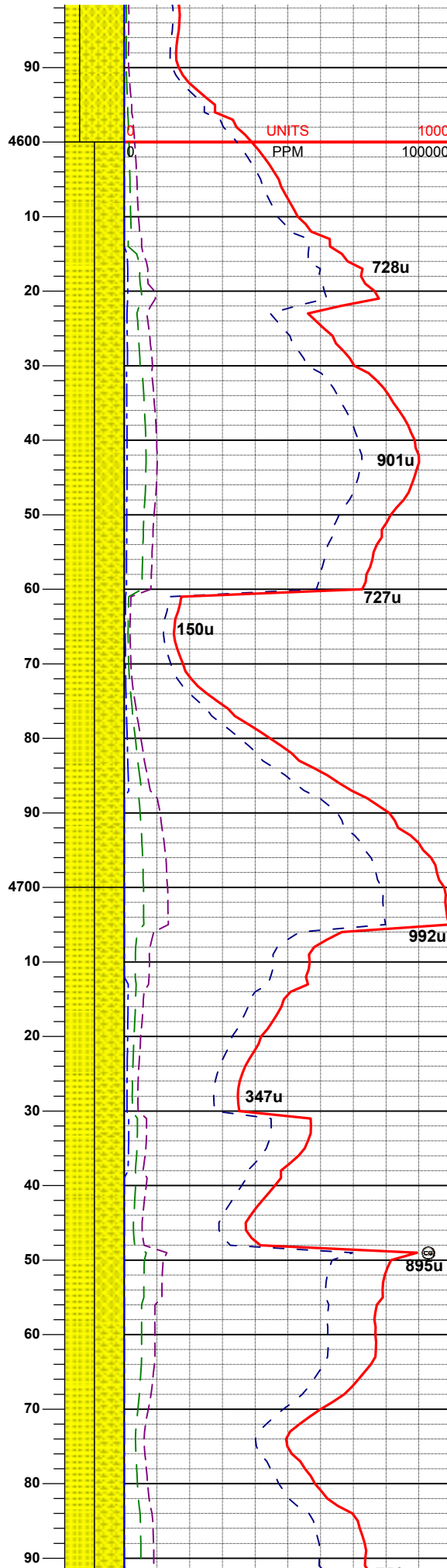
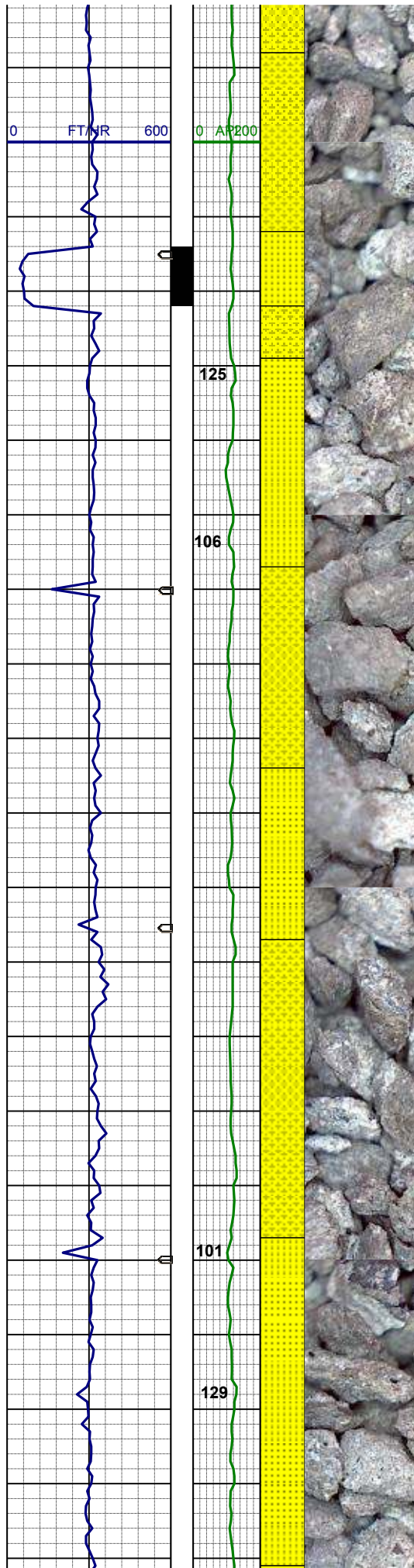
50% SLTYSH: mgy- dkgy, mod- firm, sbrnnd- sbplty, occ sbbiky, shy-slty tex
 40% SHYSS: wh - lt gy, trnsi - op, vf - f gr, sb ang, sb rndd, mod srt, sft - frm, arg mtz, tr glau, sl calc
 10% SS: wh, op, trnsi, vf- f gr, occ m gr, mod srt, sbrnnd, sbang, pred firm, occ fri clus, sil mtz, non calc, tr glau



45% SHYSS: wh - lt gy, trnsl - op, vf - f gr, sb ang - sb rndd, mod-p srt, sft - frm, arg mtx, tr glau, sl calc
 35% SLTYSH: mgy- dkgy, mod- firm, sbrnrd- sbply, occ sbbiky, shy-sltly tex
 20% SS: wh, op, trnsl, vf- f gr, occ m gr, mod srt, sbrnrd, sbang, pred firm, occ fri clus, sil mtx, non calc, tr glau

75% SHYSS: wh - lt gy, trnsl - op, vf - f gr, sb ang - sb rndd, mod-p srt, sft - frm, arg mtx, tr glau, sl calc
 25% SS: wh, op, trnsl, vf- f gr, occ m gr, mod srt, sbrnrd, sbang, pred firm, occ fri clus, sil mtx, non calc, tr glau

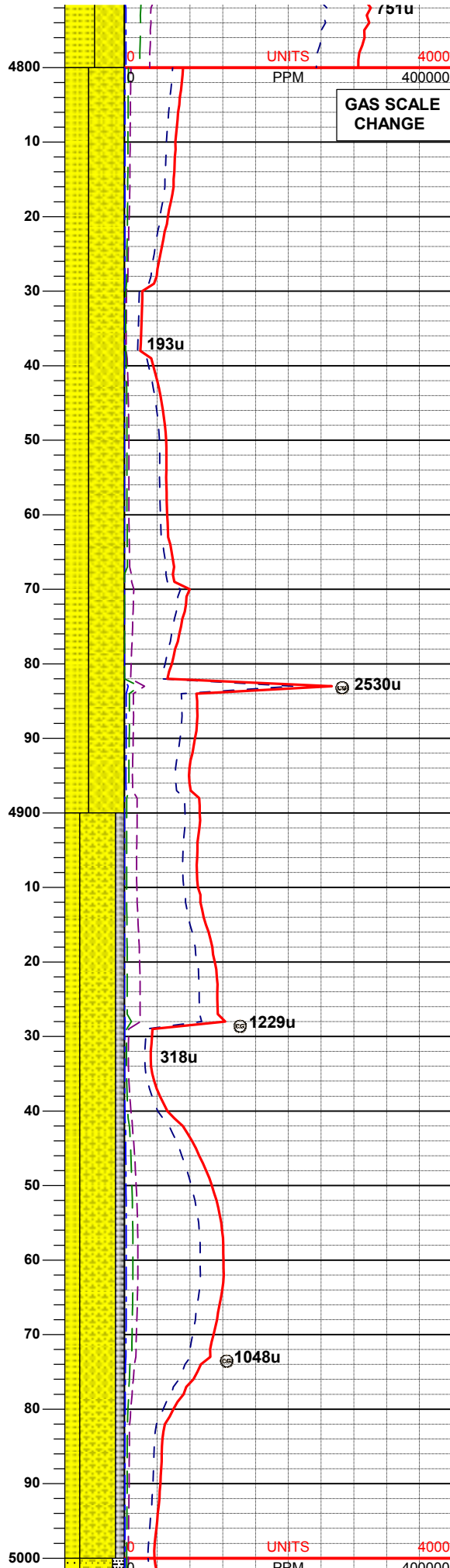
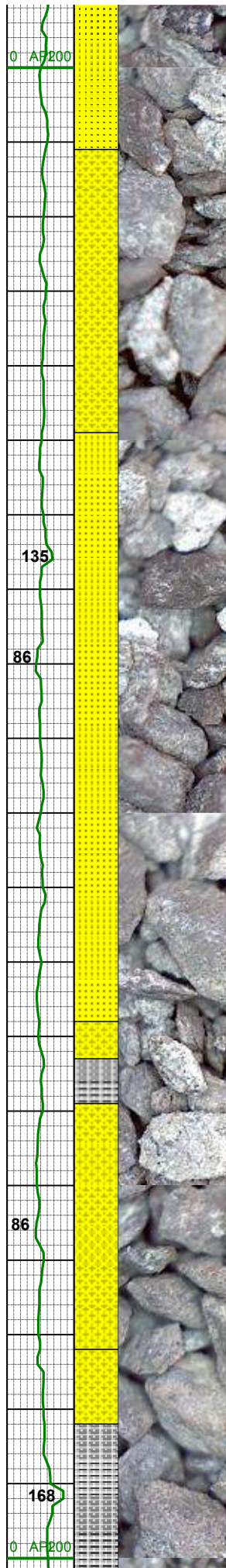
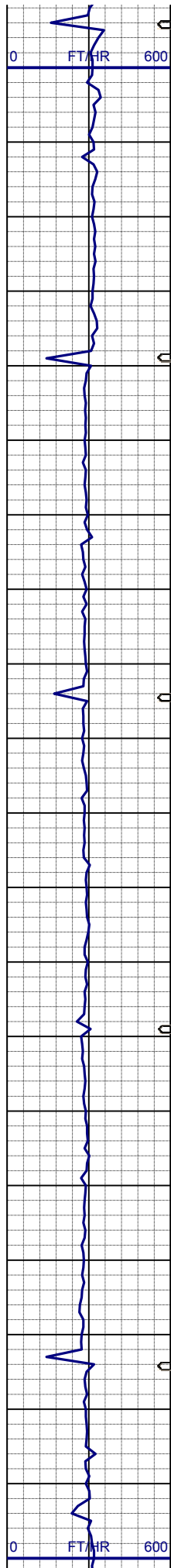
MD 4566'
 INC 1.86°
 AZI 36.82°
 TVD 4551.9'



50% SHYSS: wh - lt gy, trnsi - op, vf - f gr, sb ang - sb rndd, mod-p srt, sft - frm, arg mtz, tr glau, sl calc
 50% SS: wh, op, trnsi, vf - f gr, occ m gr, mod srt, sbmdd, sbang, pred firm, occ fri clus, sil mtz, non calc, tr glau

WT 8.6 / VIS 30

50% SHYSS: lt gy - dk gy, trnsi - op, vf - f gr, sb ang - sb rndd, mod-p srt, sft - frm, arg mtz, tr glau, sl calc
 50% SS: wh, op-trnsi, vf - f gr, occ ml gr, mod srt, sbmdd-sbang, pred firm, occ fri clus, sil mtz, non calc, tr glau

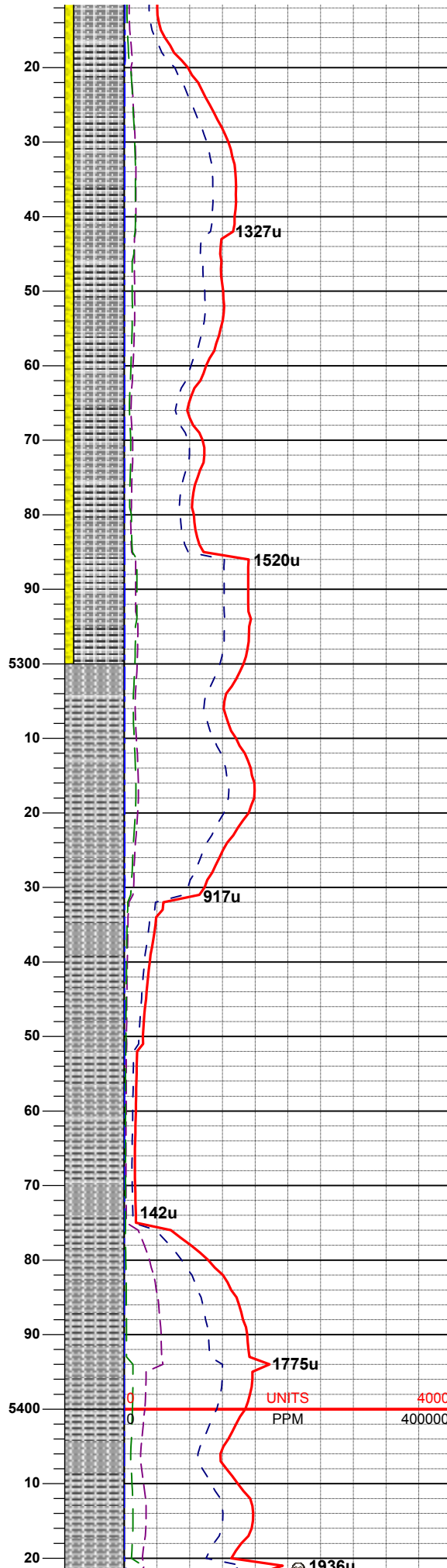
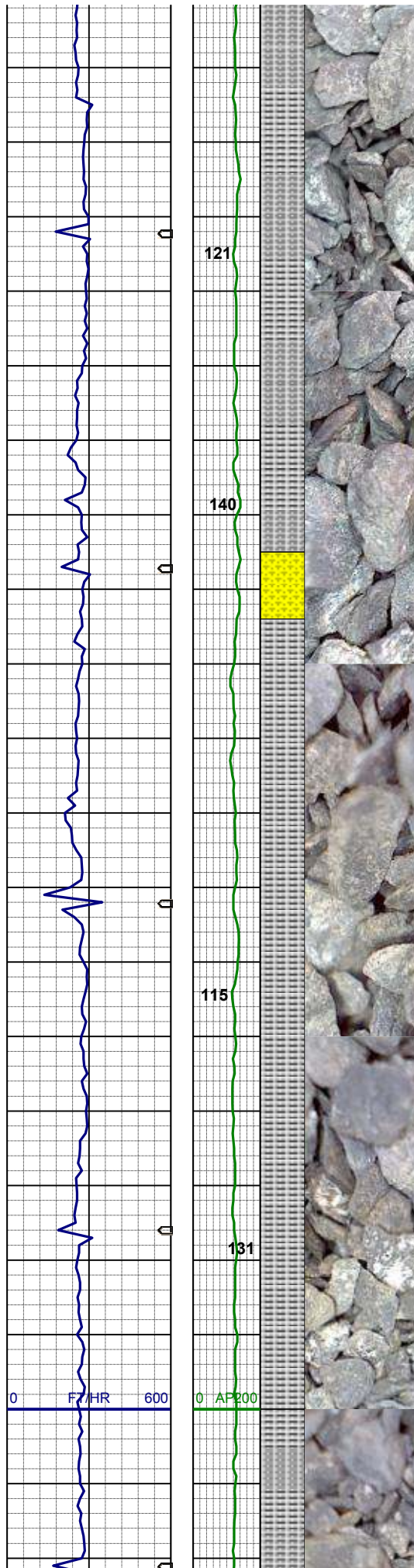


MD 4835'
INC 0.64°
AZI 185.95°
TVD 4820.9'

60% SHYSS: lt gy - dk gy, trnsl - op,
vf - f gr, sb ang - sb rndd, mod-p srt,
sft - frm, arg mtx, tr glau, sl calc
40% SS: wh, op-trnsl, vf- f gr, occ ml
gr, mod srt, sbrrdd-ang, pred firm,
occ fri clus, sil mtx, non calc, tr glau

60% SHYSS: lt gy - dk gy, trnsl - op,
vf - f gr, sb ang - sb rndd, mod-p srt,
sft - frm, arg mtx, tr glau, sl calc
25% SS: wh, op-trnsl, vf- f gr, occ ml
gr, mod srt, sbrrdd-ang, pred firm,
occ fri clus, sil mtx, non calc, tr glau
15% SLTYSH: mgy- dkgy, mod- firm,
fis, sbpity-sbblky, shy-silty tex, mod
calc

WT 8.8 / VIS 44



85% SLTYSH: mgy- dkgy, mod- firm,
fis, sbply-sbblky, shy-slty tex
15% SHYSS: lt gy - dk gy, mod trnsi,
vf - f gr, sbang - sbrndd, mod-p srt, sft
-frm, arg mtx, tr glau, tr biot, mod calc

WT 9.5 / VIS 38

100% SLTYSH: mgy- dkgy, sft-mod
firm, sme fis, sbply-sbblky, shy-slty
tex

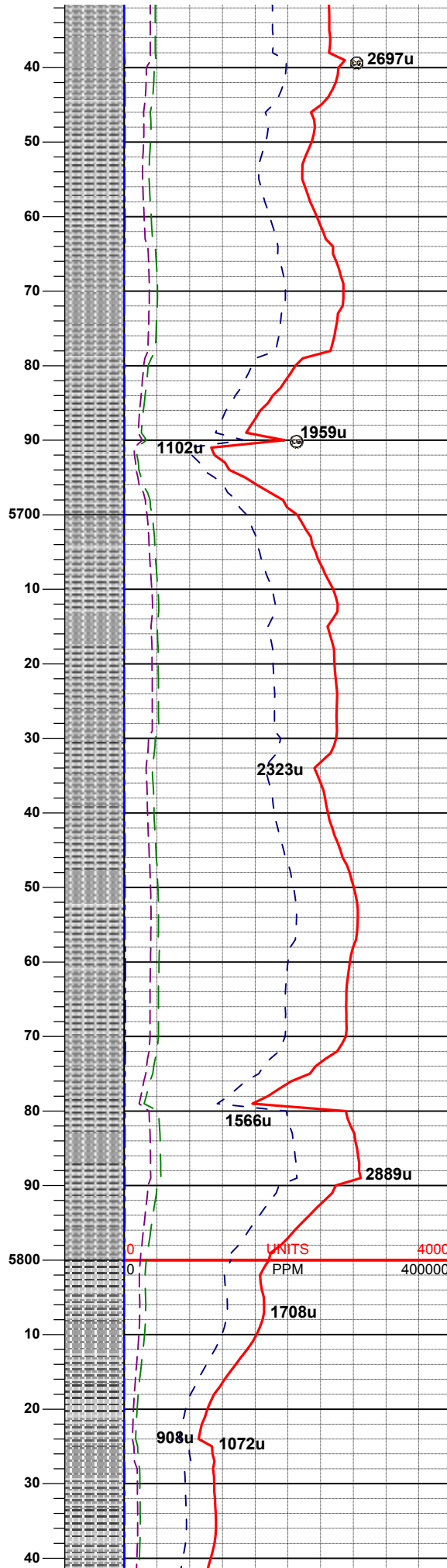
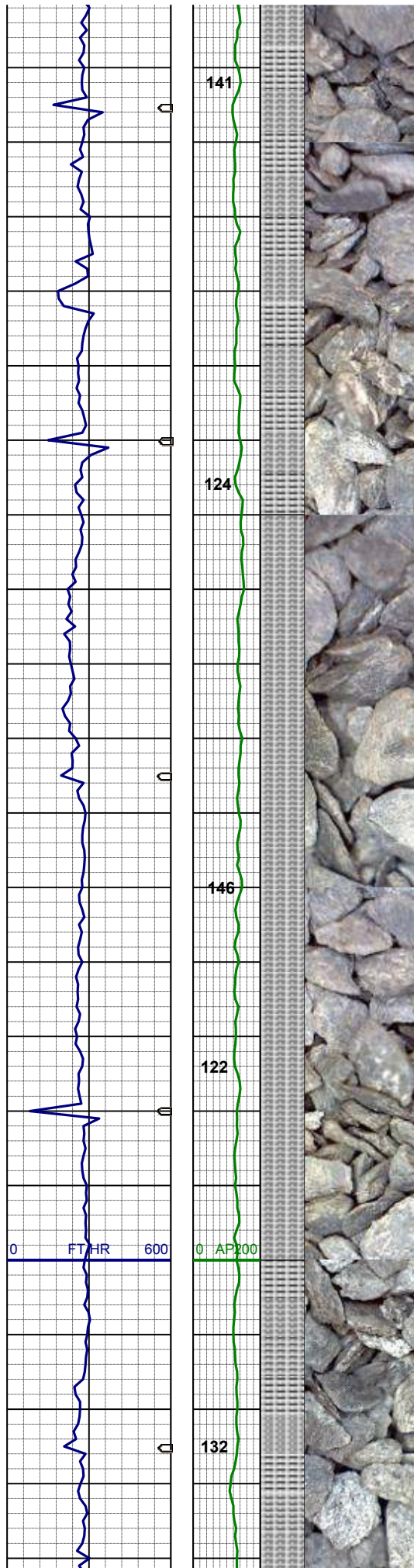
MD 5372'
INC 1.01°
AZI 142.45°
TVD 5357.8'

1775u

UNITS

PPM

1936u

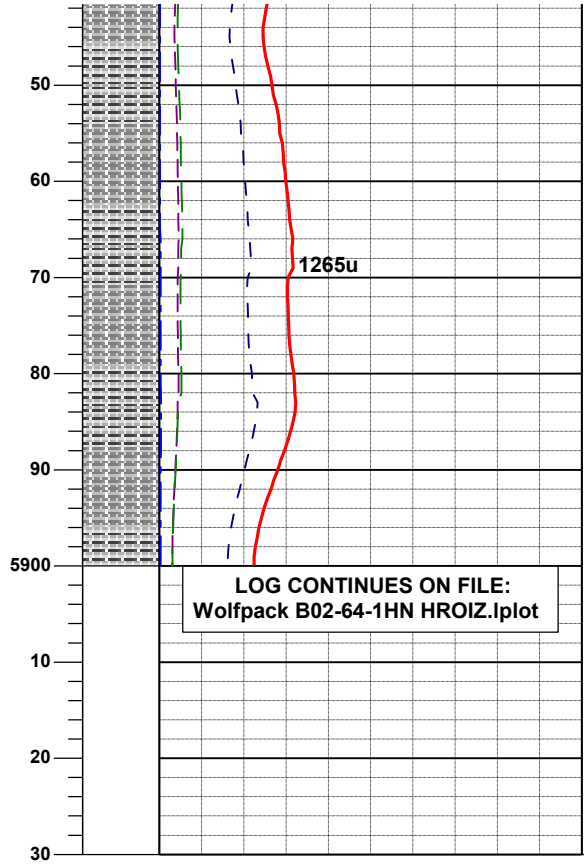
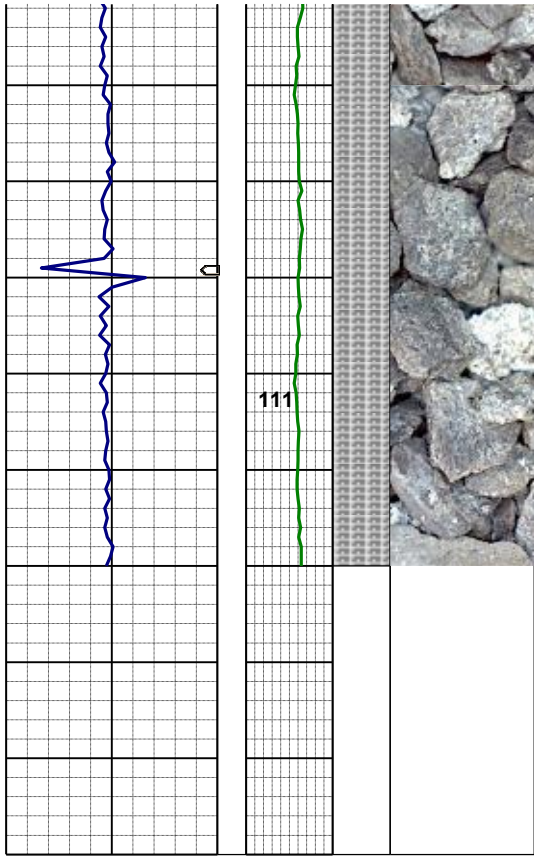


MD 5641'
INC 0.23°
AZI 349.31°
TVD 5626.8'

100% SLTYSH: ltgy- mgy, sft-mod
firm, sme fis, sbply-sbblky, shy-sity
tex, tr dism pyr

100% SLTYSH: ltgy- mgy, sft-mod
firm, sme fis, sbply-sbblky, shy-sity
tex

MD 5820'
INC 0.55°
AZI 94.93°
TVD 5805.8'



100% SLTYSH: ltgy- mgy, sft-mod
firm, sme fis, sbply-sbblky, shy-sity
tex

LOG CONTINUES ON FILE:
Wolfpack B02-64-1HN HROIZ.lplot

THANK YOU FOR CHOOSING
COLUMBINE LOGGING INC

WT 9.7 / VIS 38