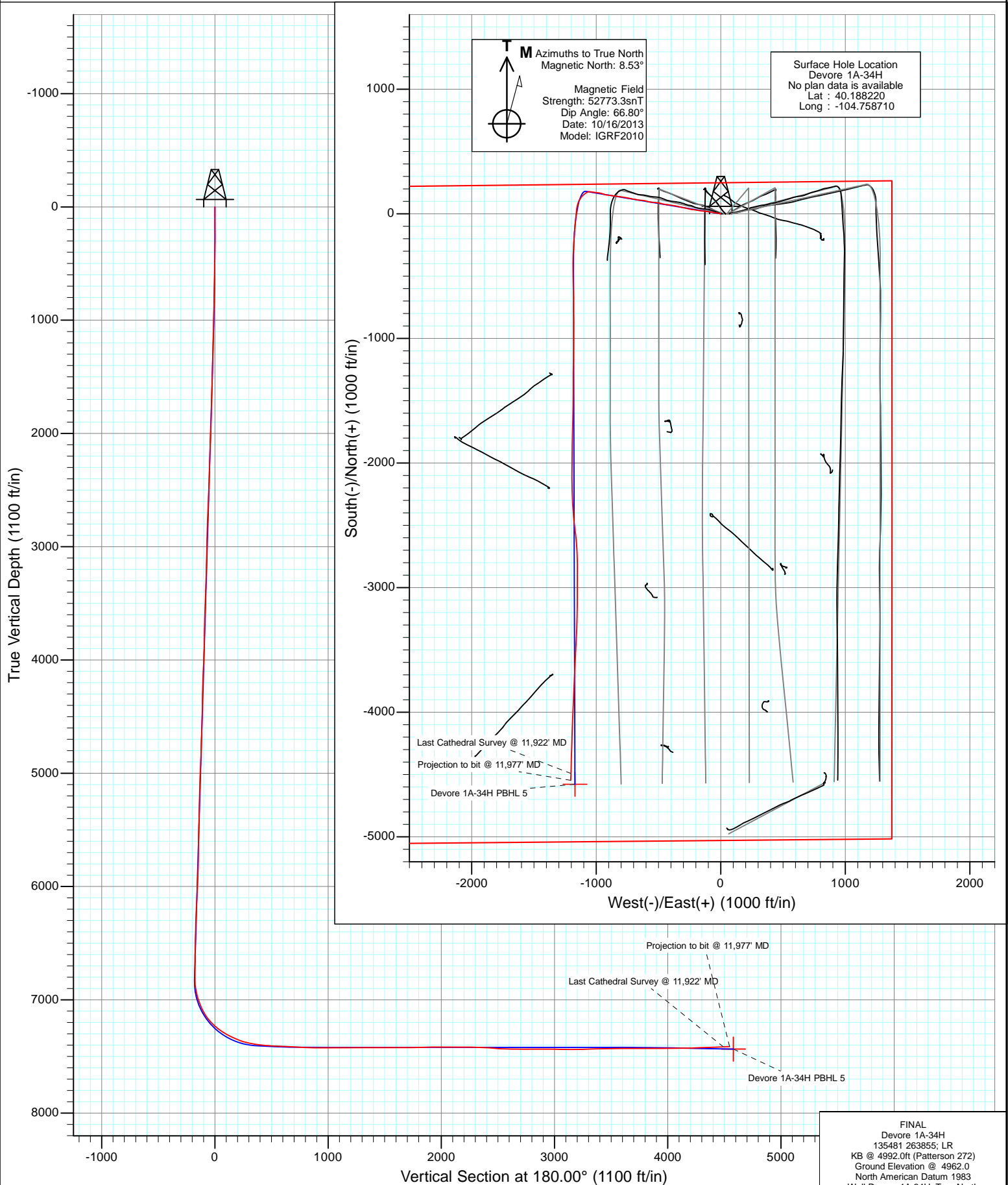


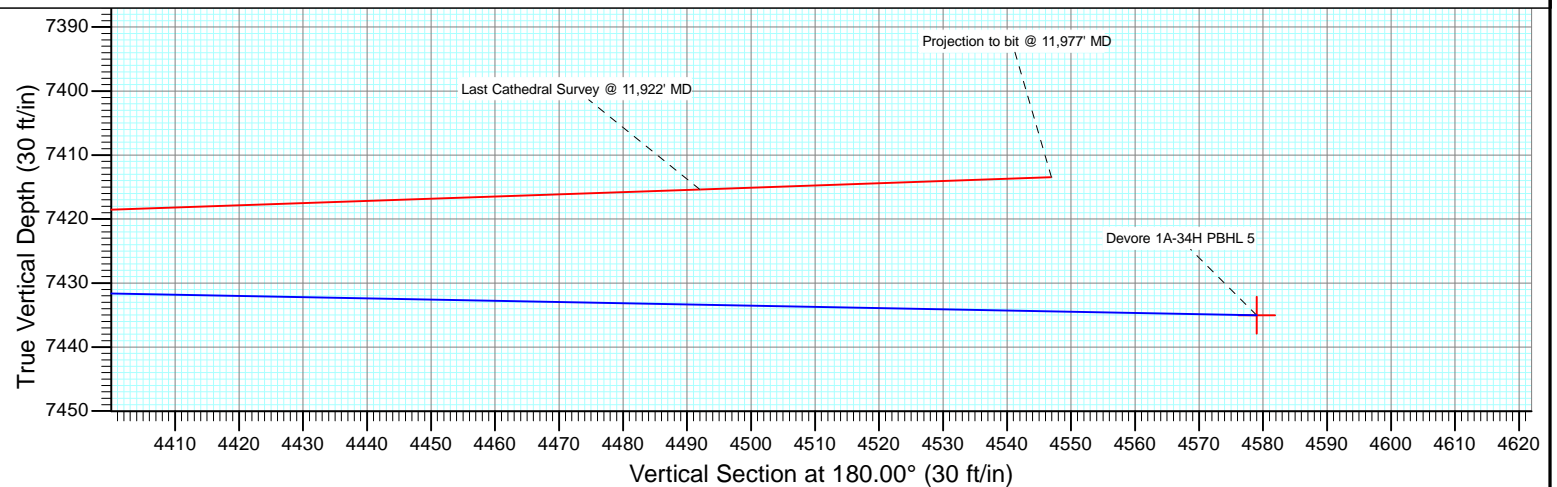
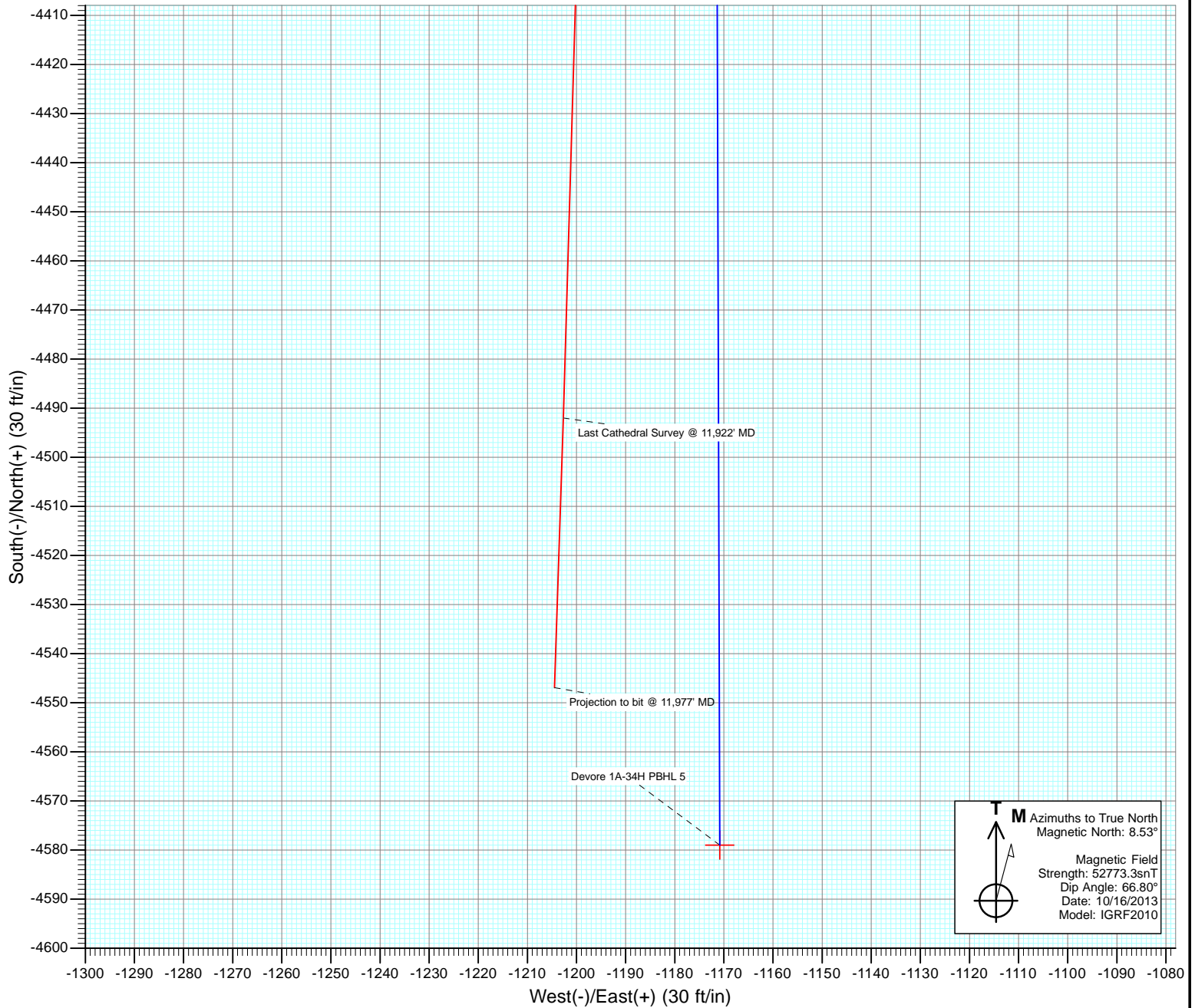


Project: DJ Wattenberg
Site: S34-T3N-R66W (Devore)
Well: Devore 1A-34H
Wellbore: Hz
Design: FINAL





Project: DJ Wattenberg
Site: S34-T3N-R66W (Devore)
Well: Devore 1A-34H
Wellbore: Hz
Design: FINAL



Cathedral Energy Services

Survey Report

Company:	EnCana Oil & Gas (USA) Inc	Local Co-ordinate Reference:	Well Devore 1A-34H
Project:	DJ Wattenberg	TVD Reference:	KB @ 4992.0ft (Patterson 272)
Site:	S34-T3N-R66W (Devore)	MD Reference:	KB @ 4992.0ft (Patterson 272)
Well:	Devore 1A-34H	North Reference:	True
Wellbore:	Hz	Survey Calculation Method:	Minimum Curvature
Design:	FINAL	Database:	USA EDM 5000 Multi Users DB

Project	DJ Wattenberg		
Map System:	US State Plane 1983	System Datum:	Mean Sea Level
Geo Datum:	North American Datum 1983		
Map Zone:	Colorado Northern Zone		

Site		S34-T3N-R66W (Devore)			
Site Position:		Northing:	1,307,711.17 ft	Latitude:	40.175660
From:	Lat/Long	Easting:	3,207,971.22 ft	Longitude:	-104.755750
Position Uncertainty:	0.0 ft	Slot Radius:	13.200 in	Grid Convergence:	0.48 °

Well	Devore 1A-34H					
Well Position	+N/-S	0.0 ft	Northing:	1,312,279.46 ft	Latitude:	40.188220
	+E/-W	0.0 ft	Easting:	3,207,105.88 ft	Longitude:	-104.758710
Position Uncertainty		0.0 ft	Wellhead Elevation:	ft	Ground Level:	4,962.0 ft

Wellbore	Hz				
Magnetics	Model Name	Sample Date	Declination (°)	Dip Angle (°)	Field Strength (nT)
	IGRF2010	10/16/2013	8.53	66.80	52,773

Design	FINAL				
Audit Notes:					
Version:	1.0	Phase:	ACTUAL	Tie On Depth:	0.0
Vertical Section:	Depth From (TVD)	+N/-S (ft)	+E/-W (ft)	Direction (°)	
	0.0	0.0	0.0	180.00	

Survey Program	Date	10/27/2013			
From (ft)	To (ft)	Survey (Wellbore)	Tool Name	Description	
166.0	11,977.0	Survey #1 (Hz)	Geolink MWD	Geolink MWD	

Survey										
Measured Depth (ft)	Inclination (°)	Azimuth (°)	Vertical Depth (ft)	+N/-S (ft)	+E/-W (ft)	Vertical Section (ft)	Dogleg Rate (°/100ft)	Build Rate (°/100ft)	Formations / Comments	
0.0	0.00	0.00	0.0	0.0	0.0	0.0	0.00	0.00		
166.0	0.40	178.90	166.0	-0.6	0.0	0.6	0.24	0.24		
260.0	0.40	87.70	260.0	-0.9	0.3	0.9	0.61	0.00		
353.0	1.10	302.80	353.0	-0.4	-0.1	0.4	1.55	0.75		
447.0	2.90	280.90	446.9	0.5	-3.2	-0.5	2.05	1.91		
541.0	4.30	285.30	540.7	1.9	-8.9	-1.9	1.52	1.49		
634.0	5.80	281.00	633.4	3.7	-16.9	-3.7	1.66	1.61		
728.0	5.90	278.60	726.9	5.4	-26.3	-5.4	0.28	0.11		
821.0	7.10	276.90	819.3	6.8	-36.8	-6.8	1.31	1.29		
915.0	8.80	280.50	912.4	8.8	-49.6	-8.8	1.88	1.81		
992.0	8.60	281.80	988.5	11.0	-61.0	-11.0	0.36	-0.26		
1,108.0	9.20	279.00	1,103.1	14.3	-78.7	-14.3	0.64	0.52		
1,201.0	8.40	277.50	1,195.0	16.3	-92.7	-16.3	0.89	-0.86		

Cathedral Energy Services

Survey Report

Company:	EnCana Oil & Gas (USA) Inc	Local Co-ordinate Reference:	Well Devore 1A-34H
Project:	DJ Wattenberg	TVD Reference:	KB @ 4992.0ft (Patterson 272)
Site:	S34-T3N-R66W (Devore)	MD Reference:	KB @ 4992.0ft (Patterson 272)
Well:	Devore 1A-34H	North Reference:	True
Wellbore:	Hz	Survey Calculation Method:	Minimum Curvature
Design:	FINAL	Database:	USA EDM 5000 Multi Users DB

Survey									
Measured Depth (ft)	Inclination (°)	Azimuth (°)	Vertical Depth (ft)	+N/-S (ft)	+E/-W (ft)	Vertical Section (ft)	Dogleg Rate (°/100ft)	Build Rate (°/100ft)	Formations / Comments
1,295.0	10.40	274.40	1,287.7	17.9	-108.0	-17.9	2.19	2.13	
1,388.0	11.90	280.10	1,379.0	20.2	-125.8	-20.2	2.00	1.61	
1,482.0	11.40	277.90	1,471.1	23.2	-144.6	-23.2	0.71	-0.53	
1,576.0	11.10	275.00	1,563.2	25.2	-162.8	-25.2	0.68	-0.32	
1,669.0	10.90	274.00	1,654.5	26.6	-180.5	-26.6	0.30	-0.22	
1,763.0	10.80	281.80	1,746.9	29.0	-198.0	-29.0	1.56	-0.11	
1,856.0	9.80	279.90	1,838.4	32.2	-214.3	-32.2	1.14	-1.08	
1,950.0	9.70	277.10	1,931.0	34.5	-230.0	-34.5	0.52	-0.11	
2,044.0	9.70	286.20	2,023.7	37.7	-245.5	-37.7	1.63	0.00	
2,139.0	9.10	283.60	2,117.4	41.7	-260.5	-41.7	0.77	-0.63	
2,233.0	8.60	281.10	2,210.3	44.8	-274.6	-44.8	0.67	-0.53	
2,328.0	9.70	281.70	2,304.1	47.8	-289.4	-47.8	1.16	1.16	
2,422.0	9.00	278.80	2,396.8	50.5	-304.4	-50.5	0.90	-0.74	
2,516.0	9.30	285.30	2,489.6	53.7	-319.0	-53.7	1.14	0.32	
2,611.0	10.20	279.80	2,583.2	57.1	-334.7	-57.1	1.36	0.95	
2,705.0	11.60	284.20	2,675.6	60.9	-352.1	-60.9	1.73	1.49	
2,800.0	10.10	282.70	2,768.8	65.0	-369.5	-65.0	1.61	-1.58	
2,894.0	10.90	278.30	2,861.3	68.1	-386.3	-68.1	1.20	0.85	
2,989.0	10.20	276.30	2,954.7	70.4	-403.6	-70.4	0.83	-0.74	
3,083.0	9.20	271.90	3,047.3	71.5	-419.3	-71.5	1.32	-1.06	
3,178.0	10.10	283.60	3,141.0	73.7	-435.0	-73.7	2.27	0.95	
3,272.0	8.30	275.50	3,233.8	76.3	-449.8	-76.3	2.35	-1.91	
3,366.0	9.30	283.50	3,326.7	78.7	-463.9	-78.7	1.68	1.06	
3,461.0	9.10	287.60	3,420.5	82.8	-478.6	-82.8	0.72	-0.21	
3,556.0	10.00	277.20	3,514.1	86.1	-493.9	-86.1	2.04	0.95	
3,650.0	10.60	277.80	3,606.6	88.3	-510.6	-88.3	0.65	0.64	
3,744.0	12.10	278.90	3,698.8	91.0	-528.9	-91.0	1.61	1.60	
3,839.0	10.70	272.40	3,791.9	92.9	-547.5	-92.9	2.00	-1.47	
3,933.0	9.70	279.40	3,884.4	94.6	-564.0	-94.6	1.69	-1.06	
4,028.0	9.80	281.40	3,978.1	97.5	-579.9	-97.5	0.37	0.11	
4,122.0	11.40	283.30	4,070.5	101.2	-596.8	-101.2	1.74	1.70	
4,217.0	11.20	282.30	4,163.6	105.3	-614.9	-105.3	0.29	-0.21	
4,311.0	10.10	277.60	4,256.0	108.4	-632.0	-108.4	1.49	-1.17	
4,406.0	8.90	271.20	4,349.7	109.6	-647.6	-109.6	1.68	-1.26	
4,500.0	8.20	278.50	4,442.7	110.8	-661.5	-110.8	1.37	-0.74	
4,595.0	9.30	281.20	4,536.5	113.2	-675.7	-113.2	1.24	1.16	
4,689.0	10.20	281.10	4,629.2	116.3	-691.3	-116.3	0.96	0.96	
4,784.0	11.30	279.80	4,722.5	119.5	-708.8	-119.5	1.19	1.16	
4,878.0	10.40	277.50	4,814.8	122.2	-726.3	-122.2	1.06	-0.96	
4,972.0	10.50	285.50	4,907.3	125.6	-742.9	-125.6	1.55	0.11	
5,067.0	8.90	284.20	5,000.9	129.7	-758.4	-129.7	1.70	-1.68	
5,161.0	10.80	279.50	5,093.5	133.0	-774.1	-133.0	2.19	2.02	
5,256.0	9.90	276.10	5,187.0	135.3	-791.0	-135.3	1.14	-0.95	
5,350.0	10.60	277.80	5,279.5	137.3	-807.6	-137.3	0.81	0.74	
5,444.0	8.40	275.50	5,372.2	139.2	-823.0	-139.2	2.37	-2.34	
5,539.0	9.70	280.40	5,466.0	141.3	-837.8	-141.3	1.59	1.37	
5,633.0	10.40	276.40	5,558.6	143.6	-854.0	-143.6	1.05	0.74	
5,728.0	9.80	272.00	5,652.1	144.9	-870.6	-144.9	1.03	-0.63	
5,822.0	9.70	280.30	5,744.7	146.6	-886.4	-146.6	1.50	-0.11	
5,917.0	9.30	279.10	5,838.4	149.2	-901.9	-149.2	0.47	-0.42	
6,011.0	9.20	274.70	5,931.2	151.0	-916.9	-151.0	0.76	-0.11	
6,105.0	9.00	294.40	6,024.1	154.7	-931.1	-154.7	3.31	-0.21	
6,200.0	10.90	286.70	6,117.6	160.3	-946.4	-160.3	2.44	2.00	

Cathedral Energy Services

Survey Report

Company:	EnCana Oil & Gas (USA) Inc	Local Co-ordinate Reference:	Well Devore 1A-34H
Project:	DJ Wattenberg	TVD Reference:	KB @ 4992.0ft (Patterson 272)
Site:	S34-T3N-R66W (Devore)	MD Reference:	KB @ 4992.0ft (Patterson 272)
Well:	Devore 1A-34H	North Reference:	True
Wellbore:	Hz	Survey Calculation Method:	Minimum Curvature
Design:	FINAL	Database:	USA EDM 5000 Multi Users DB

Survey

Measured Depth (ft)	Inclination (°)	Azimuth (°)	Vertical Depth (ft)	+N/-S (ft)	+E/-W (ft)	Vertical Section (ft)	Dogleg Rate (°/100ft)	Build Rate (°/100ft)	Formations / Comments
6,295.0	11.60	282.60	6,210.8	165.0	-964.4	-165.0	1.12	0.74	
6,389.0	8.80	277.80	6,303.3	168.0	-980.7	-168.0	3.11	-2.98	
6,484.0	9.60	276.10	6,397.1	169.9	-995.8	-169.9	0.89	0.84	
6,578.0	9.20	283.40	6,489.8	172.4	-1,010.9	-172.4	1.34	-0.43	
6,672.0	9.60	275.90	6,582.6	175.0	-1,026.0	-175.0	1.37	0.43	
6,767.0	10.90	271.90	6,676.1	176.1	-1,042.8	-176.1	1.56	1.37	
6,861.0	8.90	269.20	6,768.6	176.3	-1,059.0	-176.3	2.18	-2.13	
6,893.0	8.20	270.30	6,800.3	176.3	-1,063.8	-176.3	2.25	-2.19	
6,924.0	7.20	260.30	6,831.0	176.0	-1,067.9	-176.0	5.38	-3.23	
6,956.0	9.90	243.10	6,862.7	174.4	-1,072.3	-174.4	11.53	8.44	
6,987.0	14.10	235.70	6,893.0	171.0	-1,077.8	-171.0	14.40	13.55	
7,018.0	18.70	232.10	6,922.7	165.9	-1,084.9	-165.9	15.19	14.84	
7,050.0	21.90	230.80	6,952.7	158.9	-1,093.5	-158.9	10.10	10.00	
7,081.0	23.00	227.50	6,981.4	151.2	-1,102.5	-151.2	5.39	3.55	
7,113.0	24.00	223.80	7,010.7	142.3	-1,111.6	-142.3	5.57	3.12	
7,144.0	26.10	217.40	7,038.8	132.3	-1,120.1	-132.3	11.05	6.77	
7,176.0	28.70	212.70	7,067.2	120.2	-1,128.5	-120.2	10.56	8.12	
7,207.0	30.10	206.70	7,094.2	107.0	-1,136.0	-107.0	10.51	4.52	
7,239.0	32.70	203.40	7,121.5	91.9	-1,143.1	-91.9	9.74	8.12	
7,270.0	35.90	196.80	7,147.2	75.5	-1,149.0	-75.5	15.81	10.32	
7,301.0	39.00	191.10	7,171.8	57.2	-1,153.6	-57.2	14.99	10.00	
7,333.0	42.70	187.80	7,196.0	36.6	-1,157.0	-36.6	13.38	11.56	
7,364.0	46.70	186.10	7,218.0	15.0	-1,159.6	-15.0	13.47	12.90	
7,396.0	50.30	185.10	7,239.2	-8.9	-1,161.9	8.9	11.49	11.25	
7,427.0	53.10	185.50	7,258.4	-33.1	-1,164.2	33.1	9.09	9.03	
7,459.0	55.80	185.20	7,277.0	-59.0	-1,166.6	59.0	8.47	8.44	
7,490.0	58.60	185.40	7,293.8	-85.0	-1,169.0	85.0	9.05	9.03	
7,522.0	61.60	184.90	7,309.8	-112.6	-1,171.5	112.6	9.47	9.37	
7,553.0	64.40	184.70	7,323.8	-140.1	-1,173.8	140.1	9.05	9.03	
7,585.0	65.30	183.50	7,337.4	-169.0	-1,175.9	169.0	4.41	2.81	
7,616.0	67.40	183.50	7,349.9	-197.4	-1,177.6	197.4	6.77	6.77	
7,648.0	70.90	183.20	7,361.3	-227.2	-1,179.4	227.2	10.97	10.94	
7,679.0	74.00	183.20	7,370.6	-256.7	-1,181.0	256.7	10.00	10.00	
7,711.0	75.90	182.90	7,378.9	-287.6	-1,182.6	287.6	6.01	5.94	
7,742.0	79.70	182.50	7,385.5	-317.8	-1,184.1	317.8	12.32	12.26	
7,774.0	81.20	182.10	7,390.8	-349.4	-1,185.3	349.4	4.85	4.69	
7,805.0	81.80	181.90	7,395.4	-380.0	-1,186.4	380.0	2.04	1.94	
7,839.0	83.10	180.10	7,399.8	-413.7	-1,187.0	413.7	6.49	3.82	
7,930.0	88.00	178.50	7,406.9	-504.4	-1,185.9	504.4	5.66	5.38	
8,024.0	87.10	178.50	7,410.9	-598.3	-1,183.4	598.3	0.96	-0.96	
8,119.0	87.30	179.60	7,415.5	-693.1	-1,181.9	693.1	1.18	0.21	
8,213.0	86.90	179.40	7,420.3	-787.0	-1,181.0	787.0	0.48	-0.43	
8,308.0	89.10	179.90	7,423.6	-882.0	-1,180.5	882.0	2.37	2.32	
8,402.0	89.90	179.90	7,424.4	-975.9	-1,180.3	975.9	0.85	0.85	
8,497.0	91.00	181.20	7,423.7	-1,070.9	-1,181.2	1,070.9	1.79	1.16	
8,591.0	90.40	181.20	7,422.5	-1,164.9	-1,183.2	1,164.9	0.64	-0.64	
8,685.0	89.40	179.40	7,422.7	-1,258.9	-1,183.7	1,258.9	2.19	-1.06	
8,780.0	90.50	180.20	7,422.8	-1,353.9	-1,183.3	1,353.9	1.43	1.16	
8,874.0	90.50	180.70	7,422.0	-1,447.9	-1,184.1	1,447.9	0.53	0.00	
8,969.0	90.20	181.10	7,421.4	-1,542.9	-1,185.6	1,542.9	0.53	-0.32	
9,064.0	89.60	180.70	7,421.5	-1,637.9	-1,187.1	1,637.9	0.76	-0.63	
9,158.0	90.70	181.30	7,421.3	-1,731.8	-1,188.7	1,731.8	1.33	1.17	
9,252.0	91.30	181.80	7,419.7	-1,825.8	-1,191.2	1,825.8	0.83	0.64	

Cathedral Energy Services

Survey Report

Company:	EnCana Oil & Gas (USA) Inc	Local Co-ordinate Reference:	Well Devore 1A-34H
Project:	DJ Wattenberg	TVD Reference:	KB @ 4992.0ft (Patterson 272)
Site:	S34-T3N-R66W (Devore)	MD Reference:	KB @ 4992.0ft (Patterson 272)
Well:	Devore 1A-34H	North Reference:	True
Wellbore:	Hz	Survey Calculation Method:	Minimum Curvature
Design:	FINAL	Database:	USA EDM 5000 Multi Users DB

Survey

Measured Depth (ft)	Inclination (°)	Azimuth (°)	Vertical Depth (ft)	+N/-S (ft)	+E/-W (ft)	Vertical Section (ft)	Dogleg Rate (°/100ft)	Build Rate (°/100ft)	Formations / Comments
9,347.0	91.00	181.10	7,417.8	-1,920.7	-1,193.6	1,920.7	0.80	-0.32	
9,441.0	89.90	180.20	7,417.0	-2,014.7	-1,194.7	2,014.7	1.51	-1.17	
9,535.0	89.60	179.30	7,417.4	-2,108.7	-1,194.3	2,108.7	1.01	-0.32	
9,630.0	89.60	178.80	7,418.1	-2,203.7	-1,192.7	2,203.7	0.53	0.00	
9,724.0	89.50	178.80	7,418.8	-2,297.7	-1,190.8	2,297.7	0.11	-0.11	
9,819.0	86.50	175.30	7,422.1	-2,392.5	-1,185.9	2,392.5	4.85	-3.16	
9,881.0	85.50	173.50	7,426.5	-2,454.0	-1,179.8	2,454.0	3.31	-1.61	
9,913.0	85.20	173.30	7,429.1	-2,485.7	-1,176.2	2,485.7	1.13	-0.94	
9,944.0	86.30	173.30	7,431.4	-2,516.4	-1,172.6	2,516.4	3.55	3.55	
9,976.0	87.50	172.40	7,433.1	-2,548.1	-1,168.6	2,548.1	4.69	3.75	
10,007.0	88.30	173.60	7,434.2	-2,578.9	-1,164.8	2,578.9	4.65	2.58	
10,039.0	88.70	174.50	7,435.1	-2,610.7	-1,161.5	2,610.7	3.08	1.25	
10,070.0	89.50	174.90	7,435.6	-2,641.6	-1,158.6	2,641.6	2.89	2.58	
10,102.0	90.50	175.60	7,435.6	-2,673.4	-1,156.0	2,673.4	3.81	3.12	
10,165.0	90.50	178.70	7,435.0	-2,736.4	-1,152.9	2,736.4	4.92	0.00	
10,228.0	89.90	179.90	7,434.8	-2,799.4	-1,152.1	2,799.4	2.13	-0.95	
10,291.0	89.30	179.80	7,435.2	-2,862.3	-1,151.9	2,862.3	0.97	-0.95	
10,354.0	89.90	180.30	7,435.7	-2,925.3	-1,152.0	2,925.3	1.24	0.95	
10,416.0	89.40	179.60	7,436.0	-2,987.3	-1,151.9	2,987.3	1.39	-0.81	
10,479.0	88.90	179.80	7,437.0	-3,050.3	-1,151.6	3,050.3	0.85	-0.79	
10,574.0	89.50	180.80	7,438.3	-3,145.3	-1,152.1	3,145.3	1.23	0.63	
10,669.0	92.00	181.20	7,437.1	-3,240.3	-1,153.7	3,240.3	2.67	2.63	
10,763.0	91.10	182.00	7,434.5	-3,334.2	-1,156.4	3,334.2	1.28	-0.96	
10,858.0	91.90	182.60	7,432.0	-3,429.1	-1,160.2	3,429.1	1.05	0.84	
10,952.0	90.70	183.30	7,429.9	-3,523.0	-1,165.0	3,523.0	1.48	-1.28	
11,047.0	89.90	182.60	7,429.4	-3,617.8	-1,169.9	3,617.8	1.12	-0.84	
11,141.0	90.00	182.50	7,429.5	-3,711.7	-1,174.1	3,711.7	0.15	0.11	
11,235.0	89.90	182.40	7,429.6	-3,805.7	-1,178.1	3,805.7	0.15	-0.11	
11,330.0	90.40	182.70	7,429.3	-3,900.6	-1,182.3	3,900.6	0.61	0.53	
11,424.0	90.30	182.10	7,428.7	-3,994.5	-1,186.3	3,994.5	0.65	-0.11	
11,519.0	91.00	182.50	7,427.7	-4,089.4	-1,190.1	4,089.4	0.85	0.74	
11,562.0	91.20	182.40	7,426.8	-4,132.3	-1,191.9	4,132.3	0.52	0.47	
11,613.0	91.30	181.80	7,425.7	-4,183.3	-1,193.8	4,183.3	1.19	0.20	
11,651.0	91.50	181.40	7,424.8	-4,221.3	-1,194.8	4,221.3	1.18	0.53	
11,707.0	92.30	181.80	7,422.9	-4,277.2	-1,196.4	4,277.2	1.60	1.43	
11,802.0	91.90	181.60	7,419.5	-4,372.1	-1,199.2	4,372.1	0.47	-0.42	
11,922.0	92.00	181.70	7,415.4	-4,492.0	-1,202.7	4,492.0	0.12	0.08	Last Cathedral Survey @ 11,922' MD
11,977.0	92.00	182.00	7,413.5	-4,546.9	-1,204.5	4,546.9	0.55	0.00	Projection to bit @ 11,977' MD

Cathedral Energy Services

Survey Report

Company:	EnCana Oil & Gas (USA) Inc	Local Co-ordinate Reference:	Well Devore 1A-34H
Project:	DJ Wattenberg	TVD Reference:	KB @ 4992.0ft (Patterson 272)
Site:	S34-T3N-R66W (Devore)	MD Reference:	KB @ 4992.0ft (Patterson 272)
Well:	Devore 1A-34H	North Reference:	True
Wellbore:	Hz	Survey Calculation Method:	Minimum Curvature
Design:	FINAL	Database:	USA EDM 5000 Multi Users DB

Targets									
Target Name	Dip Angle	Dip Dir.	TVD	+N/-S	+E/-W	Northing	Easting	Latitude	Longitude
- hit/miss target	(°)	(°)	(ft)	(ft)	(ft)	(ft)	(ft)		
- Shape									
Devore 1A-34H TGT 1	0.00	0.00	7,420.0	-750.0	-1,182.1	1,311,519.56	3,205,930.14	40.186161	-104.762941
- actual wellpath misses target center by 1.8ft at 8176.0ft MD (7418.3 TVD, -750.1 N, -1181.4 E)									
- Point									
Devore 1A-34H PBHL	0.00	0.00	7,406.0	-4,579.0	-1,170.8	1,307,690.84	3,205,973.38	40.175650	-104.762900
- actual wellpath misses target center by 47.1ft at 11977.0ft MD (7413.5 TVD, -4546.9 N, -1204.5 E)									
- Point									
Devore 1A-34H PBHL 2	0.00	0.00	7,406.0	-4,579.0	-1,170.8	1,307,690.84	3,205,973.38	40.175650	-104.762900
- actual wellpath misses target center by 47.1ft at 11977.0ft MD (7413.5 TVD, -4546.9 N, -1204.5 E)									
- Point									
Devore 1A-34H TGT 2	0.00	0.00	7,420.0	-3,750.0	-1,173.3	1,308,519.76	3,205,964.02	40.177926	-104.762909
- actual wellpath misses target center by 9.8ft at 11179.2ft MD (7429.5 TVD, -3749.9 N, -1175.7 E)									
- Point									
Devore 1A-34H PBHL 5	0.00	0.00	7,435.0	-4,579.0	-1,170.8	1,307,690.84	3,205,973.38	40.175650	-104.762900
- actual wellpath misses target center by 51.2ft at 11977.0ft MD (7413.5 TVD, -4546.9 N, -1204.5 E)									
- Point									
Devore 1A-34H LP	0.00	0.00	7,405.0	-365.3	-1,182.1	1,311,904.26	3,205,926.92	40.187217	-104.762941
- actual wellpath misses target center by 12.3ft at 7791.8ft MD (7393.4 TVD, -366.9 N, -1186.0 E)									
- Point									

Design Annotations				
Measured Depth	Vertical Depth	Local Coordinates		Comment
(ft)	(ft)	+N/-S (ft)	+E/-W (ft)	
11,922.0	7,415.4	-4,492.0	-1,202.7	Last Cathedral Survey @ 11,922' MD
11,977.0	7,413.5	-4,546.9	-1,204.5	Projection to bit @ 11,977' MD

Checked By: _____ Approved By: _____ Date: _____