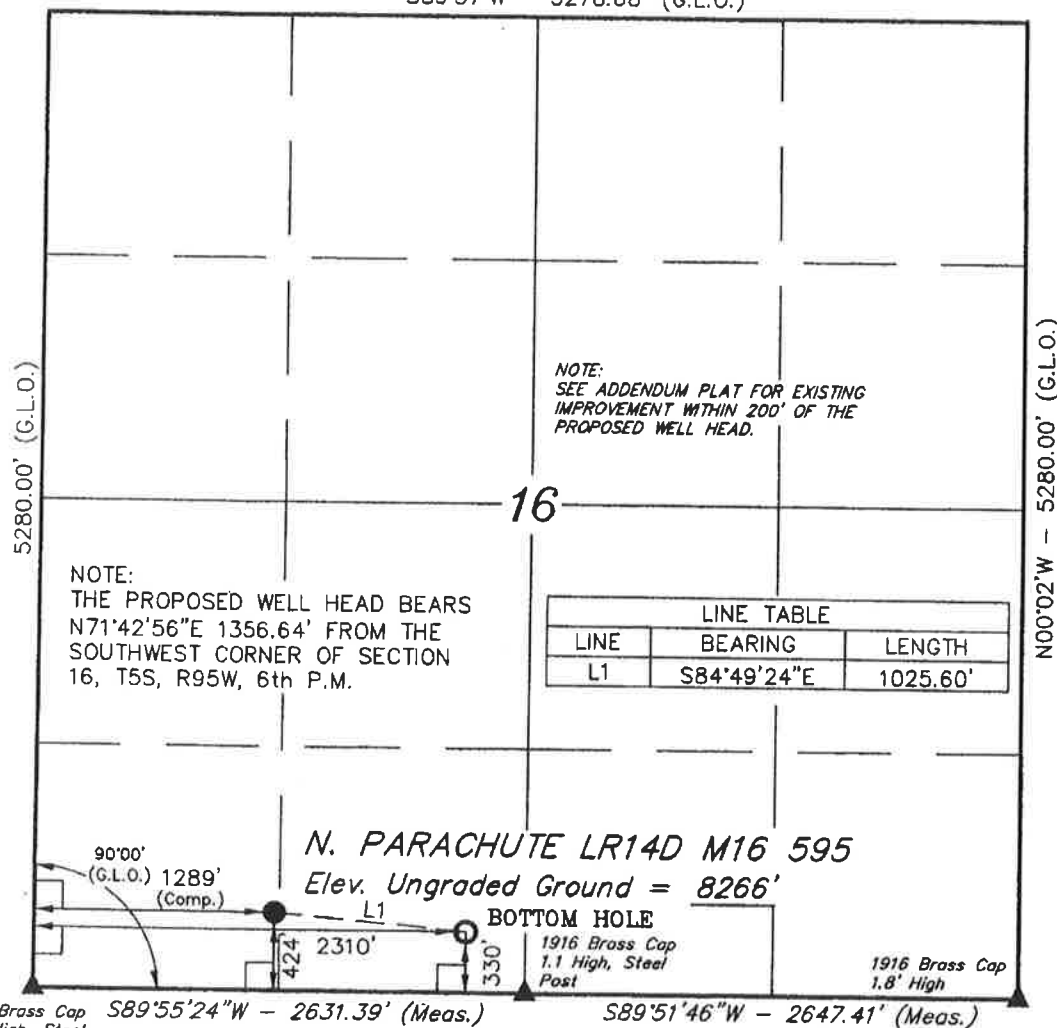


T5S, R95W, 6th P.M.

S89°57'W - 5278.68' (G.L.O.)



1916 Brass Cap 0.3' High, Steel Post

# LEGEND:

└ = 90° SYMBOL

● = PROPOSED WELL HEAD.

▲ = SECTION CORNERS LOCATED.

(NAD 83)  
LATITUDE = 39°36'27.84" (39.607733)  
LONGITUDE = 108°03'50.84" (108.064122)  
(NAD 27)  
LATITUDE = 39°36'27.92" (39.607756)  
LONGITUDE = 108°03'48.56" (108.063489)

PDOP = 1.2

## BERRY PETROLEUM COMPANY

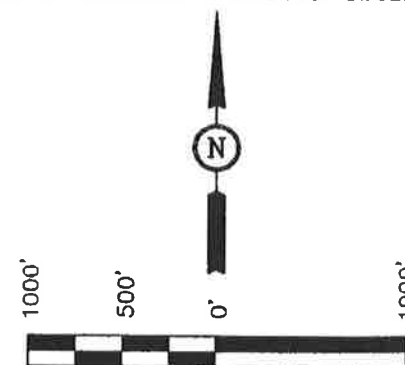
Well location, N. PARACHUTE LR14D M16 595,  
located as shown in the SW 1/4 SW 1/4 of  
Section 16, T5S, R95W, 6th P.M., Garfield  
County, Colorado.

## BASIS OF ELEVATION

SPOT ELEVATION AT THE NORTHWEST CORNER OF SECTION  
30, T5S, R95W, 6th P.M. TAKEN FROM THE FORKED GULCH  
QUADRANGLE, COLORADO, GARFIELD COUNTY, 7.5 MINUTE  
SERIES (TOPOGRAPHICAL MAP) PUBLISHED BY THE UNITED  
STATES DEPARTMENT OF THE INTERIOR, GEOLOGICAL SURVEY.  
SAID ELEVATION IS MARKED AS BEING 5966 FEET.

## BASIS OF BEARINGS

BASIS OF BEARINGS IS A G.P.S. OBSERVATION.



SCALE

CERTIFICATE

THIS IS TO CERTIFY THAT THE ABOVE PLAT WAS PREPARED FROM  
FIELD NOTES OF ACTUAL SURVEYS MADE BY ME OR UNDER MY  
SUPERVISION AND THAT THE SAME ARE TRUE AND CORRECT TO THE  
BEST OF MY KNOWLEDGE AND BELIEF.

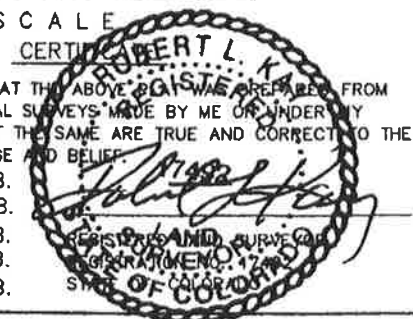
Revised: 09-01-06 D.R.B.

Revised: 06-27-06 D.R.B.

Revised: 08-31-05 D.R.B.

Revised: 08-19-05 D.R.B.

Revised: 08-18-05 D.R.B.



UINTAH ENGINEERING & LAND SURVEYING  
85 SOUTH 200 EAST - VERNAL, UTAH 84078  
(435) 789-1017

SCALE 1" = 1000'	DATE SURVEYED: 06-22-05	DATE DRAWN: 08-12-05
PARTY G.O. B.H. D.R.B.	REFERENCES G.L.O. PLAT	
WEATHER WARM	FILE BERRY PETROLEUM COMPANY	