

**5D Plan Report**

Anadarko Petroleum

Field Name: *WATTENBURG_NAD83*
Site Name: *BROTEMARKLE 4C-13HZ PAD*
Well Name: *BROTEMARKLE 4C-13H*
Plan: *PLAN 1*





Plan Data for BROTEMARKLE 4C-13H

Field: WATTENBURG_NAD83

Map Unit: USFT Vertical Reference Datum (VRD): Mean Sea Level
Projected Coordinate System: NAD83 / Colorado North (ftUS)

Site: BROTEMARKLE 4C-13HZ PAD

Unit: USFeet TVD Reference:
Company Name: Anadarko Petroleum
Position: Northing: 1323477.82USft Latitude: 40.218780°
Easting: 3215084.96USft Longitude: -104.729780°
North Reference: True Grid Convergence: 0.50°
Elevation Above VRD: 5024.00USft

Slot: BROTEMARKLE 4C-13H

Position:
Offset is from Site centre
+N/-S: 0.00USft Northing: 1323477.82USft Latitude: 40.218780°
+E/-W: -0.00USft Easting: 3215084.96USft Longitude: -104.729780°
Elevation Above VRD: 5024.00USft

Well: BROTEMARKLE 4C-13H

Type: Main-Well
File Number:
Vertical Section: Position offset of origin from Slot centre:
+N/-S: -0.00USft Azimuth: 359.83°
+E/-W: 0.00USft
Magnetic Parameters:
Model: Field Strength: Declination: Dip: Date:
BGGM 52749(nT) 8.54° 66.82° 2013-11-17

Plan Point Information:

DogLeg Severity Unit: °/100.00ft										Position offsets from Slot centre		
MD	Inc	Az	TVD	+N/-S	+E/-W	VSec	DLS	Toolface	Build	Turn		
(USft)	(°)	(°)	(USft)	(USft)	(USft)	(USft)	(DLSU)	(°)	(DLSU)	(DLSU)		
0.00	0.00	0.00	0.00	0.00	0.00	0.00	0.00	0.0	0.0	0.00		
1400.00	0.00	0.00	1400.00	0.00	0.00	0.00	0.00	0.0	0.0	0.00		
2199.91	16.00	258.70	2189.55	-21.74	-108.80	-21.42	2.00	258.7	2.00	0.00		
5912.59	16.00	258.70	5758.45	-222.26	-1112.20	-218.96	0.00	0.0	0.00	0.00		
6712.50	0.00	0.00	6548.00	-244.00	-1221.00	-240.38	2.00	180.0	-2.00	0.00		
7049.54	0.00	0.00	6885.04	-244.00	-1221.00	-240.38	0.00	0.0	0.00	0.00		
7948.43	89.89	359.83	7458.00	327.85	-1222.72	331.48	10.00	359.8	10.00	0.00		
12107.53	89.89	359.83	7466.00	4486.92	-1235.20	4490.57	0.00	0.0	0.00	0.00		

Formation Point Information:

Name	TVD Elevation	MD
(USft)	(USft)	(USft)
FOX HILLS MARKER	1230.00	3811.00
PARKMAN	4059.00	982.00
SUSSEX	4443.00	598.00
SHARON SPRINGS	7114.00	-2073.00
NIOBRARA A	7170.00	-2129.00
NIOBRARA B	7222.00	-2181.00

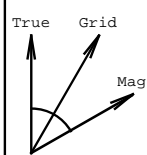
LINER: 6949.54' MD
KOP: 7049.54' MD

Target Set Information:

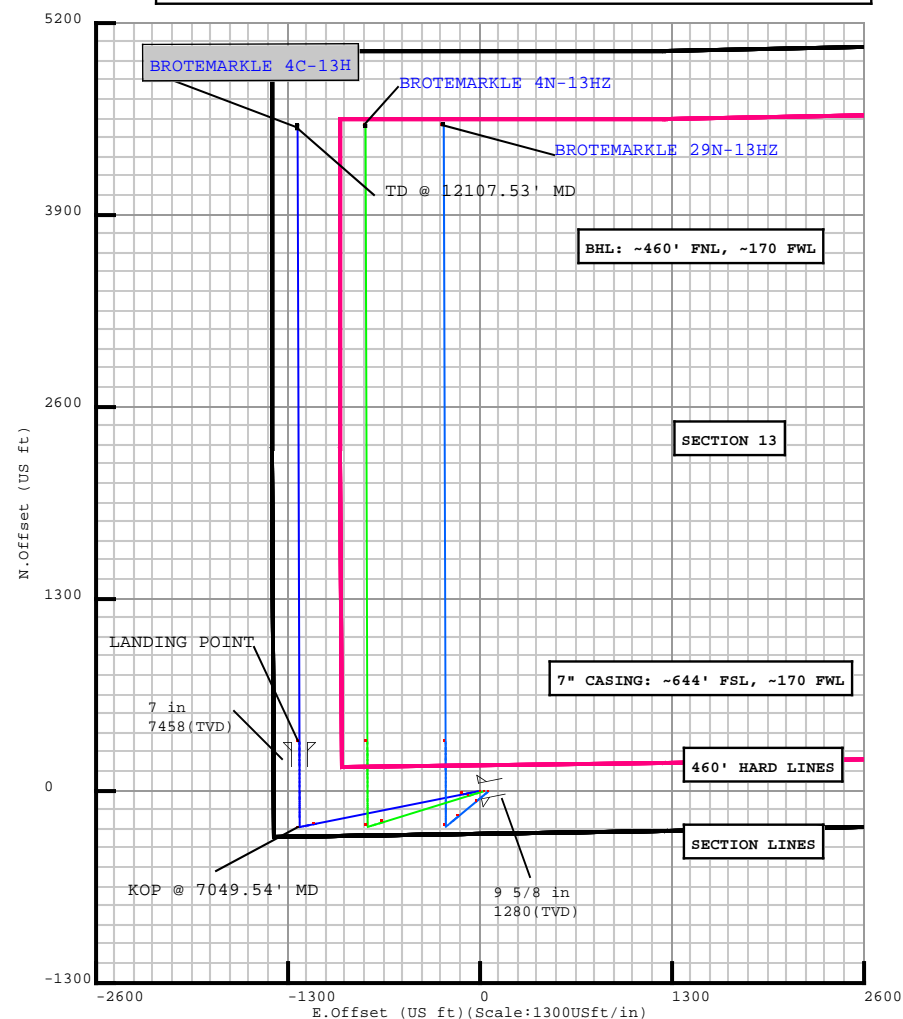
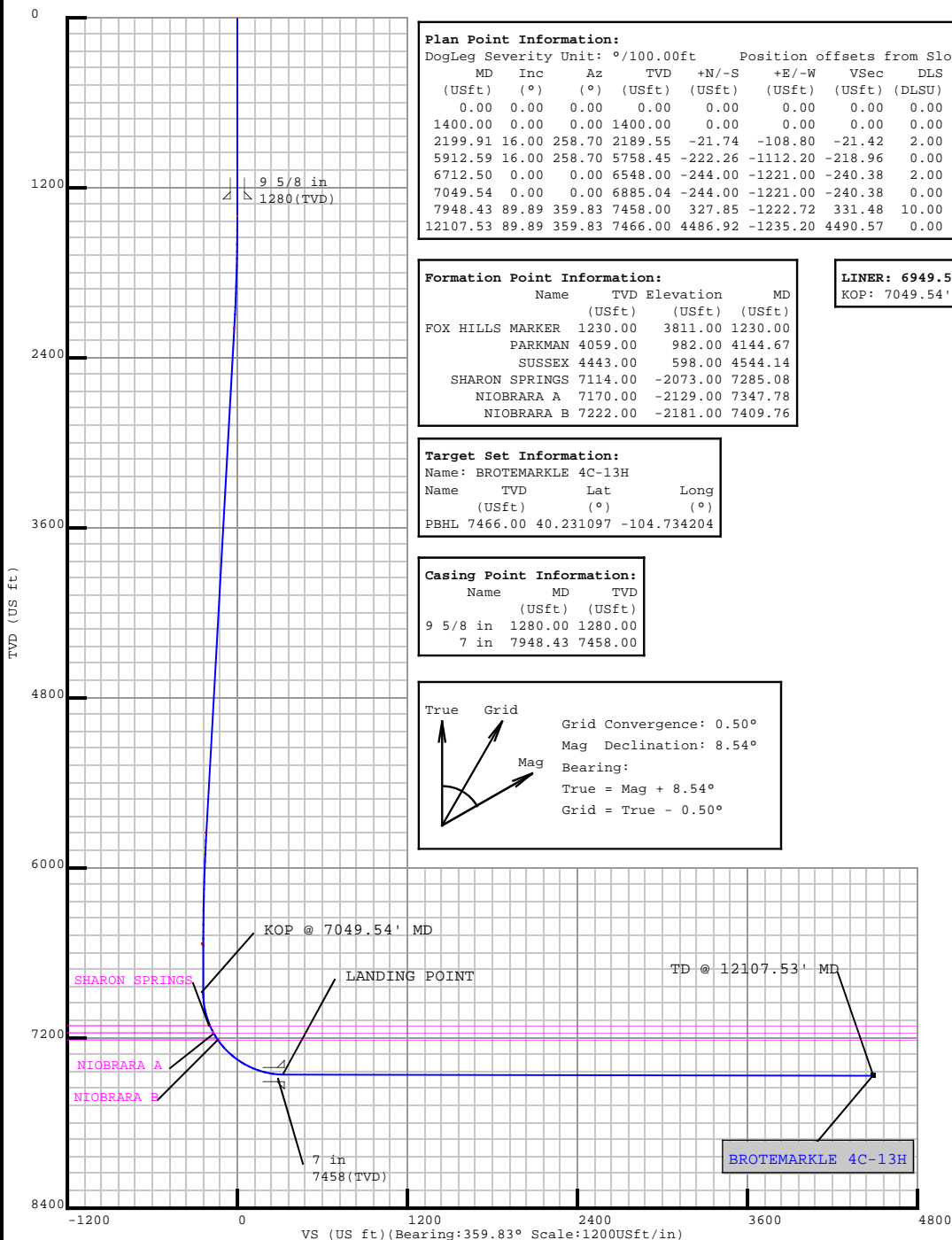
Name: BROTEMARKLE 4C-13H
Name TVD Lat Long
(USft) (°) (°)
PBHL 7466.00 40.231097 -104.734204

Casing Point Information:

Name	MD	TVD
(USft)	(USft)	(USft)
9 5/8 in	1280.00	1280.00
7 in	7948.43	7458.00



Grid Convergence: 0.50°
Mag Declination: 8.54°
Bearing:
True = Mag + 8.54°
Grid = True - 0.50°



Plan Surveys for the BROTEMARKLE 4C-13H

Site Name BROTEMARKLE 4C-13HZ PAD	Units : US ft	North Reference : True	Convergence Angle : 0.50
	Position	Northing : 1323477.82 US ft	Latitude : 40.218780
		Easting : 3215084.96 US ft	Longitude : -104.729780
	Elevation above: 5024.00 US ft Comment :		
Slot Name BROTEMARKLE 4C-13H	Position (Offsets relative to Site Centre)		
	+N / -S : 0.00 US ft	Northing : 1323477.82 US ft	Latitude : 40.218780
	+E / -W : -0.00 US ft	Easting : 3215084.96 US ft	Longitude : -104.729780
	Slot TVD Reference : Ground Elevation		
	Elevation above : 5024.00 US ft Comment :		
Well Name BROTEMARKLE 4C-13H	Type : Main well	UWI :	Plan : PLAN 1
	Rig Height Drill Floor : 17.00 US ft	Comment :	
	Relative to : 5041.00 US ft		
	Closure Distance : 4653.84 US ft	Closure Azimuth : 344.608°	
	Vertical Section (Position of Origin Relative to Slot)		
	+N / -S : -0.00 US ft	+E / -W : 0.00 US ft	Az : 359.83°
	Magnetic Parameters		
	Model : BGGM	Field Strength : 52749.1nT	Dec : 8.54°
			Dip : 66.82°
			Date : 17/Nov/2013

Target Set**Name :** BROTEMARKLE 4C-13H**Number of Targets :** 1**Comment :**

TargetName:	Position (Relative to centre)			
PBHL	+N / -S : 4486.92US ft +E / -W : -1235.20 US ft TVD (Drill Floor) : 7466.00 US ft			
Shape:	Northing : 1327953.84 US ft Easting : 3213810.84US ft Latitude : 40°13'51.949200" Longitude : -104°44'3.134400"			
Cuboid	Orientation Dimensions			
	Azimuth : 0.00°	Inclination : 0.00°		
	Length : 20.00 US ft	Breadth : 20.00 US ft	Height : 20.00 US ft	

Casing Points (Relative to centre, TVD relative to Drill Floor)								
Name	MD (US ft)	Inc (°)	Az (°)	TVD (US ft)	N.Offset (US ft)	E.Offset (US ft)	Latitude (°)	Longitude (°)
9 5/8 in	1280.00	0.00	0.00	1280.00	0.00	0.00	40.218780	-104.729780
7 in	7948.43	89.89	359.83	7458.00	327.85	-1222.72	40.219680	-104.734159

Well path created using minimum curvature

Salient Points (Relative to centre, TVD relative to Drill Floor)											
MD (US ft)	Inc (°)	Az (°)	TVD (US ft)	N.Offset (US ft)	E.Offset (US ft)	Latitude (°)	Longitude (°)	DLS (°/100 US ft)	T.Face (°)	VS (US ft)	Comment
0.00	0.00	0.00	0.00	0.00	0.00	40.218780	-104.729780	0.00	0.00	0.00	
1230.00	0.00	0.00	1230.00	0.00	0.00	40.218780	-104.729780	0.00	0.00	0.00	FOX HILLS MARKER :
1280.00	0.00	0.00	1280.00	0.00	0.00	40.218780	-104.729780	0.00	0.00	0.00	9 5/8 in
1400.00	0.00	0.00	1400.00	0.00	0.00	40.218780	-104.729780	0.00	0.00	0.00	
2199.91	16.00	258.70	2189.55	-21.74	-108.80	40.218720	-104.730170	2.00	258.70	-21.42	
4144.67	16.00	258.70	4059.00	-126.78	-634.40	40.218432	-104.732052	0.00	0.00	-124.89	PARKMAN :
4544.14	16.00	258.70	4443.00	-148.35	-742.36	40.218373	-104.732438	0.00	0.00	-146.15	SUSSEX :
5912.59	16.00	258.70	5758.45	-222.26	-1112.20	40.218170	-104.733763	0.00	0.00	-218.96	
6712.50	0.00	0.00	6548.00	-244.00	-1221.00	40.218110	-104.734152	2.00	180.00	-240.37	
7049.54	0.00	0.00	6885.04	-244.00	-1221.00	40.218110	-104.734152	0.00	0.00	-240.37	KOP @ 7049.54' MD
7285.08	23.55	359.83	7114.00	-196.26	-1221.14	40.218241	-104.734153	10.00	359.83	-192.64	SHARON SPRINGS :
7347.78	29.82	359.83	7170.00	-168.11	-1221.23	40.218318	-104.734153	10.00	0.00	-164.49	NIOBRARA A :
7409.76	36.02	359.83	7222.00	-134.44	-1221.33	40.218411	-104.734154	10.00	0.00	-130.82	NIOBRARA B :
7948.43	89.89	359.83	7458.00	327.85	-1222.72	40.219680	-104.734159	10.00	0.00	331.48	7 in

5D Plan Report

Salient Points (Relative to centre, TVD relative to Drill Floor)											
MD (US ft)	Inc (°)	Az (°)	TVD (US ft)	N.Offset (US ft)	E.Offset (US ft)	Latitude (°)	Longitude (°)	DLS (°/100 US ft)	T.Face (°)	VS (US ft)	Comment
7948.43	89.89	359.83	7458.00	327.85	-1222.72	40.219680	-104.734159	0.00	0.00	331.48	LANDING POINT
12107.53	89.89	359.83	7466.00	4486.92	-1235.20	40.231097	-104.734204	0.00	0.00	4490.57	TD @ 12107.53' MD

Interpolated Points (Relative to centre, TVD relative to Drill Floor)											
MD (US ft)	Inc (°)	Az (°)	TVD (US ft)	N.Offset (US ft)	E.Offset (US ft)		DLS (°/100 US ft)	T.Face (°)		VS (US ft)	Comment
0.00	0.00	0.00	0.00	0.00	0.00		0.00	0.00		0.00	
100.00	0.00	0.00	100.00	0.00	0.00		0.00	0.00		0.00	
200.00	0.00	0.00	200.00	0.00	0.00		0.00	0.00		0.00	
300.00	0.00	0.00	300.00	0.00	0.00		0.00	0.00		0.00	
400.00	0.00	0.00	400.00	0.00	0.00		0.00	0.00		0.00	
500.00	0.00	0.00	500.00	0.00	0.00		0.00	0.00		0.00	
600.00	0.00	0.00	600.00	0.00	0.00		0.00	0.00		0.00	
700.00	0.00	0.00	700.00	0.00	0.00		0.00	0.00		0.00	
800.00	0.00	0.00	800.00	0.00	0.00		0.00	0.00		0.00	
900.00	0.00	0.00	900.00	0.00	0.00		0.00	0.00		0.00	
1000.00	0.00	0.00	1000.00	0.00	0.00		0.00	0.00		0.00	
1100.00	0.00	0.00	1100.00	0.00	0.00		0.00	0.00		0.00	
1200.00	0.00	0.00	1200.00	0.00	0.00		0.00	0.00		0.00	
1230.00	0.00	0.00	1230.00	0.00	0.00		0.00	0.00		0.00	
1280.00	0.00	0.00	1280.00	0.00	0.00		0.00	0.00		0.00	
1300.00	0.00	0.00	1300.00	0.00	0.00		0.00	0.00		0.00	
1400.00	0.00	0.00	1400.00	0.00	0.00		0.00	0.00		0.00	
1500.00	2.00	258.70	1499.98	-0.34	-1.71		2.00	258.70		-0.34	
1600.00	4.00	258.70	1599.84	-1.37	-6.84		2.00	0.00		-1.35	
1700.00	6.00	258.70	1699.45	-3.08	-15.39		2.00	0.00		-3.03	
1800.00	8.00	258.70	1798.70	-5.46	-27.34		2.00	0.00		-5.38	
1900.00	10.00	258.70	1897.47	-8.53	-42.68		2.00	0.00		-8.40	
2000.00	12.00	258.70	1995.62	-12.27	-61.39		2.00	0.00		-12.08	
2100.00	14.00	258.70	2093.06	-16.68	-83.45		2.00	0.00		-16.43	
2199.91	16.00	258.70	2189.55	-21.74	-108.80		2.00	0.00		-21.42	
2200.00	16.00	258.70	2189.64	-21.75	-108.83		0.00	0.00		-21.42	
2300.00	16.00	258.70	2285.77	-27.15	-135.85		0.00	0.00		-26.74	
2400.00	16.00	258.70	2381.90	-32.55	-162.88		0.00	0.00		-32.06	
2500.00	16.00	258.70	2478.02	-37.95	-189.90		0.00	0.00		-37.38	
2600.00	16.00	258.70	2574.15	-43.35	-216.93		0.00	0.00		-42.70	
2700.00	16.00	258.70	2670.28	-48.75	-243.96		0.00	0.00		-48.03	
2800.00	16.00	258.70	2766.41	-54.15	-270.98		0.00	0.00		-53.35	
2900.00	16.00	258.70	2862.53	-59.55	-298.01		0.00	0.00		-58.67	
3000.00	16.00	258.70	2958.66	-64.95	-325.04		0.00	0.00		-63.99	
3100.00	16.00	258.70	3054.79	-70.35	-352.06		0.00	0.00		-69.31	

FOX HILLS MARKER :
9 5/8 in

5D Plan Report

Interpolated Points (Relative to centre, TVD relative to Drill Floor)									
MD (US ft)	Inc (°)	Az (°)	TVD (US ft)	N.Offset (US ft)	E.Offset (US ft)	DLS (°/100 US ft)	T.Face (°)	VS (US ft)	Comment
3200.00	16.00	258.70	3150.91	-75.76	-379.09	0.00	0.00	-74.63	
3300.00	16.00	258.70	3247.04	-81.16	-406.11	0.00	0.00	-79.95	
3400.00	16.00	258.70	3343.17	-86.56	-433.14	0.00	0.00	-85.27	
3500.00	16.00	258.70	3439.29	-91.96	-460.17	0.00	0.00	-90.59	
3600.00	16.00	258.70	3535.42	-97.36	-487.19	0.00	0.00	-95.91	
3700.00	16.00	258.70	3631.55	-102.76	-514.22	0.00	0.00	-101.23	
3800.00	16.00	258.70	3727.68	-108.16	-541.25	0.00	0.00	-106.55	
3900.00	16.00	258.70	3823.80	-113.56	-568.27	0.00	0.00	-111.87	
4000.00	16.00	258.70	3919.93	-118.96	-595.30	0.00	0.00	-117.19	
4100.00	16.00	258.70	4016.06	-124.36	-622.32	0.00	0.00	-122.51	
4144.67	16.00	258.70	4059.00	-126.78	-634.40	0.00	0.00	-124.89	PARKMAN :
4200.00	16.00	258.70	4112.18	-129.76	-649.35	0.00	0.00	-127.83	
4300.00	16.00	258.70	4208.31	-135.16	-676.38	0.00	0.00	-133.16	
4400.00	16.00	258.70	4304.44	-140.57	-703.40	0.00	0.00	-138.48	
4500.00	16.00	258.70	4400.57	-145.97	-730.43	0.00	0.00	-143.80	
4544.14	16.00	258.70	4443.00	-148.35	-742.36	0.00	0.00	-146.15	SUSSEX :
4600.00	16.00	258.70	4496.69	-151.37	-757.46	0.00	0.00	-149.12	
4700.00	16.00	258.70	4592.82	-156.77	-784.48	0.00	0.00	-154.44	
4800.00	16.00	258.70	4688.95	-162.17	-811.51	0.00	0.00	-159.76	
4900.00	16.00	258.70	4785.07	-167.57	-838.53	0.00	0.00	-165.08	
5000.00	16.00	258.70	4881.20	-172.97	-865.56	0.00	0.00	-170.40	
5100.00	16.00	258.70	4977.33	-178.37	-892.59	0.00	0.00	-175.72	
5200.00	16.00	258.70	5073.45	-183.77	-919.61	0.00	0.00	-181.04	
5300.00	16.00	258.70	5169.58	-189.17	-946.64	0.00	0.00	-186.36	
5400.00	16.00	258.70	5265.71	-194.57	-973.67	0.00	0.00	-191.68	
5500.00	16.00	258.70	5361.84	-199.97	-1000.69	0.00	0.00	-197.00	
5600.00	16.00	258.70	5457.96	-205.38	-1027.72	0.00	0.00	-202.32	
5700.00	16.00	258.70	5554.09	-210.78	-1054.75	0.00	0.00	-207.64	
5800.00	16.00	258.70	5650.22	-216.18	-1081.77	0.00	0.00	-212.96	
5900.00	16.00	258.70	5746.34	-221.58	-1108.80	0.00	0.00	-218.29	
5912.59	16.00	258.70	5758.45	-222.26	-1112.20	0.00	0.00	-218.96	
6000.00	14.25	258.70	5842.83	-226.73	-1134.56	2.00	180.00	-223.36	
6100.00	12.25	258.70	5940.16	-231.22	-1157.04	2.00	180.00	-227.78	
6200.00	10.25	258.70	6038.23	-235.04	-1176.17	2.00	180.00	-231.55	
6300.00	8.25	258.70	6136.93	-238.19	-1191.93	2.00	180.00	-234.65	
6400.00	6.25	258.70	6236.12	-240.66	-1204.30	2.00	180.00	-237.09	
6500.00	4.25	258.70	6335.70	-242.46	-1213.28	2.00	180.00	-238.85	
6600.00	2.25	258.70	6435.53	-243.57	-1218.83	2.00	180.00	-239.95	
6700.00	0.25	258.70	6535.50	-243.99	-1220.97	2.00	180.00	-240.37	
6712.50	0.00	0.00	6548.00	-244.00	-1221.00	2.00	180.00	-240.37	
6800.00	0.00	0.00	6635.50	-244.00	-1221.00	0.00	0.00	-240.37	

5D Plan Report

Interpolated Points (Relative to centre, TVD relative to Drill Floor)									
MD (US ft)	Inc (°)	Az (°)	TVD (US ft)	N.Offset (US ft)	E.Offset (US ft)	DLS (°/100 US ft)	T.Face (°)	VS (US ft)	Comment
6900.00	0.00	0.00	6735.50	-244.00	-1221.00	0.00	0.00	-240.37	
7000.00	0.00	0.00	6835.50	-244.00	-1221.00	0.00	0.00	-240.37	
7049.54	0.00	0.00	6885.04	-244.00	-1221.00	0.00	0.00	-240.37	KOP @ 7049.54' MD
7100.00	5.05	359.83	6935.44	-241.78	-1221.01	10.00	359.83	-238.15	
7200.00	15.05	359.83	7033.78	-224.36	-1221.06	10.00	0.00	-220.73	
7285.08	23.55	359.83	7114.00	-196.26	-1221.14	10.00	0.00	-192.64	SHARON SPRINGS :
7300.00	25.05	359.83	7127.60	-190.12	-1221.16	10.00	0.00	-186.50	
7347.78	29.82	359.83	7170.00	-168.11	-1221.23	10.00	0.00	-164.49	NIOBRARA A :
7400.00	35.05	359.83	7214.05	-140.12	-1221.31	10.00	0.00	-136.49	
7409.76	36.02	359.83	7222.00	-134.44	-1221.33	10.00	0.00	-130.82	NIOBRARA B :
7500.00	45.05	359.83	7290.51	-75.86	-1221.51	10.00	0.00	-72.23	
7600.00	55.05	359.83	7354.64	0.70	-1221.73	10.00	0.00	4.33	
7700.00	65.05	359.83	7404.51	87.23	-1221.99	10.00	0.00	90.86	
7800.00	75.05	359.83	7438.59	181.11	-1222.28	10.00	0.00	184.74	
7900.00	85.05	359.83	7455.86	279.48	-1222.57	10.00	0.00	283.11	
7948.43	89.89	359.83	7458.00	327.85	-1222.72	10.00	0.00	331.48	7 in
7948.43	89.89	359.83	7458.00	327.85	-1222.72	0.00	0.00	331.48	LANDING POINT
8000.00	89.89	359.83	7458.10	379.42	-1222.87	0.00	0.00	383.05	
8100.00	89.89	359.83	7458.29	479.42	-1223.17	0.00	0.00	483.05	
8200.00	89.89	359.83	7458.48	579.42	-1223.47	0.00	0.00	583.05	
8300.00	89.89	359.83	7458.67	679.42	-1223.77	0.00	0.00	683.05	
8400.00	89.89	359.83	7458.87	779.42	-1224.07	0.00	0.00	783.05	
8500.00	89.89	359.83	7459.06	879.41	-1224.37	0.00	0.00	883.05	
8600.00	89.89	359.83	7459.25	979.41	-1224.67	0.00	0.00	983.05	
8700.00	89.89	359.83	7459.44	1079.41	-1224.97	0.00	0.00	1083.04	
8800.00	89.89	359.83	7459.64	1179.41	-1225.27	0.00	0.00	1183.04	
8900.00	89.89	359.83	7459.83	1279.41	-1225.57	0.00	0.00	1283.04	
9000.00	89.89	359.83	7460.02	1379.41	-1225.87	0.00	0.00	1383.04	
9100.00	89.89	359.83	7460.21	1479.41	-1226.17	0.00	0.00	1483.04	
9200.00	89.89	359.83	7460.41	1579.41	-1226.47	0.00	0.00	1583.04	
9300.00	89.89	359.83	7460.60	1679.41	-1226.77	0.00	0.00	1683.04	
9400.00	89.89	359.83	7460.79	1779.41	-1227.07	0.00	0.00	1783.04	
9500.00	89.89	359.83	7460.98	1879.41	-1227.37	0.00	0.00	1883.04	
9600.00	89.89	359.83	7461.17	1979.41	-1227.67	0.00	0.00	1983.04	
9700.00	89.89	359.83	7461.37	2079.41	-1227.97	0.00	0.00	2083.04	
9800.00	89.89	359.83	7461.56	2179.41	-1228.27	0.00	0.00	2183.04	
9900.00	89.89	359.83	7461.75	2279.41	-1228.57	0.00	0.00	2283.04	
10000.00	89.89	359.83	7461.94	2379.40	-1228.87	0.00	0.00	2383.04	
10100.00	89.89	359.83	7462.14	2479.40	-1229.17	0.00	0.00	2483.04	
10200.00	89.89	359.83	7462.33	2579.40	-1229.47	0.00	0.00	2583.04	
10300.00	89.89	359.83	7462.52	2679.40	-1229.77	0.00	0.00	2683.04	

5D Plan Report

Interpolated Points (Relative to centre, TVD relative to Drill Floor)									
MD (US ft)	Inc (°)	Az (°)	TVD (US ft)	N.Offset (US ft)	E.Offset (US ft)	DLS (°/100 US ft)	T.Face (°)	VS (US ft)	Comment
10400.00	89.89	359.83	7462.71	2779.40	-1230.07	0.00	0.00	2783.04	
10500.00	89.89	359.83	7462.91	2879.40	-1230.37	0.00	0.00	2883.04	
10600.00	89.89	359.83	7463.10	2979.40	-1230.67	0.00	0.00	2983.04	
10700.00	89.89	359.83	7463.29	3079.40	-1230.97	0.00	0.00	3083.04	
10800.00	89.89	359.83	7463.48	3179.40	-1231.27	0.00	0.00	3183.04	
10900.00	89.89	359.83	7463.68	3279.40	-1231.57	0.00	0.00	3283.04	
11000.00	89.89	359.83	7463.87	3379.40	-1231.87	0.00	0.00	3383.04	
11100.00	89.89	359.83	7464.06	3479.40	-1232.17	0.00	0.00	3483.04	
11200.00	89.89	359.83	7464.25	3579.40	-1232.47	0.00	0.00	3583.04	
11300.00	89.89	359.83	7464.45	3679.40	-1232.77	0.00	0.00	3683.04	
11400.00	89.89	359.83	7464.64	3779.40	-1233.07	0.00	0.00	3783.04	
11500.00	89.89	359.83	7464.83	3879.40	-1233.37	0.00	0.00	3883.04	
11600.00	89.89	359.83	7465.02	3979.39	-1233.67	0.00	0.00	3983.04	
11700.00	89.89	359.83	7465.22	4079.39	-1233.97	0.00	0.00	4083.04	
11800.00	89.89	359.83	7465.41	4179.39	-1234.27	0.00	0.00	4183.04	
11900.00	89.89	359.83	7465.60	4279.39	-1234.57	0.00	0.00	4283.04	
12000.00	89.89	359.83	7465.79	4379.39	-1234.88	0.00	0.00	4383.04	
12100.00	89.89	359.83	7465.99	4479.39	-1235.18	0.00	0.00	4483.04	
12107.53	89.89	359.83	7466.00	4486.92	-1235.20	0.00	0.00	4490.57	TD @ 12107.53' MD

Formation Points (Relative to centre, TVD relative to Drill Floor)		
Name	MD (US ft)	TVD (US ft)
FOX HILLS MARKER	1230.00	1230.00
PARKMAN	4144.67	4059.00
SUSSEX	4544.14	4443.00
SHARON SPRINGS	7285.08	7114.00
NIOBRARA A	7347.78	7170.00
NIOBRARA B	7409.76	7222.00