

**5D Plan Report**

---

**Anadarko Petroleum**

**Field Name:** *WATTENBURG\_NAD83*  
**Site Name:** *BROTEMARKLE 4C-13HZ PAD*  
**Well Name:** *BROTEMARKLE 29N-13HZ*  
**Plan:** *PLAN 1*

---





**Plan Data for BROTEMARKLE 29N-13HZ**

**Field: WATTENBURG\_NAD83**

Map Unit: USFT Vertical Reference Datum (VRD): Mean Sea Level  
Projected Coordinate System: NAD83 / Colorado North (ftUS)

**Site: BROTEMARKLE 4C-13HZ PAD**

Unit: USFeet TVD Reference:  
Company Name: Anadarko Petroleum  
Position: Northing: 1323477.82USft Latitude: 40.218780°  
Easting: 3215084.96USft Longitude: -104.729780°  
North Reference: True Grid Convergence: 0.50°  
Elevation Above VRD: 5024.00USft

**Slot: BROTEMARKLE 29N-13HZ**

Position:  
Offset is from Site centre  
+N/-S: -0.36USft Northing: 1323477.98USft Latitude: 40.218779°  
+E/-W: 60.04USft Easting: 3215145.00USft Longitude: -104.729565°  
Elevation Above VRD: 5024.00USft

**Well: BROTEMARKLE 29N-13HZ**

Type: Main-Well  
File Number:  
Vertical Section: Position offset of origin from Slot centre:  
+N/-S: 0.36USft Azimuth: 359.83°  
+E/-W: -60.04USft  
Magnetic Parameters:  
Model: Field Strength: Declination: Dip: Date:  
BGM 52749(nT) 8.54° 66.82° 2013-11-17

**Plan Point Information:**

DogLeg Severity Unit: °/100.00ft										Position offsets from Slot centre		
MD	Inc	Az	TVD	+N/-S	+E/-W	VSec	DLS	Toolface	Build	Turn		
(USft)	(°)	(°)	(USft)	(USft)	(USft)	(USft)	(DLSU)	(°)	(DLSU)	(DLSU)		
0.00	0.00	0.00	0.00	0.00	0.00	0.00	0.00	0.0	0.00	0.00		
1400.00	0.00	0.00	1400.00	0.00	0.00	0.00	0.00	0.0	0.00	0.00		
2200.21	16.00	230.25	2189.84	-71.00	-85.37	-70.74	2.00	230.3	2.00	0.00		
2767.51	16.00	230.25	2735.16	-171.00	-205.63	-170.39	0.00	0.0	0.00	0.00		
3567.72	0.00	0.00	3525.00	-242.00	-291.00	-241.14	2.00	180.0	-2.00	0.00		
6691.76	0.00	0.00	6649.04	-242.00	-291.00	-241.14	0.00	0.0	0.00	0.00		
7591.76	90.00	359.83	7222.00	330.96	-292.71	331.82	10.00	359.8	10.00	0.00		
11769.21	90.00	359.83	7222.00	4508.38	-305.18	4509.27	0.00	0.0	0.00	0.00		

**Formation Point Information:**

Name	TVD Elevation	MD
(USft)	(USft)	(USft)
FOX HILLS MARKER	1230.00	3811.00
PARKMAN	4051.00	990.00
SUSSEX	4435.00	606.00
SHARON SPRINGS	7106.00	-2065.00
NIOBRARA A	7162.00	-2121.00
NIOBRARA B	7214.00	-2173.00

**LINER: 6591.76' MD**

**KOP: 6691.76' MD**

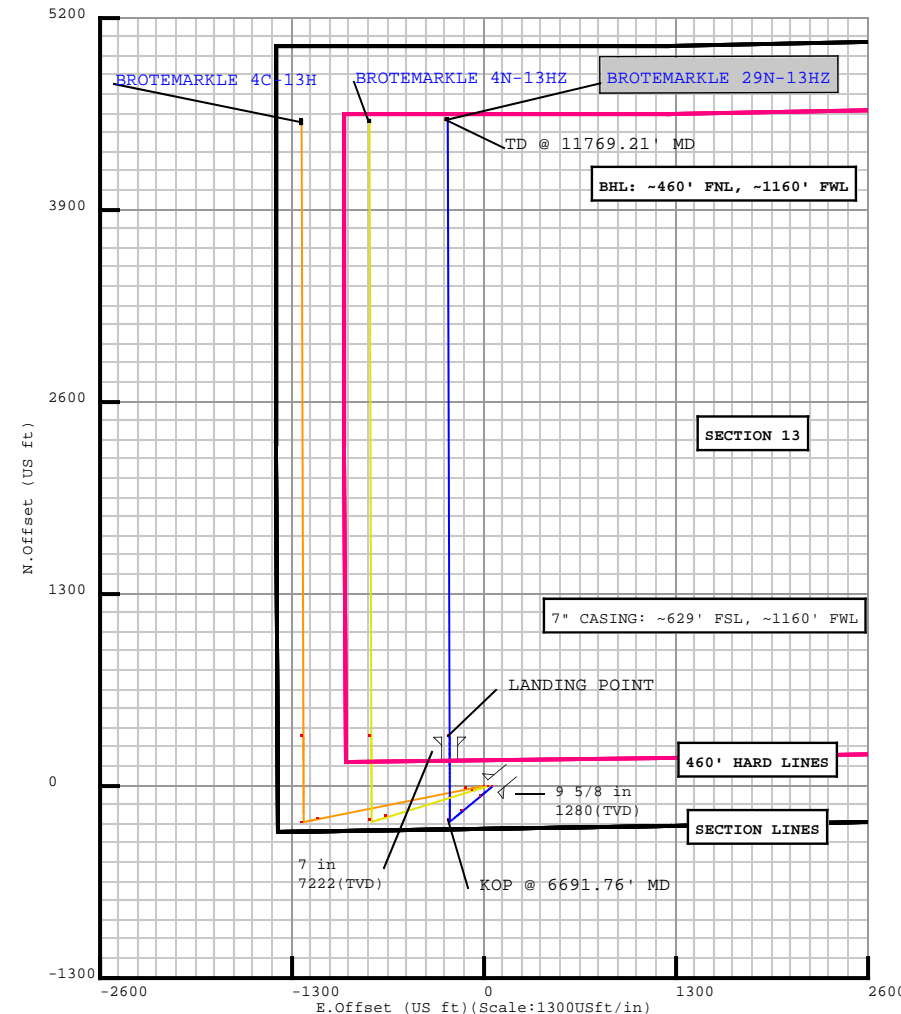
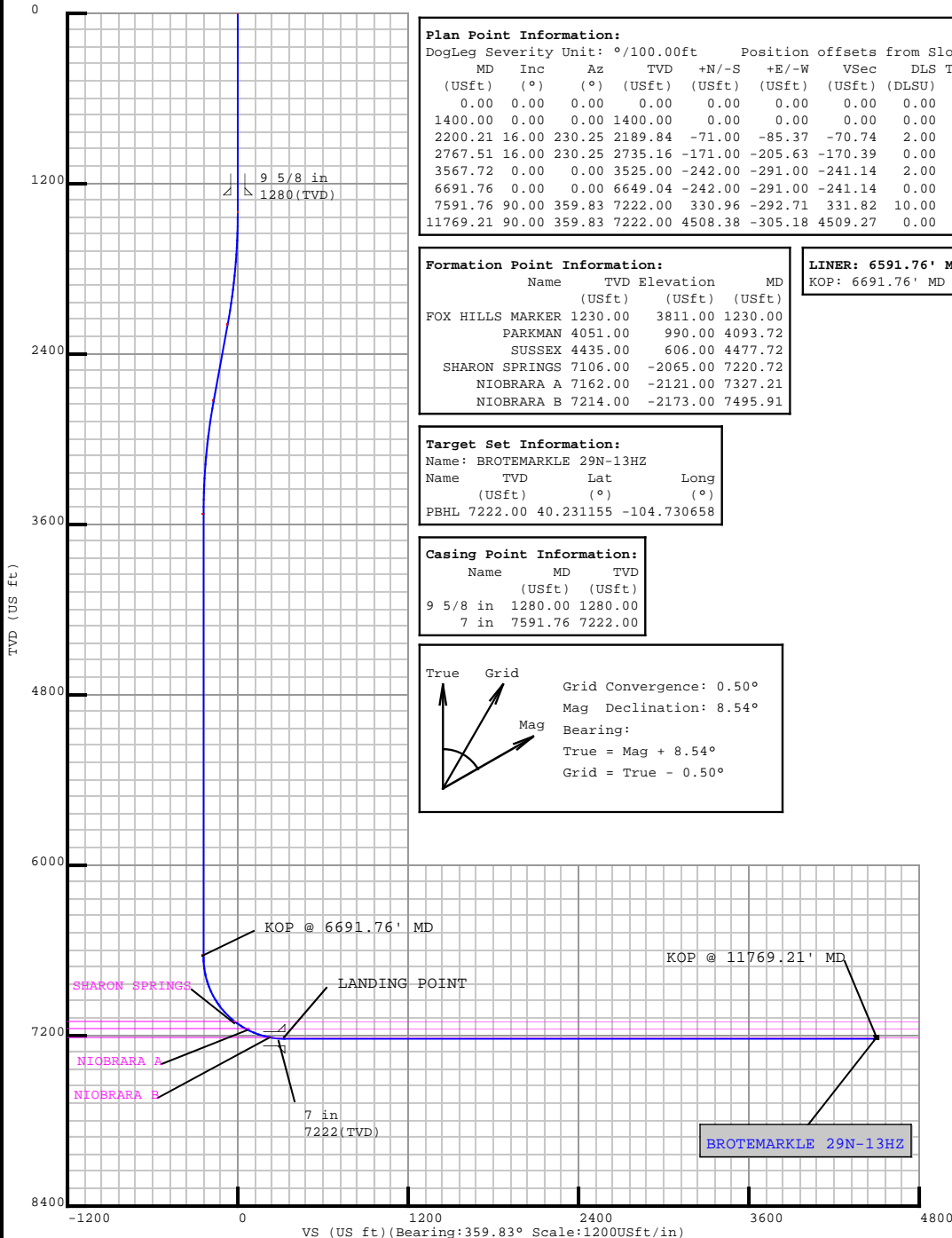
**Target Set Information:**

Name	TVD	Lat	Long
(USft)	(°)	(°)	(°)
PBHL	7222.00	40.231155	-104.730658

**Casing Point Information:**

Name	MD	TVD
(USft)	(USft)	(USft)
9 5/8 in	1280.00	1280.00
7 in	7591.76	7222.00

True Grid  
Grid Convergence: 0.50°  
Mag Declination: 8.54°  
Bearing:  
True = Mag + 8.54°  
Grid = True - 0.50°



## Plan Surveys for the BROTEMARKLE 29N-13HZ

<b>Site Name</b>  BROTEMARKLE 4C-13HZ PAD	<b>Units :</b> US ft	<b>North Reference :</b> True	<b>Convergence Angle :</b> 0.50
	<b>Position</b>	<b>Northing :</b> 1323477.82 US ft	<b>Latitude :</b> 40.218780
		<b>Easting :</b> 3215084.96 US ft	<b>Longitude :</b> -104.729780
	<b>Elevation above:</b> 5024.00 US ft <b>Comment :</b>		
<b>Slot Name</b>  BROTEMARKLE 29N-13HZ	<b>Position (Offsets relative to Site Centre)</b>		
	<b>+N / -S :</b> -0.36 US ft	<b>Northing :</b> 1323477.98 US ft	<b>Latitude :</b> 40.218779
	<b>+E / -W :</b> 60.04 US ft	<b>Easting :</b> 3215145.00 US ft	<b>Longitude :</b> -104.729565
	<b>Slot TVD Reference :</b> Ground Elevation <b>Elevation above :</b> 5024.00 US ft <b>Comment :</b>		
<b>Well Name</b>  BROTEMARKLE 29N-13HZ	<b>Type :</b> Main well	<b>UWI :</b>	<b>Plan :</b> PLAN 1
	<b>Rig Height</b> <b>Drill Floor :</b> 17.00 US ft	<b>Comment :</b>	
	<b>Relative to :</b> 5041.00 US ft		
	<b>Closure Distance :</b> 4518.7 US ft	<b>Closure Azimuth :</b> 356.127°	
	<b>Vertical Section (Position of Origin Relative to Slot )</b>		
	<b>+N / -S :</b> 0.36 US ft	<b>+E / -W :</b> -60.04 US ft	<b>Az :</b> 359.83°
	<b>Magnetic Parameters</b>		
	<b>Model :</b> BGGM	<b>Field Strength :</b> 52749.1nT	<b>Dec :</b> 8.54°
			<b>Dip :</b> 66.82°
			<b>Date :</b> 17/Nov/2013

## Target Set

Name : BROTEMARKLE 29N-13HZ

Number of Targets : 1

## Comment :

TargetName:	Position (Relative to centre)			
PBHL	<b>+N / -S : 4508.38US ft</b> <b>+E / -W : -305.18 US ft</b> <b>Latitude : 40°13'52.158000"</b> <b>Longitude : -104°43'50.368800"</b>			
Shape:	<b>TVD (Drill Floor) : 7222.00 US ft</b>			
Cuboid				
Orientation	<b>Azimuth : 0.00°</b>			
Dimensions	<b>Inclination : 0.00°</b> <b>Length : 20.00 US ft</b> <b>Breadth : 20.00 US ft</b> <b>Height : 20.00 US ft</b>			

Casing Points (Relative to centre, TVD relative to Drill Floor )								
Name	MD (US ft)	Inc (°)	Az (°)	TVD (US ft)	N.Offset (US ft)	E.Offset (US ft)	Latitude (°)	Longitude (°)
9 5/8 in	1280.00	0.00	0.00	1280.00	0.00	0.00	40.218779	-104.729565
7 in	7591.76	90.00	359.83	7222.00	330.96	-292.71	40.219688	-104.730613

## Well path created using minimum curvature

Salient Points (Relative to centre, TVD relative to Drill Floor )											
MD (US ft)	Inc (°)	Az (°)	TVD (US ft)	N.Offset (US ft)	E.Offset (US ft)	Latitude (°)	Longitude (°)	DLS (°/100 US ft)	T.Face (°)	VS (US ft)	Comment
0.00	0.00	0.00	0.00	0.00	0.00	40.218779	-104.729565	0.00	0.00	-0.54	
1230.00	0.00	0.00	1230.00	0.00	0.00	40.218779	-104.729565	0.00	0.00	-0.54	FOX HILLS MARKER :
1280.00	0.00	0.00	1280.00	0.00	0.00	40.218779	-104.729565	0.00	0.00	-0.54	9 5/8 in
1400.00	0.00	0.00	1400.00	0.00	0.00	40.218779	-104.729565	0.00	0.00	-0.54	
2200.21	16.00	230.25	2189.84	-71.00	-85.37	40.218584	-104.729871	2.00	230.25	-71.28	
2767.51	16.00	230.25	2735.16	-171.00	-205.63	40.218310	-104.730301	0.00	0.00	-170.93	
3567.72	0.00	0.00	3525.00	-242.00	-291.00	40.218115	-104.730607	2.00	180.00	-241.67	
4093.72	0.00	0.00	4051.00	-242.00	-291.00	40.218115	-104.730607	0.00	0.00	-241.67	PARKMAN :
4477.72	0.00	0.00	4435.00	-242.00	-291.00	40.218115	-104.730607	0.00	0.00	-241.67	SUSSEX :
6691.76	0.00	0.00	6649.04	-242.00	-291.00	40.218115	-104.730607	0.00	0.00	-241.67	KOP @ 6691.76' MD
7220.72	52.90	359.83	7106.00	-14.69	-291.68	40.218739	-104.730610	10.00	359.83	-14.36	SHARON SPRINGS :
7327.21	63.54	359.83	7162.00	75.70	-291.95	40.218987	-104.730610	10.00	0.00	76.03	NIOBRARA A :
7495.91	80.41	359.83	7214.00	235.55	-292.43	40.219426	-104.730612	10.00	0.00	235.88	NIOBRARA B :

## 5D Plan Report

Salient Points (Relative to centre, TVD relative to Drill Floor )											
MD (US ft)	Inc (°)	Az (°)	TVD (US ft)	N.Offset (US ft)	E.Offset (US ft)	Latitude (°)	Longitude (°)	DLS (°/100 US ft)	T.Face (°)	VS (US ft)	Comment
7591.76	90.00	359.83	7222.00	330.96	-292.71	40.219688	-104.730613	10.00	0.00	331.28	LANDING POINT; 7 in
11769.21	90.00	359.83	7222.00	4508.38	-305.18	40.231155	-104.730658	0.00	0.00	4508.73	TD @ 11769.21' MD
Interpolated Points (Relative to centre, TVD relative to Drill Floor )											
MD (US ft)	Inc (°)	Az (°)	TVD (US ft)	N.Offset (US ft)	E.Offset (US ft)		DLS (°/100 US ft)		T.Face (°)	VS (US ft)	Comment
0.00	0.00	0.00	0.00	0.00	0.00		0.00		0.00	-0.54	
100.00	0.00	0.00	100.00	0.00	0.00		0.00		0.00	-0.54	
200.00	0.00	0.00	200.00	0.00	0.00		0.00		0.00	-0.54	
300.00	0.00	0.00	300.00	0.00	0.00		0.00		0.00	-0.54	
400.00	0.00	0.00	400.00	0.00	0.00		0.00		0.00	-0.54	
500.00	0.00	0.00	500.00	0.00	0.00		0.00		0.00	-0.54	
600.00	0.00	0.00	600.00	0.00	0.00		0.00		0.00	-0.54	
700.00	0.00	0.00	700.00	0.00	0.00		0.00		0.00	-0.54	
800.00	0.00	0.00	800.00	0.00	0.00		0.00		0.00	-0.54	
900.00	0.00	0.00	900.00	0.00	0.00		0.00		0.00	-0.54	
1000.00	0.00	0.00	1000.00	0.00	0.00		0.00		0.00	-0.54	
1100.00	0.00	0.00	1100.00	0.00	0.00		0.00		0.00	-0.54	
1200.00	0.00	0.00	1200.00	0.00	0.00		0.00		0.00	-0.54	
1230.00	0.00	0.00	1230.00	0.00	0.00		0.00		0.00	-0.54	FOX HILLS MARKER : 9 5/8 in
1280.00	0.00	0.00	1280.00	0.00	0.00		0.00		0.00	-0.54	
1300.00	0.00	0.00	1300.00	0.00	0.00		0.00		0.00	-0.54	
1400.00	0.00	0.00	1400.00	0.00	0.00		0.00		0.00	-0.54	
1500.00	2.00	230.25	1499.98	-1.12	-1.34		2.00		230.25	-1.65	
1600.00	4.00	230.25	1599.84	-4.46	-5.37		2.00		0.00	-4.98	
1700.00	6.00	230.25	1699.45	-10.03	-12.07		2.00		0.00	-10.54	
1800.00	8.00	230.25	1798.70	-17.83	-21.44		2.00		0.00	-18.30	
1900.00	10.00	230.25	1897.47	-27.83	-33.46		2.00		0.00	-28.27	
2000.00	12.00	230.25	1995.62	-40.03	-48.13		2.00		0.00	-40.42	
2100.00	14.00	230.25	2093.06	-54.41	-65.43		2.00		0.00	-54.75	
2200.00	16.00	230.25	2189.64	-70.96	-85.33		2.00		0.00	-71.24	
2200.21	16.00	230.25	2189.84	-71.00	-85.37		0.00		0.00	-71.28	
2300.00	16.00	230.25	2285.77	-88.59	-106.53		0.00		0.00	-88.81	
2400.00	16.00	230.25	2381.89	-106.22	-127.72		0.00		0.00	-106.38	
2500.00	16.00	230.25	2478.02	-123.85	-148.92		0.00		0.00	-123.94	
2600.00	16.00	230.25	2574.14	-141.47	-170.12		0.00		0.00	-141.51	
2700.00	16.00	230.25	2670.26	-159.10	-191.32		0.00		0.00	-159.07	
2767.51	16.00	230.25	2735.16	-171.00	-205.63		0.00		0.00	-170.93	
2800.00	15.35	230.25	2766.44	-176.62	-212.38		2.00		180.00	-176.53	
2900.00	13.35	230.25	2863.31	-192.47	-231.44		2.00		180.00	-192.32	

## 5D Plan Report

Interpolated Points (Relative to centre, TVD relative to Drill Floor )									
MD (US ft)	Inc (°)	Az (°)	TVD (US ft)	N.Offset (US ft)	E.Offset (US ft)	DLS (°/100 US ft)	T.Face (°)	VS (US ft)	Comment
3000.00	11.35	230.25	2960.99	-206.15	-247.89	2.00	180.00	-205.95	
3100.00	9.35	230.25	3059.36	-217.64	-261.71	2.00	180.00	-217.40	
3200.00	7.35	230.25	3158.29	-226.93	-272.88	2.00	180.00	-226.66	
3300.00	5.35	230.25	3257.67	-234.01	-281.39	2.00	180.00	-233.71	
3400.00	3.35	230.25	3357.38	-238.86	-287.23	2.00	180.00	-238.55	
3500.00	1.35	230.25	3457.29	-241.49	-290.39	2.00	180.00	-241.16	
3567.72	0.00	0.00	3525.00	-242.00	-291.00	2.00	180.00	-241.67	
3600.00	0.00	0.00	3557.28	-242.00	-291.00	0.00	0.00	-241.67	
3700.00	0.00	0.00	3657.28	-242.00	-291.00	0.00	0.00	-241.67	
3800.00	0.00	0.00	3757.28	-242.00	-291.00	0.00	0.00	-241.67	
3900.00	0.00	0.00	3857.28	-242.00	-291.00	0.00	0.00	-241.67	
4000.00	0.00	0.00	3957.28	-242.00	-291.00	0.00	0.00	-241.67	
4093.72	0.00	0.00	4051.00	-242.00	-291.00	0.00	0.00	-241.67	PARKMAN :
4100.00	0.00	0.00	4057.28	-242.00	-291.00	0.00	0.00	-241.67	
4200.00	0.00	0.00	4157.28	-242.00	-291.00	0.00	0.00	-241.67	
4300.00	0.00	0.00	4257.28	-242.00	-291.00	0.00	0.00	-241.67	
4400.00	0.00	0.00	4357.28	-242.00	-291.00	0.00	0.00	-241.67	
4477.72	0.00	0.00	4435.00	-242.00	-291.00	0.00	0.00	-241.67	SUSSEX :
4500.00	0.00	0.00	4457.28	-242.00	-291.00	0.00	0.00	-241.67	
4600.00	0.00	0.00	4557.28	-242.00	-291.00	0.00	0.00	-241.67	
4700.00	0.00	0.00	4657.28	-242.00	-291.00	0.00	0.00	-241.67	
4800.00	0.00	0.00	4757.28	-242.00	-291.00	0.00	0.00	-241.67	
4900.00	0.00	0.00	4857.28	-242.00	-291.00	0.00	0.00	-241.67	
5000.00	0.00	0.00	4957.28	-242.00	-291.00	0.00	0.00	-241.67	
5100.00	0.00	0.00	5057.28	-242.00	-291.00	0.00	0.00	-241.67	
5200.00	0.00	0.00	5157.28	-242.00	-291.00	0.00	0.00	-241.67	
5300.00	0.00	0.00	5257.28	-242.00	-291.00	0.00	0.00	-241.67	
5400.00	0.00	0.00	5357.28	-242.00	-291.00	0.00	0.00	-241.67	
5500.00	0.00	0.00	5457.28	-242.00	-291.00	0.00	0.00	-241.67	
5600.00	0.00	0.00	5557.28	-242.00	-291.00	0.00	0.00	-241.67	
5700.00	0.00	0.00	5657.28	-242.00	-291.00	0.00	0.00	-241.67	
5800.00	0.00	0.00	5757.28	-242.00	-291.00	0.00	0.00	-241.67	
5900.00	0.00	0.00	5857.28	-242.00	-291.00	0.00	0.00	-241.67	
6000.00	0.00	0.00	5957.28	-242.00	-291.00	0.00	0.00	-241.67	
6100.00	0.00	0.00	6057.28	-242.00	-291.00	0.00	0.00	-241.67	
6200.00	0.00	0.00	6157.28	-242.00	-291.00	0.00	0.00	-241.67	
6300.00	0.00	0.00	6257.28	-242.00	-291.00	0.00	0.00	-241.67	
6400.00	0.00	0.00	6357.28	-242.00	-291.00	0.00	0.00	-241.67	
6500.00	0.00	0.00	6457.28	-242.00	-291.00	0.00	0.00	-241.67	
6600.00	0.00	0.00	6557.28	-242.00	-291.00	0.00	0.00	-241.67	
6691.76	0.00	0.00	6649.04	-242.00	-291.00	0.00	0.00	-241.67	KOP @ 6691.76' MD

## 5D Plan Report

Interpolated Points (Relative to centre, TVD relative to Drill Floor )									
MD (US ft)	Inc (°)	Az (°)	TVD (US ft)	N.Offset (US ft)	E.Offset (US ft)	DLS (°/100 US ft)	T.Face (°)	VS (US ft)	Comment
6700.00	0.82	359.83	6657.28	-241.94	-291.00	10.00	359.83	-241.61	
6800.00	10.82	359.83	6756.64	-231.81	-291.03	10.00	0.00	-231.48	
6900.00	20.82	359.83	6852.73	-204.57	-291.11	10.00	0.00	-204.25	
7000.00	30.82	359.83	6942.63	-161.07	-291.24	10.00	0.00	-160.74	
7100.00	40.82	359.83	7023.61	-102.61	-291.42	10.00	0.00	-102.28	
7200.00	50.82	359.83	7093.20	-30.98	-291.63	10.00	0.00	-30.66	
7220.72	52.90	359.83	7106.00	-14.69	-291.68	10.00	0.00	-14.36	SHARON SPRINGS :
7300.00	60.82	359.83	7149.31	51.64	-291.88	10.00	0.00	51.97	
7327.21	63.54	359.83	7162.00	75.70	-291.95	10.00	0.00	76.03	NIOBRARA A :
7400.00	70.82	359.83	7190.21	142.76	-292.15	10.00	0.00	143.08	
7495.91	80.41	359.83	7214.00	235.55	-292.43	10.00	0.00	235.88	NIOBRARA B :
7500.00	80.82	359.83	7214.67	239.59	-292.44	10.00	0.00	239.92	
7591.76	90.00	359.83	7222.00	330.96	-292.71	10.00	0.00	331.28	LANDING POINT; 7 in
7600.00	90.00	359.83	7222.00	339.20	-292.74	0.00	0.00	339.52	
7700.00	90.00	359.83	7222.00	439.19	-293.03	0.00	0.00	439.52	
7800.00	90.00	359.83	7222.00	539.19	-293.33	0.00	0.00	539.52	
7900.00	90.00	359.83	7222.00	639.19	-293.63	0.00	0.00	639.52	
8000.00	90.00	359.83	7222.00	739.19	-293.93	0.00	0.00	739.52	
8100.00	90.00	359.83	7222.00	839.19	-294.23	0.00	0.00	839.52	
8200.00	90.00	359.83	7222.00	939.19	-294.53	0.00	0.00	939.52	
8300.00	90.00	359.83	7222.00	1039.19	-294.82	0.00	0.00	1039.52	
8400.00	90.00	359.83	7222.00	1139.19	-295.12	0.00	0.00	1139.52	
8500.00	90.00	359.83	7222.00	1239.19	-295.42	0.00	0.00	1239.52	
8600.00	90.00	359.83	7222.00	1339.19	-295.72	0.00	0.00	1339.52	
8700.00	90.00	359.83	7222.00	1439.19	-296.02	0.00	0.00	1439.52	
8800.00	90.00	359.83	7222.00	1539.19	-296.32	0.00	0.00	1539.52	
8900.00	90.00	359.83	7222.00	1639.19	-296.62	0.00	0.00	1639.52	
9000.00	90.00	359.83	7222.00	1739.19	-296.91	0.00	0.00	1739.52	
9100.00	90.00	359.83	7222.00	1839.19	-297.21	0.00	0.00	1839.52	
9200.00	90.00	359.83	7222.00	1939.19	-297.51	0.00	0.00	1939.52	
9300.00	90.00	359.83	7222.00	2039.19	-297.81	0.00	0.00	2039.52	
9400.00	90.00	359.83	7222.00	2139.19	-298.11	0.00	0.00	2139.52	
9500.00	90.00	359.83	7222.00	2239.19	-298.41	0.00	0.00	2239.52	
9600.00	90.00	359.83	7222.00	2339.19	-298.70	0.00	0.00	2339.52	
9700.00	90.00	359.83	7222.00	2439.19	-299.00	0.00	0.00	2439.52	
9800.00	90.00	359.83	7222.00	2539.19	-299.30	0.00	0.00	2539.52	
9900.00	90.00	359.83	7222.00	2639.19	-299.60	0.00	0.00	2639.52	
10000.00	90.00	359.83	7222.00	2739.18	-299.90	0.00	0.00	2739.52	
10100.00	90.00	359.83	7222.00	2839.18	-300.20	0.00	0.00	2839.52	
10200.00	90.00	359.83	7222.00	2939.18	-300.50	0.00	0.00	2939.52	
10300.00	90.00	359.83	7222.00	3039.18	-300.79	0.00	0.00	3039.52	

## 5D Plan Report

Interpolated Points (Relative to centre, TVD relative to Drill Floor )									
MD (US ft)	Inc (°)	Az (°)	TVD (US ft)	N.Offset (US ft)	E.Offset (US ft)	DLS (°/100 US ft)	T.Face (°)	VS (US ft)	Comment
10400.00	90.00	359.83	7222.00	3139.18	-301.09	0.00	0.00	3139.52	
10500.00	90.00	359.83	7222.00	3239.18	-301.39	0.00	0.00	3239.52	
10600.00	90.00	359.83	7222.00	3339.18	-301.69	0.00	0.00	3339.52	
10700.00	90.00	359.83	7222.00	3439.18	-301.99	0.00	0.00	3439.52	
10800.00	90.00	359.83	7222.00	3539.18	-302.29	0.00	0.00	3539.52	
10900.00	90.00	359.83	7222.00	3639.18	-302.58	0.00	0.00	3639.52	
11000.00	90.00	359.83	7222.00	3739.18	-302.88	0.00	0.00	3739.52	
11100.00	90.00	359.83	7222.00	3839.18	-303.18	0.00	0.00	3839.52	
11200.00	90.00	359.83	7222.00	3939.18	-303.48	0.00	0.00	3939.52	
11300.00	90.00	359.83	7222.00	4039.18	-303.78	0.00	0.00	4039.52	
11400.00	90.00	359.83	7222.00	4139.18	-304.08	0.00	0.00	4139.52	
11500.00	90.00	359.83	7222.00	4239.18	-304.37	0.00	0.00	4239.52	
11600.00	90.00	359.83	7222.00	4339.18	-304.67	0.00	0.00	4339.52	
11700.00	90.00	359.83	7222.00	4439.18	-304.97	0.00	0.00	4439.52	
11769.21	90.00	359.83	7222.00	4508.38	-305.18	0.00	0.00	4508.73	TD @ 11769.21' MD

Formation Points (Relative to centre, TVD relative to Drill Floor )		
Name	MD (US ft)	TVD (US ft)
FOX HILLS MARKER	1230.00	1230.00
PARKMAN	4093.72	4051.00
SUSSEX	4477.72	4435.00
SHARON SPRINGS	7220.72	7106.00
NIOBRARA A	7327.21	7162.00
NIOBRARA B	7495.91	7214.00