



Ensign 123

135386

5":100' - MD

10/7/2013 6:45:35 PM

Oper. Company: Anadarko
Country: USA
State / Province: Colorado
County / Parish: Weld

API/UWI: 05-123-36311-0100
Field: DJ Basin
Well: Farley 2C-23HZX
Rig: 123

Gamma Ray
 Sidetrack started @ 7885'
 TD 11935'

Personnel

Day Hand: C. Van Oerle
Night Hand: A. Clark

Cathedral Energy Services
 1949 Pyrite Road
 Casper, Wyoming, 82604

Location

Latitude: 40.205100
Longitude: -104.741537
Elev. GL: 4979'
Elev. DF: 4992'
Elev. KB: 13'

Hole Data

| Size | From | To |
|-------|------|-------|
| 6.125 | 7885 | 11935 |

Casing Data

| Size | From | To |
|------|------|------|
| 7 | 13 | 7885 |

Mud Data

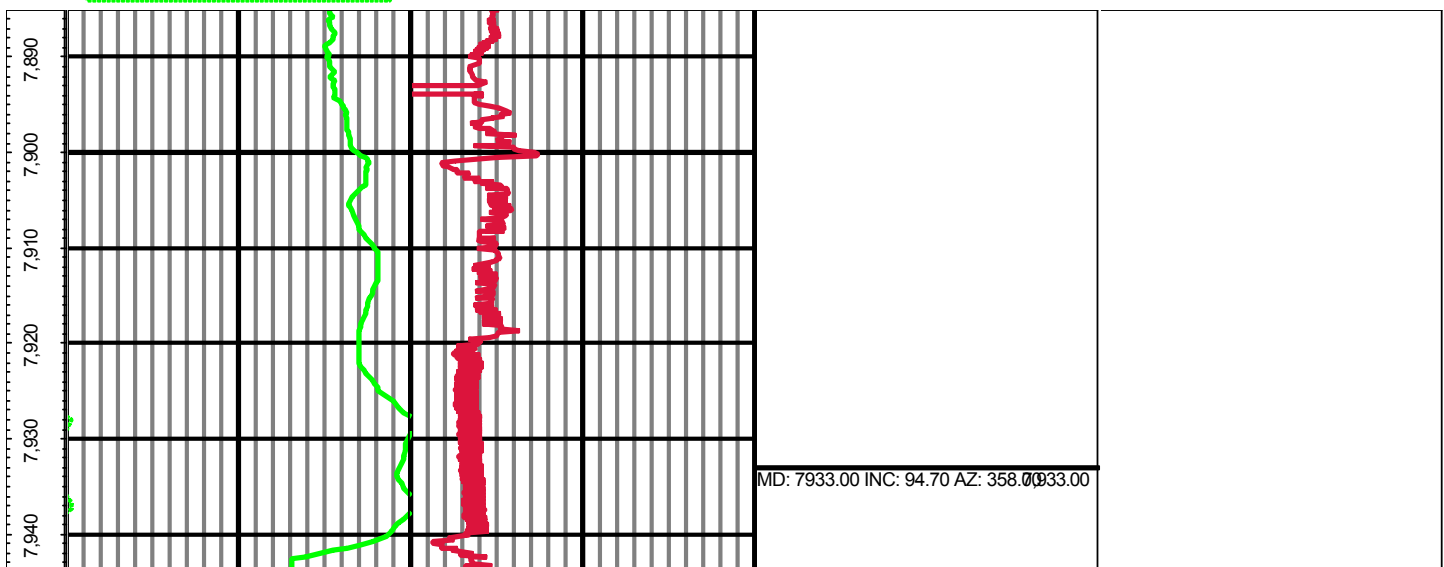
| Weight | From | To |
|--------|------|-------|
| 9.5 | 7885 | 11935 |

Tool Run Data

| Serial Number | Gamma Offset | Resist. Offset | Start Time | Start Depth | End Time | End Depth |
|---------------|--------------|----------------|----------------------|-------------|----------------------|-----------|
| 230 | 42.42 | 0 | 9/10/2013 2:30:15 PM | 7885 | 9/12/2013 7:30:15 PM | 11935 |

All interpretations are opinions based on inferences from electrical or other measurements and we cannot and do not guarantee the accuracy or correctness of any interpretation, and we shall not except in the case of gross or willful negligence on our part, be liable or responsible for any loss, cost damages or expenses incurred or sustained by anyone resulting from an interpretation made by any of our officers, agents, or employees.

MD 0.00 GR(API) 150.00 0.00 ROP(FT/HR) 600.00 Surveys (MD/INC/AZ)
 FT 150.00 2 300.00



MD: 7978.00 INC: 96.80 AZ: 356.9078.00

MD: 8023.00 INC: 96.20 AZ: 357.8023.00

MD: 8069.00 INC: 95.60 AZ: 356.8069.00

MD: 8159.00 INC: 92.60 AZ: 356.80159.00

MD: 8249.00 INC: 89.50 AZ: 360.00 8249.00

MD: 8339.00 INC: 88.80 AZ: 358.00 8339.00

MD: 8429.00 INC: 88.50 AZ: 359.80 8429.00

MD: 8519.00 INC: 89.90 AZ: 0.208,519.00

MD: 8609.00 INC: 92.40 AZ: 1.608,609.00

MD: 8699.00 INC: 90.80 AZ: 2.208,699.00

MD: 8789.00 INC: 88.80 AZ: 0.108,789.00

MD: 8879.00 INC: 90.30 AZ: 356.80 8879.00

MD: 8969.00 INC: 90.70 AZ: 351.80 8969.00

MD: 9059.00 INC: 91.50 AZ: 355.90 9059.00

MD: 9149.00 INC: 92.00 AZ: 355.90 9149.00

MD: 9239.00 INC: 90.30 AZ: 357.90 9239.00

MD: 9329.00 INC: 90.40 AZ: 359.00 9329.00

MD: 9419.00 INC: 89.30 AZ: 0.909,419.00

MD: 9509.00 INC: 89.50 AZ: 4.009,509.00

MD: 9599.00 INC: 87.30 AZ: 2.709,599.00

MD: 9690.00 INC: 86.90 AZ: 3.109,690.00

MD: 9780.00 INC: 86.80 AZ: 3.809,780.00

MD: 9870.00 INC: 89.10 AZ: 3.109,870.00

MD: 9960.00 INC: 90.50 AZ: 7.009.960.00

MD: 10050.00 INC: 90.30 AZ: 5.200.050.00

MD: 10140.00 INC: 91.50 AZ: 2.901.140.00

MD: 10230.00 INC: 90.50 AZ: 3.00 230.00

MD: 10320.00 INC: 91.50 AZ: 2.90 320.00

MD: 10410.00 INC: 91.30 AZ: 1.90 410.00

MD: 10500.00 INC: 89.70 AZ: 1.90 500.00

MD: 10590.00 INC: 89.10 AZ: 0.70590.00

MD: 10680.00 INC: 89.20 AZ: 0.70680.00

MD: 10770.00 INC: 90.40 AZ: 2.80770.00

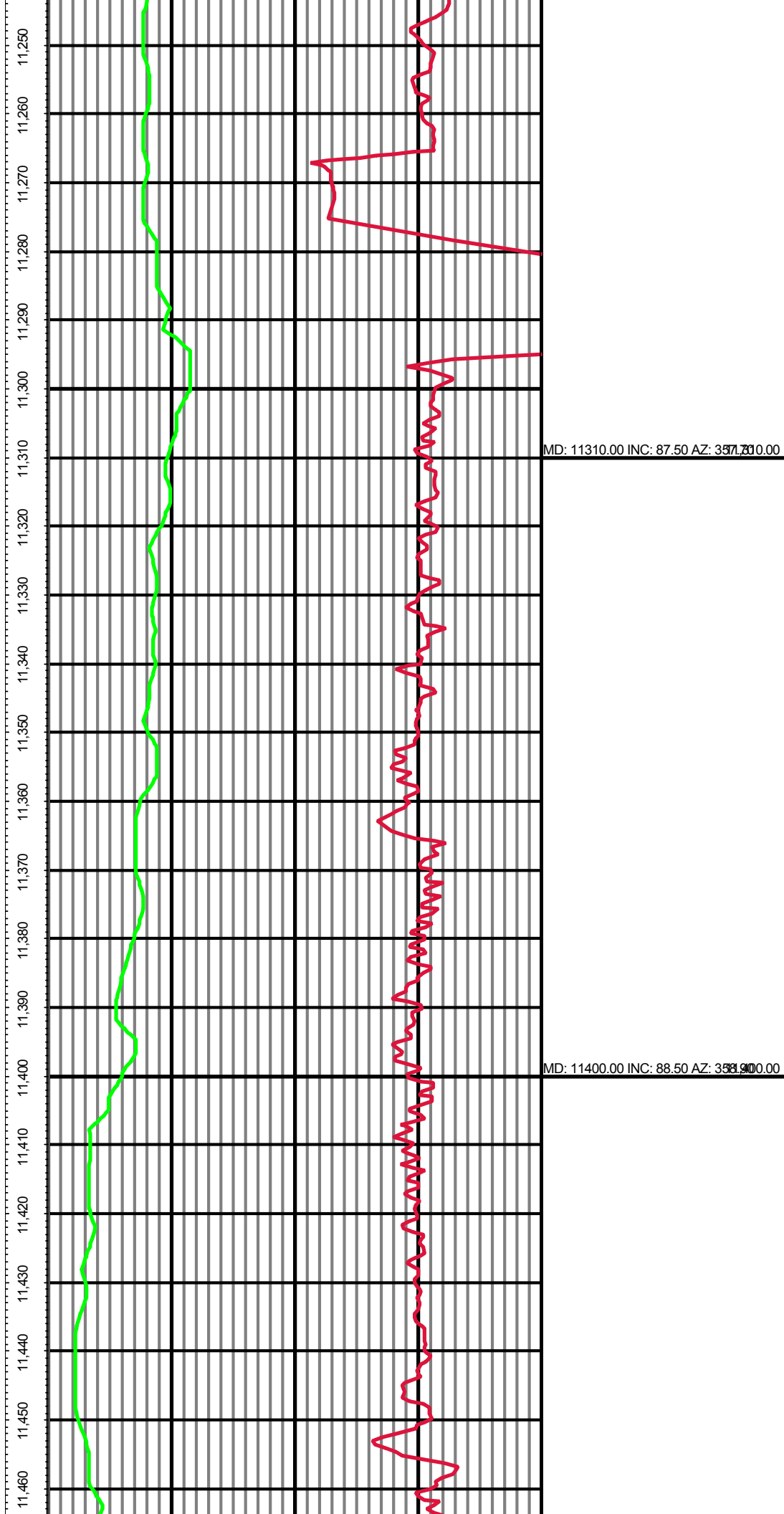
MD: 10860.00 INC: 90.40 AZ: 1.30 10860.00

MD: 10950.00 INC: 90.60 AZ: 2.50 10950.00

MD: 11040.00 INC: 90.60 AZ: 2.10 040.00

MD: 11130.00 INC: 90.70 AZ: 2.70 130.00

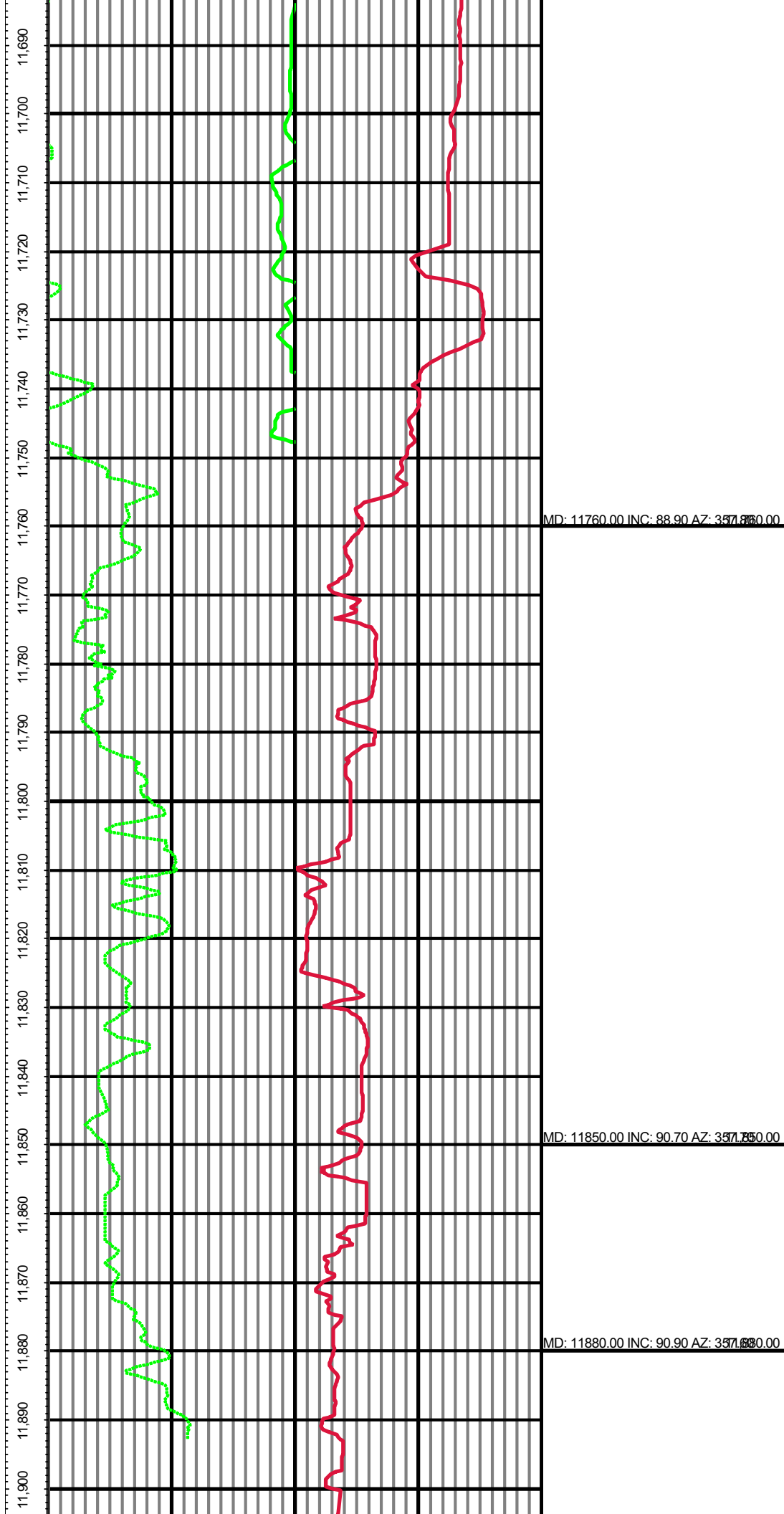
MD: 11220.00 INC: 91.20 AZ: 1.20 220.00

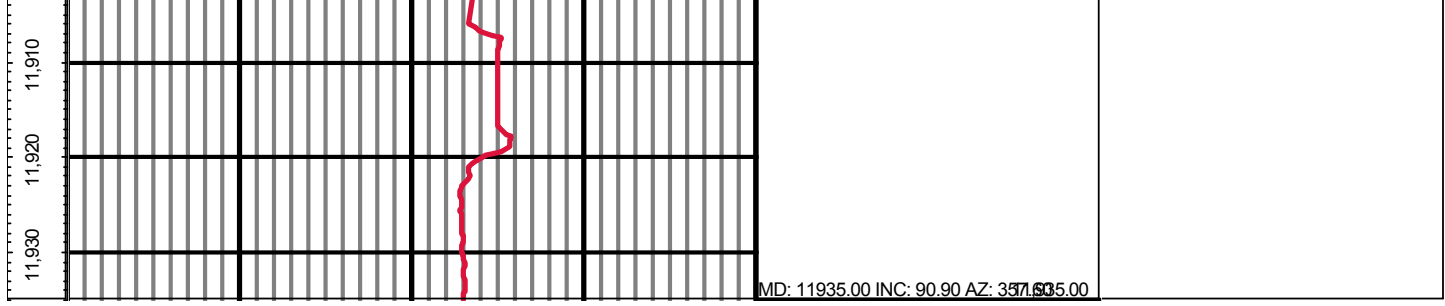


MD: 11490.00 INC: 88.40 AZ: 358.690.00

MD: 11580.00 INC: 87.80 AZ: 357.530.00

MD: 11670.00 INC: 88.90 AZ: 358.670.00





MD: 11935.00 INC: 90.90 AZ: 357.50

MD 0.00 GR(API) 150.00 0.00 ROP(FT/HR) 600.00 Surveys (MD/INC/AZ)
FT 150.00 2 300.00