

SWIFT Energy Company

PATHFINDER  
A Schlumberger Company

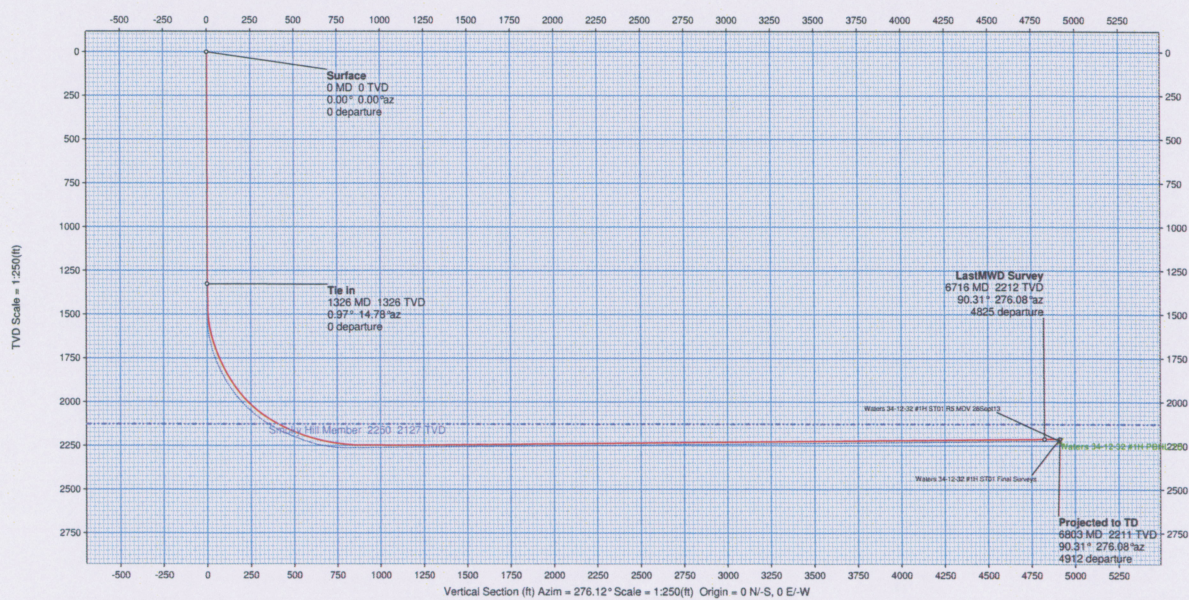
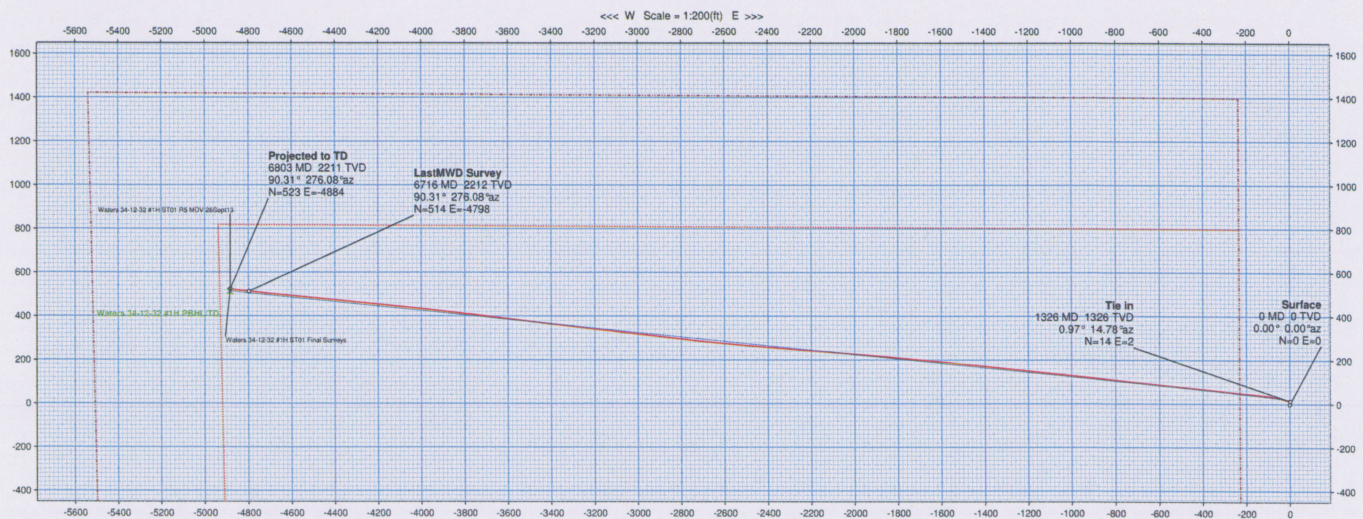
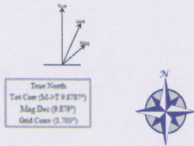
PvA

SWIFT Energy Company

Aztec 781



WELL	Waters 34-12-32 #1H		FIELD	Co Laplata County		STRUCTURE	Swift Energy Mancos Waters 34-12-32-1H	
Magnetic Parameters	Model: BGOM 2013	Dip: 63.694°	Date: October 17, 2013	Surface Location	NAD27 Universal Transverse Mercator, Zone 12 North, US Feet		Miscellaneous	
	Mag Dec: 9.87W		PS: 58814.4mT	Lat: N 37° 9' 4.975"	Northings: 13501189.89 BUS	Grid Conv: 1.703"	Shot: Waters 34-12-32 #1H	TVD Ref: KB690330 above MSL
				Lon: W 108° 10' 52.822"	Easting: 2461770.22 BUS	Scale Pace: 1.00037214	Plan: Waters 34-12-32 #1H ST01 Final Survey	October 17, 2013



Drawn By: Ed Moore  
Date Created: October 21, 2013 02:43:23 PM  
Checked By:  
Checked Date:  
Approved By:  
Approved Date: