



RADIAL CEMENT BOND LOG

GAMMA RAY

CCL

Company Kerr McGee Oil and Gas
Well P-VILLE 31-7
Field Wattenberg
County WELD State CO

Location: API # : 05-123-30770
SW/NW
1507' FNL & 1352' FWL
SEC 7 TWP 3N RGE 66W
Permanent Datum GL Elevation 4790
Log Measured From KB 15'
Drilling Measured From KB
Other Services
K.B. 4805
D.F. 4804
G.L. 4790

Company Kerr McGee Oil and Gas
Well P-VILLE 31-7
Field Wattenberg
County WELD
State CO

Permanent Datum GL Elevation 4790
Log Measured From KB 15'
Drilling Measured From KB
Other Services
K.B. 4805
D.F. 4804
G.L. 4790

Date 11-12-2013

Run Number ONE
Depth Driller 7463
Depth Logger 1224
Bottom Logged Interval 1221
Top Log Interval 100
Open Hole Size 4.5
Type Fluid WATER
Density / Viscosity 1.0
Max. Recorded Temp. 83
Estimated Cement Top 338
Time Well Ready
Time Logger on Bottom
Equipment Number 7770
Location GREELEY
Recorded By C.JONES
Witnessed By B.SMITH

Borehole Record
Run Number Bit From To Size Weight From To
ONE
TWO

Casing Record
Surface String
Prot. String
Production String
Liner

<<< Fold Here >>>

All interpretations are opinions based on inferences from electrical or other measurements and we cannot and do not guarantee the accuracy or correctness of any interpretation, and we shall not, except in the case of gross or willful negligence on our part, be liable or responsible for any loss, costs, damages, or expenses incurred or sustained by anyone resulting from any interpretation made by any of our officers, agents or employees. These interpretations are also subject to our general terms and conditions set out in our current Price Schedule.

Comments

RAN CBL TO VERIFY CEMENT.

THANK YOU FOR USING WARRIOR ENERGY!

Sensor	Offset (ft)	Schematic	Description	Len (ft)	OD (in)	Wt (lb)

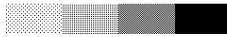

Tool Joint	Length (ft)	Weight (lb)	OD (in)	Notes
HEADVOLT	14.75			
IntTemp	13.33			
WVFS3FT	10.08			
WVFCAL	10.08			
WVFS1	10.08			
WVFS2	10.08			
WVFS3	10.08			
WVFS4	10.08			
WVFS5	10.08			
WVFS6	10.08			
WVFS7	10.08			
WVFS8	10.08			
WVFS5FT	9.08			
CNLSC	6.00			
CNSSC	5.17			
CCL	3.64			
GR	0.90			
PTS275	2.83	2.75		
RBT-Probe (Base)	8.92	2.75	90.00	Probe Radli Bond Tool with Digital Telemetry
CNT-Probe_B (275)	1.50	2.75	18.00	6 bow centralizer
GR-Probe (275)	4.33	2.75	30.00	Probe 2.75"

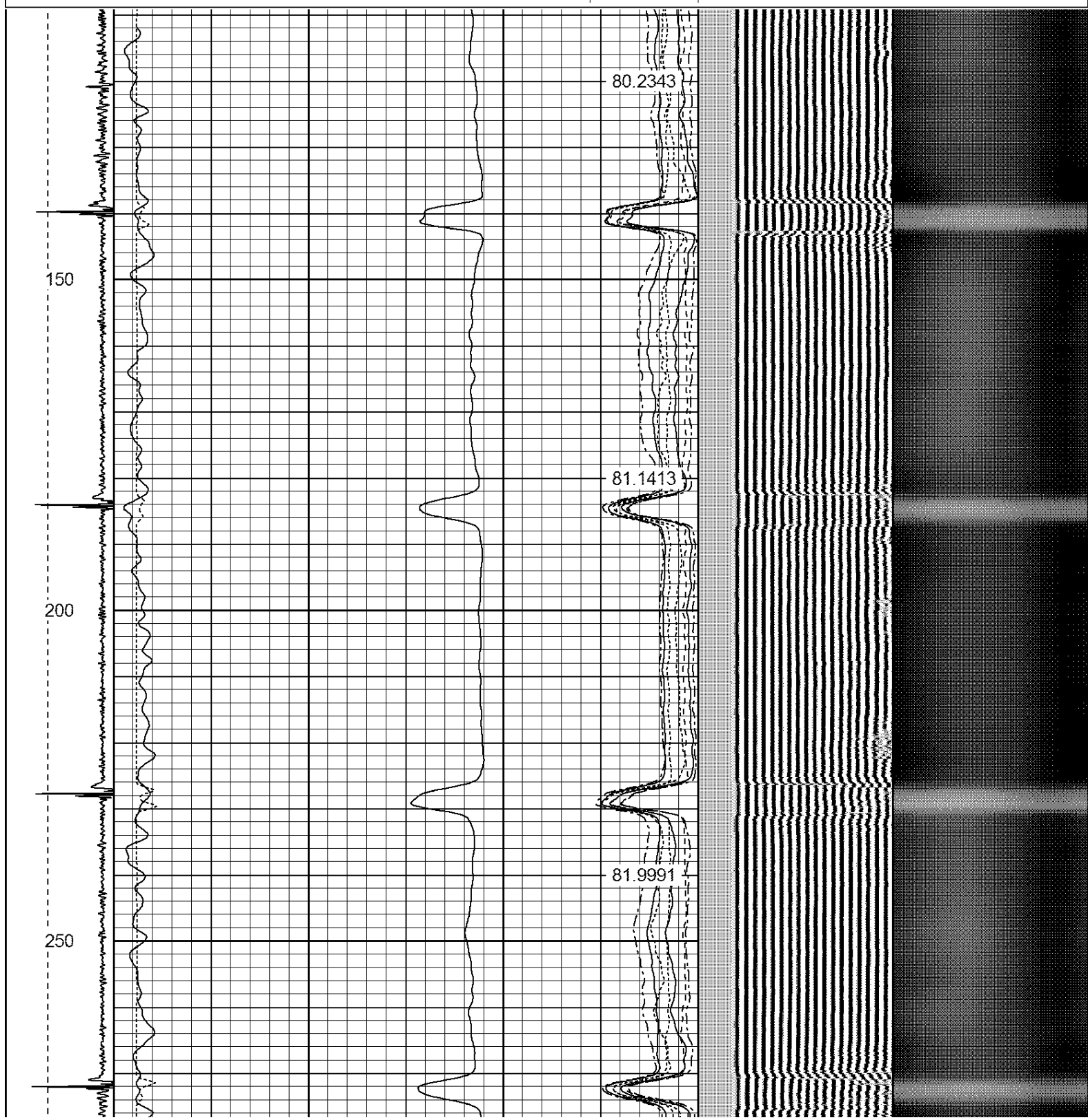
Dataset: p ville federal 5 7.db: field/well/run1/pass3

Total Length: 17.58 ft

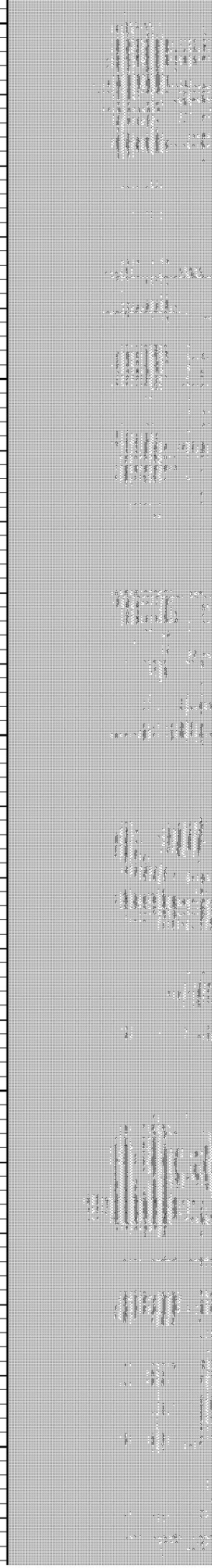
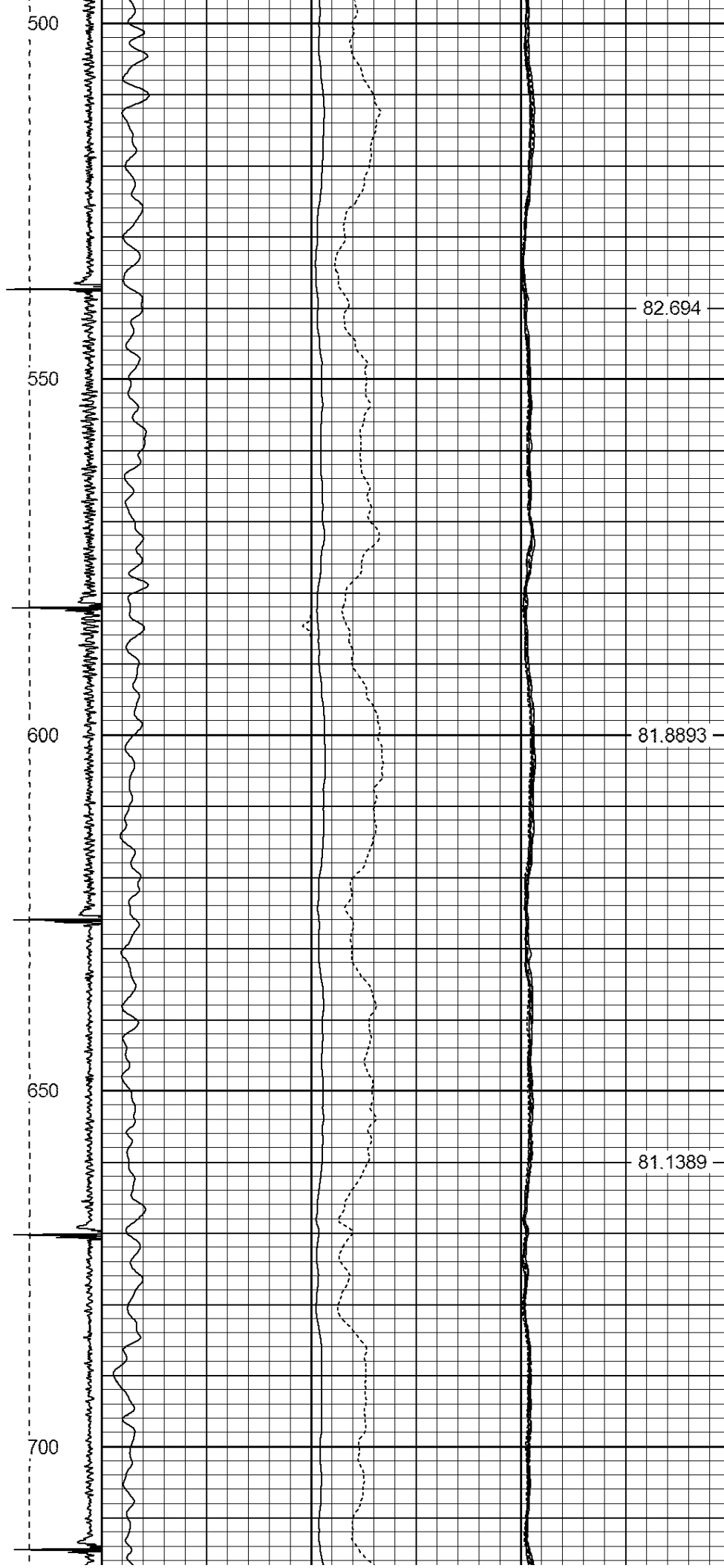
Total Weight: 138.00 lb

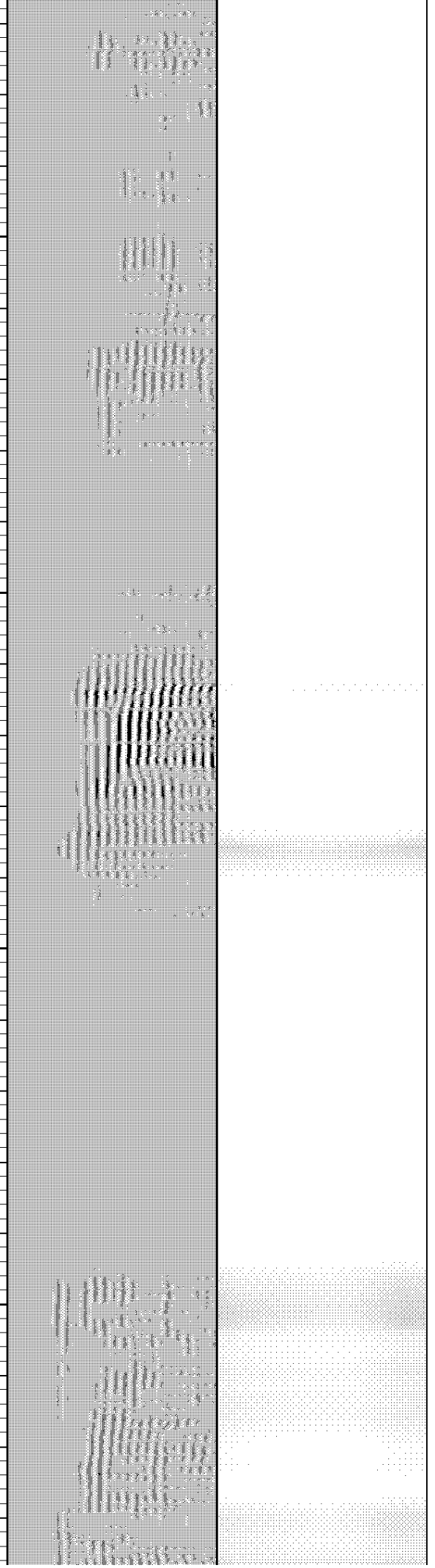
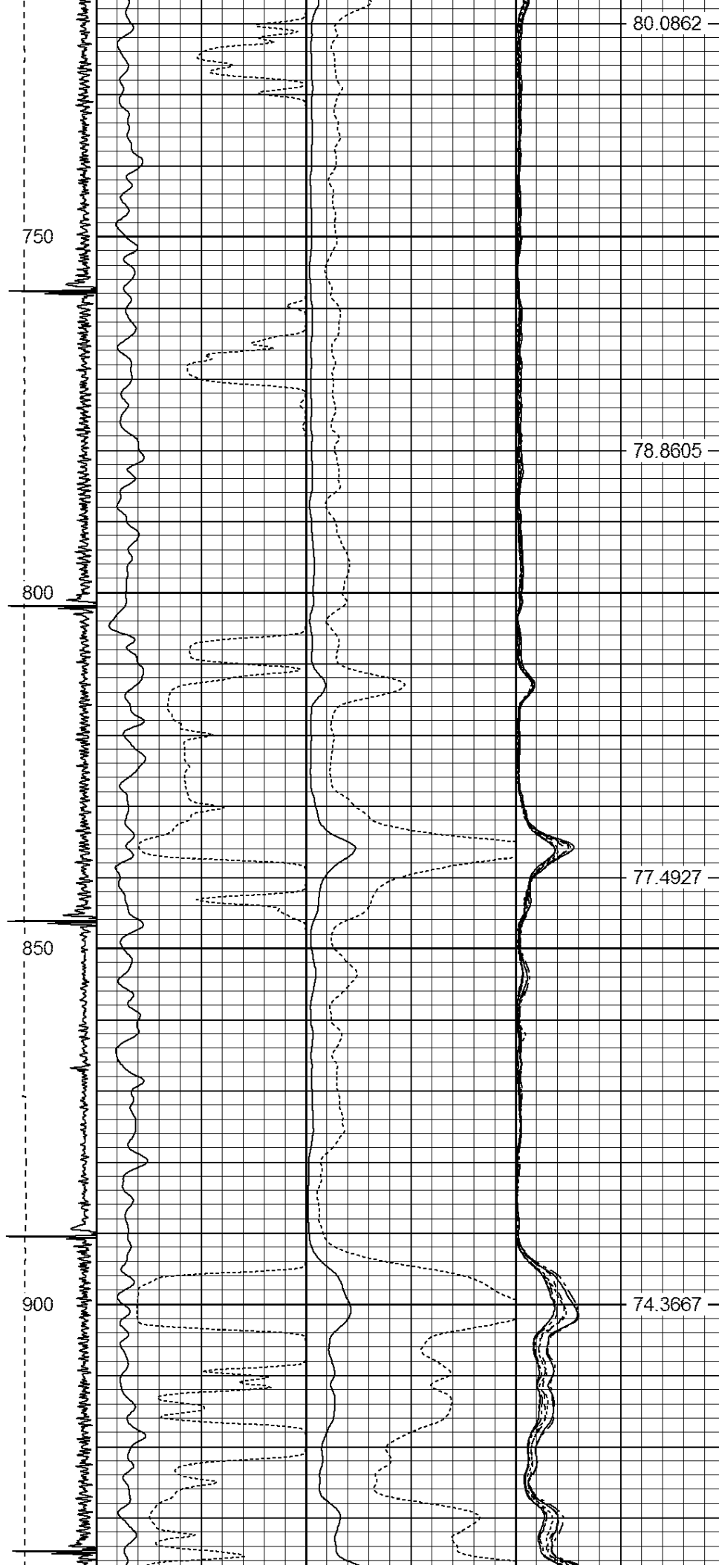
O.D. 2.75 in

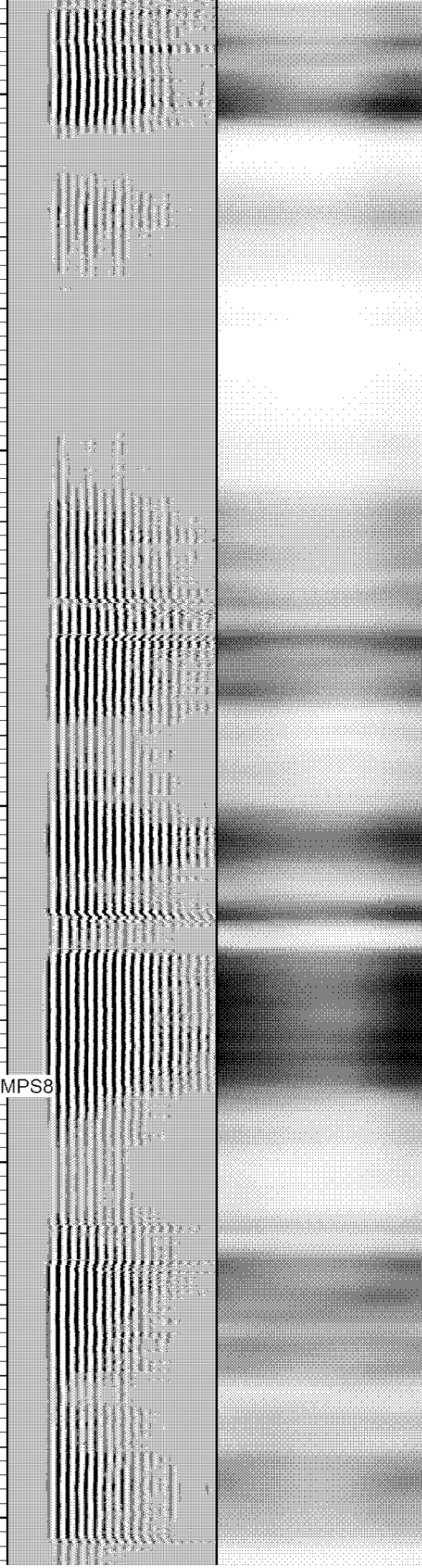
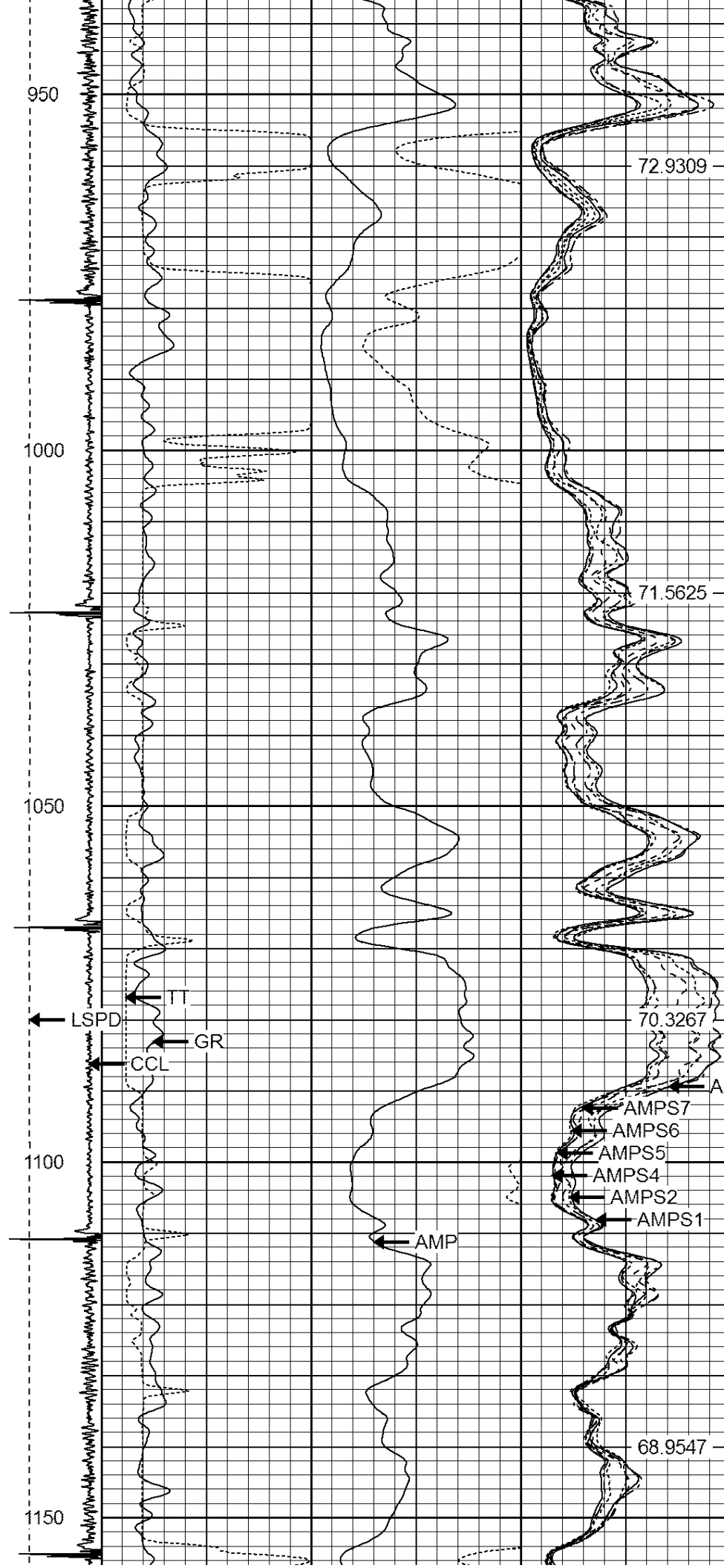
-9	CCL	1	200	TT (usec)	800	0	AMP (mV)	100	0	AMPS1	100	200	VDL	1200	1	Cement Map	8			
LSPD (ft/min)	0		0	GR (GAPI)	200	0	AMPx5 (mV)	20	0	AMPS2	100							1	100	
	200		200	GR (GAPI)	400				0	AMPS4	100									
	0								0	AMPS5	100									
									0	AMPS6	100									
									0	AMPS7	100									
250										0	AMPS8	100								
										IntTemp (degF)										

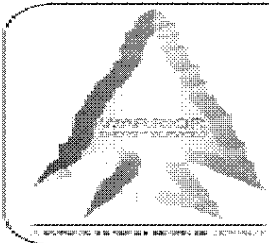
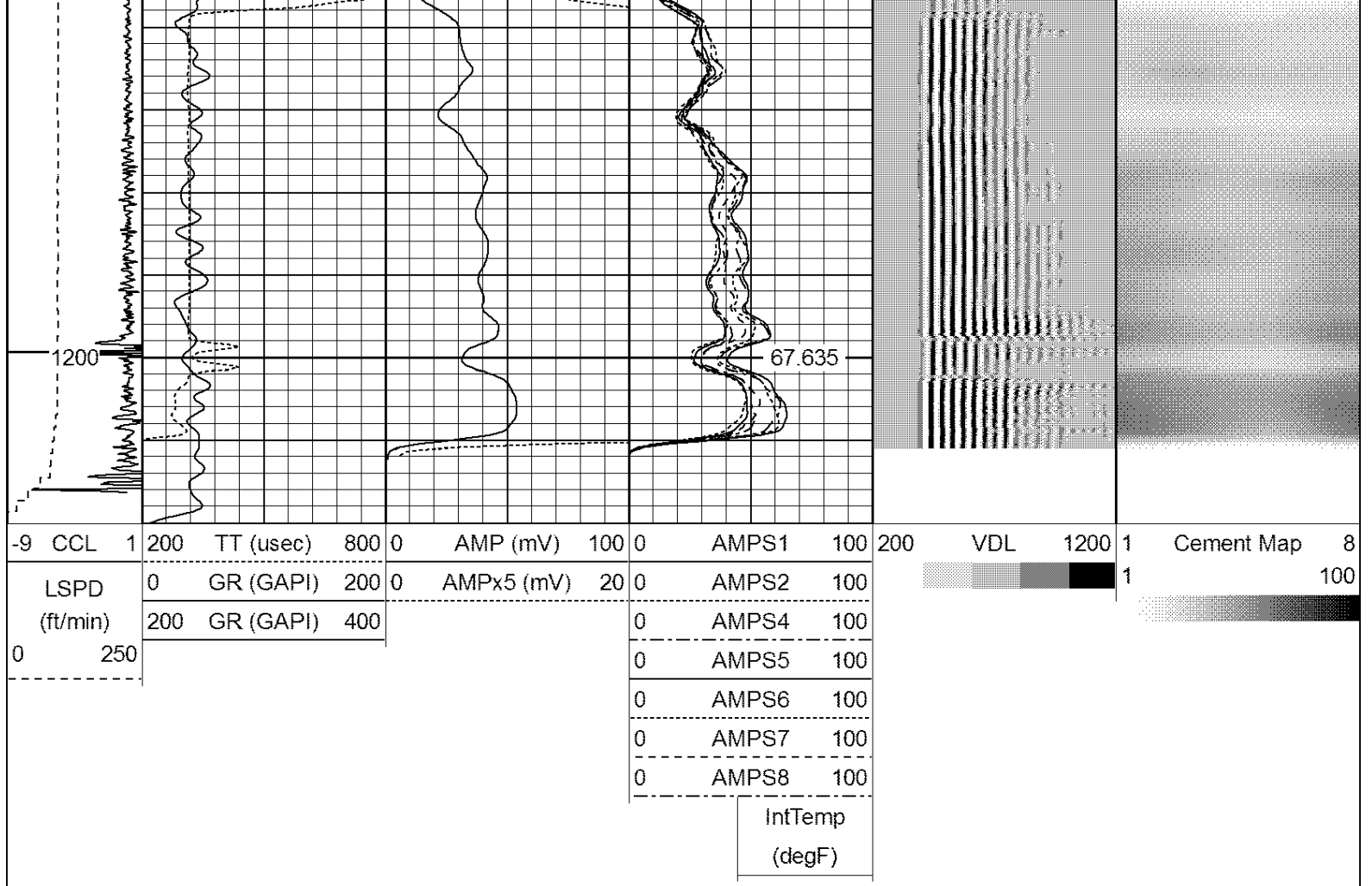












WARRIOR
ENERGY SERVICES

Company Kerr McGee Oil and Gas

Well P-Ville 31-7

Field WATTENBERG

County WELD

State CO