

OPERATOR: Dejour Energy (USA) Corp.



- FEDERAL PWD 21-6-91 NAD83

LEGEND:

- SURVEYORS STATEMENT:

ELWOOD BARRY GILES
COLORADO LS 38150


$$1'' = 1000'$$

Sheet 1F of 9

PWD 21-6-91

Well Location Plat - Federal PWD 21-6-91
SW $\frac{1}{4}$ SE $\frac{1}{4}$, Section 21, T.6S., R.91W., 6TH P.M.

Job# 2010-112,001

Date: 5/12/2011

By: BG

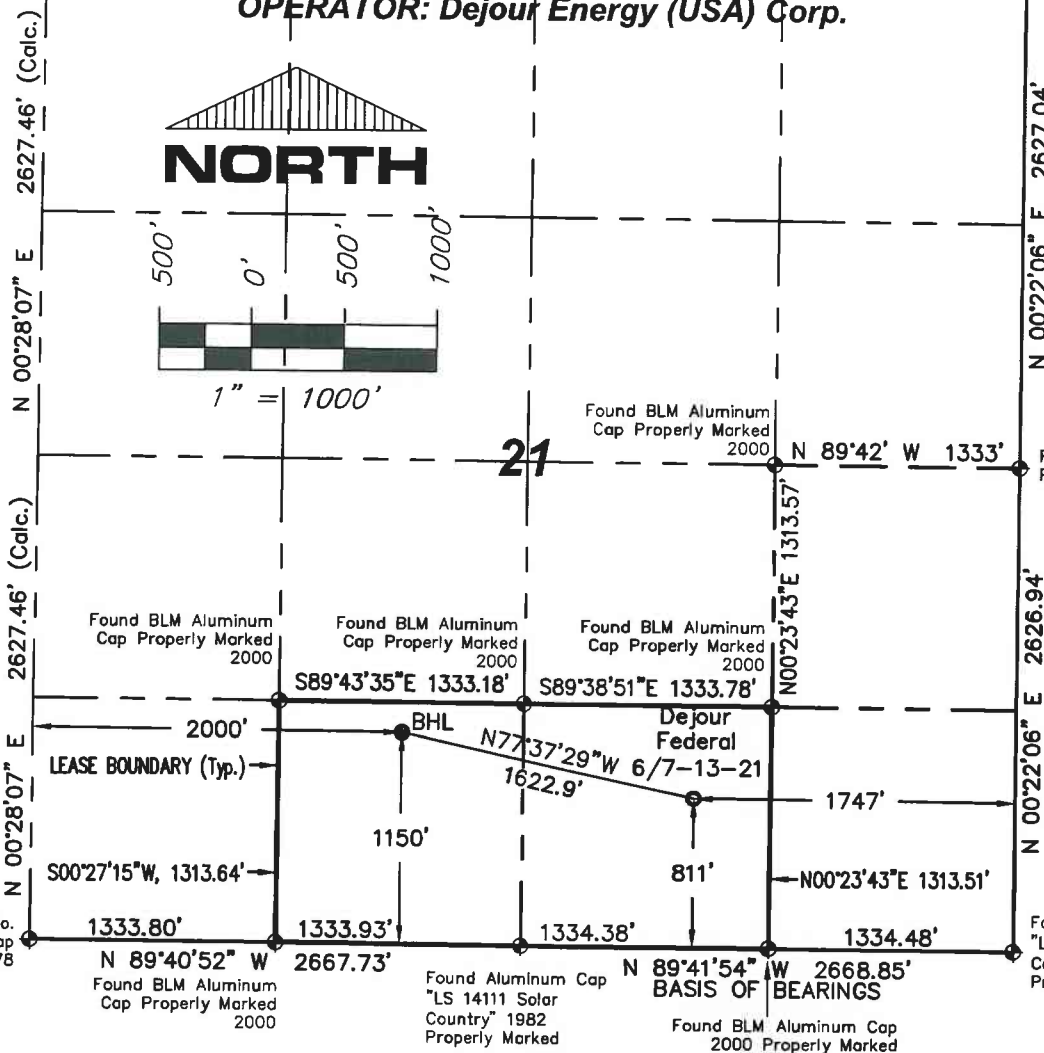
File: APD-SWSE Sec21

T. 6 S., R. 91 W., 6th P.M.

N 89°47'53" W 2662.44' (Calc.) N 89°33'42" W 2664.96' (Calc.)

Found Aluminum Cap
"LS 27925" 2008
Properly Marked

OPERATOR: Dejour Energy (USA) Corp.



NOTES:

- 1: GEODETIC POSITIONS ARE SHOWN IN DECIMAL DEGREES BASED ON NAD83.
- 2: UNITS OF MEASUREMENT: U.S. SURVEY FOOT
- 3: EXISTING GROUND ELEVATION: 7009.5'. PROPOSED PAD ELEVATION: 7008.0'. ELEVATIONS HAVE BEEN DERIVED USING GPS OBSERVATIONS, GEOID 09, NAVD 88.
- 4: ALL TOP AND BOTTOM OF HOLE LOCATIONS ARE MEASURED AT 90° ANGLES FROM SECTION LINES.
- 5: BASIS OF BEARINGS: N 89°41'54" W BETWEEN FOUND MONUMENT AS SHOWN HEREON.
- 6: SEE SHEET 1E FOR EXISTING IMPROVEMENTS LOCATED IN THE VICINITY OF PROPOSED WELL.
- 7: SURFACE USE: RANGELAND
- 8: USGS QUAD MAP: NEW CASTLE
- 9: GPS OPERATOR: KYLE TESKY OBSERVED AN AVERAGE PDOP OF ≤ 3.0 FOR ALL SURVEY MEASUREMENTS DEPICTED ON THIS AN SUBSEQUENT SHEETS. ALL GPS OBSERVATIONS ARE IN COMPLIANCE WITH COGCC RULE NO. 215

FEDERAL 6/7-13-21 NAD83	
SURFACE HOLE LOCATION	SECTION LINE TIES
LATITUDE = 39.508596°N	FEL = 1747'
LONGITUDE = 107.555941°W	FSL = 811'
BOTTOM HOLE LOCATION	
LATITUDE = 39.509451°N	FWL = 2000'
LONGITUDE = 107.561583°W	FSL = 1150'

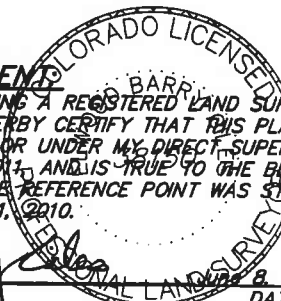
LEGEND:

- ◆ - FOUND MONUMENT AS DESCRIBED HEREON
- - SURFACE HOLE LOCATION (SHL)
- ⊗ - BOTTOM HOLE LOCATION (BHL)

SURVEYORS STATEMENT

I, ELWOOD BARRY GILES, BEING A REGISTERED LAND SURVEYOR IN THE STATE OF COLORADO, DO HEREBY CERTIFY THAT THIS PLAT REPRESENTS A SURVEY PERFORMED BY ME OR UNDER MY DIRECT SUPERVISION BETWEEN APRIL, 2010 & JANUARY, 2011, AND IS TRUE TO THE BEST OF MY KNOWLEDGE AND BELIEF. THE REFERENCE POINT WAS STAKED IN THE FIELD AS SHOWN HEREON APRIL 21, 2010.

Elwood Barry Giles
ELWOOD BARRY GILES
COLORADO LS 38150



Rev. 8/8/11 Update Cert.

SGM INC.
118 W. 6th Street, Suite 200
Glenwood Springs, Co. 81601
(970)945-1004 www.SGM-Inc.com
320 Third St. Meeker, Co. 81641

1" = 1000'
Sheet 1A of 9
Federal 6/7-13-21

Well Location Plat - Federal 6/7-13-21
SE 1/4 SW 1/4, Section 21, T.6S., R.91W., 6TH P.M.

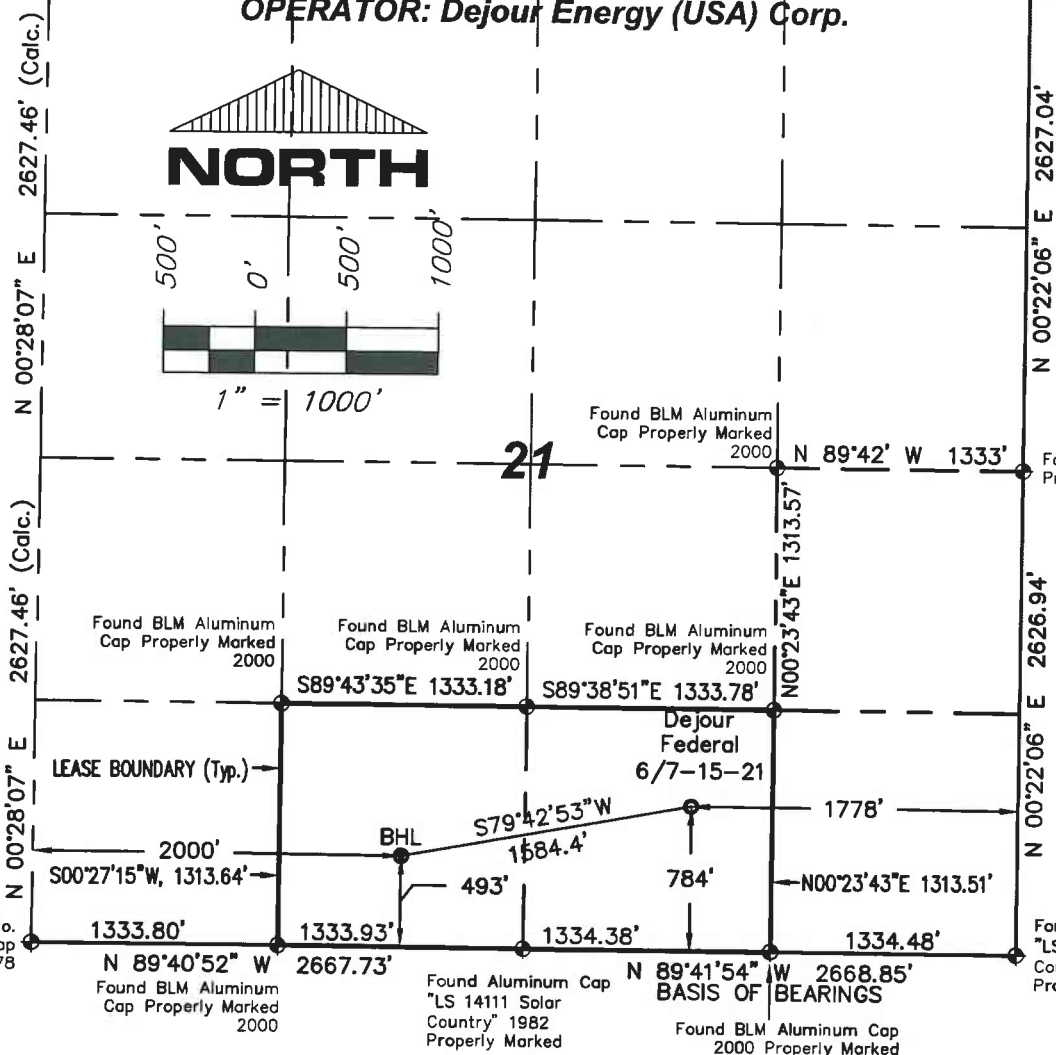
Job# 2010-112.001 Date: 6/8/2011 By: BG File: APD-SWSE_Sec21

T. 6 S., R. 91 W., 6th P.M.

N 89°47'53" W 2662.44' (Calc.) N 89°33'42" W 2664.96' (Calc.)

Found Aluminum Cap
"LS 27925" 2008
Properly Marked

OPERATOR: Dejour Energy (USA) Corp.



NOTES:

- 1: GEODETIC POSITIONS ARE SHOWN IN DECIMAL DEGREES BASED ON NAD83.
- 2: UNITS OF MEASUREMENT: U.S. SURVEY FOOT
- 3: EXISTING GROUND ELEVATION: 7009.5'. PROPOSED PAD ELEVATION: 7008.0'. ELEVATIONS HAVE BEEN DERIVED USING GPS OBSERVATIONS, GEOID 09, NAVD 88.
- 4: ALL TOP AND BOTTOM OF HOLE LOCATIONS ARE MEASURED AT 90° ANGLES FROM SECTION LINES.
- 5: BASIS OF BEARINGS: N 89°41'54" W BETWEEN FOUND MONUMENT AS SHOWN HEREON.
- 6: SEE SHEET 1E FOR EXISTING IMPROVEMENTS LOCATED IN THE VICINITY OF PROPOSED WELL.
- 7: SURFACE USE: RANGELAND
- 8: USGS QUAD MAP: NEW CASTLE
- 9: GPS OPERATOR: KYLE TESKY OBSERVED AN AVERAGE PDOP OF ≤ 3.0 FOR ALL SURVEY MEASUREMENTS DEPICTED ON THIS AN SUBSEQUENT SHEETS. ALL GPS OBSERVATIONS ARE IN COMPLIANCE WITH COGCC RULE NO. 215

LEGEND:

- ◆ - FOUND MONUMENT AS DESCRIBED HEREON
- - SURFACE HOLE LOCATION (SHL)
- ⊙ - BOTTOM HOLE LOCATION (BHL)

Rev. 8/8/11: Update Cert.

FEDERAL 6/7-15-21 NAD83

SURFACE HOLE LOCATION	SECTION LINE TIES
LATITUDE = 39.508522°N	FEL = 1778'
LONGITUDE = 107.556049°W	FSL = 784'
BOTTOM HOLE LOCATION	
LATITUDE = 39.507649°N	FWL = 2000'
LONGITUDE = 107.561548°W	FSL = 493'

SURVEYORS STATEMENT:

I, ELWOOD BARRY GILES, BEING A REGISTERED LAND SURVEYOR IN THE STATE OF COLORADO, DO HEREBY CERTIFY THAT THIS PLAT REPRESENTS A SURVEY PERFORMED BY ME OR UNDER MY DIRECT SUPERVISION BETWEEN APRIL, 2010 & JANUARY, 2011, AND IS TRUE TO THE BEST OF MY KNOWLEDGE AND BELIEF. THE REFERENCE POINT WAS STAKED IN THE FIELD AS SHOWN HEREON APRIL 27, 2010.

Elwood Barry Giles
ELWOOD BARRY GILES
COLORADO LS 38150

June 8, 2011
DATE



SGM INC.
118 W. 6th Street, Suite 200
Glenwood Springs, Co. 81601
(970)945-1004 www.SGM-Inc.com
320 Third St. Meeker, Co. 81641

1" = 1000'

Sheet 1B of 9

Federal 6/7-15-21

Well Location Plat - Federal 6/7-15-21
SE1/4SW1/4, Section 21, T.6S., R.91W., 6TH P.M.

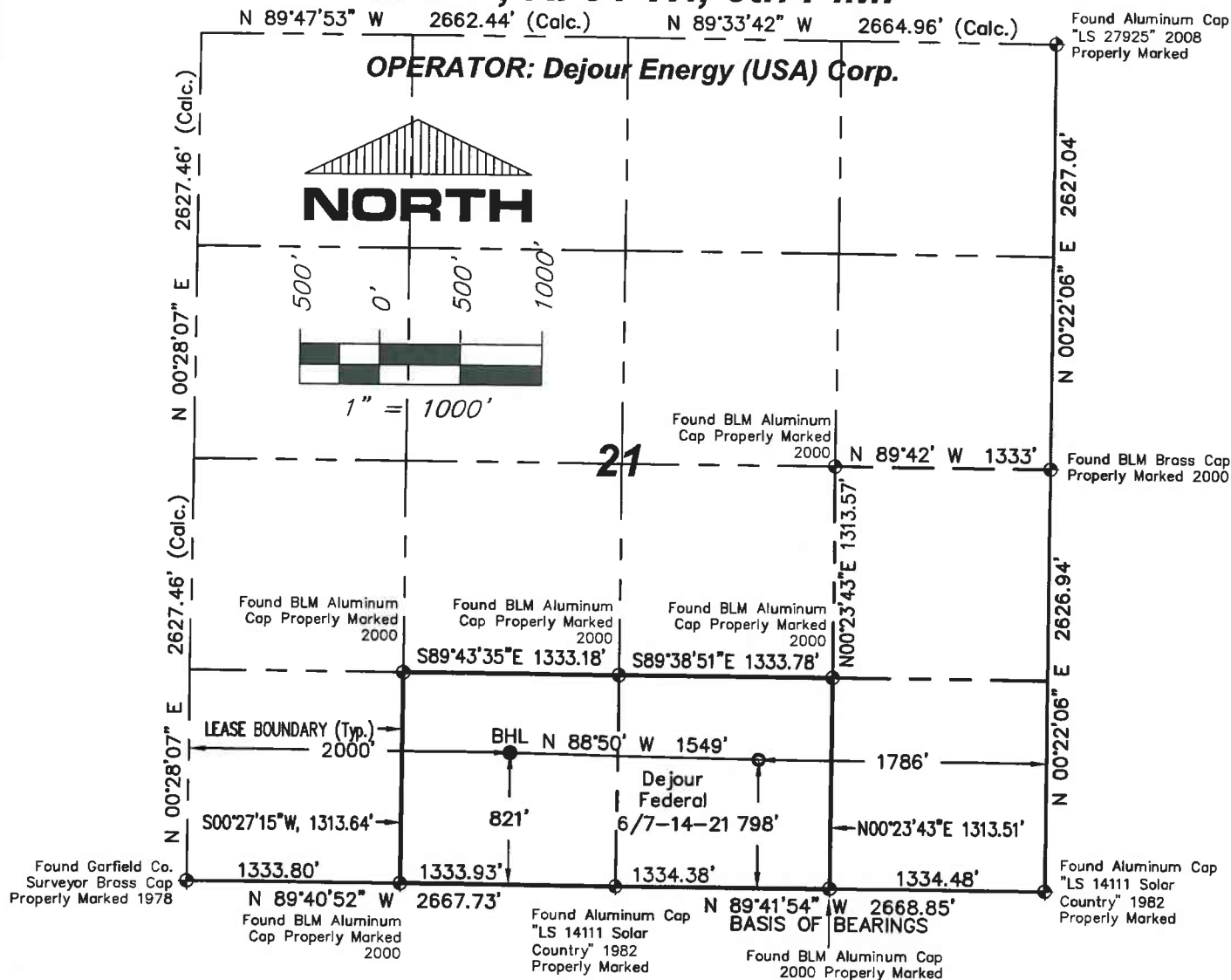
Job# 2010-112.001

Date: 6/8/2011

By: BG

File: APD-SWSE_Sec21

T. 6 S., R. 91 W., 6th P.M.



NOTES:

- 1: GEODETIC POSITIONS ARE SHOWN IN DECIMAL DEGREES BASED ON NAD83.
- 2: UNITS OF MEASUREMENT: U.S. SURVEY FOOT
- 3: EXISTING GROUND ELEVATION: 7009.5'. PROPOSED PAD ELEVATION: 7008.0'. ELEVATIONS HAVE BEEN DERIVED USING GPS OBSERVATIONS, GEOID 09, NAVD 88.
- 4: ALL TOP AND BOTTOM OF HOLE LOCATIONS ARE MEASURED AT 90° ANGLES FROM SECTION LINES.
- 5: BASIS OF BEARINGS: N 89°41'54" W BETWEEN FOUND MONUMENT AS SHOWN HEREON.
- 6: SEE SHEET 1E FOR EXISTING IMPROVEMENTS LOCATED IN THE VICINITY OF PROPOSED WELL.
- 7: SURFACE USE: RANGELAND
- 8: USGS QUAD MAP: NEW CASTLE
- 9: GPS OPERATOR: KYLE TESKY OBSERVED AN AVERAGE PDOP OF ≤ 3.0 FOR ALL SURVEY MEASUREMENTS DEPICTED ON THIS AN SUBSEQUENT SHEETS. ALL GPS OBSERVATIONS ARE IN COMPLIANCE WITH COGCC RULE NO. 215

LEGEND:

- ⬢ - FOUND MONUMENT AS DESCRIBED HEREON
- - SURFACE HOLE LOCATION (SHL)
- ⊙ - BOTTOM HOLE LOCATION (BHL)

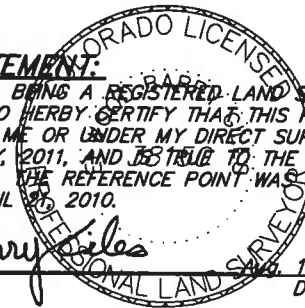
Rev. 8/8/11: Update Cert. and Title
Rev. 8/19/11: Move SHL & update table

SURVEYORS STATEMENT:

I, ELWOOD BARRY GILES, BEING A REGISTERED LAND SURVEYOR IN THE STATE OF COLORADO, DO HEREBY CERTIFY THAT THIS PLAT REPRESENTS A SURVEY PERFORMED BY ME OR UNDER MY DIRECT SUPERVISION BETWEEN APRIL, 2010 & JANUARY, 2011, AND IS TRUE TO THE BEST OF MY KNOWLEDGE AND BELIEF. THE REFERENCE POINT WAS TAKEN IN THE FIELD AS SHOWN HEREON APRIL 28, 2010.

Elwood Barry Giles

ELWOOD BARRY GILES
COLORADO LS 38150



APR 19, 2011
DATE



SGM INC.
118 W. 6th Street, Suite 200
Glenwood Springs, Co. 81601
(970)945-1004 www.SGM-Inc.com
320 Third St. Meeker, Co. 81641

1" = 1000'

Sheet 1C of 9

Federal 6/7-14-21

Well Location Plat - Federal 6/7-14-21
SE 1/4 SW 1/4, Section 21, T.6S., R.91W., 6TH P.M.

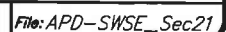
Job# 2010-112.001

Date: 6/8/2011

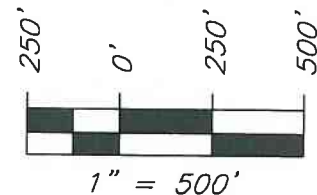
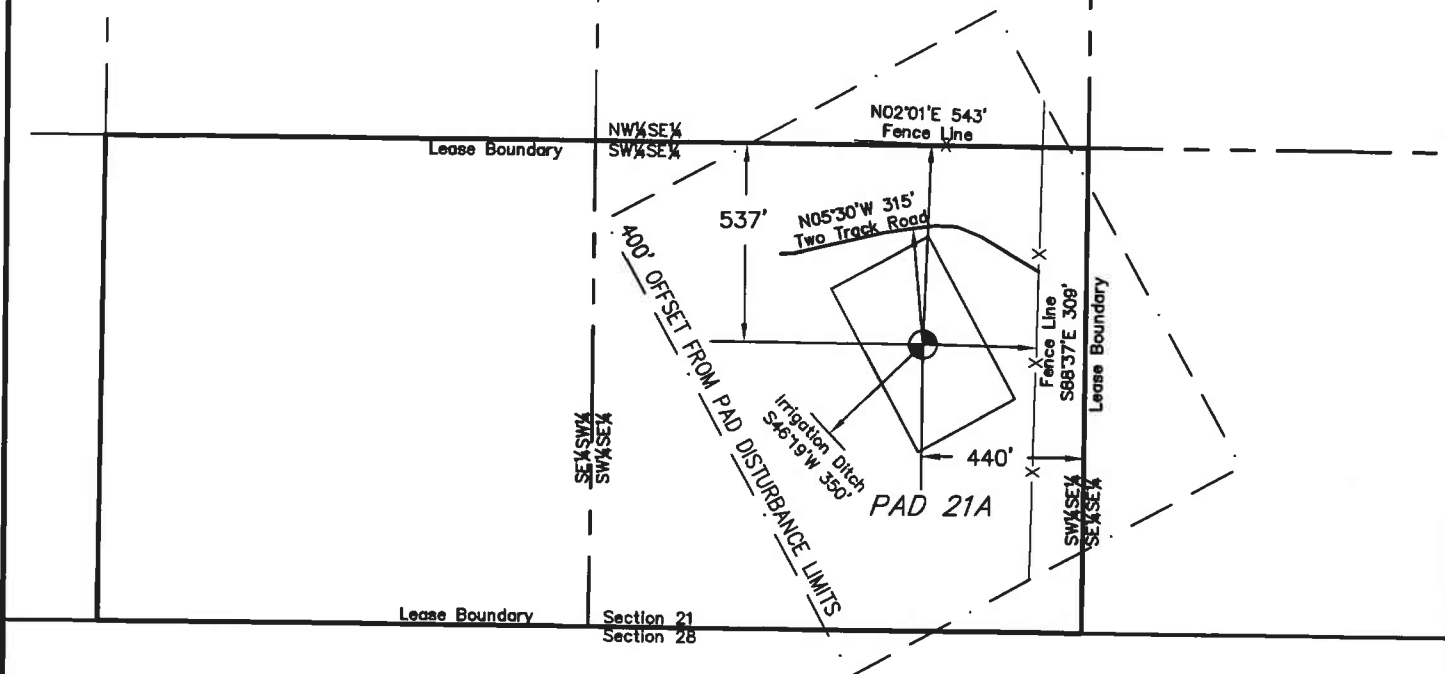
By: BG


File: APD-SWSE_Sec21

OPERATOR: Dejour Energy (USA) Corp.



T. 6 S., R. 91 W., 6th P.M.



Dejour Energy (USA) Corp.
Proposed Pad 21-A
Reference Point = 
Center of Pad Stake
Lat.: 39.508501°N
Long.: 107.556036°W
NAD83

SURVEYORS STATEMENT:

I, ELWOOD BARRY GILES, BEING A REGISTERED LAND SURVEYOR IN THE STATE OF COLORADO, DO HEREBY CERTIFY THAT THIS PLAT REPRESENTS A SURVEY PERFORMED BY ME OR UNDER MY DIRECT SUPERVISION BETWEEN APRIL, 2010 & JANUARY, 2011, AND IS TRUE TO THE BEST OF MY KNOWLEDGE AND BELIEF. THE REFERENCE POINT WAS STAKED IN THE FIELD AS SHOWN HEREON APRIL 21, 2010.

Elwood Barry Giles

ELWOOD BARRY GILES
 COLORADO LS 38150

JULY 19, 2011
 DATE

Revised 7/19/11: Update cert to Reference Point staking



SGM INC.
 118 W. 6th Street, Suite 200
 Glenwood Springs, Co. 81601
 (970)945-1004 www.SGM-Inc.com
 320 Third St. Meeker, Co. 81641

1" = 500'
 Sheet 1E of 9
 Dejour Pad 21-A

Addendum to Well Location Plat for Dejour Energy (USA) Corp. Pad 21-A
 SW¼, SE¼ T.6S, R.91W, 6th P.M., Garfield Co., Colorado

Job# 2010-112.001 Date: 6/8/2011 By: BG File: APD-SWSE_Sec21

Notes:

1. Contact utility line locators before digging. CALL 811

2. Earth work quantities are estimated and should be used at contractors own discretion.

3. Earth work is based on the removal of 6 inches of topsoil on all disturbed areas

4. ROAD SURFACES TO BE FINISHED WITH 6 INCHES OF CLASS 6 ROAD BASE. AFTER INSTALLATION OF PIPELINE

DISTURBED AREA = 4.42 ACRES

CUT SLOPES: 2:1

FILL SLOPES: 2:1

PAD QUANTITIES:

TOTAL CUT = 13288 CUBIC YARDS

TOTAL FILL = 13214 CUBIC YARDS

SPOIL = 74 BANK CUBIC YARDS

SPOIL DOES NOT INCLUDE TOP SOIL

ROAD QUANTITIES:

TOTAL CUT: 1550 CUBIC YARDS

TOTAL FILL: 1100 CUBIC YARDS

SPOIL = 450 BANK CUBIC YARDS

TOP SOIL QUANTITY FOR PAD AND

ROAD BASED ON 6 INCH DEPTH:

4204 CUBIC YARDS

CUTTINGS PIT

Capacity with 2'

freeboard = 2843 Bbls

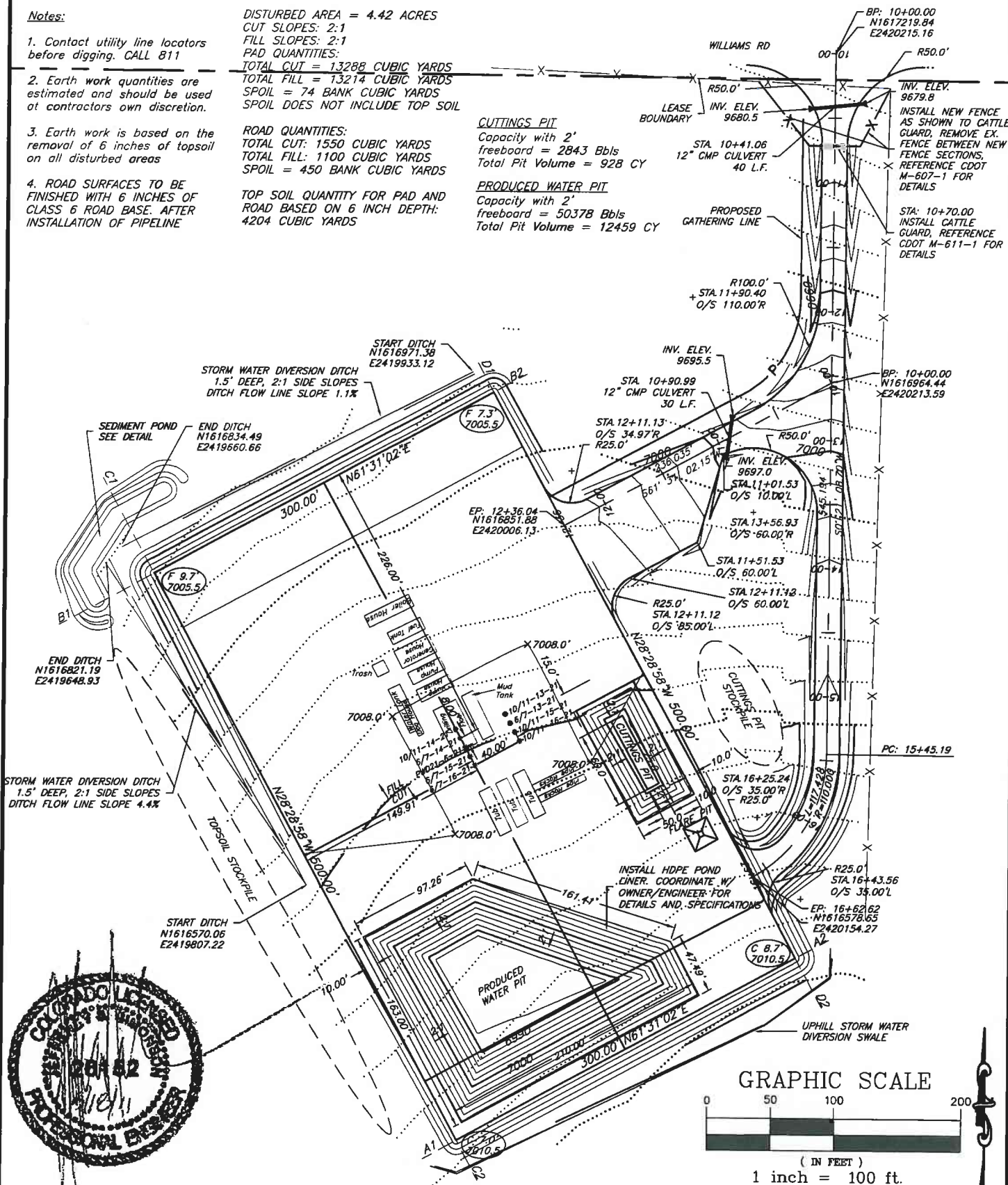
Total Pit Volume = 928 CY

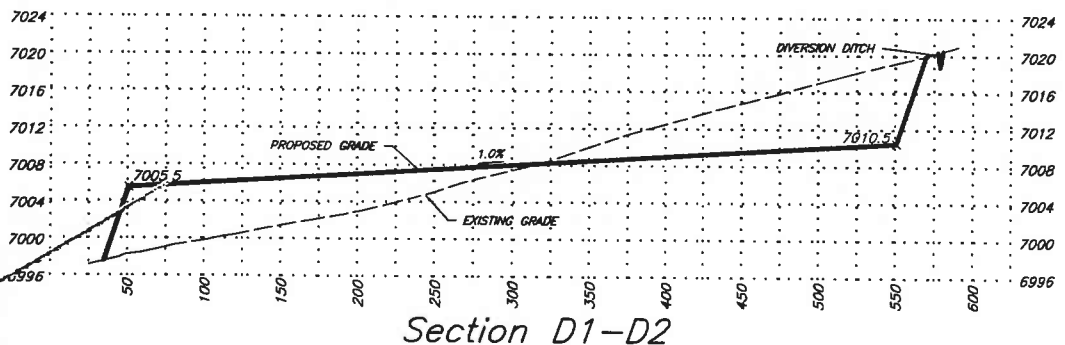
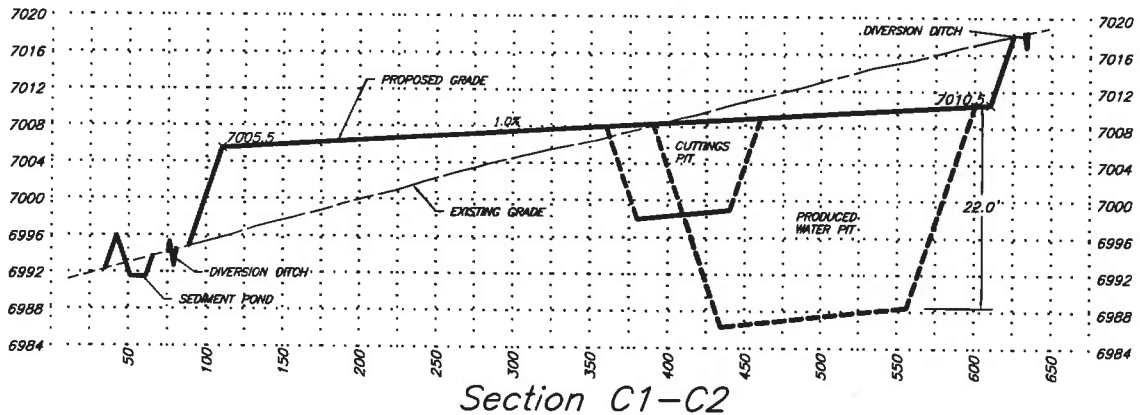
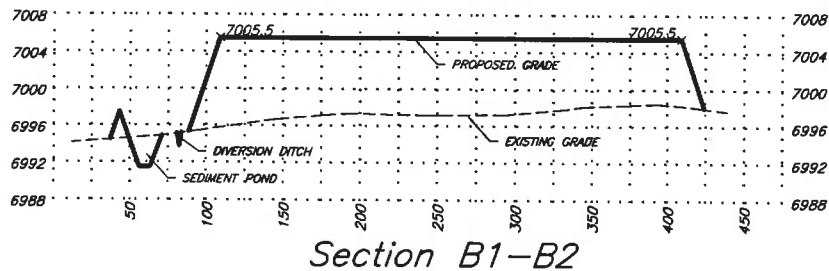
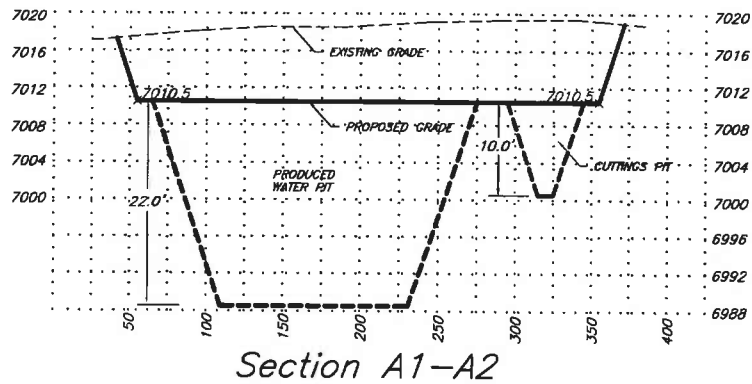
PRODUCED WATER PIT

Capacity with 2'

freeboard = 50378 Bbls

Total Pit Volume = 12459 CY





SCALE: 1"=120' HORZ
1"=20' VERT



SGM INC.
118 W. 6th Street, Suite 200
Glenwood Springs, Colorado 81601
(970) 945-1004 (FAX 945-5948)
Aspen, Colorado (970) 925-6727

Scale: 1" = 100'

Sheet 2B of 9

Pad 21A

Pad Cross-Sections

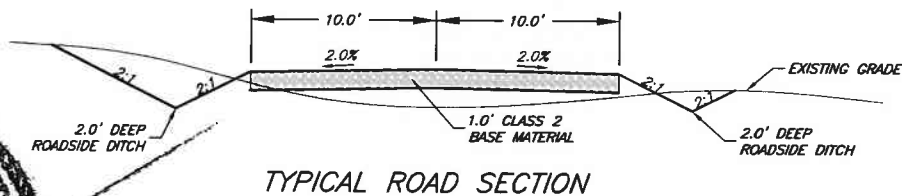
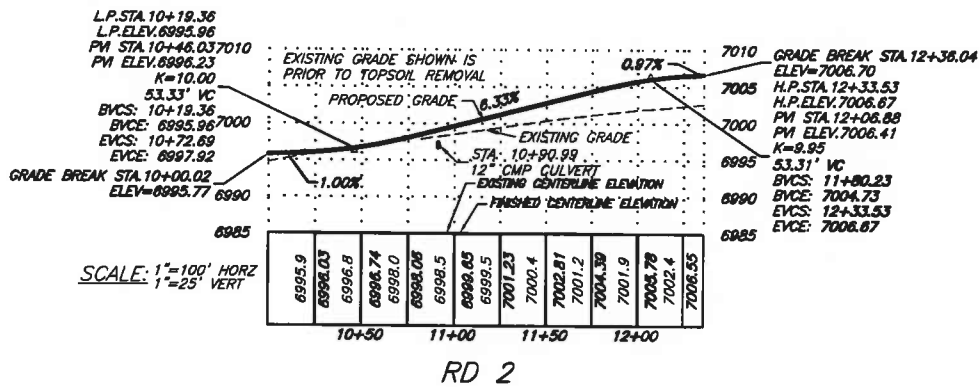
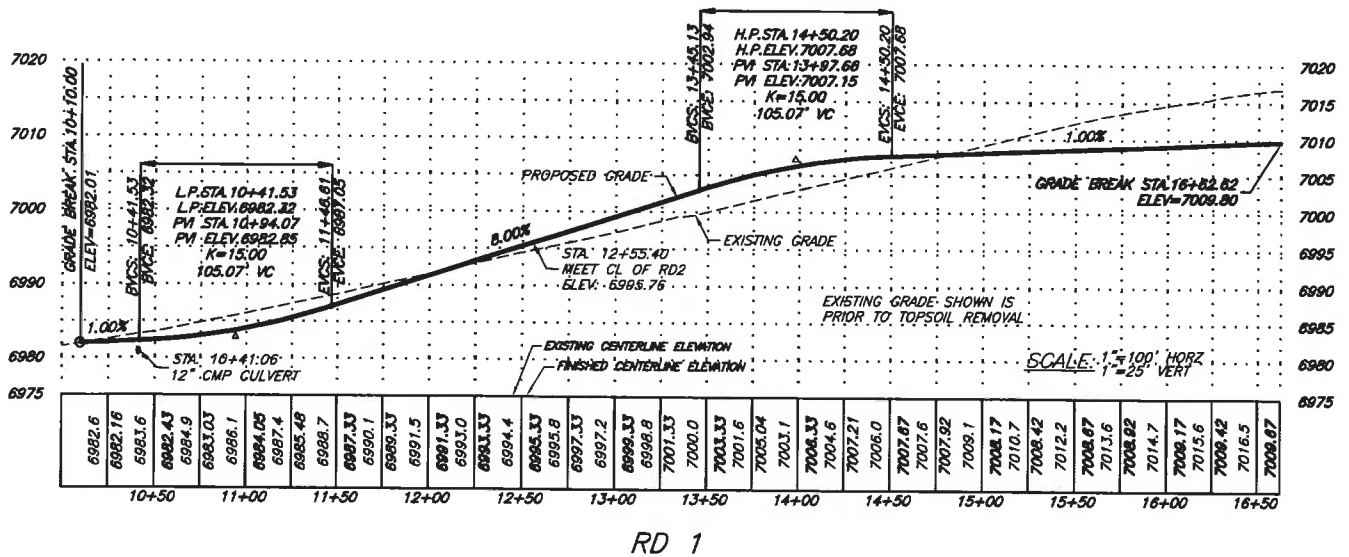
SW1/4SE1/4, Section 21, T.6S., R.9W., 6TH P.M.

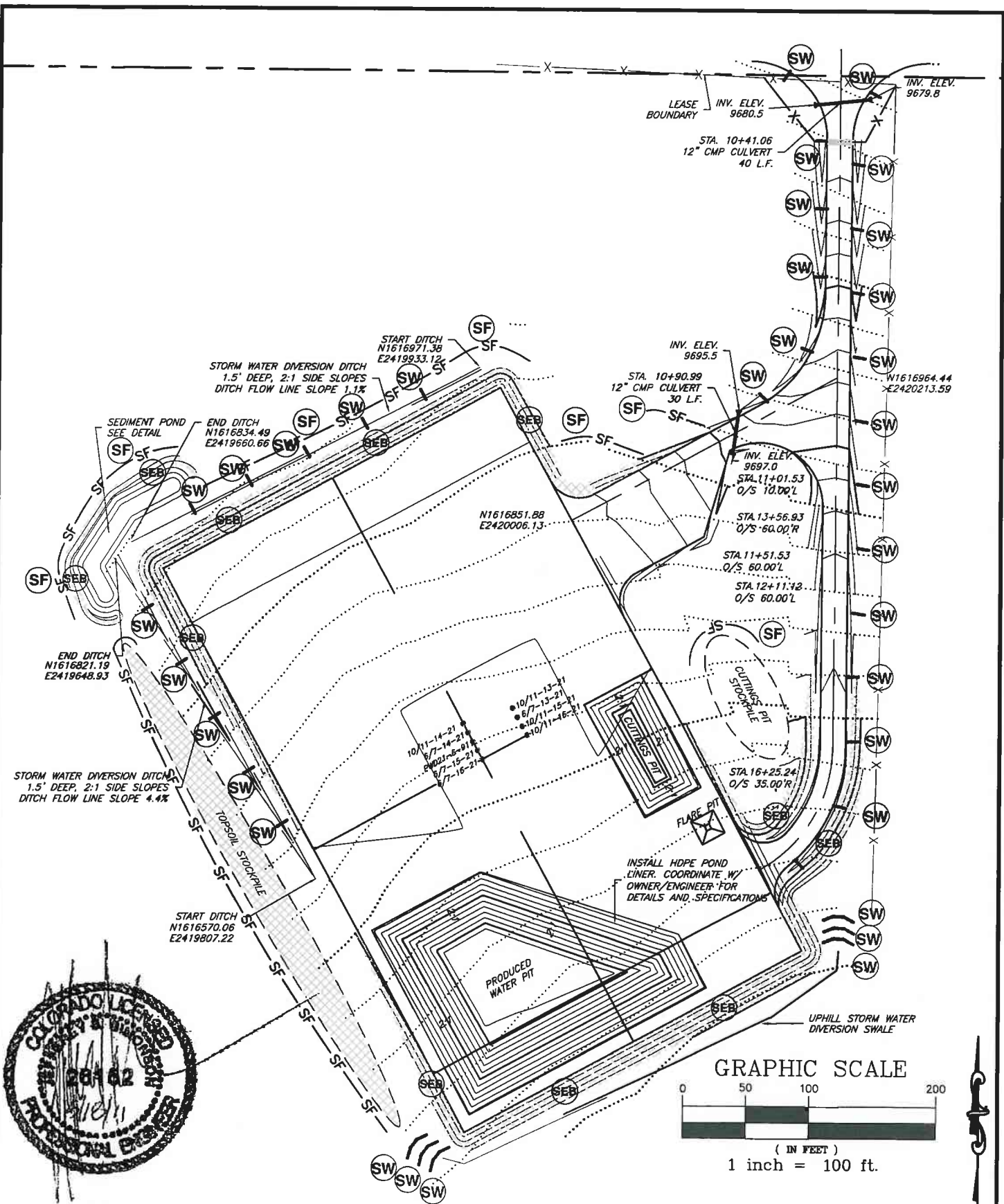
Job# 2010-112.001

Date: 9.14.11

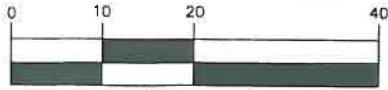
By: DCS

File: Pad 21ABM.dwg





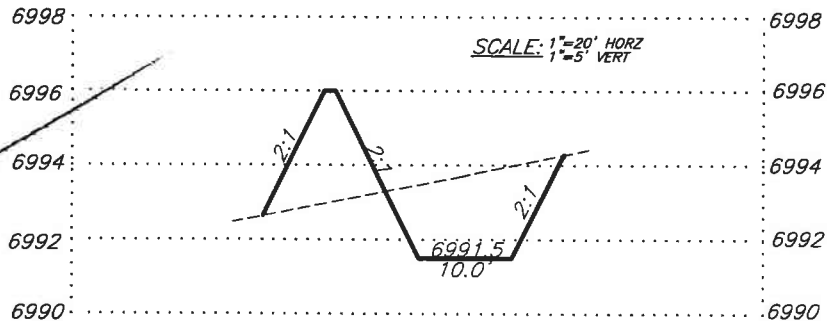
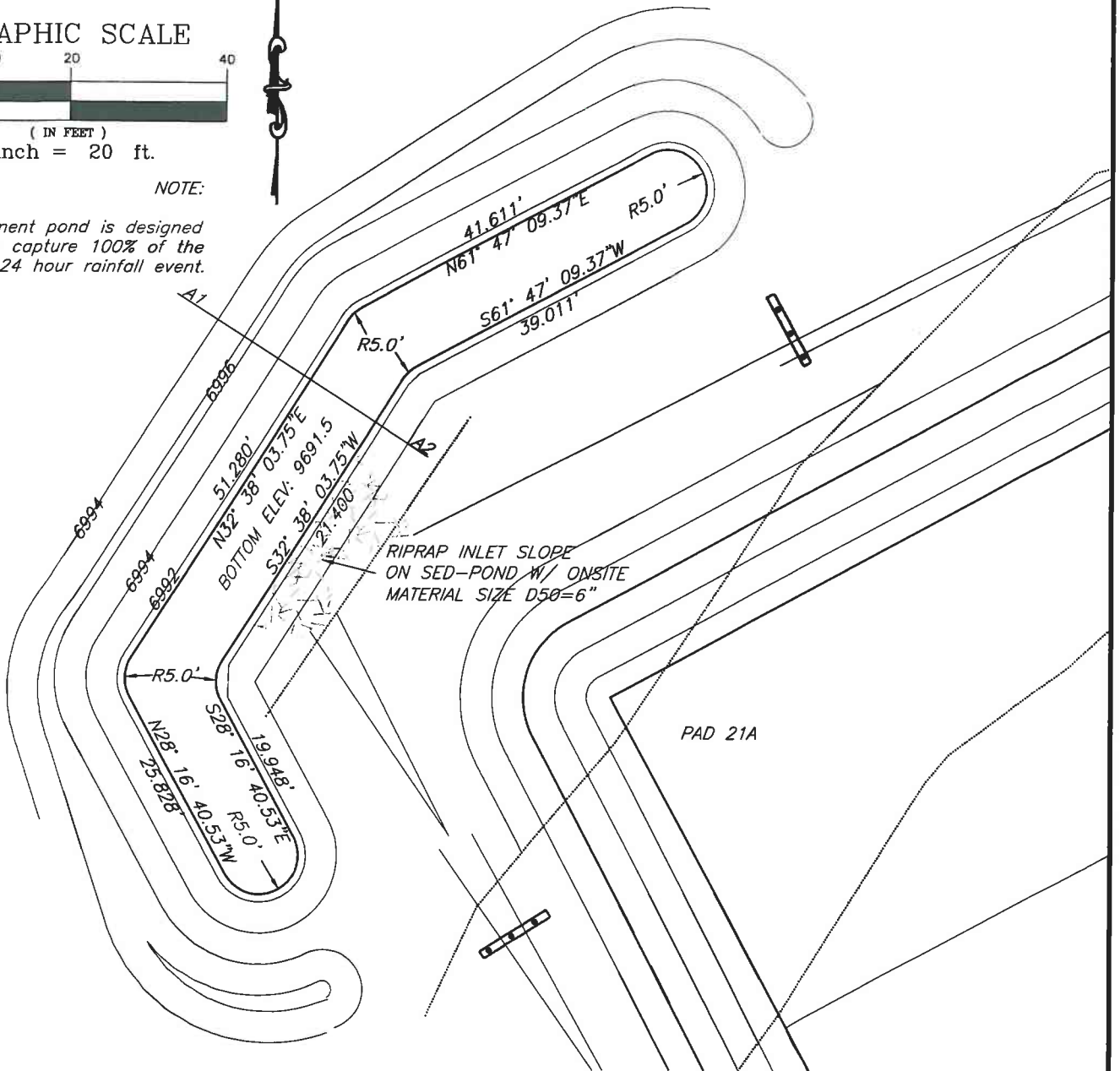
GRAPHIC SCALE



(IN FEET)
1 inch = 20 ft.

NOTE:

Sediment pond is designed to capture 100% of the 2-yr 24 hour rainfall event.



SECTION A1-A2



SGM INC.
118 W. 6th Street, Suite 200
Glenwood Springs, Colorado 81601
(970) 945-1004 (FAX 945-5948)
Aspen, Colorado (970) 925-6727

Scale: 1" = 100'

Sheet 2E of 9

Pad 21A

SEDIMENT POND PLAN AND PROFILE

SW1/4SE1/4, Section 21, T.6S., R.9W., 6TH P.M.

Job# 2010-112.001

Date: 9.14.11

By: DCS

File: Pad 21ABM.dwg

SF

— SF — SF —

SILT
FENCE

A temporary sediment barrier constructed of posts, filter fabric and, in some cases, a wire support fence, placed across or near the toe of a slope or in a minor drainage way to intercept and detain sediment and decrease flow velocities from drainage areas of limited size; applicable where sheet and rill or small concentrated flows may be a problem.

SW



STRAW
WATTLE

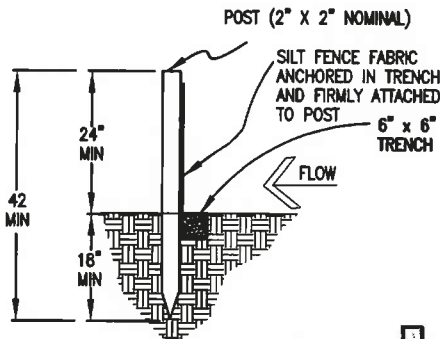
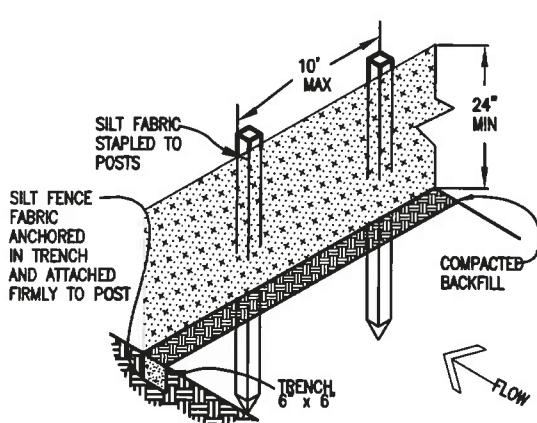
A temporary sediment barrier composed of netted straw rolls placed parallel with grade of slope to intercept and detain flow to allow sediment to settle; for low flow velocities where sheet and rill erosion potential is low. Install to manufacturer specs.

SEB

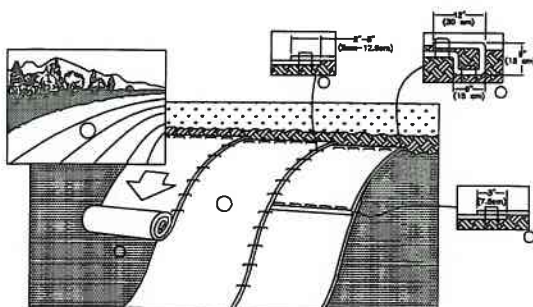


SOIL
EROSION
BLANKET

Apply to all new fill slopes steeper than 4:1. See slope installation detail.



SILT FENCE



STRAW WATTLE INSTALLATION DETAIL

N.T.S

1. PREPARE SOIL BEFORE INSTALLING ROLLED EROSION CONTROL PRODUCTS (RECP's), INCLUDING ANY NECESSARY APPLICATION OF LIME, FERTILIZER, AND SEED.
NOTE: WHEN USING CELL-O-SEED DO NOT SEED PREPARED AREA. CELL-O-SEED MUST BE INSTALLED WITH PAPER SIDE DOWN.
 2. BEGIN AT THE TOP OF THE SLOPE BY ANCHORING THE RECP's IN A 6" (15 CM) DEEP X 8" (15 CM) WIDE TRENCH WITH APPROXIMATELY 12" (30 CM) OF RECP's EXTENDED BEYOND THE UP-SLOPE PORTION OF THE TRENCH. ANCHOR THE RECP's WITH A ROW OF STAPLES/STAKES APPROXIMATELY 12" (30 CM) APART IN THE BOTTOM OF THE TRENCH. BACKFILL AND COMPACT THE TRENCH AFTER STAPLING. APPLY SEED TO COMPACTED SOIL AND FOLD REMAINING 12" (30 CM) PORTION OF RECP'S BACK OVER SEED AND COMPACTED SOIL. SECURE RECP'S OVER COMPACTED SOIL WITH A ROW OF STAPLES/STAKES SPACED APPROXIMATELY 12" (30 CM) APART ACROSS THE WIDTH OF THE RECP's.
 3. ROLL THE RECP's (A) DOWN OR (B) HORIZONTALLY ACROSS THE SLOPE. RECP's WILL UNROLL WITH APPROPRIATE SIDE AGAINST THE SOIL SURFACE. ALL RECP's MUST BE SECURELY FASTENED TO SOIL SURFACE BY PLACING STAPLES/STAKES IN APPROPRIATE LOCATIONS AS SHOWN IN THE STAPLE PATTERN GUIDE. WHEN USING THE DOT SYSTEM, STAPLES/STAKES SHOULD BE PLACED THROUGH EACH OF THE COLORED DOTS CORRESPONDING TO THE APPROPRIATE STAPLE PATTERN.
 4. THE EDGES OF PARALLEL RECP's MUST BE STAPLED WITH APPROXIMATELY 2" - 3" (5 CM - 12.5 CM) OVERLAP DEPENDING ON RECP's TYPE.
 5. CONSECUTIVE RECP's SPUN DOWN THE SLOPE MUST BE PLACED END OVER END (SHINGLE STYLE) WITH AN APPROXIMATE 3" (7.5 CM) OVERLAP. STAPLE THROUGH OVERLAPPED AREA, APPROXIMATELY 12" (30 CM) APART ACROSS ENTIRE RECP's WIDTH.
- NOTE:
*IN LOOSE SOIL CONDITIONS, THE USE OF STAPLE OR STAKE LENGTHS GREATER THAN 6" (15 CM) MAY BE NECESSARY TO PROPERLY SECURE THE RECP's.

SLOPE INSTALLATION

SEEDING (RIGHT-OF-WAY)

SEEDING PLAN

SOIL PREPARATION, FERTILIZER, SEEDING, MULCHING (NEED FREE) AND MULCH THICKNESS WILL BE REQUIRED FOR AN ESTIMATED 0.8 ACRES OF DISTURBED AREA WITHIN THE RIGHT-OF-WAY LIMITS WHICH ARE NOT SURFACED. THE FOLLOWING TYPES AND RATES SHALL BE USED:

COMMON NAME	SCIENTIFIC NAME	LBS PLS/ACRE
"WABR" WESTERN WHEATGRASS	PASCOPIRUM SMITHII	5.0
"SHAD" DROPSEED	SPOROBOLUS CRYPTANDRUS	1.0
"SALAD" ALPINE SPOON	SPOROBOLUS AIROIDES	2.0
"SALAD" ALPINE SPOON	ORYZOPSIS HYMENODES	3.0
"CHEYENNE" BROMGRASS	SCHIZACHYRUM NAUSEOSUM	4.0
"BROMAR" LITTLE BLUESTEM	SCHIZACHYRUM SCOPARIUM	4.0
"BROMAR" MOUNTAIN BROME	BROMUS MONTANUS	6.0
TOTAL		25.0 LBS

*APPLY SEED MIX TO ALL TOPSOIL AREAS AND SOIL EROSION BLANKET AREAS BEFORE BLANKET IS INSTALLED.



SGM INC.
118 W. 6th Street, Suite 200
Glenwood Springs, Colorado 81601
(970) 945-1004 (FAX 945-5948)
Aspen, Colorado (970) 925-6727

Scale: 1" = 100'

Sheet 2F of 9

Pad 21A

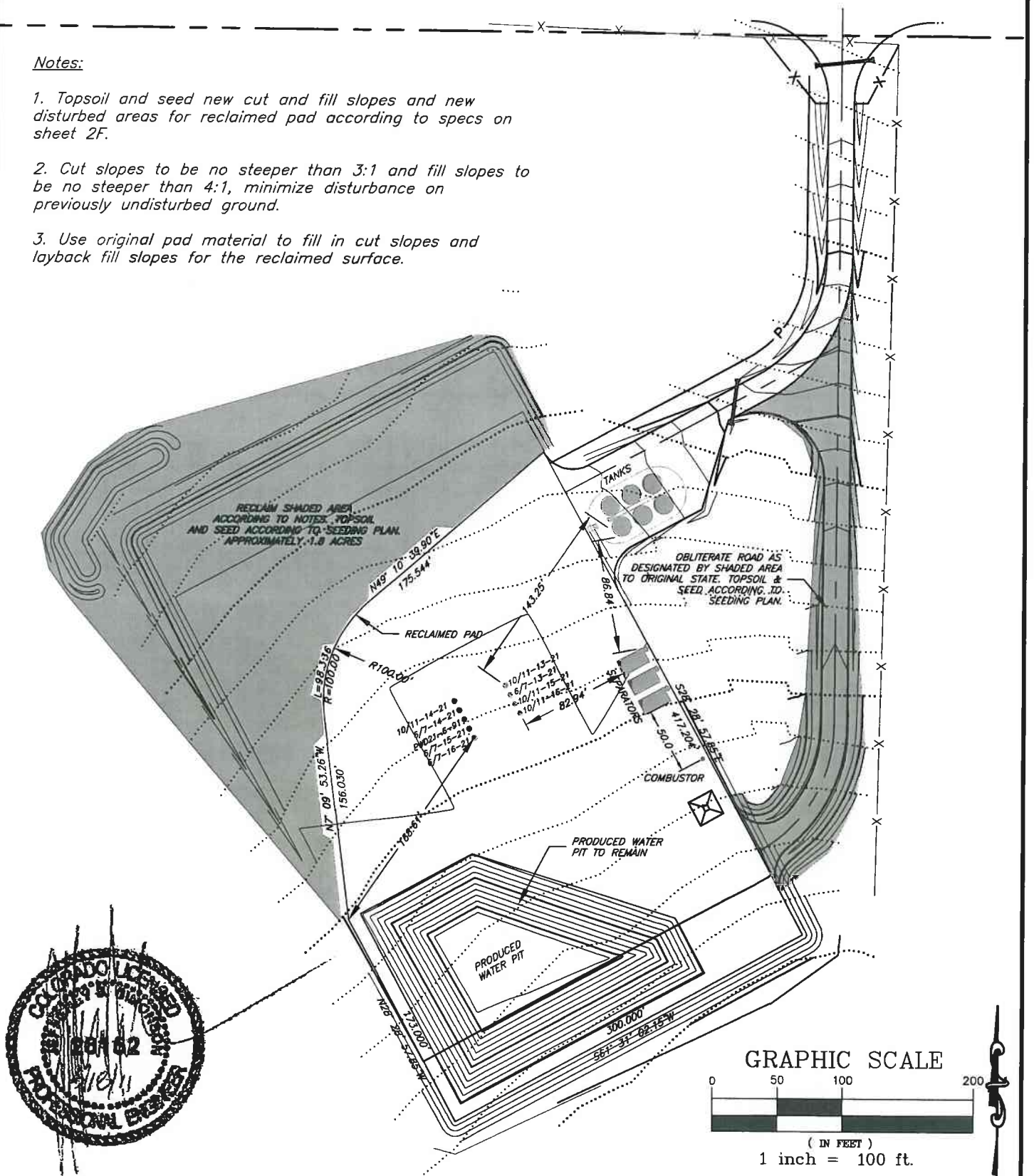
SWMP DETAILS

SW1/4SE1/4, Section 21, T.6S., R.9W., 6TH P.M.

Job# 2010-112.001 Date: 9.14.11 By: DCS File: Pad 21ABM.dwg

Notes:

1. Topsoil and seed new cut and fill slopes and new disturbed areas for reclaimed pad according to specs on sheet 2F.
2. Cut slopes to be no steeper than 3:1 and fill slopes to be no steeper than 4:1, minimize disturbance on previously undisturbed ground.
3. Use original pad material to fill in cut slopes and layback fill slopes for the reclaimed surface.



SGM INC.
 118 W. 6th Street, Suite 200
 Glenwood Springs, Colorado 81601
 (970) 945-1004 (FAX 945-5948)
 Aspen, Colorado (970) 925-6727

Scale: 1" = 100'

Sheet 2G of 9

Pad 21A

Reclamation Plan

SW1/4SE1/4, Section 21, T.6S., R.91W., 6TH P.M.

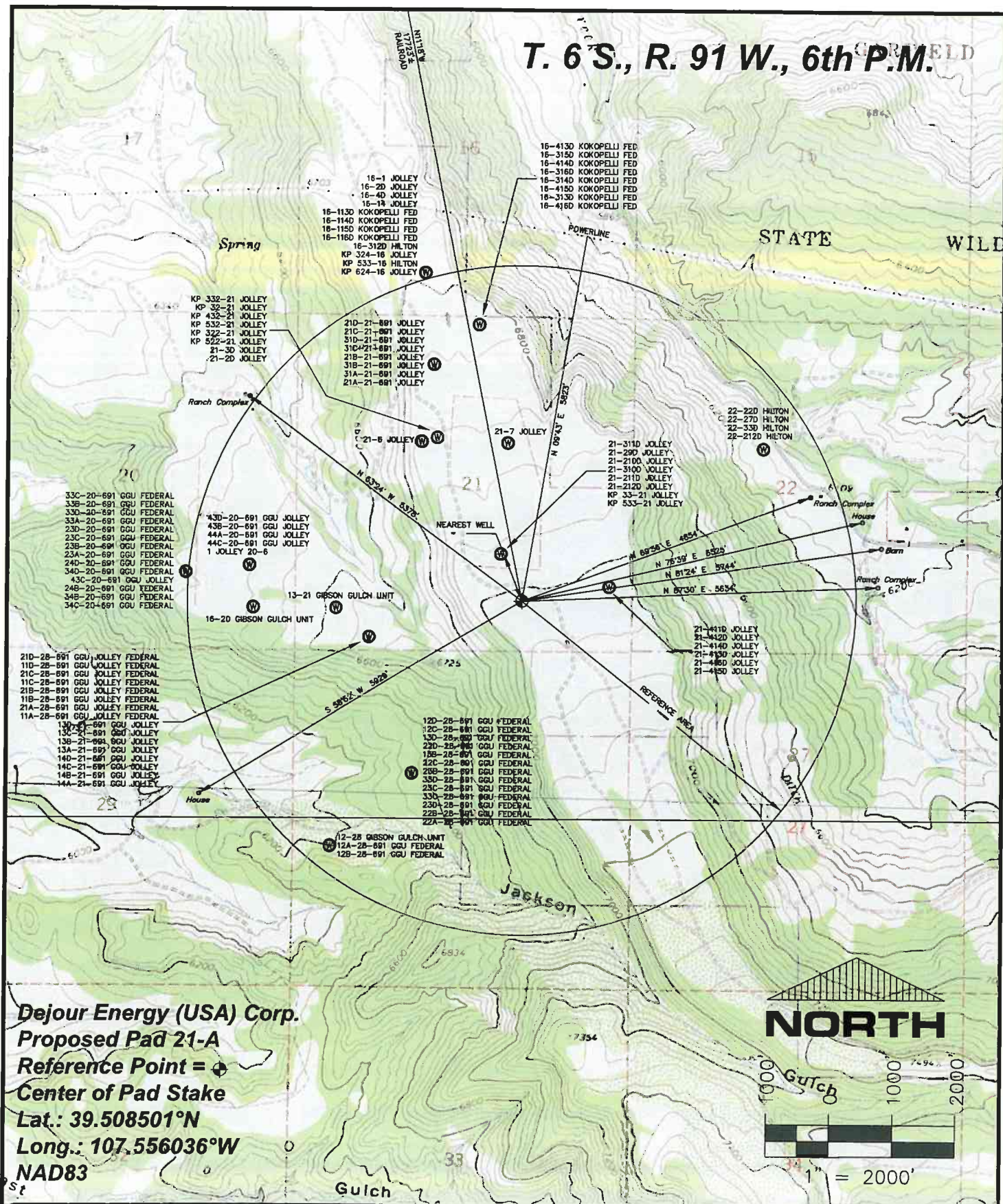
Job# 2010-112.001

Date: 9.14.11

By: DCS

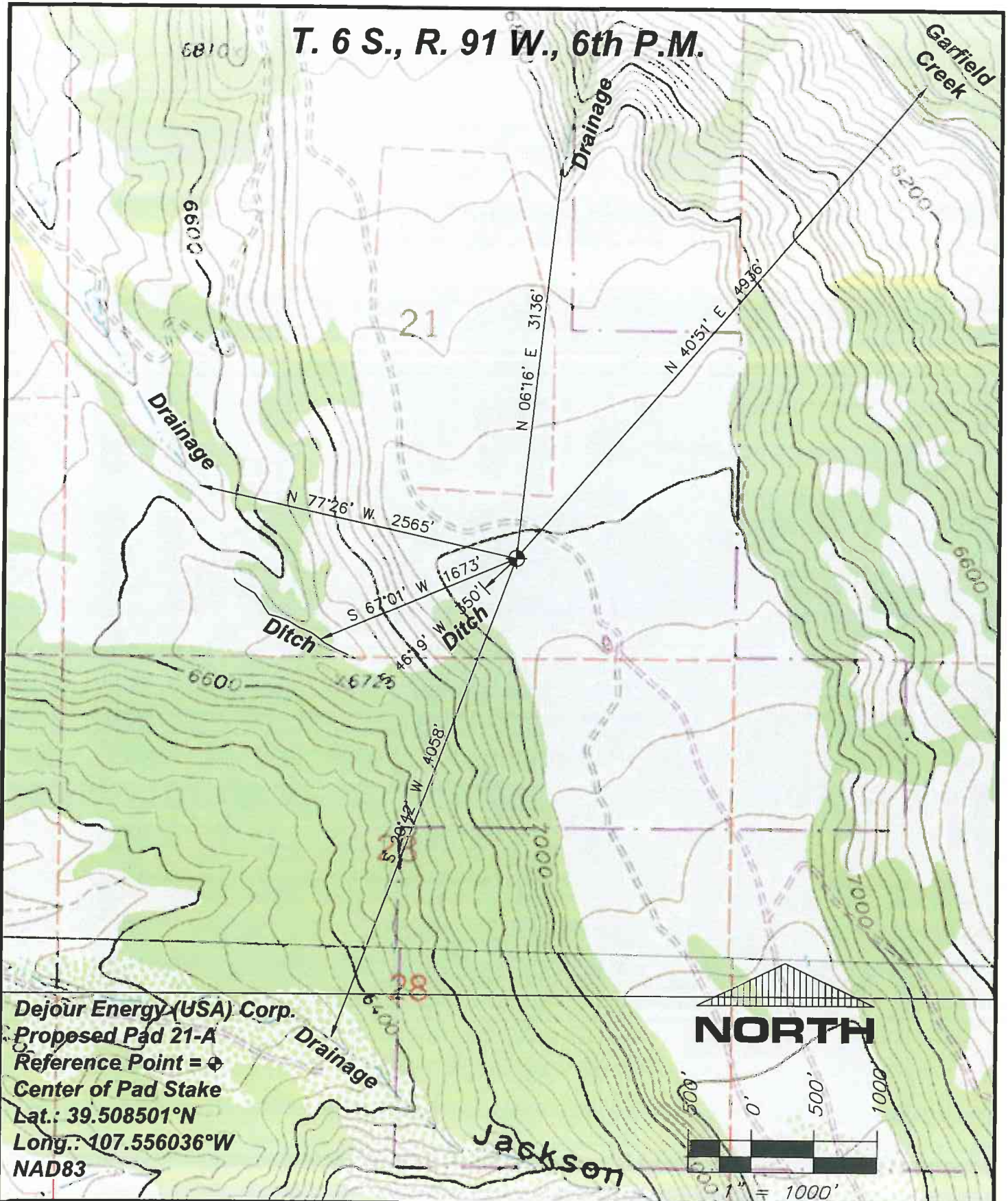
File: Pad 21ABM.dwg

T. 6 S., R. 91 W., 6th P.M.



	SGM INC. 118 W. 6th Street, Suite 200 Glenwood Springs, Co. 81601 (970)945-1004 www.SGM-Inc.com 320 Third St. Meeker, Co. 81641	1" = 2000' Sheet 3 of 9 Dejour Pad 21A	Topographic & Reference Area Map Dejour Energy (USA) Corp. Pad 21-A Job# 2010-112.001 Date: 4/22/2011 By: BG File: APD-SWSE_Sec21
--	--	---	---

T. 6 S., R. 91 W., 6th P.M.



Dejour Energy (USA) Corp.

Proposed Pad 21-A

Reference Point =

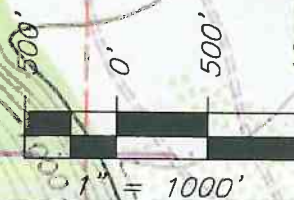
Center of Pad Stake

Lat.: 39.508501°N

Long.: 107.556036°W

NAD83

NORTH



SGM INC.
118 W. 6th Street, Suite 200
Glenwood Springs, Co. 81601
(970)945-1004 www.SGM-Inc.com
320 Third St. Meeker, Co. 81641

1" = 1000'

Sheet 4 of 9

Dejour Pad 21-A

Hydrology Map for Dejour energy (USA) Corp. Pad 21-A
T.6S., R.91W., 6th P.M., Garfield County, Colorado

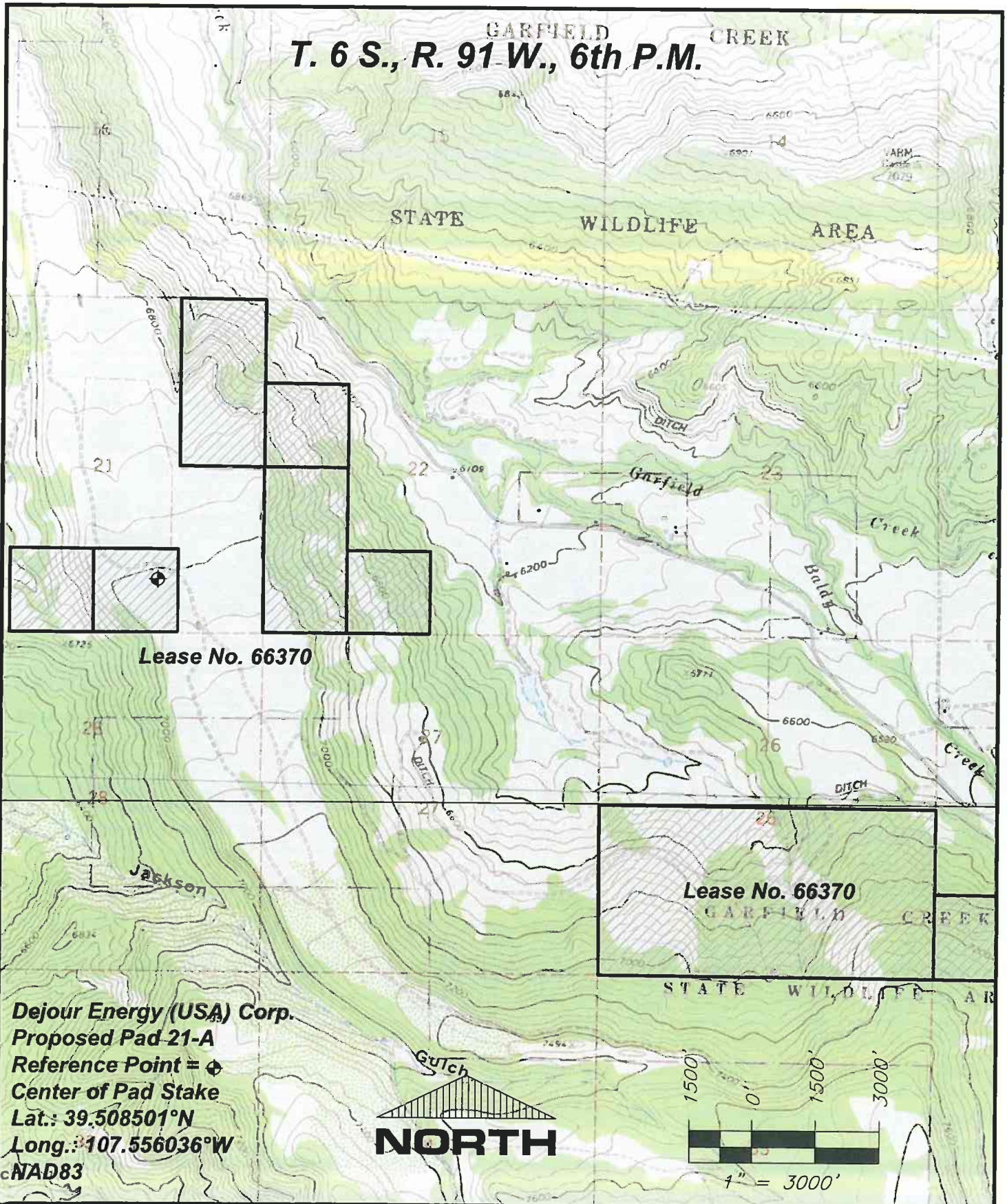
Job# 2010-112.001

Date: 4/22/2011


By: BG

File: APD-SWSE_Sec21

T. 6 S., R. 91 W., 6th P.M.



Dejour Energy (USA) Corp.
Proposed Pad 21-A

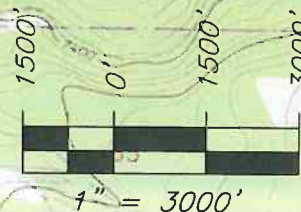
Reference Point = 

Center of Pad Stake

Lat.: 39.508501°N

Long.: 107.556036°W

NAD83



DEJ  **SGM INC.**
 118 W. 6th Street, Suite 200
 Glenwood Springs, Co. 81601
 (970)945-1004 www.SGM-Inc.com
 320 Third St. Meeker, Co. 81641

1" = 2000'
 Sheet 5 of 9
 Dejour Pad 21A

Lease No. 66370 in Portions of Sections 21,22,25&26
T.6S., R.91W., 6th P.M., Garfield County, Colorado

Job# 2010-112.001 Date: 4/22/2011 By: BG File: APD-SWSE_Sec21



**Looking East from Reference Point
May 26, 2010**



**Looking West from Reference Point
May 26, 2010**



**Looking North from Reference Point
May 26, 2010**



**Looking South from Reference Point
May 26, 2010**

**Dejour Energy (USA) Corp.
Proposed Pad 21-A
Reference Point
Center of Pad Stake
Lat.: 39.508501°N
Long.: 107.556036°W
NAD83**



SGM INC.
118 W. 6th Street, Suite 200
Glenwood Springs, Co. 81601
(970)945-1004 www.SGM-Inc.com
320 Third St. Meeker, Co. 81641

NO SCALE

Sheet 6 of 9

Dejour Pad 21A

**Location Pictures of Dejour Energy (USA) Corp. Pad 21-A
SWSEK Sec. 21, T.6S, R.91W, 6th P.M., Garfield County, Colorado**

Job# 2010-112.001

Date: 4/22/2011

By: BG

File: APD-SWSE_Sec21



**Looking East toward Reference Point
May 26, 2010**



**Looking West toward Reference Point
May 26, 2010**



**Looking North toward Reference Point
May 26, 2010**



**Looking South toward Reference Point
May 26, 2010**

**Dejour Energy (USA) Corp.
Proposed Pad 21-A
Reference Point
Center of Pad Stake
Lat.: 39.508501°N
Long.: 107.556036°W
NAD83**



SGM INC.
118 W. 6th Street, Suite 200
Glenwood Springs, Co. 81601
(970)945-1004 www.SGM-Inc.com
320 Third St. Meeker, Co. 81641

NO SCALE

Sheet 7 of 9

Dejour Pad 21A

**Location Pictures of Dejour Energy (USA) Corp. Pad 21-A
SWSEK Sec. 21, T.6S, R.91W, 6th P.M., Garfield County, Colorado**

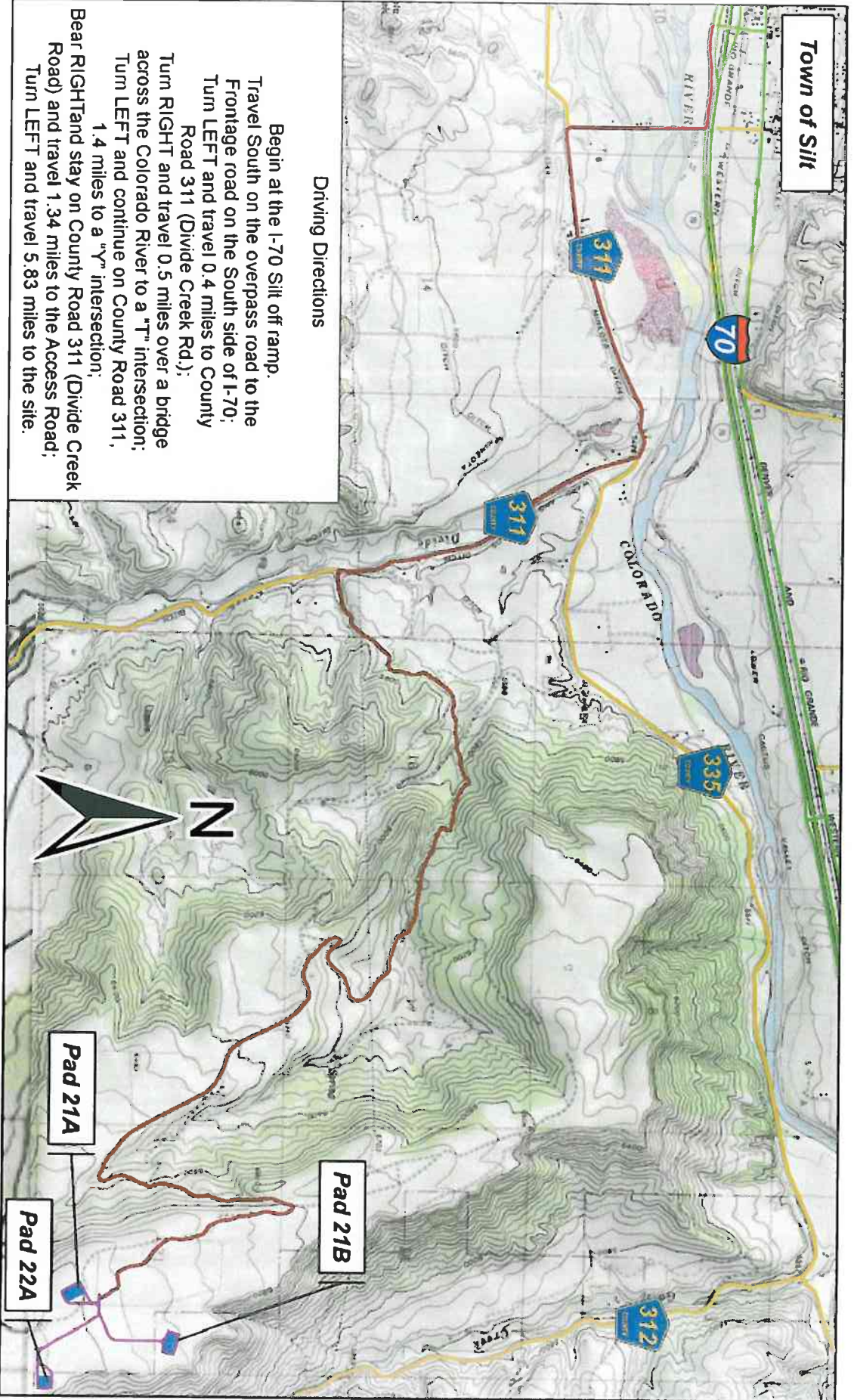
Job# 2010-112.001

Date: 4/22/2011

By: BG

File: APD-SWSE_Sec21

Town of Silt



Driving Directions

Begin at the I-70 Silt off ramp.
 Travel South on the overpass road to the Frontage road on the South side of I-70;
 Turn LEFT and travel 0.4 miles to County Road 311 (Divide Creek Rd.);
 Turn RIGHT and travel 0.5 miles over a bridge across the Colorado River to a "T" intersection;
 Turn LEFT and continue on County Road 311, 1.4 miles to a "Y" intersection;
 Turn RIGHT and stay on County Road 311 (Divide Creek Road) and travel 1.34 miles to the Access Road;
 Turn LEFT and travel 5.83 miles to the site.



SCHMUESER GORDON MEYER
 ENGINEERS SURVEYORS

SGM INC.
 118 W. 6th Street, Suite 200
 Greenwood Springs, Colorado 81601
 (970)945-1004 www.SGM-Inc.com
 Meeker, Colorado (970)878-5180

NO SCALE

Sheet 8 of 9

Pad 21A

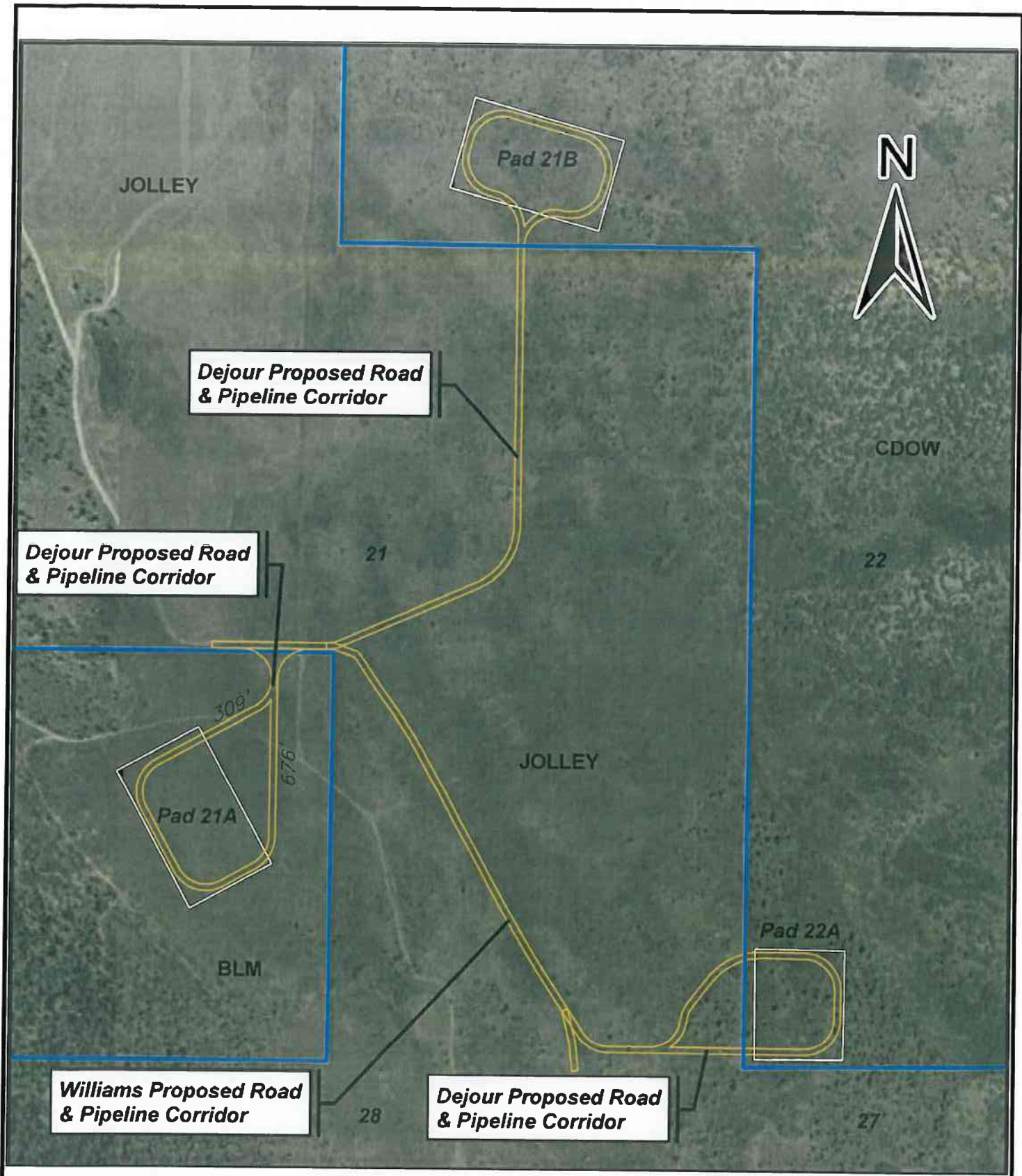
Dejour Energy (USA) Pad 21A Access Map
 Sec. 21, T.6S, R.91W, 6th P.M., Garfield County, CO

Job# 2010-112.001

Date: 4/22/11

By BG

File: JM_Access



SGM INC.
 118 W. 6th Street, Suite 200
 Glenwood Springs, Colorado 81601
 (970)945-1004 www.SGM-Inc.com
 Meeker, Colorado (970)878-5180

NO SCALE
 Sheet 9 of 9
 Pad 21A

Dejour Energy (USA) – Access Map Detail
 Pad 21A – Section 21, T.6S., R.91W., 6th P.M.
 Job# 2010-112.001 Date: 4/22/11 By: BG File: JM_Access