

HIGH PLAINS ENERGY LLC
DO NOT MAIL - BOX 26
BRIDGEPORT, West Virginia

Bradbury
Bradbury 11-35

Post Job Summary

Cement Production Casing

Date Prepared: 12/14/2011
Version: 1

Service Supervisor: WHEELER, JUSTIN

Submitted by: PLIENESS, RYAN

HALLIBURTON

HALLIBURTON

Pumping Schedule

Stage /Plug #	Fluid #	Fluid Type	Fluid Name	Surface Density lbm/gal	Avg Rate bbl/min	Surface Volume	Downhole Volume
1	1	Spacer	MUD FLUSH III	8.40	5.00	24.0 bbl	24.0 bbl
1	2	Cement Slurry	Fraccem 13.5#	13.50		200.0 sacks	200.0 sacks

Fluids Pumped

Stage/Plug # 1 Fluid 1: MUD FLUSH III
MUD FLUSH III - SBM (528788)

Fluid Density: 8.40 lbm/gal
Fluid Volume: 24.00 bbl
Pump Rate: 5.00 bbl/min

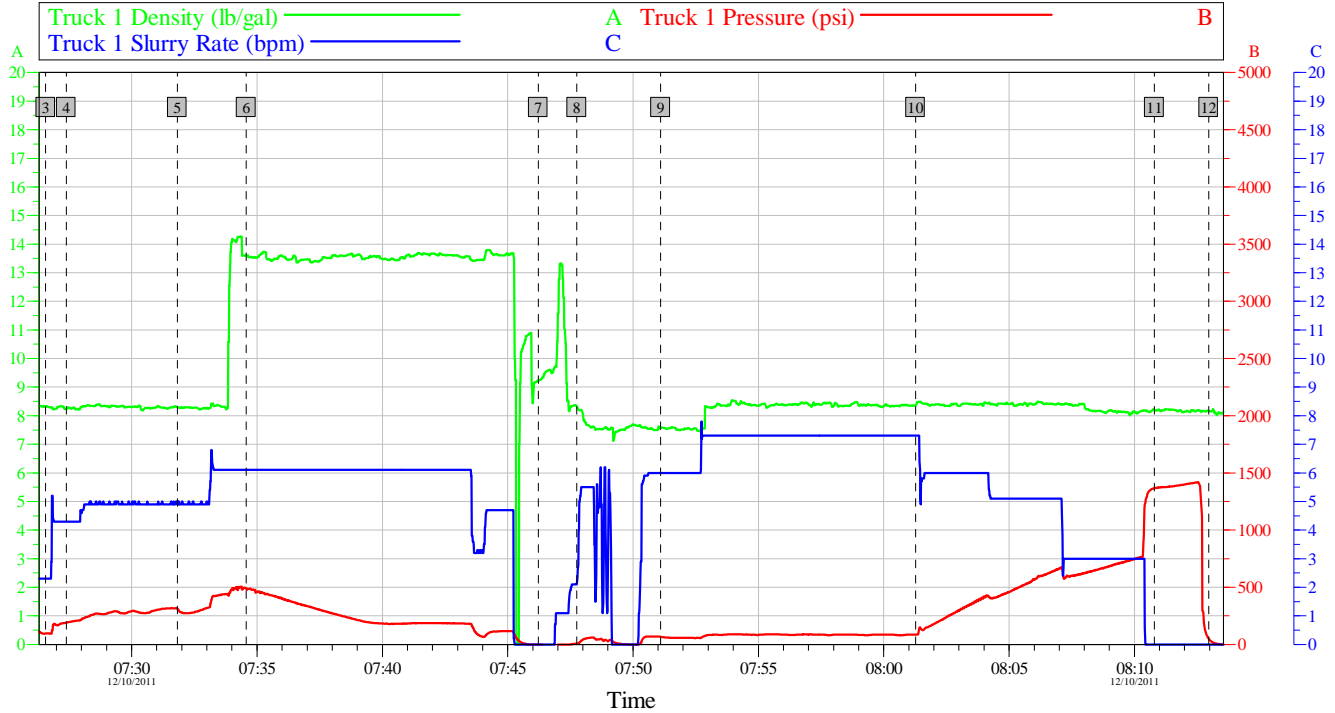
Stage/Plug # 1 Fluid 2: Fraccem 13.5#
FRACCEM (TM) SYSTEM

Fluid Weight: 13.50 lbm/gal
Slurry Yield: 1.74 ft³/sack
Total Mixing Fluid: 8.31 Gal
Surface Volume: 200.0 sacks
Sacks: 200.0 sacks
Estimated Top of Fluid:

HALLIBURTON

Data Acquisition

High Plains - Bradbury 11-35
4 1/2" Production Casing



Global Event Log														
Intersection			TIP	TISR	Intersection			TIP	TISR	Intersection			TIP	TISR
3	Start Job	07:26:34	96.88	2.300	4	Pump Mud Flush	07:27:24	190.7	4.300	5	Pump Fresh Water	07:31:49	309.1	4.901
6	Pump Cement	07:34:34	492.0	6.100	7	Drop Top Plug	07:46:13	0.000	0.000	8	Clean Lines	07:47:46	6.000	2.104
9	Pump Displacement	07:51:06	66.58	6.000	10	Displ Reached Cmmt	08:01:16	86.00	7.300	11	Bump Plug	08:10:48	1366	0.000
12	Check Floats, Floats Holding	08:12:58	51.56	0.000										

Customer: High Plains
Well Description: Bradbury 11-35

Job Date: 10-Dec-2011
UWI:

Sales Order #: 9127669

OptiCem v6.4.9
10-Dec-11 09:02

HALLIBURTON

Service Supervisor Reports

Job Log

Date/Time	Chart #	Activity Code	Pump Rate	Cum Vol	Pump		Pressure (psig)	Comments
12/10/2011 02:00		Depart from Service Center or Other Site						
12/10/2011 03:30		Arrive At Loc						
12/10/2011 05:00		Safety Meeting - Pre Rig-Up						
12/10/2011 07:27		Pump Spacer	4.5	24			190.0	Pump Mud Flush
12/10/2011 07:31		Pump Spacer	5	10			310.0	Pump Fresh Water
12/10/2011 07:34		Pump Cement	6	62			490.0	Mix and Pump 200 sks FracCem Cement @ 13.5 lb/gal
12/10/2011 07:46		Drop Top Plug						Shut-Down, Drop Top Plug
12/10/2011 07:47		Clean Lines		10				Wash Pumps and Lines to Pit
12/10/2011 07:51		Pump Displacement - Start	6	0			65.0	Pump Clayfix Water Displacement
12/10/2011 08:10		Pump Displacement - End	3	115			765.0	Good Returns Throughout Job
12/10/2011 08:10		Bump Plug	3	115			1365.0	
12/10/2011 08:12		Check Floats						Floats Holding
12/10/2011 08:13		End Job						
12/10/2011 08:30		Safety Meeting - Pre Rig-Down						
12/10/2011 09:00		Safety Meeting - Departing Location						

The Road to Excellence Starts with Safety

Sold To #: 366236	Ship To #: 2896244	Quote #:	Sales Order #: 9127669
Customer: HIGH PLAINS ENERGY LLC	Customer Rep: Hope, Craig		
Well Name: Bradbury	Well #: 11-35	API/UWI #:	
Field:	City (SAP): STRASBURG	County/Parish: Arapahoe	State: Colorado
Contractor: ?	Rig/Platform Name/Num: ??		
Job Purpose: Cement Production Casing			
Well Type: Producing Well	Job Type: Cement Production Casing		
Sales Person: FLING, MATTHEW	Srv Supervisor: WHEELER, JUSTIN	MBU ID Emp #: 196470	

Job Personnel

HES Emp Name	Exp Hrs	Emp #	HES Emp Name	Exp Hrs	Emp #	HES Emp Name	Exp Hrs	Emp #
KUNERT, RANDY Joe		477850	TAYLOR, JOSHUA Lin		485939	WHEELER, JUSTIN W		196470

Equipment

HES Unit #	Distance-1 way	HES Unit #	Distance-1 way	HES Unit #	Distance-1 way	HES Unit #	Distance-1 way
11019824	60 mile	11542778	60 mile	11605599	60 mile		

Job Hours

Date	On Location Hours	Operating Hours	Date	On Location Hours	Operating Hours	Date	On Location Hours	Operating Hours
TOTAL			Total is the sum of each column separately					

Job

Formation Name	Top	Bottom	Called Out	Date	Time	Time Zone
Formation Depth (MD)			On Location	10 - Dec - 2011	03:30	MST
Form Type		BHST	Job Started	10 - Dec - 2011	07:26	MST
Job depth MD	7500. ft	Job Depth TVD	7500. ft	Job Completed	10 - Dec - 2011	08:13
Water Depth		Wk Ht Above Floor		Departed Loc	10 - Dec - 2011	09:00
Perforation Depth (MD)	From	To				

Well Data

Description	New / Used	Max pressure psig	Size in	ID in	Weight lbm/ft	Thread	Grade	Top MD ft	Bottom MD ft	Top TVD ft	Bottom TVD ft
Open Hole				7.875				1340.	7500.		
Production Casing	Unknown		4.5	4.	11.6			.	7500.	.	.
Surface Casing	Unknown		8.625	8.097	24.		J-55	.	1340.	.	.

Sales/Rental/3rd Party (HES)

Description	Qty	Qty uom	Depth	Supplier
SHOE,FLT,4-1/2 8RD,2-3/4 SSII	1	EA		
CLR,FLT,4-1/2 8RD,9.5-13.5PPF,2-3/4	1	EA		
CENTRALIZER ASSY - API - 4-1/2 CSG X	10	EA		
CLAMP - LIMIT - 4-1/2 - HINGED -	1	EA		
PLUG,CMTG,TOP,4 1/2,HWE,3.65 MIN/4.14 MA	1	EA		
KIT,HALL WELD-A	1	EA		

Tools and Accessories													
Type	Size	Qty	Make	Depth	Type	Size	Qty	Make	Depth	Type	Size	Qty	Make
Guide Shoe					Packer					Top Plug			
Float Shoe					Bridge Plug					Bottom Plug			
Float Collar					Retainer					SSR plug set			
Insert Float										Plug Container			
Stage Tool										Centralizers			
Miscellaneous Materials													
Gelling Agt			Conc		Surfactant			Conc		Acid Type		Qty	Conc %
Treatment Fld			Conc		Inhibitor			Conc		Sand Type		Size	Qty
Fluid Data													
Stage/Plug #: 1													
Fluid #	Stage Type	Fluid Name			Qty	Qty uom	Mixing Density lbm/gal	Yield ft3/sk	Mix Fluid Gal/sk	Rate bbl/min	Total Mix Fluid Gal/sk		
1	MUD FLUSH III	MUD FLUSH III - SBM (528788)			24.00	bbl	8.4	.0	1000.0	5.0			
2	Fraccem 13.5#	FRACCEM (TM) SYSTEM (452963)			200.0	sacks	13.5	1.74	8.31		8.31		
8.31 Gal		FRESH WATER											
Calculated Values		Pressures		Volumes									
Displacement		Shut In: Instant		Lost Returns		Cement Slurry		Pad					
Top Of Cement		5 Min		Cement Returns		Actual Displacement		Treatment					
Frac Gradient		15 Min		Spacers		Load and Breakdown		Total Job					
Rates													
Circulating		Mixing		Displacement		Avg. Job							
Cement Left In Pipe		Amount	25 ft	Reason	Shoe Joint								
Frac Ring # 1 @	ID	Frac ring # 2 @	ID	Frac Ring # 3 @	ID	Frac Ring # 4 @	ID						
The Information Stated Herein Is Correct					Customer Representative Signature								

