

1801 Broadway
Suite 500
Denver, Colorado 80202



Shannon Hartnett
Regulatory Compliance Specialist
Tel: 303.398.0351
E-mail: shartnett@gwogco.com

November 22, 2013

Colorado Oil and Gas Conservation Commission
1120 Lincoln Street, Suite 801
Denver, Colorado 80203

RE: **Proposed Wellbore Spacing Unit**
Postle IC 11-382HN

Niobrara New Drill
Township 3 North, Range 68 West, 6th P.M.
Section 11: All
Weld County, Colorado

Dear Director:

Great Western Operating Company, LLC is planning to drill the above captioned well in accordance with the provisions of COGCC Rule 318(l)e(2).

Great Western proposed wellbore spacing unit consists of:

- **All - Sec. 11-T3N-R68W**

The 30 day notification time has passed and we have not received any objections to such well locations or proposed spacing unit, therefore Great Western hereby requests the Director to approve the above mentioned well. Great Western Operating Company, LLC respectfully requests that the COGCC review the enclosed map illustrating the proposed wellbore spacing unit.

Respectfully,



Shannon Hartnett
Regulatory Compliance Specialist
Great Western Operating Company, LLC

73N, R68W, 6th P.M.

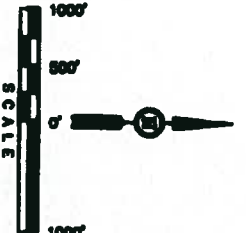
GREAT WESTERN OIL & GAS COMPANY
Well location, POSTLE IC #11-3824W, located as shown in the SW 1/4 SW 1/4 of Section 12, T3N, R68W, 6th P.M., Weld County, Colorado.

BASES OF ELEVATION

USGS COOPERATING BASE NETWORK CONTROL STATION, REGENERATION VERMILION, HAS DATA SHEET LISTING HAD AN ELEVATION AS BEING 5005 FEET

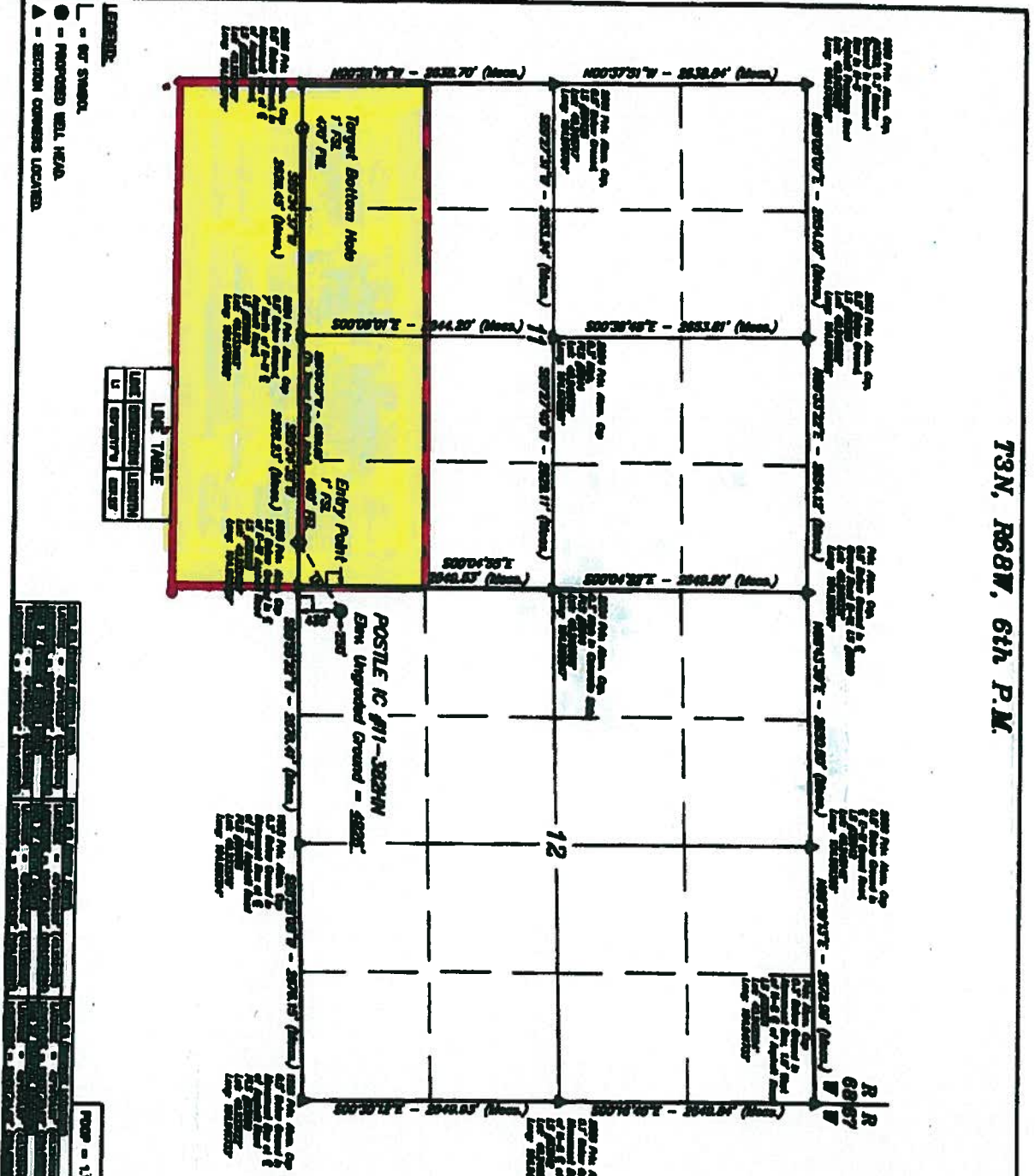
BASES OF BEARINGS

BASES OF BEARINGS IS A GPS OBSERVATION.



Thomas Thompson & Land Services
400 NORTH 400 EAST - VERMILION, COLORADO 80050
(408) 780-0077

| | | | |
|------|----------------------------------|------|----------|
| DATE | 04-10-13 | DATE | 09-12-13 |
| BY | DLG, JAL | BY | DLG, JAL |
| FOR | COOL | FOR | COOL |
| RE | RENT EDITION ON A 60% COMPLETION | | |



| LINE | SECTION | LOCATION |
|------|---------|----------|
| 1 | 1 | 1 |
| 2 | 2 | 2 |
| 3 | 3 | 3 |
| 4 | 4 | 4 |
| 5 | 5 | 5 |
| 6 | 6 | 6 |
| 7 | 7 | 7 |
| 8 | 8 | 8 |
| 9 | 9 | 9 |
| 10 | 10 | 10 |
| 11 | 11 | 11 |
| 12 | 12 | 12 |

- LEGEND:**
- OF STAKE
 - PROPOSED WELL HEAD
 - ▲ SECTION CORNERS LOCATED