

T3N, R68W, 6th P.M.

GREAT WESTERN OIL & GAS COMPANY

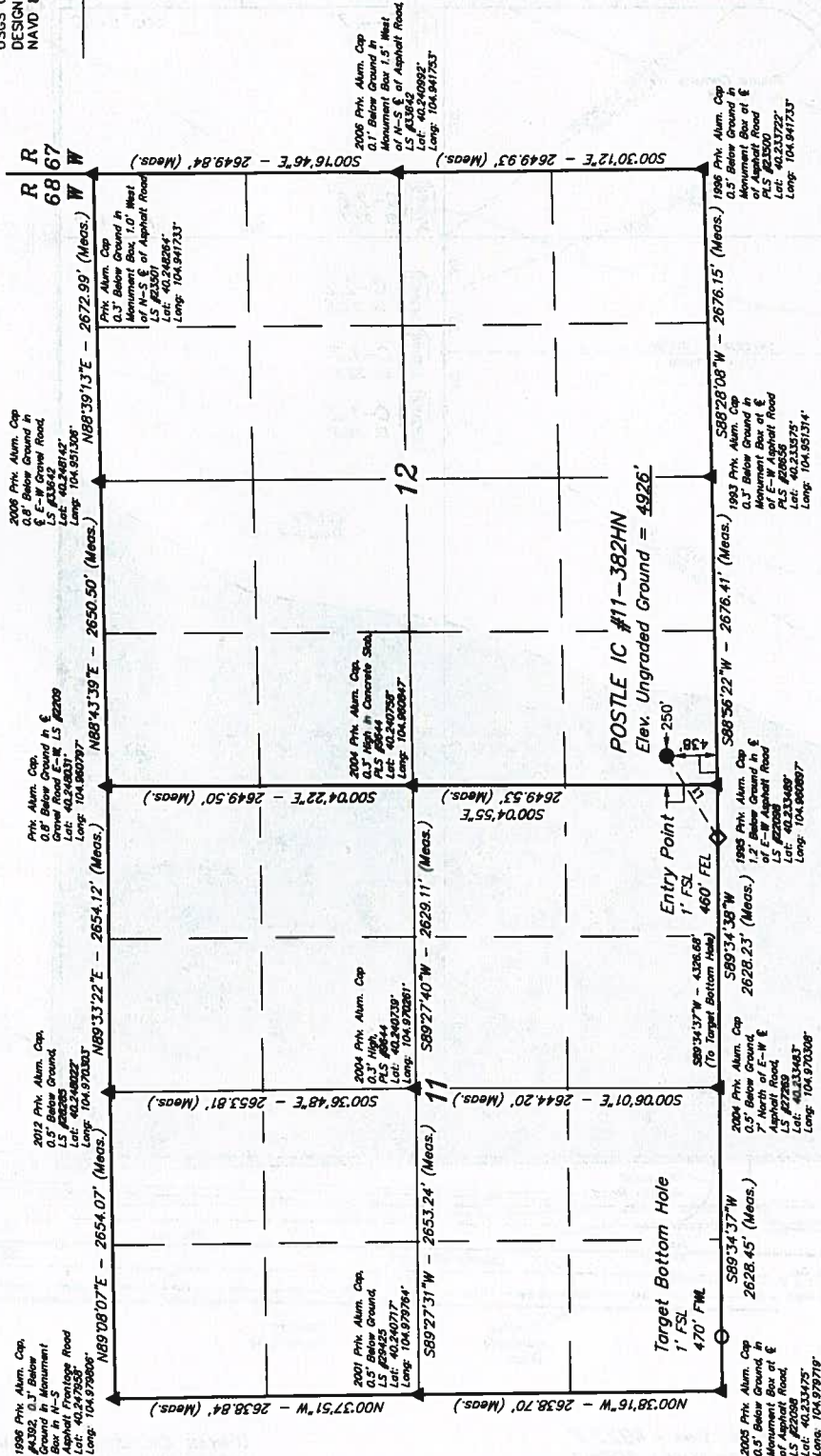
Well location, POSTLE IC #11-382HN, located as shown in the SW 1/4 SW 1/4 of Section 12, T3N, R68W, 6th P.M., Weld County, Colorado.

BASIS OF ELEVATION

USGS COOPERATIVE BASE NETWORK CONTROL STATION, DESIGNATION 'VERMILYEA'. NGS DATA SHEET LISTS THE NAVD 88 ELEVATION AS BEING 5026 FEET

BASIS OF BEARINGS

BASIS OF BEARINGS IS A C.P.S. OBSERVATION.



LINE TABLE	
LINE	LENGTH
L1	587'56.17"W
L2	837.23'

- LEGEND:
- 90° SYMBOL
  - PROPOSED WELL HEAD.
  - SECTION CORNERS LOCATED.

CERTIFICATE

THIS IS TO CERTIFY THAT THE ABOVE SURVEY WAS MADE BY A LICENSED SURVEYOR UNDER THE SUPERVISION AND THAT THE SAME ARE TRUE AND CORRECT TO THE BEST OF MY KNOWLEDGE AND BELIEF.

RECEIVED BY: [Signature]  
DATE: 04-19-13  
STATE OF COLORADO: 09-12-13

UTAH ENGINEERING & LAND SURVEYING	
85 SOUTH 200 EAST - VERNAL, UTAH 84078	
(435) 789-1017	
SCALE: 1" = 1000'	DATE SURVEYED: 04-19-13
PARTY: D.N. G.W. J.W.	REFERENCES: G.L.O. PLAT
WEATHER: COOL	FILE: GREAT WESTERN OIL & GAS COMPANY