

T3N, R68W, 6th P.M.

GREAT WESTERN OIL & GAS COMPANY

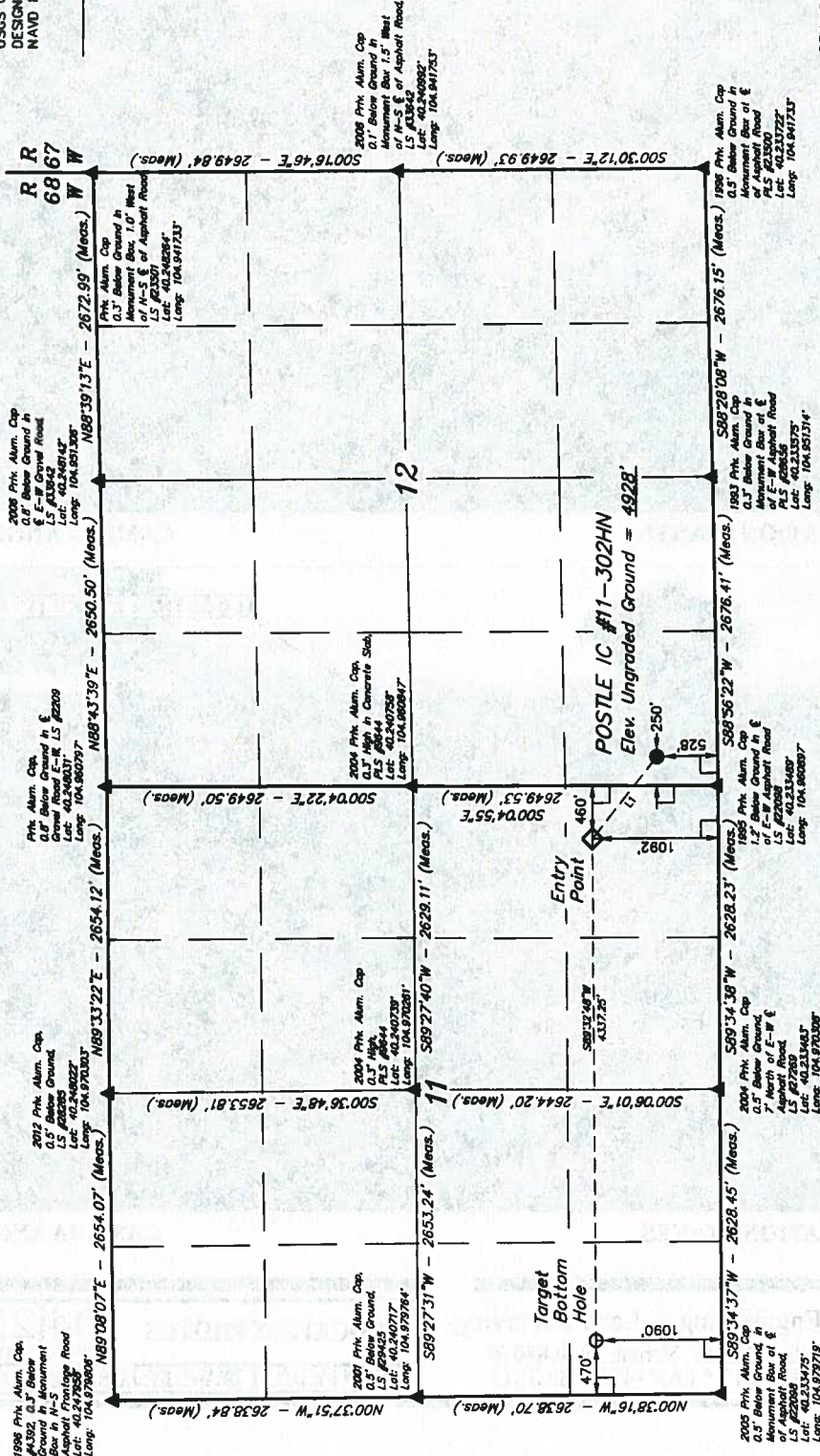
Well location, POSTLE IC #11-302HN, located as shown in the SW 1/4 SW 1/4 of Section 12, T3N, R68W, 6th P.M., Weld County, Colorado.

BASIS OF ELEVATION

USGS COOPERATIVE BASE NETWORK CONTROL STATION, DESIGNATION 'VERMILYEA'. NGS DATA SHEET LISTS THE NAVD 88 ELEVATION AS BEING 5026 FEET

BASIS OF BEARINGS

BASIS OF BEARINGS IS A G.P.S. OBSERVATION.



CERTIFICATE

THIS IS TO CERTIFY THAT THE ABOVE SURVEY WAS MADE BY THE FIELD NOTES OF ACTUAL SURVEYS MADE BY THE SURVEYOR AND THAT THE SAME ARE TRUE AND CORRECT TO THE BEST OF MY KNOWLEDGE AND BELIEF.

REV: 09-12-13 J.W.
REV: 08-15-13 J.W.
REV: 05-28-13 A.D.

RESIDENT AND SURVEYOR
STATE OF COLORADO
COUNTY OF WELD

UTAH ENGINEERING & LAND SURVEYING		86 SOUTH 200 EAST - VERNAL, UTAH 84078	
(435) 789-1017			
SCALE	1" = 1000'	DATE SURVEYED	04-19-13
PARTY	D.N. G.W. J.W.	DATE DRAWN	04-24-13
WEATHER	COOL	REFERENCES	G.L.O. PLAT
		FILE	GREAT WESTERN OIL & GAS COMPANY

LINE TABLE	
LINE	DIRECTION LENGTH
L1	N51°36'59"W 802.70'

- LEGEND:**
- = 90° SYMBOL
 - = PROPOSED WELL HEAD.
 - ▲ = SECTION CORNERS LOCATED.

MAD 83 (SURFACE LOCATION)	
LATITUDE = 40°14'08.80"	LONGITUDE = 104°57'35.97"
LATITUDE = 40°14'08.80"	LONGITUDE = 104°57'35.97"
MAD 83 (ENTRY POINT)	
LATITUDE = 40°14'11.54"	LONGITUDE = 104°57'45.09"
LATITUDE = 40°14'11.54"	LONGITUDE = 104°57'45.09"
MAD 83 (BOTTOM HOLE)	
LATITUDE = 40°14'11.54"	LONGITUDE = 104°57'45.09"
LATITUDE = 40°14'11.54"	LONGITUDE = 104°57'45.09"