

T3N, R68W, 6th P.M.

GREAT WESTERN OIL & GAS COMPANY

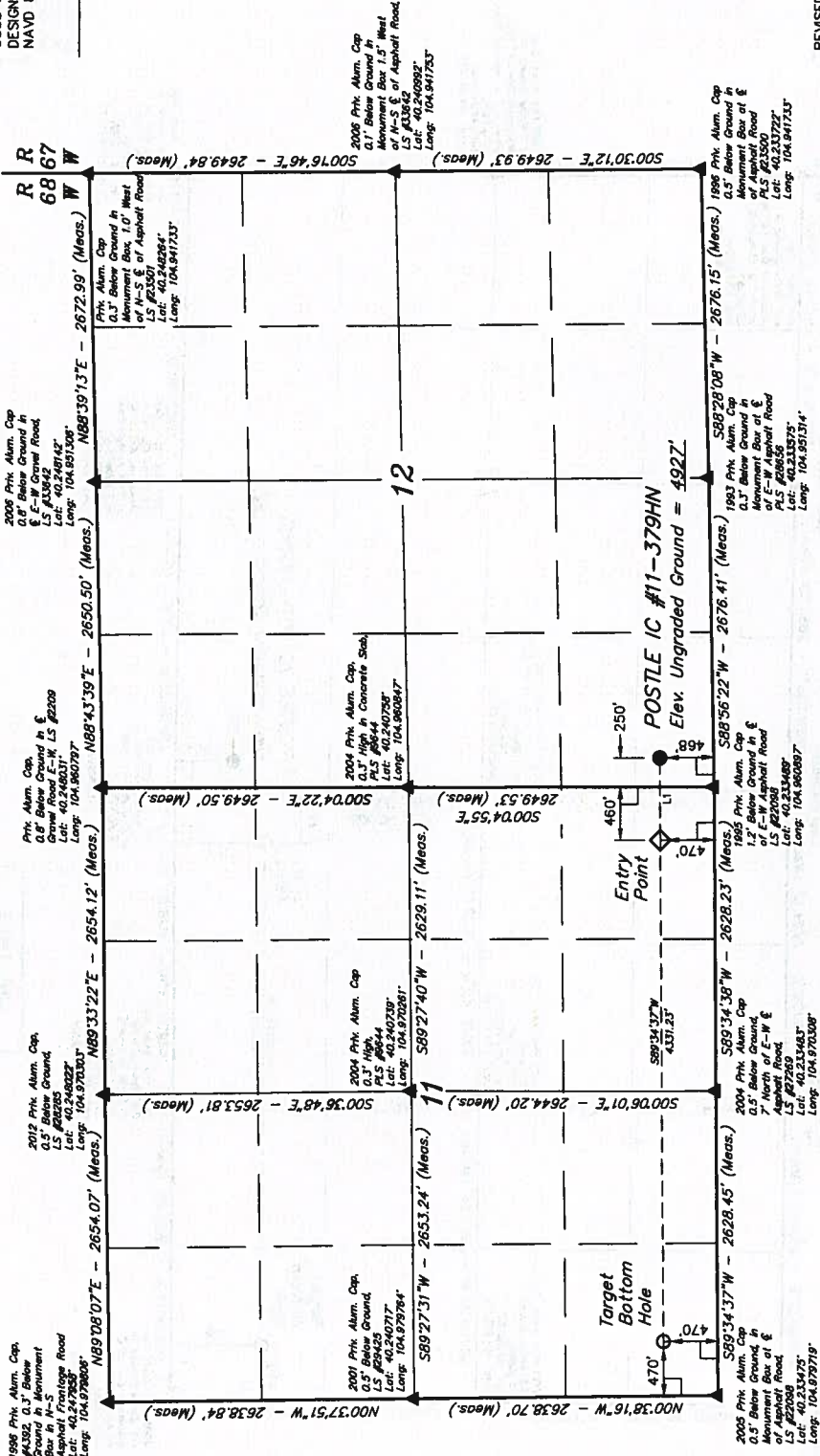
Well location, POSTLE IC #11-379HN, located as shown in the SW 1/4 SW 1/4 of Section 12, T3N, R68W, 6th P.M., Weld County, Colorado.

BASIS OF ELEVATION

USGS COOPERATIVE BASE NETWORK CONTROL STATION, DESIGNATION 'VERMILYEA'. NGS DATA SHEET LISTS THE NAVD 88 ELEVATION AS BEING 5026 FEET

BASIS OF BEARINGS

BASIS OF BEARINGS IS A G.P.S. OBSERVATION.



CERTIFICATE
THIS IS TO CERTIFY THAT THE ABOVE SURVEY WAS CONDUCTED BY THE FIELD NOTES OF ACTUAL SURVEYS MADE BY A REGISTERED SURVEYOR UNDER THE SUPERVISION AND THAT THE SAME ARE TRUE AND CORRECT TO THE BEST OF MY KNOWLEDGE AND BELIEF.
RECORDED AND INDEXED
STATE OF COLORADO
9-12-13 J.W.
REVISOR: 09-12-13 J.W.
REVISOR: 08-15-13 J.W.
REVISOR: 05-28-13 A.D.

UTAH ENGINEERING & LAND SURVEYING	
85 SOUTH 800 EAST - VERNAL, UTAH 84078	
(435) 789-1017	
SCALE 1" = 1000'	DATE SURVEYED: 04-19-13
PARTY D.N. G.W. J.W.	DATE DRAWN: 04-24-13
WEATHER COOL	REFERENCES G.L.O. PLAT
FILE GREAT WESTERN OIL & GAS COMPANY	

LINE TABLE	
LINE	DIRECTION/LENGTH
L1	S89°32'38"W 710.08'

- LEGEND:
- = 90° SYMBOL
 - = PROPOSED WELL HEAD.
 - = SECTION CORNERS LOCATED.

MAD 83 (TARGET BOTTOM HOLE)	
LATITUDE = 40°14'03.16"	(40.234781)
LONGITUDE = 104°57'45.13"	(104.952336)
MAD 83 (SURFACE LOCATION)	
LATITUDE = 40°14'03.21"	(40.234781)
LONGITUDE = 104°57'45.13"	(104.952336)
MAD 83 (ENTRY POINT)	
LATITUDE = 40°14'03.25"	(40.234783)
LONGITUDE = 104°57'45.13"	(104.952336)
MAD 83 (ENTRY POINT)	
LATITUDE = 40°14'03.25"	(40.234783)
LONGITUDE = 104°57'45.13"	(104.952336)