

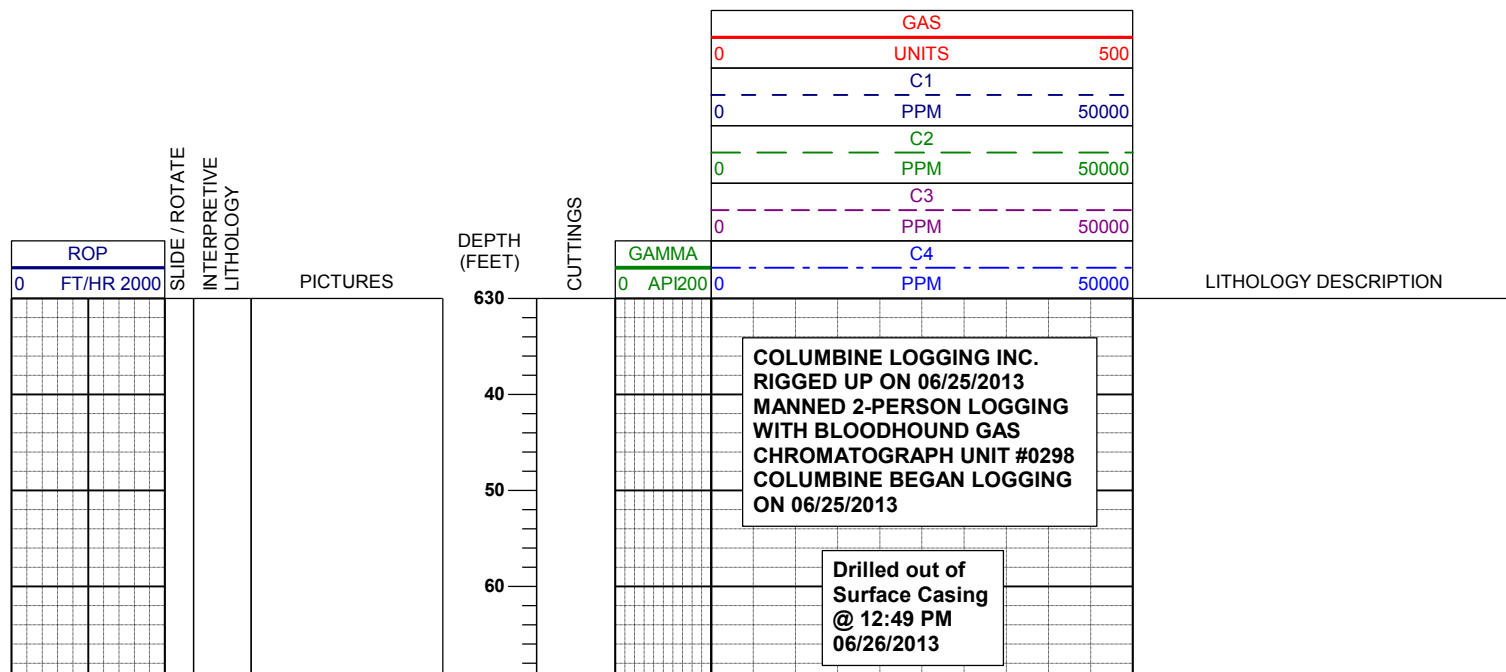
LOG created using L PLOT VH Version 3.0, July 01, 2013, Copyright (C) 1999-2009 Pason Systems Corp.

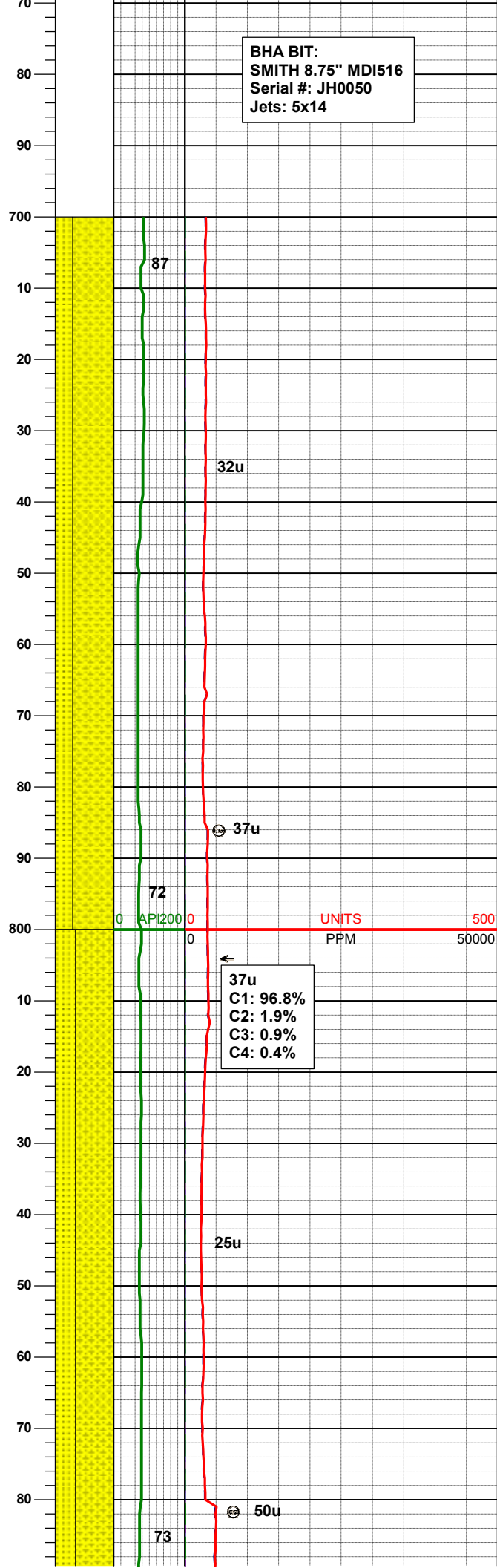
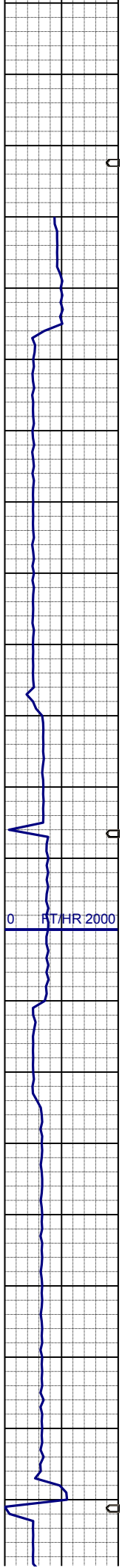
OPERATOR:	NOBLE ENERGY INC.
WELL:	TIMBRO FEDERAL LD07-78HN
LOCATION:	SEC 7, T9N, R58W
COUNTY:	WELD
STATE:	COLORADO
SPOT:	255' FNL, 360' FWL
ELEVATION:	GR 4854', KB 4884'
FIELD:	WILDCAT
SPUD DATE:	06/25/2013
TD DATE:	06/27/2013
DATES LOGGED:	06/15/2013 - 06/27/2013
DEPTHS LOGGED:	700' MD - 5210' MD
LOGGERS:	ANDREA ZUIDEMA, MATTHEW HOPKINS
DRILLING FLUID:	LSND
DRILLING RIG:	H&P 326
API:	05-123-37002
LOG TYPE:	VERTICAL
SCALE:	1:240 (5 inches per 100 feet)
REMARKS:	WELLSITE GEOLOGICAL SERVICES PROVIDED BY COLUMBINE LOGGING INC.

LITHOLOGIES



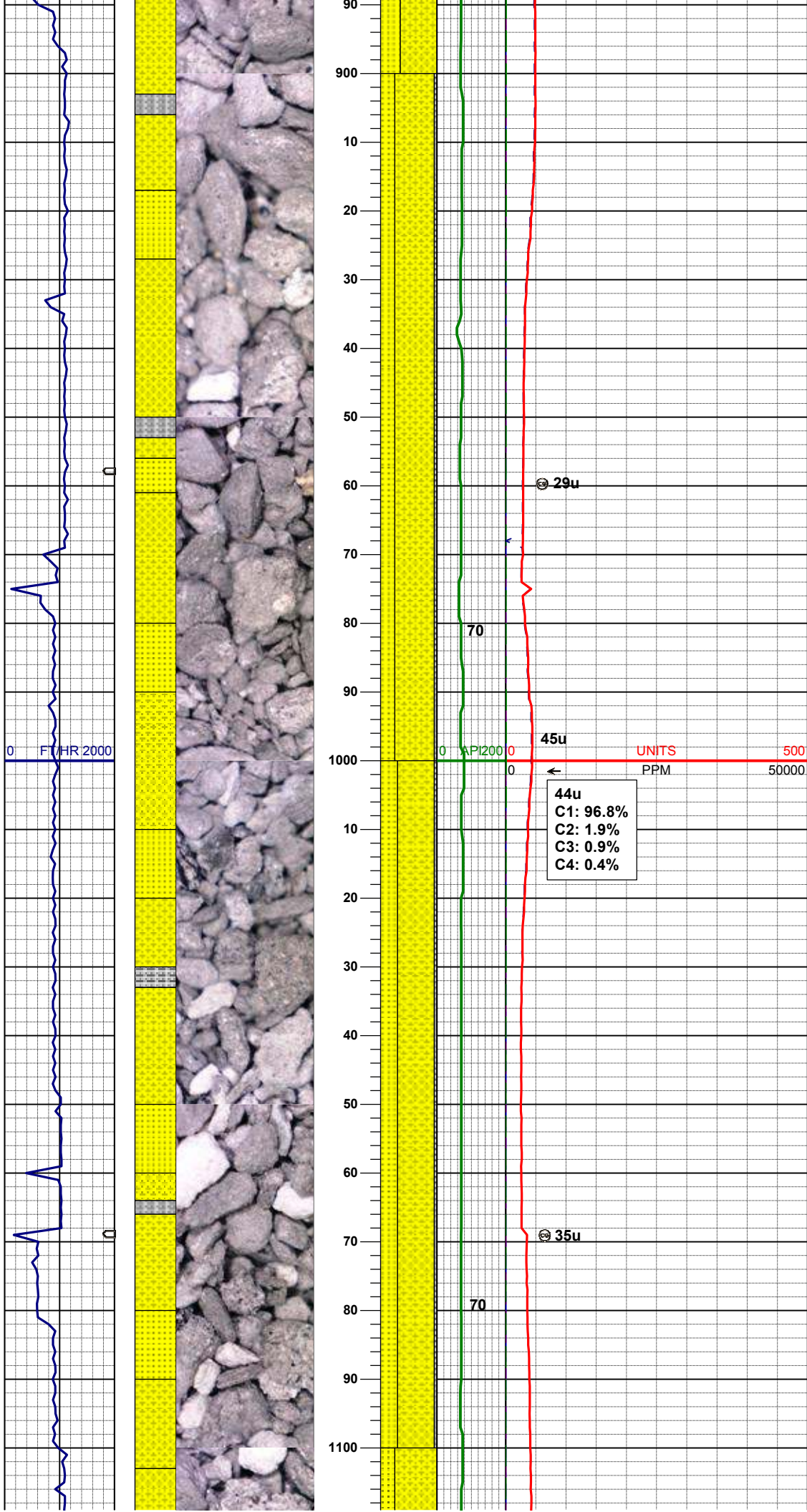
ENGINEERING SYMBOLS





SHYSS: lt gy - wh, s&p, f gr, sbang -
sbrnrd, mod srt, occ phlog, arg cmt
SS: wh-trnsl, s&p, f gr, sbang-sbrnrd,
mod srt, tr phlog, arg cmt

SHYSS: lt gy - wh, s&p, f gr, sbang -
sbrnrd, mod srt, occ phlog, arg cmt
SS: wh-trnsl, s&p, f gr, sbang-sbrnrd,
mod srt, tr phlog, arg cmt



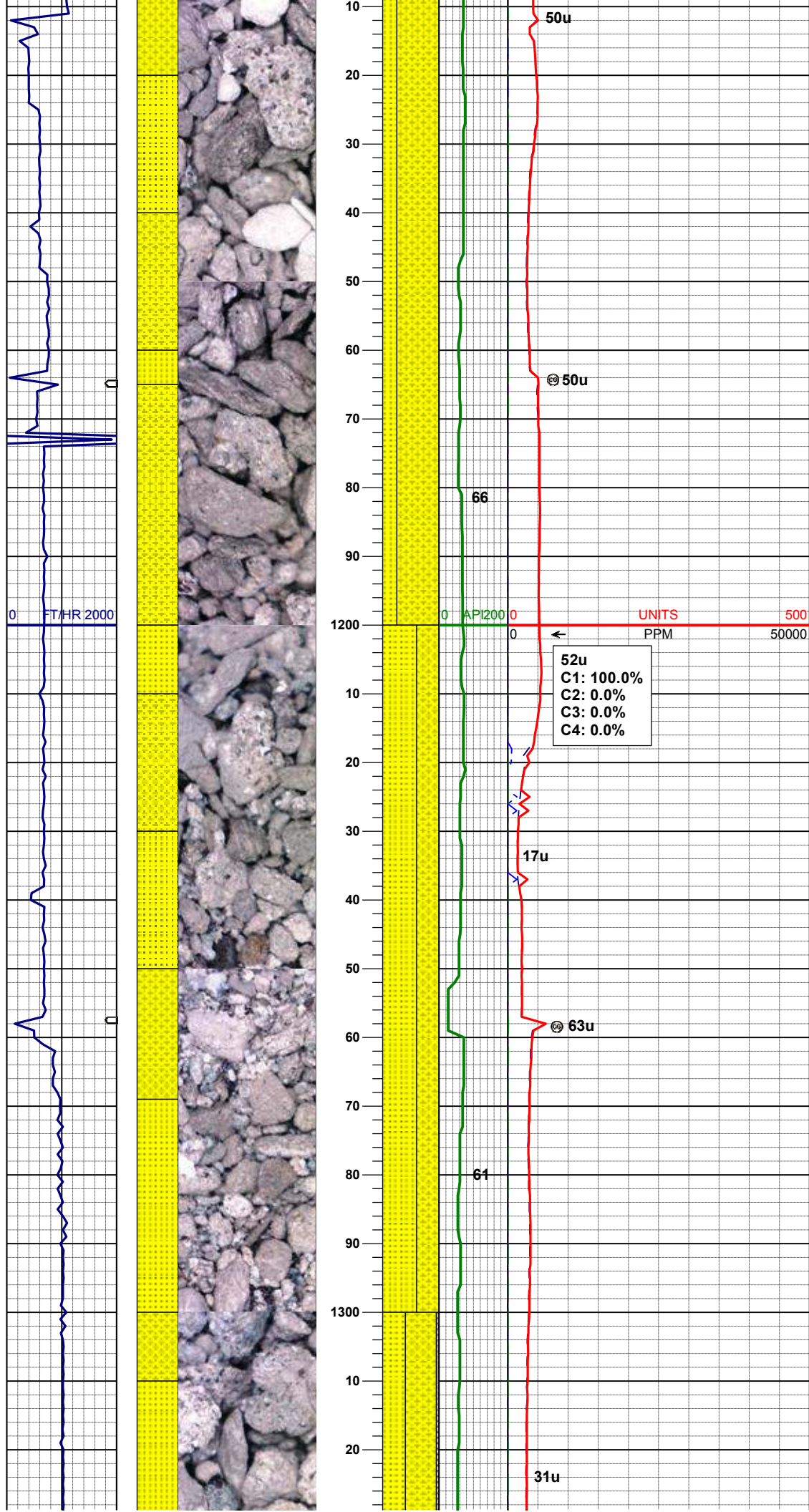
MD 926'
INC 0.3°
AZM 70.1°
TVD 926.00'

SHYSS: lt gy - wh, s&p, f gr, sbang - sbrnrd, mod srt, occ phlog, arg cmt
SS: wh-trnsl, s&p, f gr, sbang-sbrnrd, mod srt, tr phlog, arg cmt
SLTYSH: lt gy, sft - mod firm, sbblky, occ plty, arg-rthy mtx, noncalc

WT IN 8.70/ OUT 8.70
VIS IN 27/ OUT 27

44u
C1: 96.8%
C2: 1.9%
C3: 0.9%
C4: 0.4%

SHYSS: lt gy - wh, s&p, f gr, sbang - sbrnrd, mod srt, occ phlog, arg cmt
SS: wh-trnsl, s&p, f gr, sbang-sbrnrd, mod srt, tr phlog, arg cmt
SLTYSH: lt gy, sft - mod firm, sbblky, occ plty, arg-rthy mtx, noncalc

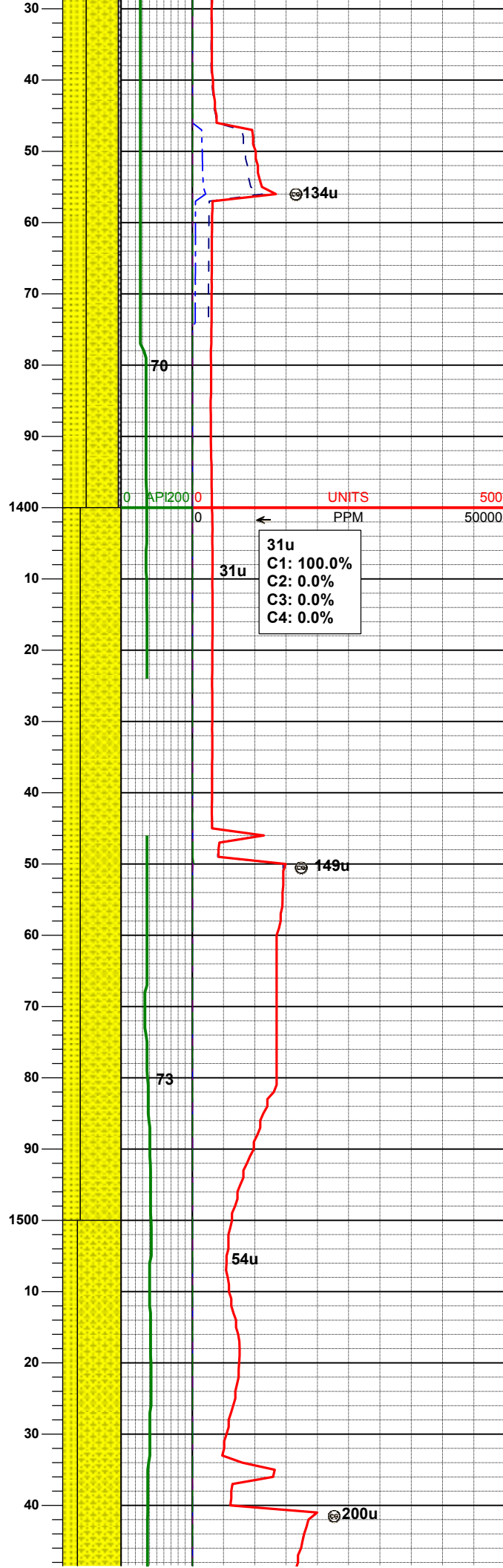
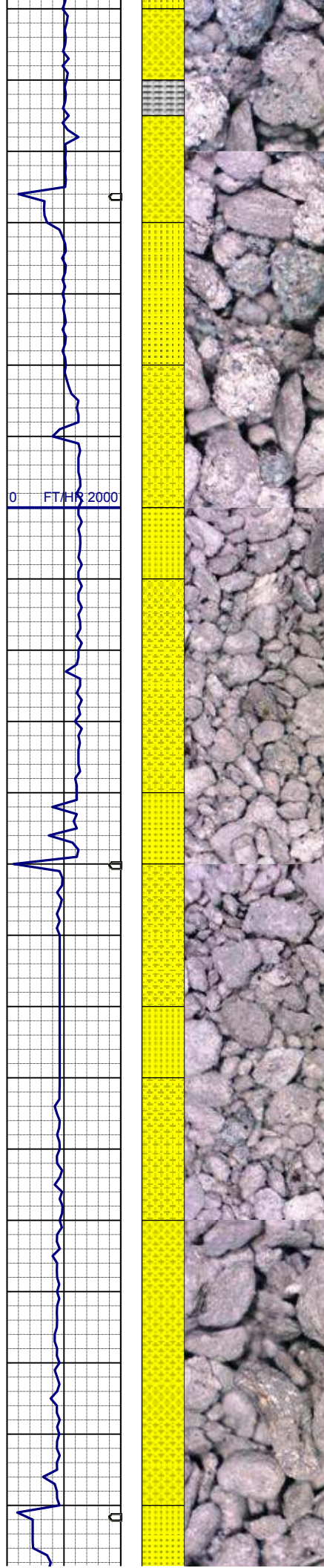


SHYSS: lt gy - wh, s&p, f gr, sbang -
sbrnidd, mod srt, occ phlog, arg cmt
SS: wh-trnsl, s&p, f gr, sbang-sbrnidd,
mod srt, tr phlog, arg cmt, t sltysh

MD	1209'
INC	0.3°
AZM	13.8°
TVD	1208.99'

SS: wh-trnsl, s&p, f gr, sbang-sbrnidd,
mod srt, tr phlog, tr glau, arg cmt
SHYSS: lt gy - wh, s&p, f gr, sbang -
sbrnidd, mod srt, occ phlog, arg cmt

WT IN 8.60/ OUT 8.60
VIS IN 27/ OUT 27



SHYSS: lt gy - wh, s&p, f gr, sbang -
sbrnnd, mod srt, occ phlog, arg cmt
SS: wh-trnsl, s&p, f gr, sbang-sbrnnd,
mod srt, tr phlog tr glau, arg cmt
SLTYSH: lt to dk gy, sft - mod firm,
sbbiky, occ plty, arg-rthy mtx, noncalc

SHYSS: lt gy - wh, s&p, f gr, sbang -
sbrnnd, mod srt, occ phlog, arg cmt
SS: wh-trnsl, s&p, f gr, sbang-sbrnnd,
mod srt, tr phlog tr glau, arg cmt

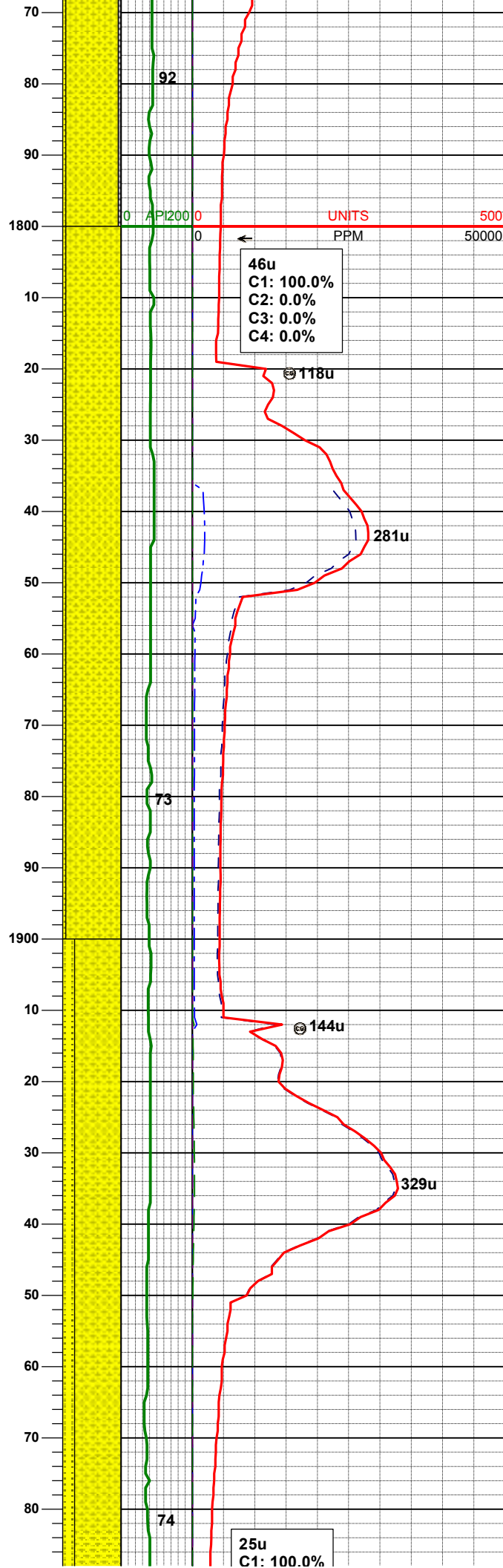
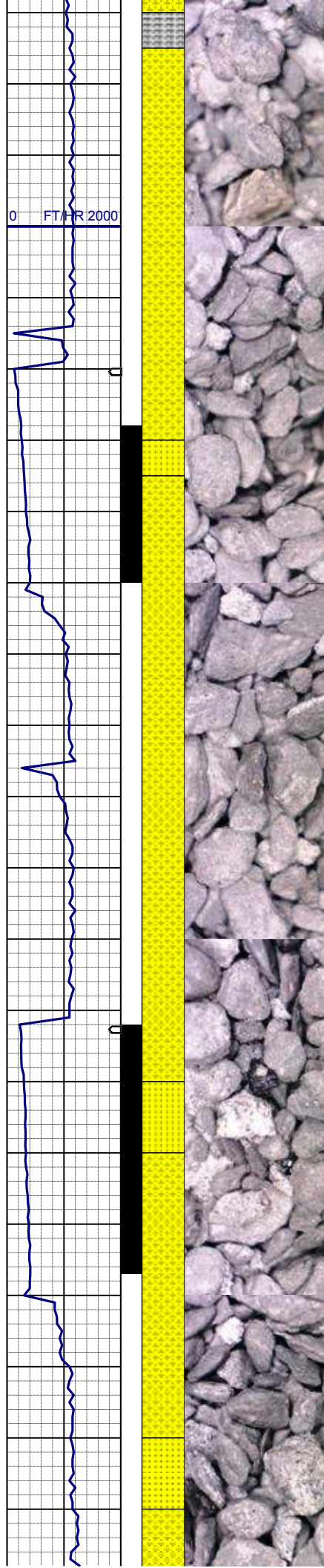
MD	1493'
INC	0.3°
AZM	27.2°
TVD	1492.99'

SHYSS: lt gy - wh, s&p, f gr, sbang -
sbrnnd, mod srt, occ phlog, arg cmt

Mass spectrum plot showing relative intensity (%) vs m/z. The plot features a green line for the sample spectrum and a red line for the reference spectrum. The x-axis ranges from 10 to 60 m/z, and the y-axis ranges from 0 to 100% relative intensity. Key peaks are labeled: 54u (C1: 98.4%, C2: 0.8%, C3: 0.0%, C4: 0.8%), 41u, 234u, 47u, 269u, 126u, and 71. A yellow shaded region is present on the left side of the plot.

SHYSS: lt gy - wh, s&p, f gr, sbang -
sbrndd, mod srt, occ phlog, arg cmt
SS: wh-trnsl, s&p, f gr, sbang-sbrndd,
mod srt, tr phlog, arg cmt
SLTYSH: lt gy, sft - mod firm, sbblky,
occ plty, arg-rthy mtz, noncalc

SHYSS: lt gy - wh, s&p, f gr, sbang -
sbrnrd, mod srt, occ phlog, arg cmt
SS: wh-trnsl, s&p, f gr, sbang-sbrnrd,
mod srt, tr phlog, arg cmt
SLTYSH: lt gy, sft - mod firm, sbblky,
occ plty, arg-rthy mt, noncalc



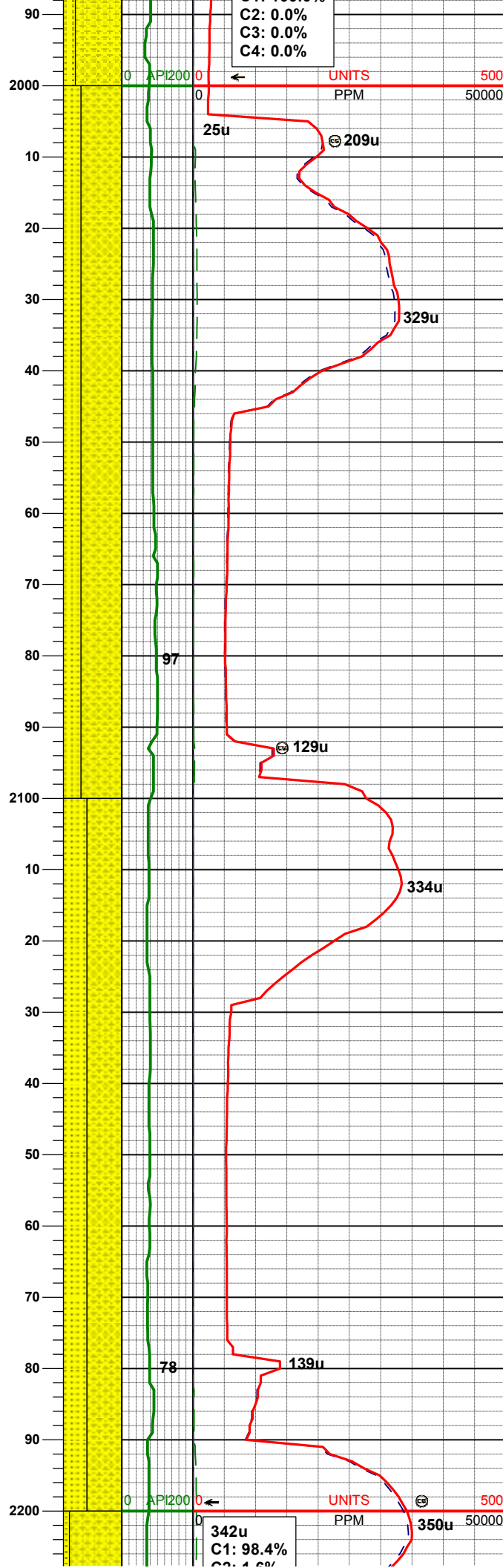
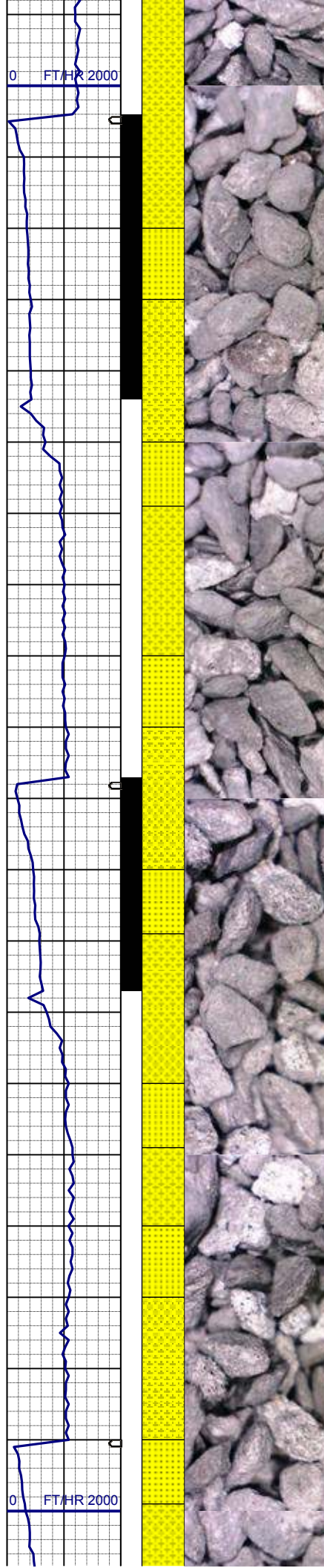
INC 0.5°
AZM 7.5°
TVD 1770.98'

SHYSS: lt gy - wh, s&p, f gr, sbang -
sbrnnd, mod srt, occ phlog, arg cmt
SS: wh-trnsl, s&p, f gr, sbang-sbrnnd,
mod srt, tr phlog, arg cmt, tr sltysh

MD 1863'
INC 2.4°
AZM 51.3°
TVD 1862.95'

SHYSS: lt gy - wh, s&p, f gr, sbang -
sbrnnd, mod srt, occ phlog, arg cmt
SS: wh-trnsl, s&p, f gr, sbang-sbrnnd,
mod srt, tr phlog, arg cmt, tr sltysh

MD 1955'
INC 4.2°
AZM 63.2°
TVD 1954.79'



C2: 0.0%
C3: 0.0%
C4: 0.0%

UNITS
PPM

SHYSS: lt gy - wh, s&p, f gr, sbang - sbrnrd, mod srt, occ phlog, arg cmt
SS: wh-trnsl, s&p, f gr, sbang-sbrnrd, mod srt, tr phlog, arg cmt, tr sltysh

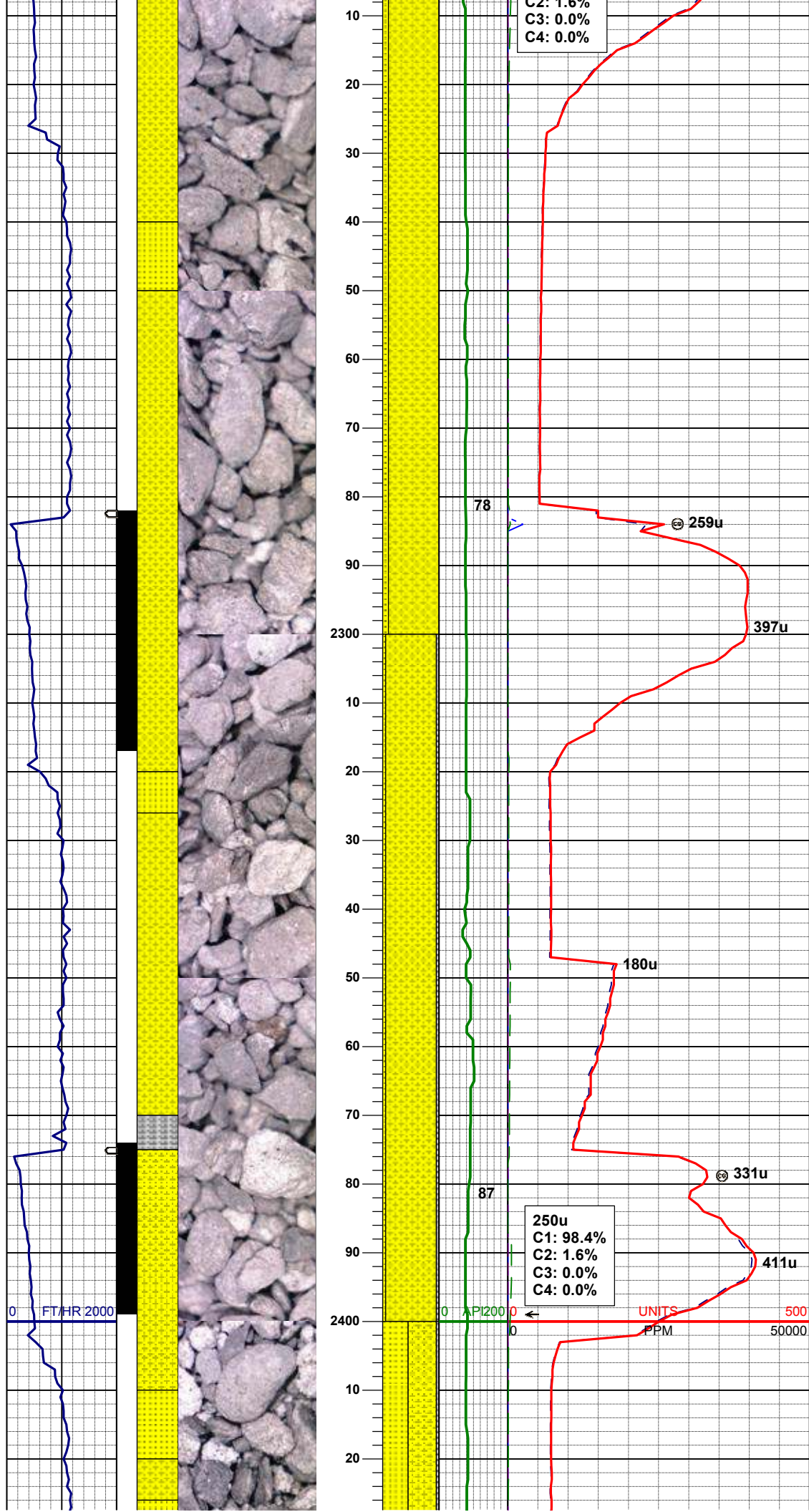
MD 2048'
INC 7.1°
AZM 56.3°
TVD 2047.33'

MD 2141'
INC 8.6°
AZM 65.5°
TVD 2139.46'

SHYSS: lt gy - wh, s&p, f gr, sbang - sbrnrd, mod srt, occ phlog, arg cmt
SS: wh-trnsl, s&p, f gr, sbang-sbrnrd, mod srt, tr phlog, arg cmt, tr sltysh

C1: 98.4%
C2: 1.6%

UNITS
PPM



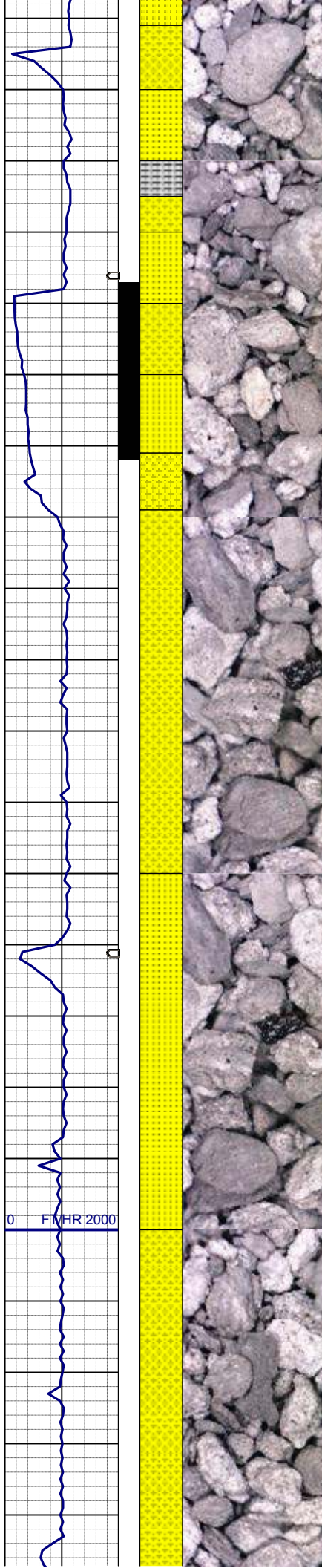
MD 2233'
INC 10.6°
AZM 62.2°
TVD 2230.17'

SHYSS: lt gy - wh, s&p, f gr, sbang - sbrnnd, mod srt, occ phlog, arg cmt
SS: wh-trnsl, s&p, f gr, sbang-sbrnnd, mod srt, tr phlog, arg cmt, tr sltysh

MD 2325'
INC 12.1°
AZM 56.7°
TVD 2320.37'

SHYSS: lt gy - wh, s&p, f gr, sbang - sbrnnd, mod srt, occ phlog, arg cmt
SS: wh-trnsl, s&p, f gr, sbang-sbrnnd, mod srt, tr phlog, arg cmt
SLTYSH: lt gy, sft - mod firm, sbblky, occ plty, arg-rthy mtz, noncalc

MD 2418'
INC 12.9°
AZM 58.3°
TVD 2411.17'



SHYSS: lt gy - wh, s&p, f gr, sbang -
sbrndd, mod srt, occ phlog, arg cmt
SS: wh-trnsl, s&p, f gr, sbang-sbrndd,
mod srt, tr phlog, arg cmt
SLTYSH: lt gy, sft - mod firm, sbblky,
occ plty, arg-rthy mtz, noncalc

WT IN 8.75/ OUT 8.75
VIS IN 28/ OUT 28

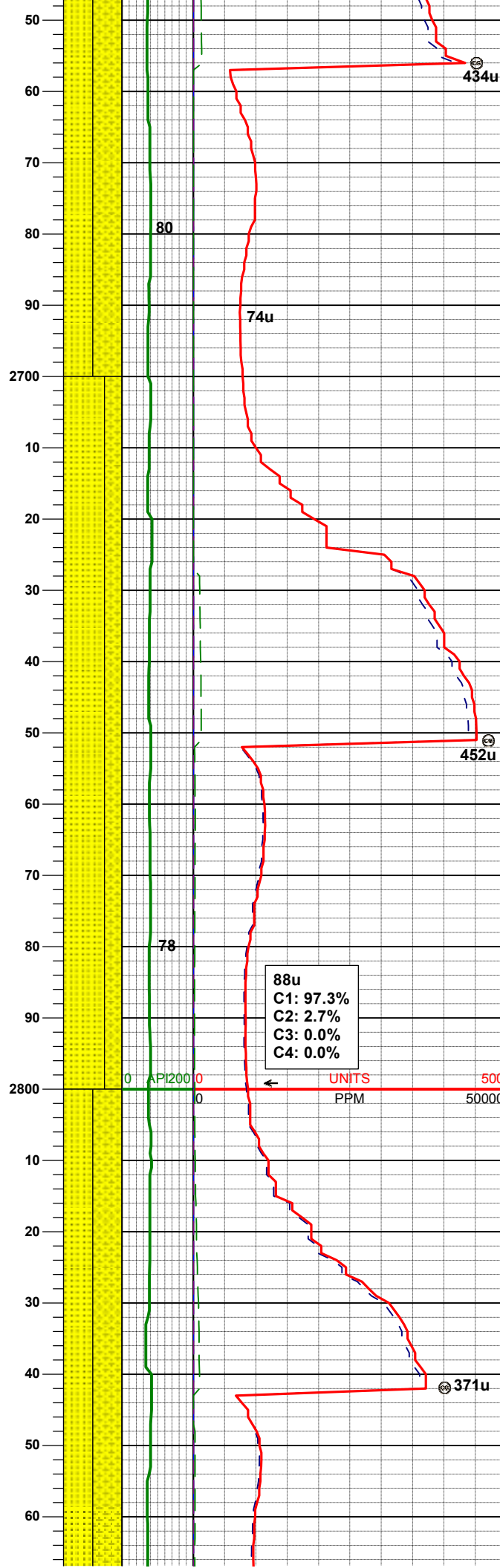
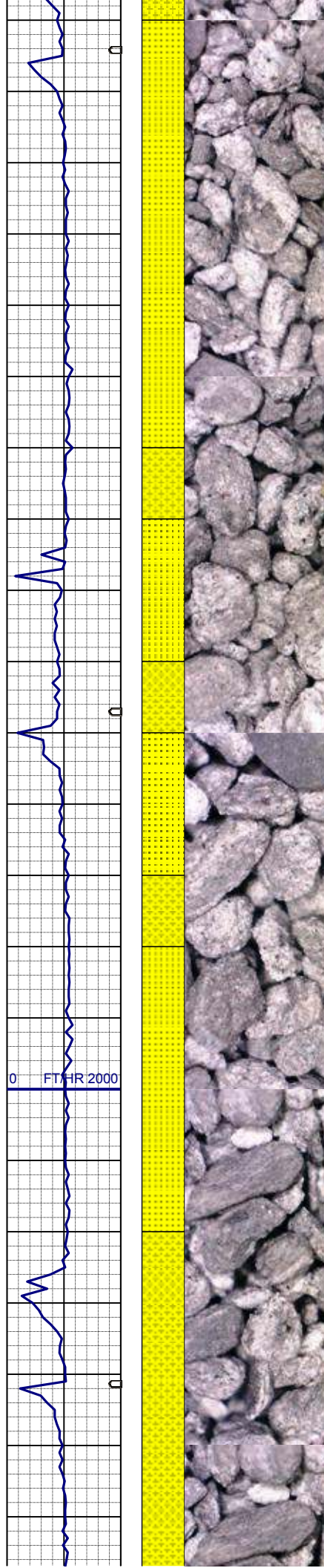
MD	2511'
INC	14.3°
AZM	58.3°
TVD	2501.56'

SHYSS: lt gy - wh, s&p, f gr, sbang -
sbrndd, mod srt, occ phlog, arg cmt
SS: wh-trnsl, s&p, f gr, sbang-sbrndd,
mod srt, tr phlog, arg cmt

69u
C1: 96.7%
C2: 3.3%
C3: 0.0%
C4: 0.0%

MD	2605'
INC	14.5°
AZM	59.0°
TVD	2592.60'

SHYSS: lt gy - wh, s&p, f gr, sbang -



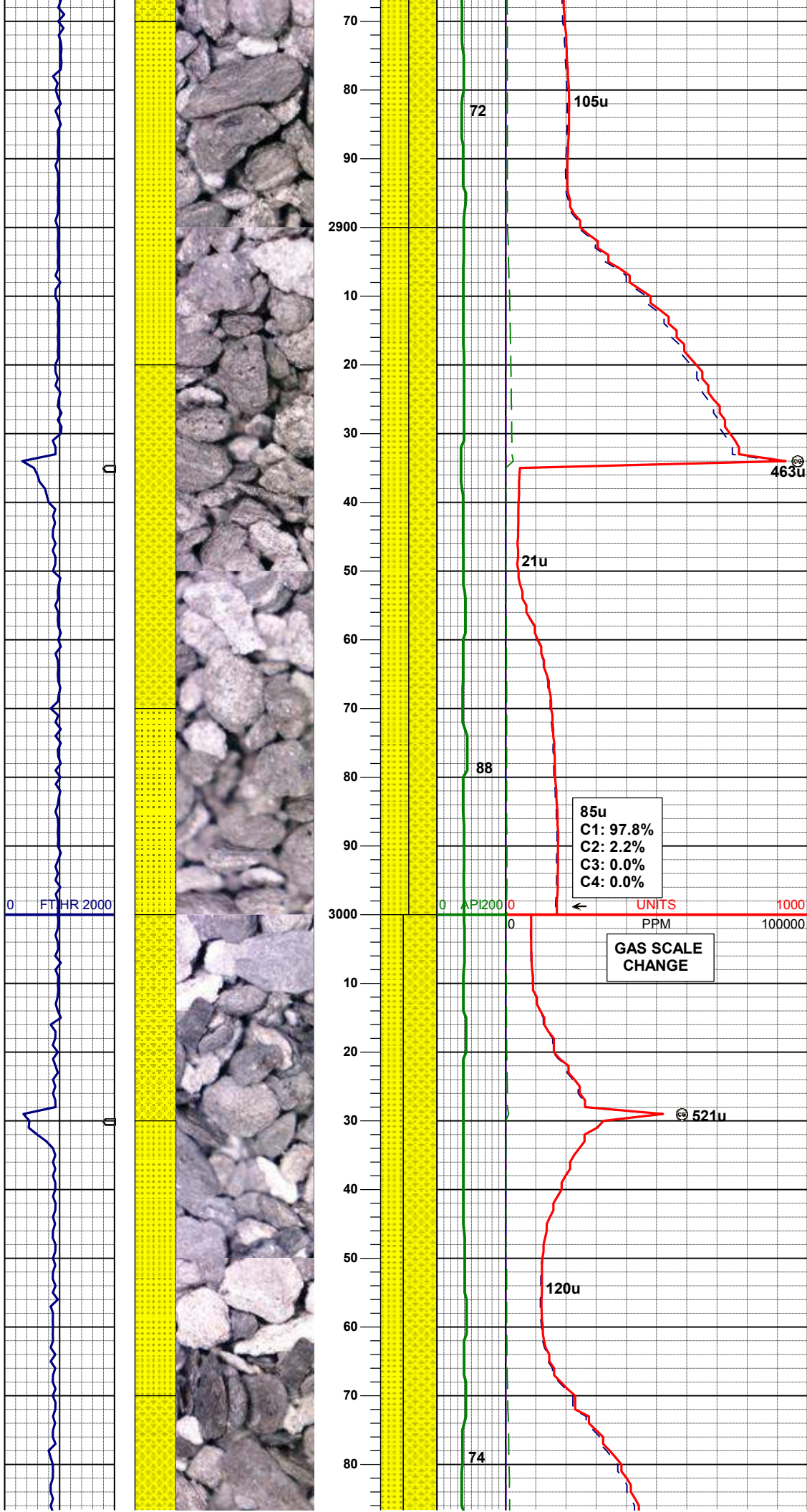
sbrnidd, mod srt, occ phlog, arg cmt
SS: wh-trnsl, s&p, f gr, sbang-sbrnidd,
mod srt, tr phlog, arg cmt

MD	2698'
INC	14.9°
AZM	59.3°
TVD	2682.56'

SS: wh-trnsl, s&p, f gr, sbang-sbrnidd,
mod srt, tr phlog, arg cmt, tr sltysh
SHYSS: lt gy - wh, s&p, f gr, sbang -
sbrnidd, mod srt, occ phlog, arg cmt

MD	2792'
INC	14.5°
AZM	57.8°
TVD	2773.48'

SS: wh-trnsl, s&p, f gr, sbang-sbrnidd,
mod srt, tr phlog, arg cmt, tr sltysh
SHYSS: lt gy - wh, s&p, f gr, sbang -
sbrnidd, mod srt, occ phlog, arg cmt



MD 2885'
INC 14.3°
AZM 57.8°
TVD 2863.56'

SS: wh-trnsl, s&p, f gr, sbang-sbrnnd, mod srt, tr phlog, arg cmt, tr sltysh
SHYSS: lt gy - wh, s&p, f gr, sbang - sbrnnd, mod srt, occ phlog, arg cmt

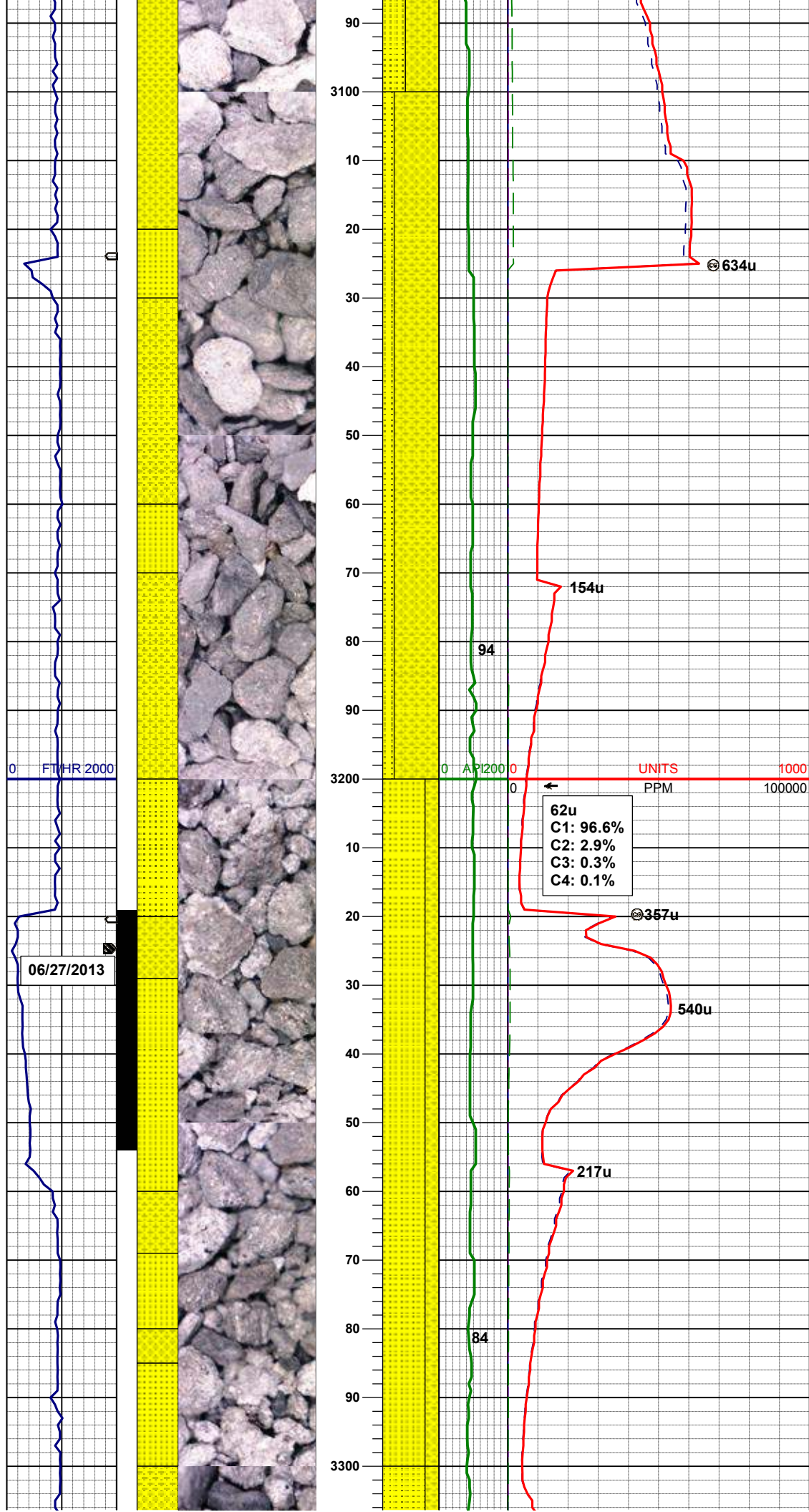
MD 2980'
INC 13.4°
AZM 56.0°
TVD 2955.80'

85u
C1: 97.8%
C2: 2.2%
C3: 0.0%
C4: 0.0%

GAS SCALE
CHANGE

SHYSS: lt gy - wh, s&p, f gr, sbang - sbrnnd, mod srt, occ phlog, arg cmt
SS: wh-trnsl, s&p, f gr, sbang-sbrnnd, mod srt, tr phlog, arg cmt, tr sltysh

MD 3075'
INC 11.8°
AZM 54.4°
TVD 3048.51'

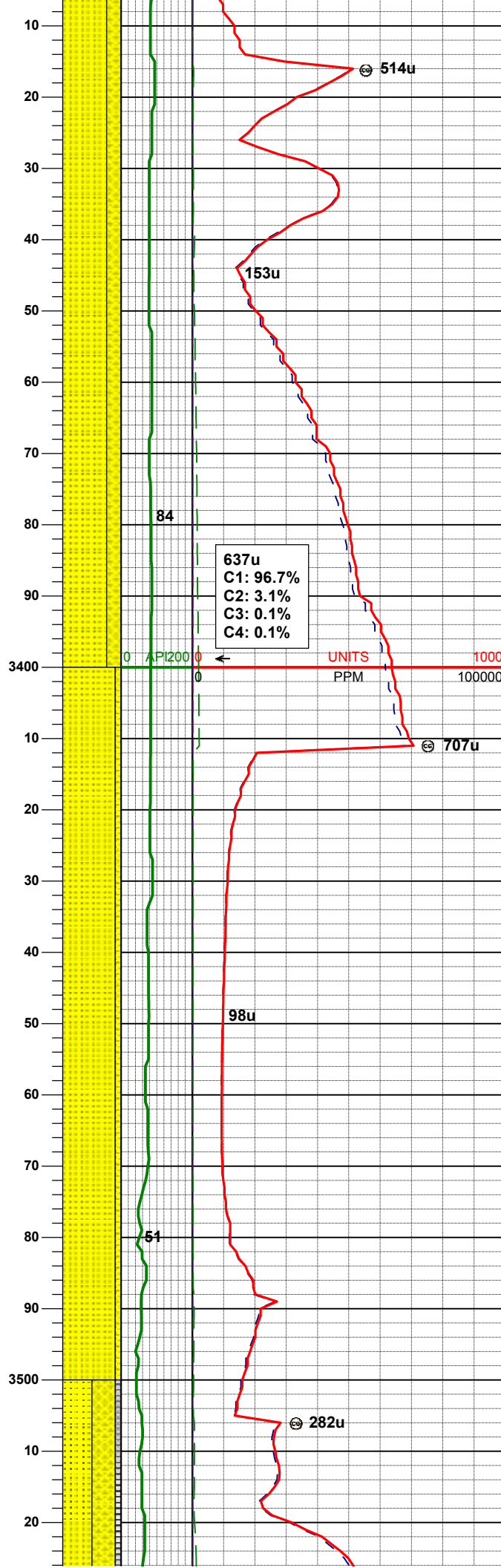
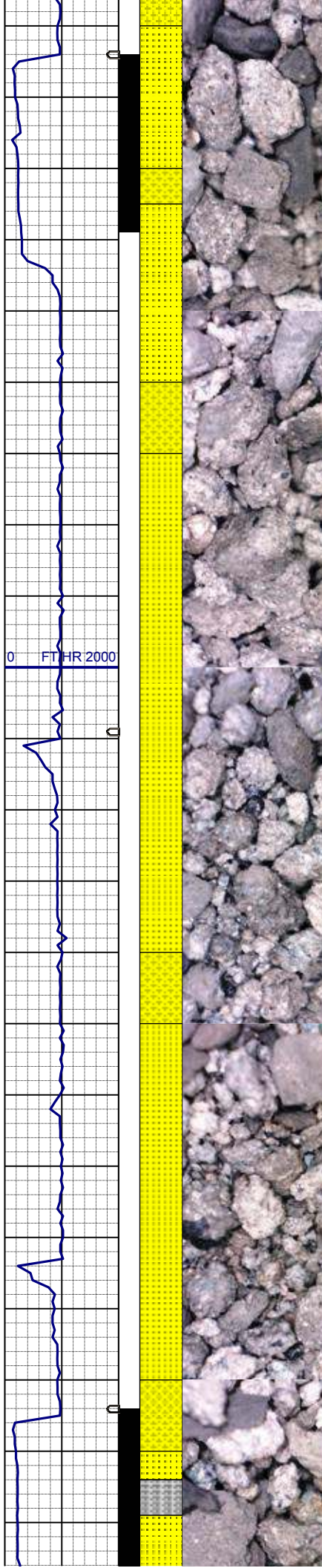


SHYSS: lt gy - wh, s&p, f gr, sbang - sbrnnd, mod srt, occ phlog, arg cmt
SS: wh-trnsl, s&p, f gr, sbang-sbrnnd, mod srt, tr phlog, arg cmt, tr sltysh

MD	3170'
INC	9.4°
AZM	54.2°
TVD	3141.88'

SS: wh-trnsl, s&p, f gr, sbang-sbrnnd, mod srt, tr phlog, arg cmt, tr sltysh
SHYSS: lt gy - wh, s&p, f gr, sbang - sbrnnd, mod srt, occ phlog, arg cmt

MD	3265'
INC	10.8°
AZM	52.7°
TVD	3235.41'

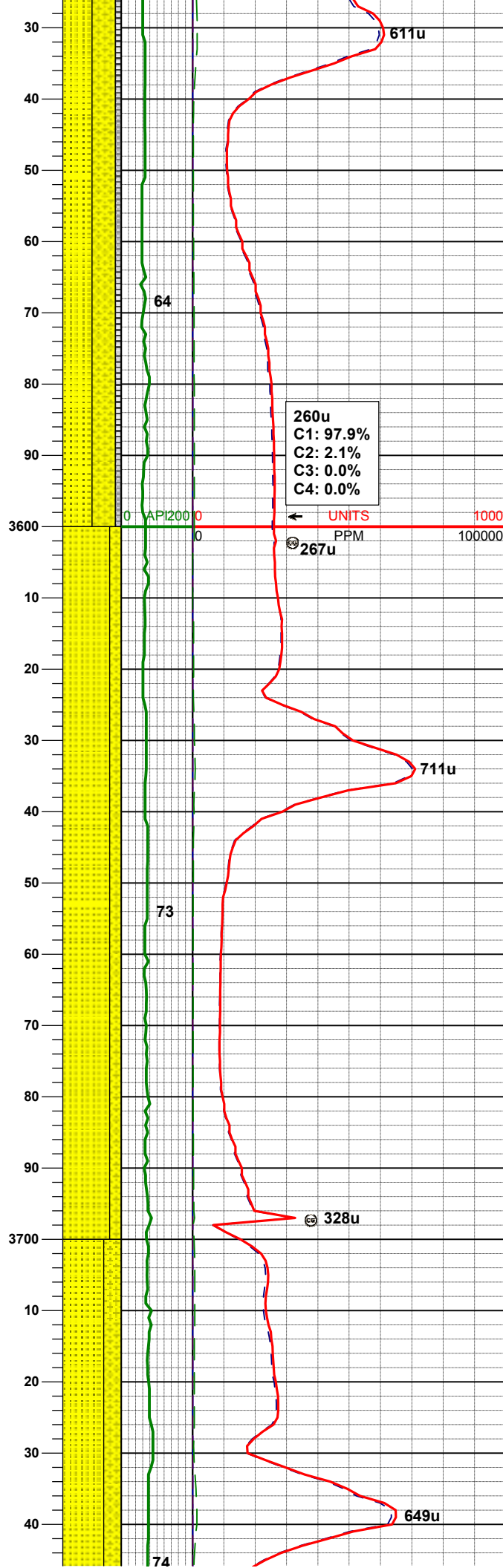
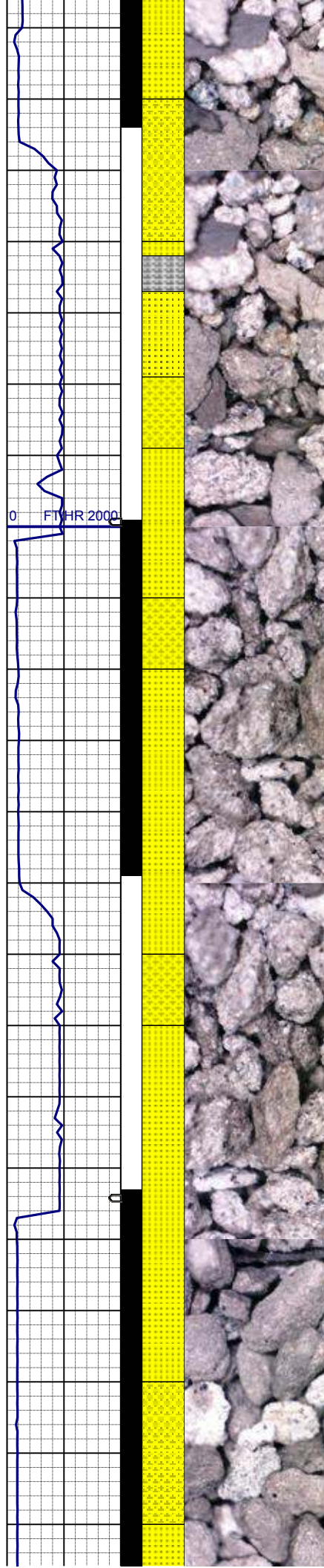


SS: wh-trnsl, s&p, f gr, sbang-sbrnrd, mod srt, tr phlog, arg cmt, tr glau
SHYSS: lt gy - wh, s&p, f gr, sbang - sbrnrd, mod srt, occ phlog, arg cmt

MD	3360'
INC	12.7°
AZM	52.5°
TVD	3328.41'

SS: wh-trnsl, s&p, f gr, sbang-sbrnrd, mod srt, tr phlog, arg cmt, tr glau
SHYSS: lt gy - wh, s&p, f gr, sbang - sbrnrd, mod srt, occ phlog, arg cmt

MD	3455'
INC	13.6°
AZM	52.5°
TVD	3420.92'



SS: wh-trnsl, s&p, modf gr, sbang -
sbrnnd, mod srt, tr phlog, abnt glau,
arg cmt
SHYSS: lt-m gy, s&p, f gr, sbang -
sbrnnd, mod srt, abnt glau, arg cmt
SLTYSH: dkgy, sft - mod firm, sbblky,
occ plty, arg-rthy mtx, noncalc

MD	3550'
INC	11.5°
AZM	56.0°
TVD	3513.65'

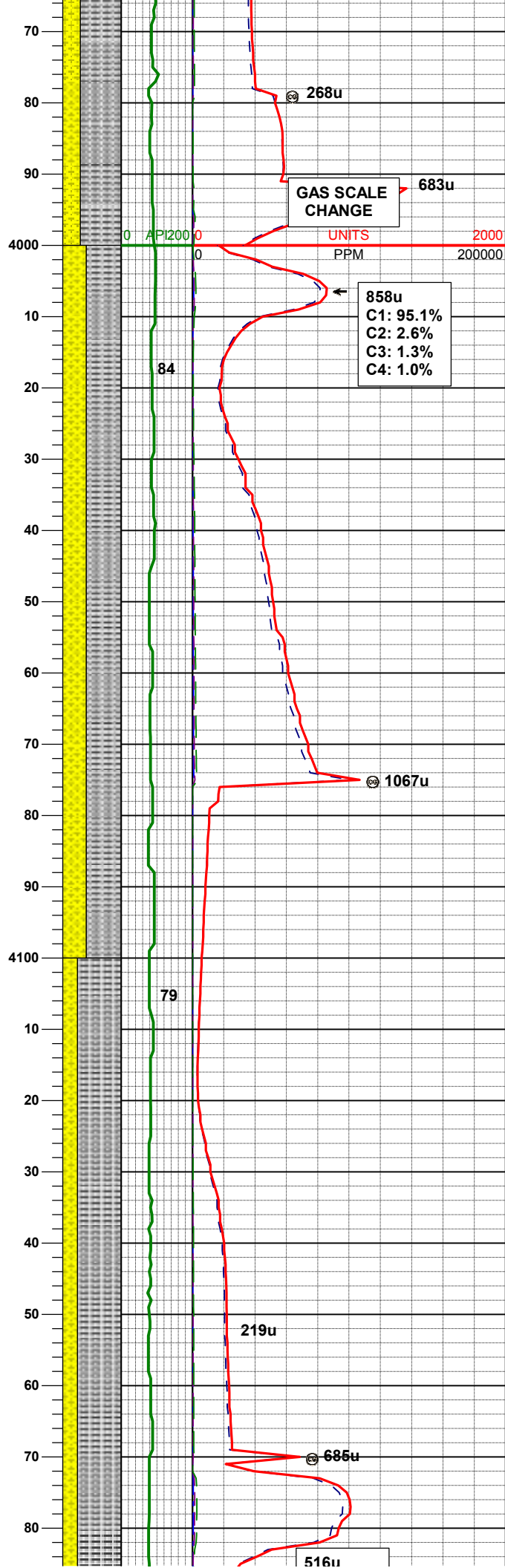
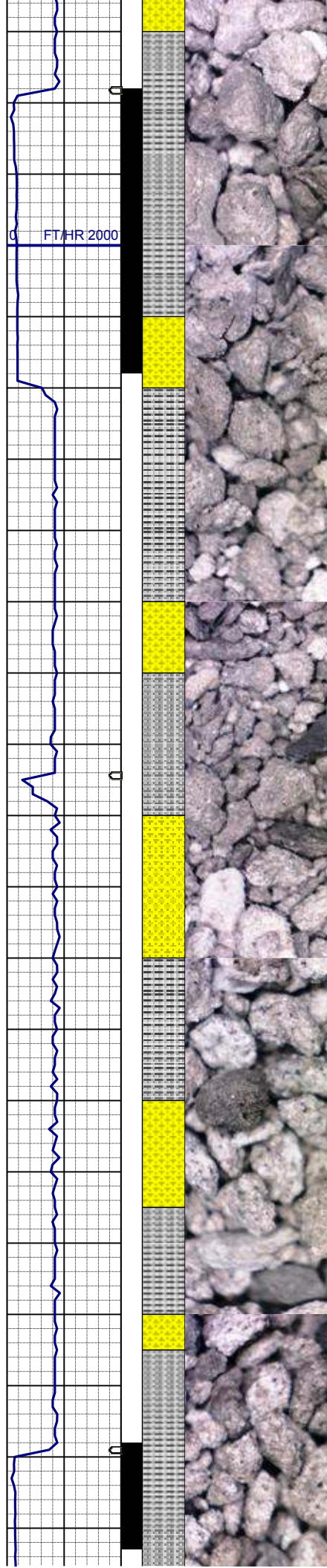
260u
C1: 97.9%
C2: 2.1%
C3: 0.0%
C4: 0.0%

← UNITS 1000
PPM 100000
267u

MD	3645'
INC	9.2°
AZM	56.7°
TVD	3607.09'

SS: wh-trnsl, s&p, f gr, sbang-sbrnnd,
mod srt, tr phlog, arg cmt, tr glau
SHYSS: lt gy - wh, s&p, f gr, sbang -
sbrnnd, mod srt, occ phlog, arg cmt, tr
siltysh

SS: wh-trnsl, s&p, f gr, sbang-sbrnnd,
mod srt, tr phlog, arg cmt, occ glau



MD	4024'
INC	1.2°
AZM	186.6°
TVD	3984.71'

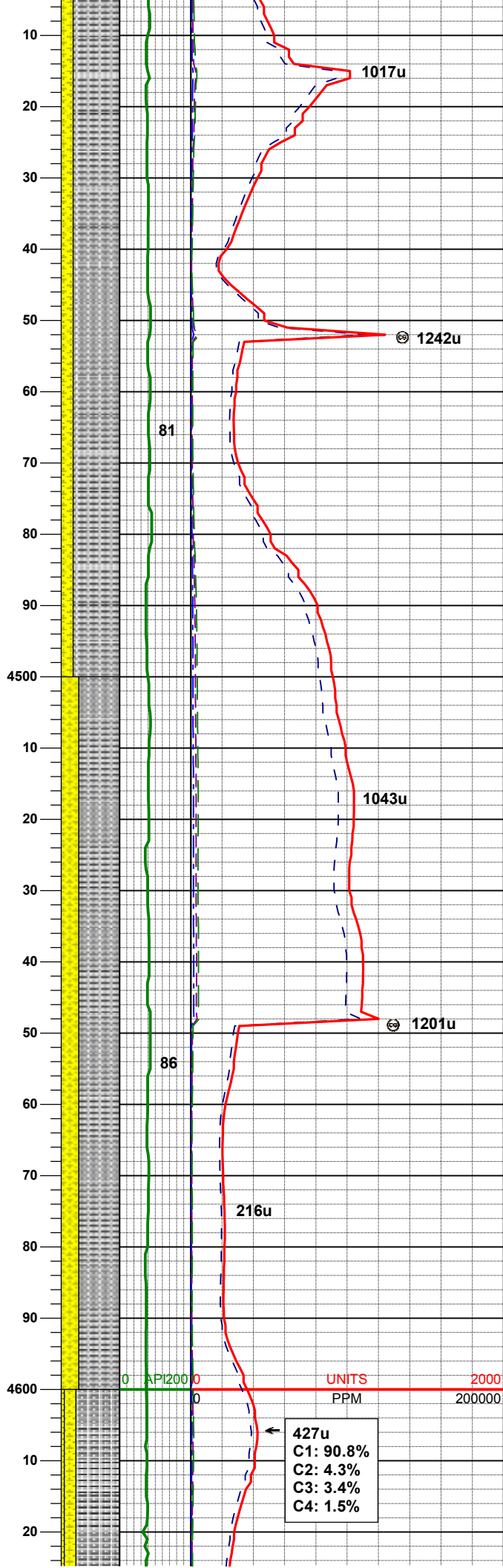
SLTYSH: m-dkgy, occ brn,sft - mod firm, sbbkly, occ plty, arg-rthy mtx, noncalc
SHYSS: lt gy - wh, s&p, f gr, sbang - sbrnnd, mod srt, occ phlog, arg cmt, tr ss

WT IN 8.80/ OUT 8.80
VIS IN 27/ OUT 27

MD	4119'
INC	1.0°
AZM	159.2°
TVD	4079.70'

SLTYSH: m-dkgy, occ brn,sft - mod firm, sbbkly, occ plty, arg-rthy mtx, noncalc
SHYSS: lt gy - wh, s&p, f gr, sbang - sbrnnd, mod srt, occ phlog, arg cmt, tr ss

TVD 4363.67'



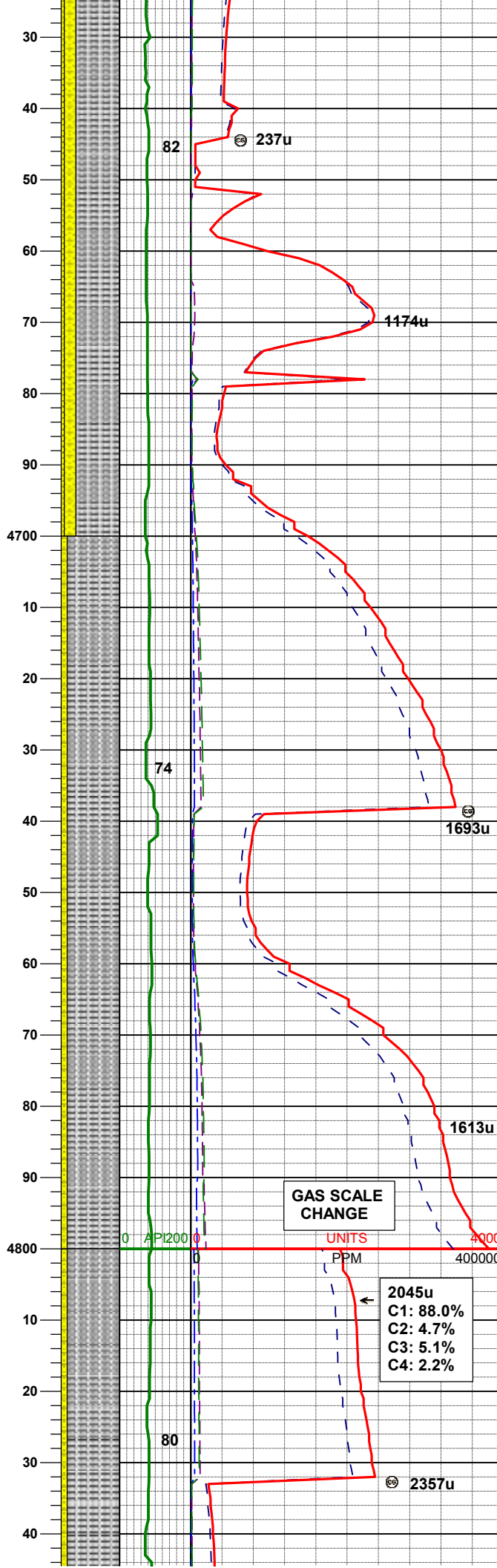
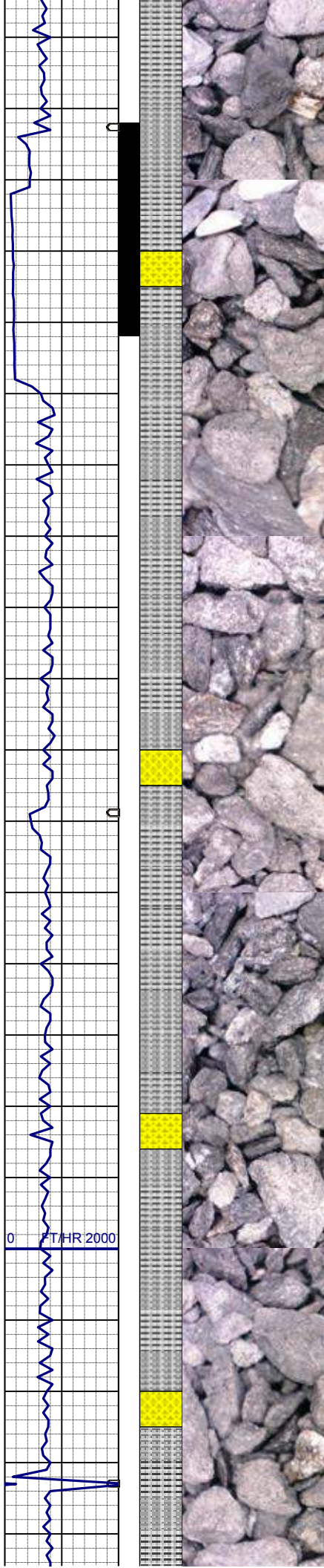
SLTYSH: m-dkgy, occ brn,sft - mod firm, sbbiky, occ plty, arg-rthy mtx, noncalc
SHYSS: lt gy - wh, s&p, f gr, sbang - sbrnnd, mod srt, occ phlog, arg cmt, tr ss

MD	4498'
INC	1.3°
AZM	322.3°
TVD	4458.65'

SLTYSH: m-dkgy, occ brn,sft - mod firm, sbbiky, occ plty, arg-rthy mtx, noncalc
SHYSS: lt gy - wh, s&p, f gr, sbang - sbrnnd, mod srt, occ phlog, arg cmt, tr ss

MD	4593'
INC	2.4°
AZM	332.3°
TVD	4553.60'

427u
C1: 90.8%
C2: 4.3%
C3: 3.4%
C4: 1.5%



SLTYSH: m-dkgy, occ brn,sft - mod firm, sbbiky, occ plty, arg-rthy mtx, noncalc
 SHYSS: lt gy - wh, s&p, f gr, sbang - sbrnnd, mod srt, occ phlog, arg cmt
 SS: wh-trnsl, s&p, f gr, sbang-sbrnnd, mod srt, tr phlog, arg cmt, tr glau

MD	4688'
INC	2.1°
AZM	305.4°
TVD	4648.53'

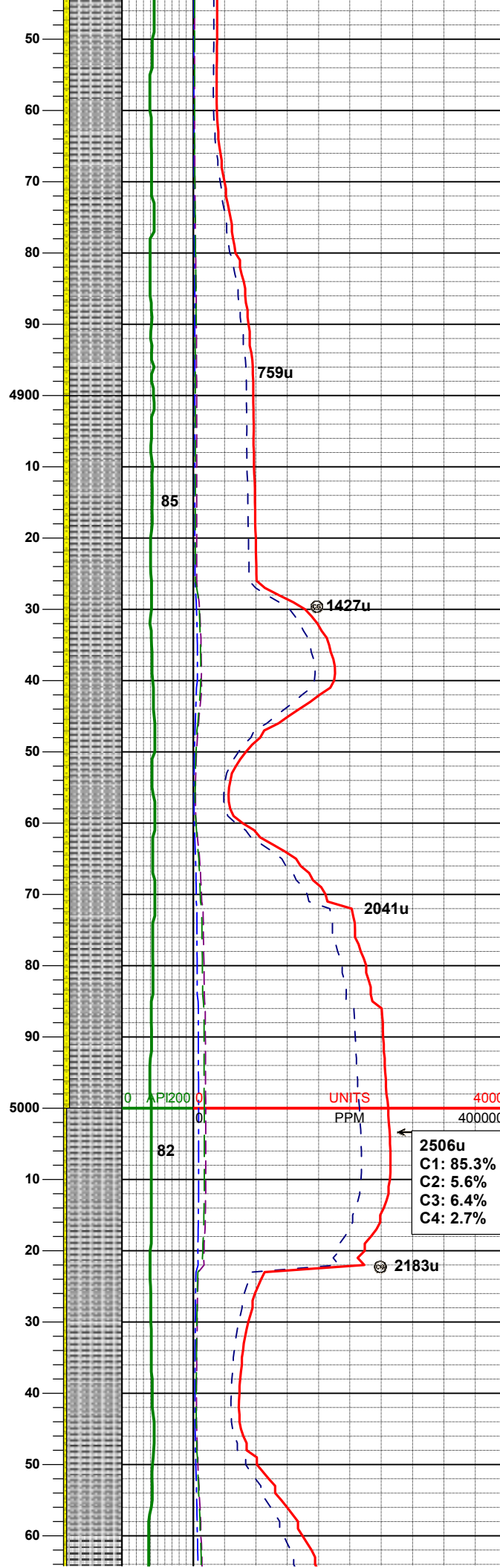
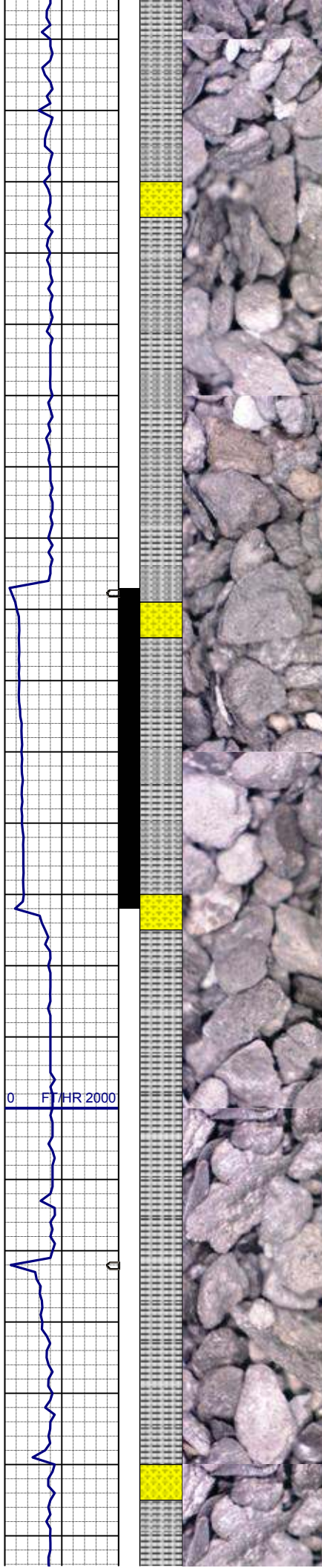
SLTYSH: m-dkgy, occ brn,sft - mod firm, sbbiky, occ plty, arg-rthy mtx, noncalc
 SHYSS: lt gy - wh, s&p, f gr, sbang - sbrnnd, mod srt, occ phlog, arg cmt

MD	4783'
INC	2.5°
AZM	316.5°
TVD	4743.46'

GAS SCALE CHANGE

UNITS
PPM

2045u
 C1: 88.0%
 C2: 4.7%
 C3: 5.1%
 C4: 2.2%



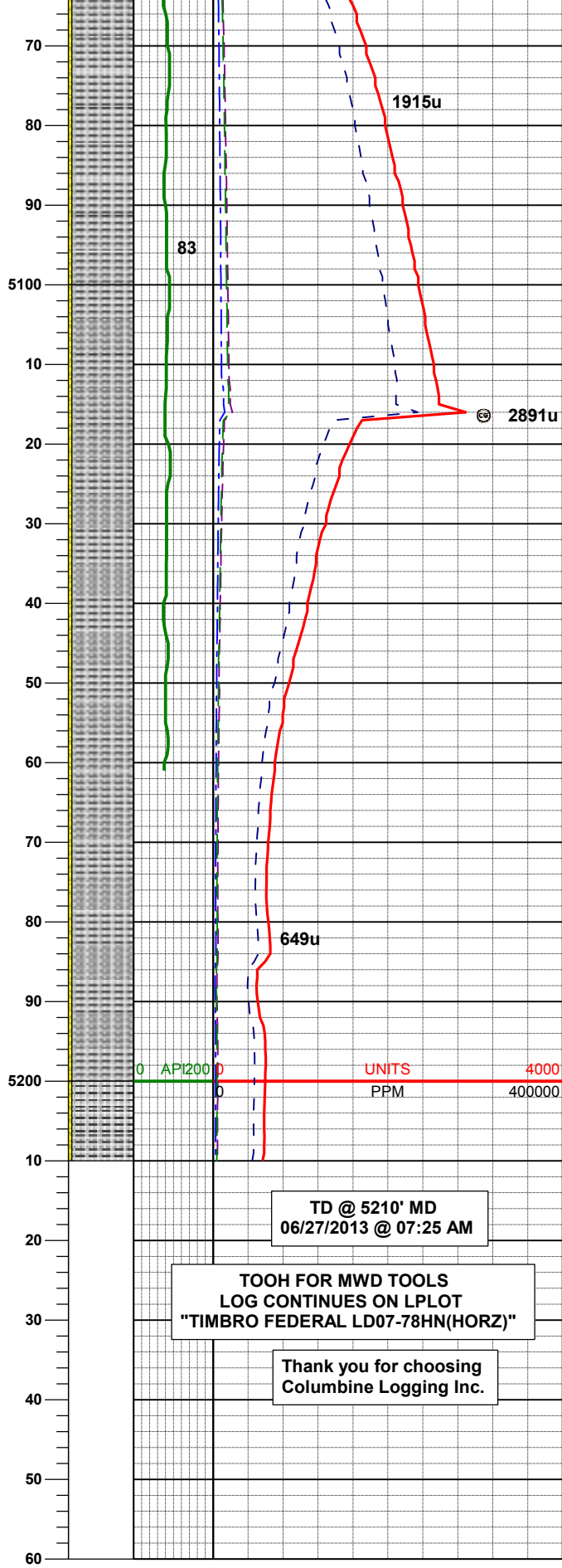
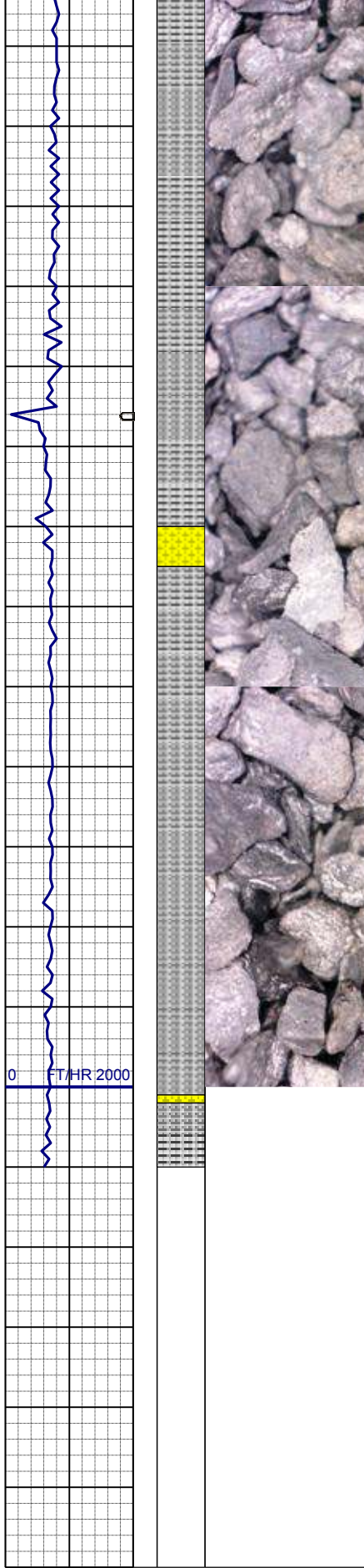
SLTYSH: m-dkgy, occ brn,sft - mod
firm, sbbiky, occ plty, arg-rthy mtx,
noncalc
SHYSS: lt gy - wh, s&p, f gr, sbang -
sbrnnd, mod srt, occ phlog, arg cmt

MD	4878'
INC	2.0°
AZM	310.7°
TVD	4838.38'

SLTYSH: m-dkgy, occ brn,sft - mod
firm, sbbiky, occ plty, arg-rthy mtx,
noncalc
SHYSS: lt gy - wh, s&p, f gr, sbang -
sbrnnd, mod srt, occ phlog, arg cmt

MD	4972'
INC	1.4°
AZM	189.2°
TVD	4932.36'

SLTYSH: m-dkgy, occ brn,sft - mod
firm, sbbiky, occ plty, arg-rthy mtx,
noncalc
SHYSS: lt gy - wh, s&p, f gr, sbang -
sbrnnd, mod srt, occ phlog, arg cmt



MD 5067'
INC 1.2°
AZM 173.2°
TVD 5027.34'

SLTYSH: m-dkgy, occ brn, sft - mod
firm, sbbky, occ plty, arg-rthy mtx,
noncalc
SHYSS: lt gy - wh, s&p, f gr, sbang -
sbrnrd, mod srt, occ phlog, arg cmt

MD 5162'
INC 1.2°
AZM 154.6°
TVD 5122.32'

TD @ 5210' MD
06/27/2013 @ 07:25 AM

TOOH FOR MWD TOOLS
LOG CONTINUES ON L PLOT
"TIMBRO FEDERAL LD07-78HN(HORZ)"

Thank you for choosing
Columbine Logging Inc.