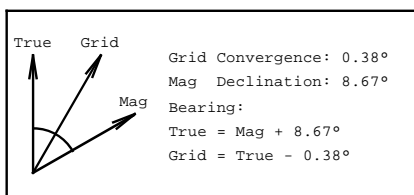


**5D Plan Report****ANADARKO**

Field Name: *WATTENBURG_ANADARKO_CO_NAD83*
Site Name: *SCOTT PAD*
Well Name: *SCOTT 26N-32HZ*
Plan: *PLAN 1*





Plan Data for SCOTT 26N-32HZ

Field: WATTENBURG_ANADARKO_CO_NAD83

Map Unit: USft

Vertical Reference Datum (VRD): Mean Sea Level
Projected Coordinate System: NAD83 / Colorado North (ftUS)

Site: SCOTT PAD

Unit: USFeet

TVD Reference:

Company Name: ANADARKO

Position:

Northing: 1304761.00USft Latitude: 40.168447°

Easting: 3165512.71USft Longitude: -104.907740°

North Reference: True

Grid Convergence: 0.38°

Elevation Above VRD: 4874.00USft

Slot: SCOTT 26N-32HZ

Position:

Offset is from Site centre

+N/-S: -0.73USft Northing: 1304760.67USft Latitude: 40.168445°

+E/-W: 60.09USft Easting: 3165572.80USft Longitude: -104.907525°

Elevation Above VRD: 4874.00USft

Well: SCOTT 26N-32HZ

Type: Main-Well

File Number:

Vertical Section: Position offset of origin from Slot centre:

+N/-S: 0.73USft

Azimuth: 360.07°

+E/-W: -60.09USft

Magnetic Parameters:

Model: Field Strength: Declination: Dip: Date:

BGGM 52741(nT) 8.67° 66.76° 2013-07-30

Plan Point Information:

DogLeg Severity Unit: °/100.00ft

Position offsets from Slot centre

MD	Inc	Az	TVD	+N/-S	+E/-W	VSec	DLS	Toolface	Build	Turn
(USft)	(°)	(°)	(USft)	(USft)	(USft)	(USft)	(DLSU)	(°)	(DLSU)	(DLSU)
0.00	0.00	0.00	0.00	0.00	0.00	0.00	0.00	0.0R	0.00	0.00
2100.00	0.00	0.00	2100.00	0.00	0.00	0.00	0.00	0.0R	0.00	0.00
2751.18	13.02	122.61	2745.58	-39.71	62.07	-39.63	2.00	122.6R	2.00	0.00
6070.44	13.02	122.61	5979.47	-442.79	692.18	-441.94	0.00	0.0R	0.00	0.00
6721.62	0.00	0.00	6625.05	-482.50	754.25	-481.58	2.00	180.0R	-2.00	0.00
7625.29	90.37	0.07	7198.00	94.13	755.00	95.06	10.00	0.1R	10.00	0.00
14793.65	90.37	0.07	7152.00	7262.34	764.36	7263.27	0.00	0.0R	0.00	0.00

Target Set Information:

Name: 26N

Name TVD Lat Long

(USft) (°) (°)

PBHL 7152.00 40.188381 -104.904789

Formation Point Information:

Name TVD Elevation MD

(USft) (USft) (USft)

SHARON SPRINGS 7106.00 -2215.00 7292.40

NIOBRARA A 7147.00 -2256.00 7378.02

NIOBRARA B 7165.00 -2274.00 7426.18

Casing Point Information:

Name MD TVD

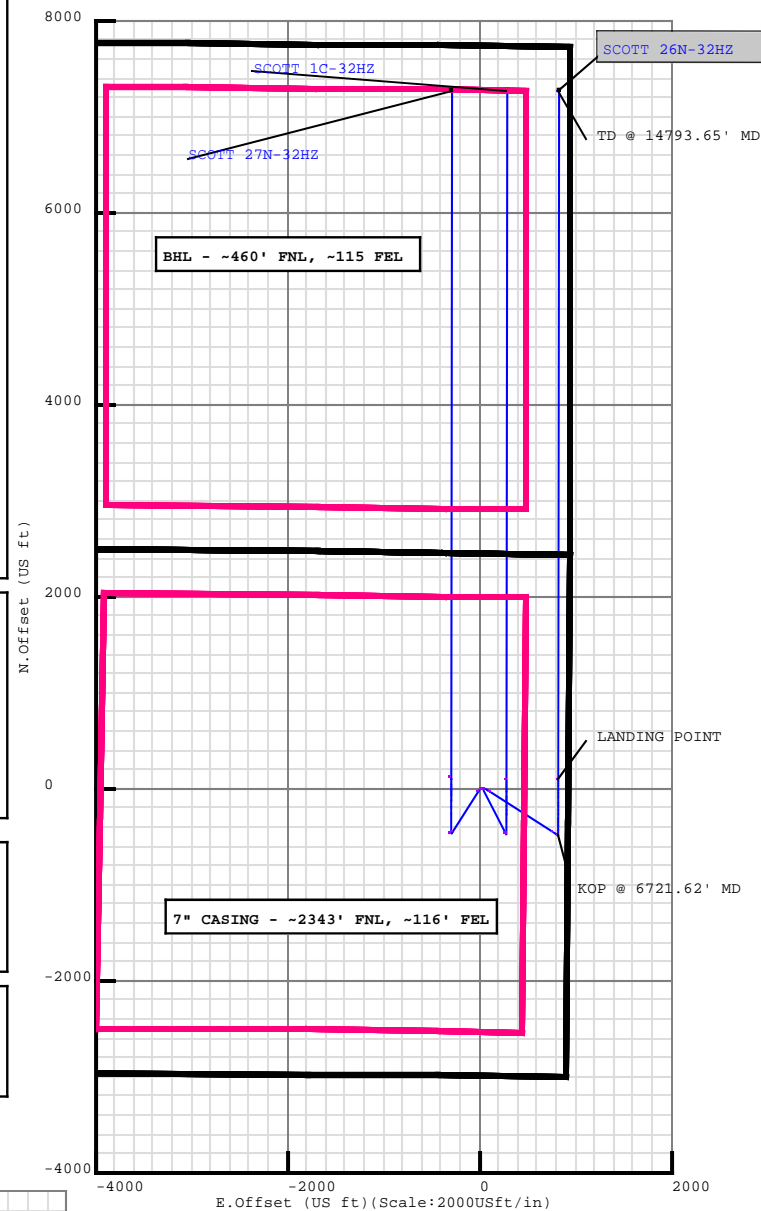
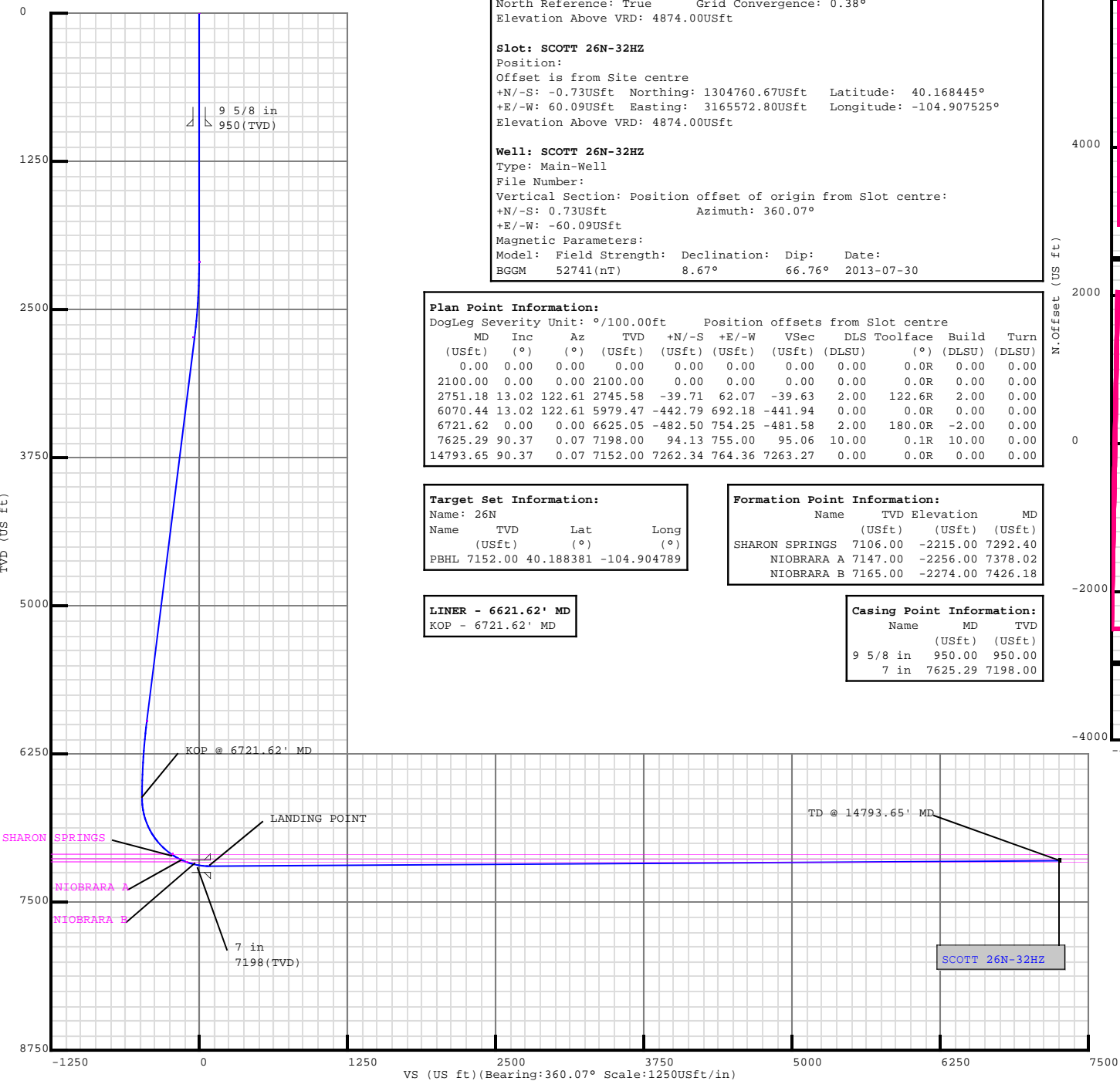
(USft) (USft)

9 5/8 in 950.00 950.00

7 in 7625.29 7198.00

LINER - 6621.62' MD

KOP - 6721.62' MD



Anadarko
Petroleum Corporation

Weatherford®

Plan Surveys for the SCOTT 26N-32HZ

Site Name SCOTT PAD	Units : US ft	North Reference : True	Convergence Angle : 0.38
	Position	Northing : 1304761.00 US ft	Latitude : 40.168447
		Easting : 3165512.71 US ft	Longitude : -104.907740
	Elevation above: 4874.00 US ft Comment :		
Slot Name SCOTT 26N-32HZ	Position (Offsets relative to Site Centre)		
	+N / -S : -0.73 US ft	Northing : 1304760.67 US ft	Latitude : 40.168445
	+E / -W : 60.09 US ft	Easting : 3165572.80 US ft	Longitude : -104.907525
	Slot TVD Reference : Ground Elevation Elevation above : 4874.00 US ft Comment :		
Well Name SCOTT 26N-32HZ	Type : Main well	UWI :	Plan : PLAN 1
	Rig Height <i>Drill Floor</i> : 17.00 US ft	Comment :	
	Relative to : 4891.00 US ft		
	Closure Distance : 7302.45 US ft	Closure Azimuth : 6.00826°	
	Vertical Section (Position of Origin Relative to Slot)		
	+N / -S : 0.73 US ft	+E / -W : -60.09 US ft	Az : 0.07°
	Magnetic Parameters		
	Model : BGGM	Field Strength : 52741.9nT	Dec : 8.67°
			Dip : 66.76°
			Date : 30/Jul/2013

Target Set**Name :** 26N**Number of Targets :** 1**Comment :**

TargetName:	Position (Relative to centre)			
PBHL	+N / -S : 7262.34US ft	Northing : 1312027.95 US ft	Latitude : 40°11'18.171600"	
Shape:	+E / -W : 764.36 US ft	Easting : 3166288.64US ft	Longitude : -104°54'17.240400"	
Cuboid	TVD (Drill Floor) : 7152.00 US ft			
	Orientation	Azimuth : 0.00°	Inclination : 0.00°	
	Dimensions	Length : 20.00 US ft	Breadth : 20.00 US ft	Height : 20.00 US ft

Casing Points (Relative to centre, TVD relative to Drill Floor)									
Name	MD (US ft)	Inc (°)	Az (°)	TVD (US ft)	N.Offset (US ft)	E.Offset (US ft)	Latitude (°)	Longitude (°)	
9 5/8 in	950.00	0.00	0.00	950.00	0.00	0.00	40.168445	-104.907525	
7 in	7625.29	90.37	0.07	7198.00	94.13	755.00	40.168703	-104.904823	

Well path created using minimum curvature

Salient Points (Relative to centre, TVD relative to Drill Floor)										
MD (US ft)	Inc (°)	Az (°)	TVD (US ft)	N.Offset (US ft)	E.Offset (US ft)	DLS (°/100 US ft)	T.Face (°)	VS (US ft)	Comment	
0.00	0.00	0.00	0.00	0.00	0.00	0.00	0.00	-0.65		
950.00	0.00	0.00	950.00	0.00	0.00	0.00	0.00	-0.65	9 5/8 in	
2100.00	0.00	0.00	2100.00	0.00	0.00	0.00	0.00	-0.65		
2751.18	13.02	122.61	2745.58	-39.71	62.07	2.00	122.61	-40.29		
6070.44	13.02	122.61	5979.47	-442.79	692.18	0.00	0.00	-442.60		
6721.62	0.00	0.00	6625.05	-482.50	754.25	2.00	180.00	-482.23	KOP @ 6721.62' MD	
7292.40	57.08	0.07	7106.00	-220.94	754.59	10.00	0.07	-220.67	SHARON SPRINGS :	
7378.02	65.64	0.07	7147.00	-145.87	754.69	10.00	0.00	-145.60	NIOBRARA A :	
7426.18	70.46	0.07	7165.00	-101.21	754.75	10.00	0.00	-100.94	NIOBRARA B :	
7625.29	90.37	0.07	7198.00	94.13	755.00	10.00	0.00	94.40	LANDING POINT; 7 in	
14793.65	90.37	0.07	7152.00	7262.34	764.36	0.00	0.00	7262.61	TD @ 14793.65' MD	

Interpolated Points (Relative to centre, TVD relative to Drill Floor)										
MD (US ft)	Inc (°)	Az (°)	TVD (US ft)	N.Offset (US ft)	E.Offset (US ft)	DLS (°/100 US ft)	T.Face (°)	VS (US ft)	Comment	
0.00	0.00	0.00	0.00	0.00	0.00	0.00	0.00	-0.65		

5D Plan Report

Interpolated Points (Relative to centre, TVD relative to Drill Floor)									
MD (US ft)	Inc (°)	Az (°)	TVD (US ft)	N.Offset (US ft)	E.Offset (US ft)	DLS (°/100 US ft)	T.Face (°)	VS (US ft)	Comment
100.00	0.00	0.00	100.00	0.00	0.00	0.00	0.00	-0.65	9 5/8 in
200.00	0.00	0.00	200.00	0.00	0.00	0.00	0.00	-0.65	
300.00	0.00	0.00	300.00	0.00	0.00	0.00	0.00	-0.65	
400.00	0.00	0.00	400.00	0.00	0.00	0.00	0.00	-0.65	
500.00	0.00	0.00	500.00	0.00	0.00	0.00	0.00	-0.65	
600.00	0.00	0.00	600.00	0.00	0.00	0.00	0.00	-0.65	
700.00	0.00	0.00	700.00	0.00	0.00	0.00	0.00	-0.65	
800.00	0.00	0.00	800.00	0.00	0.00	0.00	0.00	-0.65	
900.00	0.00	0.00	900.00	0.00	0.00	0.00	0.00	-0.65	
950.00	0.00	0.00	950.00	0.00	0.00	0.00	0.00	-0.65	
1000.00	0.00	0.00	1000.00	0.00	0.00	0.00	0.00	-0.65	
1100.00	0.00	0.00	1100.00	0.00	0.00	0.00	0.00	-0.65	
1200.00	0.00	0.00	1200.00	0.00	0.00	0.00	0.00	-0.65	
1300.00	0.00	0.00	1300.00	0.00	0.00	0.00	0.00	-0.65	
1400.00	0.00	0.00	1400.00	0.00	0.00	0.00	0.00	-0.65	
1500.00	0.00	0.00	1500.00	0.00	0.00	0.00	0.00	-0.65	
1600.00	0.00	0.00	1600.00	0.00	0.00	0.00	0.00	-0.65	
1700.00	0.00	0.00	1700.00	0.00	0.00	0.00	0.00	-0.65	
1800.00	0.00	0.00	1800.00	0.00	0.00	0.00	0.00	-0.65	
1900.00	0.00	0.00	1900.00	0.00	0.00	0.00	0.00	-0.65	
2000.00	0.00	0.00	2000.00	0.00	0.00	0.00	0.00	-0.65	
2100.00	0.00	0.00	2100.00	0.00	0.00	0.00	0.00	-0.65	
2200.00	2.00	122.61	2199.98	-0.94	1.47	2.00	122.61	-1.59	
2300.00	4.00	122.61	2299.84	-3.76	5.88	2.00	0.00	-4.41	
2400.00	6.00	122.61	2399.45	-8.46	13.22	2.00	0.00	-9.09	
2500.00	8.00	122.61	2498.70	-15.02	23.49	2.00	0.00	-15.65	
2600.00	10.00	122.61	2597.47	-23.45	36.66	2.00	0.00	-24.06	
2700.00	12.00	122.61	2695.62	-33.74	52.74	2.00	0.00	-34.32	
2751.18	13.02	122.61	2745.58	-39.71	62.07	2.00	0.00	-40.29	
2800.00	13.02	122.61	2793.15	-45.64	71.34	0.00	0.00	-46.21	
2900.00	13.02	122.61	2890.58	-57.78	90.33	0.00	0.00	-58.33	
3000.00	13.02	122.61	2988.01	-69.93	109.31	0.00	0.00	-70.45	
3100.00	13.02	122.61	3085.43	-82.07	128.29	0.00	0.00	-82.57	
3200.00	13.02	122.61	3182.86	-94.21	147.28	0.00	0.00	-94.69	
3300.00	13.02	122.61	3280.29	-106.36	166.26	0.00	0.00	-106.81	
3400.00	13.02	122.61	3377.72	-118.50	185.24	0.00	0.00	-118.93	
3500.00	13.02	122.61	3475.15	-130.64	204.22	0.00	0.00	-131.05	
3600.00	13.02	122.61	3572.57	-142.79	223.21	0.00	0.00	-143.17	
3700.00	13.02	122.61	3670.00	-154.93	242.19	0.00	0.00	-155.29	
3800.00	13.02	122.61	3767.43	-167.08	261.17	0.00	0.00	-167.41	
3900.00	13.02	122.61	3864.86	-179.22	280.16	0.00	0.00	-179.53	

5D Plan Report

Interpolated Points (Relative to centre, TVD relative to Drill Floor)									
MD (US ft)	Inc (°)	Az (°)	TVD (US ft)	N.Offset (US ft)	E.Offset (US ft)	DLS (°/100 US ft)	T.Face (°)	VS (US ft)	Comment
4000.00	13.02	122.61	3962.28	-191.36	299.14	0.00	0.00	-191.65	
4100.00	13.02	122.61	4059.71	-203.51	318.12	0.00	0.00	-203.77	
4200.00	13.02	122.61	4157.14	-215.65	337.11	0.00	0.00	-215.89	
4300.00	13.02	122.61	4254.57	-227.79	356.09	0.00	0.00	-228.01	
4400.00	13.02	122.61	4352.00	-239.94	375.07	0.00	0.00	-240.13	
4500.00	13.02	122.61	4449.42	-252.08	394.06	0.00	0.00	-252.25	
4600.00	13.02	122.61	4546.85	-264.22	413.04	0.00	0.00	-264.37	
4700.00	13.02	122.61	4644.28	-276.37	432.02	0.00	0.00	-276.49	
4800.00	13.02	122.61	4741.71	-288.51	451.01	0.00	0.00	-288.61	
4900.00	13.02	122.61	4839.13	-300.66	469.99	0.00	0.00	-300.74	
5000.00	13.02	122.61	4936.56	-312.80	488.97	0.00	0.00	-312.86	
5100.00	13.02	122.61	5033.99	-324.94	507.96	0.00	0.00	-324.98	
5200.00	13.02	122.61	5131.42	-337.09	526.94	0.00	0.00	-337.10	
5300.00	13.02	122.61	5228.85	-349.23	545.92	0.00	0.00	-349.22	
5400.00	13.02	122.61	5326.27	-361.37	564.90	0.00	0.00	-361.34	
5500.00	13.02	122.61	5423.70	-373.52	583.89	0.00	0.00	-373.46	
5600.00	13.02	122.61	5521.13	-385.66	602.87	0.00	0.00	-385.58	
5700.00	13.02	122.61	5618.56	-397.81	621.85	0.00	0.00	-397.70	
5800.00	13.02	122.61	5715.98	-409.95	640.84	0.00	0.00	-409.82	
5900.00	13.02	122.61	5813.41	-422.09	659.82	0.00	0.00	-421.94	
6000.00	13.02	122.61	5910.84	-434.24	678.80	0.00	0.00	-434.06	
6070.44	13.02	122.61	5979.47	-442.79	692.18	0.00	0.00	-442.60	
6100.00	12.43	122.61	6008.30	-446.30	697.66	2.00	180.00	-446.10	
6200.00	10.43	122.61	6106.31	-456.98	714.36	2.00	180.00	-456.76	
6300.00	8.43	122.61	6204.96	-465.81	728.16	2.00	180.00	-465.58	
6400.00	6.43	122.61	6304.11	-472.78	739.06	2.00	180.00	-472.53	
6500.00	4.43	122.61	6403.66	-477.88	747.03	2.00	180.00	-477.62	
6600.00	2.43	122.61	6503.47	-481.11	752.08	2.00	180.00	-480.84	
6700.00	0.43	122.61	6603.44	-482.46	754.18	2.00	180.00	-482.19	
6721.62	0.00	0.00	6625.05	-482.50	754.25	2.00	180.00	-482.23	KOP @ 6721.62' MD
6800.00	7.84	0.07	6703.19	-477.15	754.26	10.00	0.07	-476.88	
6900.00	17.84	0.07	6800.57	-454.95	754.29	10.00	0.00	-454.69	
7000.00	27.84	0.07	6892.61	-416.19	754.34	10.00	0.00	-415.92	
7100.00	37.84	0.07	6976.52	-362.03	754.41	10.00	0.00	-361.76	
7200.00	47.84	0.07	7049.76	-294.12	754.50	10.00	0.00	-293.86	
7292.40	57.08	0.07	7106.00	-220.94	754.59	10.00	0.00	-220.67	SHARON SPRINGS :
7300.00	57.84	0.07	7110.09	-214.53	754.60	10.00	0.00	-214.26	
7378.02	65.64	0.07	7147.00	-145.87	754.69	10.00	0.00	-145.60	NIOBRARA A :
7400.00	67.84	0.07	7155.68	-125.67	754.72	10.00	0.00	-125.40	
7426.18	70.46	0.07	7165.00	-101.21	754.75	10.00	0.00	-100.94	NIOBRARA B :
7500.00	77.84	0.07	7185.15	-30.25	754.84	10.00	0.00	-29.98	

5D Plan Report

Interpolated Points (Relative to centre, TVD relative to Drill Floor)									
MD (US ft)	Inc (°)	Az (°)	TVD (US ft)	N.Offset (US ft)	E.Offset (US ft)	DLS (°/100 US ft)	T.Face (°)	VS (US ft)	Comment
7600.00	87.84	0.07	7197.60	68.85	754.97	10.00	0.00	69.12	LANDING POINT; 7 in
7625.29	90.37	0.07	7198.00	94.13	755.00	10.00	0.00	94.40	
7700.00	90.37	0.07	7197.52	168.84	755.10	0.00	0.00	169.11	
7800.00	90.37	0.07	7196.88	268.84	755.23	0.00	0.00	269.11	
7900.00	90.37	0.07	7196.23	368.84	755.36	0.00	0.00	369.10	
8000.00	90.37	0.07	7195.59	468.83	755.49	0.00	0.00	469.10	
8100.00	90.37	0.07	7194.95	568.83	755.62	0.00	0.00	569.10	
8200.00	90.37	0.07	7194.31	668.83	755.75	0.00	0.00	669.10	
8300.00	90.37	0.07	7193.67	768.83	755.88	0.00	0.00	769.10	
8400.00	90.37	0.07	7193.03	868.83	756.01	0.00	0.00	869.09	
8500.00	90.37	0.07	7192.38	968.82	756.14	0.00	0.00	969.09	
8600.00	90.37	0.07	7191.74	1068.82	756.28	0.00	0.00	1069.09	
8700.00	90.37	0.07	7191.10	1168.82	756.41	0.00	0.00	1169.09	
8800.00	90.37	0.07	7190.46	1268.82	756.54	0.00	0.00	1269.09	
8900.00	90.37	0.07	7189.82	1368.81	756.67	0.00	0.00	1369.08	
9000.00	90.37	0.07	7189.18	1468.81	756.80	0.00	0.00	1469.08	
9100.00	90.37	0.07	7188.53	1568.81	756.93	0.00	0.00	1569.08	
9200.00	90.37	0.07	7187.89	1668.81	757.06	0.00	0.00	1669.08	
9300.00	90.37	0.07	7187.25	1768.81	757.19	0.00	0.00	1769.08	
9400.00	90.37	0.07	7186.61	1868.80	757.32	0.00	0.00	1869.07	
9500.00	90.37	0.07	7185.97	1968.80	757.45	0.00	0.00	1969.07	
9600.00	90.37	0.07	7185.33	2068.80	757.58	0.00	0.00	2069.07	
9700.00	90.37	0.07	7184.68	2168.80	757.71	0.00	0.00	2169.07	
9800.00	90.37	0.07	7184.04	2268.80	757.84	0.00	0.00	2269.07	
9900.00	90.37	0.07	7183.40	2368.79	757.97	0.00	0.00	2369.06	
10000.00	90.37	0.07	7182.76	2468.79	758.10	0.00	0.00	2469.06	
10100.00	90.37	0.07	7182.12	2568.79	758.23	0.00	0.00	2569.06	
10200.00	90.37	0.07	7181.48	2668.79	758.36	0.00	0.00	2669.06	
10300.00	90.37	0.07	7180.83	2768.78	758.49	0.00	0.00	2769.06	
10400.00	90.37	0.07	7180.19	2868.78	758.63	0.00	0.00	2869.05	
10500.00	90.37	0.07	7179.55	2968.78	758.76	0.00	0.00	2969.05	
10600.00	90.37	0.07	7178.91	3068.78	758.89	0.00	0.00	3069.05	
10700.00	90.37	0.07	7178.27	3168.78	759.02	0.00	0.00	3169.05	
10800.00	90.37	0.07	7177.63	3268.77	759.15	0.00	0.00	3269.05	
10900.00	90.37	0.07	7176.98	3368.77	759.28	0.00	0.00	3369.04	
11000.00	90.37	0.07	7176.34	3468.77	759.41	0.00	0.00	3469.04	
11100.00	90.37	0.07	7175.70	3568.77	759.54	0.00	0.00	3569.04	
11200.00	90.37	0.07	7175.06	3668.77	759.67	0.00	0.00	3669.04	
11300.00	90.37	0.07	7174.42	3768.76	759.80	0.00	0.00	3769.03	
11400.00	90.37	0.07	7173.78	3868.76	759.93	0.00	0.00	3869.03	
11500.00	90.37	0.07	7173.13	3968.76	760.06	0.00	0.00	3969.03	

5D Plan Report

Interpolated Points (Relative to centre, TVD relative to Drill Floor)									
MD (US ft)	Inc (°)	Az (°)	TVD (US ft)	N. Offset (US ft)	E. Offset (US ft)	DLS (°/100 US ft)	T.Face (°)	VS (US ft)	Comment
11600.00	90.37	0.07	7172.49	4068.76	760.19	0.00	0.00	4069.03	
11700.00	90.37	0.07	7171.85	4168.75	760.32	0.00	0.00	4169.03	
11800.00	90.37	0.07	7171.21	4268.75	760.45	0.00	0.00	4269.02	
11900.00	90.37	0.07	7170.57	4368.75	760.58	0.00	0.00	4369.02	
12000.00	90.37	0.07	7169.93	4468.75	760.71	0.00	0.00	4469.02	
12100.00	90.37	0.07	7169.28	4568.75	760.84	0.00	0.00	4569.02	
12200.00	90.37	0.07	7168.64	4668.74	760.97	0.00	0.00	4669.02	
12300.00	90.37	0.07	7168.00	4768.74	761.11	0.00	0.00	4769.01	
12400.00	90.37	0.07	7167.36	4868.74	761.24	0.00	0.00	4869.01	
12500.00	90.37	0.07	7166.72	4968.74	761.37	0.00	0.00	4969.01	
12600.00	90.37	0.07	7166.08	5068.74	761.50	0.00	0.00	5069.01	
12700.00	90.37	0.07	7165.43	5168.73	761.63	0.00	0.00	5169.01	
12800.00	90.37	0.07	7164.79	5268.73	761.76	0.00	0.00	5269.00	
12900.00	90.37	0.07	7164.15	5368.73	761.89	0.00	0.00	5369.00	
13000.00	90.37	0.07	7163.51	5468.73	762.02	0.00	0.00	5469.00	
13100.00	90.37	0.07	7162.87	5568.72	762.15	0.00	0.00	5569.00	
13200.00	90.37	0.07	7162.23	5668.72	762.28	0.00	0.00	5669.00	
13300.00	90.37	0.07	7161.58	5768.72	762.41	0.00	0.00	5768.99	
13400.00	90.37	0.07	7160.94	5868.72	762.54	0.00	0.00	5868.99	
13500.00	90.37	0.07	7160.30	5968.72	762.67	0.00	0.00	5968.99	
13600.00	90.37	0.07	7159.66	6068.71	762.80	0.00	0.00	6068.99	
13700.00	90.37	0.07	7159.02	6168.71	762.93	0.00	0.00	6168.99	
13800.00	90.37	0.07	7158.38	6268.71	763.06	0.00	0.00	6268.98	
13900.00	90.37	0.07	7157.73	6368.71	763.19	0.00	0.00	6368.98	
14000.00	90.37	0.07	7157.09	6468.71	763.32	0.00	0.00	6468.98	
14100.00	90.37	0.07	7156.45	6568.70	763.46	0.00	0.00	6568.98	
14200.00	90.37	0.07	7155.81	6668.70	763.59	0.00	0.00	6668.98	
14300.00	90.37	0.07	7155.17	6768.70	763.72	0.00	0.00	6768.97	
14400.00	90.37	0.07	7154.53	6868.70	763.85	0.00	0.00	6868.97	
14500.00	90.37	0.07	7153.88	6968.69	763.98	0.00	0.00	6968.97	
14600.00	90.37	0.07	7153.24	7068.69	764.11	0.00	0.00	7068.97	
14700.00	90.37	0.07	7152.60	7168.69	764.24	0.00	0.00	7168.96	
14793.65	90.37	0.07	7152.00	7262.34	764.36	0.00	0.00	7262.61	TD @ 14793.65' MD

Formation Points (Relative to centre, TVD relative to Drill Floor)			
Name	MD (US ft)	TVD (US ft)	
SHARON SPRINGS	7292.40	7106.00	
NIOBRARA A	7378.02	7147.00	
NIOBRARA B	7426.18	7165.00	