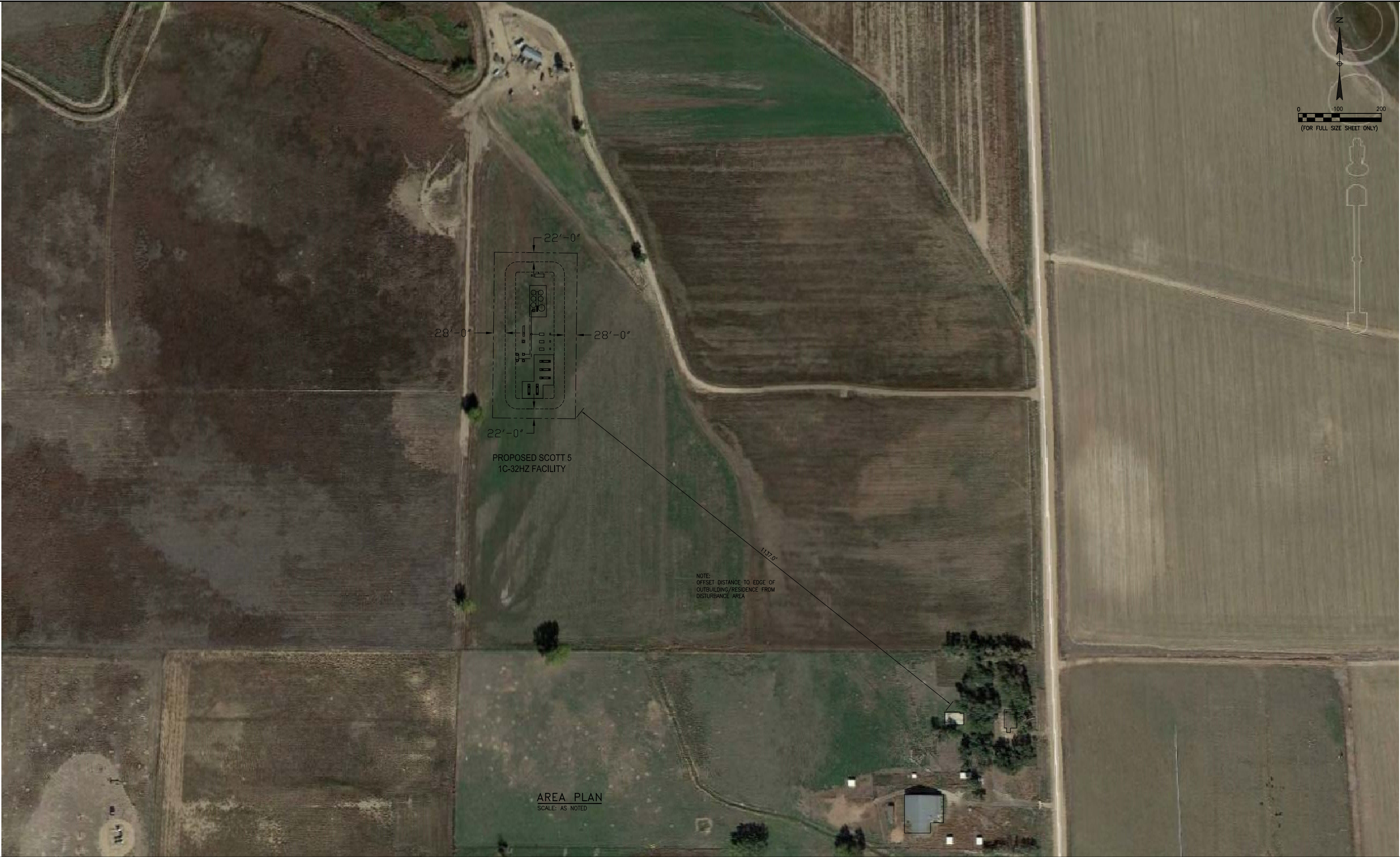


THIS DRAWING AND THE DESIGN IT COVERS ARE CONFIDENTIAL AND REMAIN THE PROPERTY OF ANADARKO PETROLEUM CORPORATION AND SHALL NOT BE DISCLOSED TO OTHERS OR REPRODUCED IN ANY MANNER OR USED FOR ANY PURPOSE WHATSOEVER EXCEPT BY WRITTEN PERMISSION BY THE OWNER.



**NOTES:**  
1. EQUIPMENT PLACEMENT IS APPROXIMATE AND SUBJECT TO MINOR MODIFICATION DUE TO SITE SPECIFIC CIRCUMSTANCES.

REFERENCE DRAWINGS		REVISIONS					
SCT-GA-101	SCOTT 5 - PLOT PLAN WITH EQUIPMENT LOCATIONS		ISSUED FOR PERMIT	CEK	11/20/13	MPC	11/20/13
DWG. NO.	TITLE	NO.	DESCRIPTION	BY	DATE	CHK.	APPR. DATE

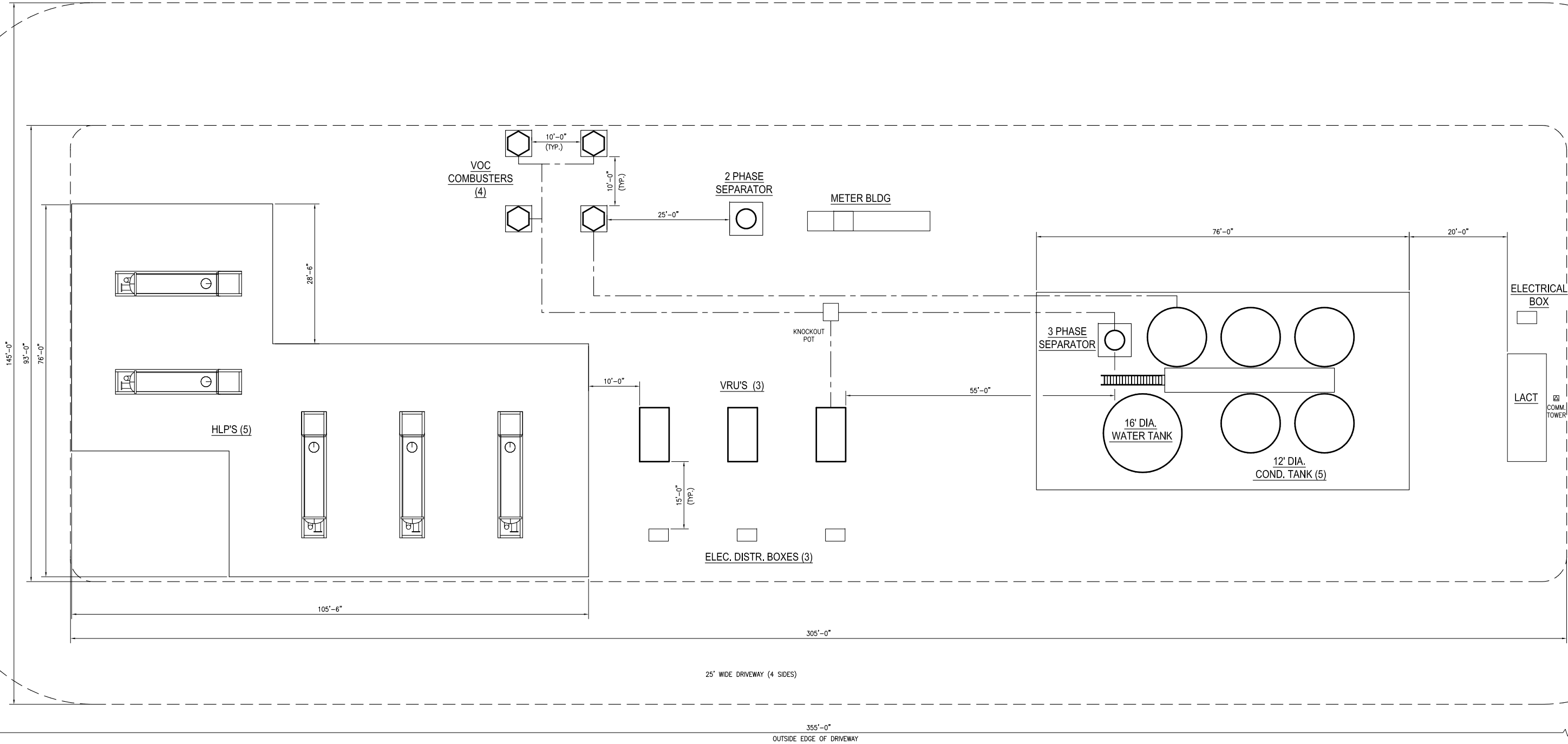
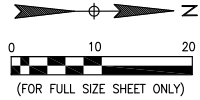


PIPELINE STRATEGIES & INTEGRITY

**GREATER WATTENBERG AREA**  
**SCOTT 5**  
**AREA PLAN**

DRAWN BY: CEK	CREATION DATE: 11/20/13	AFE No.:
APPROVED:	APPR. DATE:	
DWG. No.:	SCT-GA-100	
SCALE: 1"= 100' (FULL SIZE)	SHEET No. 1 OF 1	

THIS DRAWING AND THE DESIGN IT COVERS ARE CONFIDENTIAL AND REMAIN THE PROPERTY OF ANADARKO PETROLEUM CORPORATION AND SHALL NOT BE DISCLOSED TO OTHERS OR REPRODUCED IN ANY MANNER OR USED FOR ANY PURPOSE WHATSOEVER EXCEPT BY WRITTEN PERMISSION BY THE OWNER.



**PLOT PLAN**  
SCALE AS NOTED

**LEGEND**

- DRIVEWAY
- - - ABOVE GRADE PIPE

**NOTES:**  
1. EQUIPMENT PLACEMENT IS APPROXIMATE AND SUBJECT TO MINOR MODIFICATION DUE TO SITE SPECIFIC CIRCUMSTANCES.

REFERENCE DRAWINGS			REVISIONS					
SCT-GA-100	SCOTT 5 - AREA PLAN		ISSUED FOR PERMIT	CEK	11/20/13	MPC	11/20/13	
DWG. NO.	TITLE	NO.	DESCRIPTION	BY	DATE	CHK.	DATE	APPR. DATE



**PIPELINE STRATEGIES & INTEGRITY**

**GREATER WATTENBERG AREA**  
**SCOTT 5**  
**PLOT PLAN WITH EQUIPMENT LOCATIONS**

DRAWN BY: CEK	CREATION DATE: 11/15/13	AFE No.:
APPROVED:	APPR. DATE:	
DWG. No.:	SCT-GA-101	
SCALE: 1"= 10' (FULL SIZE)	SHEET No. 1 OF 1	