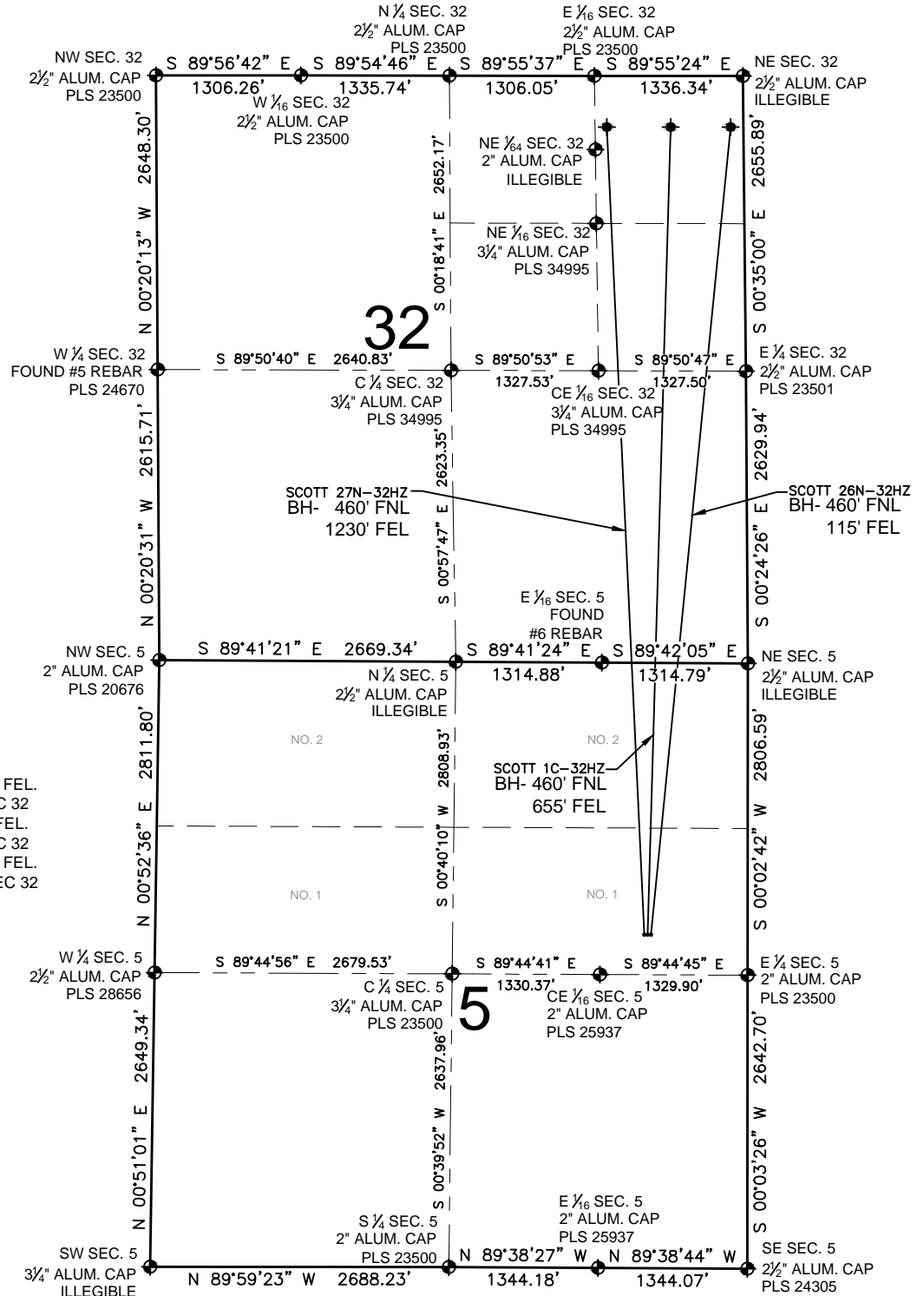


SCOTT 1C-32HZ MULTI-WELL PLAN

SECTION 5, TOWNSHIP 2 NORTH, RANGE 67 WEST, 6TH P.M.



NOTES:

SCOTT 26N-32HZ TO BE AT 2446' FNL, 870' FEL.
BOTTOM HOLE AT 460' FNL & 115' FEL, SEC 32
SCOTT 1C-32HZ TO BE AT 2446' FNL, 900' FEL.
BOTTOM HOLE AT 460' FNL & 655' FEL, SEC 32
SCOTT 27N-32HZ TO BE AT 2446' FNL, 930' FEL.
BOTTOM HOLE AT 460' FNL & 1230' FEL, SEC 32

LEGEND

- = EXISTING MONUMENT
- = PROPOSED WELL
- ◆ = BOTTOM HOLE
- ◆ = EXISTING WELL
- BH = BOTTOM HOLE



KERR-MCGEE OIL & GAS ONSHORE LP

FIELD DATE:

06-17-13

DRAWING DATE:

07-26-13

SURFACE LOCATION:

NO. 1, NE 1/4, SEC. 5, T2N, R67W, 6TH P.M.

WELD COUNTY, COLORADO

