

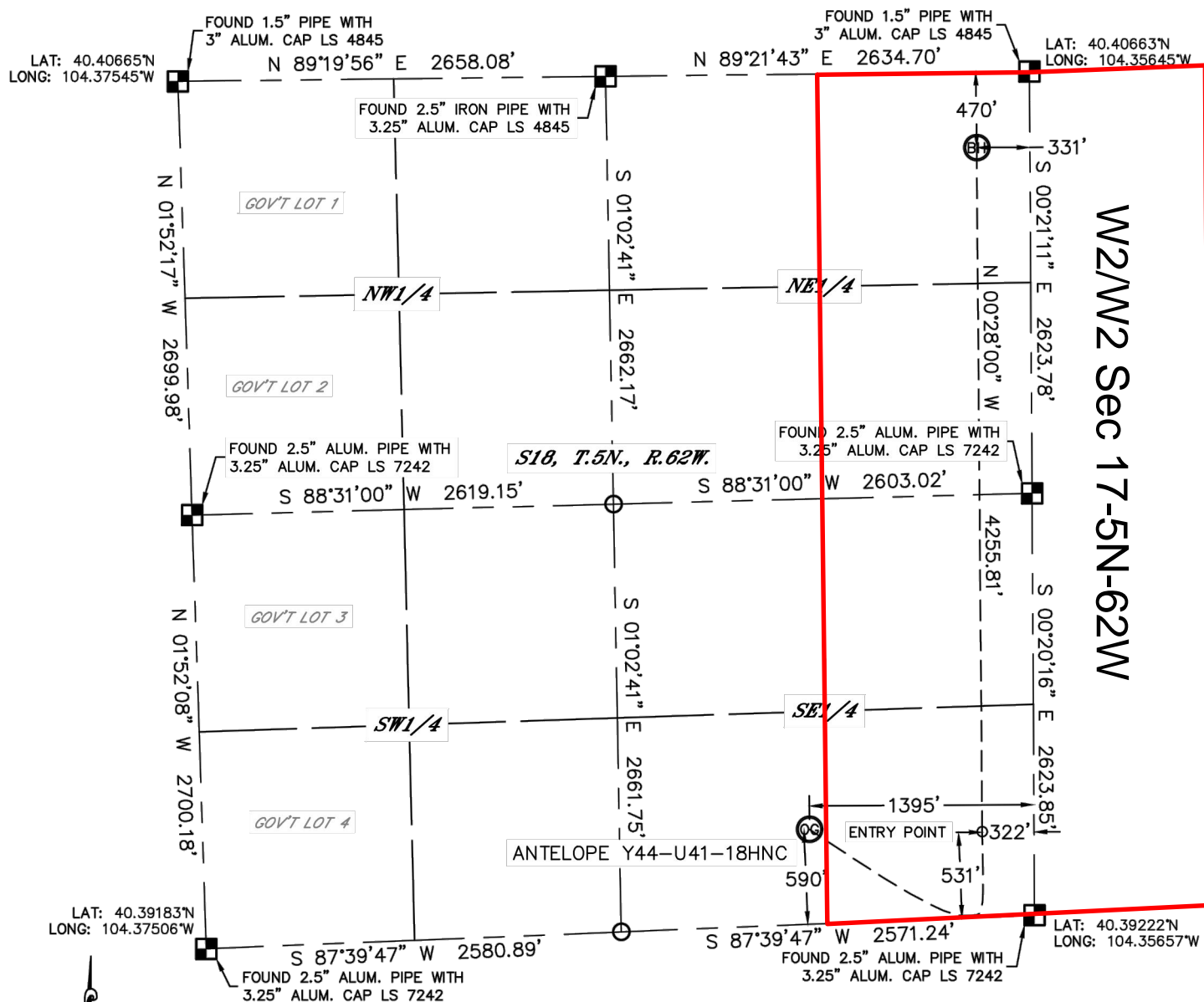


Lat40°, Inc. 1635 Foxtrail Drive, Suite 325 Loveland, CO 970-776-3321

## WELL LOCATION CERTIFICATE

THIS MAP DOES NOT REPRESENT A BOUNDARY SURVEY

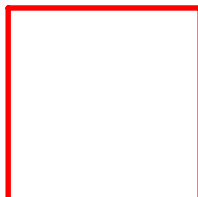
SECTION: 18  
TOWNSHIP: 5N  
RANGE: 62W



In accordance with a request from Keith Caplan with BONANZA CREEK ENERGY, INC.  
Lat40°, Inc. has determined the surface location of the ANTELOPE Y44-U41-18HNC to be 590' from the  
SOUTH line and 1395' from the EAST line and the bottom hole to be 470' from the NORTH line and 331'  
from the EAST line.



**BONANZA  
CREEK**



Wellbore Spacing Unit Outline



### Wellbore Spacing Unit Map

29 October 2013 ksc

Antelope Y44-U41-18HNC  
E2/E2 Sec 18 T5N R62W 6th PM  
W2/W2 Sec 17 T5N R62W 6th PM  
Weld County, Colorado