

T8N, R80W, 6th P.M.

EE3 LLC

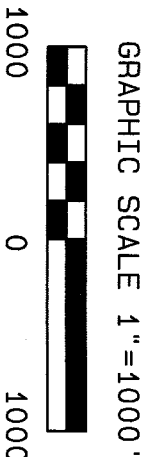
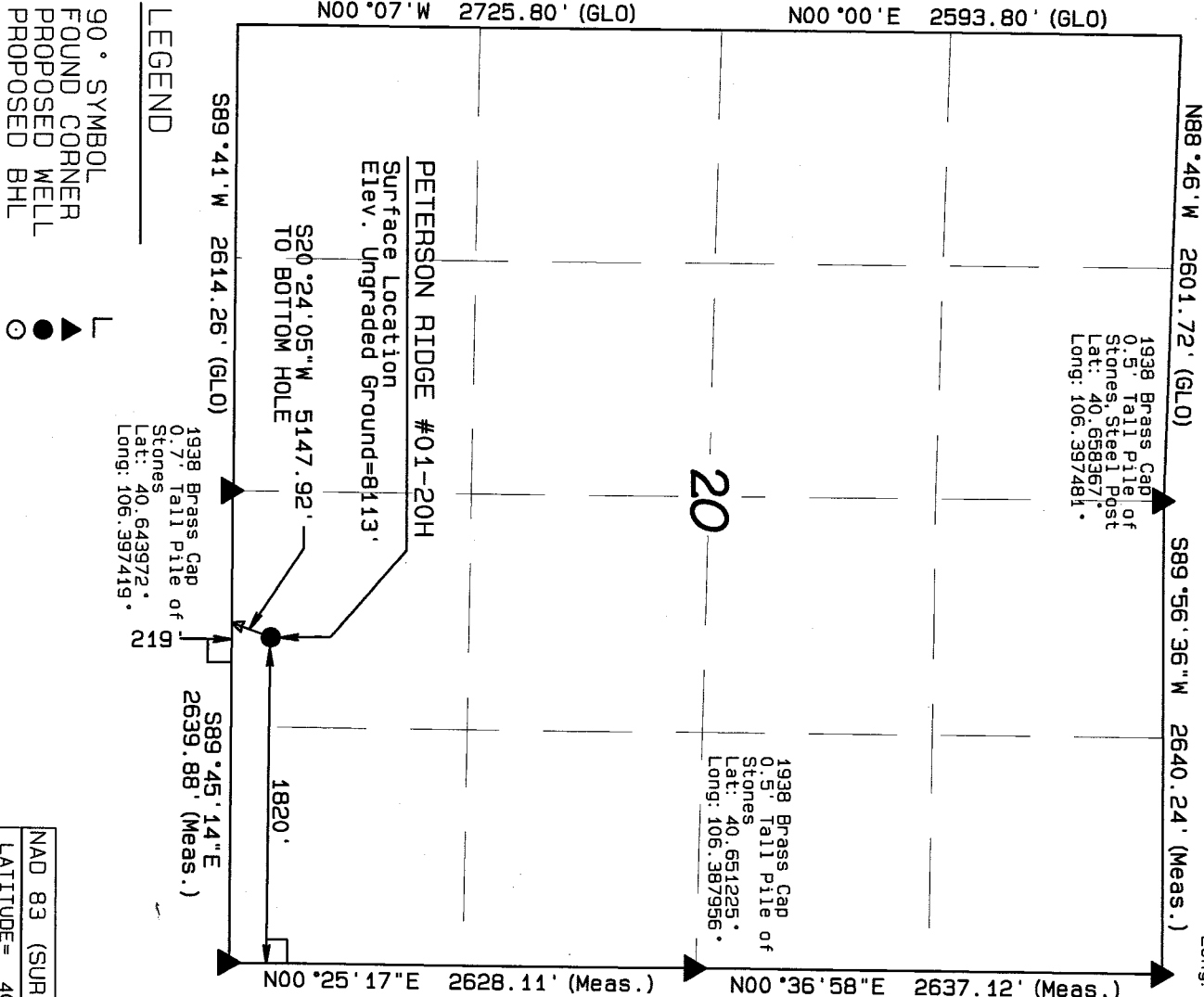
Well location, PETERSON RIDGE #1-20H. (SURFACE LOCATION) located as shown in the SW1/4SE1/4 of Section 20, T8N, R80W, 6th P.M., Jackson County, Colorado.

BASIS OF BEARINGS

BASIS OF BEARINGS IS TRUE NORTH USING GPS

BASIS OF ELEVATION

SPOT ELEVATION AT THE SE CORNER OF SECTION 20, T8N, R80W, 6TH PM, TAKEN FROM THE DELANEY BUTTE, CO QUADRANGLE, USGS 7.5 MIN QUAD (TOPOGRAPHIC MAP) WITH SAID ELEVATION MARKED AS BEING 8171 FEET.

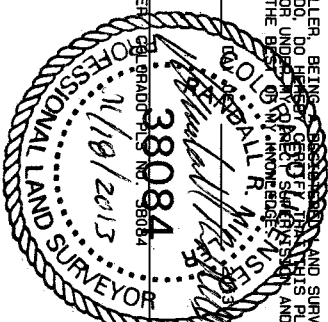


I, RANDALL R. MILLER, BEING A LICENSED LAND SURVEYOR IN THE STATE OF COLORADO, DO HEREBY CERTIFY THAT THIS PLAT WAS MADE BY ME AND/OR UNDER MY CLOSE PERSONAL SUPERVISION AND THAT IT IS ACCURATE TO THE BEST OF MY KNOWLEDGE AND BELIEF.

DATED THIS

11/19/2013

RANDALL R. MILLER, LAND SURVEYOR



NORTH PARK ENGINEERING & CONSULTING, INC.

P.O. BOX 395
WALDEN, CO 80480
(970) 723-3725

NAD 83 (SURFACE LOCATION)	PDOP = 1.148
LATITUDE= 40.644586°N	DATE OF FIELD WORK: NOV 18, 2013
LONGITUDE=106.394469°W	DRAWING COMPLETION: NOV 18, 2013
	SURVEYED BY: TAT
	DRAWN BY: BRM
	CHECKED BY: TAT
	JOB NO.: 13-121

T8N, R80W, 6th P.M.

EE3 LLC

1938 Brass Cap
0.7' Tail Pile of
Stones
Lat: 40.643972°
Long: 106.397419°

S89°45'14"E
2639.88' (Meas.)

1938 Brass Cap
0.5' Tail Pile of
Stones, Steel Post
Lat: 40.644014°
Long: 106.387911°
Elev. = 8171'

Well location, PETERSON RIDGE #1-20H. (TARGET
BOTTOM HOLE) located as shown in the SE1/4SW1/4
of Section 29, T8N, R80W, 6th P.M., Jackson
County, Colorado.

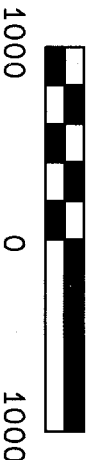
BASIS OF BEARINGS

BASIS OF BEARINGS IS TRUE NORTH USING GPS

BASIS OF ELEVATION

SPOT ELEVATION AT THE SE CORNER OF SECTION 20,
T8N, R80W, 6TH PM. TAKEN FROM THE DELANEY BUTTE,
CO QUADRANGLE, USGS 7.5 MIN QUAD (TOPOGRAPHIC
MAP) WITH SAID ELEVATION MARKED AS BEING 8171 FEET.

GRAPHIC SCALE 1"=1000'



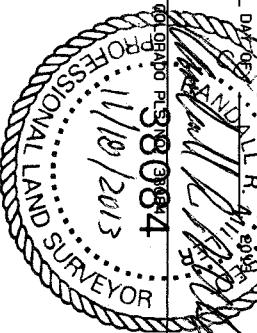
I, RANDALL R. MILLER, BEING A REGISTERED LAND SURVEYOR IN THE
STATE OF COLORADO, DO HEREBY CERTIFY THAT THIS PLAT WAS
MADE BY ME AND/OR UNDER MY DIRECT SUPERVISION AND THAT IT
IS ACCURATE TO THE BEST OF MY KNOWLEDGE.

DATED THIS

DAY OF

2013

RANDALL R. MILLER, COLORADO REG. NO. 38084



NORTH PARK ENGINEERING &
CONSULTING, INC.

P.O. BOX 395
WALDEN, CO 80480
(970) 723-3725

NAD 83 (TARGET BOTTOM HOLE)

LATITUDE= 40.631293°N

LONGITUDE=106.400759°W

SHEET 2 OF 2

JOB NO.: 13-121

LEGEND

90° SYMBOL
FOUND CORNER
PROPOSED WELL
PROPOSED BHL



1938 Brass Cap
0.5' Tail Pile of
Stones
Lat: 40.629650°N
Long: 106.406519°W

3.5" ALUM CAP
PLS 38084 (2013)
Lat: 40.629643°N
106.396993°W

N89°21'43"W 2644.32' (Meas.)

N89°31'00"E 2641.32' (GLO)

N00°21'51"W 2601.48' (Meas.)

N00°00'00"W 2593.8' (GLO)

1938 Brass Cap
1.0' Tail Pile of
Stones
Lat: 40.636790°N
Long: 106.406675°W

N20°24'05"E 5147.92'
TO SURFACE LOCATION
29

N00°16'00"W 2628.12' (GLO)

N00°04'00"W 2636.70' (GLO)