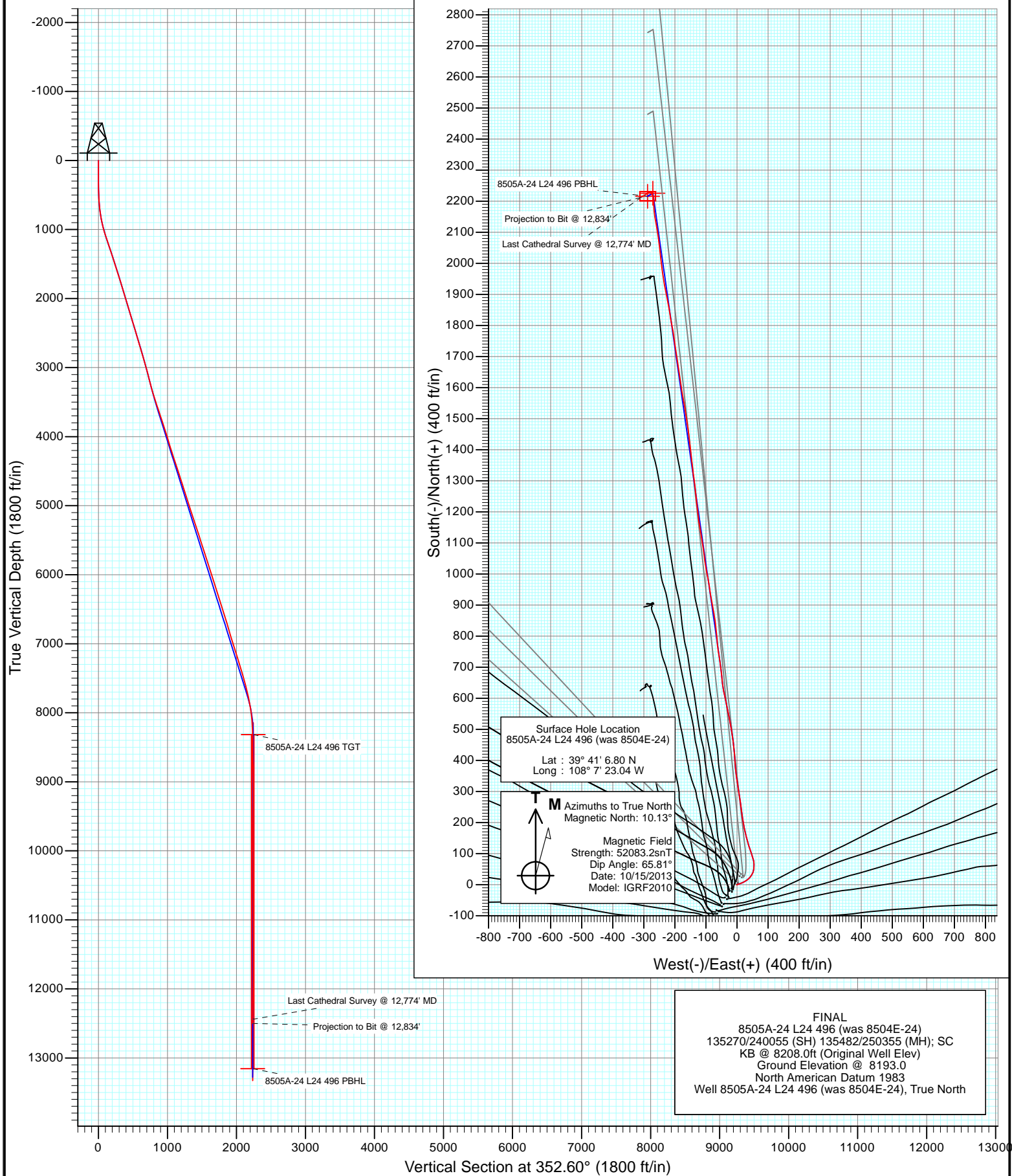


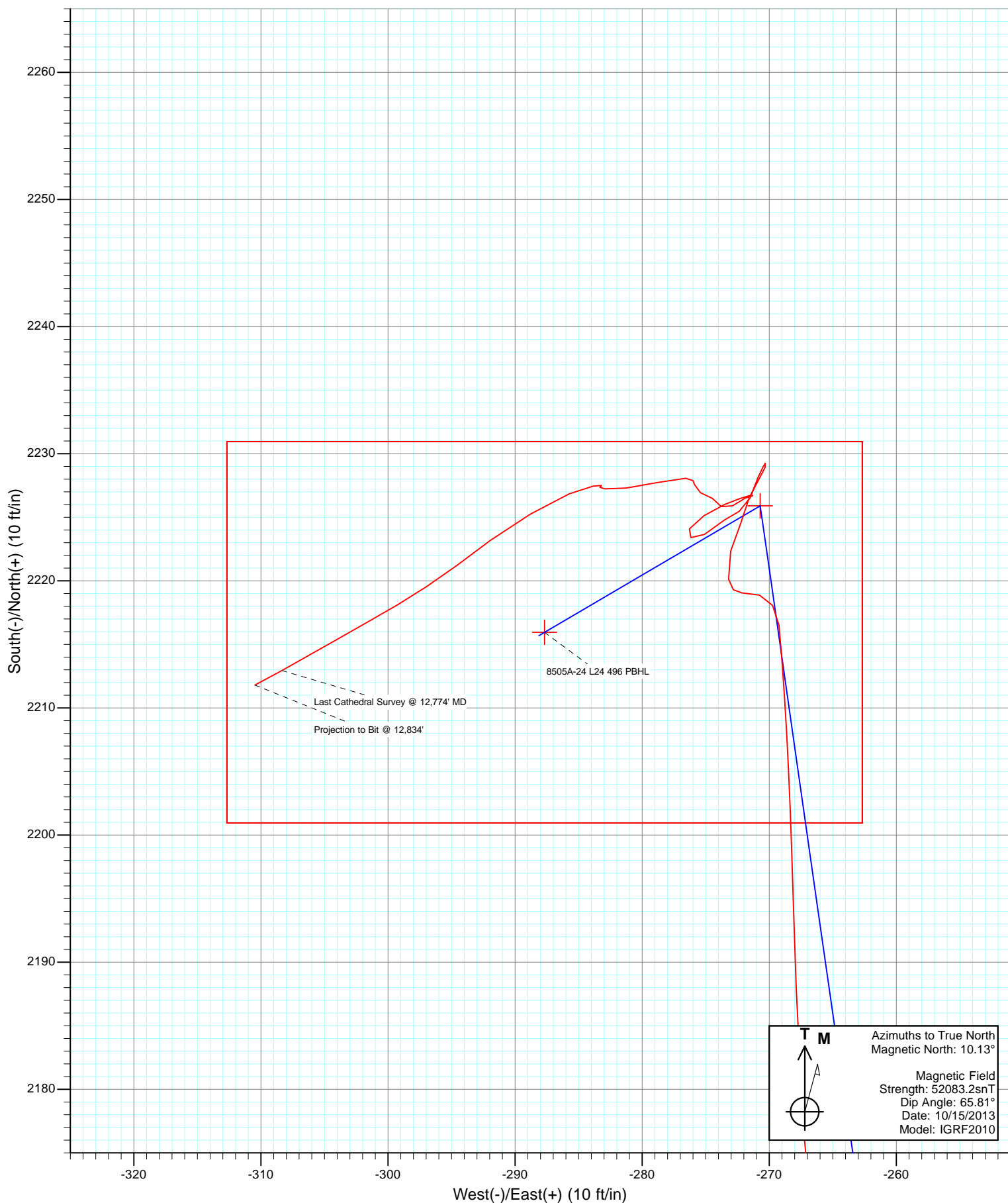


Project: Story Gulch  
Site: L24 496  
Well: 8505A-24 L24 496 (was 8504E-24)  
Wellbore: DD  
Design: FINAL





Project: Story Gulch  
Site: L24 496  
Well: 8505A-24 L24 496 (was 8504E-24)  
Wellbore: DD  
Design: FINAL



# Cathedral Energy Services

## Survey Report

<b>Company:</b>	EnCana Oil & Gas (USA) Inc	<b>Local Co-ordinate Reference:</b>	Well 8505A-24 L24 496 (was 8504E-24)
<b>Project:</b>	Story Gulch	<b>TVD Reference:</b>	KB @ 8208.0ft (Original Well Elev)
<b>Site:</b>	L24 496	<b>MD Reference:</b>	KB @ 8208.0ft (Original Well Elev)
<b>Well:</b>	8505A-24 L24 496 (was 8504E-24)	<b>North Reference:</b>	True
<b>Wellbore:</b>	DD	<b>Survey Calculation Method:</b>	Minimum Curvature
<b>Design:</b>	FINAL	<b>Database:</b>	USA EDM 5000 Multi Users DB

<b>Project</b>	Story Gulch		
<b>Map System:</b>	US State Plane 1983	<b>System Datum:</b>	Mean Sea Level
<b>Geo Datum:</b>	North American Datum 1983		
<b>Map Zone:</b>	Colorado Central Zone		

Site		L24 496			
Site Position:		Northing:	1,685,024.52 ft	Latitude:	39° 41' 5.72 N
From:	Lat/Long	Easting:	2,261,789.15 ft	Longitude:	108° 7' 23.99 W
Position Uncertainty:	0.0 ft	Slot Radius:	13.200 in	Grid Convergence:	-1.65 °

Well	8505A-24 L24 496 (was 8504E-24)					
Well Position	+N/-S	0.0 ft	Northing:	1,685,131.59 ft	Latitude:	39° 41' 6.80 N
	+E/-W	0.0 ft	Easting:	2,261,866.55 ft	Longitude:	108° 7' 23.04 W
Position Uncertainty		0.0 ft	Wellhead Elevation:	ft	Ground Level:	8,193.0 ft

<b>Wellbore</b>	DD				
<b>Magnetics</b>	<b>Model Name</b>	<b>Sample Date</b>	<b>Declination (°)</b>	<b>Dip Angle (°)</b>	<b>Field Strength (nT)</b>
	IGRF2010	10/15/2013	10.13	65.81	52,083

<b>Design</b>	FINAL				
<b>Audit Notes:</b>					
<b>Version:</b>	1.0	<b>Phase:</b>	ACTUAL	<b>Tie On Depth:</b>	0.0
<b>Vertical Section:</b>	<b>Depth From (TVD)</b>	<b>+N/-S</b>	<b>+E/-W</b>	<b>Direction</b>	
	(ft)	(ft)	(ft)	(°)	
	0.0	0.0	0.0	352.60	

<b>Survey Program</b>	<b>Date</b>	10/27/2013			
<b>From (ft)</b>	<b>To (ft)</b>	<b>Survey (Wellbore)</b>	<b>Tool Name</b>	<b>Description</b>	
166.0	3,269.0	Survey #1 (DD)	Geolink MWD	Geolink MWD	
3,365.0	12,834.0	Survey #2 (DD)	Geolink MWD	Geolink MWD	

<b>Survey</b>										
<b>Measured Depth (ft)</b>	<b>Inclination (°)</b>	<b>Azimuth (°)</b>	<b>Vertical Depth (ft)</b>	<b>+N/-S (ft)</b>	<b>+E/-W (ft)</b>	<b>Vertical Section (ft)</b>	<b>Dogleg Rate (°/100ft)</b>	<b>Build Rate (°/100ft)</b>	<b>Formations / Comments</b>	
0.0	0.00	0.00	0.0	0.0	0.0	0.0	0.00	0.00		
166.0	0.20	310.00	166.0	0.2	-0.2	0.2	0.12	0.12		
257.0	1.20	88.00	257.0	0.3	0.6	0.2	1.49	1.10		
288.0	1.80	68.50	288.0	0.5	1.4	0.3	2.51	1.94		
319.0	2.40	71.00	319.0	0.9	2.5	0.6	1.96	1.94		
349.0	3.30	71.60	348.9	1.4	3.9	0.9	3.00	3.00		
379.0	4.00	70.20	378.9	2.0	5.7	1.3	2.35	2.33		
410.0	4.80	74.10	409.8	2.7	7.9	1.7	2.75	2.58		
440.0	5.60	70.90	439.6	3.5	10.5	2.2	2.84	2.67		
470.0	6.40	69.60	469.5	4.6	13.5	2.8	2.70	2.67		
500.0	7.30	66.60	499.3	6.0	16.8	3.7	3.23	3.00		
531.0	7.70	59.90	530.0	7.8	20.4	5.1	3.10	1.29		

# Cathedral Energy Services

## Survey Report

<b>Company:</b>	EnCana Oil & Gas (USA) Inc	<b>Local Co-ordinate Reference:</b>	Well 8505A-24 L24 496 (was 8504E-24)
<b>Project:</b>	Story Gulch	<b>TVD Reference:</b>	KB @ 8208.0ft (Original Well Elev)
<b>Site:</b>	L24 496	<b>MD Reference:</b>	KB @ 8208.0ft (Original Well Elev)
<b>Well:</b>	8505A-24 L24 496 (was 8504E-24)	<b>North Reference:</b>	True
<b>Wellbore:</b>	DD	<b>Survey Calculation Method:</b>	Minimum Curvature
<b>Design:</b>	FINAL	<b>Database:</b>	USA EDM 5000 Multi Users DB

### Survey

Measured Depth (ft)	Inclination (°)	Azimuth (°)	Vertical Depth (ft)	+N/-S (ft)	+E/-W (ft)	Vertical Section (ft)	Dogleg Rate (°/100ft)	Build Rate (°/100ft)	Formations / Comments
563.0	8.10	59.30	561.7	10.0	24.2	6.8	1.28	1.25	
606.0	9.10	60.60	604.2	13.2	29.8	9.3	2.37	2.33	
655.0	9.80	48.80	652.6	17.9	36.3	13.0	4.20	1.43	
701.0	10.10	38.70	697.9	23.6	41.7	18.0	3.84	0.65	
747.0	10.30	33.10	743.1	30.2	46.5	23.9	2.20	0.43	
793.0	10.70	24.80	788.4	37.5	50.5	30.7	3.40	0.87	
839.0	11.50	13.00	833.5	45.9	53.4	38.6	5.22	1.74	
885.0	12.30	4.00	878.5	55.2	54.7	47.7	4.39	1.74	
931.0	13.30	357.80	923.4	65.4	54.9	57.8	3.69	2.17	
977.0	14.30	350.40	968.1	76.3	53.7	68.7	4.41	2.17	
1,069.0	16.70	339.10	1,056.7	99.8	47.1	92.9	4.18	2.61	
1,160.0	18.80	341.30	1,143.4	125.9	37.7	120.0	2.42	2.31	
1,252.0	18.90	347.50	1,230.5	154.5	29.8	149.4	2.18	0.11	
1,344.0	18.90	347.90	1,317.5	183.7	23.4	179.1	0.14	0.00	
1,436.0	18.20	351.20	1,404.7	212.4	18.1	208.3	1.37	-0.76	
1,528.0	18.10	353.20	1,492.2	240.8	14.2	237.0	0.69	-0.11	
1,620.0	17.70	351.80	1,579.7	268.8	10.5	265.3	0.64	-0.43	
1,712.0	17.30	351.00	1,667.4	296.2	6.4	292.9	0.51	-0.43	
1,804.0	16.70	350.40	1,755.4	322.7	2.0	319.8	0.68	-0.65	
1,895.0	16.60	352.30	1,842.6	348.5	-1.9	345.9	0.61	-0.11	
1,987.0	16.70	355.30	1,930.8	374.7	-4.7	372.2	0.94	0.11	
2,079.0	17.20	356.20	2,018.8	401.5	-6.7	399.0	0.61	0.54	
2,171.0	16.80	355.50	2,106.7	428.3	-8.7	425.8	0.49	-0.43	
2,263.0	16.70	353.20	2,194.8	454.7	-11.3	452.3	0.73	-0.11	
2,355.0	17.10	350.90	2,282.9	481.1	-15.0	479.1	0.85	0.43	
2,447.0	16.80	349.60	2,370.9	507.6	-19.5	505.9	0.53	-0.33	
2,539.0	16.50	349.00	2,459.0	533.5	-24.4	532.2	0.38	-0.33	
2,630.0	17.20	348.70	2,546.1	559.4	-29.5	558.5	0.78	0.77	
2,722.0	16.70	348.50	2,634.1	585.7	-34.8	585.3	0.55	-0.54	
2,814.0	16.50	347.50	2,722.3	611.4	-40.3	611.5	0.38	-0.22	
2,906.0	16.50	351.50	2,810.5	637.0	-45.0	637.5	1.23	0.00	
2,997.0	16.00	355.00	2,897.9	662.3	-48.0	663.0	1.21	-0.55	
3,089.0	15.30	353.10	2,986.4	687.0	-50.6	687.8	0.94	-0.76	
3,181.0	14.50	352.10	3,075.4	710.5	-53.6	711.4	0.91	-0.87	
3,269.0	14.10	351.50	3,160.6	732.0	-56.7	733.2	0.48	-0.45	Last Cathedral Survey @ 3269' MD
3,365.0	14.20	350.30	3,253.7	755.1	-60.4	756.6	0.32	0.10	
3,457.0	16.10	356.10	3,342.5	779.0	-63.2	780.6	2.64	2.07	
3,549.0	18.40	354.10	3,430.4	806.2	-65.6	807.9	2.58	2.50	
3,641.0	17.80	353.60	3,517.8	834.6	-68.6	836.5	0.67	-0.65	
3,732.0	19.60	350.90	3,604.0	863.5	-72.6	865.6	2.19	1.98	
3,824.0	17.70	348.90	3,691.2	892.4	-77.7	895.0	2.18	-2.07	
3,916.0	17.80	350.30	3,778.8	920.0	-82.8	923.0	0.48	0.11	
4,008.0	19.20	351.80	3,866.0	948.9	-87.3	952.2	1.61	1.52	
4,100.0	16.70	350.40	3,953.6	976.9	-91.7	980.6	2.76	-2.72	
4,192.0	15.90	348.10	4,041.9	1,002.2	-96.5	1,006.3	1.12	-0.87	
4,284.0	17.50	351.30	4,130.0	1,028.2	-101.2	1,032.7	2.01	1.74	
4,376.0	18.70	352.60	4,217.4	1,056.5	-105.2	1,061.3	1.38	1.30	
4,468.0	17.50	352.60	4,304.9	1,084.9	-108.8	1,089.9	1.30	-1.30	
4,560.0	18.80	350.30	4,392.3	1,113.2	-113.1	1,118.5	1.61	1.41	
4,651.0	17.50	349.70	4,478.8	1,141.1	-118.0	1,146.8	1.44	-1.43	
4,743.0	18.80	352.60	4,566.2	1,169.5	-122.4	1,175.5	1.72	1.41	
4,835.0	17.20	352.80	4,653.7	1,197.7	-126.0	1,203.9	1.74	-1.74	
4,927.0	18.10	354.10	4,741.4	1,225.4	-129.2	1,231.8	1.07	0.98	

# Cathedral Energy Services

## Survey Report

<b>Company:</b>	EnCana Oil & Gas (USA) Inc	<b>Local Co-ordinate Reference:</b>	Well 8505A-24 L24 496 (was 8504E-24)
<b>Project:</b>	Story Gulch	<b>TVD Reference:</b>	KB @ 8208.0ft (Original Well Elev)
<b>Site:</b>	L24 496	<b>MD Reference:</b>	KB @ 8208.0ft (Original Well Elev)
<b>Well:</b>	8505A-24 L24 496 (was 8504E-24)	<b>North Reference:</b>	True
<b>Wellbore:</b>	DD	<b>Survey Calculation Method:</b>	Minimum Curvature
<b>Design:</b>	FINAL	<b>Database:</b>	USA EDM 5000 Multi Users DB

Survey									
Measured Depth (ft)	Inclination (°)	Azimuth (°)	Vertical Depth (ft)	+N/-S (ft)	+E/-W (ft)	Vertical Section (ft)	Dogleg Rate (°/100ft)	Build Rate (°/100ft)	Formations / Comments
5,019.0	17.00	354.60	4,829.1	1,253.0	-132.0	1,259.5	1.21	-1.20	
5,111.0	18.40	352.80	4,916.7	1,280.8	-135.0	1,287.5	1.63	1.52	
5,203.0	17.60	352.20	5,004.2	1,309.0	-138.7	1,315.9	0.89	-0.87	
5,294.0	18.90	353.30	5,090.6	1,337.2	-142.3	1,344.4	1.48	1.43	
5,386.0	17.20	353.30	5,178.1	1,365.5	-145.7	1,372.9	1.85	-1.85	
5,478.0	17.90	353.80	5,265.8	1,393.1	-148.8	1,400.7	0.78	0.76	
5,570.0	19.50	353.30	5,353.0	1,422.4	-152.1	1,430.1	1.75	1.74	
5,662.0	17.30	352.60	5,440.2	1,451.2	-155.6	1,459.2	2.40	-2.39	
5,754.0	17.70	353.00	5,528.0	1,478.7	-159.1	1,486.8	0.45	0.43	
5,846.0	18.10	350.60	5,615.5	1,506.7	-163.1	1,515.1	0.91	0.43	
5,938.0	17.10	350.00	5,703.2	1,534.1	-167.8	1,542.9	1.10	-1.09	
6,029.0	18.40	350.80	5,789.9	1,561.4	-172.4	1,570.6	1.45	1.43	
6,121.0	17.30	349.70	5,877.5	1,589.2	-177.2	1,598.8	1.25	-1.20	
6,213.0	19.00	351.80	5,964.9	1,617.5	-181.8	1,627.4	1.98	1.85	
6,304.0	17.40	351.60	6,051.3	1,645.6	-185.9	1,655.9	1.76	-1.76	
6,396.0	18.40	351.70	6,138.9	1,673.6	-190.0	1,684.1	1.09	1.09	
6,488.0	16.60	352.00	6,226.6	1,701.0	-193.9	1,711.8	1.96	-1.96	
6,580.0	17.20	350.40	6,314.6	1,727.4	-198.0	1,738.5	0.83	0.65	
6,672.0	18.60	352.10	6,402.2	1,755.4	-202.3	1,766.8	1.62	1.52	
6,764.0	16.60	351.40	6,489.9	1,782.9	-206.3	1,794.6	2.19	-2.17	
6,855.0	18.30	348.70	6,576.7	1,809.8	-211.0	1,821.9	2.07	1.87	
6,947.0	17.70	351.80	6,664.2	1,837.8	-215.9	1,850.3	1.23	-0.65	
7,039.0	15.60	348.20	6,752.3	1,863.7	-220.4	1,876.6	2.54	-2.28	
7,131.0	16.00	350.10	6,840.8	1,888.3	-225.1	1,901.6	0.71	0.43	
7,223.0	16.90	348.70	6,929.1	1,913.9	-229.9	1,927.6	1.07	0.98	
7,315.0	18.30	350.70	7,016.8	1,941.3	-234.9	1,955.4	1.66	1.52	
7,407.0	17.80	350.50	7,104.2	1,969.4	-239.5	1,983.9	0.55	-0.54	
7,499.0	17.60	354.70	7,191.9	1,997.1	-243.1	2,011.8	1.40	-0.22	
7,590.0	16.90	353.70	7,278.8	2,024.0	-245.8	2,038.8	0.84	-0.77	
7,682.0	16.40	352.50	7,366.9	2,050.1	-249.0	2,065.1	0.66	-0.54	
7,774.0	15.80	352.20	7,455.3	2,075.4	-252.4	2,090.7	0.66	-0.65	
7,866.0	15.20	352.10	7,544.0	2,099.8	-255.8	2,115.2	0.65	-0.65	
7,958.0	14.30	350.40	7,633.0	2,122.9	-259.3	2,138.7	1.09	-0.98	
8,050.0	13.80	349.30	7,722.2	2,144.9	-263.2	2,161.0	0.62	-0.54	
8,142.0	11.30	354.10	7,812.0	2,164.7	-266.2	2,180.9	2.94	-2.72	
8,234.0	9.30	356.90	7,902.5	2,181.1	-267.5	2,197.4	2.24	-2.17	
8,325.0	7.70	358.40	7,992.5	2,194.5	-268.1	2,210.8	1.77	-1.76	
8,417.0	5.70	357.30	8,083.9	2,205.2	-268.5	2,221.4	2.18	-2.17	
8,509.0	3.60	355.70	8,175.6	2,212.7	-268.9	2,228.9	2.29	-2.28	
8,601.0	1.20	354.40	8,267.5	2,216.5	-269.2	2,232.7	2.61	-2.61	
8,693.0	0.90	324.90	8,359.5	2,218.1	-269.7	2,234.3	0.66	-0.33	
8,785.0	0.80	290.00	8,451.5	2,218.9	-270.8	2,235.3	0.56	-0.11	
8,876.0	1.00	267.70	8,542.4	2,219.1	-272.1	2,235.6	0.44	0.22	
8,968.0	1.40	347.30	8,634.4	2,220.1	-273.2	2,236.8	1.70	0.43	
9,060.0	1.50	20.50	8,726.4	2,222.3	-273.0	2,239.0	0.91	0.11	
9,152.0	1.40	19.00	8,818.4	2,224.5	-272.2	2,241.1	0.12	-0.11	
9,244.0	1.20	17.90	8,910.4	2,226.5	-271.6	2,242.9	0.22	-0.22	
9,335.0	0.90	40.10	9,001.3	2,228.0	-270.8	2,244.3	0.55	-0.33	
9,427.0	0.50	5.30	9,093.3	2,228.9	-270.3	2,245.2	0.62	-0.43	
9,519.0	0.10	197.30	9,185.3	2,229.2	-270.3	2,245.5	0.65	-0.43	
9,611.0	0.30	216.70	9,277.3	2,229.0	-270.5	2,245.2	0.23	0.22	
9,703.0	0.90	202.20	9,369.3	2,228.1	-270.9	2,244.4	0.67	0.65	
9,795.0	1.20	200.30	9,461.3	2,226.5	-271.5	2,243.0	0.33	0.33	

# Cathedral Energy Services

## Survey Report

<b>Company:</b>	EnCana Oil & Gas (USA) Inc	<b>Local Co-ordinate Reference:</b>	Well 8505A-24 L24 496 (was 8504E-24)
<b>Project:</b>	Story Gulch	<b>TVD Reference:</b>	KB @ 8208.0ft (Original Well Elev)
<b>Site:</b>	L24 496	<b>MD Reference:</b>	KB @ 8208.0ft (Original Well Elev)
<b>Well:</b>	8505A-24 L24 496 (was 8504E-24)	<b>North Reference:</b>	True
<b>Wellbore:</b>	DD	<b>Survey Calculation Method:</b>	Minimum Curvature
<b>Design:</b>	FINAL	<b>Database:</b>	USA EDM 5000 Multi Users DB

Survey									
Measured Depth (ft)	Inclination (°)	Azimuth (°)	Vertical Depth (ft)	+N/-S (ft)	+E/-W (ft)	Vertical Section (ft)	Dogleg Rate (°/100ft)	Build Rate (°/100ft)	Formations / Comments
9,886.0	0.70	251.20	9,552.3	2,225.5	-272.4	2,242.0	1.03	-0.55	
9,978.0	1.00	231.80	9,644.3	2,224.8	-273.5	2,241.5	0.45	0.33	
10,084.0	1.10	236.60	9,750.3	2,223.7	-275.1	2,240.6	0.13	0.09	
10,176.0	0.50	306.20	9,842.3	2,223.4	-276.2	2,240.5	1.13	-0.65	
10,268.0	0.60	24.70	9,934.3	2,224.1	-276.3	2,241.1	0.76	0.11	
10,360.0	1.40	57.20	10,026.2	2,225.1	-275.1	2,242.0	1.03	0.87	
10,452.0	0.90	67.90	10,118.2	2,226.0	-273.5	2,242.7	0.59	-0.54	
10,544.0	0.70	71.40	10,210.2	2,226.5	-272.3	2,243.0	0.22	-0.22	
10,636.0	0.40	75.40	10,302.2	2,226.7	-271.5	2,243.1	0.33	-0.33	
10,727.0	0.20	234.30	10,393.2	2,226.7	-271.3	2,243.1	0.65	-0.22	
10,819.0	0.60	256.90	10,485.2	2,226.5	-271.9	2,243.0	0.46	0.43	
10,911.0	0.90	226.80	10,577.2	2,225.9	-272.9	2,242.5	0.53	0.33	
11,003.0	0.70	320.90	10,669.2	2,225.8	-273.8	2,242.6	1.28	-0.22	
11,095.0	0.50	300.30	10,761.2	2,226.5	-274.5	2,243.3	0.32	-0.22	
11,187.0	0.80	293.40	10,853.2	2,226.9	-275.4	2,243.9	0.34	0.33	
11,279.0	0.50	16.70	10,945.2	2,227.6	-275.9	2,244.6	0.97	-0.33	
11,370.0	1.00	277.30	11,036.2	2,228.1	-276.6	2,245.1	1.31	0.55	
11,462.0	1.80	253.10	11,128.1	2,227.7	-278.7	2,245.1	1.06	0.87	
11,554.0	1.40	269.10	11,220.1	2,227.3	-281.2	2,245.0	0.65	-0.43	
11,646.0	0.70	265.00	11,312.1	2,227.2	-282.9	2,245.1	0.76	-0.76	
11,738.0	0.30	47.60	11,404.1	2,227.4	-283.3	2,245.3	1.04	-0.43	
11,829.0	0.10	262.90	11,495.1	2,227.5	-283.2	2,245.4	0.42	-0.22	
11,921.0	0.70	266.50	11,587.1	2,227.5	-283.8	2,245.5	0.65	0.65	
12,013.0	1.80	246.50	11,679.1	2,226.8	-285.7	2,245.1	1.27	1.20	
12,105.0	2.50	239.40	11,771.0	2,225.3	-288.8	2,243.9	0.81	0.76	
12,197.0	2.20	233.60	11,862.9	2,223.2	-291.9	2,242.3	0.42	-0.33	
12,288.0	1.90	233.10	11,953.9	2,221.2	-294.5	2,240.7	0.33	-0.33	
12,380.0	1.80	236.80	12,045.8	2,219.5	-297.0	2,239.3	0.17	-0.11	
12,472.0	1.60	239.50	12,137.8	2,218.1	-299.3	2,238.2	0.23	-0.22	
12,564.0	1.70	240.70	12,229.7	2,216.8	-301.6	2,237.1	0.11	0.11	
12,656.0	2.20	239.90	12,321.7	2,215.2	-304.3	2,236.0	0.54	0.54	
12,774.0	2.30	241.50	12,439.6	2,212.9	-308.3	2,234.2	0.10	0.08	Last Cathedral Survey @ 12,774' MD
12,834.0	2.30	241.50	12,499.5	2,211.8	-310.5	2,233.4	0.00	0.00	Projection to Bit @ 12,834'

# Cathedral Energy Services

## Survey Report

<b>Company:</b>	EnCana Oil & Gas (USA) Inc	<b>Local Co-ordinate Reference:</b>	Well 8505A-24 L24 496 (was 8504E-24)
<b>Project:</b>	Story Gulch	<b>TVD Reference:</b>	KB @ 8208.0ft (Original Well Elev)
<b>Site:</b>	L24 496	<b>MD Reference:</b>	KB @ 8208.0ft (Original Well Elev)
<b>Well:</b>	8505A-24 L24 496 (was 8504E-24)	<b>North Reference:</b>	True
<b>Wellbore:</b>	DD	<b>Survey Calculation Method:</b>	Minimum Curvature
<b>Design:</b>	FINAL	<b>Database:</b>	USA EDM 5000 Multi Users DB

Targets									
Target Name									
- hit/miss target	Dip Angle	Dip Dir.	TVD	+N/-S	+E/-W	Northing	Easting	Latitude	Longitude
- Shape	(°)	(°)	(ft)	(ft)	(ft)	(ft)	(ft)		
8505A-24 L24 496 PBHI	0.00	0.00	13,155.0	2,216.0	-287.7	1,687,354.93	2,261,642.97	39° 41' 28.70 N	108° 7' 26.72 W
- actual wellpath misses target center by 655.9ft at 12834.0ft MD (12499.5 TVD, 2211.8 N, -310.5 E)									
- Rectangle (sides W30.0 H50.0 D0.0)									
8505A-24 L24 496 TGT	0.00	0.00	8,316.0	2,225.9	-270.7	1,687,364.38	2,261,660.22	39° 41' 28.80 N	108° 7' 26.50 W
- actual wellpath misses target center by 8.6ft at 8649.7ft MD (8316.2 TVD, 2217.4 N, -269.4 E)									
- Point									

Design Annotations				
Measured Depth	Vertical Depth	Local Coordinates		Comment
(ft)	(ft)	+N/-S (ft)	+E/-W (ft)	
3,269.0	3,160.6	732.0	-56.7	Last Cathedral Survey @ 3269' MD
12,774.0	12,439.6	2,212.9	-308.3	Last Cathedral Survey @ 12,774' MD
12,834.0	12,499.5	2,211.8	-310.5	Projection to Bit @ 12,834'

Checked By: \_\_\_\_\_ Approved By: \_\_\_\_\_ Date: \_\_\_\_\_